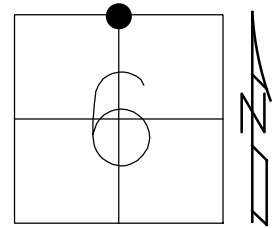


O.D.O.T. DISTRICT 2 SURVEY OFFICE (USE ONLY)

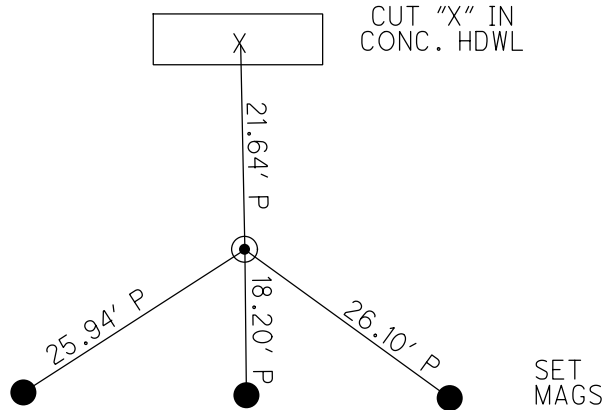
PERSONNEL _____ REFERENCE NO. 2 SHEET 2 OF 23
 NOTES RYALL DATE 5/8/03 ROUTE SR 163
 H.C. CANTERBURY WEATHER CLOUDY COUNTY OTTAWA
 R.C. BARNHISEL TEMP. 58° TOWNSHIP CLAY
 DWG BY RHOADES PID 102951 SECTION 8
 T 6 N R 13 E

TYPE MONUMENT CMON W/1" IPIN
~~ON SURFACE~~ - BELOW 6"
 OFFSET \odot PAVEMENT 35.7' LT : ~~RT~~
23.5' LT TO LT EDGE PAVEMENT
 STATION: 20+72.35



HORIZ. DATUM: NAD83 2011 GEOID: NAVD88 2018
 GRID: NORTHING: 674685.446 EASTING: 1720102.773

RECORD:
 CMON SET
 2003
 FD CMON
 REFOTT2
 12/14/12, RJL
 FD 1" IPIN
 6" DOWN
 REF2
 5/23/16, JFO
 7/15/22, TDN

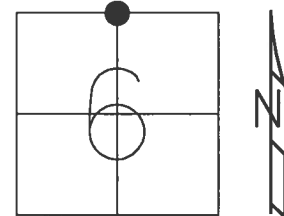


\odot SR 163

O.D.O.T. DISTRICT 2 SURVEY OFFICE (USE ONLY)

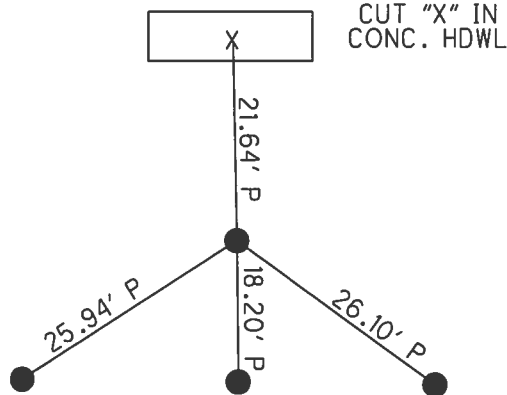
PERSONNEL _____ REFERENCE NO. 2 SHEET 2 OF 23
 NOTES RYALL DATE 5/8/03 ROUTE SR 163
 H.C. CANTERBURY WEATHER CLOUDY COUNTY OTTAWA
 R.C. BARNHEISEL TEMP. 58° TOWNSHIP CLAY
 SECTION 6
 T 6 N R 13 E

TYPE MONUMENT CMON W/ 1" IPIN
~~ON SURFACE~~ - BELOW 10"
 LEFT - CL PAV'T - ~~RIGHT~~ 35.7'
 23.5' LT TO LT EDGE PAVEMENT
 S.L.M. 20+72.35



GRID: NORTHING: 674685.461 EASTING: 1720102.748

RECORD:
 MON. SET FROM NEW CONST. 2003
 FD CMON, GPS REFOTT2
 12/14/12, RJL
 FD 1" IPIN
 6" DOWN
 REF2
 5/23/16, JFO



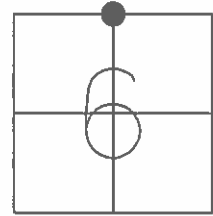
SET MAG NAILS
 3' S. OF N. EB

CL SR 163

O.D.O.T. DISTRICT 2 SURVEY OFFICE (USE ONLY)

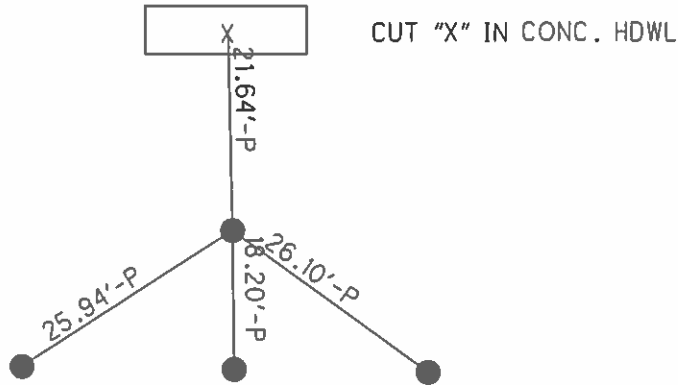
PERSONNEL _____ REFERENCE NO. 2 SHEET 2 OF 23
 NOTES RYALL DATE 05/08/03 ROUTE SR 163
 H.C. CANTERBURY WEATHER CLOUDY COUNTY OTTAWA
 R.C. BARNHISEL TEMP. 58° TOWNSHIP CLAY
 SECTION 6
 T. 6 N R. 13 E

TYPE MONUMENT CMON W/ 1" IPIN
~~ON SURFACE~~ - BELOW 10"
 LEFT - ☉ PAV'T - ~~RIGHT~~ 35.7'
23.5' LT TO LT EDGE PAVEMENT
 S.L.M. 20+69



GRID: NORTHING: 674685.419 EASTING: 1720102.688

RECORD:
 MON. SET FROM NEW CONST. 2003
 FD CMON, GPS REFOTT2
 12/14/12, RJL



SET MAG NAILS 3' S. OF
 N. EDGE OF BERM

☉ SR 163

O.D.O.T. DISTRICT 2 SURVEY OFFICE

PERSONNEL

REFERENCE NO. 2

SHEET 2 OF 6

NOTES RYALL

DATE 05/08/03

ROUTE SR 163

H.C. CANTERBURY

WEATHER CLOUDY

COUNTY OTTAWA

R.C. BARNHISEL

TEMP. +58°

TOWNSHIP CLAY

SECTION 6

T 6 N R 13 E

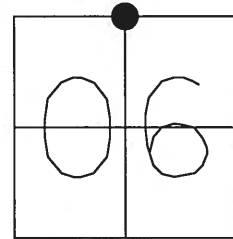
TYPE MONUMENT 1" IRON ROD IN CONC.

~~ON SURFACE~~ - BELOW 10"

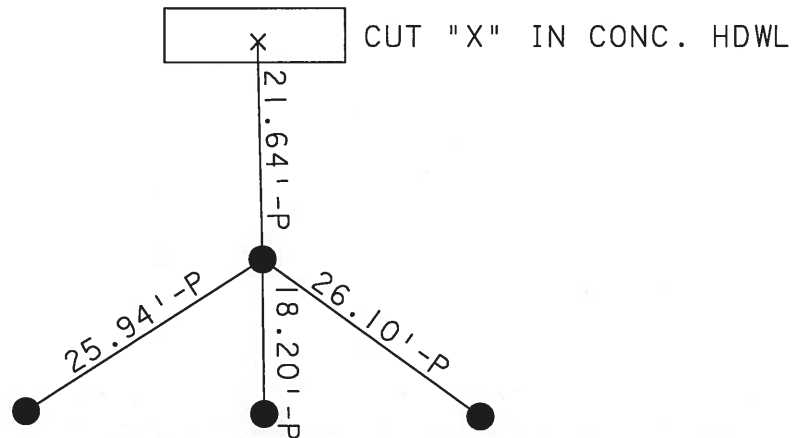
LEFT - Q PAV'T - ~~RIGHT~~ 35.7'

23.5' LT OF LT EDGE PAVEMENT

S.L.M. 20+69.00



RECORD:
MON. SET FROM NEW CONST. 2003



CUT "X" IN CONC. HDWL

SET MAG NAILS 3' S. OF
N. EDGE OF BERM

CL PAV'T SR 163

O.D.O.T. DISTRICT 2 SURVEY OFFICE

PERSONNEL

REFERENCE NO. 2

SHEET 2 OF 18

NOTES RIPPLE

H.C. Cheney

R.C. Geyman

DATE 10/28/91

WEATHER Cloudy-Windy

TEMP. 68°

ROUTE SR#163

COUNTY OTTAWA

TOWNSHIP CLAY

SECTION 31 & 6

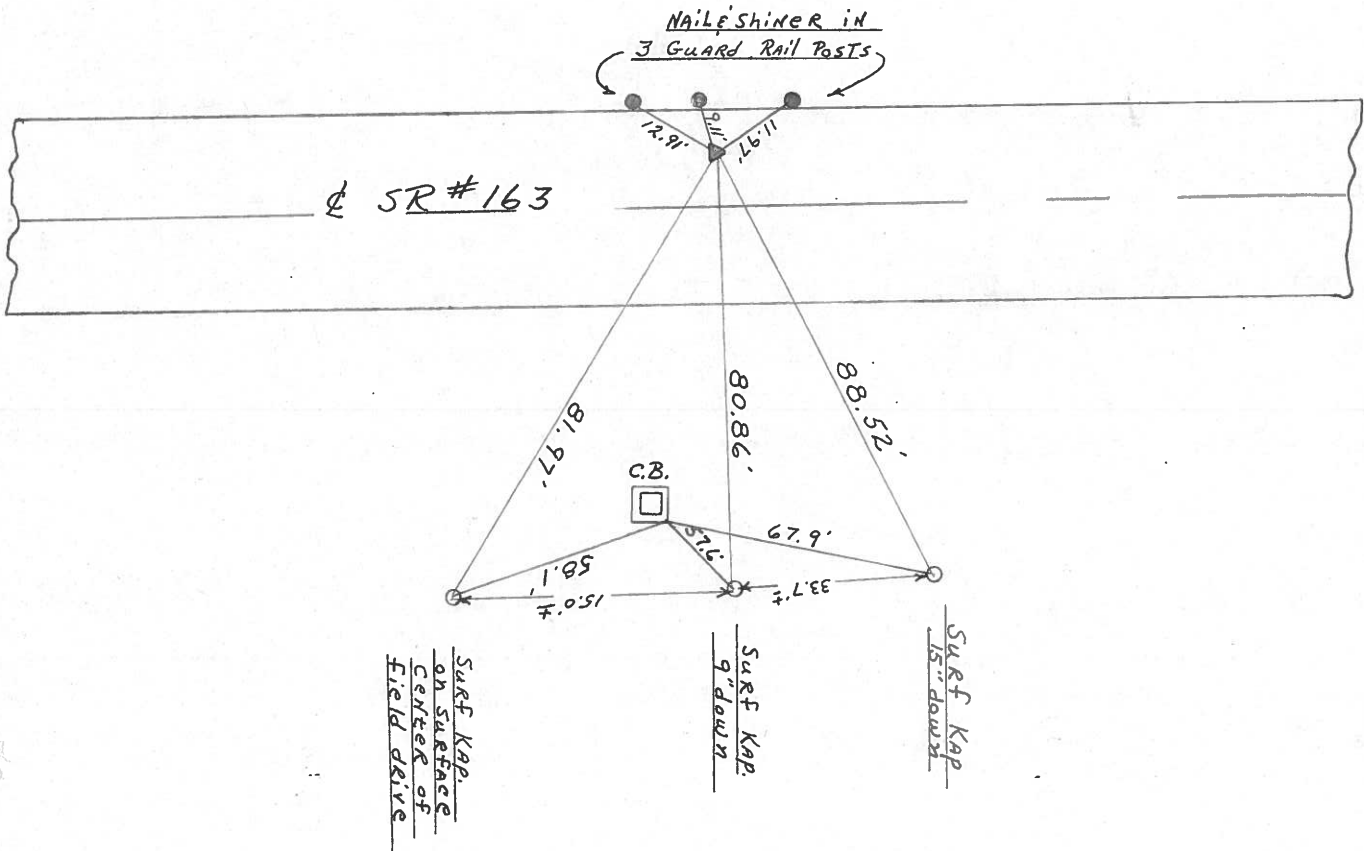
T1E6 N R 13 E

TYPE MONUMENT Set P.K. Nail Washer
 ON SURFACE - BELOW 1.5" down found Boat Spk. Washer
 LEFT-☉ PAV'T. - ~~RIGHT~~ 3.5'
6' TO LT. EDGE PAVEMENT
 S.L.M. 20+73

31	32
6	5



Record: 9.27.70
 P.S. R.R. Spk 4" down



O.D.O.T. DISTRICT 2 SURVEY OFFICE

PERSONNEL _____

REFERENCE NO. _____

SHEET 2 OF 18

NOTES RIPPLE

H.C. BARBOUR

R.C. GEYMAN

DATE _____

WEATHER _____

TEMP. _____

ROUTE SR# 163

COUNTY OTTAWA

TOWNSHIP CLAY

SECTION 31 & 6

T. 6 N R. 13 E

TYPE MONUMENT _____

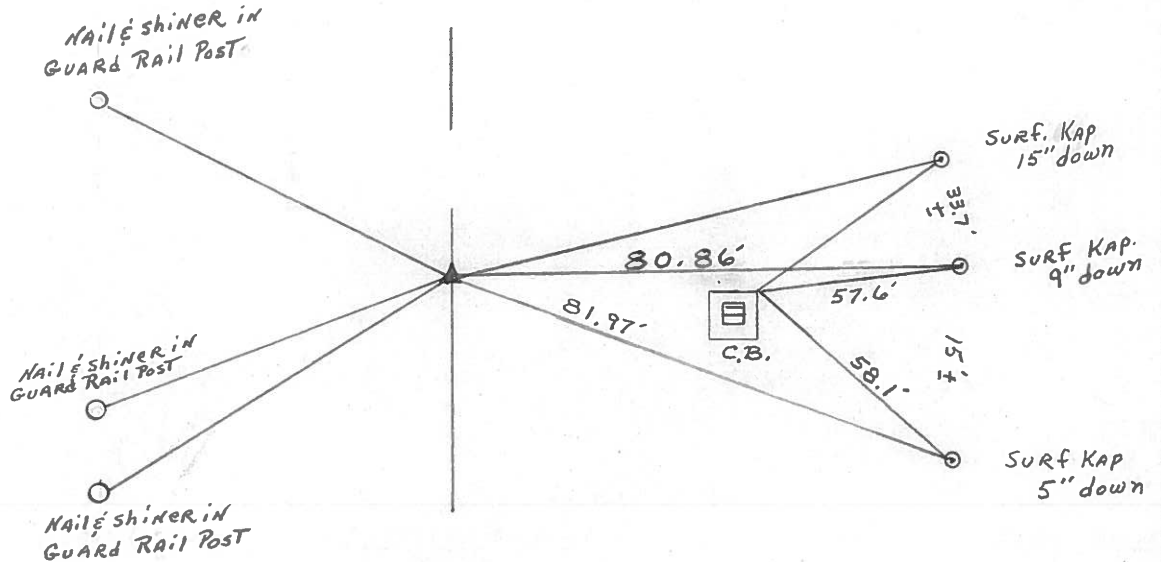
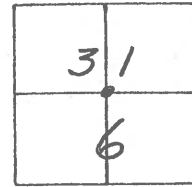
ON SURFACE - BELOW Found Boat Spk. Washer Above RR. Spk.

LEFT - & PAV'T. - RIGHT 3 1/2' LT. & 1 1/2" below surface

TO _____ EDGE PAVEMENT

S.L.M. _____

2

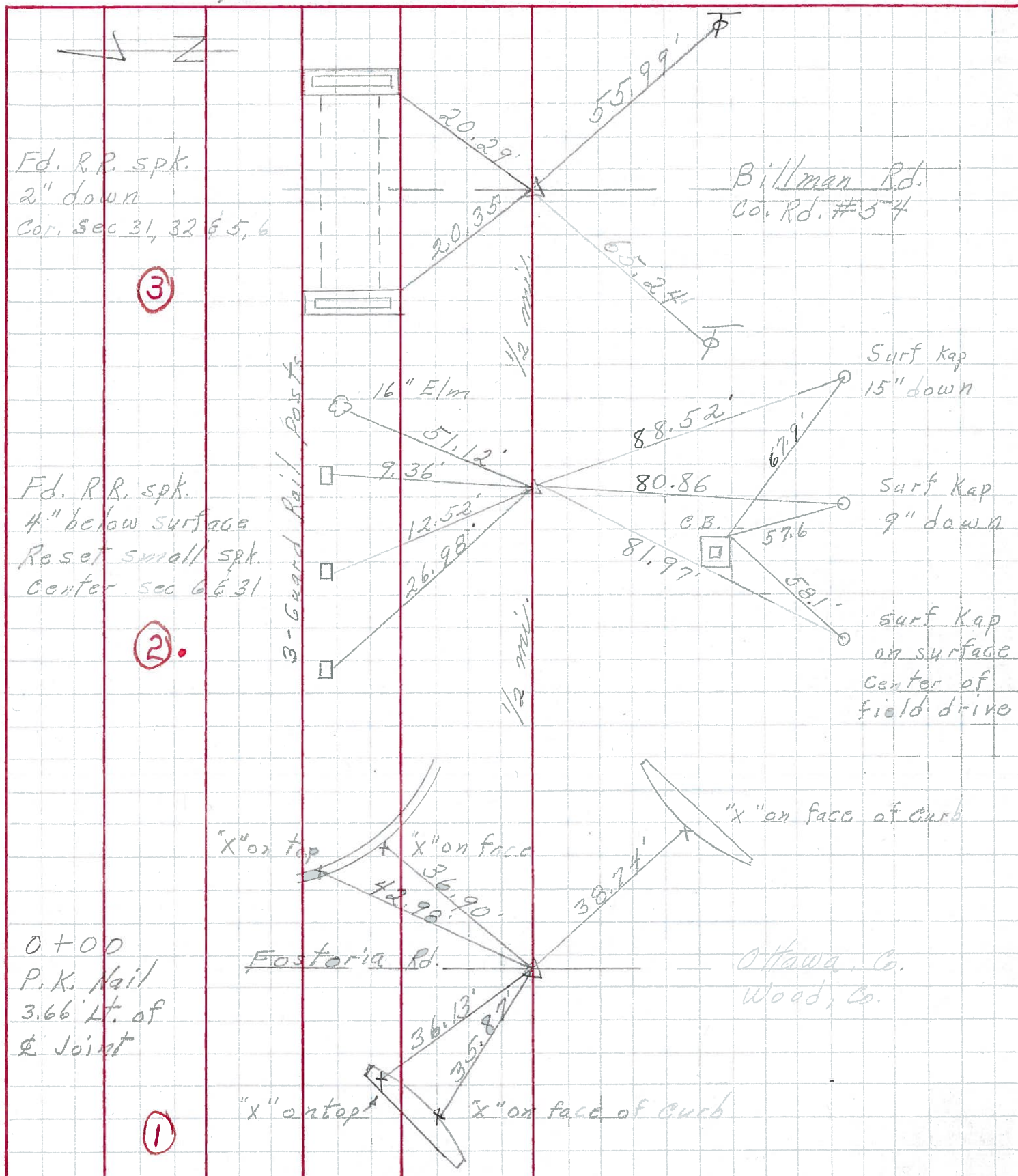


d Survey SR# 163

PERSONNEL	TITLE	PERSONNEL	TITLE
Schneider			
Mosser			
Barbour			
Geyman			

COUNTY Ottawa DATE 9-27-70
 S. R. 163 WEATHER cloudy
 SEC. 6 & 31 TEMP 50°

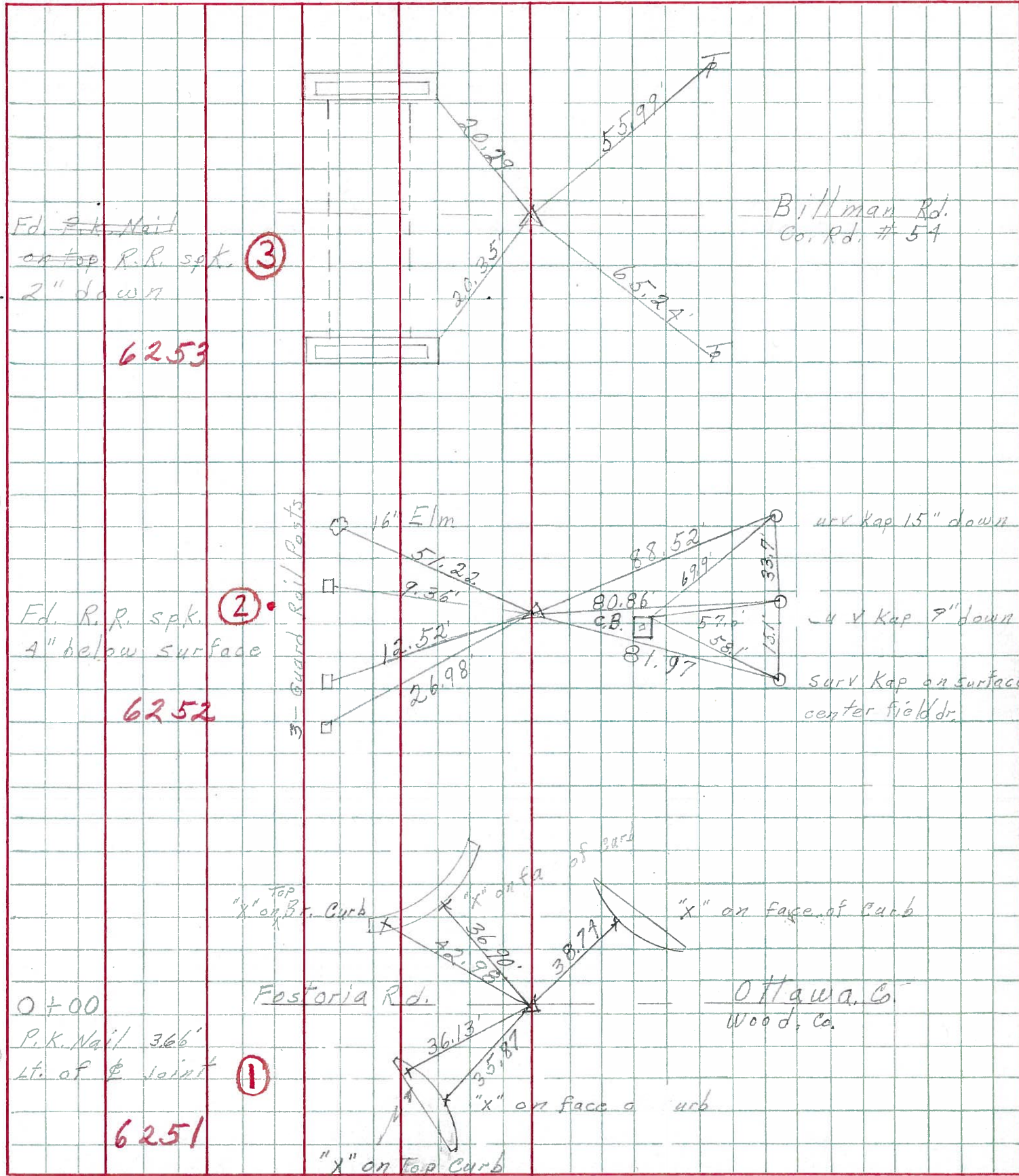
DESCRIPTION Clay Twp. JOB NO. _____



PERSONNEL TITLE PERSONNEL TITLE
 Schneider _____
 Mosser _____
 Barbour _____
 Potts _____

COUNTY Ottawa DATE 5-17-68
 S. R. 163 WEATHER cloudy
 SEC. Wood Co. Line-East TEMP. 50°

DESCRIPTION Ties for Control Point JOB NO. _____
 LEFT CENTER LINE RIGHT



6253

6252

6251