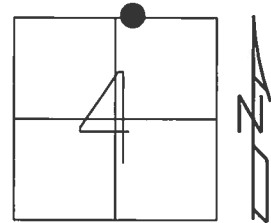


O.D.O.T. DISTRICT 2 SURVEY OFFICE (USE ONLY)

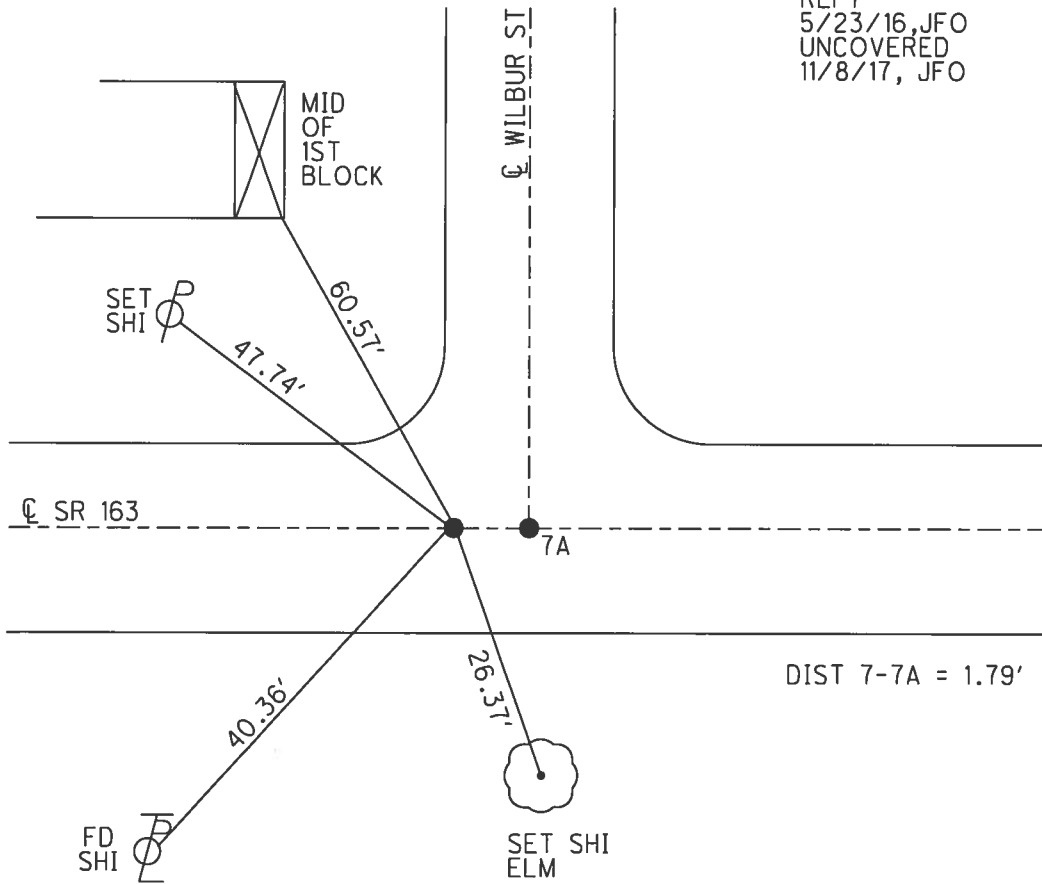
PERSONNEL _____ REFERENCE NO. 7 SHEET 7 OF 23
 NOTES CARSON _____ DATE 5/22/17 _____ ROUTE SR 163
 H.C. O'DONNELL _____ WEATHER FAIR _____ COUNTY OTTAWA
 R.C. POORE _____ TEMP. 55° _____ TOWNSHIP CLAY
 RHOADES _____ SECTION 4
 T 6 N R 13 E

TYPE MONUMENT CMON
 ON SURFACE - ~~BELOW~~ ON _____
 LEFT - ℄ PAV'T - RIGHT ON _____
14' TO RT FACE OF CURB
 S.L.M. 129+91.97



GRID: NORTHING: 674716.084 EASTING: 1731021.654

RECORD:
 SET CMON W/ 1" IPIN
 PER POGGEMEYER SURVEY
 FD CMON
 REF 7
 5/23/16, JFO
 UNCOVERED
 11/8/17, JFO



FD SHI

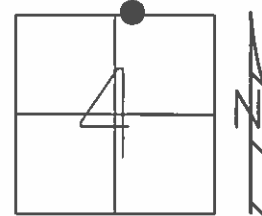
SET SHI ELM

DIST 7-7A = 1.79'

O.D.O.T. DISTRICT 2 SURVEY OFFICE (USE ONLY)

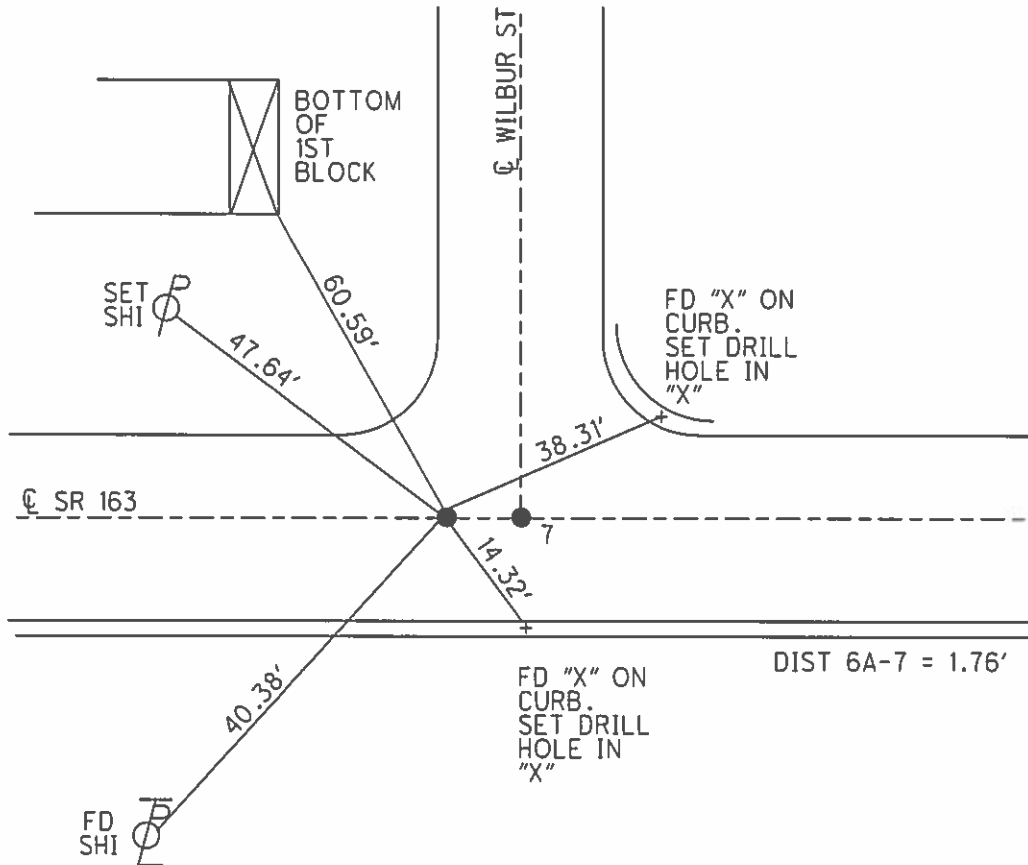
PERSONNEL _____ REFERENCE NO. 6 A SHEET 7 OF 23
 NOTES BEAUMONT DATE 5/8/03 ROUTE SR 163
 H.C. HOMAN WEATHER SUNNY COUNTY OTTAWA
 R.C. GLASS TEMP. 50° TOWNSHIP CLAY
 SECTION 4
 T 6 N R 13 E

TYPE MONUMENT P.K./WASHER
 ON SURFACE - ~~BELOW~~ ON _____
 LEFT - ℄ PAV'T - RIGHT ON _____
14' TO RT EDGE PAVEMENT
 S.L.M. 130+21



GRID: NORTHING: _____ EASTING: _____

RECORD:
 MONUMENT 1" IRON PIN
 SET IN CONC.
 AS PER POGGEMEYER SURVEY



NOTE * References checked by Duane Howell, 2003 ALSO: see plat by Poggenmeyer Design Group
 (FOR POINTS #7 - #15) @ FRONT of SECTION & ALSO R/W PLAT FOLDER

O.D.O.T. DISTRICT 2 SURVEY OFFICE

PERSONNEL REFERENCE NO. 7 SHEET 7 OF 18

NOTES Ripple
 H.C. Cheney DATE 10/29/91 ROUTE SR# 163
 R.G. Geyman WEATHER Cloudy COUNTY OTTAWA
 TOWNSHIP CLAY
 SECTION 33 & 4
T 6 N R 13 E

TYPE MONUMENT SET P.K. EWASHER
 ON SURFACE - BELOW ✓
 LEFT - PAV'T. - RIGHT ON & BOTH
14' ± TO RT. EDGE PAVEMENT Face curb
 S.L.M. 130+21

3	3
4	

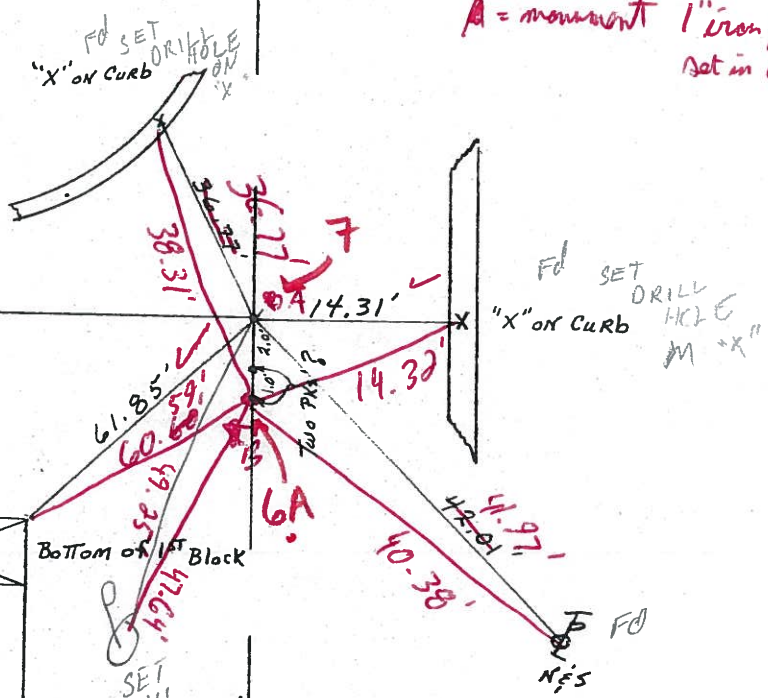
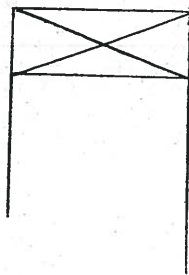


Beaimat notes 5/8/03
 Kaman HC
 Kloss RC
 50°



B
 A = monument 1" iron pin set in cone.

Wilson
 WILBER ST. 7
 NORTH



Set Mag Nail & Washer
 3-1-04
 DCH

Dist
 A to B = 1.76

Survey SR# 163
 (47th St)

O.D.O.T. DISTRICT 2 SURVEY OFFICE

PERSONNEL

REFERENCE NO. 7

SHEET 7 OF 18

NOTES Ripple

H.C. Cheney

DATE 10/29/91

ROUTE SR# 163

R.C. Geyman

WEATHER Cloudy

COUNTY OTTAWA

TEMP. 71°

TOWNSHIP CLAY

SECTION 33 & 4

T 6 N R 13 E

TYPE MONUMENT Set P.K. & Washer

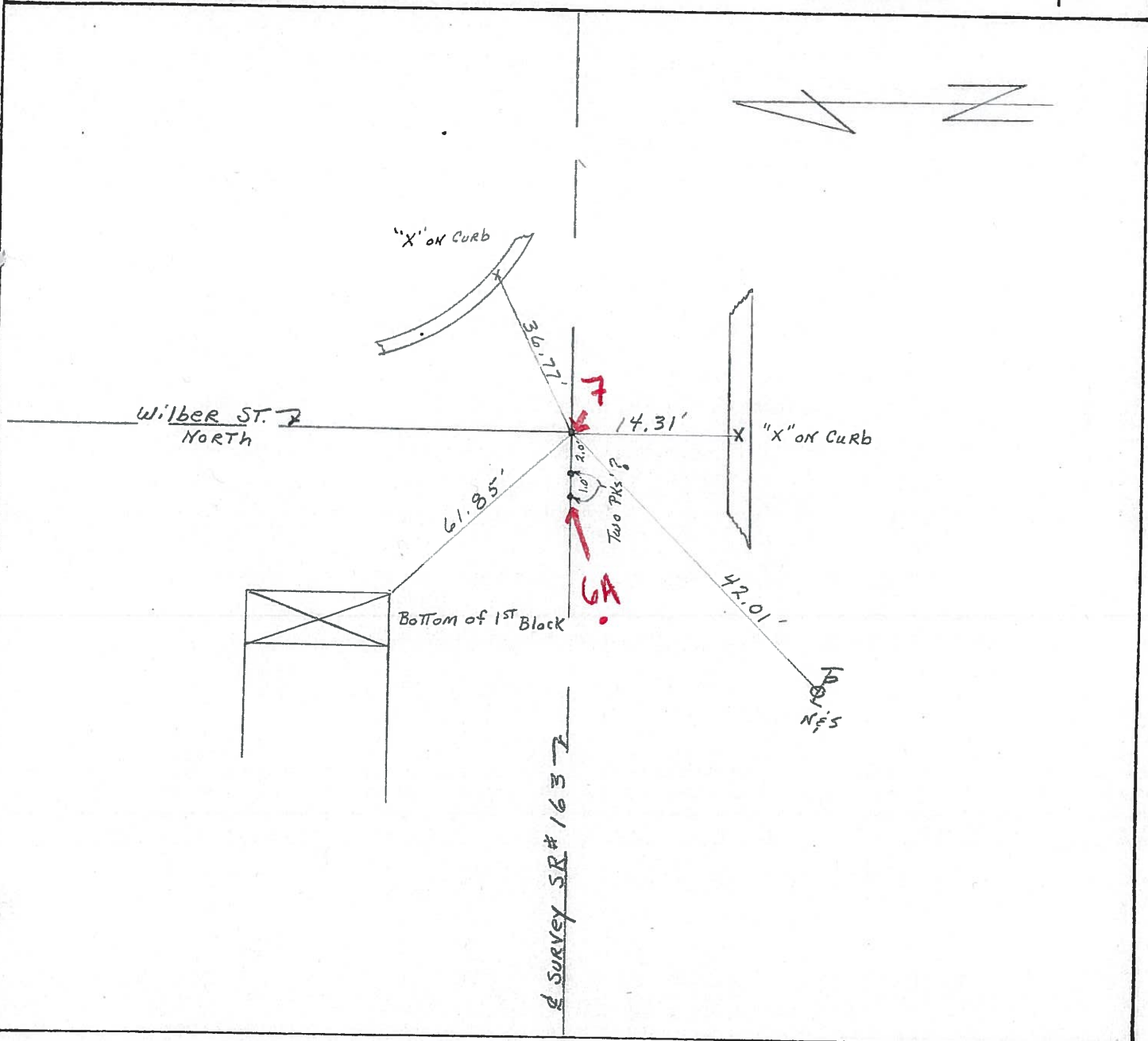
ON SURFACE - BELOW

LEFT - to Pav't. - RIGHT on &

12' TO RT. EDGE PAVEMENT

S.L.M. 130+21

3	3
4	4



SURVEY SR# 163