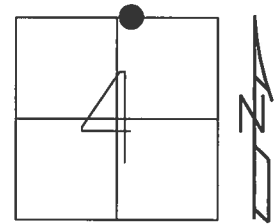


O.D.O.T. DISTRICT 2 SURVEY OFFICE (USE ONLY)

PERSONNEL _____ REFERENCE NO. 7 A SHEET 8 OF 23

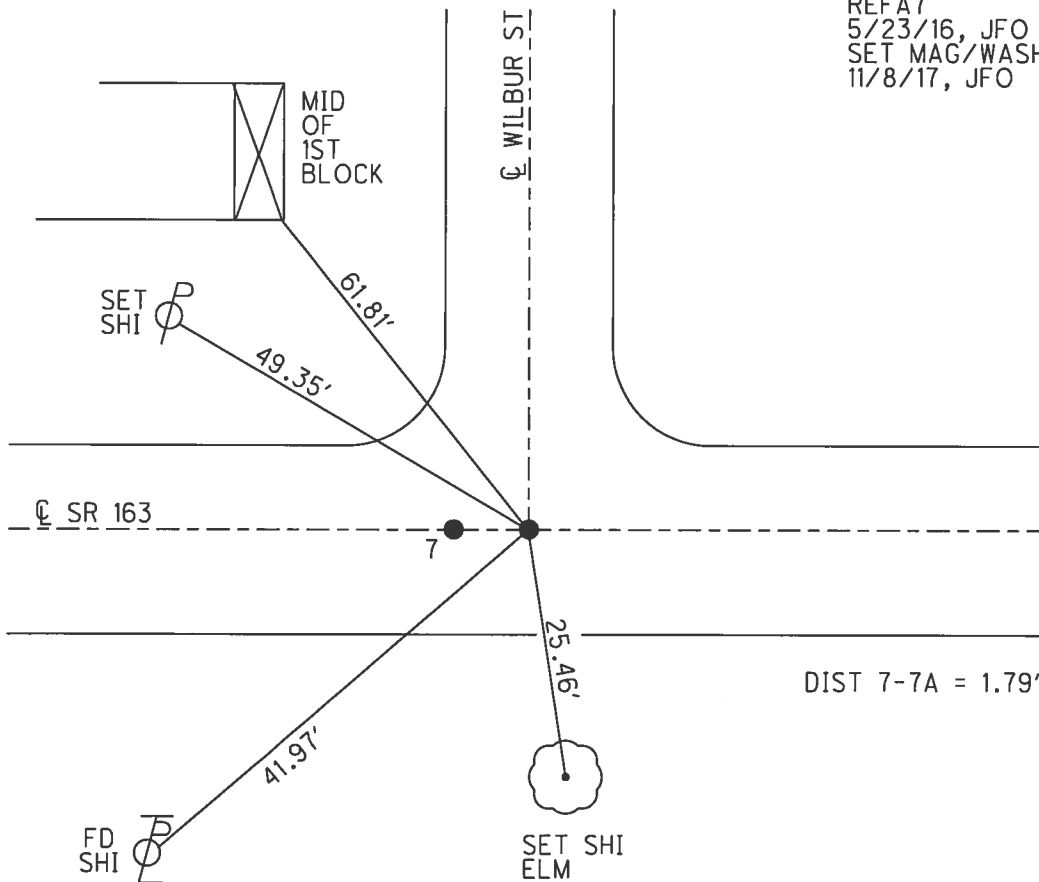
NOTES BEAUMONT DATE 5/8/03 ROUTE SR 163
 H.C. HOMAN WEATHER SUNNY COUNTY OTTAWA
 R.C. GLASS TEMP. 50° TOWNSHIP CLAY
 SECTION 4
 T 6 N R 13 E

TYPE MONUMENT MAG SHANK
 ON SURFACE - ~~BELOW~~ ON _____
 LEFT - CL PAV'T - RIGHT ON _____
14' TO RT EDGE PAVEMENT
 S.L.M. 129+93.76



GRID: NORTHING: 674716.209 EASTING: 1731023.446

RECORD:
 SET MAG/WASHER
 3/1/04, DCH
 FD MAG SHANK
 REFA7
 5/23/16, JFO
 SET MAG/WASHER
 11/8/17, JFO

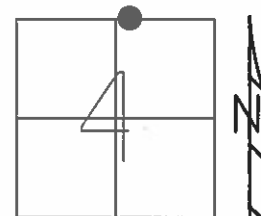


O.D.O.T. DISTRICT 2 SURVEY OFFICE (USE ONLY)

PERSONNEL _____ REFERENCE NO. 7 SHEET 8 OF 23

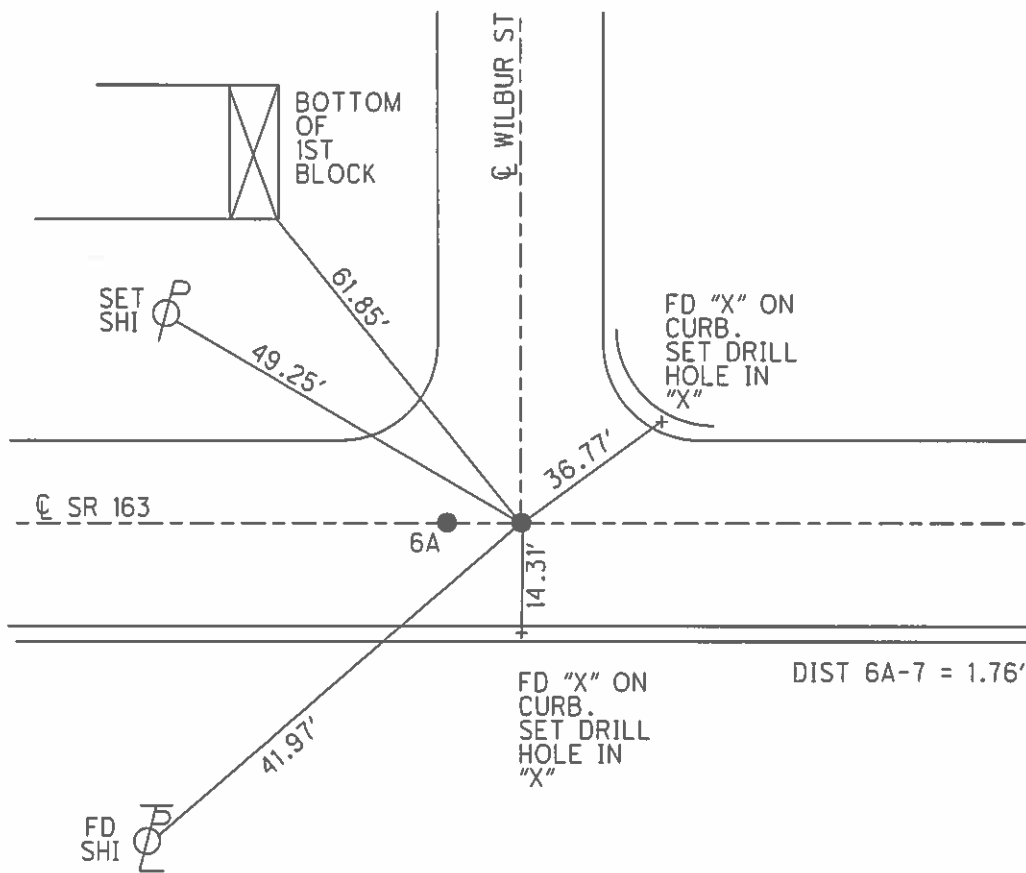
NOTES BEAUMONT DATE 5/8/03 ROUTE SR 163
 H.C. HOMAN WEATHER SUNNY COUNTY OTTAWA
 R.C. GLASS TEMP. 50° TOWNSHIP CLAY
 SECTION 4
 T 6 N R 13 E

TYPE MONUMENT _____ P.K./WASHER _____
 ON SURFACE - ~~BELOW~~ ON _____
 LEFT - \odot PAV'T - RIGHT ON _____
14' TO RT EDGE PAVEMENT
 S.L.M. 130+22.76



GRID: NORTHING: _____ EASTING: _____

RECORD:
 SET MAG/WASHER
 3-1-04, DCH



NOTE* References checked by Duane Howell, 2003 ALSO: see plat by Poggenpfer Design Group
 (FOR POINTS #7 - #15) @ FRONT of SECTION & ALSO R/W DATA FOLDER

O.D.O.T. DISTRICT 2 SURVEY OFFICE

PERSONNEL REFERENCE NO. 7 SHEET 7 OF 18

NOTES Ripple

H.C. Cheney

R.G. Geyman

DATE 10/29/91

WEATHER Cloudy

TEMP. 71°

ROUTE SR# 163

COUNTY OTTAWA

TOWNSHIP CLAY

SECTION 33 & 4

T6 N R 13 E

TYPE MONUMENT Set P.K. & Washer
 ON SURFACE - BELOW

LEFT - & PAV'T. - RIGHT ON & BOTH

14' 12" TO RT. EDGE PAVEMENT Fac curb

S.L.M. 130+21

3	3
4	

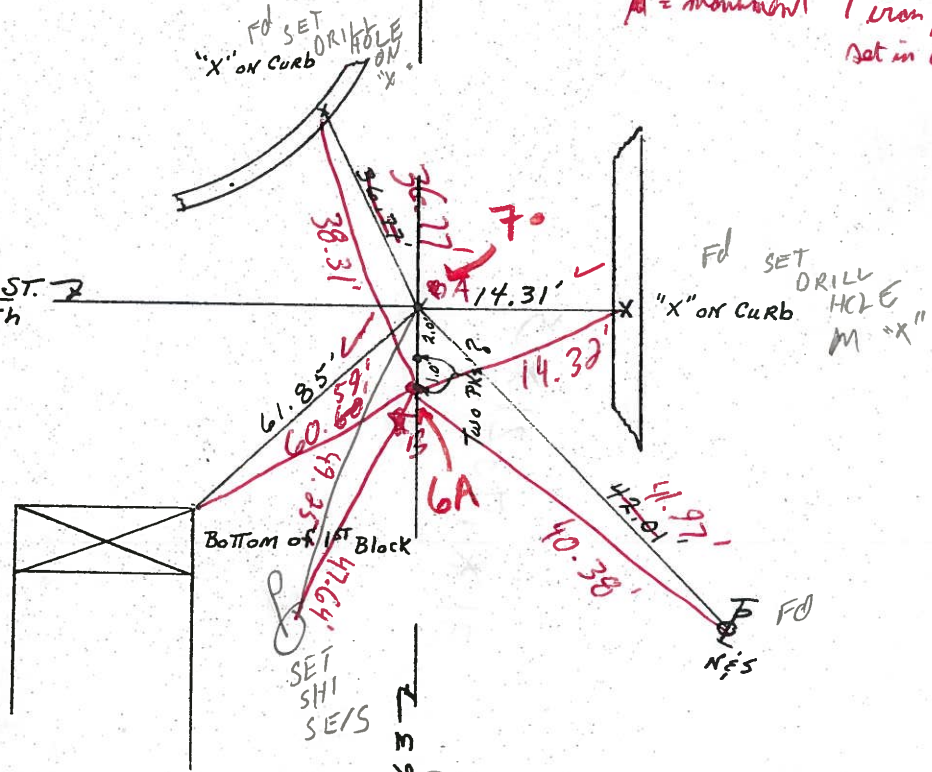


Beaimat notes 5/8/03
 Khaman AHC
 Glass RC
 50°



B
 A = monument 1" iron pin set in conc.

Wilson
 WILBER ST. 7
 NORTH



Set Mag Nail & Washer
 3-1-04
 DGH

Dist
 A to B = 1.76

Survey SR# 163
 (47th St)

O.D.O.T. DISTRICT 2 SURVEY OFFICE

PERSONNEL

REFERENCE NO. 7

SHEET 7 OF 18

NOTES Ripple

H.C. Cheney

R.C. Geyman

DATE 10/29/91

WEATHER Cloudy

TEMP. 71°

ROUTE SR# 163

COUNTY OTTAWA

TOWNSHIP CLAY

SECTION 33E4

T6 N R 13 E

TYPE MONUMENT SET P.K. & WASHER

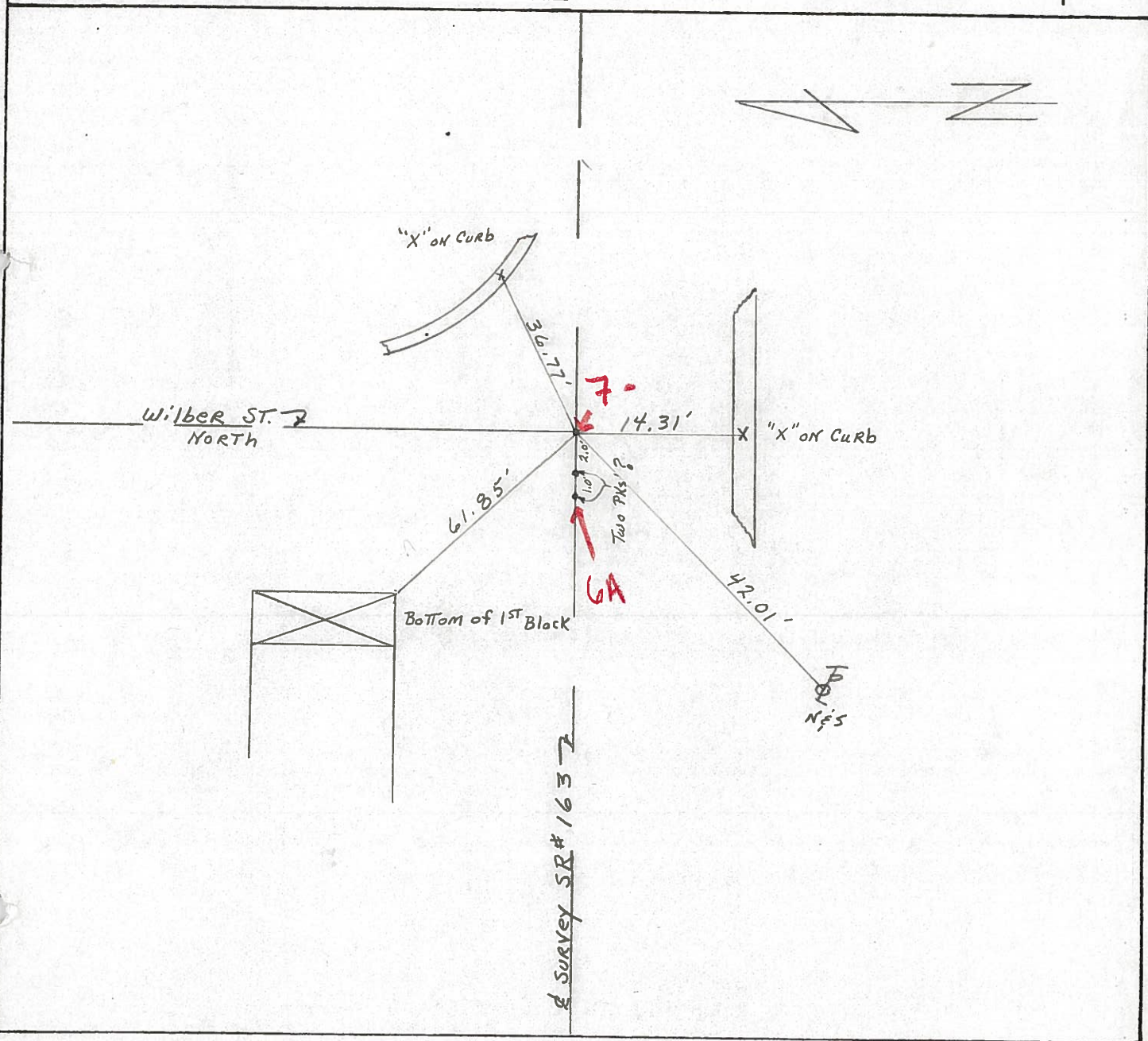
ON SURFACE - ~~BELOW~~

LEFT - ~~C~~ PAV'T. - RIGHT ON &

12' TO RT. EDGE PAVEMENT

S.L.M. 130+21

3	3
4	4



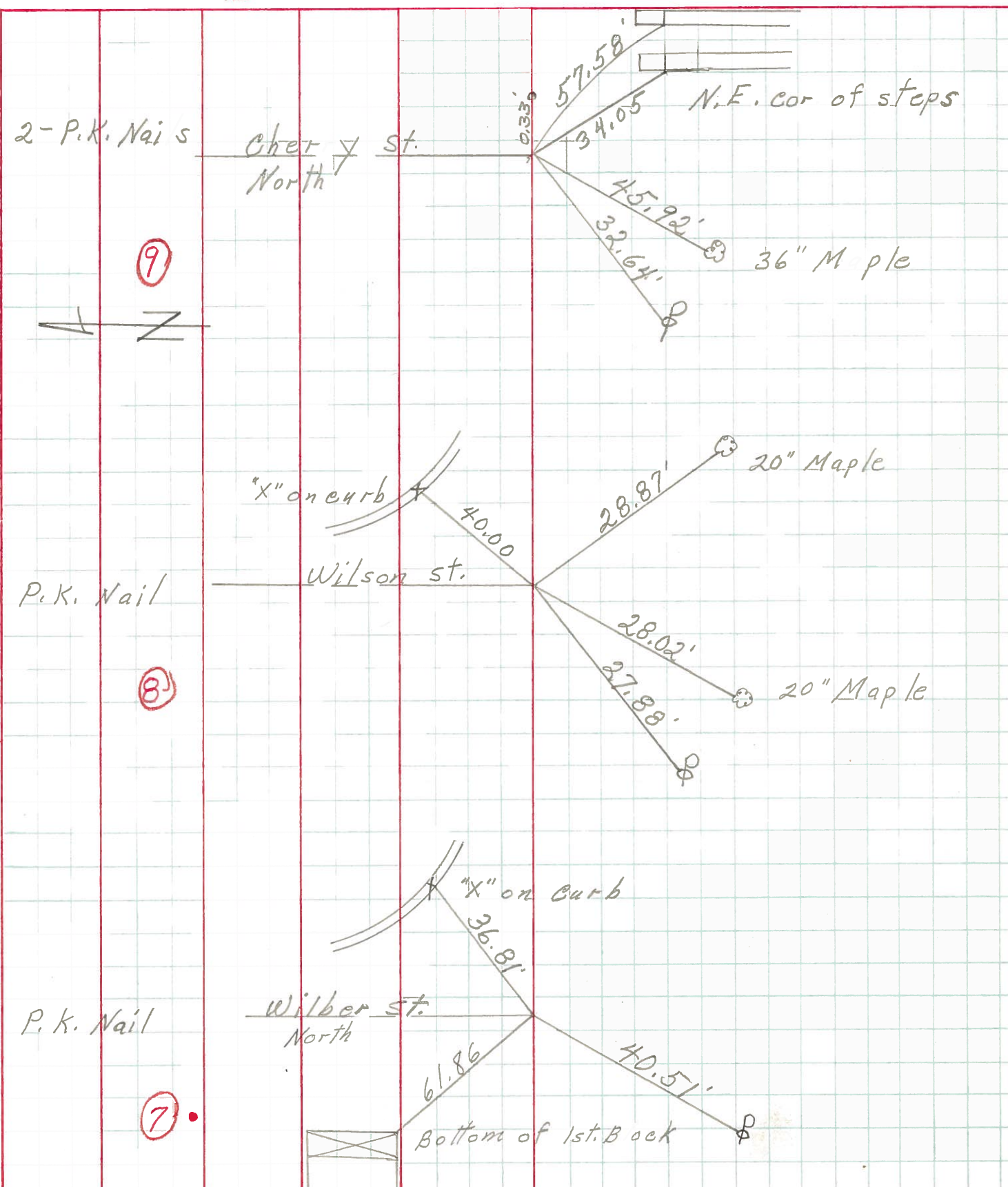
PERSONNEL TITLE PERSONNEL TITLE

COUNTY Ottawa DATE 9-27-70

S. R. 163 WEATHER

SEC. Genoa TEMP.

DESCRIPTION Clay Twp. JOB NO.



⑨

⑧

⑦

PERSONNEL	TITLE	PERSONNEL	TITLE	COUNTY	DATE
Schneider				Ottawa	3-13-70
Mosser				S. R. 163	WEATHER Fair
Potts				SEC. Genoa	TEMP. 25°

DESCRIPTION Ties for Control Points JOB NO. _____

