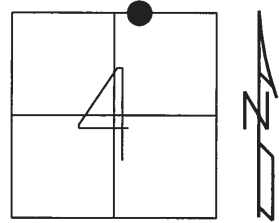


O.D.O.T. DISTRICT 2 SURVEY OFFICE (USE ONLY)

PERSONNEL \_\_\_\_\_ REFERENCE NO. 8 SHEET 9 OF 23

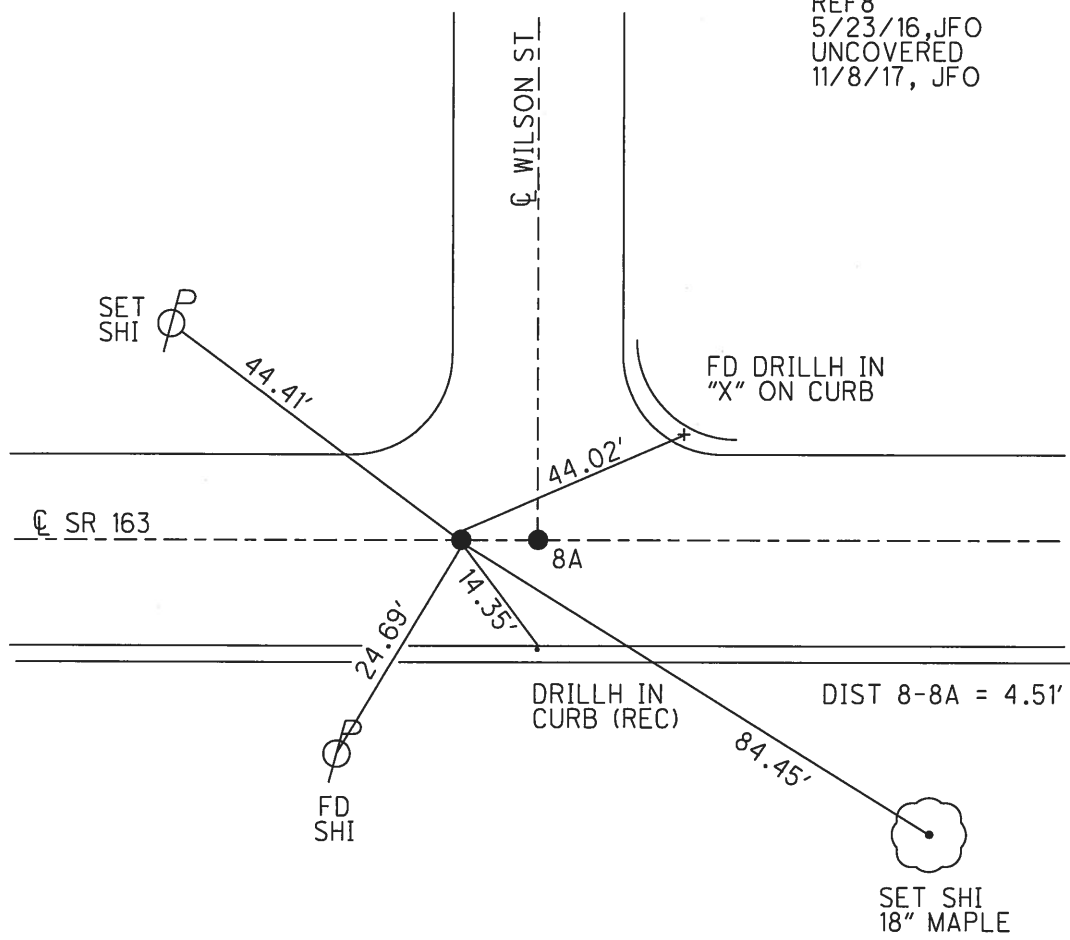
NOTES CARSON \_\_\_\_\_ DATE 5/22/17 \_\_\_\_\_ ROUTE SR 163  
 H.C. O'DONNELL \_\_\_\_\_ WEATHER FAIR \_\_\_\_\_ COUNTY OTTAWA  
 R.C. POORE \_\_\_\_\_ TEMP. 55° \_\_\_\_\_ TOWNSHIP CLAY  
 RHOADES \_\_\_\_\_ SECTION 4  
 T 6 N R 13 E

TYPE MONUMENT CMON  
 ON SURFACE - ~~BELOW~~ ON  
 LEFT - CL PAV'T - RIGHT ON  
14' TO RT EDGE PAVEMENT  
 S.L.M. 133+76.47



GRID: NORTHING: 674718.947 EASTING: 1731406.139

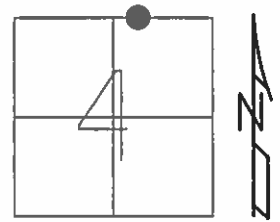
RECORD:  
 SET CMON W/ 1" IPIN  
 PER POGGEMEYER SURVEY  
 FD CMON  
 REF 8  
 5/23/16, JFO  
 UNCOVERED  
 11/8/17, JFO



O.D.O.T. DISTRICT 2 SURVEY OFFICE (USE ONLY)

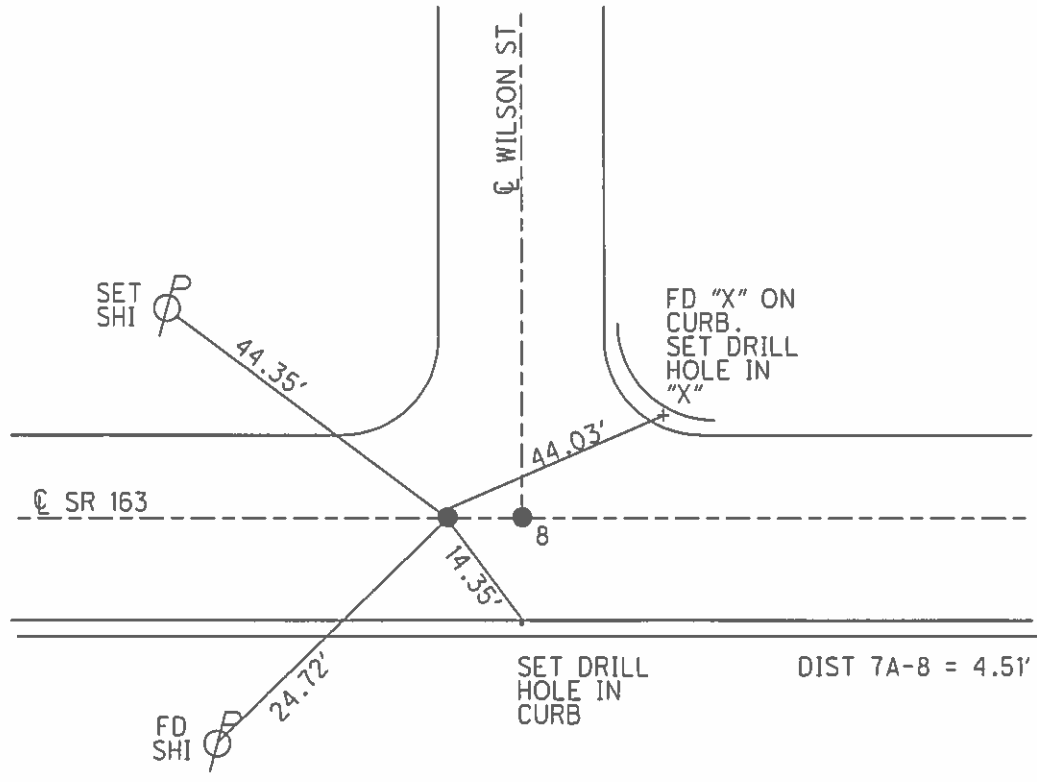
PERSONNEL \_\_\_\_\_ REFERENCE NO. 7 A SHEET 9 OF 23  
 NOTES BEAUMONT DATE 5/8/03 ROUTE SR 163  
 H.C. HOMAN WEATHER SUNNY COUNTY OTTAWA  
 R.C. GLASS TEMP. 50° TOWNSHIP CLAY  
 SECTION 4  
 T 6 N R 13 E

TYPE MONUMENT P.K./WASHER  
 ON SURFACE - ~~BELOW~~ ON \_\_\_\_\_  
 LEFT - ℄ PAV'T - RIGHT ON \_\_\_\_\_  
14' TO RT EDGE PAVEMENT  
 S.L.M. 134+10



GRID: NORTHING: \_\_\_\_\_ EASTING: \_\_\_\_\_

RECORD:  
 MONUMENT 1" IRON PIN  
 SET IN CONC.  
 AS PER POGGEMEYER SURVEY



\* See Note, Ref #7

# O.D.O.T. DISTRICT 2 SURVEY OFFICE

PERSONNEL

REFERENCE NO. 8

SHEET 8 OF 18

NOTES Ripple

H.C. Cheney

DATE 11/04/91

ROUTE SR#163

R.C. Geyman

WEATHER Cloudy

COUNTY OTTAWA

TEMP. 29°

TOWNSHIP CLAY

SECTION \_\_\_\_\_

T 6 N R 13 E

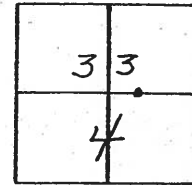
TYPE MONUMENT Set P.K. Nail & Washer

ON SURFACE - ~~BELOW~~ A 3" B=0"

LEFT - ℄ PAV'T. - RIGHT BOTH

17' ~~12'~~ TO RT. EDGE PAVEMENT FACE CURB

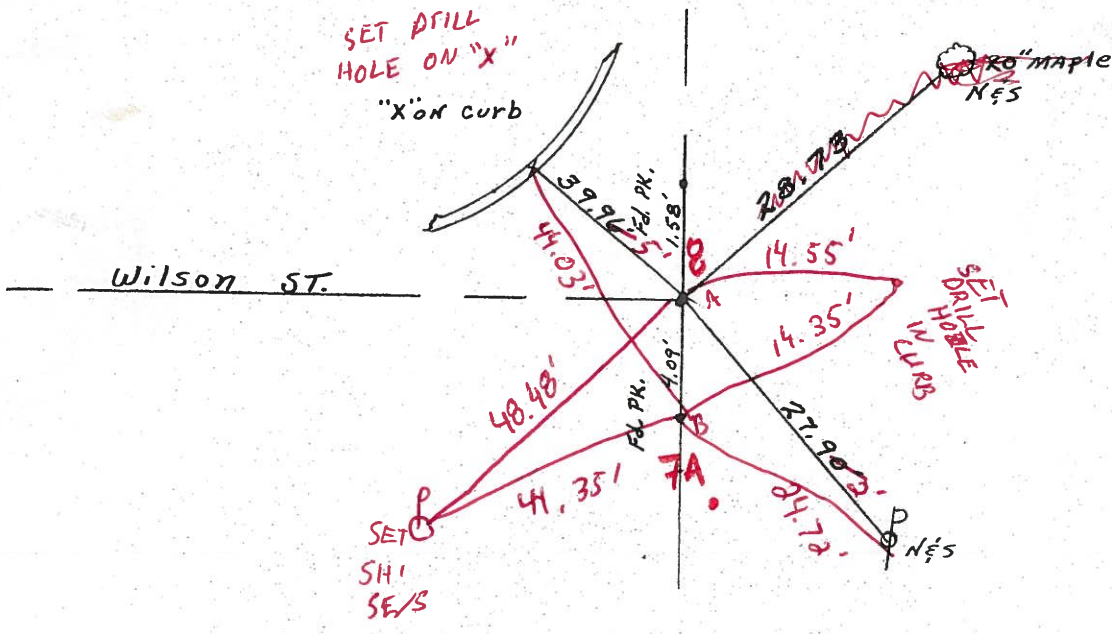
S.L.M. 134+10



Beaumont Notes 5/8/03  
50°  
 Roman HC  
 Ellis RC



Set Mag Nail & Washer  
3-1-04



Dist A to B = 45'  
~~41.5'~~

Survey S.R.# 1637

# O.D.O.T. DISTRICT 2 SURVEY OFFICE

PERSONNEL

REFERENCE NO. 8

SHEET 8 OF 18

NOTES Ripple

H.C. Cheney

R.C. Geyman

DATE 11/04/91

WEATHER Cloudy

TEMP. 29°

ROUTE SR#163

COUNTY OTTAWA

TOWNSHIP CLAY

SECTION \_\_\_\_\_

T 6 N R 13 E

TYPE MONUMENT Set P.K. Nail & Washer

ON SURFACE - ~~BELOW~~ PK

LEFT - ☉ PAV'T. - RIGHT \_\_\_\_\_

12' TO RT. EDGE PAVEMENT

S.L.M. 134+10

