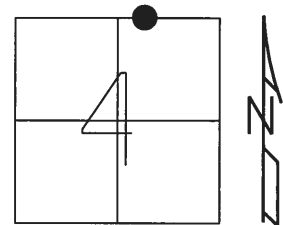


O.D.O.T. DISTRICT 2 SURVEY OFFICE (USE ONLY)

PERSONNEL _____ REFERENCE NO. 8 A SHEET 10 OF 23

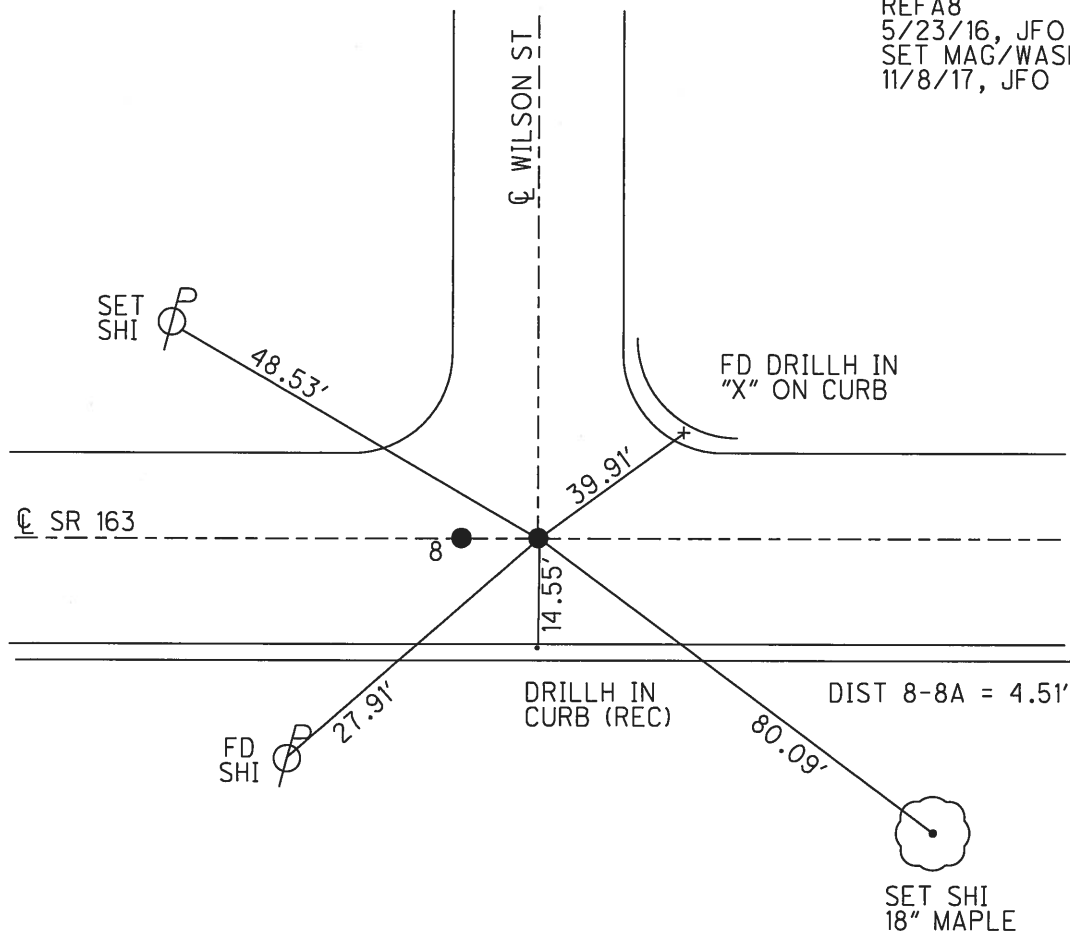
NOTES CARSON _____ DATE 5/22/17 _____ ROUTE SR 163
 H.C. O'DONNELL _____ WEATHER FAIR _____ COUNTY OTTAWA
 R.C. POORE _____ TEMP. 55° _____ TOWNSHIP CLAY
 _____ RHOADES _____ SECTION 4
 _____ T 6 N R 13 E

TYPE MONUMENT _____ MAG/WASHER _____
 ON SURFACE - ~~BELOW~~ ON _____
 LEFT - CL PAV'T - RIGHT ON _____
14' TO RT EDGE PAVEMENT _____
 S.L.M. 133+80.98 _____



GRID: NORTHING: 674719.024 EASTING: 1731410.682

RECORD:
 SET MAG/WASHER
 3/1/04, DCH
 FD MAG/WASHER
 REFAB
 5/23/16, JFO
 SET MAG/WASHER
 11/8/17, JFO

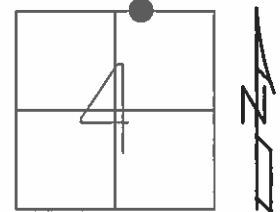


O.D.O.T. DISTRICT 2 SURVEY OFFICE (USE ONLY)

PERSONNEL _____ REFERENCE NO. 8 SHEET 10 OF 23

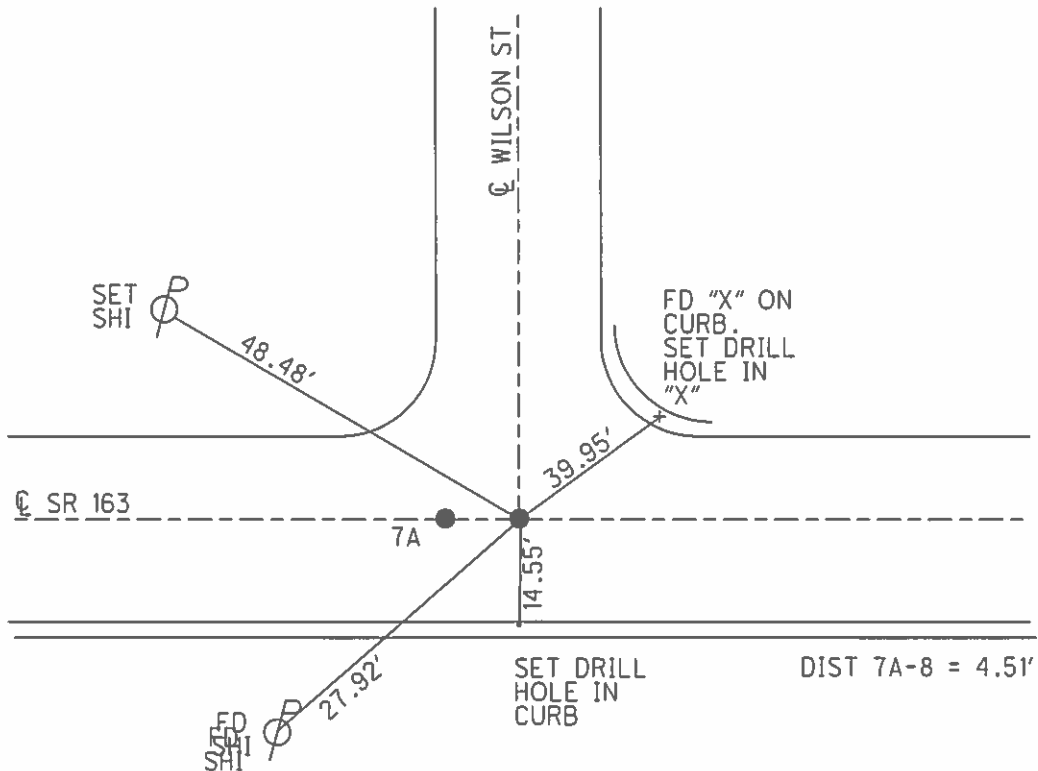
NOTES BEAUMONT DATE 5/8/03 ROUTE SR 163
 H.C. HOMAN WEATHER SUNNY COUNTY OTTAWA
 R.C. GLASS TEMP. 50° TOWNSHIP CLAY
 _____ SECTION 4
 _____ T 6 N R 13 E

TYPE MONUMENT P.K./WASHER
~~ON SURFACE~~ - BELOW 3"
 LEFT - ☉ PAV'T - RIGHT ON
14' TO RT EDGE PAVEMENT
 S.L.M. 134+14.51



GRID: NORTHING: _____ EASTING: _____

RECORD:
 SET MAG/WASHER
 3-1-04, DCH



* See Note, Ref #7 *

O.D.O.T. DISTRICT 2 SURVEY OFFICE

PERSONNEL

REFERENCE NO. 8

SHEET 8 OF 18

NOTES Ripple

H.C. Cheney

DATE 11/04/91

ROUTE SR#163

R.G. Geyman

WEATHER Cloudy

COUNTY OTTAWA

TEMP. 29°

TOWNSHIP CLAY

SECTION _____

T.6 N. R.13 E

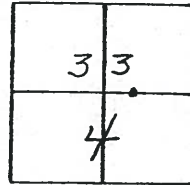
TYPE MONUMENT Set PK. Nail & Washer

ON SURFACE - ~~BELOW~~ A 3" B=ON

LEFT- & PAV'T. - RIGHT BOTH

17' ~~TO~~ RT. EDGE PAVEMENT FACE CURB

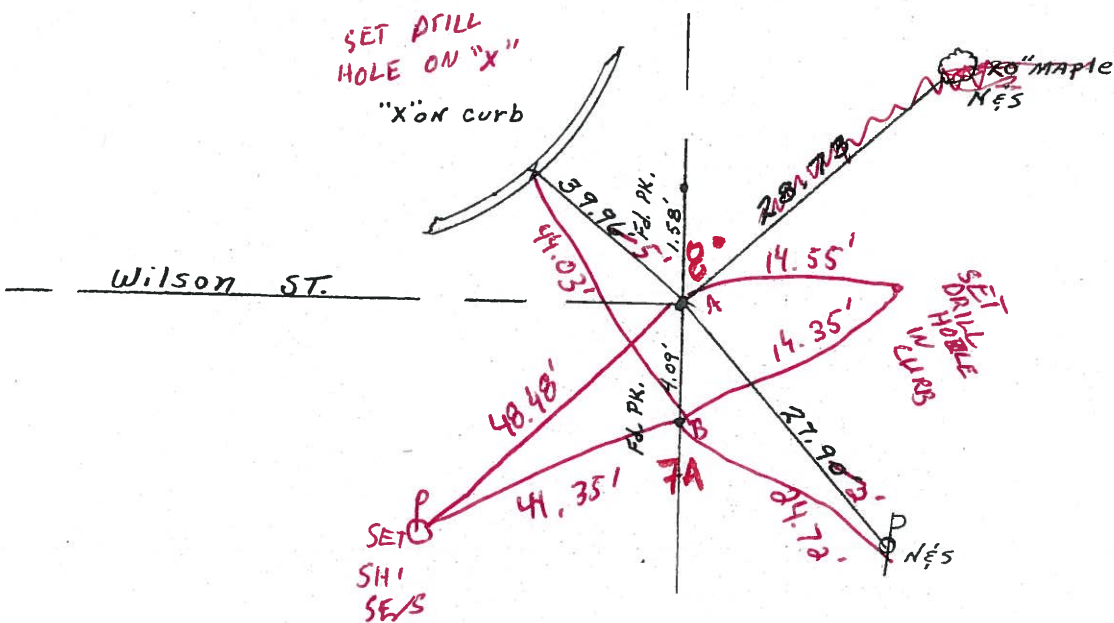
S.L.M. 134+10



Beaumont Notes 5/8/03
50°
 Idoman HC
 Gillis RC



Set Mag Nail & Washer
3-1-04



Dist A to B = 4.5'

Survey S.R.# 1637

O.D.O.T. DISTRICT 2 SURVEY OFFICE

PERSONNEL

REFERENCE NO. 8

SHEET 8 OF 18

NOTES Ripple

H.C. Cheney

R.C. Geyman

DATE 11/04/91

WEATHER Cloudy

TEMP. 29°

ROUTE SR#163

COUNTY OTTAWA

TOWNSHIP CLAY

SECTION _____

T 6 N R 13 E

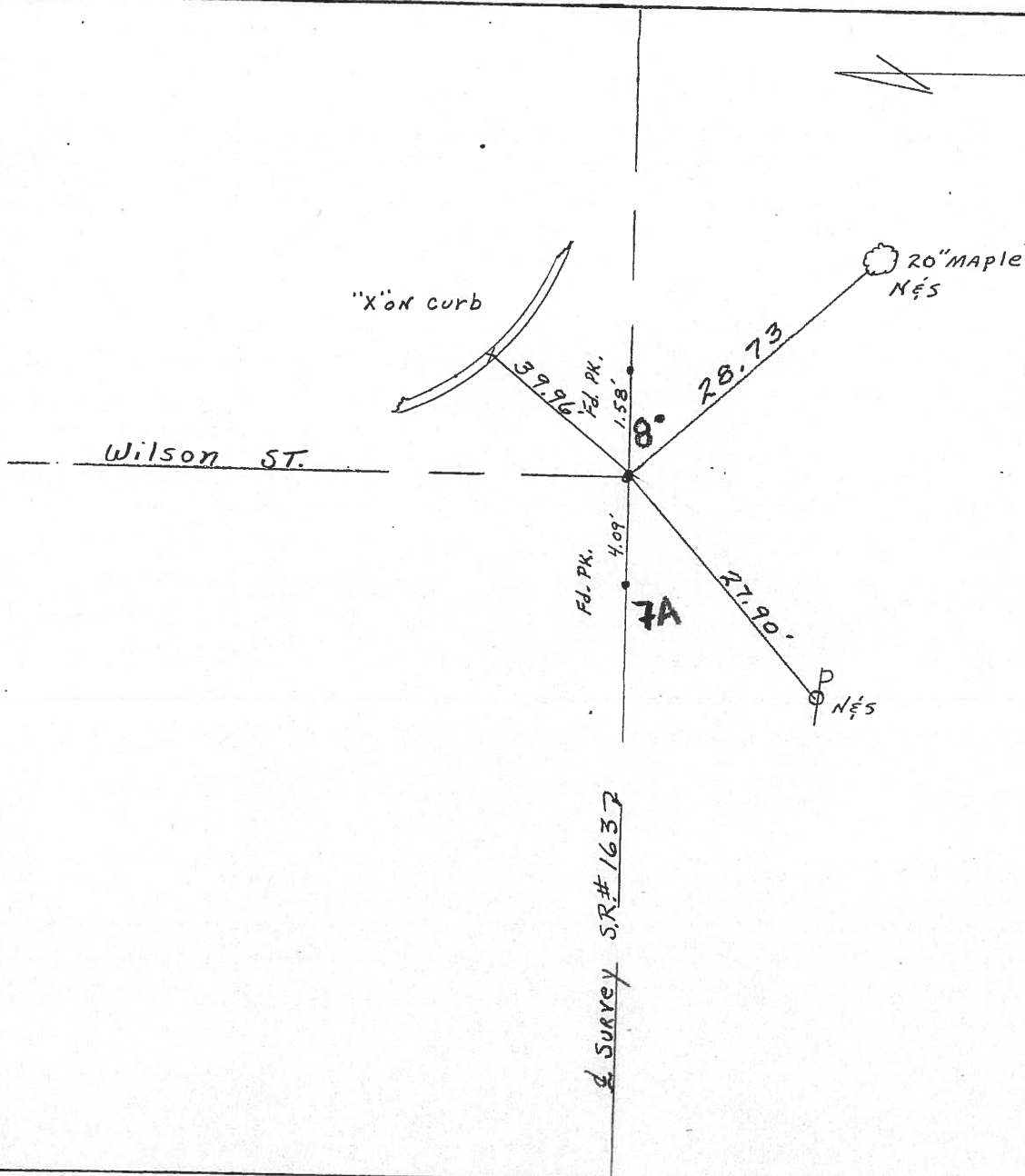
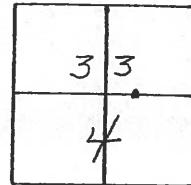
TYPE MONUMENT Set PK. Nail & Washer

ON SURFACE - ~~BELOW~~ _____

LEFT - & PAV'T. - RIGHT _____

12' TO RT. EDGE PAVEMENT

S.L.M. 134+10



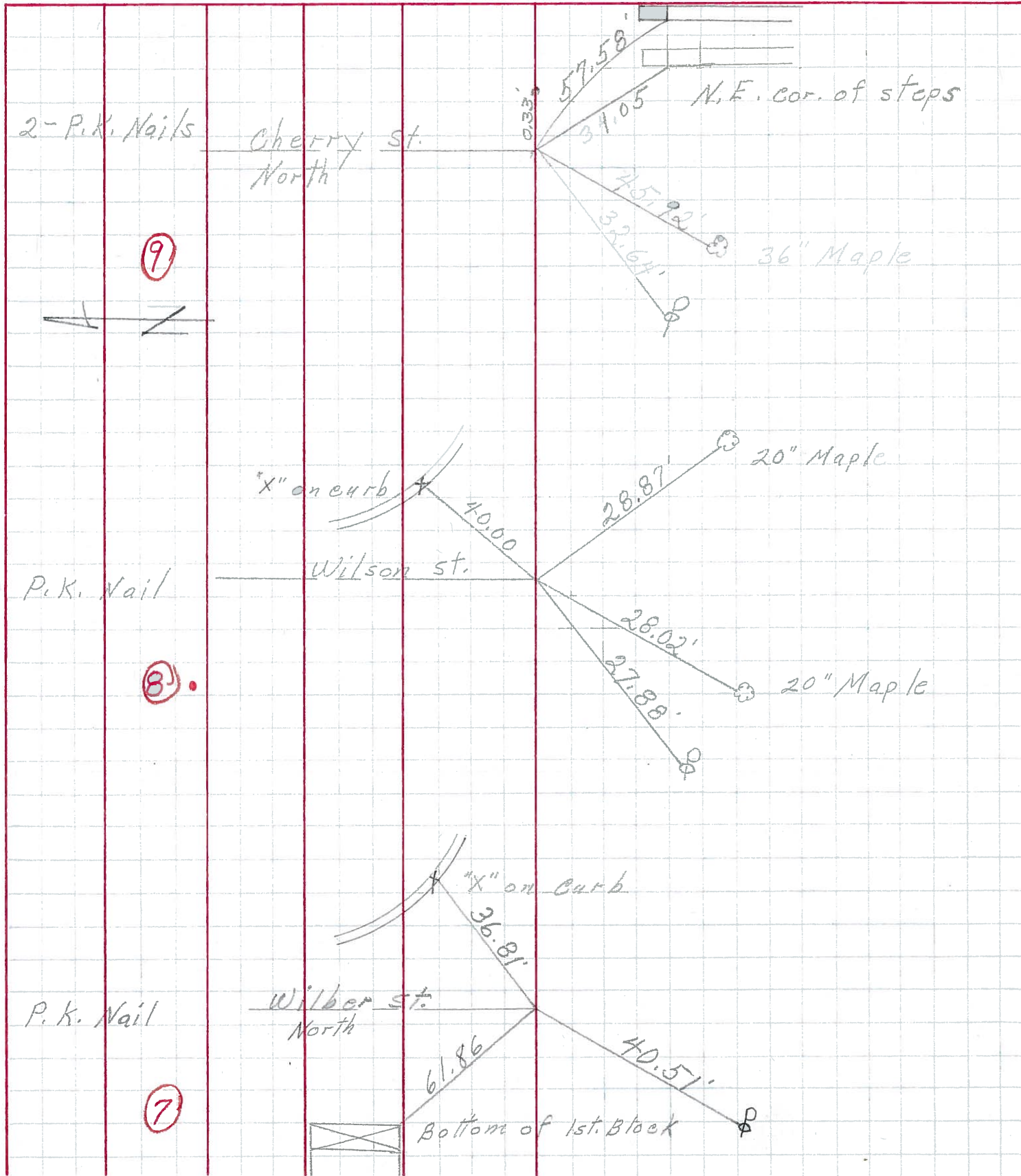
PERSONNEL TITLE PERSONNEL TITLE

COUNTY Ottawa DATE 9-27-70

S. R. 163 WEATHER

SEC. Genoa TEMP.

DESCRIPTION Clay Twp. LEFT CENTER LINE RIGHT JOB NO.



PERSONNEL TITLE PERSONNEL TITLE

Schneider
Mosser
Potts

COUNTY Ottawa DATE 3-13-70

S. R. 163 WEATHER Fair

SEC. Genoa TEMP. 25°

DESCRIPTION Ties for Control Points JOB NO.

LEFT CENTER LINE RIGHT

