

O.D.O.T. DISTRICT 2 SURVEY OFFICE (USE ONLY)

PERSONNEL _____ REFERENCE NO. 11 SHEET 15 OF 23

NOTES CARSON _____ DATE 5/22/17 _____ ROUTE SR 163
 H.C. O'DONNELL _____ WEATHER FAIR _____ COUNTY OTTAWA
 R.C. POORE _____ TEMP. 55° _____ TOWNSHIP CLAY
 _____ RHOADES _____ SECTION 4
 _____ T 6 N R 13 E

TYPE MONUMENT CMON

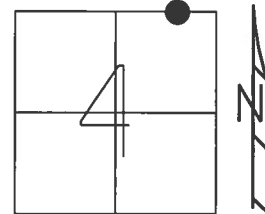
ON SURFACE - ~~BELOW~~ ON _____

LEFT - \odot PAV'T - RIGHT ON, 2.6' W OF \odot N

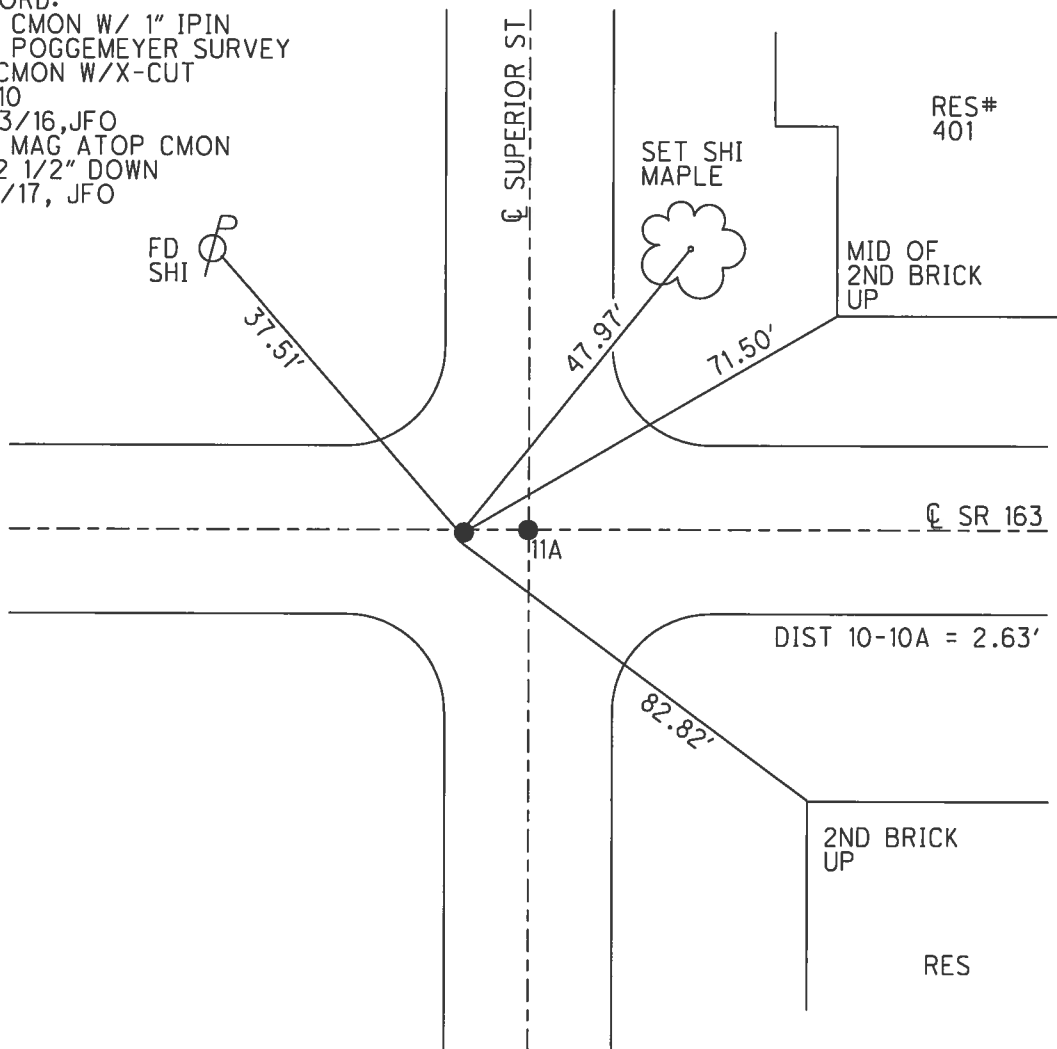
- TO - EDGE PAVEMENT

S.L.M. 145+40.10

GRID: NORTHING: 674727.509 EASTING: 1732569.740



RECORD:
 SET CMON W/ 1" IPIN
 PER POGGEMEYER SURVEY
 FD CMON W/X-CUT
 REF10
 5/23/16, JFO
 SET MAG ATOP CMON
 FD 2 1/2" DOWN
 11/8/17, JFO

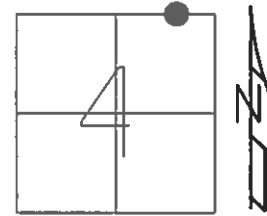


O.D.O.T. DISTRICT 2 SURVEY OFFICE (USE ONLY)

PERSONNEL _____ REFERENCE NO. 10 A SHEET 15 OF 23

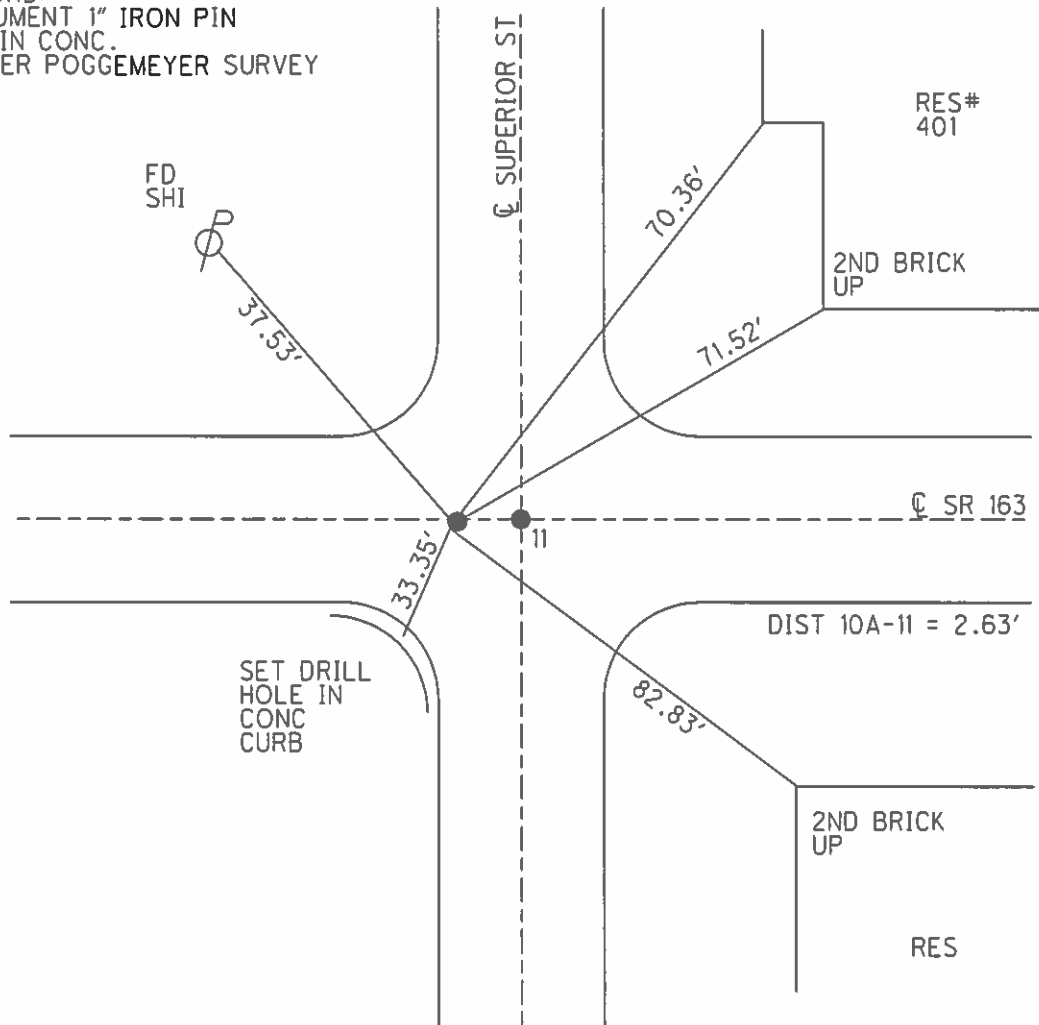
NOTES BEAUMONT DATE 5/8/03 ROUTE SR 163
 H.C. HOMAN WEATHER SUNNY COUNTY OTTAWA
 R.C. GLASS TEMP. 50° TOWNSHIP CLAY
 SECTION 4
 T 6 N R 13 E

TYPE MONUMENT P.K./WASHER
 ON SURFACE - ~~BELOW~~ ON _____
 LEFT - ☉ PAV'T - RIGHT ON, 2.6' W OF ☉ N
 - TO - EDGE PAVEMENT
 S.L.M. 145+74



GRID: NORTHING: _____ EASTING: _____

RECORD:
 MONUMENT 1" IRON PIN
 SET IN CONC.
 AS PER POGGEMEYER SURVEY



O.D.O.T. DISTRICT 2 SURVEY OFFICE

PERSONNEL

REFERENCE NO. 11

SHEET 11 OF 18

NOTES Ripple

H.C. Cheney

DATE 11/04/91

ROUTE SR#163

R.C. Geyman

WEATHER Cloudy

COUNTY OTTAWA

TEMP. 29°

TOWNSHIP CLAY

SECTION 33E4

T. 6 N. R. 13 E.

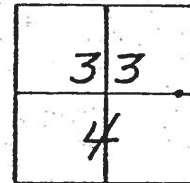
TYPE MONUMENT Set P.K. Nail & Washer

ON SURFACE - ~~BELOW~~ A=1 1/2" BELOW B=ON

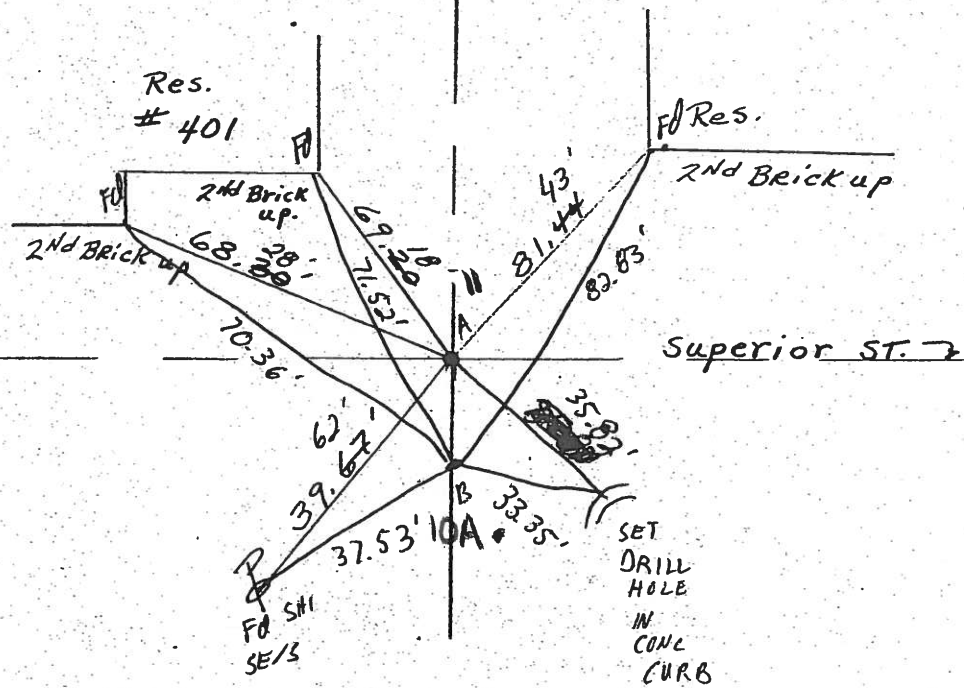
~~12' TO RT. EDGE PAV'T.~~ - RIGHT 1' A=yes B=26' wof Superior St

12' TO RT. EDGE PAVEMENT

S.L.M. 145+74



Beaumont notes 5/8/03
 Homan HC 50°
 Bloss RC



Dist A to B = 2.63'

Survey S.R. #1637