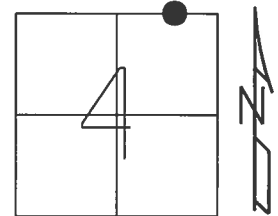


O.D.O.T. DISTRICT 2 SURVEY OFFICE (USE ONLY)

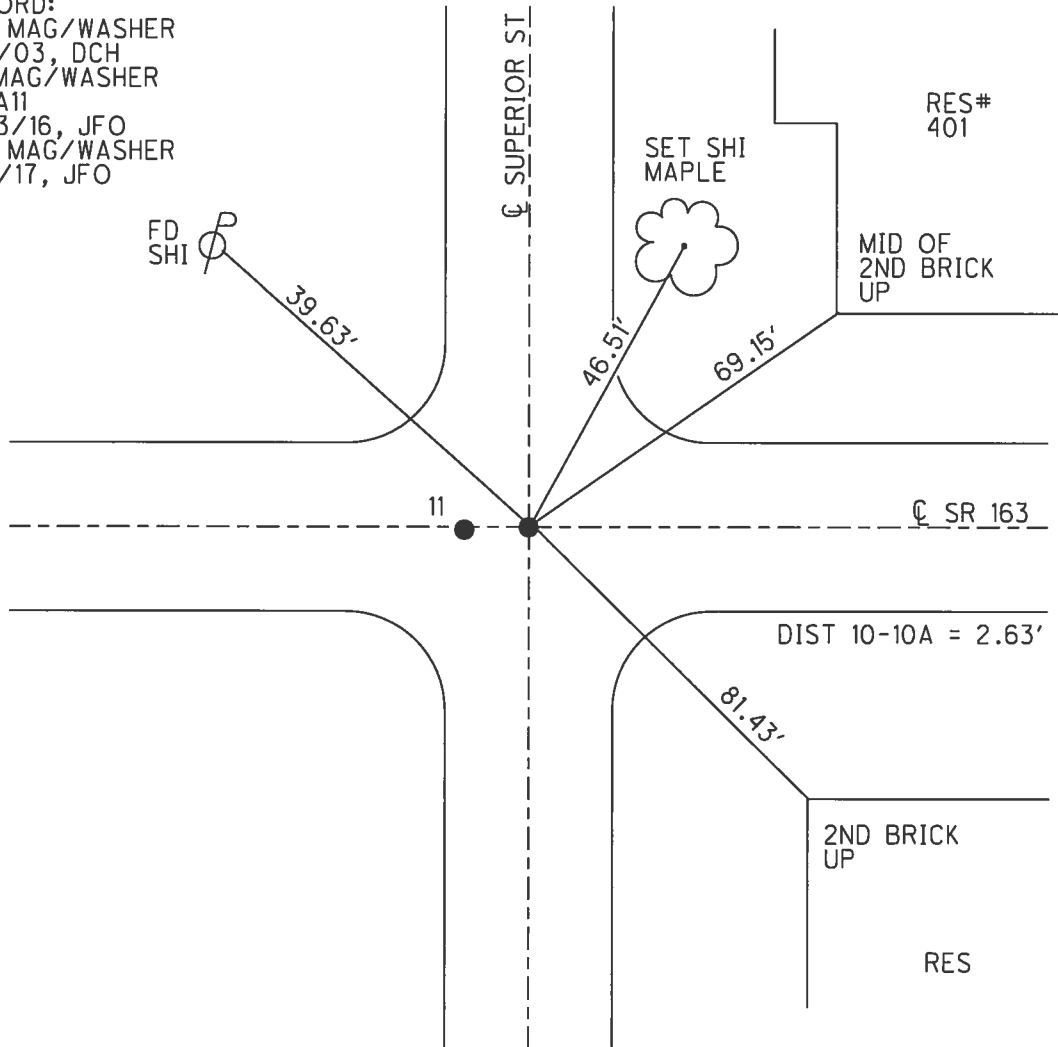
PERSONNEL _____ REFERENCE NO. 11 A SHEET 16 OF 23
 NOTES CARSON DATE 5/22/17 ROUTE SR 163
 H.C. O'DONNELL WEATHER FAIR COUNTY OTTAWA
 R.C. POORE TEMP. 55° TOWNSHIP CLAY
RHOADES SECTION 4
T 6 N R 13 E

TYPE MONUMENT MAG/WASHER
~~ON SURFACE~~ - BELOW 1.5"
 LEFT - ☉ PAV'T - RIGHT ON
- TO - EDGE PAVEMENT
 S.L.M. 145+42.73



GRID: NORTHING: 674727.600 EASTING: 1732572.358

RECORD:
 SET MAG/WASHER
 3/3/03, DCH
 FD MAG/WASHER
 REFA11
 5/23/16, JFO
 SET MAG/WASHER
 11/8/17, JFO

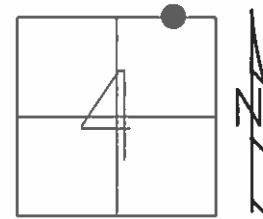


O.D.O.T. DISTRICT 2 SURVEY OFFICE (USE ONLY)

PERSONNEL _____ REFERENCE NO. 11 SHEET 16 OF 23

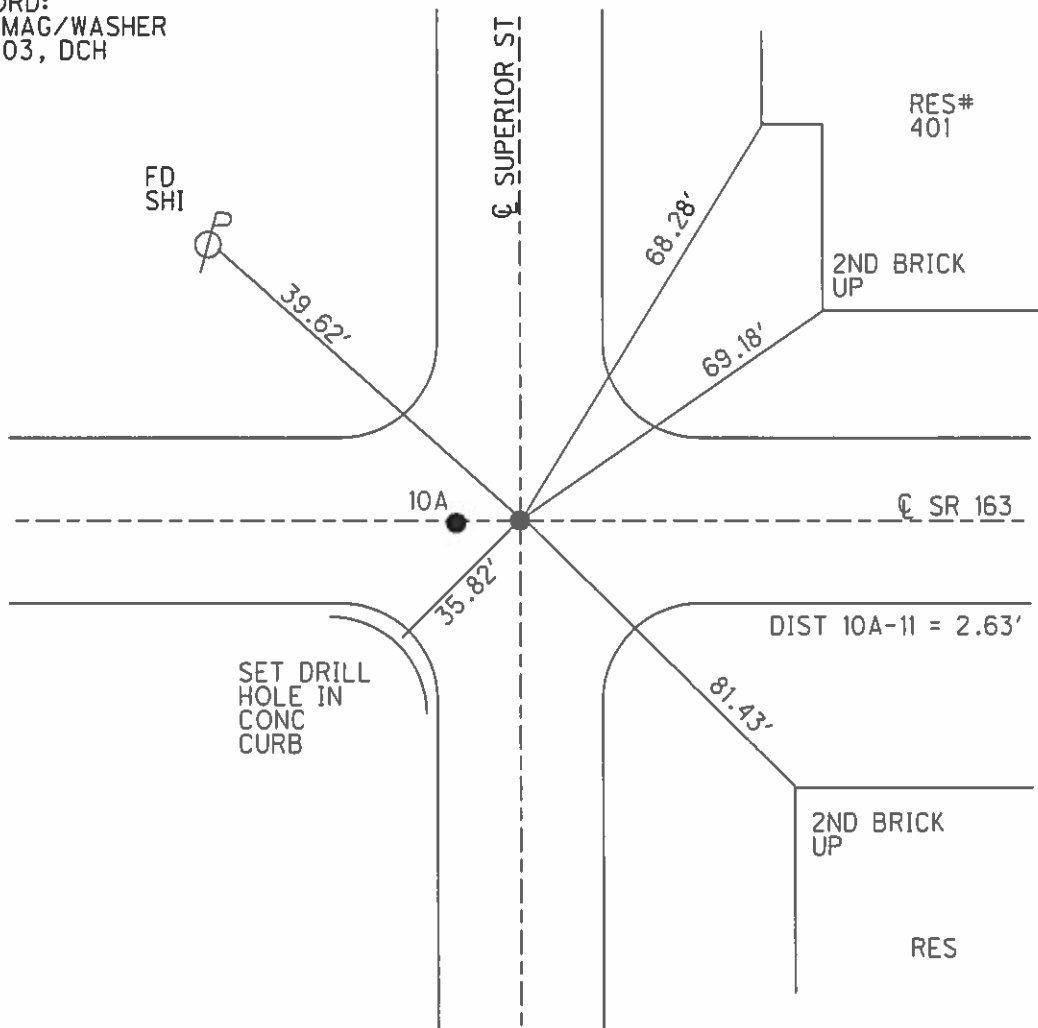
NOTES BEAUMONT _____ DATE 5/8/03 _____ ROUTE SR 163
 H.C. HOMAN _____ WEATHER SUNNY _____ COUNTY OTTAWA
 R.C. GLASS _____ TEMP. 50° _____ TOWNSHIP CLAY
 _____ SECTION 4
 _____ T 6 N R 13 E

TYPE MONUMENT P.K./WASHER
 ON SURFACE - ~~BELOW~~ 1.5"
 LEFT - ☉ PAV'T - RIGHT ON
_____ TO _____ EDGE PAVEMENT
 S.L.M. 145+74



GRID: NORTHING: _____ EASTING: _____

RECORD:
 SET MAG/WASHER
 3-3-03, DCH



O.D.O.T. DISTRICT 2 SURVEY OFFICE

PERSONNEL

REFERENCE NO. 11

SHEET 11 OF 18

NOTES Ripple

H.C. Cheney

DATE 11/04/91

ROUTE S.R.#163

R.C. Geyman

WEATHER Cloudy

COUNTY OTTAWA

TEMP. 29°

TOWNSHIP CLAY

SECTION 33E4

T6 N R 13 E

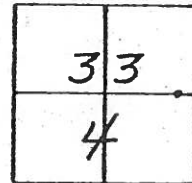
TYPE MONUMENT Set P.K. Nail & Washer

ON SURFACE - ~~BELOW~~ A=1 1/2" BELOW B=ON

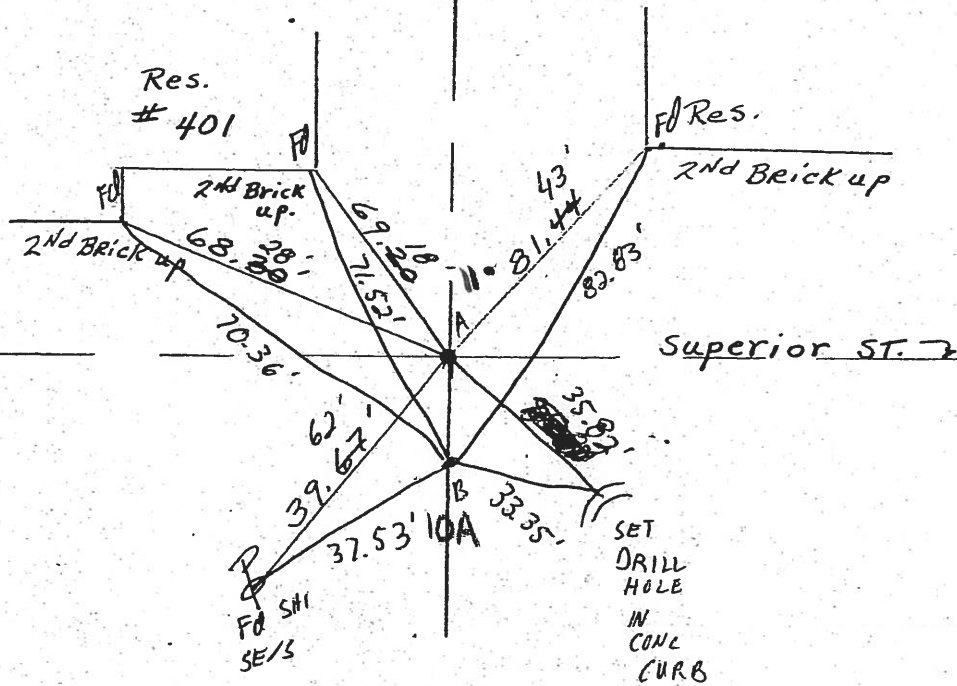
~~1' TO RT. EDGE PAV'T.~~ RIGHT 1' A=yes B=2.6' wof Superior ST

12' TO RT. EDGE PAVEMENT

S.L.M. 145+74



Beaumont notes 5/8/03
 Homan HC 50°
 Bloss RC



Survey S.R. #1637

Dist A to B = 2.63'

O.D.O.T. DISTRICT 2 SURVEY OFFICE

PERSONNEL

REFERENCE NO. 11

SHEET 11 OF 18

NOTES Ripple

H.C. Cheney

R.C. Geyman

DATE 11/04/91

WEATHER Cloudy

TEMP. 29°

ROUTE SR#163

COUNTY OTTAWA

TOWNSHIP CLAY

SECTION 33¹/₄

T6 N R 13 E

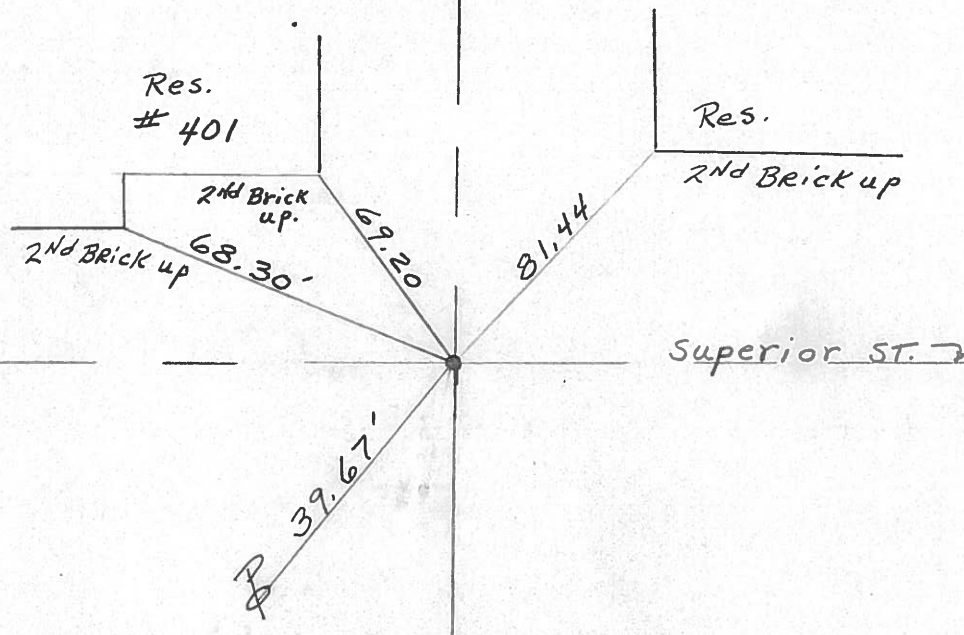
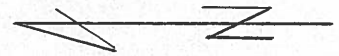
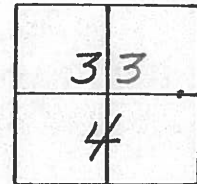
TYPE MONUMENT Set P.K. Nail & Washer

ON SURFACE - ~~BELOW~~

~~LEFT~~ - 1' PAV'T. - RIGHT

12' TO RT. EDGE PAVEMENT

S.L.M. 145+74



Survey S.R. # 1637

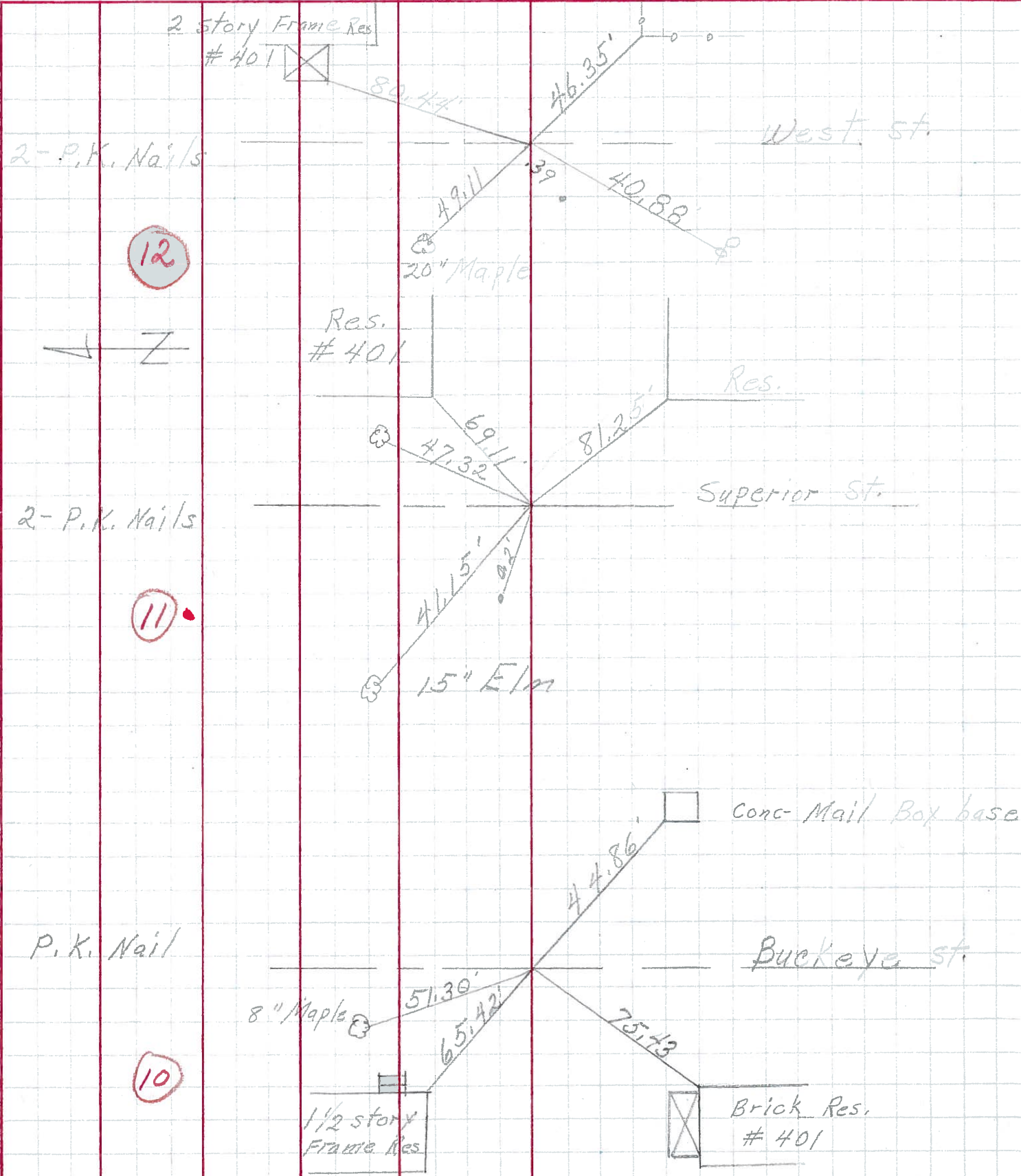
PERSONNEL TITLE PERSONNEL TITLE

COUNTY Ottawa DATE 9-70

S. R. 163 WEATHER

SEC. Genoa TEMP.

DESCRIPTION Clay Twp. LEFT CENTER LINE RIGHT JOB NO.



12

11

10

Z

2 story Frame Res #401

2-P.K. Nails

2-P.K. Nails

P.K. Nail

Res. #401

1 1/2 story Frame Res

20" Maple

15" Elm

8" Maple

Res.

Conc Mail Box base

Buckeye St

Brick Res. #401

West St

Superior St

PERSONNEL TITLE PERSONNEL TITLE

Schneider
Mosser
Potts

COUNTY Ottawa DATE 3-13-70

S. R. 163 WEATHER Fair

SEC. Genoa TEMP. 30°

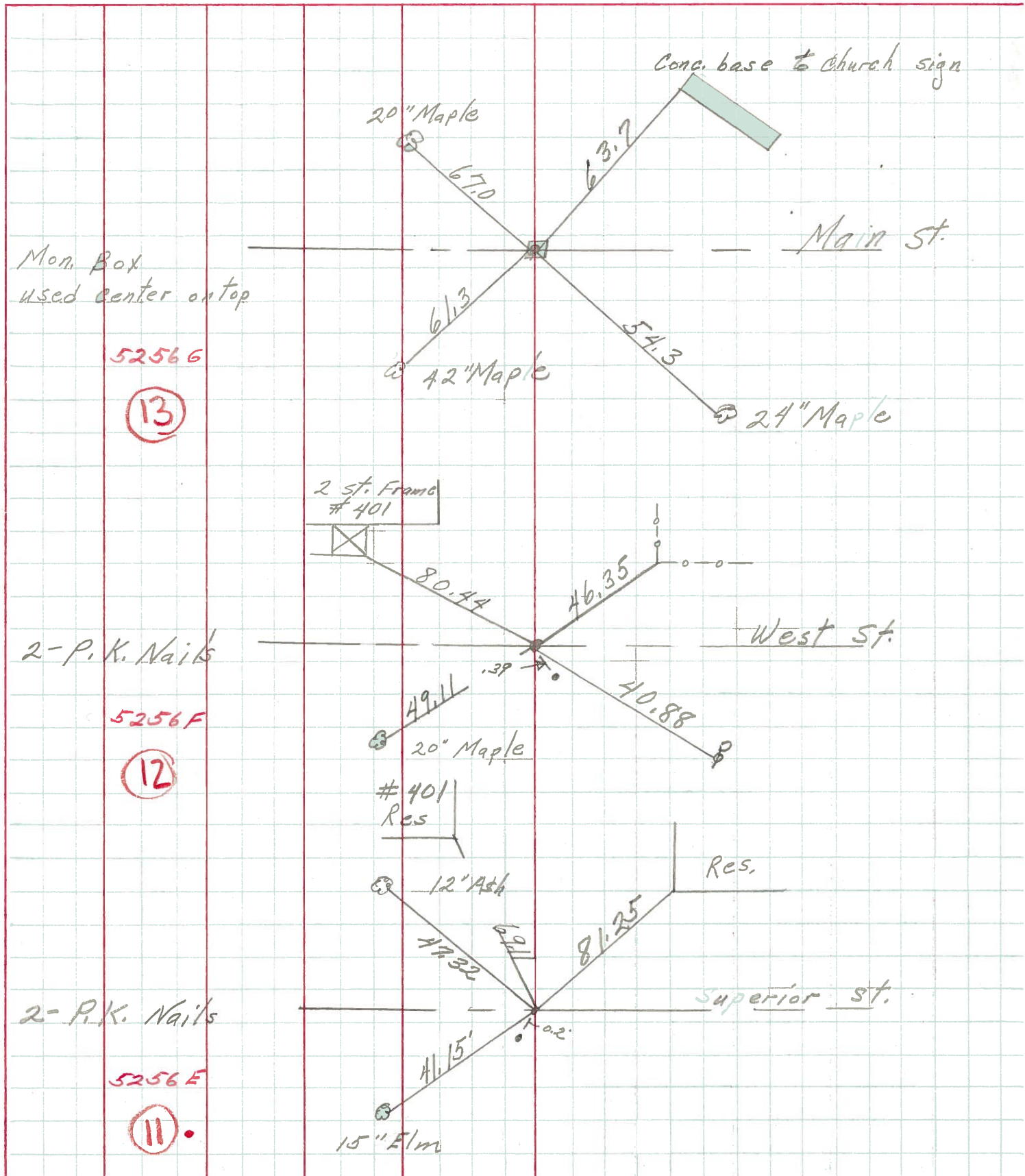
DESCRIPTION Ties for Control Points

JOB NO.

LEFT

CENTER LINE

RIGHT



52566

13

5256F

12

5256E

11