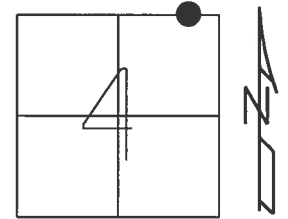


O.D.O.T. DISTRICT 2 SURVEY OFFICE (USE ONLY)

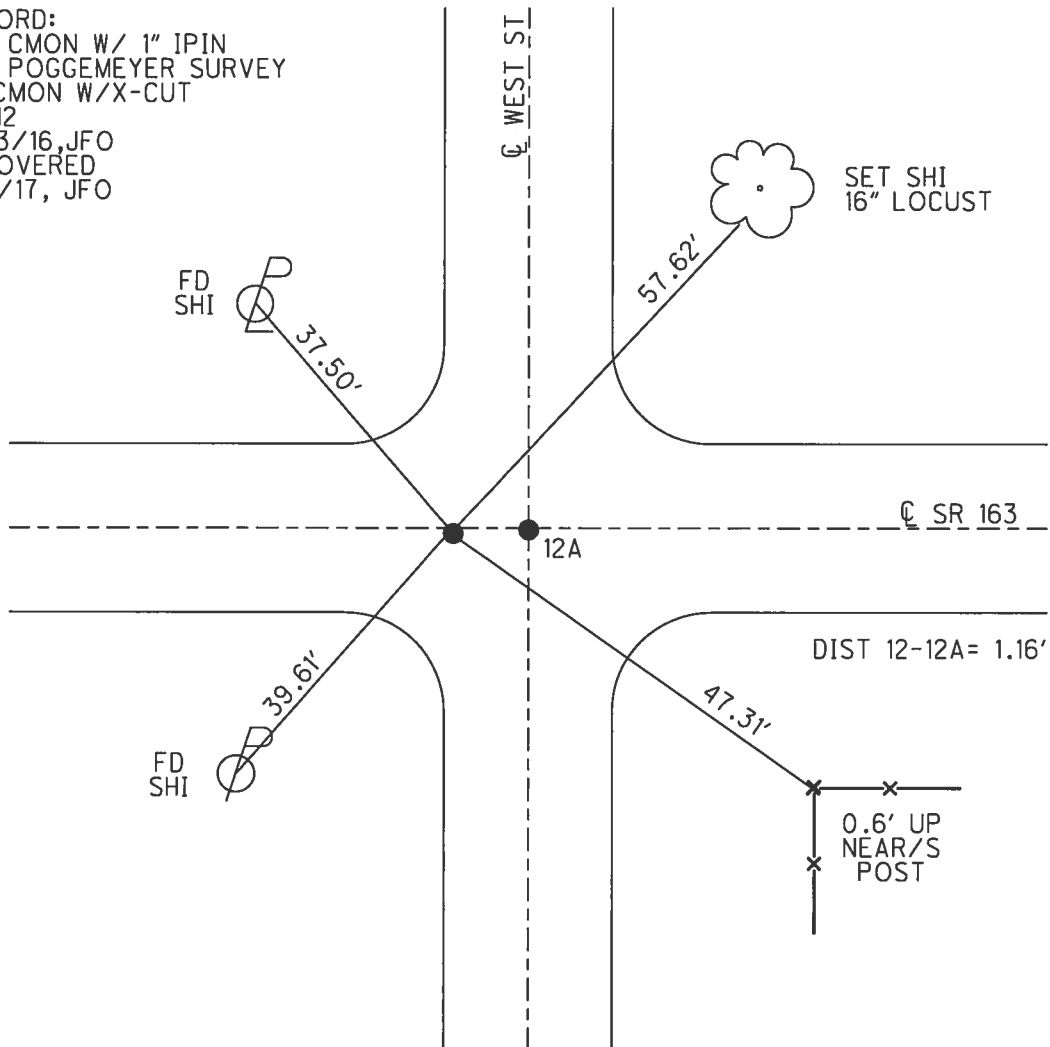
PERSONNEL \_\_\_\_\_ REFERENCE NO. 12 SHEET 17 OF 23  
 NOTES CARSON \_\_\_\_\_ DATE 5/22/17 \_\_\_\_\_ ROUTE SR 163  
 H.C. O'DONNELL \_\_\_\_\_ WEATHER FAIR \_\_\_\_\_ COUNTY OTTAWA  
 R.C. POORE \_\_\_\_\_ TEMP. 55° \_\_\_\_\_ TOWNSHIP CLAY  
 \_\_\_\_\_ RHOADES \_\_\_\_\_ SECTION 4  
 \_\_\_\_\_ T 6 N R 13 E

TYPE MONUMENT CMON  
 ON SURFACE - ~~BELOW~~ ON \_\_\_\_\_  
 LEFT - ☉ PAV'T - RIGHT ON \_\_\_\_\_  
12' TO RT EDGE PAVEMENT  
 S.L.M. 149+28.61



GRID: NORTHING: 674730.332 EASTING: 1732958.243

RECORD:  
 SET CMON W/ 1" IPIN  
 PER POGGEMEYER SURVEY  
 FD CMON W/X-CUT  
 REF12  
 5/23/16, JFO  
 UNCOVERED  
 11/8/17, JFO

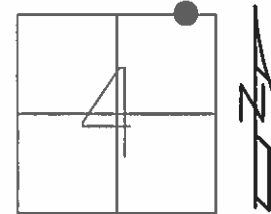


O.D.O.T. DISTRICT 2 SURVEY OFFICE (USE ONLY)

PERSONNEL \_\_\_\_\_ REFERENCE NO. 11 A SHEET 17 OF 23

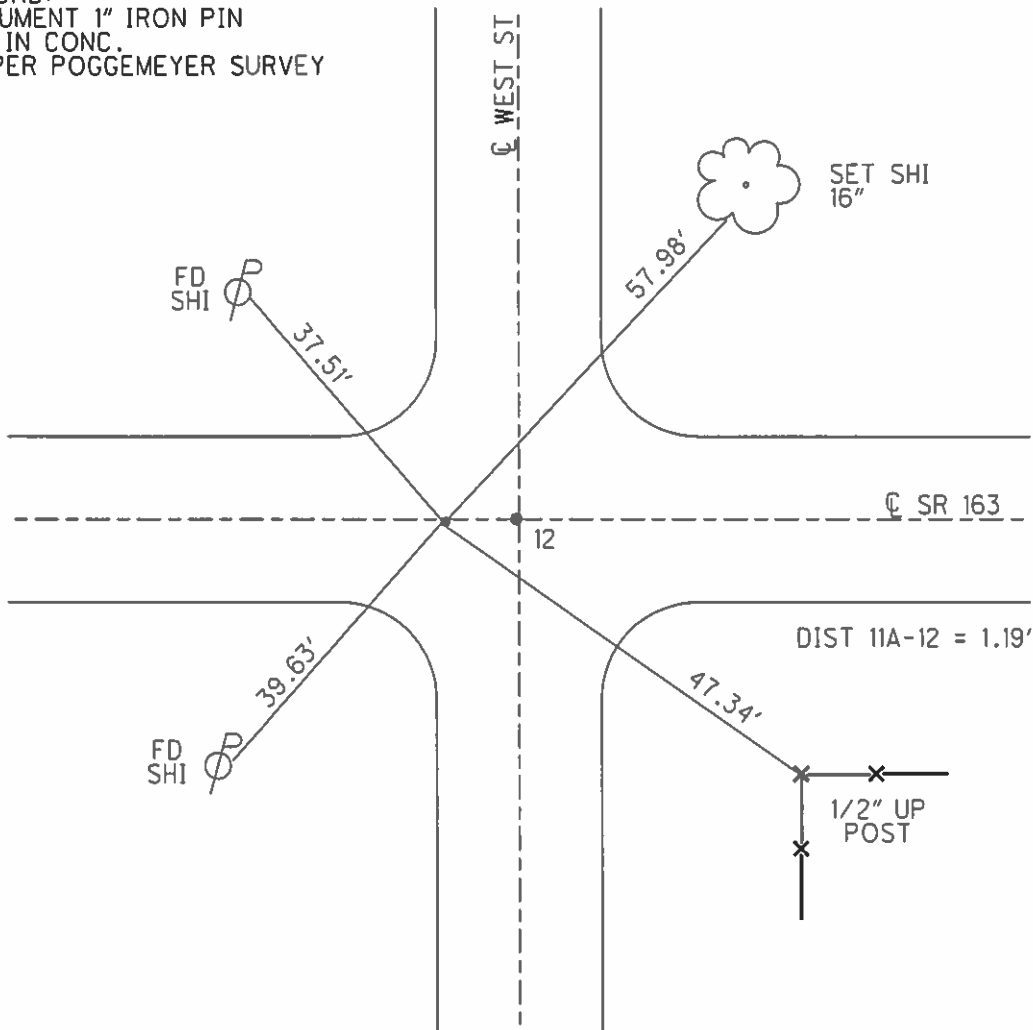
NOTES BEAUMONT DATE 5/8/03 ROUTE SR 163  
 H.C. HOMAN WEATHER SUNNY COUNTY OTTAWA  
 R.C. GLASS TEMP. 50° TOWNSHIP CLAY  
 \_\_\_\_\_ SECTION 4  
 \_\_\_\_\_ T 6 N R 13 E

TYPE MONUMENT P.K./WASHER  
 ON SURFACE - ~~BELOW~~ ON \_\_\_\_\_  
 LEFT - ☉ PAV'T - RIGHT ON \_\_\_\_\_  
12' TO RT EDGE PAVEMENT  
 S.L.M. 149+64



GRID: NORTHING: \_\_\_\_\_ EASTING: \_\_\_\_\_

RECORD:  
 MONUMENT 1" IRON PIN  
 SET IN CONC.  
 AS PER POGGEMEYER SURVEY



# O.D.O.T. DISTRICT 2 SURVEY OFFICE

PERSONNEL

REFERENCE NO. 12

SHEET 12 OF 18

NOTES Ripple

H.C. BARBOUR

DATE 11/04/91

ROUTE SR#163

R.C. Geyman

WEATHER Cloudy

COUNTY OTTAWA

TEMP. 29°

TOWNSHIP CLAY

SECTION 33 & 4

T.6 N. R.13 E

TYPE MONUMENT SET P.K. NAIL WASHER  
ON SURFACE - BELOW BOTH YES

~~LEFT~~ - PAV'T. - RIGHT .50' AXES

12 TO RT. EDGE PAVEMENT

S.L.M. 149+64

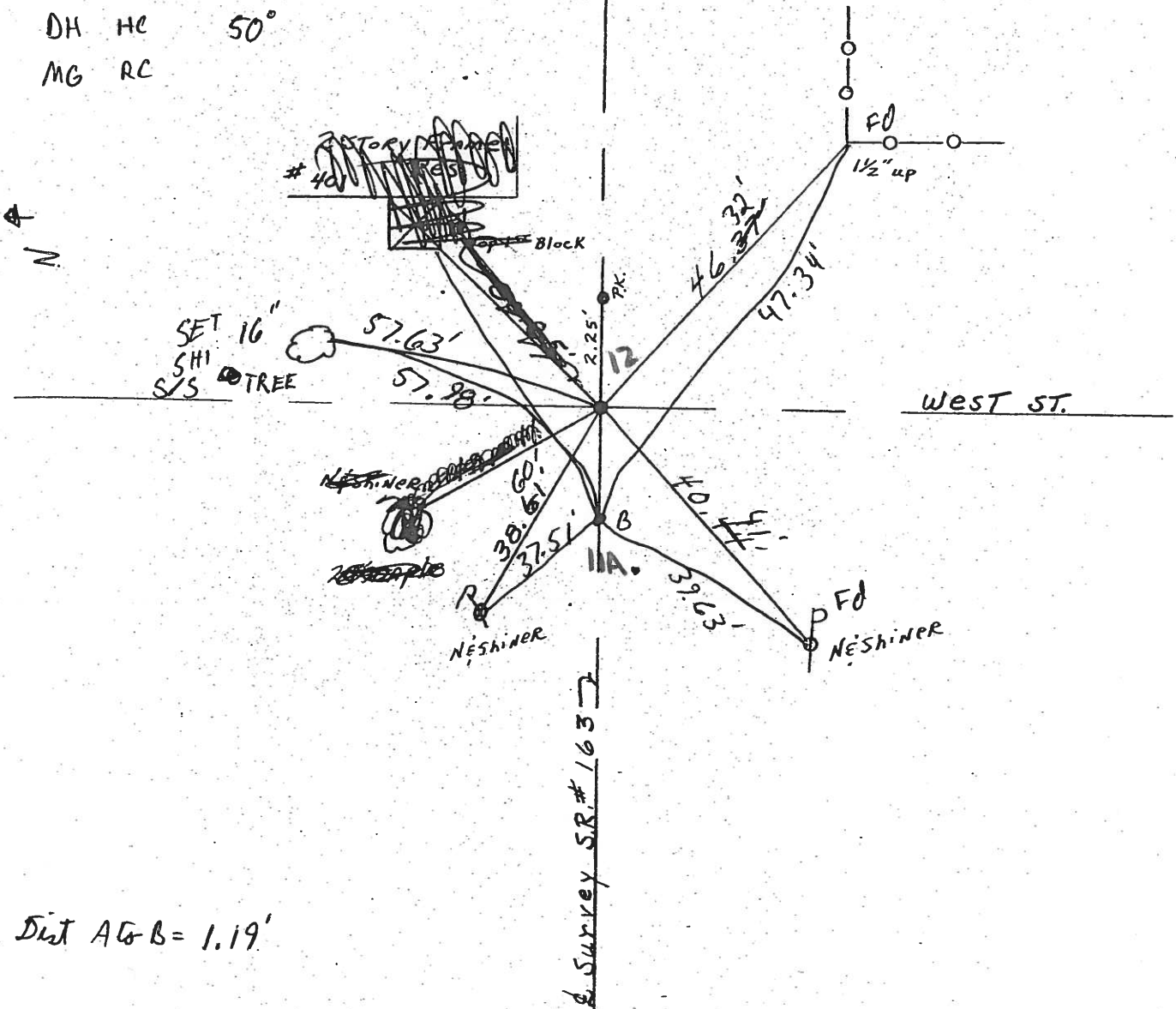
33	4
----	---



CB notes 5/8/03

DH HC 50°

MG RC



Dist A to B = 1.19'