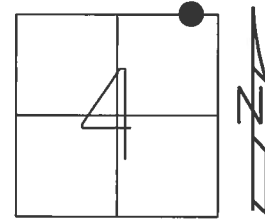


O.D.O.T. DISTRICT 2 SURVEY OFFICE (USE ONLY)

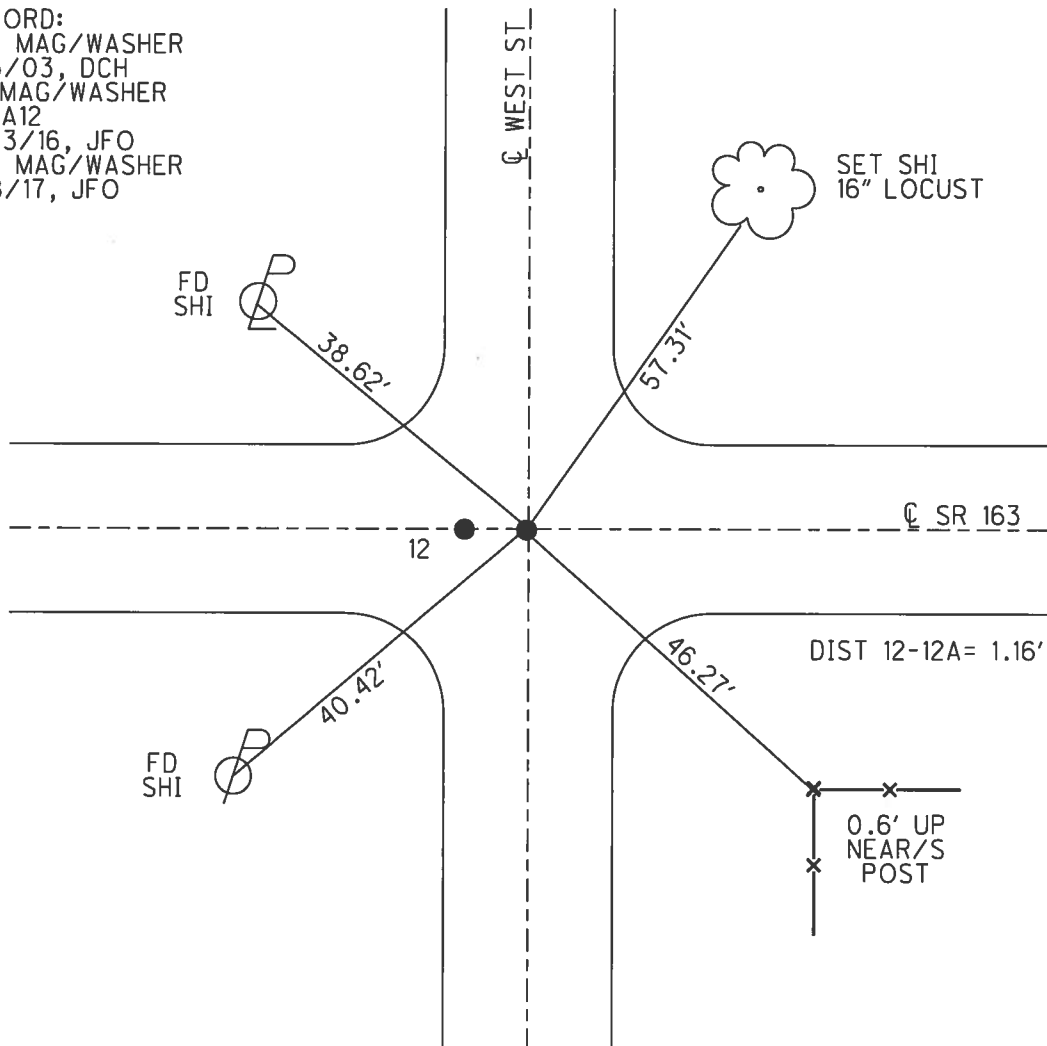
PERSONNEL _____ REFERENCE NO. 12 A SHEET 18 OF 23
 NOTES CARSON DATE 5/22/17 ROUTE SR 163
 H.C. O'DONNELL WEATHER FAIR COUNTY OTTAWA
 R.C. POORE TEMP. 55° TOWNSHIP CLAY
RHOADES SECTION 4
 T 6 N R 13 E

TYPE MONUMENT MAG/WASHER
 ON SURFACE - ~~BELOW~~ ON
 LEFT - ☉ PAV'T - RIGHT ON
12' TO RT EDGE PAVEMENT
 S.L.M. 149+29.77



GRID: NORTHING: 674730.151 EASTING: 1732959.395

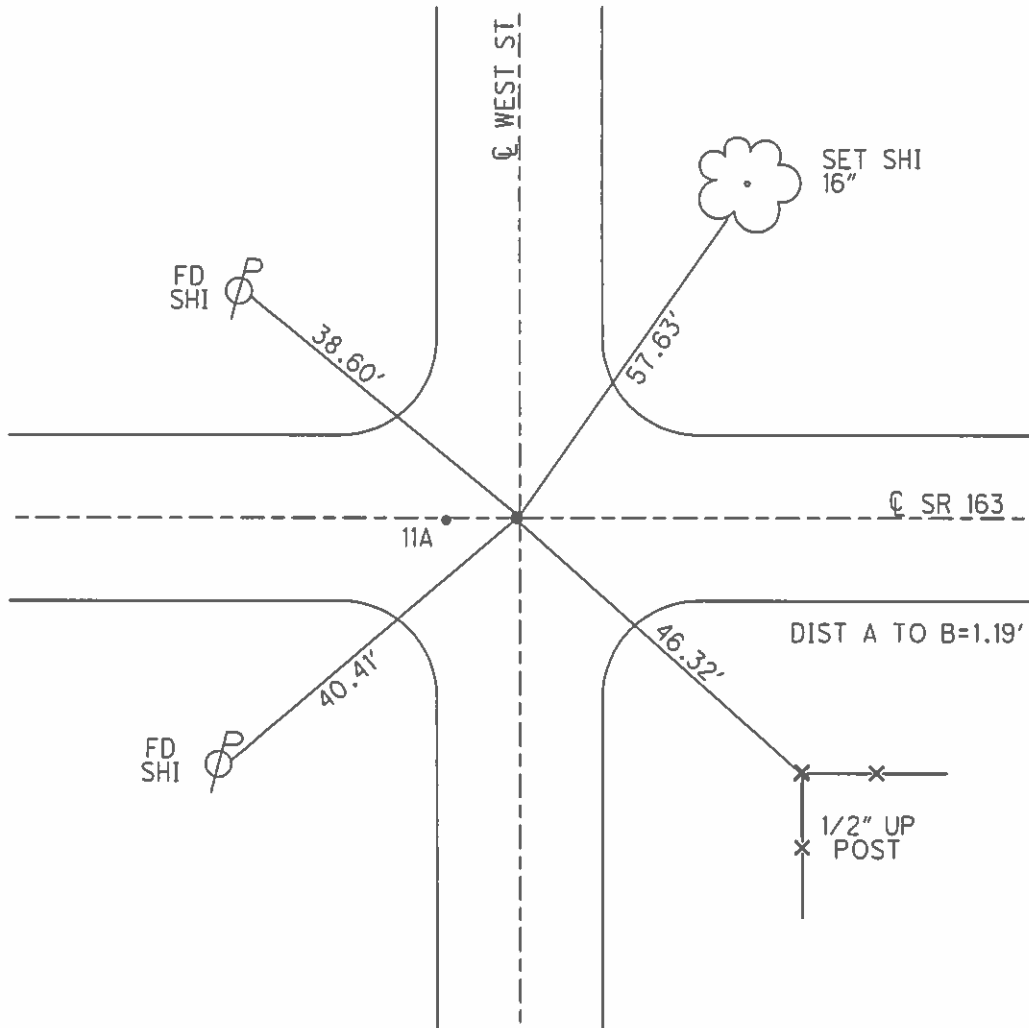
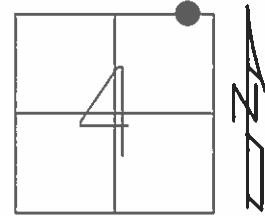
RECORD:
 SET MAG/WASHER
 3/3/03, DCH
 FD MAG/WASHER
 REFA12
 5/23/16, JFO
 SET MAG/WASHER
 11/8/17, JFO



O.D.O.T. DISTRICT 2 SURVEY OFFICE (USE ONLY)

PERSONNEL _____ REFERENCE NO. 12 SHEET 18 OF 23
 NOTES BEAUMONT DATE 5/8/03 ROUTE SR 163
 H.C. HOMAN WEATHER SUNNY COUNTY OTTAWA
 R.C. GLASS TEMP. 50° TOWNSHIP CLAY
 _____ SECTION 4
 _____ T 6 N R 13 E

TYPE MONUMENT P.K./WASHER
 ON SURFACE - ~~BELOW~~ ON
 LEFT - ☉ PAV'T - RIGHT ON
12' TO RT EDGE PAVEMENT
 S.L.M. 149+65.19
 GRID: NORTHING: _____ EASTING: _____



O.D.O.T. DISTRICT 2 SURVEY OFFICE

PERSONNEL

REFERENCE NO. 12

SHEET 12 OF 18

NOTES Ripple

H.C. BARBOUR

DATE 11/04/91

ROUTE SR#163

R.C. Geyman

WEATHER cloudy

COUNTY OTTAWA

TEMP. 29°

TOWNSHIP CLAY

SECTION 33 & 4

T. 6 N. R. 13 E

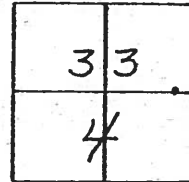
TYPE MONUMENT SET PK. NAIL & WASHER

ON SURFACE - ~~BELOW~~ BOTH YES

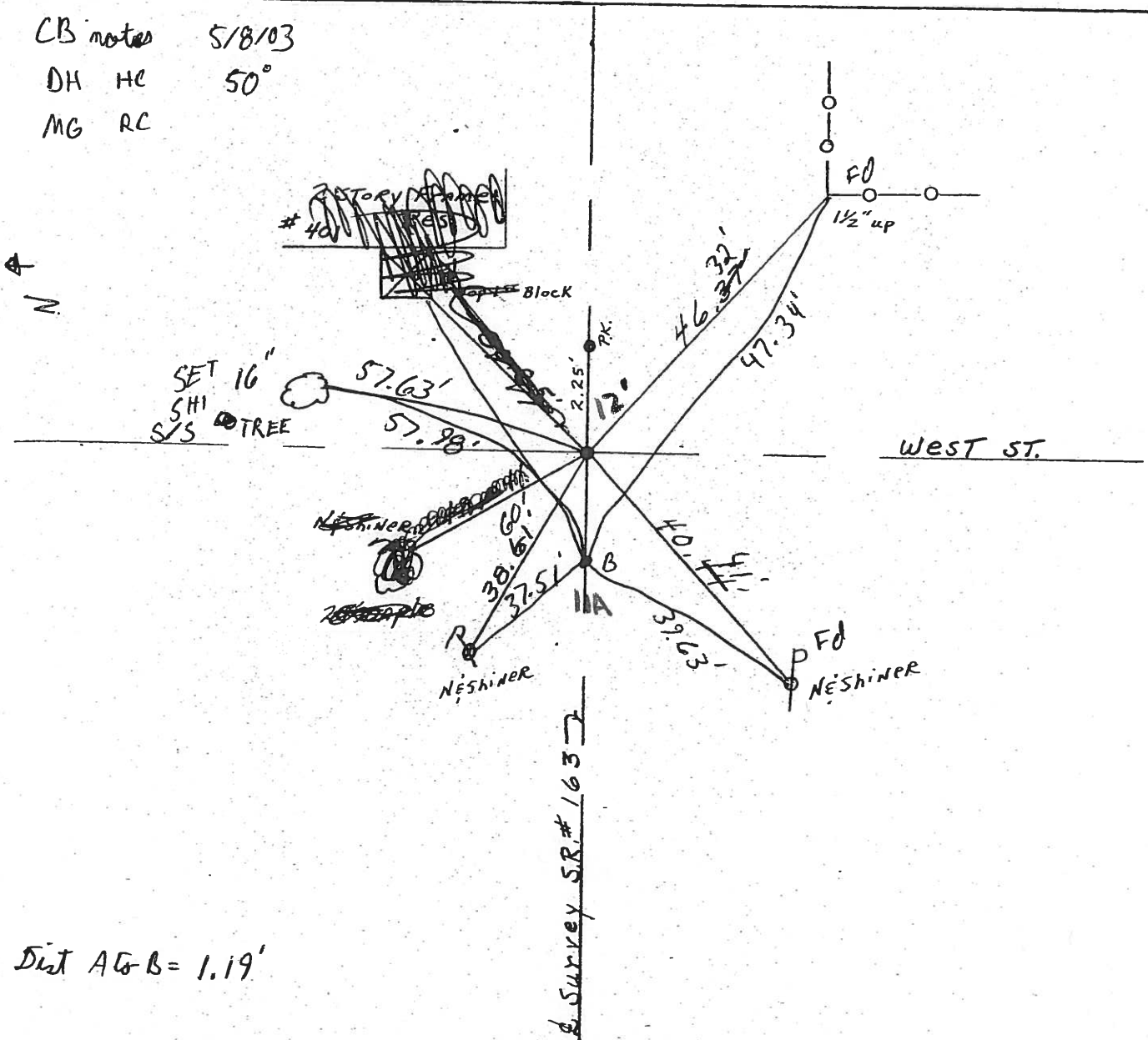
~~LEFT~~ - PAV'T. - RIGHT .50' AVES

12 TO RT. EDGE PAVEMENT

S.L.M. 149+64



CB notes 5/8/03
 DH HC 50°
 MG RC



Dist A-G-B = 1.19'

O.D.O.T. DISTRICT 2 SURVEY OFFICE

PERSONNEL

REFERENCE NO. 12

SHEET 12 OF 18

NOTES Ripple

H.C. BARBOUR

R.C. GEYMAN

DATE 11/04/91

WEATHER Cloudy

TEMP. 29°

ROUTE SR#163

COUNTY OTAWA

TOWNSHIP CLAY

SECTION 33 & 4

T 6 N R 13 E

TYPE MONUMENT Set P.K. Nail & Washer

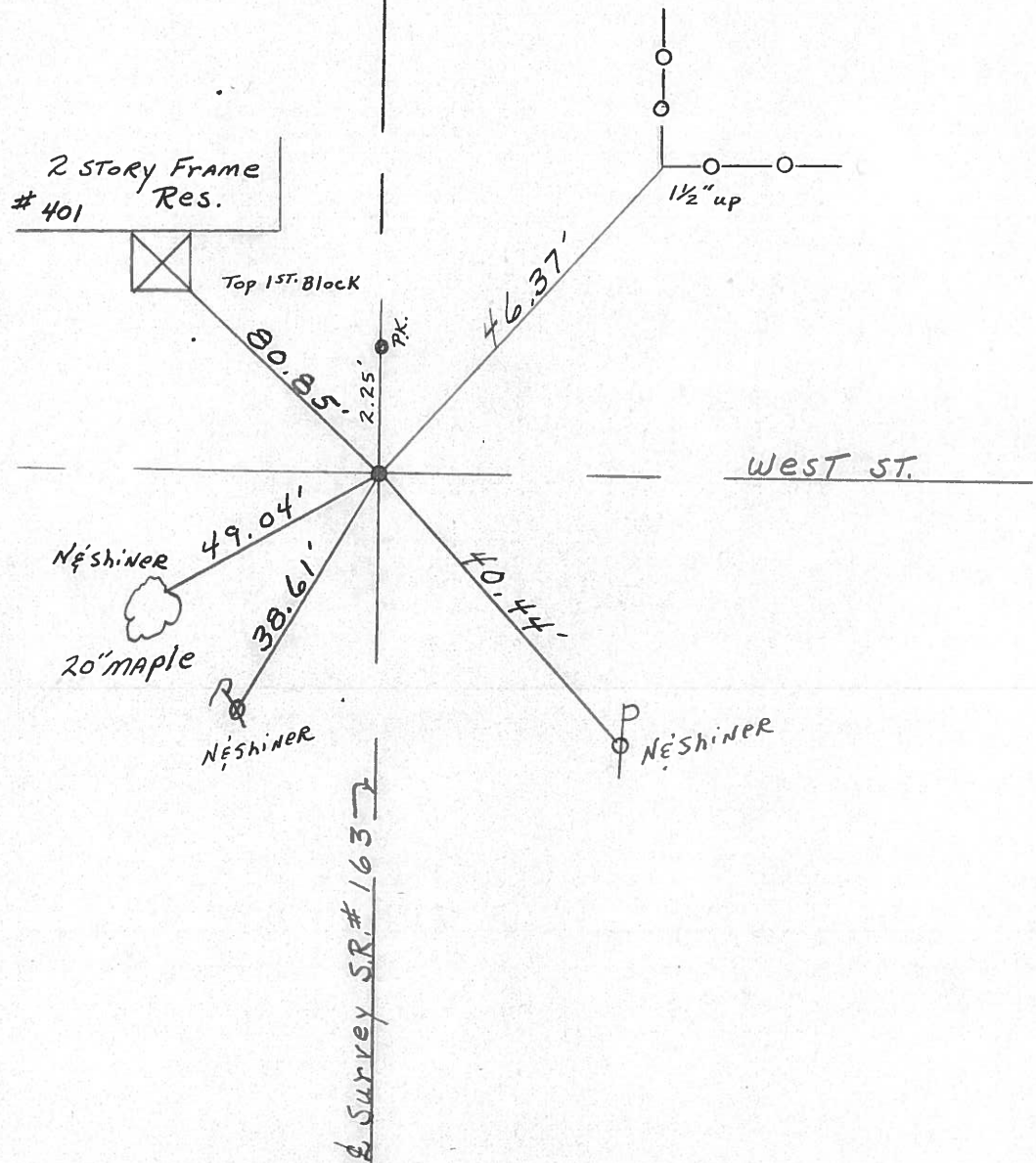
ON SURFACE - BELOW

LEFT - & Pav't. - RIGHT .50'

12 TO RT. EDGE PAVEMENT

S.L.M. 149+64

| | |
|----|---|
| 33 | 4 |
|----|---|



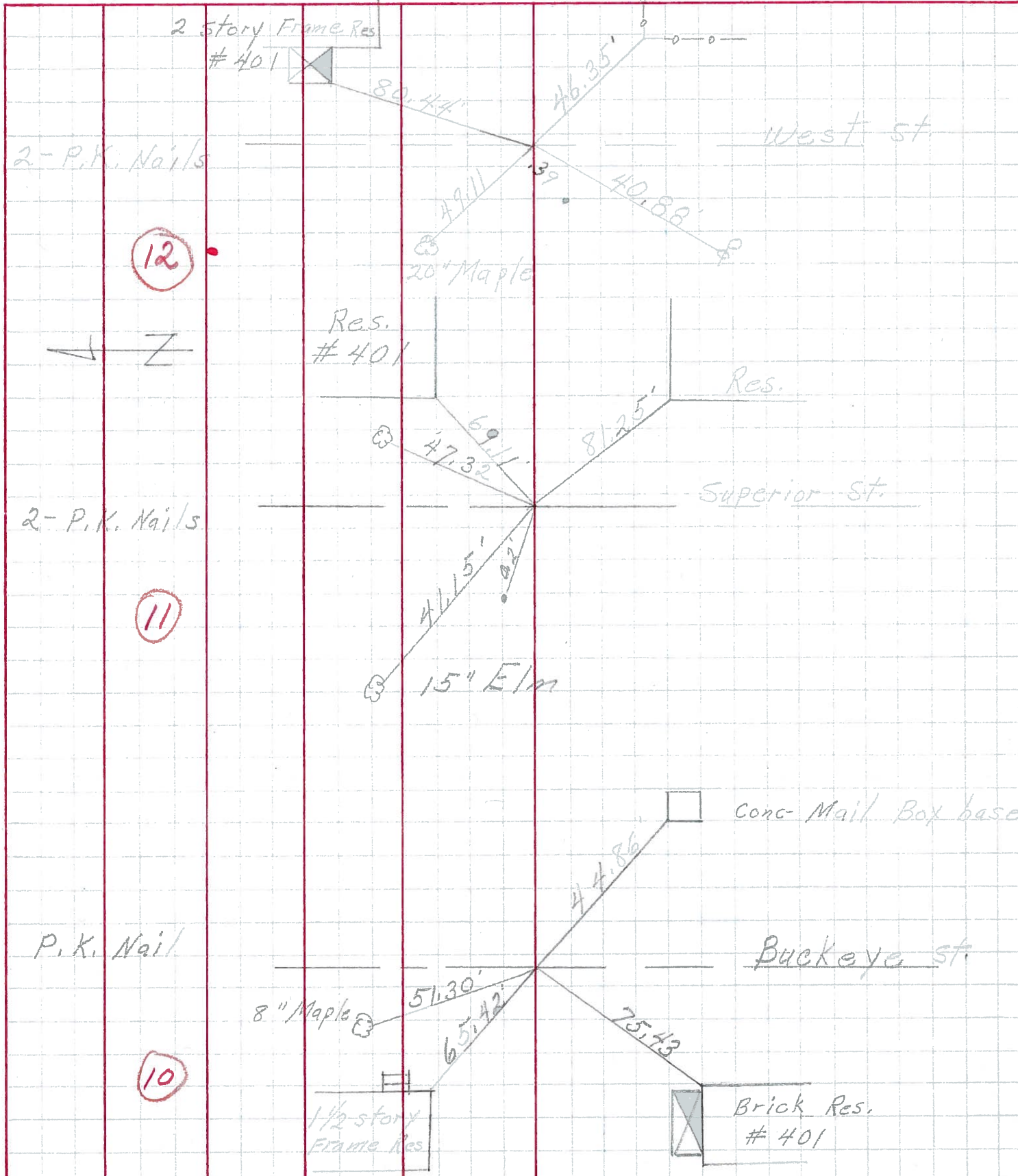
PERSONNEL TITLE PERSONNEL TITLE

COUNTY Ottawa DATE 9-70

S. R. 163 WEATHER

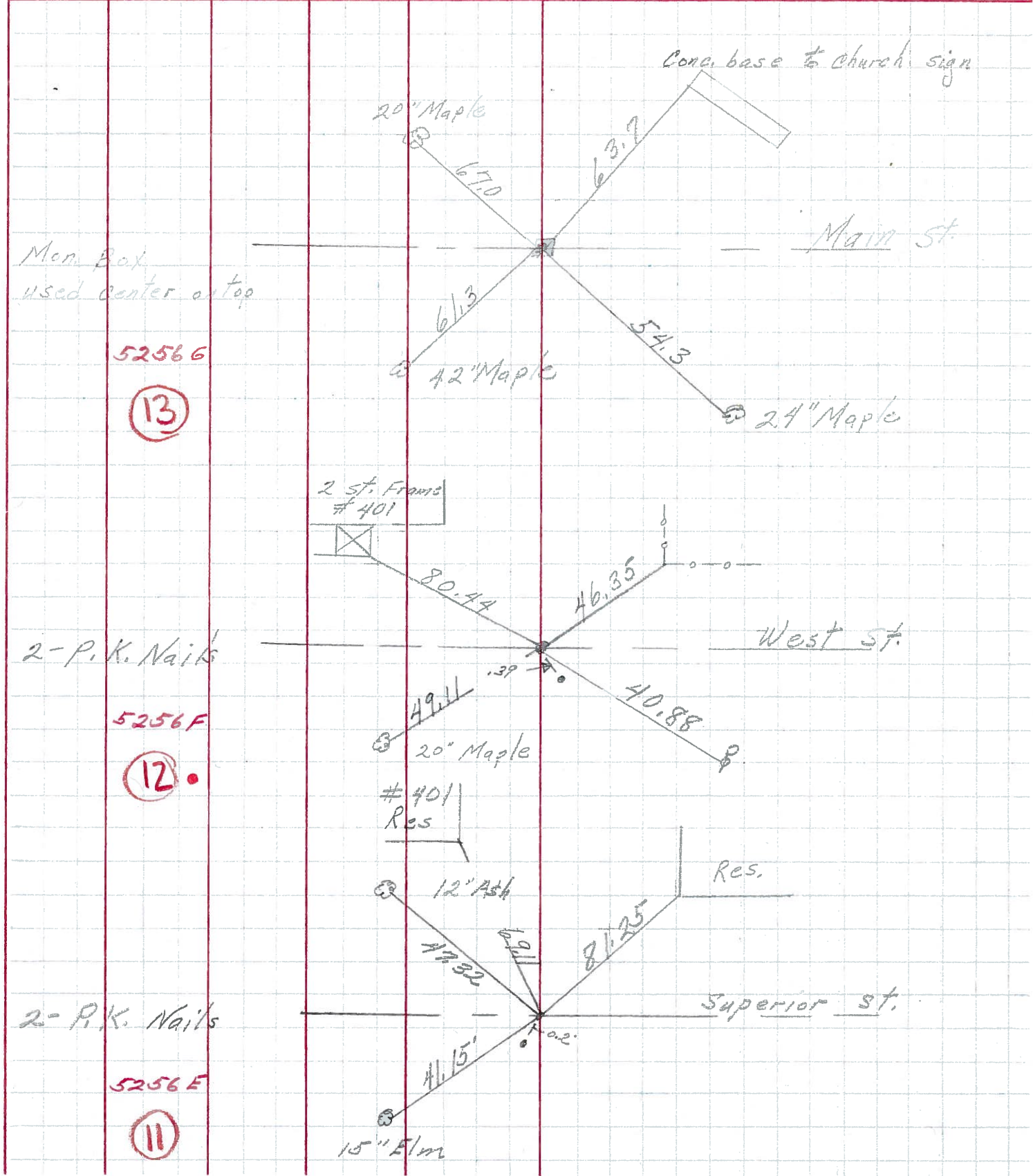
SEC. Genoa TEMP.

DESCRIPTION Clay Twp. LEFT CENTER LINE RIGHT JOB NO.



| | | | | | |
|-----------|-------|-----------|-------|------------|--------------|
| PERSONNEL | TITLE | PERSONNEL | TITLE | COUNTY | DATE |
| Schneider | | | | Ottawa | 3-13-70 |
| Mosser | | | | S. R. 163 | WEATHER Fair |
| Potts | | | | SEC. Genoa | TEMP. 30° |

DESCRIPTION Ties for Control Points JOB NO. _____



Mem. Box used center as top

52566

13

2-P.K. Nails

5256F

12

2-P.K. Nails

5256E

11