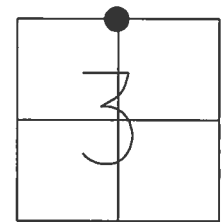


**O.D.O.T. DISTRICT 2 SURVEY OFFICE (USE ONLY)**

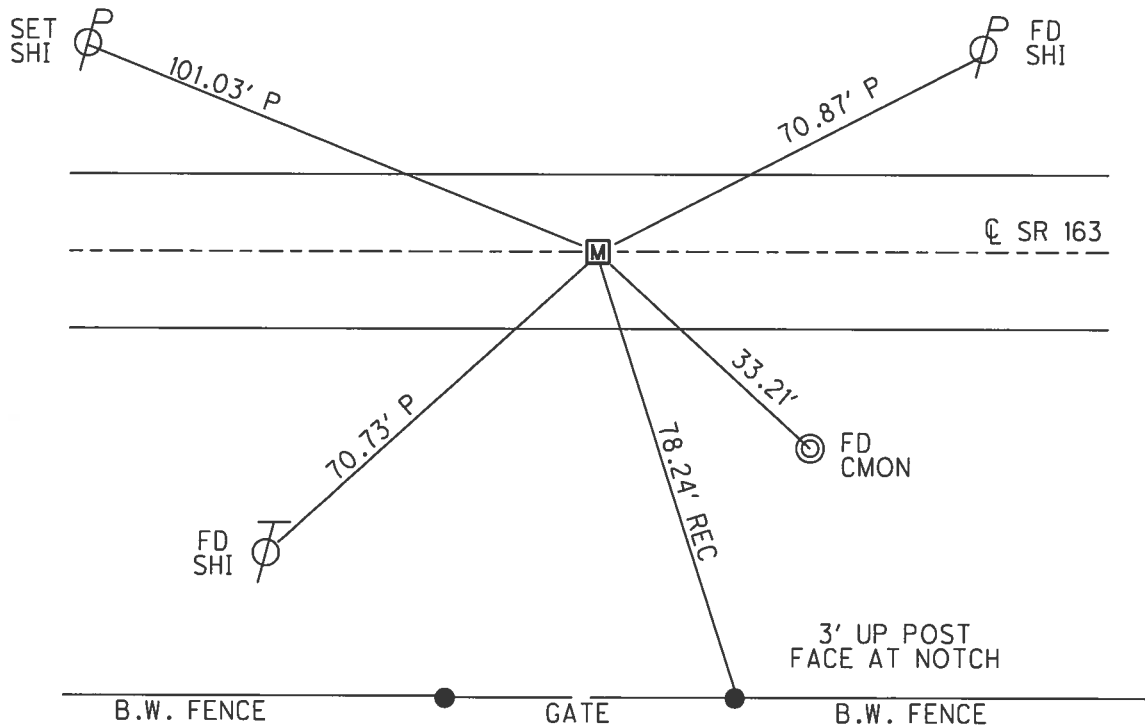
PERSONNEL	REFERENCE NO.	17	SHEET	23	OF	23
NOTES	RHOADES	DATE	11/22/16	ROUTE	SR 163	
H.C.	O'DONNELL	WEATHER	FAIR	COUNTY	OTTAWA	
R.C.	TODD	TEMP.	24°	TOWNSHIP	CLAY	
				SECTION	3	
				T. 6 N	R 13 E	

TYPE MONUMENT MONBOX W/ 1" IPIN IN IPIPE  
 ON SURFACE - ~~BELOW~~ ON \_\_\_\_\_  
 LEFT - ℄ PAV'T - RIGHT ON \_\_\_\_\_  
9.5' TO RT EDGE PAVEMENT  
 S.L.M. 179+78.58



GRID: NORTHING: 674759.589 EASTING: 1736008.115

RECORD:  
 FD MAG/WASHER  
 5/8/03, DCH  
 SET MAG/WASHER  
 3/1/03, DCH  
 FD MAG/WASHER  
 REF17  
 5/23/16, JFO  
 FD R.R. SPIKE  
 0.24' DOWN  
 FD 1" IPIN IN IPIPE  
 0.78' DOWN  
 SET ROUND MONBOX  
 11/22/16, JFO



# OTTAWA COUNTY ENGINEERS OFFICE

REFERENCE NO. 3-6-13-B  
NORTH QUARTER POST SEC. 3  
CLAY TWP.  
SHEET 1 OF 1.

ROUTE: STATE ROUTE #163

TOWNSHIP: CLAY

SECTION: 3

T 6 NR 13 E.

**PERSONNEL:**

- M. WITTMAN, P.S.
- J. ALLEN
- J. O'DONNELL, P.S. - ODOT
- D. TODD - ODOT
- J. RHOADES - ODOT

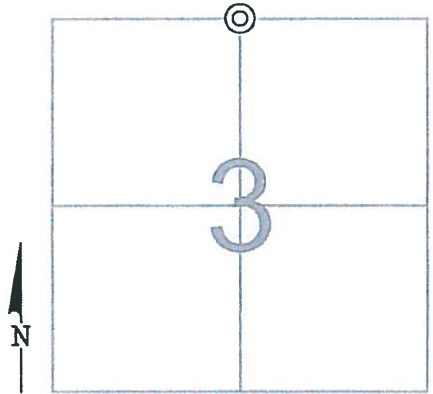
NORTHING:

EASTING:

**DATE / WEATHER / TEMP:**

NOVEMBER 22, 2016  
SUNNY  
30° F

DATUM:



MONUMENT INFORMATION

MONUMENT TYPE: 1" Ø IRON PIN IN 2" Ø IRON PIPE  
ON SURFACE - BELOW: 0.78'  
LEFT - CL PAV'T - RIGHT:  
  
IRON PIPE WAS IN HARD CONCRETE LIKE SURFACE.

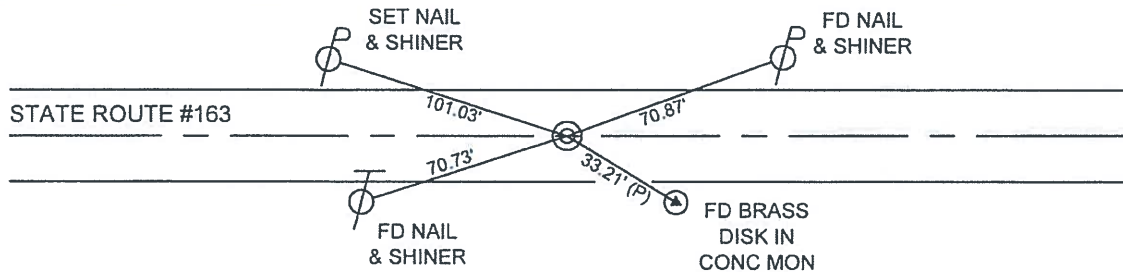


MISC. INFORMATION

FD PK NAIL AND SHINER ON SURFACE, TIED WITH GPS AND DUG FOR STONE. FOUND RR SPIKE 0.24' BELOW SURFACE 0.07' SOUTH AND 0.07' EAST OF SURFACE NAIL. FOUND IRON PIN IN PIPE 0.78' BELOW SURFACE 0.06' SOUTH AND 0.03' EAST OF SURFACE NAIL. SET ROUND ODOT MON BOX OVER PIN.

NOVEMBER 22, 2016

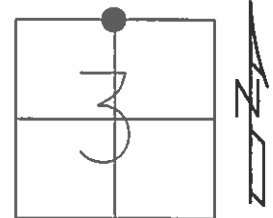
SET ROUND ODOT MONUMENT  
BOX OVER IRON PIN IN IRON PIPE



O.D.O.T. DISTRICT 2 SURVEY OFFICE (USE ONLY)

PERSONNEL \_\_\_\_\_ REFERENCE NO. 17 SHEET 23 OF 23  
 NOTES BEAUMONT DATE 5/8/03 ROUTE SR 163  
 H.C. HOMAN WEATHER SUNNY COUNTY OTTAWA  
 R.C. GLASS TEMP. 51° TOWNSHIP CLAY  
 SECTION 3  
 T 6 N R 13 E

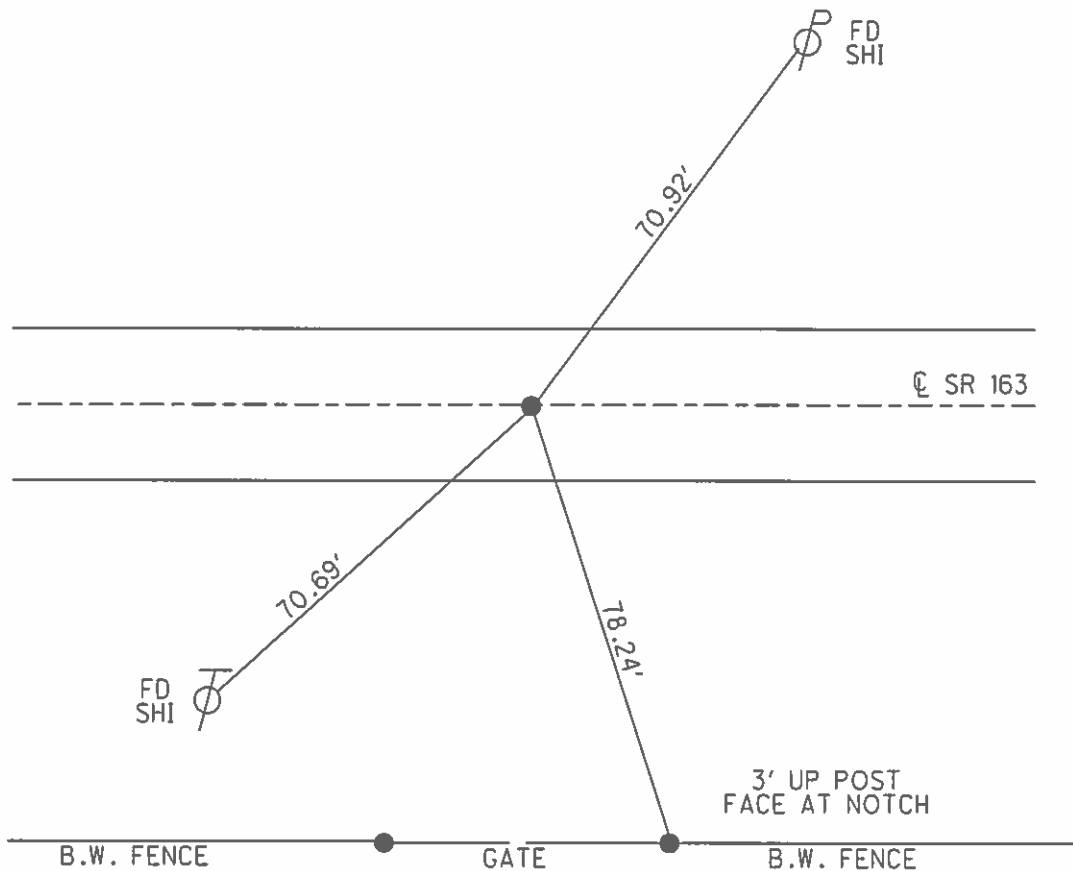
TYPE MONUMENT MAG/WASHER  
 ON SURFACE - ~~BELOW~~ ON  
 LEFT - ☉ PAV'T - RIGHT ON  
9.5' TO RT EDGE PAVEMENT  
 S.L.M. 180+18



GRID: NORTHING: \_\_\_\_\_ EASTING: \_\_\_\_\_

RECORD:  
 SET MAG/WASHER  
 3-1-04, DCH

NOTE:  
 1/4 POST OF  
 SEC 3 & 34



O.D.O.T. DISTRICT 2 SURVEY OFFICE

PERSONNEL

REFERENCE NO. 17

SHEET 17 OF 18

NOTES Ripple

H.C. Cheney

DATE 11/04/91

ROUTE SR#163

R.C. Geyman

WEATHER Cloudy

COUNTY OTTAWA

TEMP. 29°

TOWNSHIP CLAY

SECTION 34E3

T. 6 N. R. 13 E

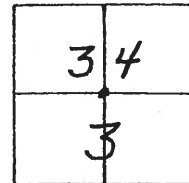
TYPE MONUMENT Set P.K. Nail Washer

ON SURFACE - ~~BELOW IRON PIN 6" DOWN~~ Yes

LEFT - & PAV'T. - RIGHT YES

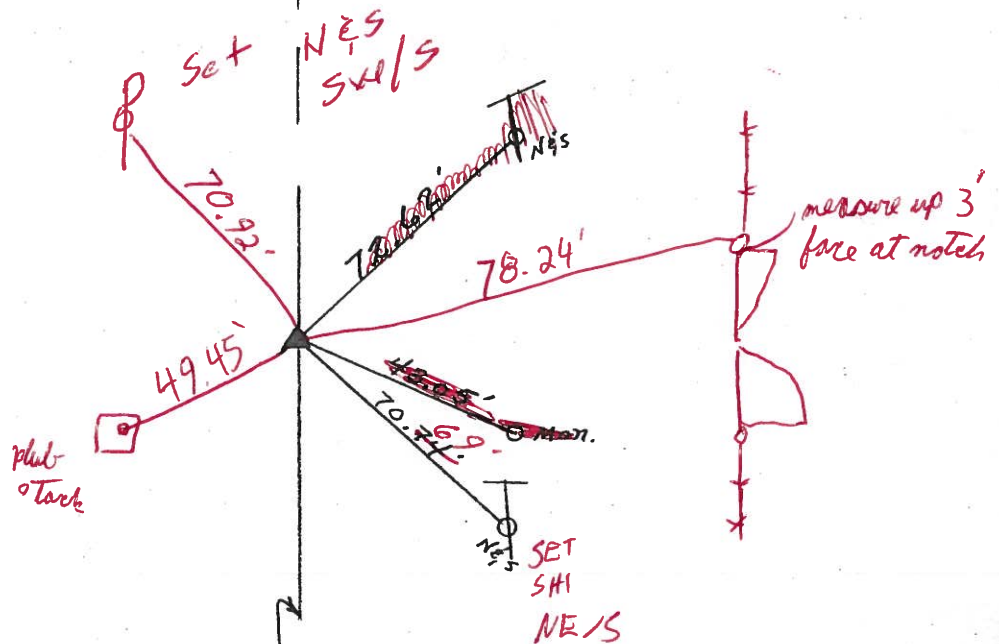
9.5' TO RT. EDGE PAVEMENT

S.L.M. 180+18 4 Post Sec. 34E3



Record:  
Sta 179+95.60  
Fd. I. Pin.

Record: 7-3-90 surd  
Fd. I. Pin 8" Below  
Ref same, then set  
R.P. ON SURFACE.



5/8/03

Beaumont = notes 51°

Bloman HC

Blas RC

Survey SR#163

O.D.O.T. DISTRICT 2 SURVEY OFFICE

PERSONNEL

REFERENCE NO. 17

SHEET 17 OF 18

NOTES Ripple

H.C. Cheney

R.C. Geyman

DATE 11/04/91

WEATHER Cloudy

TEMP. 29°

ROUTE SR#163

COUNTY OTTAWA

TOWNSHIP CLAY

SECTION 34E3

T. 6 N. R. 13 E

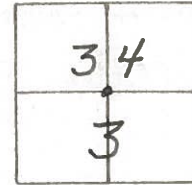
TYPE MONUMENT SET P.K. NAIL WASHER

ON SURFACE - BELOW IRON PIN 6" DOWN

LEFT - & PAV'T. - RIGHT \_\_\_\_\_

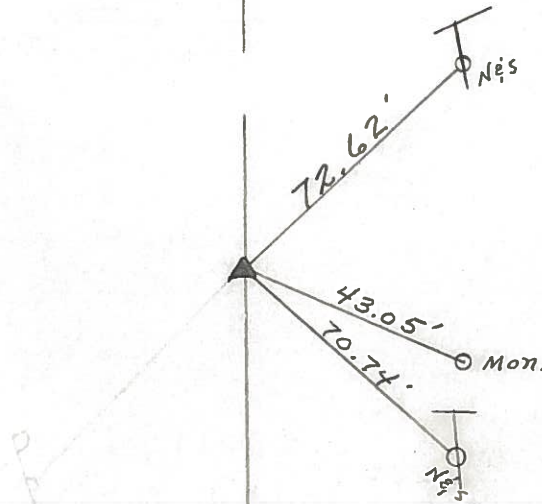
9.5' TO RT. EDGE PAVEMENT

S.L.M. 180+18 1/4 Post Sec. 34E3



Record:  
Sta 179+95.60  
Fd. I. Pin.

Record: 7-3-90 swd  
Fd. I. Pin 8" Below  
Ref same, then set  
R.R. on surface.



Survey SR#163

O.D.O.T. DISTRICT 2 SURVEY OFFICE

PERSONNEL

REFERENCE NO. 17

SHEET      OF     

NOTES HOFFMAN

H.C. "

DATE 7-3-90

ROUTE SR 163

R.C. BARNHISEL

WEATHER CLEAR

COUNTY OTTAWA

TEMP. 85°

TOWNSHIP CLAY

SECTION 3

T6 N R13 E

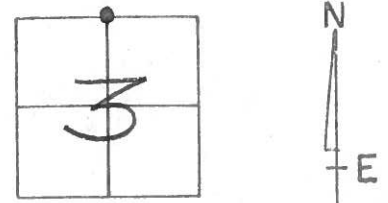
TYPE MONUMENT R.R. SPIKE / center PUNCH HOLE

ON SURFACE - ~~BELOW~~ yes

~~LEFT~~ & PAV'T. - ~~RIGHT~~ yes

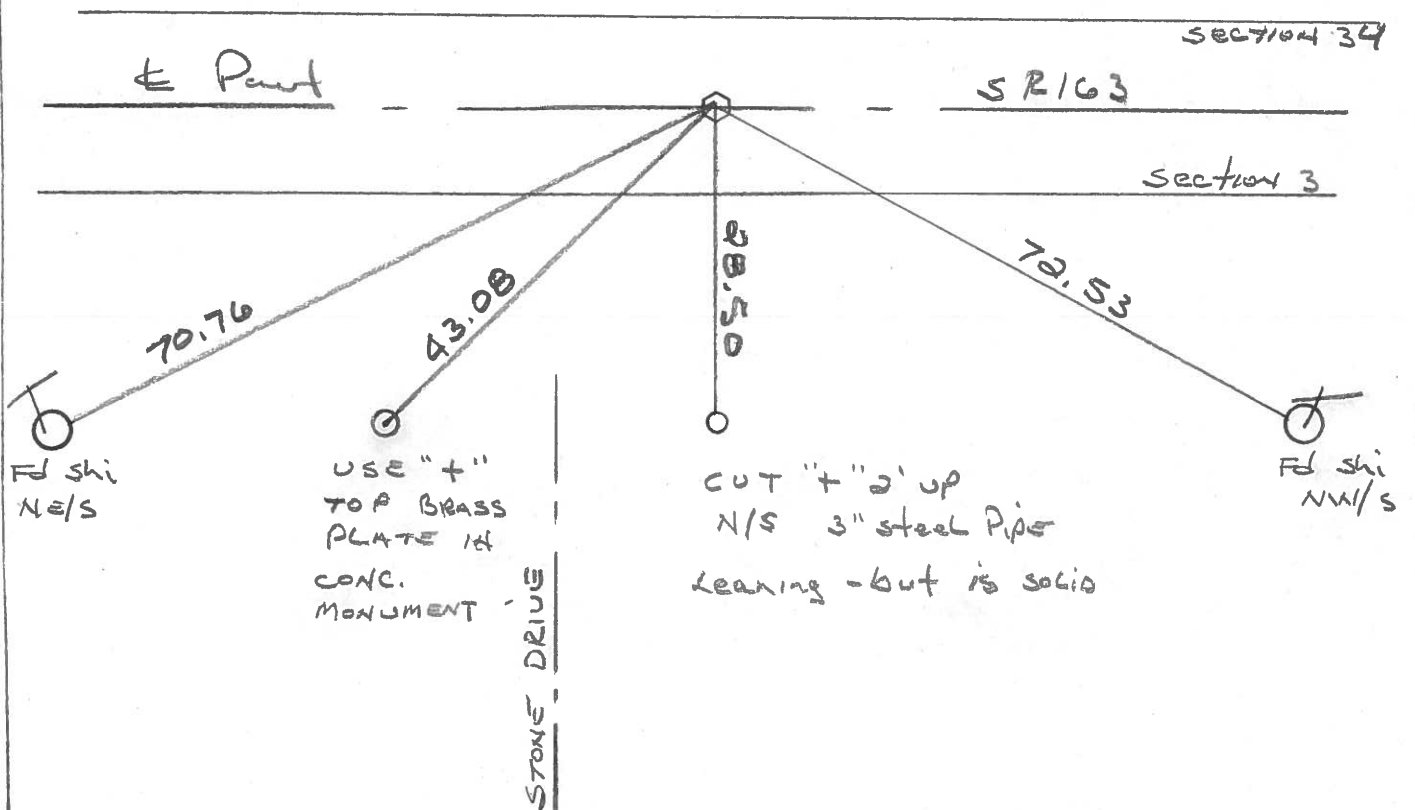
10.8 TO RT. EDGE PAVEMENT

S.L.M.     



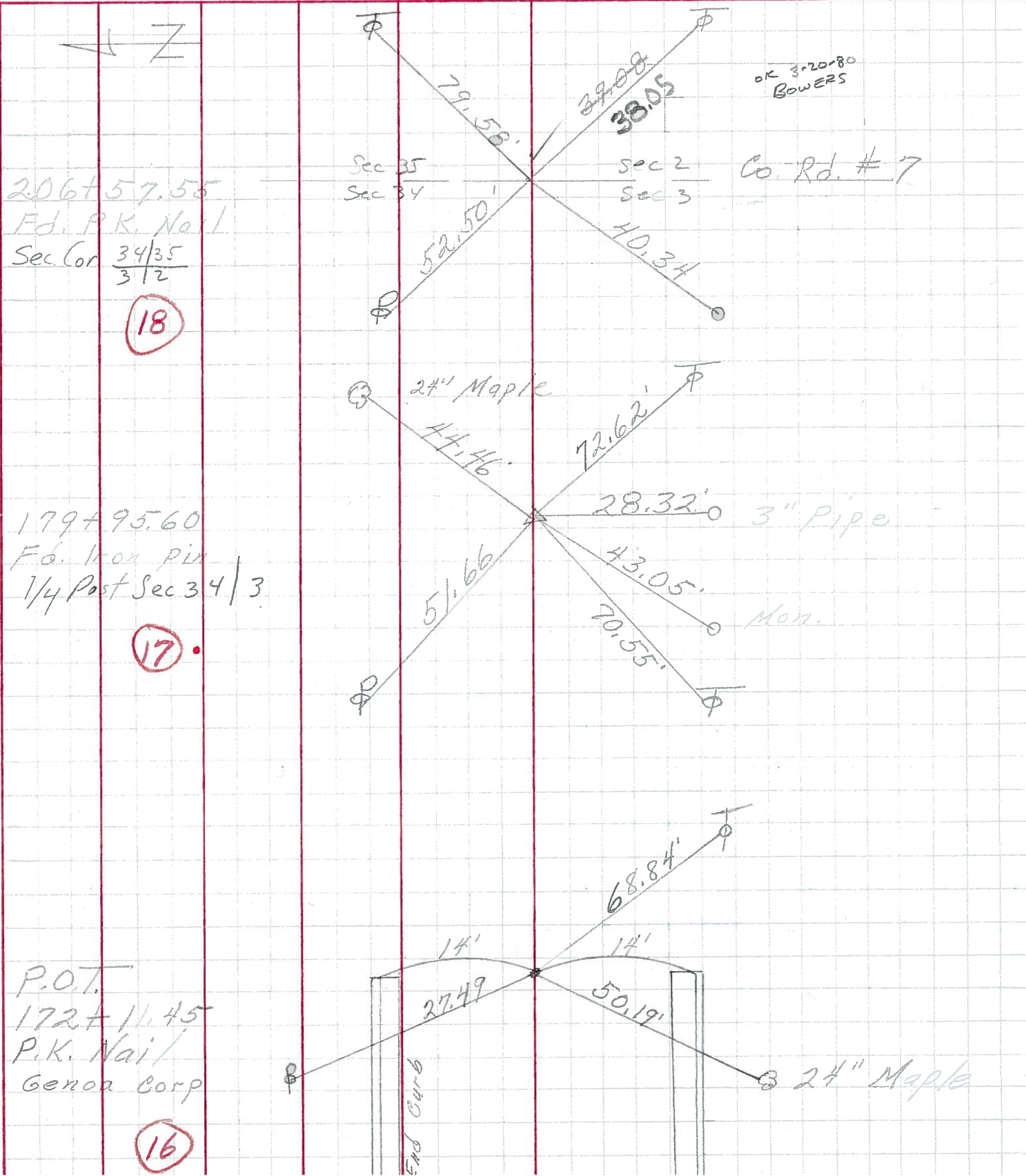
RECORD:  
Sta 179+95.60  
Fd. IRON PIN

This date: FOUND IRON PIN 8" below surface.  
Set Reference Nails AND set  
R.R. SPIKE TO SURFACE. SWD



PERSONNEL	TITLE	PERSONNEL	TITLE	COUNTY	DATE
				<u>Ottawa</u>	<u>9-70</u>
				S. R. <u>163</u>	WEATHER
				SEC. <u>34 &amp; 3</u>	TEMP.

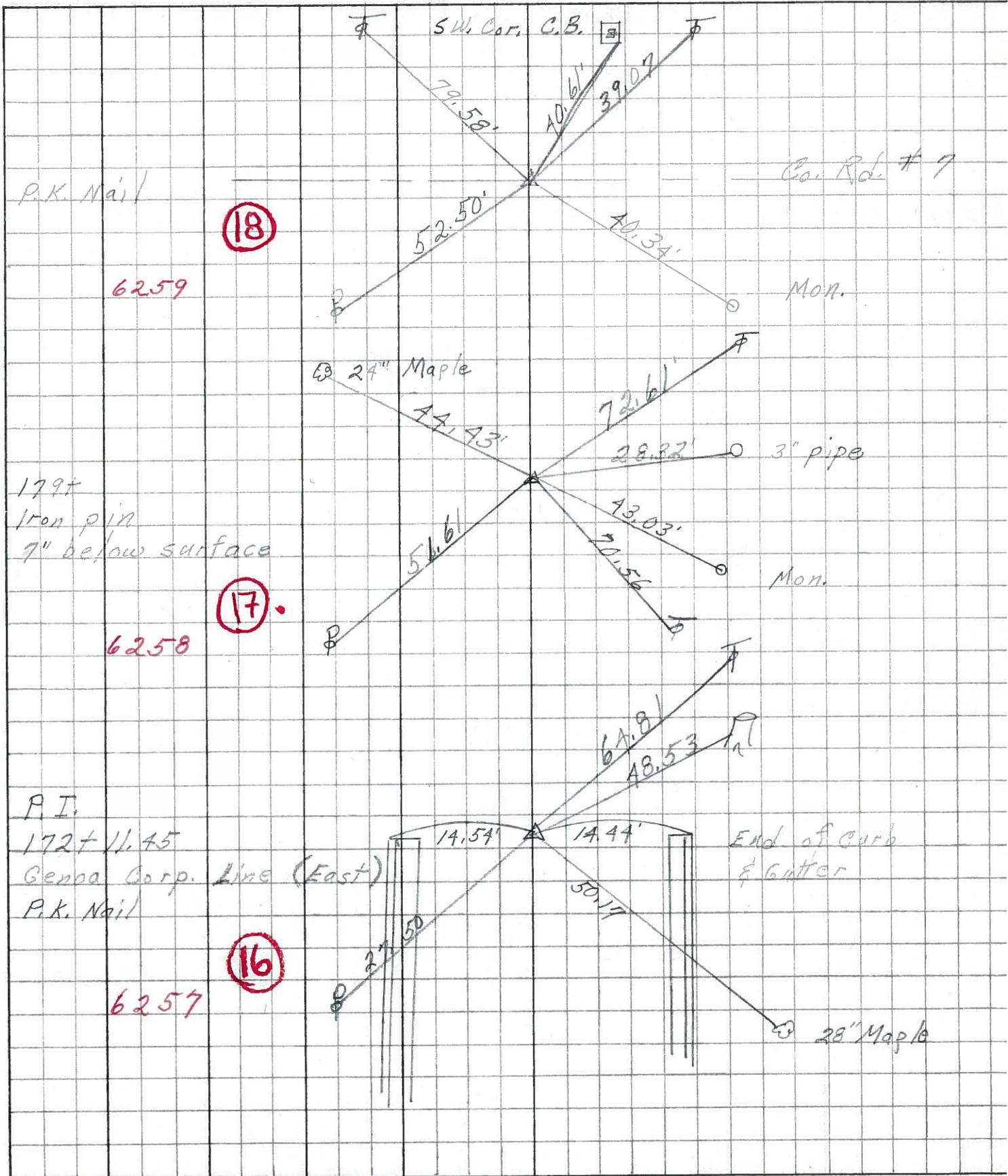
DESCRIPTION Clay Twp. LEFT CENTER LINE RIGHT JOB NO.



PERSONNEL	TITLE	PERSONNEL	TITLE
Schneider			
Mosser			
Barbour			
Potts			

COUNTY Ottawa DATE 7-8-68  
 S. R. 163 WEATHER Fair  
 SEC. Wood Co. Line to Oak Harbor TEMP. 90°

DESCRIPTION Ties for Control Points JOB NO. \_\_\_\_\_





PERSONNEL TITLE PERSONNEL TITLE

Schneider

Mosser

Barbour

Potts

COUNTY Ottawa

DATE Jan. 67

S. R. 163

WEATHER

SEC. 3.24

TEMP.

DESCRIPTION Control Points

JOB NO.

LEFT

CENTER LINE

RIGHT

