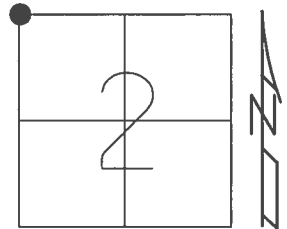


O.D.O.T. DISTRICT 2 SURVEY OFFICE (USE ONLY)

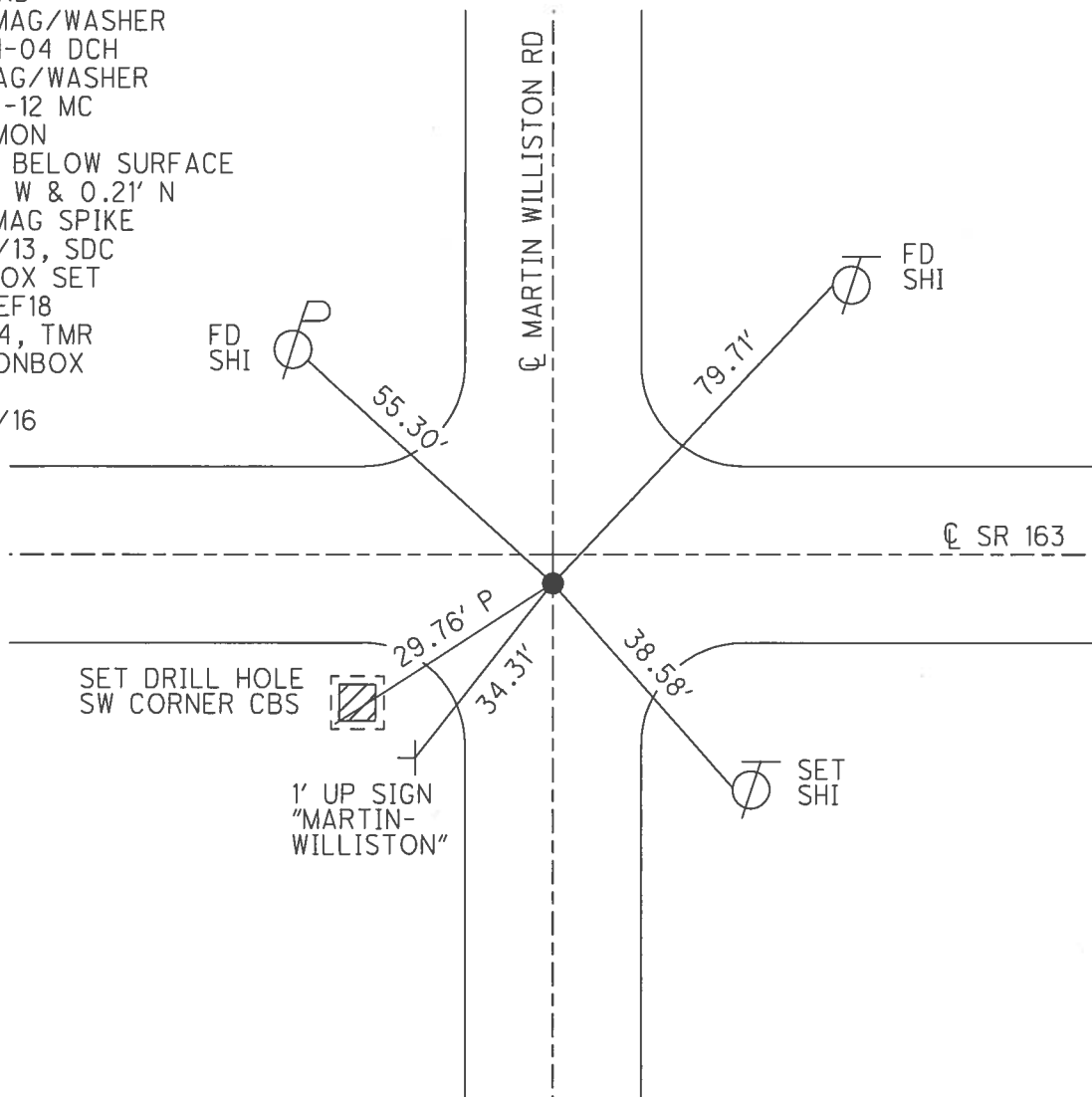
PERSONNEL	REFERENCE NO. <u>18</u>	SHEET <u>1</u> OF <u>20</u>
NOTES <u>RHOADES</u>	DATE <u>04-29-2013</u>	ROUTE <u>SR 163</u>
H.C. <u>CODER</u>	WEATHER <u>CLOUDY</u>	COUNTY <u>OTTAWA</u>
R.C. <u>LAU</u>	TEMP. <u>57° F</u>	TOWNSHIP <u>CLAY</u>
		SECTION <u>2</u>
		T <u>6</u> N R <u>13</u> E

TYPE MONUMENT MAG & WASHER
 ON SURFACE - ~~BELOW~~ ON
~~LEFT~~ - Q PAV'T - RIGHT 1'
8.5' TO RT. EDGE PAVEMENT
 S.L.M. 206+89



Grid: Northing: 674771.021 Easting: 1738669.785

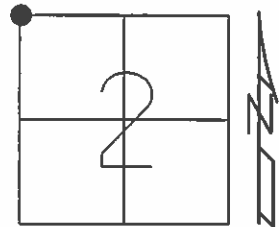
RECORD:
 SET MAG/WASHER
 03-01-04 DCH
 FD MAG/WASHER
 01-03-12 MC
 FD CMON
 0.76' BELOW SURFACE
 0.05' W & 0.21' N
 SET MAG SPIKE
 4/29/13, SDC
 MONBOX SET
 NEWREF18
 5/1/14, TMR
 FD MONBOX
 REF18
 5/23/16



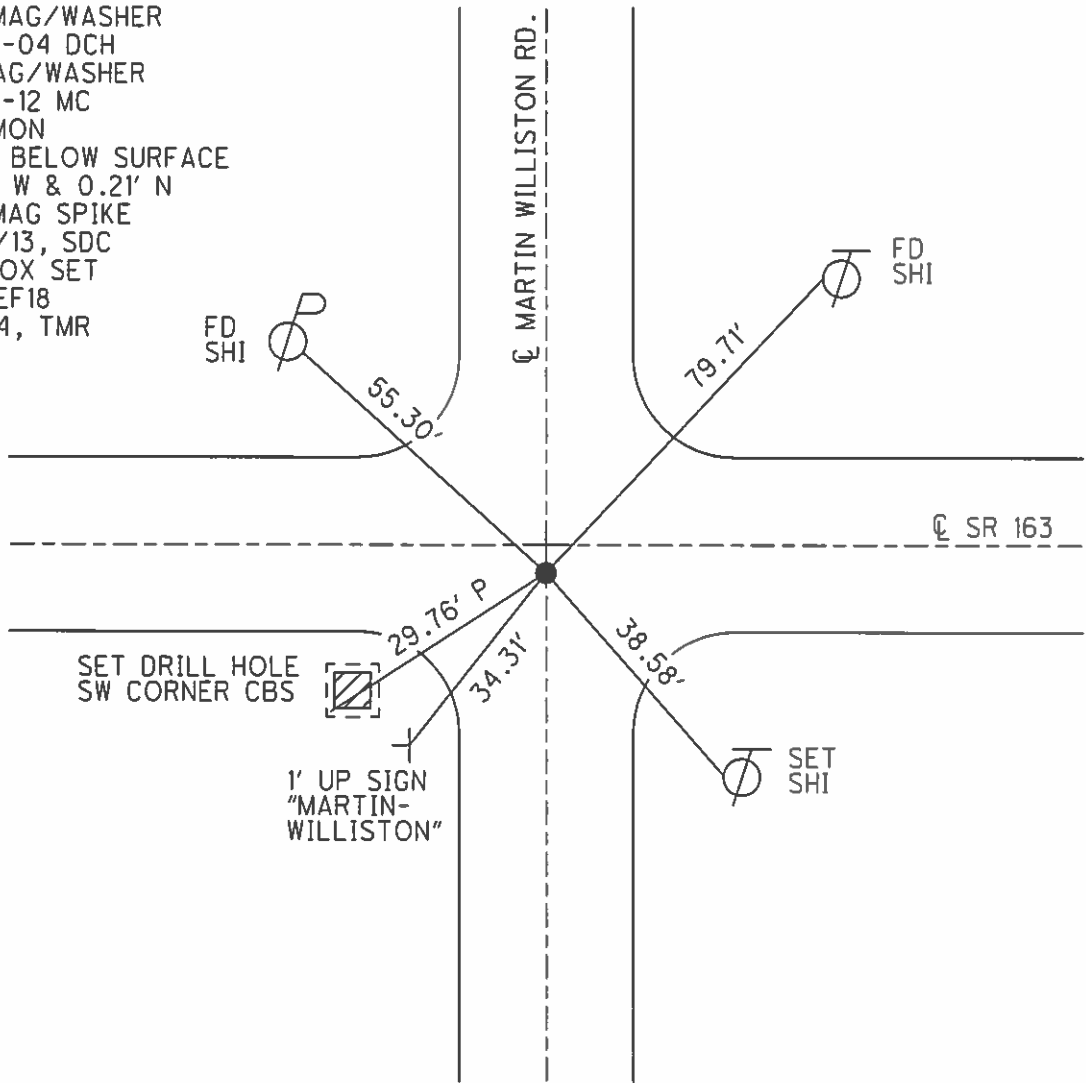
O.D.O.T. DISTRICT 2 SURVEY OFFICE (USE ONLY)

PERSONNEL _____ REFERENCE NO. 18 SHEET 1 OF 20
 NOTES RHOADES DATE 04-29-2013 ROUTE SR 163
 H.C. CODER WEATHER CLOUDY COUNTY OTTAWA
 R.C. LAU TEMP. 57° F TOWNSHIP CLAY
 _____ SECTION 2
 _____ T 6 N R 13 E

TYPE MONUMENT MAG & WASHER
 ON SURFACE - ~~BELOW~~ ON _____
~~LEFT~~ - Q PAV'T - RIGHT 1'
8.5' TO RT. EDGE PAVEMENT
 S.L.M. 206+89
 Grid: Northing: 674770.975 Easting: 1738669.806



RECORD:
 SET MAG/WASHER
 03-01-04 DCH
 FD MAG/WASHER
 01-03-12 MC
 FD CMON
 0.76' BELOW SURFACE
 0.05' W & 0.21' N
 SET MAG SPIKE
 4/29/13, SDC
 MONBOX SET
 NEWREF18
 5/1/14, TMR



O.D.O.T. DISTRICT 2 SURVEY OFFICE

PERSONNEL _____

REFERENCE NO. 18

SHEET 5 OF 12

NOTES Beaumont

DATE 05/08/03

ROUTE SR 163

H.C. Homan

WEATHER Sunny

COUNTY Ottawa

R.C. Glass

TEMP. 51°

TOWNSHIP Clay

SECTION 34,35,3,2

T 6 N R 13 E

TYPE MONUMENT Mag & Washer

~~ON SURFACE~~ - **BELOW** ~~on surface 7" down~~

LEFT - Q PAV'T - RIGHT 1' RT

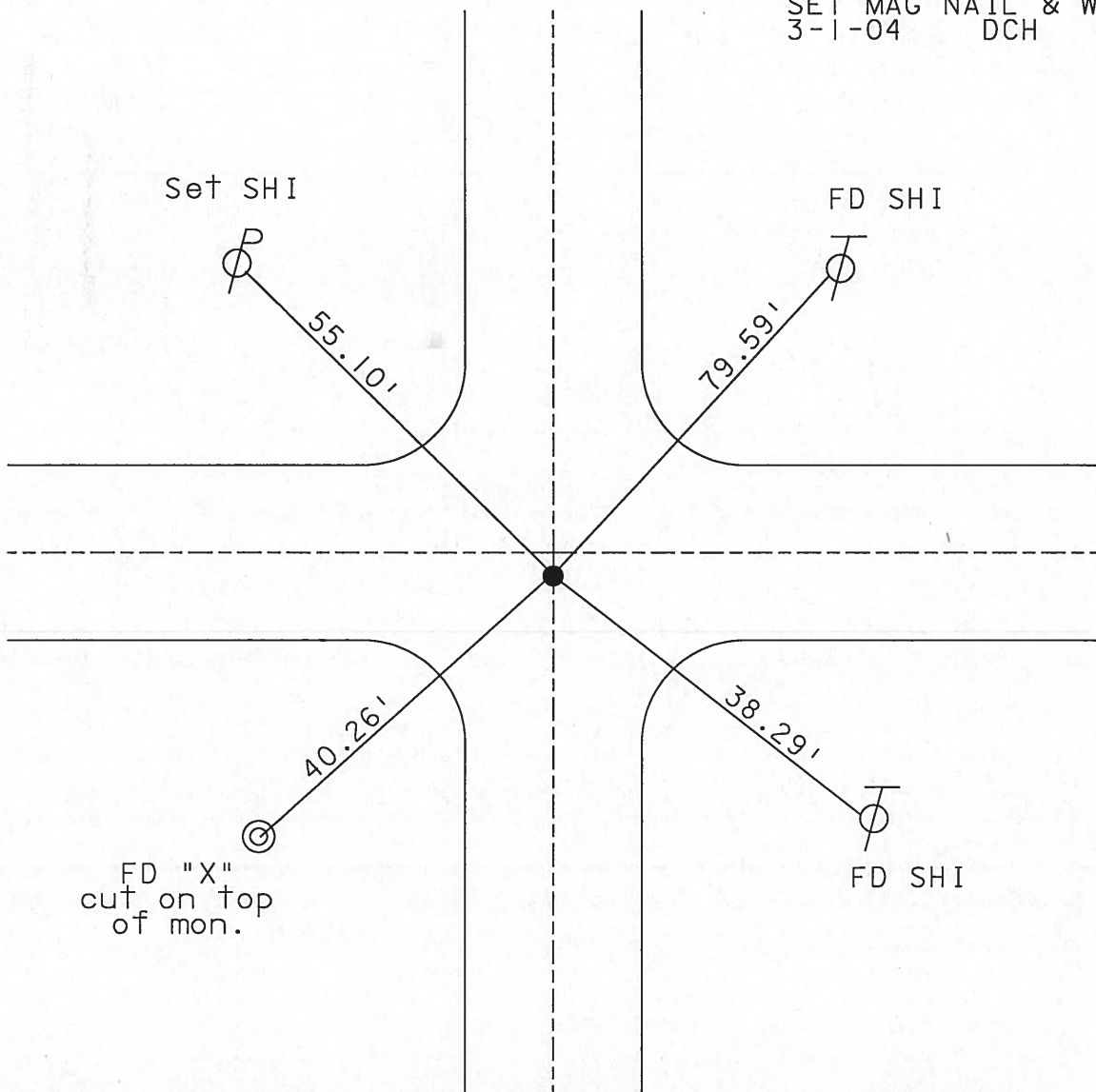
8.5' TO RT EDGE PAVEMENT

S.L.M. 206+89

34	35
3	2



SET MAG NAIL & WASHER
3-1-04 DCH



O.D.O.T. DISTRICT 2 SURVEY OFFICE

PERSONNEL

REFERENCE NO. 18

SHEET 18 OF 18

NOTES Ripple

H.C. Cheney

R.C. Geyman

DATE 11/04/91

WEATHER Cloudy

TEMP. 29°

ROUTE S.R. #163

COUNTY OTTAWA

TOWNSHIP Clay

SECTION 34, 35, 3, & 2

T 6 N R 13 E

TYPE MONUMENT Set P.K. Nail & Washer
~~ON SURFACE - BELOW R.R. Spk. 32" down 7"~~

~~LEFT - & PAV'T. - RIGHT 1' RT.~~

8.5' TO RT. EDGE PAVEMENT

S.L.M. 206+89

34	35
3	2

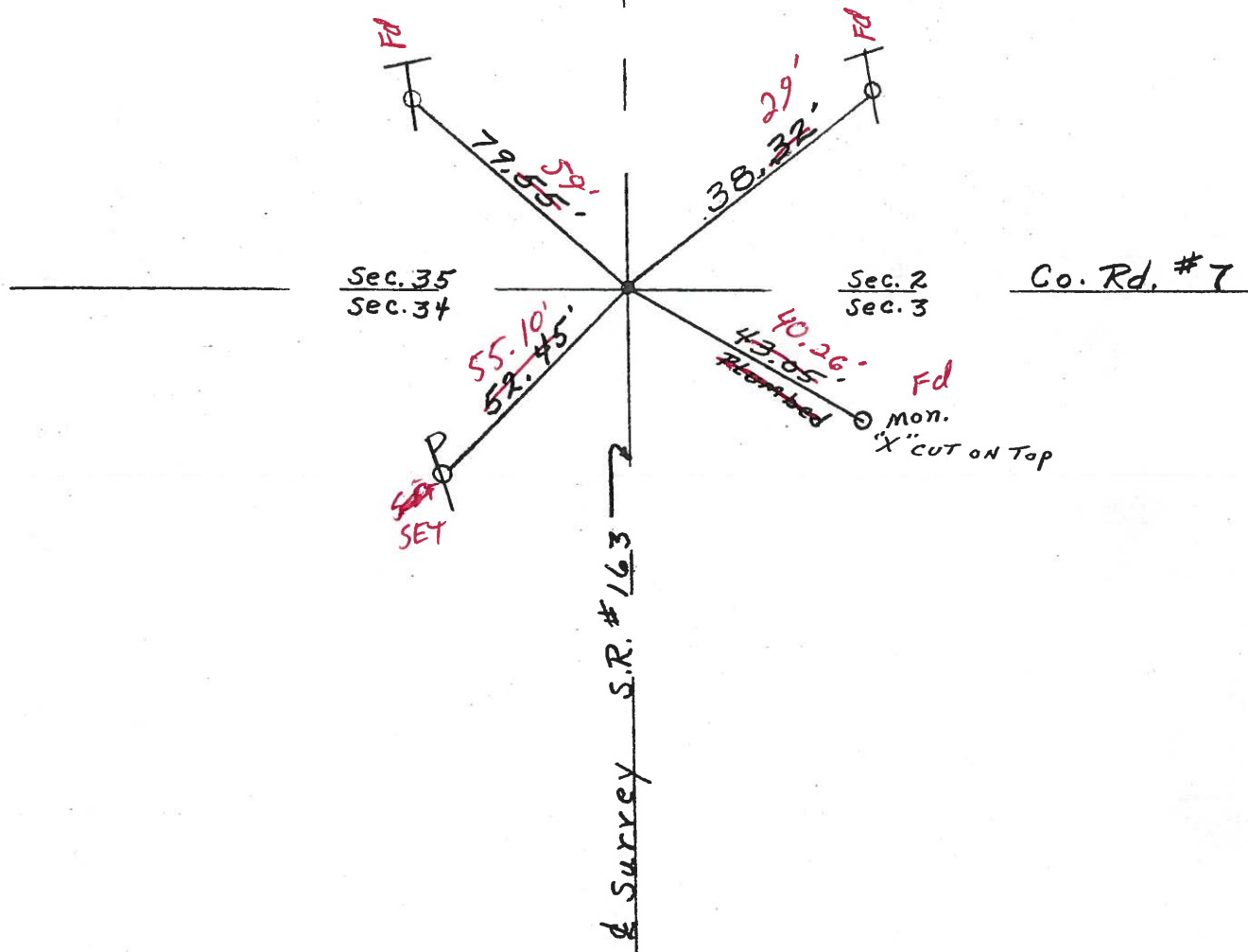


Record:
206+57.55

Baumont notes 5/8/03

Homon HE 51°

Das RC



O.D.O.T. DISTRICT 2 SURVEY OFFICE

PERSONNEL

REFERENCE NO. 18

SHEET 18 OF 18

NOTES Ripple

H.C. Cheney

R.C. Geyman

DATE 11/04/91

WEATHER Cloudy

TEMP. 29°

ROUTE S.R. #163

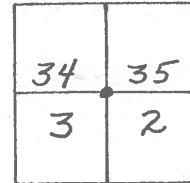
COUNTY OTTAWA

TOWNSHIP CLAY

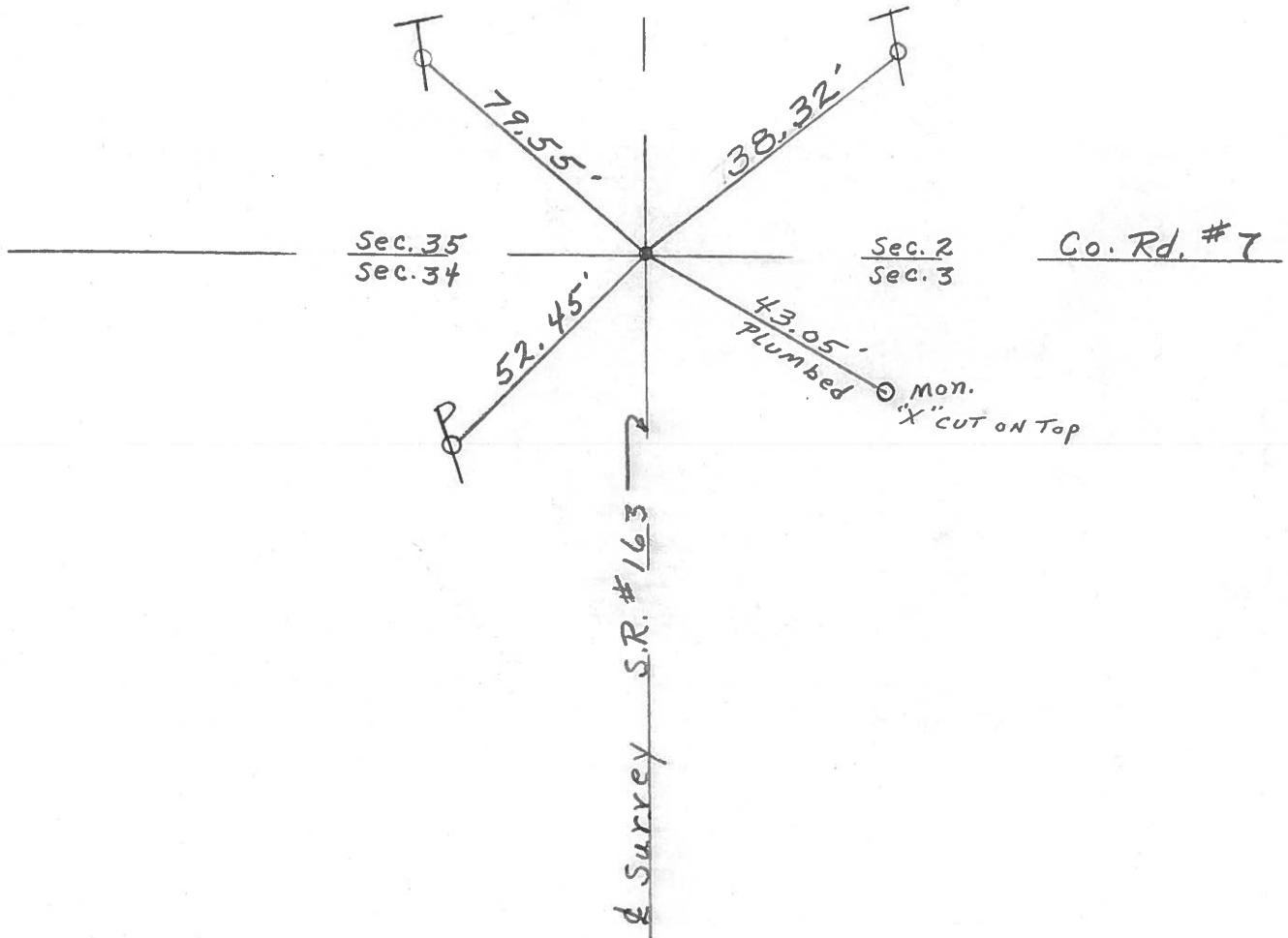
SECTION 34, 35, 3, & 2

T. 6 N R. 13 E

TYPE MONUMENT Set P.K. Nail & Washer
 ON SURFACE - BELOW R.R. Spk. 3 1/2" down
 LEFT - & PAV'T. - RIGHT 1' RT.
8.5' TO RT. EDGE PAVEMENT
 S.L.M. 206+89



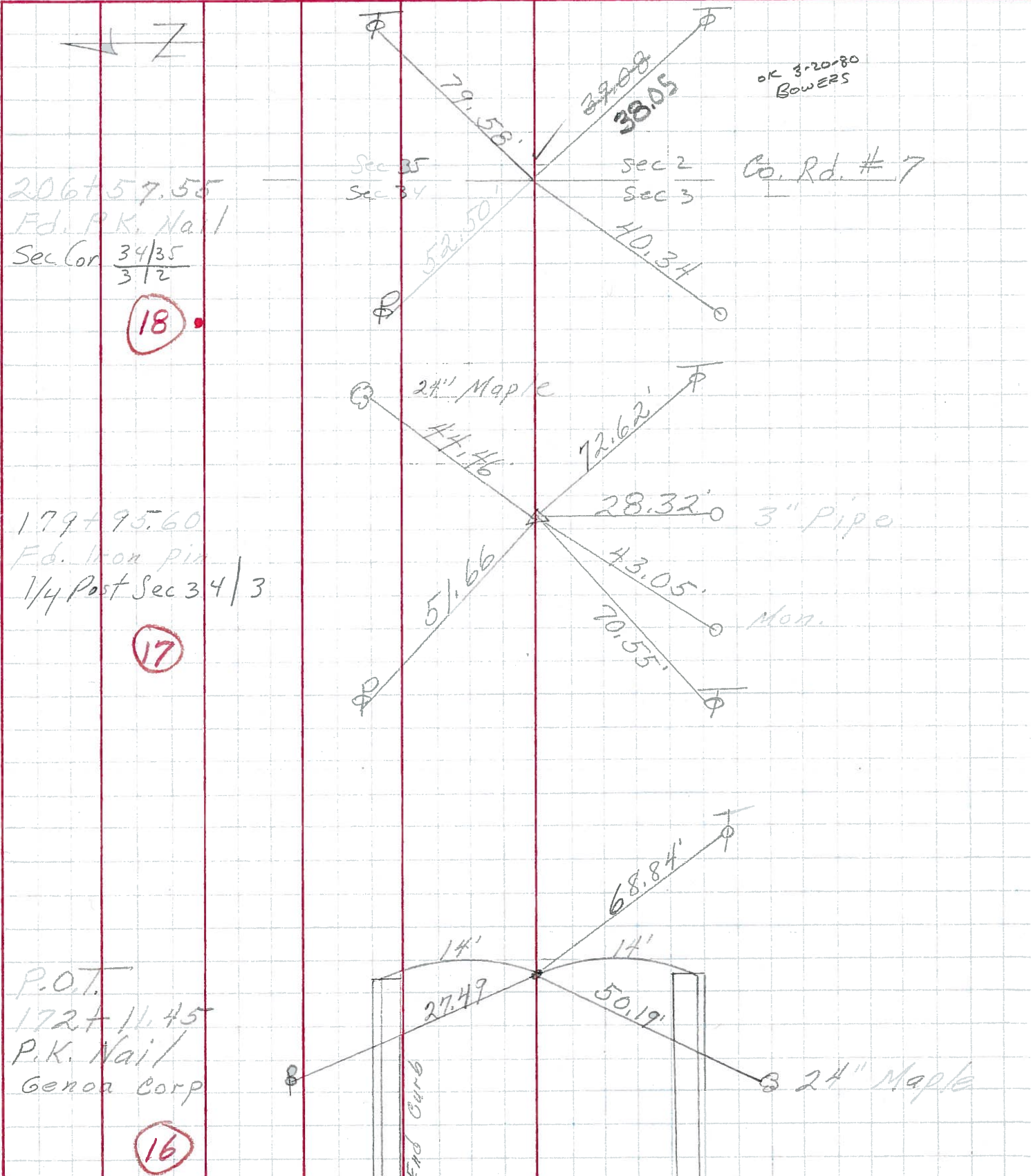
Record:
206+57.55



PERSONNEL	TITLE	PERSONNEL	TITLE

COUNTY Ottawa DATE 9-70
 S. R. 163 WEATHER
 SEC. 34 & 3 TEMP.

DESCRIPTION Clay Twp. LEFT CENTER LINE RIGHT JOB NO.



206+57.55
 Ed. P.K. Nail
 Sec Cor $\frac{34|35}{3|2}$
 (18)

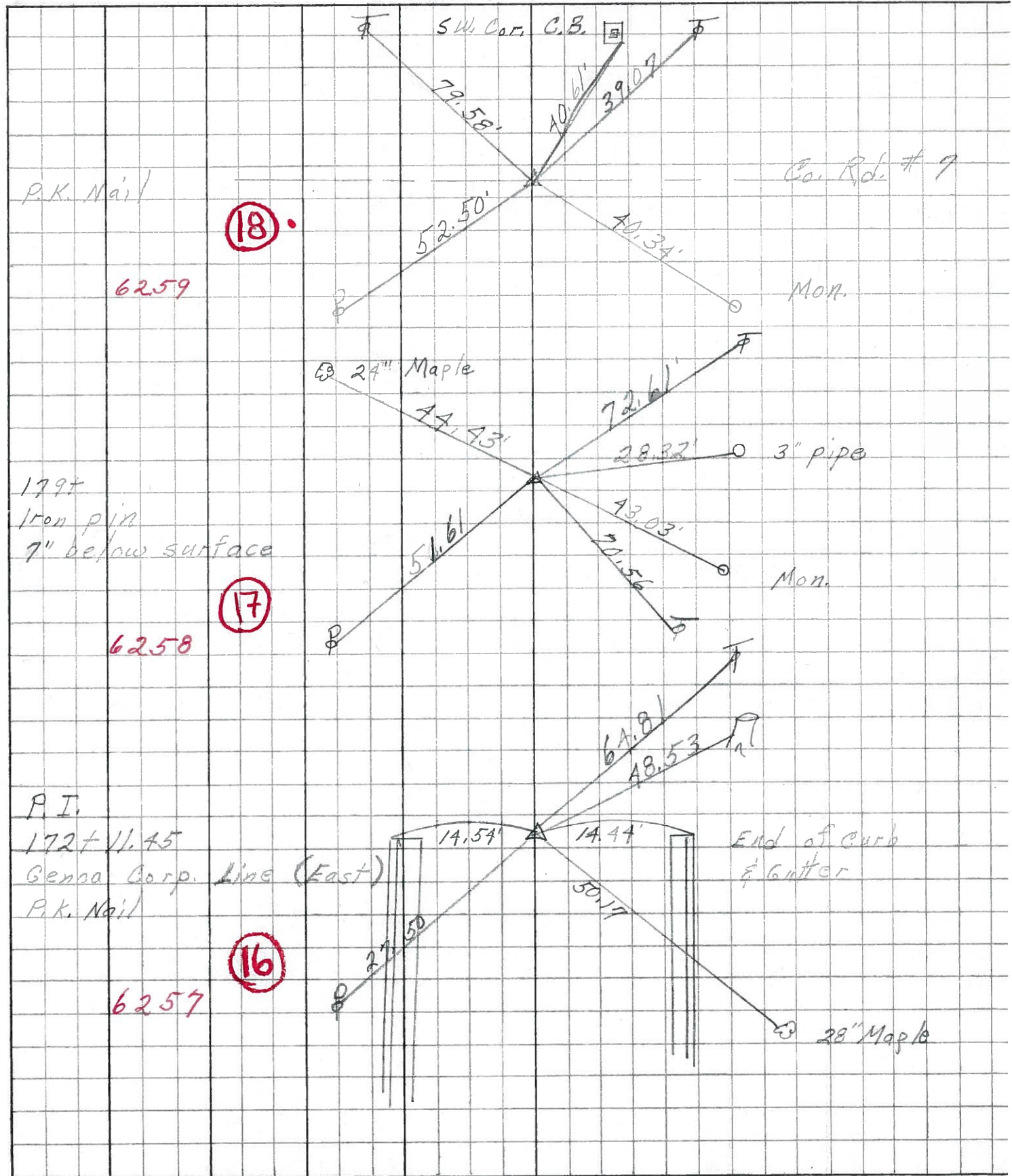
179+95.60
 Ed. Iron pin
 1/4 Post Sec 34|3
 (17)

P.O.T.
 172+11.45
 P.K. Nail
 Genoa Corp
 (16)

PERSONNEL	TITLE	PERSONNEL	TITLE
Schneider			
Mosser			
Barbour			
Potts			

COUNTY Ottawa DATE 7-8-68
 S. R. 163 WEATHER Fair
 SEC. Wood Co. Line to Oak Harbor TEMP. 90°

DESCRIPTION Ties for Control Points JOB NO. _____



PERSONNEL	TITLE	PERSONNEL	TITLE	COUNTY	DATE
<u>Schneider</u>				<u>Ottawa</u>	<u>Jan. 67</u>
<u>Mosser</u>				S. R.	
<u>Barbour</u>				<u>163</u>	WEATHER
<u>Potts</u>				SEC.	
				<u>3.24</u>	TEMP.

DESCRIPTION Control Points JOB NO. _____

