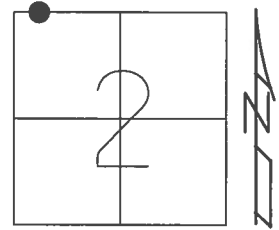


O.D.O.T. DISTRICT 2 SURVEY OFFICE (USE ONLY)

PERSONNEL _____ REFERENCE NO. 19 SHEET 2 OF 21

NOTES RHOADES DATE 4/5/16 ROUTE SR 163
 H.C. FARKAS WEATHER CLEAR COUNTY OTTAWA
 R.C. HOMAN TEMP. 26° TOWNSHIP CLAY
 SECTION 2
 T 6 N R 13 E

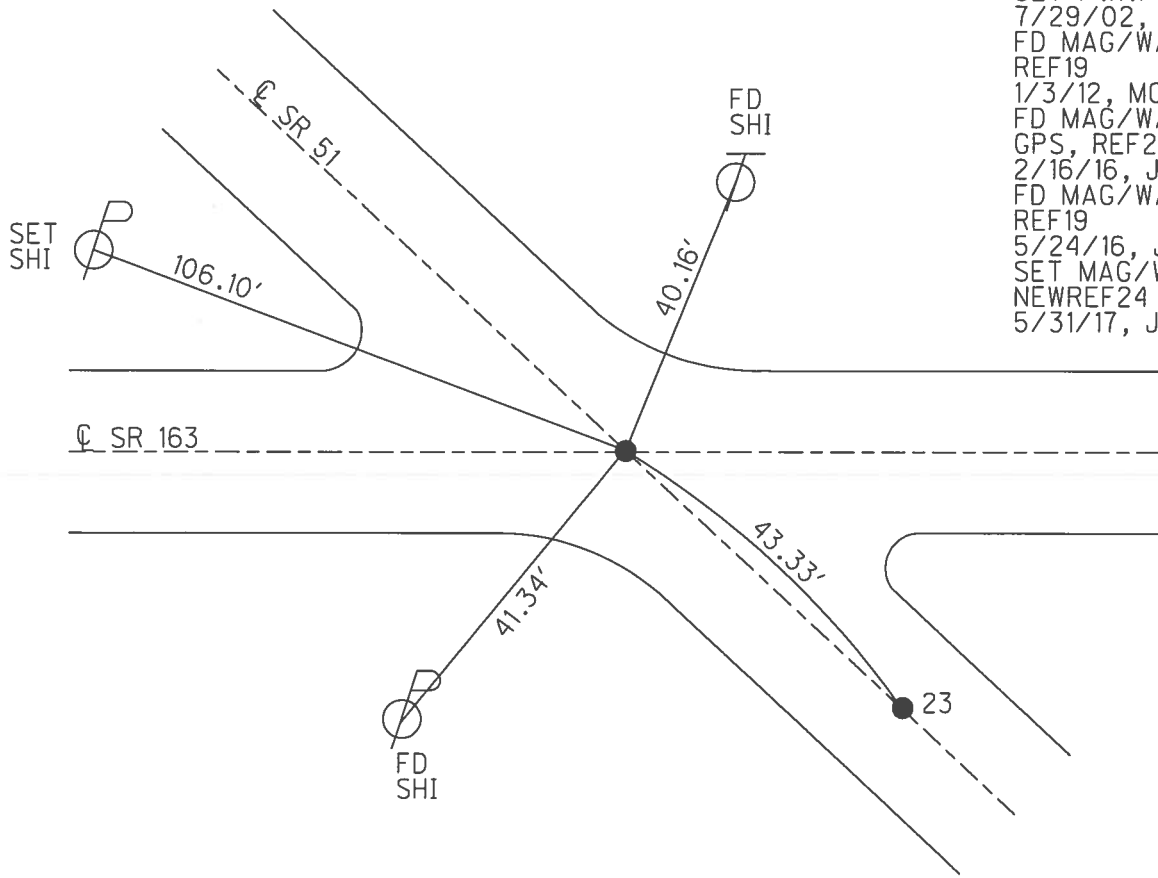
TYPE MONUMENT MAG/WASHER
 ON SURFACE - ~~BELOW~~ ON, ON CL WEST
 LEFT - CL PAV'T - RIGHT -
- TO - EDGE PAVEMENT
 S.L.M. 213+84



Grid: Northing: 674775.973 Easting: 1739397.544

NOTE:
 REF 24
 OTT SR 51

RECORD: P.I.
 $\Delta = 00^{\circ} 04' RT$
 297+16.7
 FD SM.R.R.SPIKE
 5/14/02, MB
 SET P.K./WASHER
 7/29/02, MB
 FD MAG/WASHER
 REF19
 1/3/12, MC
 FD MAG/WASHER
 GPS, REF24
 2/16/16, JFO
 FD MAG/WASHER
 REF19
 5/24/16, JFO
 SET MAG/WASHER
 NEWREF24
 5/31/17, JFO

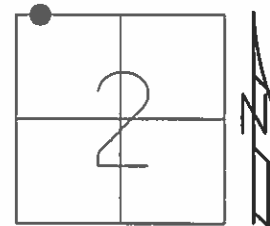


O.D.O.T. DISTRICT 2 SURVEY OFFICE (USE ONLY)

| | | | | | | |
|-----------|------------------|-----------|--------------------|--------------|---------------|-----------|
| PERSONNEL | REFERENCE NO. | <u>19</u> | SHEET | <u>2</u> | OF | <u>20</u> |
| NOTES | MOSER | DATE | <u>5/14/02</u> | ROUTE | <u>SR 51</u> | |
| H.C. | <u>BARNHISEL</u> | WEATHER | <u>PTLY CLOUDY</u> | COUNTY | <u>OTTAWA</u> | |
| R.C. | <u>LOEHRKE</u> | TEMP. | <u>55°</u> | TOWNSHIP | <u>CLAY</u> | |
| | <u>HOFFMAN</u> | | | SECTION | <u>2</u> | |
| | | | | T <u>6</u> N | R <u>13</u> E | |

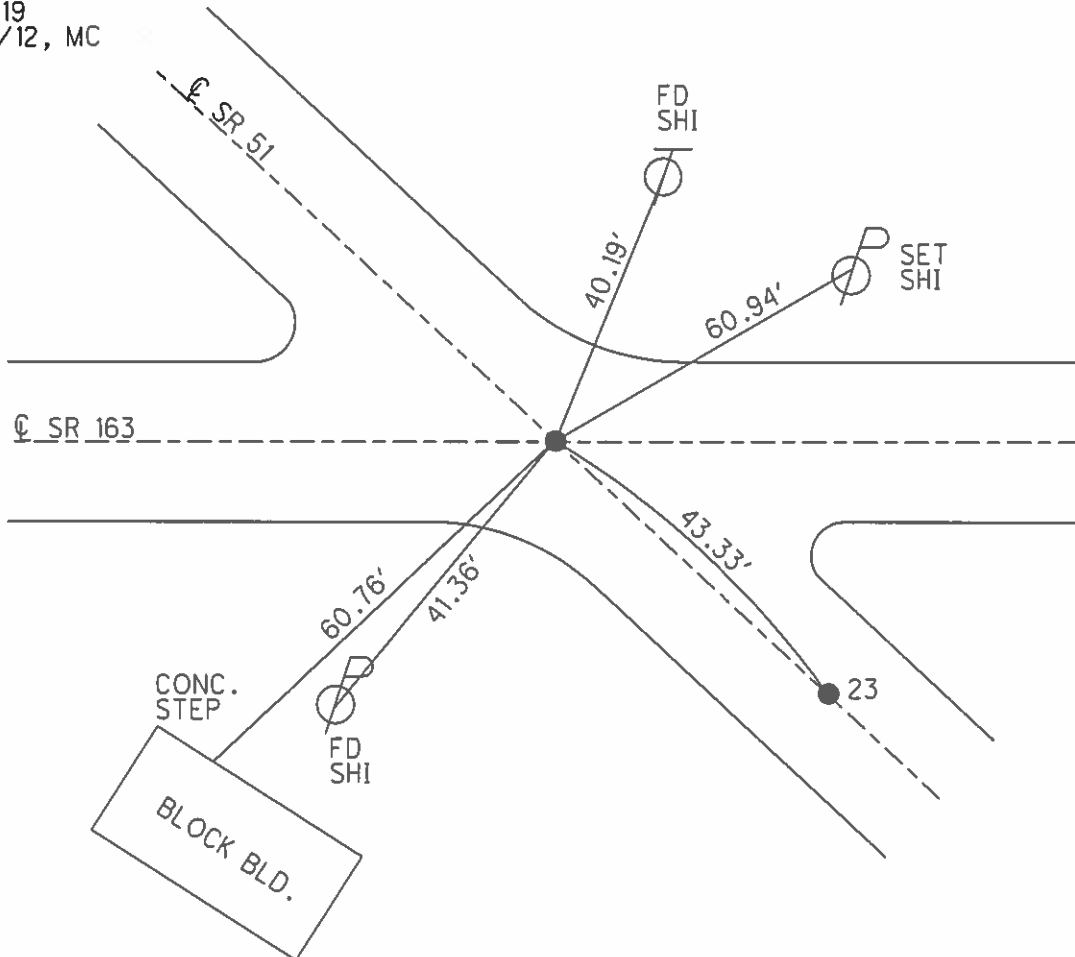
TYPE MONUMENT SM.R.R.SPIKE
 ON SURFACE - ~~BELOW~~ ON, ON C WEST
 LEFT - C PAV'T - RIGHT -
- TO - EDGE PAVEMENT
 S.L.M. 213+84

Grid: Northing: 674775.882 Easting: 1739397.310



RECORD:
 FD SM.R.R.SPIKE
 5/14/02, KM
 SET P.K./WASHER
 7/29/02, MB
 FD MAG/WASHER
 REF19
 1/3/12, MC

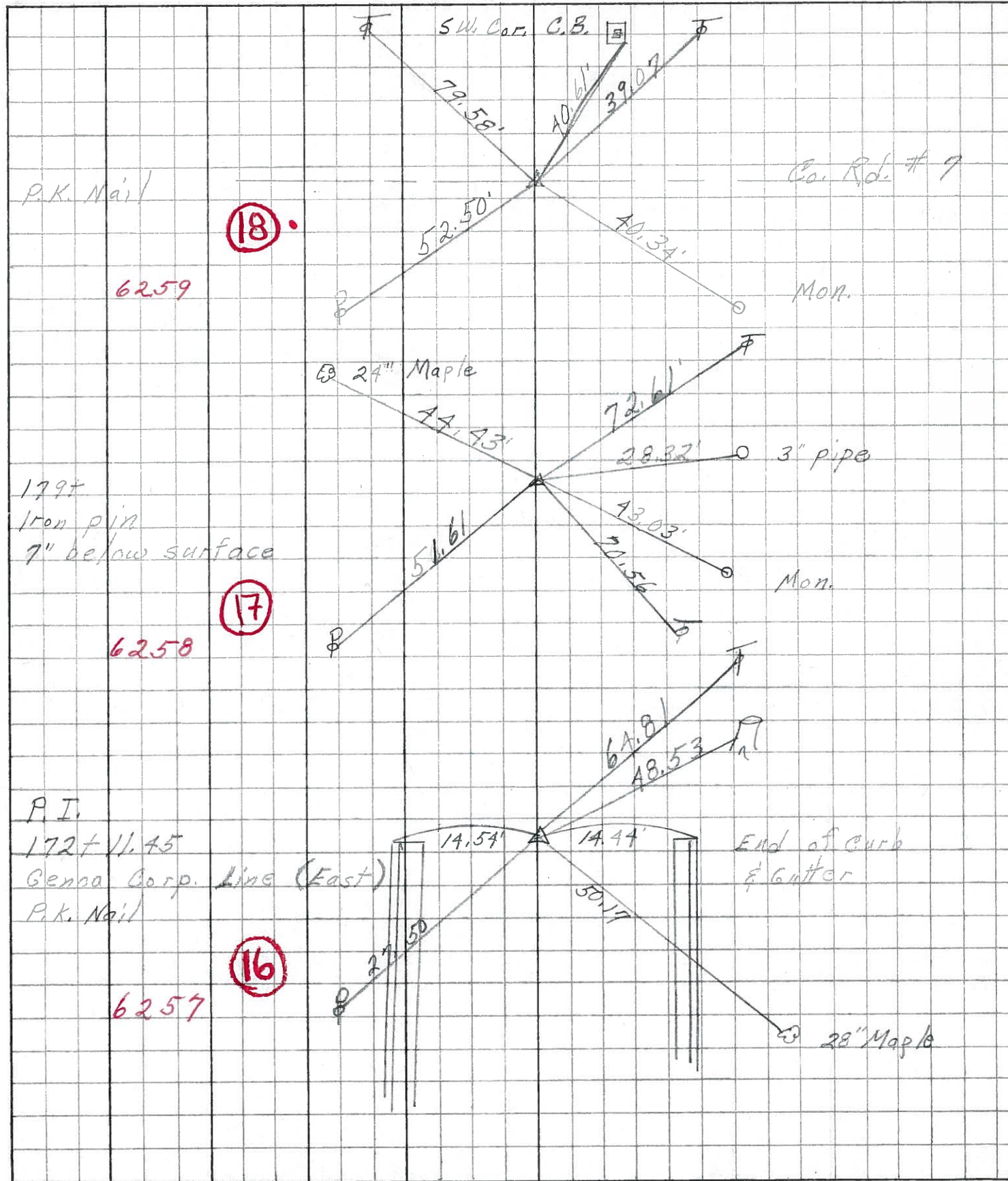
NOTE:
 SR 51-REF 24



| PERSONNEL | TITLE | PERSONNEL | TITLE |
|-----------|-------|-----------|-------|
| Schneider | | | |
| Mosser | | | |
| Barbour | | | |
| Potts | | | |

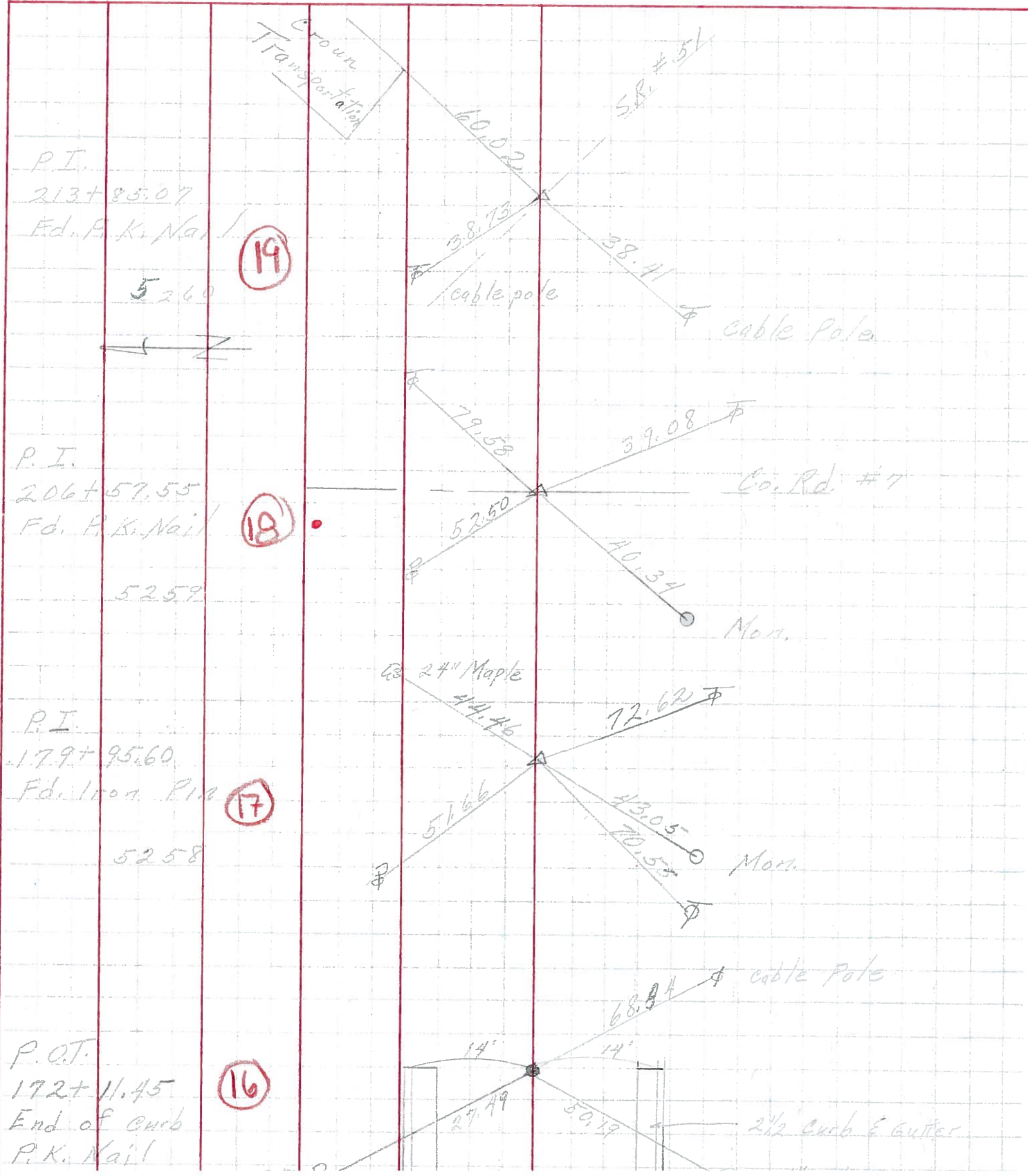
COUNTY Ottawa DATE 7-8-68
 S. R. 163 WEATHER Fair
 SEC. Wood Co. Line to Oak Harbor TEMP. 90°

DESCRIPTION Ties for Control Points JOB NO. _____



| | | | | | |
|------------------|-------|-----------|-------|------------------|----------------|
| PERSONNEL | TITLE | PERSONNEL | TITLE | COUNTY | DATE |
| <u>Schneider</u> | | | | <u>Ottawa</u> | <u>Jan. 67</u> |
| <u>Mosser</u> | | | | S. R. <u>163</u> | WEATHER |
| <u>Barbour</u> | | | | SEC. <u>3.24</u> | TEMP. |
| <u>Potts</u> | | | | | |

DESCRIPTION Control Points JOB NO.



O.D.O.T. DISTRICT 2 SURVEY OFFICE

①

PERSONNEL

REFERENCE NO. 19

SHEET OF

NOTES CROWN

H.C. RIPPLE

R.C. BARBOUR

GEYMAN

DATE 1970 References

WEATHER

TEMP.

ROUTE #163

COUNTY OTTAWA

TOWNSHIP CLAY

SECTION 2

T. 6 N. R. 13 E

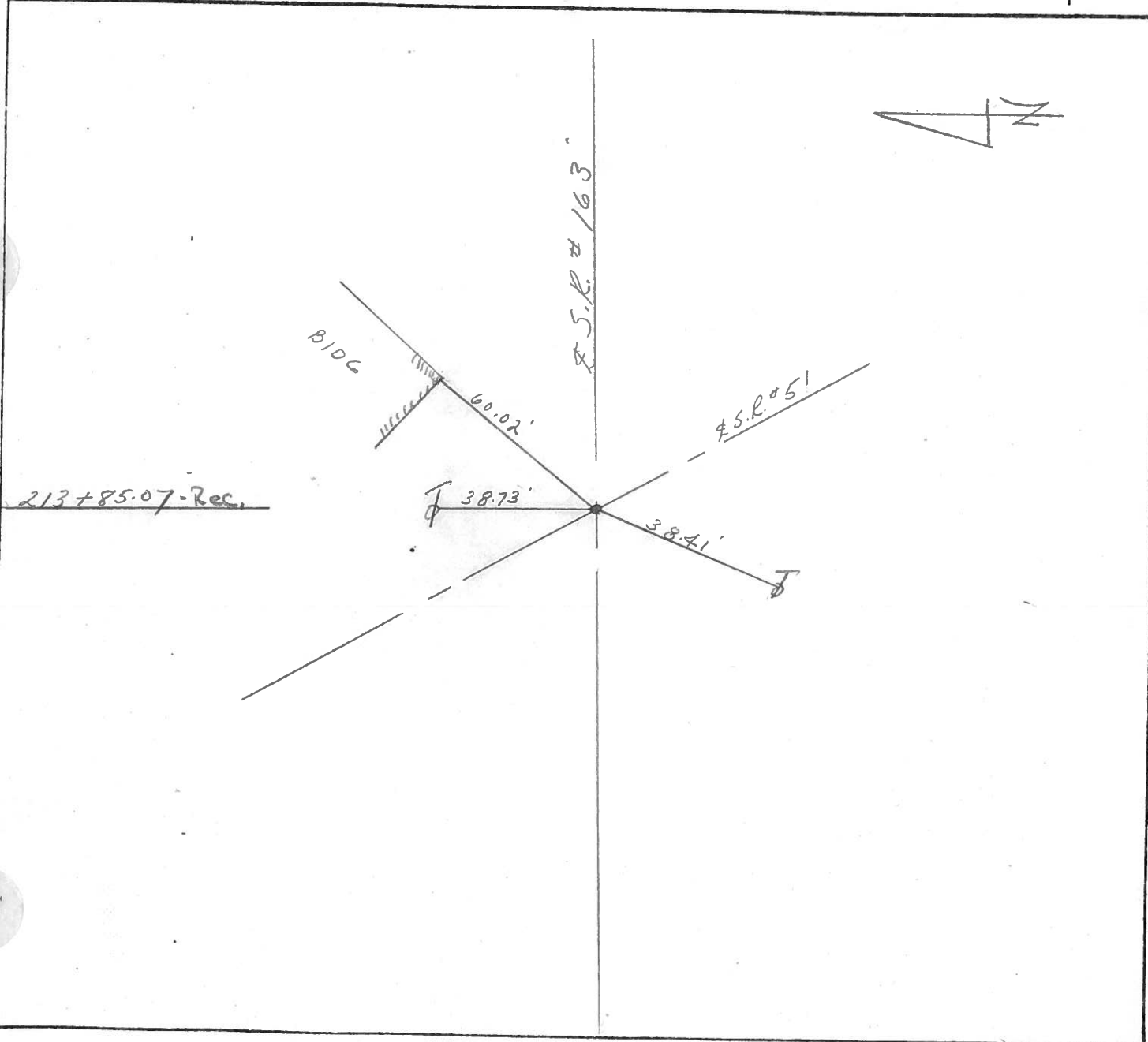
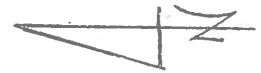
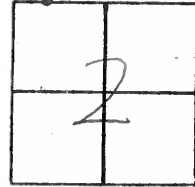
TYPE MONUMENT

ON SURFACE - BELOW ON SURFACE

LEFT - & PAW'T. - RIGHT &

 TO EDGE PAVEMENT

S.L.M. 405



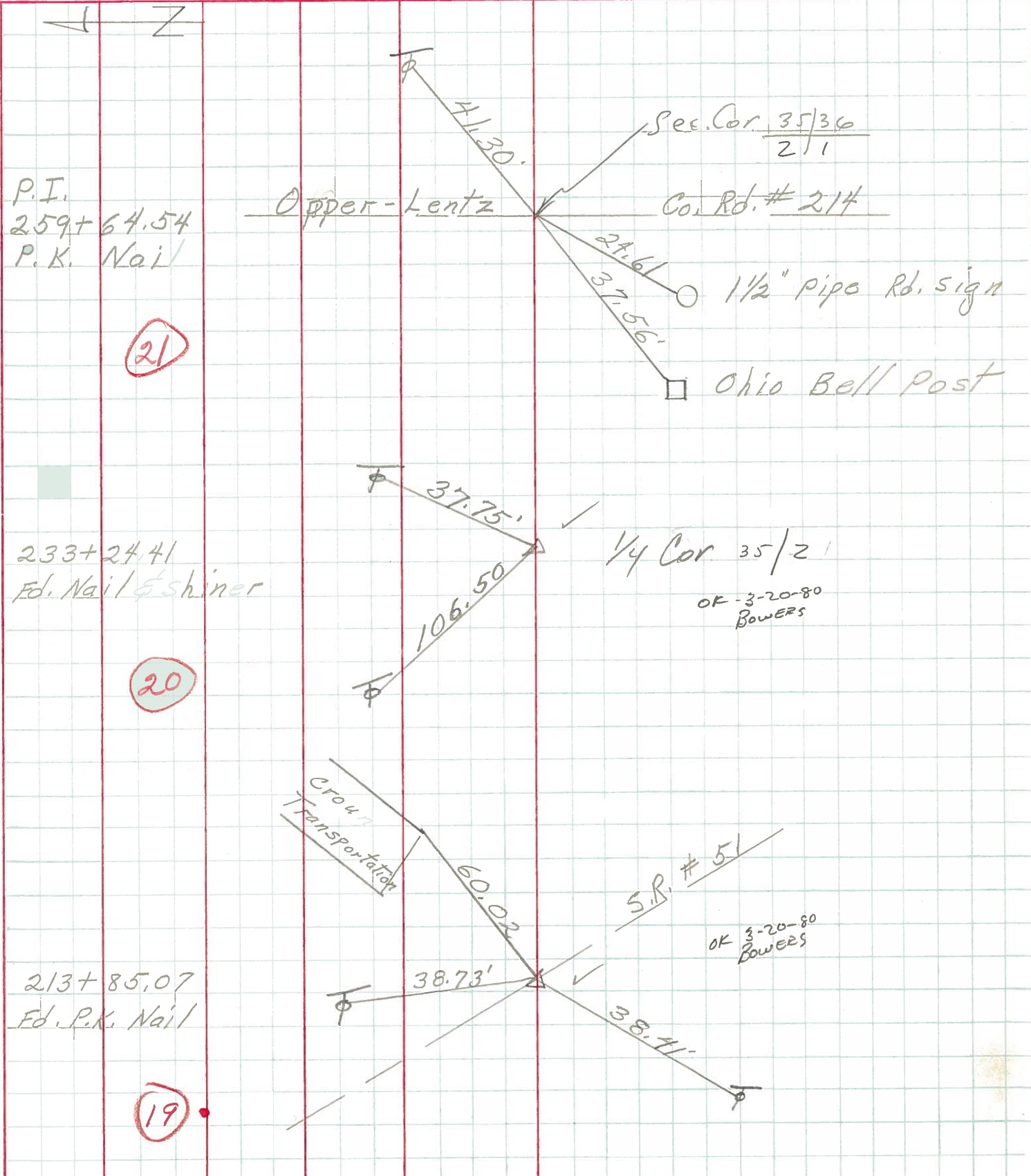
PERSONNEL TITLE PERSONNEL TITLE

COUNTY Ottawa DATE 9-70

S. R. 163 WEATHER

SEC. 2 & 35 TEMP.

DESCRIPTION Clay Twp. LEFT CENTER LINE RIGHT JOB NO.



| | | | | | |
|------------------|-------|-----------|-------|---------------|----------------|
| PERSONNEL | TITLE | PERSONNEL | TITLE | COUNTY | DATE |
| <u>Schneider</u> | | | | <u>Ottawa</u> | <u>Jan. 67</u> |
| <u>Mosser</u> | | | | S. R. | |
| <u>Barbour</u> | | | | <u>163</u> | WEATHER |
| <u>Potts</u> | | | | SEC. | |
| | | | | <u>3.24</u> | TEMP. |

DESCRIPTION Control Points JOB NO. _____

