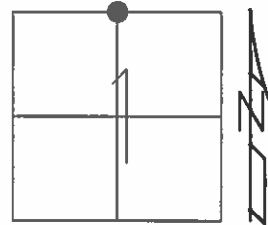


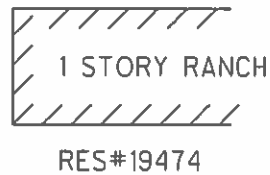
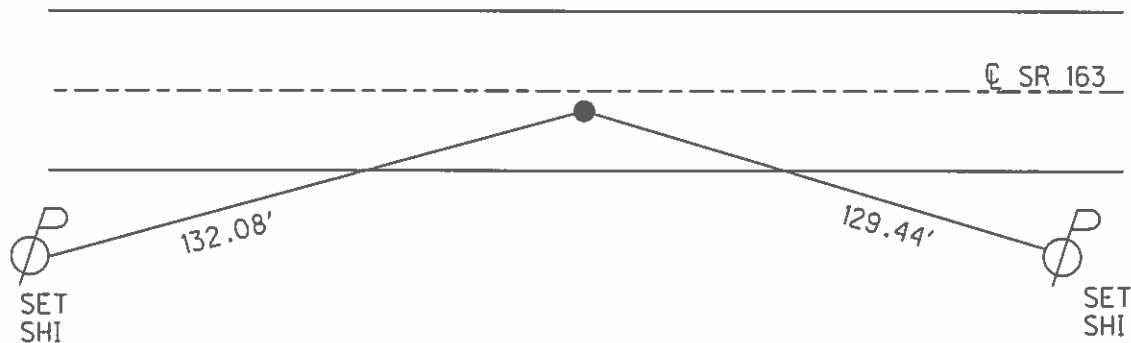
O.D.O.T. DISTRICT 2 SURVEY OFFICE (USE ONLY)

PERSONNEL \_\_\_\_\_ REFERENCE NO. 22 SHEET 5 OF 20  
NOTES RHOADES DATE 5/7/14 ROUTE SR 163  
H.C. CODER WEATHER CLEAR COUNTY OTTAWA  
R.C. RHOADES TEMP. 70° F TOWNSHIP CLAY  
SECTION 1  
T 6 N R 13 E

TYPE MONUMENT MAG NAIL  
ON SURFACE - ~~BELOW~~ ON  
~~LEFT~~ - CL PAV'T - RIGHT 2.5'  
8.5' TO RT. EDGE PAVEMENT  
S.L.M. 286+43  
Grid: Northing: 674818.839 Easting: 1746635.772



RECORD: P.O.T.  
STA: 286+24.52  
BOAT SPK. ATOP  
P.K.NAIL  
1" BELOW  
7-23-85  
SET PK/WASHER  
9-24-93, RCC  
FD PK/WASHER  
7-26-02, MB  
FD PK/WASHER  
1-03-12, MC  
SET MAG/WASHER  
REF22  
6-06-2013  
FD MON BOX  
NEWREF225-01-14, TMR



# O.D.O.T. DISTRICT 2 SURVEY OFFICE

PERSONNEL

REFERENCE NO. 22

SHEET 3 OF 24

NOTES RIPPLE

H.C. BARBOUR

R.C. GEYMAH

DATE 6-15-1993

WEATHER FAIR

TEMP. 75°

ROUTE # 163

COUNTY OTAWA

TOWNSHIP CLAY

SECTION 1

T. 6 N R. 13 E

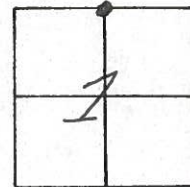
TYPE MONUMENT PK/WASHER

~~ON~~ SURFACE - BELOW 1" ±

~~SET~~ - CL PAV'T. - RIGHT 2.5'

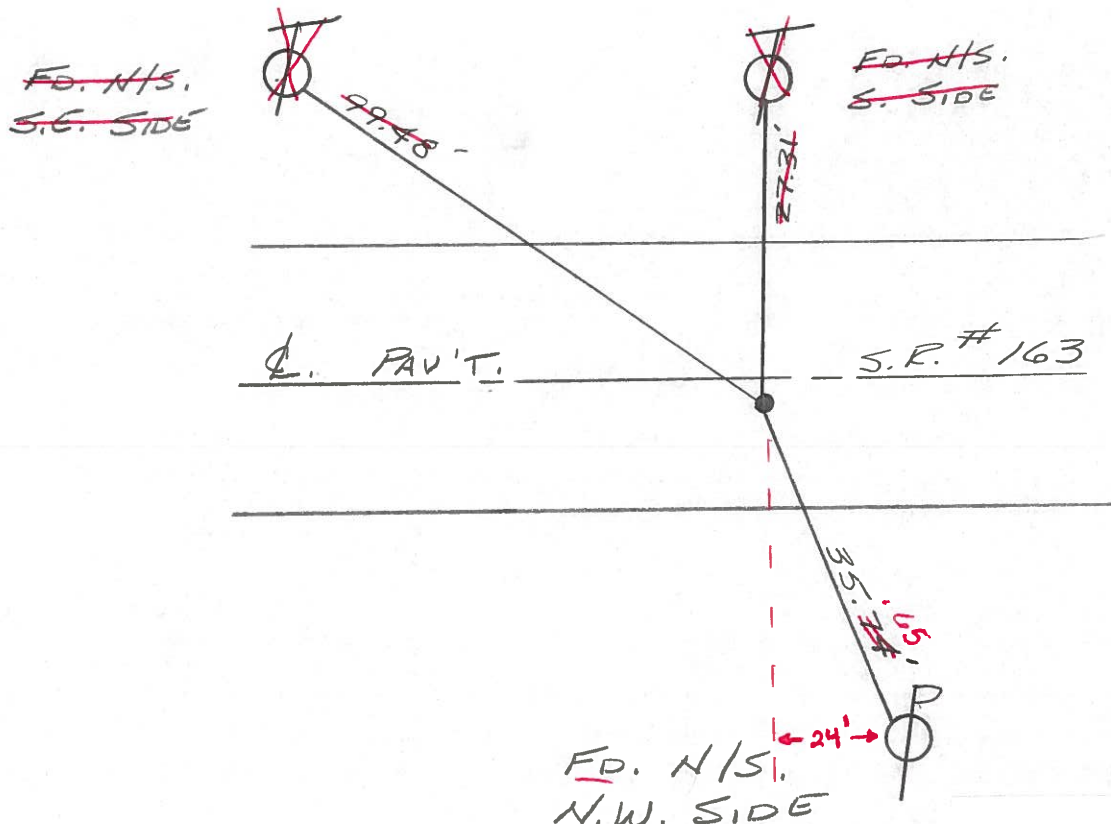
8.5' TO RT. EDGE PAVEMENT

S.L.M. 286+43



RECORD: 7-23-1985  
 P.O.T. STA. 286+24.52  
 BOAT SPK. ATOP PK,  
 1" BELOW SURFACE

SET PK/WASHER  
 9-24-1993  
 RCC



Fd PK/Washer  
 7-26-02  
 MTS

Preventive Maintenance  
 Microsurfaced 2002  
 Existing Point Uncovered  
 Date 11-29-02

O.D.O.T. DISTRICT 2 SURVEY OFFICE

④

PERSONNEL

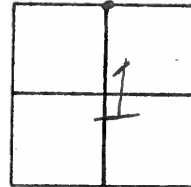
NOTES CRONIN  
H.C. RIPPLE  
R.C. BARBOUR  
GEYMAN

REFERENCE NO. 22  
DRAWN 7/30/85  
DATE 7/23/85  
WEATHER SUNNY  
TEMP. 71°

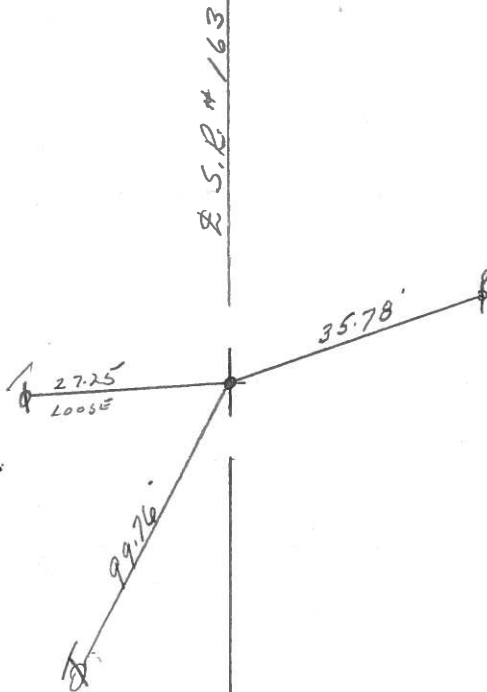
SHEET \_\_\_\_\_ OF \_\_\_\_\_

ROUTE 163  
COUNTY OTTAWA  
TOWNSHIP CLAY  
SECTION 1  
T 6 N R 13 E

TYPE MONUMENT BOAT SPIKE ATOP P.K.  
ON SURFACE - BELOW 1" below SURFACE  
LEFT - & PAV'T. - RIGHT 2.5' RT. & PAVMT.  
TO \_\_\_\_\_ EDGE PAVEMENT  
S.L.M. 5.42



P.O.T.  
286 + 24.52



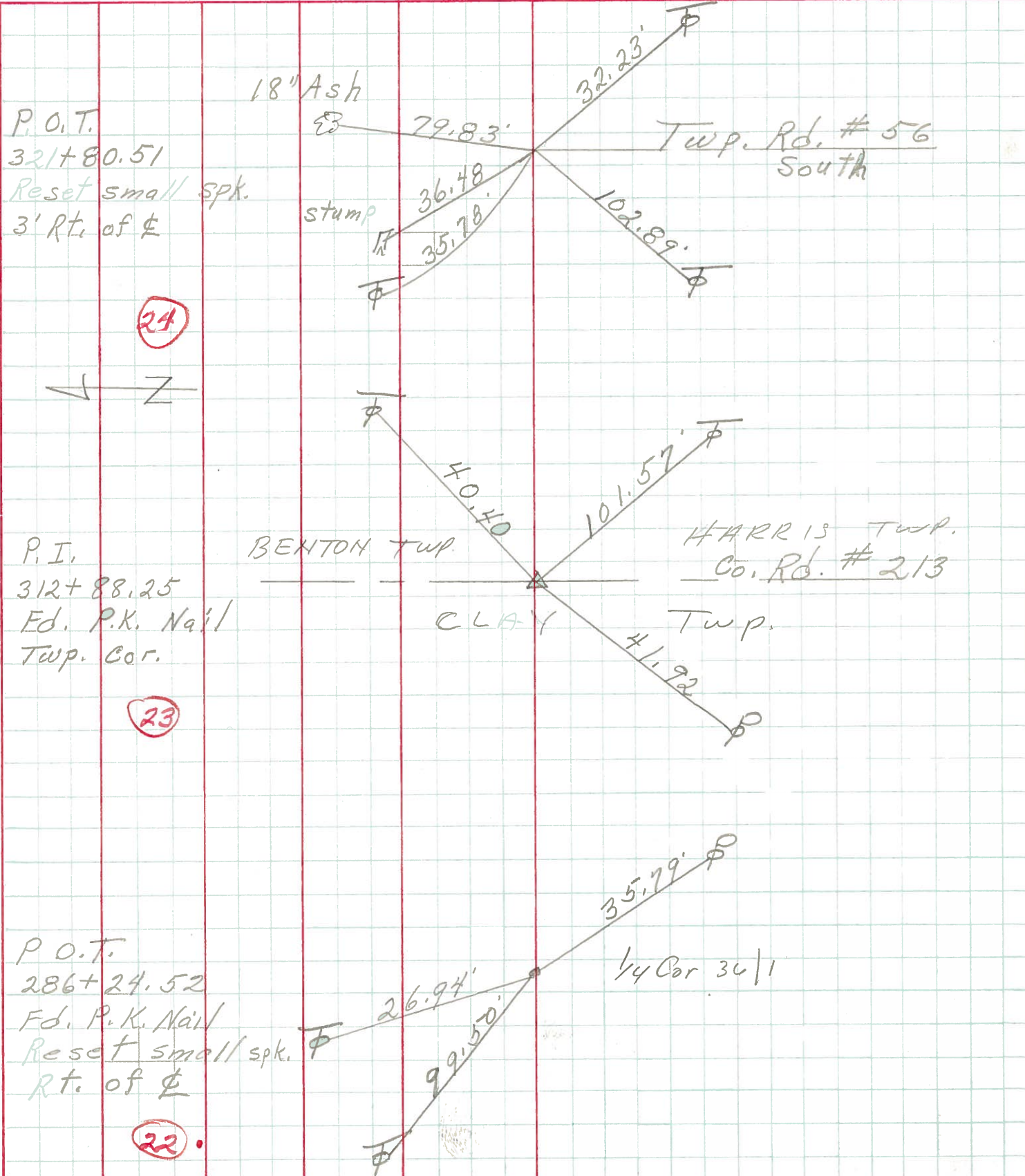
PERSONNEL TITLE PERSONNEL TITLE

COUNTY Ottawa DATE Sept. 70

S. R. 163 WEATHER

SEC. 36, 31 & 1, 6 TEMP.

DESCRIPTION Clay, Benton & Harris Twp. JOB NO.





PERSONNEL TITLE PERSONNEL TITLE

COUNTY Ottawa

DATE Jan 196

S. R. 163

WEATHER

SEC. 3.24

TEMP.

DESCRIPTION

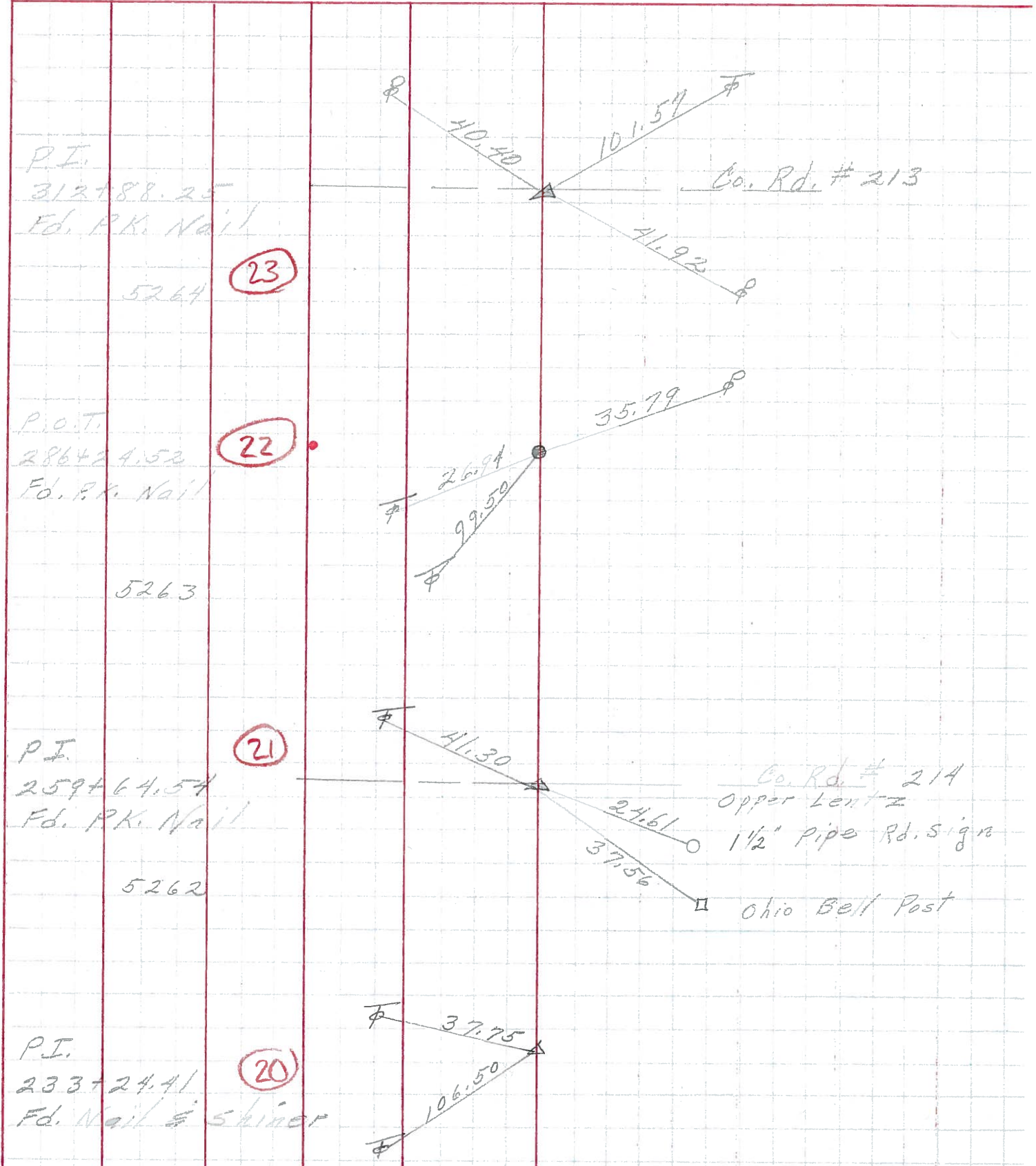
Control Points

JOB NO.

LEFT

CENTER LINE

RIGHT



P.I.  
 312+88.25  
 Fd. P.K. Nail  
 5264 (23)

P.O.T.  
 286+24.52  
 Fd. P.K. Nail  
 5263 (22)

P.I.  
 259+64.54  
 Fd. P.K. Nail  
 5262 (21)

P.I.  
 233+24.41  
 Fd. Nail & Shiner  
 (20)