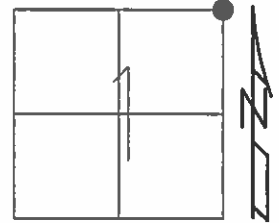


O.D.O.T. DISTRICT 2 SURVEY OFFICE (USE ONLY)

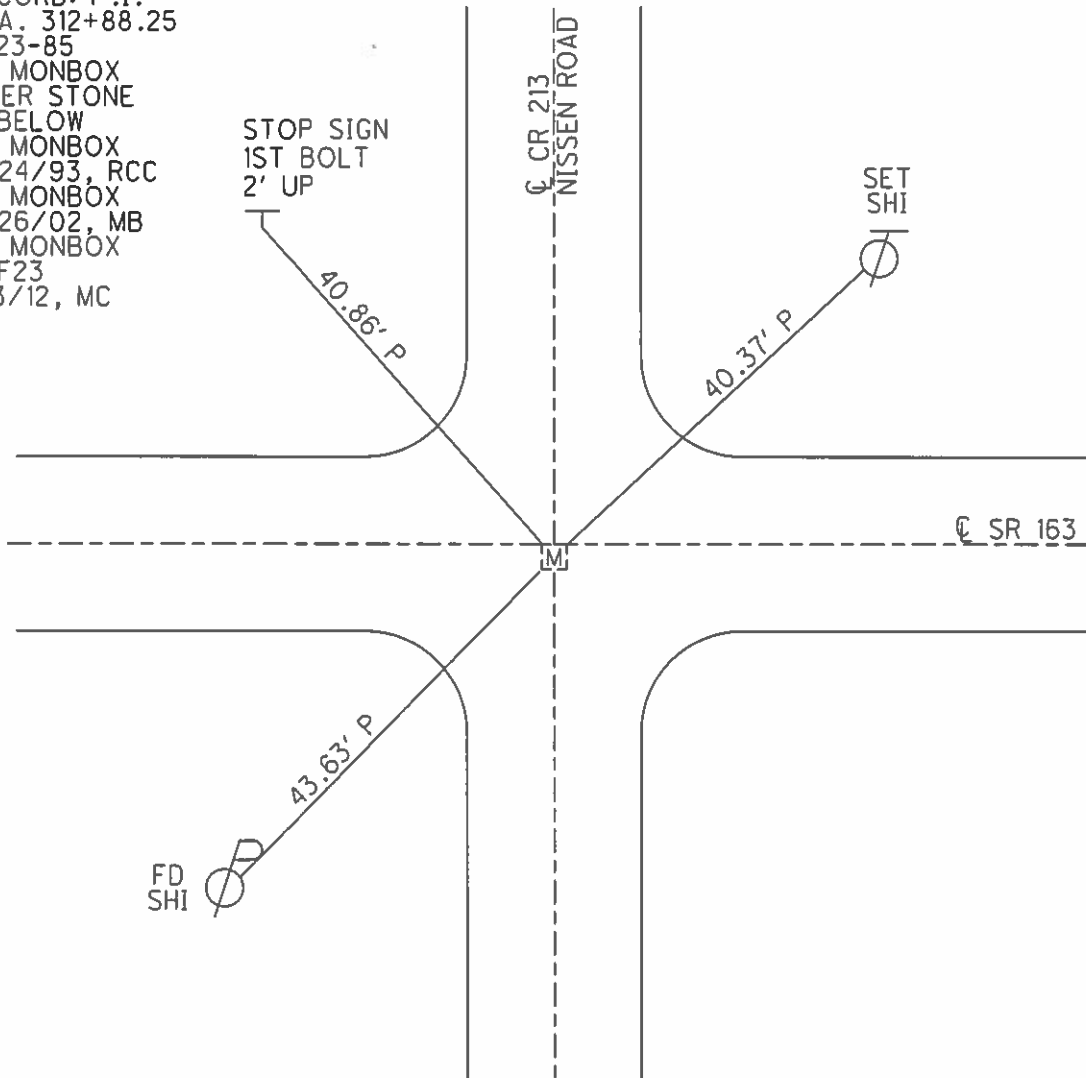
PERSONNEL _____ REFERENCE NO. 23 SHEET 6 OF 20
 NOTES RHOADES DATE 5/7/13 ROUTE SR 163
 H.C. CODER WEATHER CLEAR COUNTY OTTAWA
 R.C. RHOADES TEMP. 70° F TOWNSHIP HARRIS
 _____ SECTION 1
 _____ T 6 N R 14 E

TYPE MONUMENT MONBOX
~~ON SURFACE~~ - BELOW 3"
~~LEFT~~ - ℄ PAV'T - RIGHT 0.5', ON ℄ S
10.5' TO RT EDGE PAVEMENT
 S.L.M. 313+14



Grid: Northing: 674830.6373 Easting: 1749298.8097

RECORD: P.I.
 STA. 312+88.25
 7-23-85
 FD MONBOX
 OVER STONE
 1" BELOW
 FD MONBOX
 9/24/93, RCC
 FD MONBOX
 7/26/02, MB
 FD MONBOX
 REF23
 1/3/12, MC



O.D.O.T. DISTRICT 2 SURVEY OFFICE

PERSONNEL

REFERENCE NO. 23

SHEET 4 OF 24

NOTES CHENEY

H.C. RIPPLE

R.C. BARBOUR

DATE 6-17-1993

WEATHER FAIR

TEMP. 80°

ROUTE #163

COUNTY OTTAWA

TOWNSHIP CLAY

SECTION 1

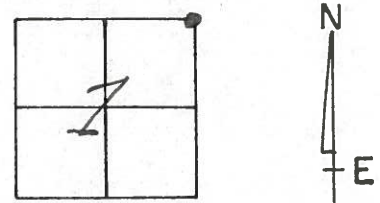
T4NR13E

TYPE MONUMENT MONUMENT BOX

~~ON~~ SURFACE - BELOW 3"±

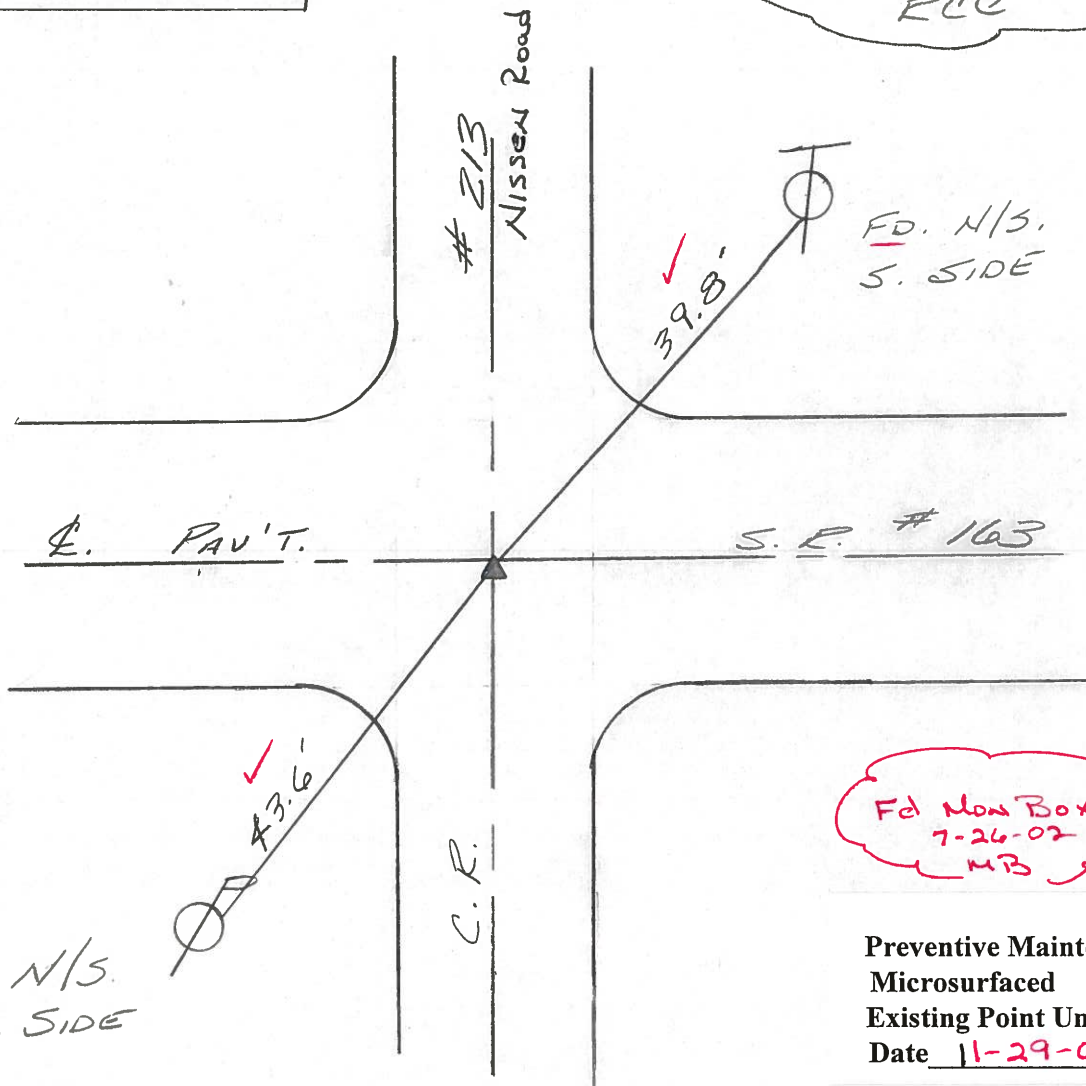
~~10.5'~~ - 0.5' ON E. C.R. # 213 TO S.
10.5' TO Rt. EDGE PAVEMENT

S.L.M. 313+14



RECORD: 7-23-1985
P.I. STA. 312+88.25
MON. BOX OVER STONE
1" BELOW SURFACE

MON. BOX @ SURFACE
9-24-1993
RCC



FD. N/S.
N.E. SIDE

Fd Mon Box
7-26-02
MB

Preventive Maintenance
Microsurfaced 2002
Existing Point Uncovered
Date 11-29-02

O.D.O.T. DISTRICT 2 SURVEY OFFICE

5

PERSONNEL

NOTES CRONIN
H.C. RIPPLE
R.C. BARBOUR
GEYMAN

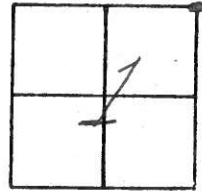
REFERENCE NO. 23

DRAWN 7/30/85
DATE 7/23/85
WEATHER SUNNY
TEMP. 71°

SHEET _____ OF _____

ROUTE 163
COUNTY OTTAWA
TOWNSHIP CLAY
SECTION 1
T 6 N R 13 E

TYPE MONUMENT Mon. Box OVER Stone
ON SURFACE - BELOW 1" BELOW
LEFT- & PAV'T. - RIGHT ± PAVMT
TO _____ EDGE PAVEMENT
S.L.M. 5.925±



± S.R. #163

P.I.

312+88.25



C.R. #213

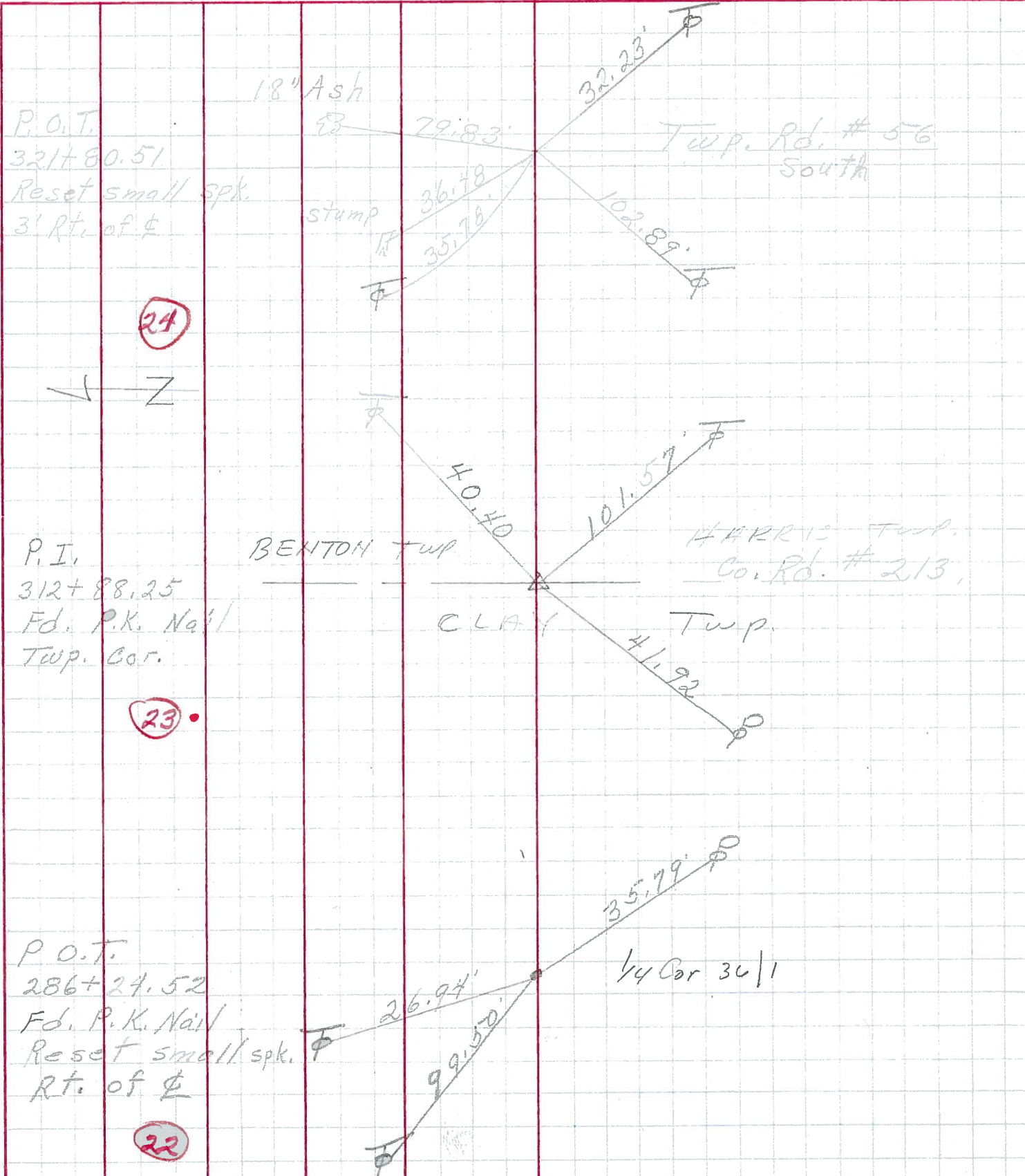
PERSONNEL TITLE PERSONNEL TITLE

COUNTY Ottawa DATE Sept. 70

S. R. 163 WEATHER

SEC. 36, 31 & 1, 6 TEMP.

DESCRIPTION Clay, Benton & Harris Twp. JOB NO.



PERSONNEL TITLE PERSONNEL TITLE

COUNTY Ottawa DATE Jan 196

S. R. 163 WEATHER

SEC. 3.24 TEMP.

DESCRIPTION Control Points JOB NO.

LEFT CENTER LINE RIGHT

