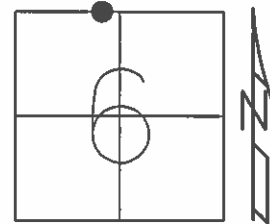


O.D.O.T. DISTRICT 2 SURVEY OFFICE (USE ONLY)

PERSONNEL _____ REFERENCE NO. 25 SHEET 8 OF 20
 NOTES RHOADES DATE 5/7/13 ROUTE SR 163
 H.C. CODER WEATHER FAIR COUNTY OTTAWA
 R.C. RHOADES TEMP. 70° F TOWNSHIP HARRIS
 _____ SECTION 6
 _____ T 6 N R 14 E

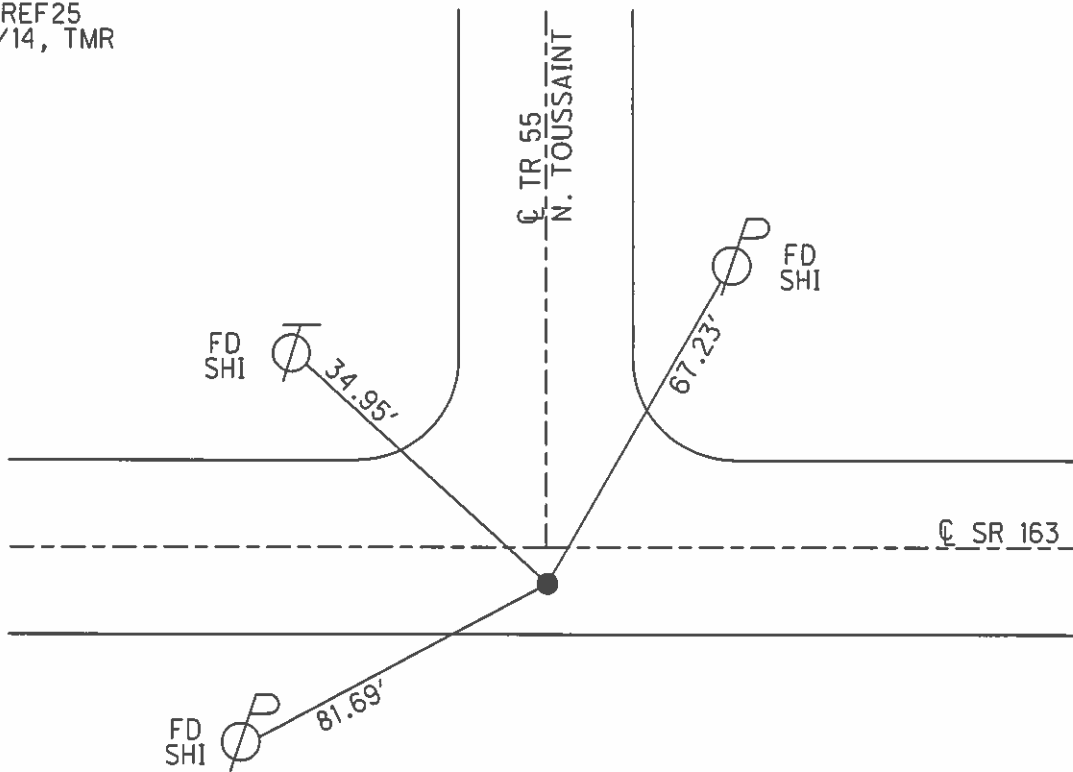
TYPE MONUMENT PK/WASHER
 ON SURFACE - ~~BELOW~~ ON _____
~~LEFT~~ - ☉ PAV'T - RIGHT 5'
6.5' TO RT EDGE PAVEMENT
 S.L.M. 333+67



Grid: Northing: 674820.995 Easting: 1751377.962

RECORD: P.O.T
 STA 333+67.31
 PK/WASHER ATOP
 BOAT SPK/WASHER
 7/23/85
 SET P.K./WASHER
 9/24/93, RCC
 FD P.K./WASHER
 7/26/02, MB
 FD P.K./WASHER
 1/3/12, MC
 SET MAG/WASHER
 NEWREF25
 5/1/14, TMR

NOTE:
 ON ☉ SURVEY AND CONSTRUCTION
 NOT ON SECTION LINE
 PER OTT-163-5.98 (1995)



O.D.O.T. DISTRICT 2 SURVEY OFFICE

PERSONNEL _____

REFERENCE NO. 25

SHEET 6 OF 24

NOTES CHENEY

H.C. RIPPLE

R.C. BARBOUR

DATE 6-17-1993

WEATHER FAIR

TEMP. 80°

ROUTE #163

COUNTY OTTAWA

TOWNSHIP HARRIS

SECTION 6

T6N R14E

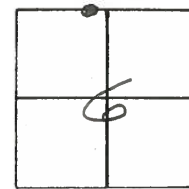
TYPE MONUMENT PK/WASHER

ON SURFACE - ~~BELOW~~ ON

~~LEFT~~ PAV'T. - RIGHT 5'

6.5 TO RT. EDGE PAVEMENT

S.L.M. _____



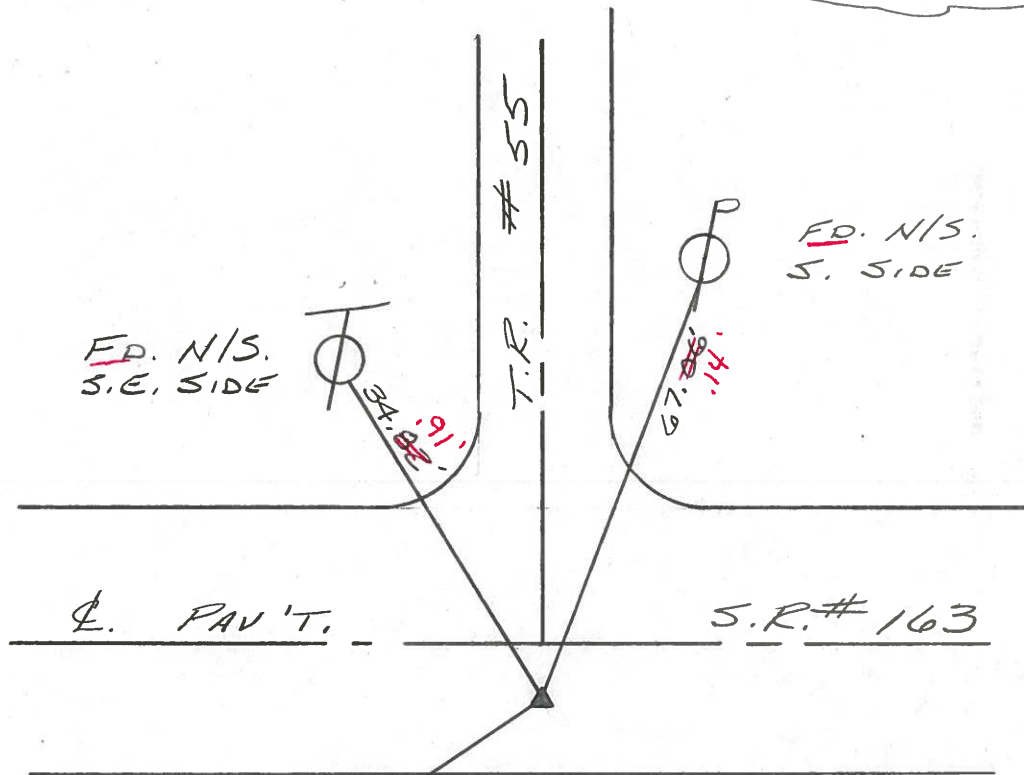
RECORD: 7-23-1985

P.O.T. STA. 333+67.31

PK/WASHER ATOP

BOAT SPK/WASHER

SET PK/WASHER
9-24-1993
RCC



FD. N/S.
N.E. SIDE

Fd PK/Washer
7-26-02
MB

Preventive Maintenance
Microsurfaced 2002
Existing Point Uncovered
Date 11-29-02

O.D.O.T. DISTRICT 2 SURVEY OFFICE

PERSONNEL

REFERENCE NO. 25

SHEET 1 OF

NOTES CRONIN

DRAWN 7/30/85

H.C. RIPPLE

DATE 7/23/85

R.C. BARBOUR

WEATHER SUNNY

GEYMAN

TEMP. 71°

ROUTE 163

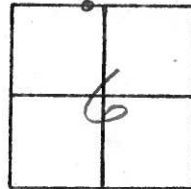
COUNTY OTTAWA

TOWNSHIP HARRIS

SECTION 6

T. 6 N. R. 14 E.

TYPE MONUMENT P.K. & WASHER ATop BOAT
 ON SURFACE - BELOW Spice & WASHER - ON
 LEFT - & PAV'T. - RIGHT SURFACE - 5' RT. & PAV'T.
 TO EDGE PAVEMENT
 S.L.M. 6.32



P.O.T.
333 + 67.31

T.R. # 55

E.S.R. # 163

67.04'

34.86'

87.73'



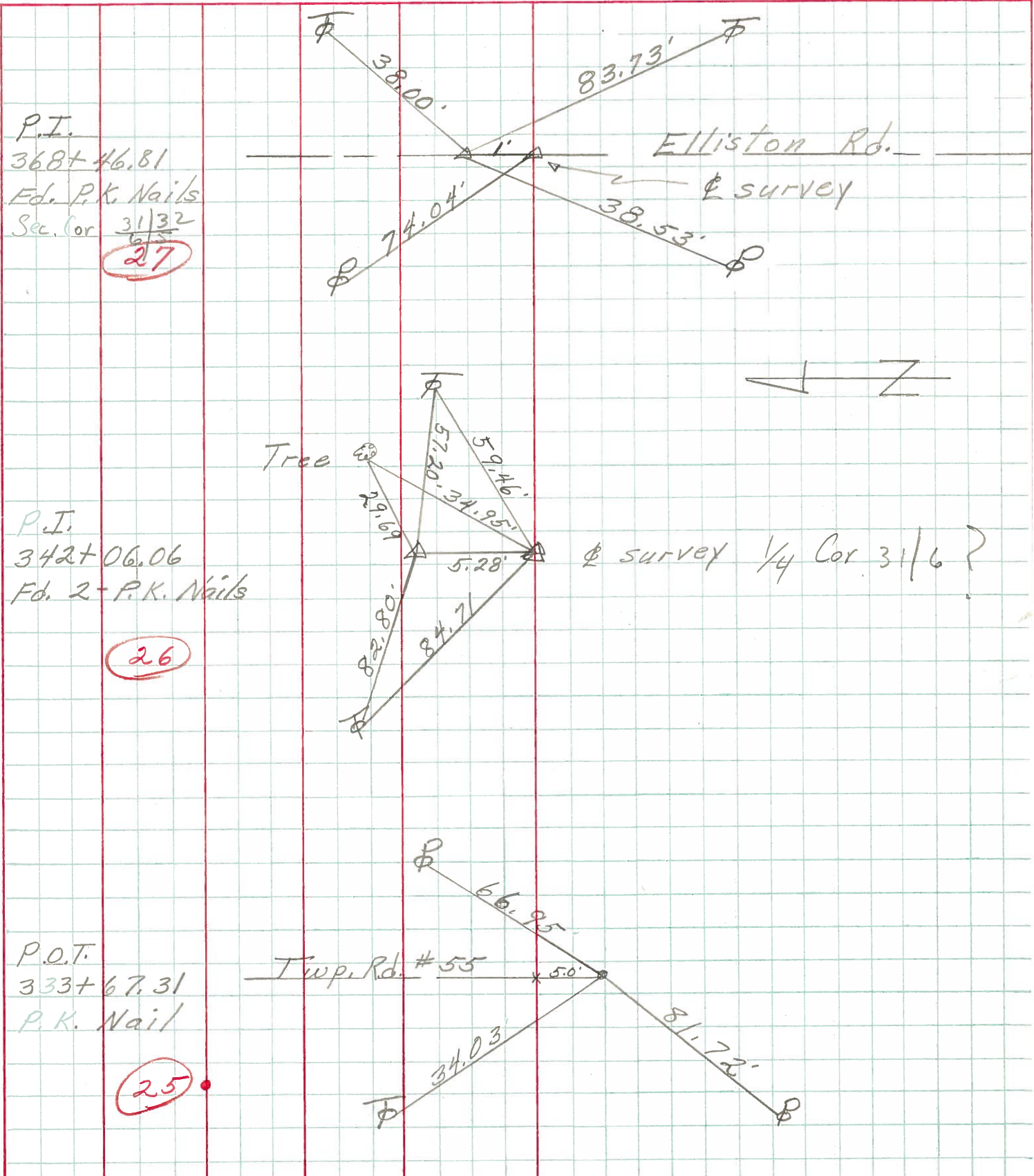
PERSONNEL TITLE PERSONNEL TITLE

COUNTY Ottawa DATE Sept, 1970

S. R. 163 WEATHER

SEC. 31 & 6 - 32 & 5 TEMP.

DESCRIPTION Benton & Harris Twp. JOB NO.



PERSONNEL _____ TITLE _____ PERSONNEL _____ TITLE _____
 COUNTY Ottawa DATE Jan. 196
 S. R. 163 WEATHER _____
 SEC. 3.24 TEMP. _____
 DESCRIPTION Control Points JOB NO. _____

	LEFT	CENTER LINE	RIGHT
P.I. 368+46.81 Fd. P.K. Nail Elliston Rd. 5268	(27)		
P.I. 342+06.06 Fd. 2 P.K. Nails 5268	(26)		
P.O.T. 333+47.31 set P.K. Nail 5266	(25)		
P.O.T. 321+80.51 set P.K. Nail 5265	(24)		