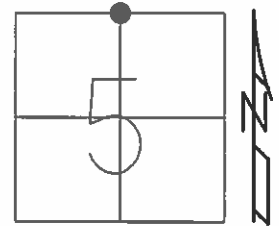


O.D.O.T. DISTRICT 2 SURVEY OFFICE (USE ONLY)

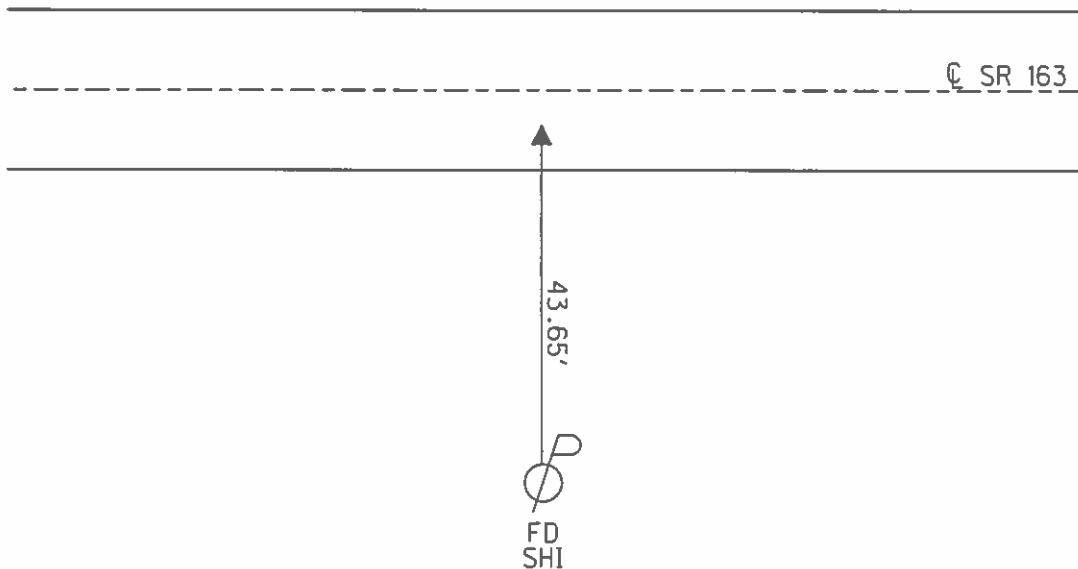
PERSONNEL _____ REFERENCE NO. 28 SHEET 12 OF 20
 NOTES RHOADES DATE 5/8/13 ROUTE SR 163
 H.C. CODER WEATHER CLOUDY COUNTY OTTAWA
 R.C. RHOADES TEMP. 60° F TOWNSHIP HARRIS
 _____ SECTION 5
 _____ T 6 N R 14 E

TYPE MONUMENT MAG NAIL
 ON SURFACE - ~~BELOW~~ ON
~~LEFT~~ - Q PAV'T - RIGHT 6'
4' TO RT. EDGE PAVEMENT
 S.L.M. 395+27



Grid: Northing: 674795.495 Easting: 1757494.480

RECORD: P.I.
 STA 394+84.79
 PK/WASHER ATOP
 PK/WASHER 7-23-85
 SET P.K./WASHER
 9/24/93, RCC
 FD P.K./WASHER
 7/26/02, MB
 FD P.K./WASHER
 1/3/12, MC
 SET MAG SPIKE
 REF28
 6/6/13
 FD MONBOX
 NEWREF28
 5/1/14, TMR



O.D.O.T. DISTRICT 2 SURVEY OFFICE

PERSONNEL

REFERENCE NO. 28

SHEET 9 OF 24

NOTES CHENEY

H.C. RIPPLE

R.C. BARBOUR

DATE 6-17-1993

WEATHER FAIR

TEMP. 80°

ROUTE #163

COUNTY OTAWA

TOWNSHIP HARRIS

SECTION 5

T. 6N R. 14E

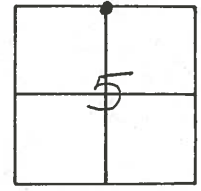
TYPE MONUMENT PK/WASHER

ON SURFACE - BELOW ON

~~1/2~~ - CL PAV'T. - RIGHT 6'

4' TO RT. EDGE PAVEMENT

S.L.M. 395+27



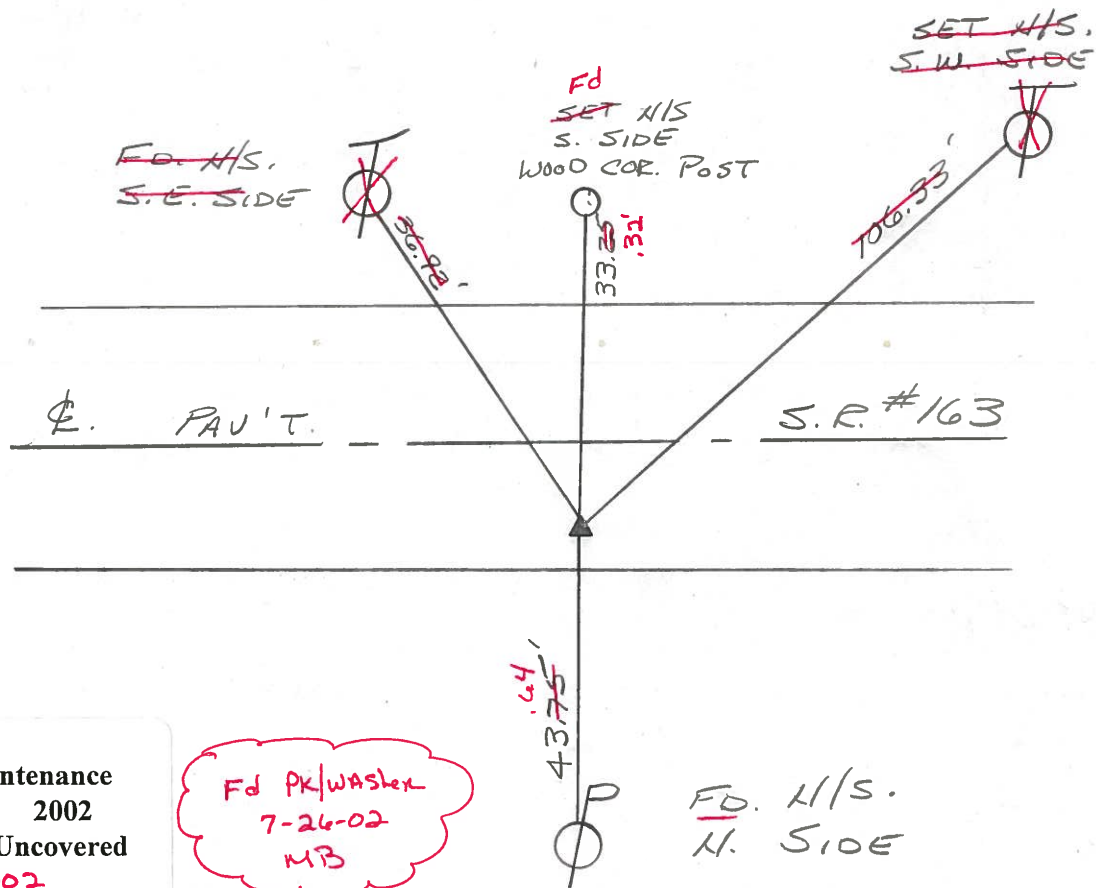
RECORD: 7-23-1985

P.I. STA. 394+84.79

PK/WASHER ATOP

PK/WASHER

SET PK/WASHER
9-24-1993
RCC



Preventive Maintenance
Microsurfaced 2002
Existing Point Uncovered
Date 11-29-02

Fd PK/WASHER
7-26-02
MB

Fd. H/S.
N. SIDE

O.D.O.T. DISTRICT 2 SURVEY OFFICE

10

PERSONNEL

REFERENCE NO. 28

SHEET OF

NOTES CROWIN

DRAWN 7/30/85

H.C. RIPPLE

DATE 7/23/85

R.C. BARBOUR

WEATHER SUNNY

GEYMAN

TEMP. 71°

ROUTE 163

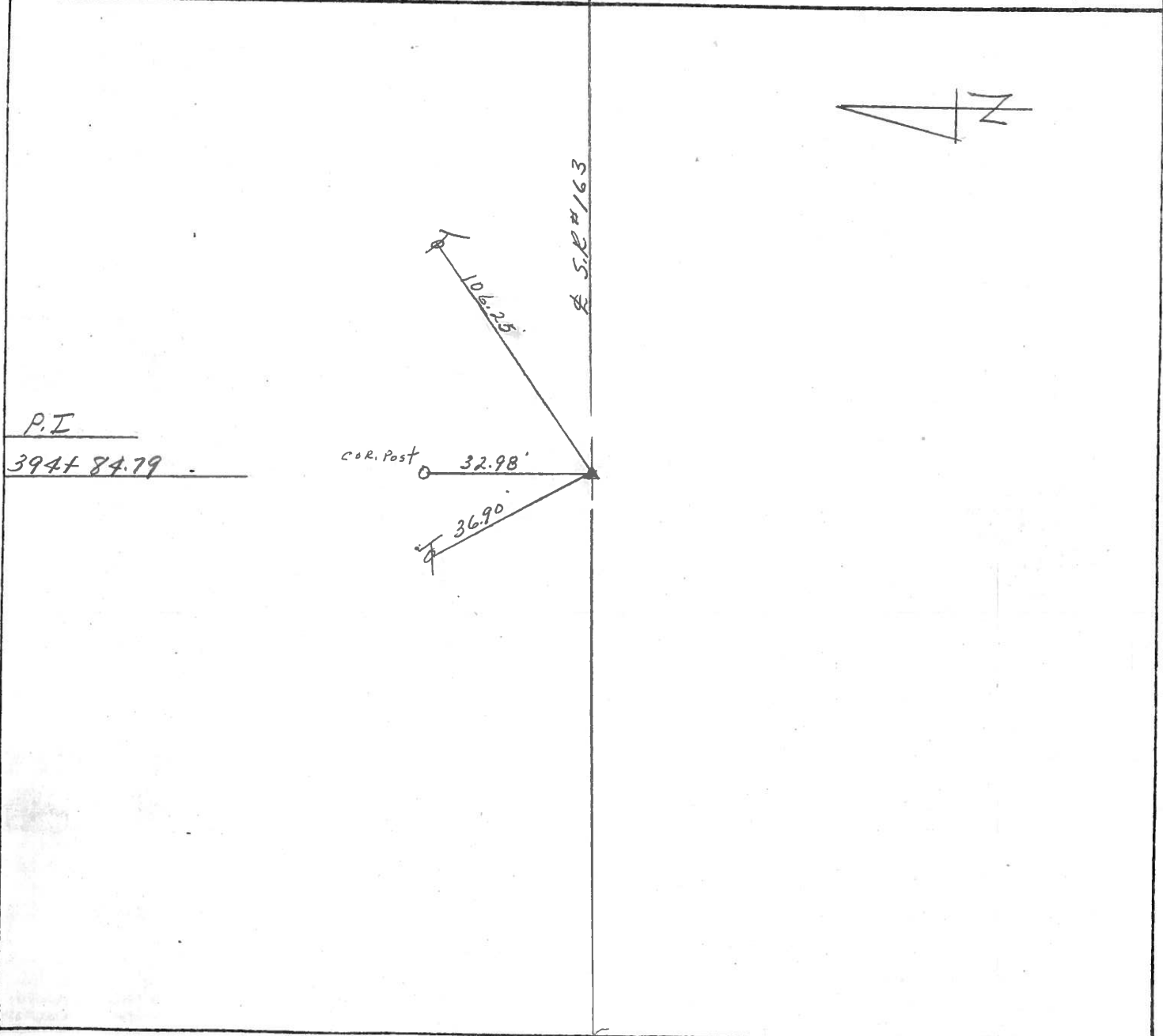
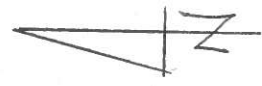
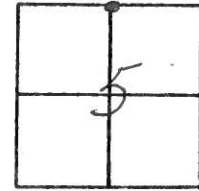
COUNTY OTTAWA

TOWNSHIP HARRIS

SECTION 5

T 6 N R 14 E

TYPE MONUMENT P.K. & WASHER AT OP P.K. &
ON SURFACE - BELOW WASHER - ON SURFACE
LEFT - CL PAV'T. - RIGHT 6' RT. & PAVMT.
TO EDGE PAVEMENT
S.L.M. 7.48 ±



PERSONNEL TITLE PERSONNEL TITLE

COUNTY Ottawa DATE Sept 70

S. R. 163 WEATHER

SEC. 33-32 & 5-4 TEMP.

DESCRIPTION Benton & Harris Twp.

JOB NO.

LEFT CENTER LINE RIGHT

I.
447+6 60
Fd. P.K. Nail
t. of ϕ

30

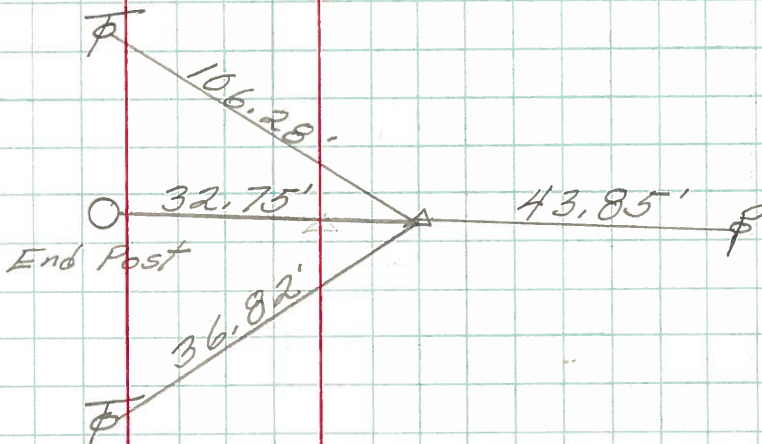
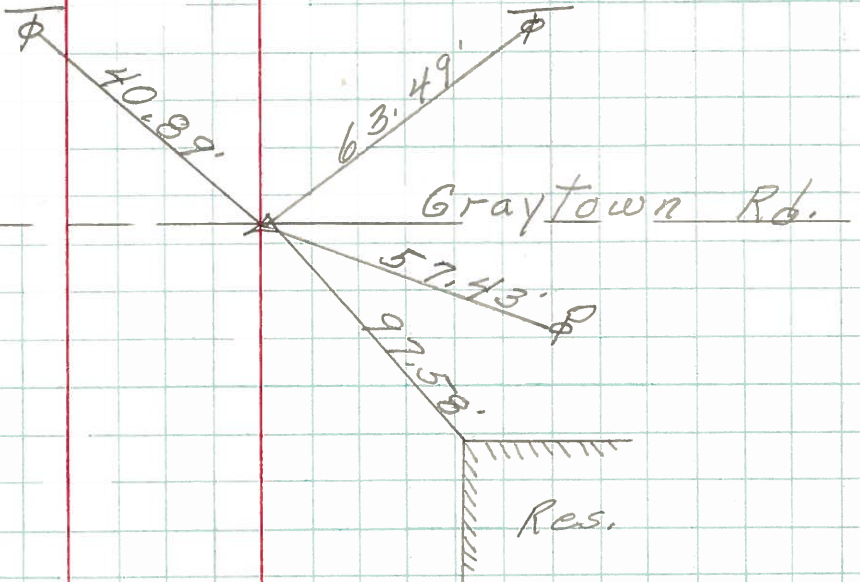
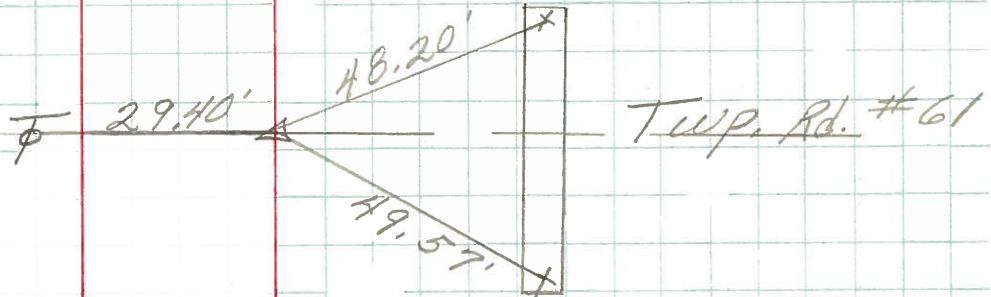


P.I.
421+25.35
Fd. P.K. Nail
Rt. of ϕ

29

P.I.
394+84.79
Fd. P.K. Nail
5' Rt. of ϕ

28



PERSONNEL TITLE PERSONNEL TITLE

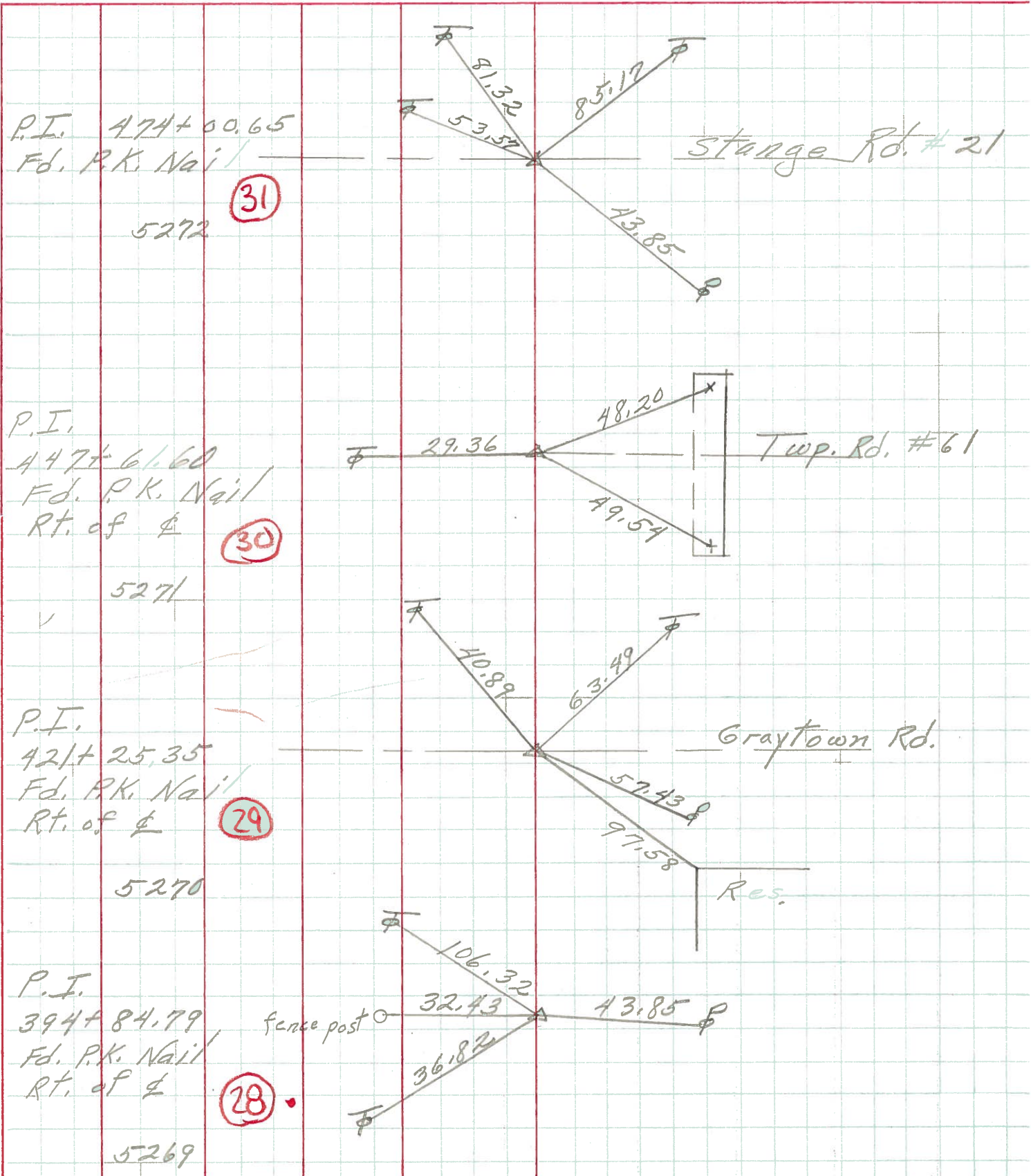
COUNTY Ottawa DATE Jan. 1969

S. R. 163 WEATHER

SEC. 3.24 TEMP.

DESCRIPTION Control Points JOB NO.

LEFT CENTER LINE RIGHT



PERSONNEL TITLE PERSONNEL TITLE

COUNTY Ottawa DATE _____

S. R. 163 WEATHER _____

SEC. 3.24 TEMP. _____

Jan 1967

DESCRIPTION Ties LEFT CENTER LINE RIGHT JOB NO. 02717

