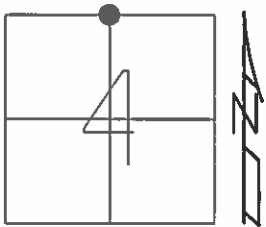


O.D.O.T. DISTRICT 2 SURVEY OFFICE (USE ONLY)

PERSONNEL _____ REFERENCE NO. 30 SHEET 15 OF 20
 NOTES RHOADES DATE 5/15/13 ROUTE SR 163
 H.C. CODER WEATHER WINDY COUNTY OTTAWA
 R.C. ROUSOS TEMP. 78° F TOWNSHIP HARRIS
 _____ SECTION 4
 _____ T 6 N R 14 E

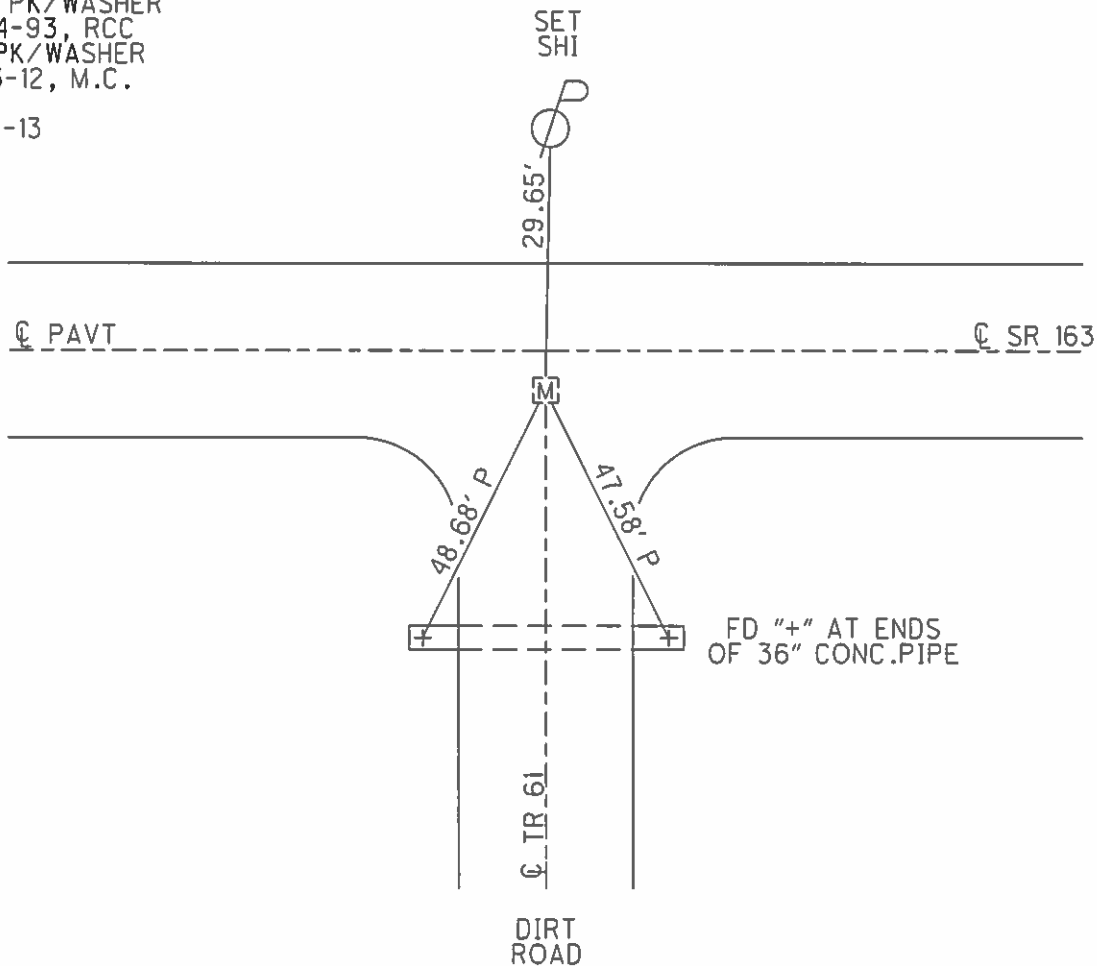
TYPE MONUMENT MONBOX
 ON SURFACE - ~~BELOW~~ ON _____
~~LEFT~~ - CL PAV'T - RIGHT 2'
8' TO RT EDGE PAVEMENT
 S.L.M. 448+15



Grid: Northing: 674786.538 Easting: 1762770.104

RECORD: P.I.
 STA 447+61.60
 PK/WASHER ATOP
 P.K.NAIL
 ATOP BOAT SPK.
 7-23-85
 SET PK/WASHER
 9-24-93, RCC
 FD PK/WASHER
 1-03-12, M.C.
 DNF
 5-15-13

SET MAG/WASHER
 REF30
 6-06-13
 FD MONBOX
 NEWREF30
 5-01-14, TMR



FD "+" AT ENDS
 OF 36" CONC.PIPE

O.D.O.T. DISTRICT 2 SURVEY OFFICE

PERSONNEL _____

REFERENCE NO. 30

SHEET 11 OF 24

NOTES CHENEY

H.C. RIPPLE

DATE 6-17-1993

ROUTE #163

R.C. BARBOUR

WEATHER FAIR

COUNTY OTTAWA

TEMP. 80°

TOWNSHIP HARRIS

SECTION 4

T. 6 N R. 14 E

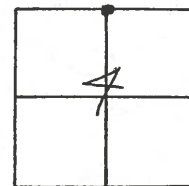
TYPE MONUMENT PK/WASHER

ON SURFACE - ~~BELOW~~ ON

~~8' TO RT. EDGE PAV'T.~~ - RIGHT 2'

8' TO RT. EDGE PAVEMENT

S.L.M. 448+15



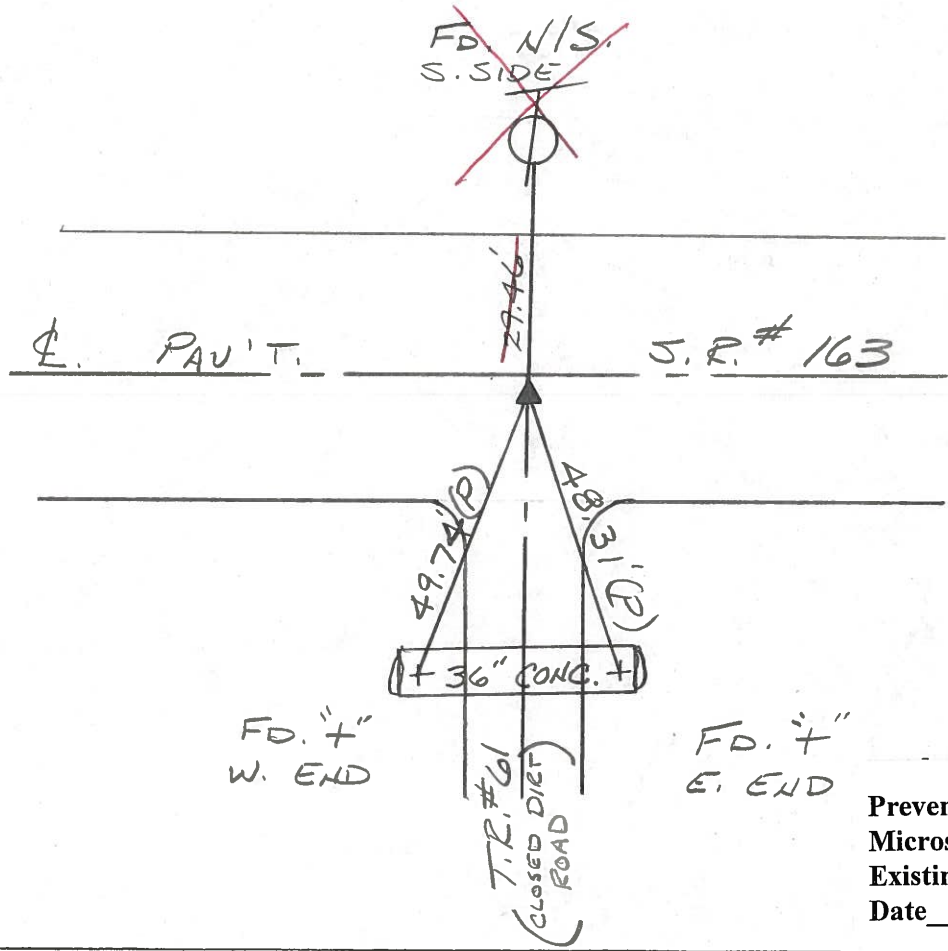
RECORDED: 7-23-1985

P.I. STA. 447+61.60

PK/WASHER ATOP PK.

ATOP BOAT SPK.

SET PK/WASHER
9-24-1993
RCC



FD. "+"
W. END

FD. "+"
E. END

T.R. #61
(CLOSED DIET
ROAD)

Preventive Maintenance
Microsurfaced 2000
Existing Point Uncovered
Date 5-15-00

O.D.O.T. DISTRICT 2 SURVEY OFFICE

12

PERSONNEL

REFERENCE NO. 30

SHEET OF

NOTES CROWIN

7/30/85

H.C. RIPPLE

DATE 7/23/85

ROUTE 163

R.C. BARBOUR

WEATHER SUNNY

COUNTY OTTAWA

GEYMAN

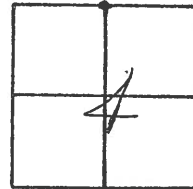
TEMP.

TOWNSHIP HARRIS

SECTION 4

T 6 N R 14 E

TYPE MONUMENT P.K. WASHER ATOP P.K. ATOP
ON SURFACE - BELOW BOATS PK. - ON SURFACE
LEFT - CL. PAV'T. - RIGHT 2.5' RT. & PAVMT.
 TO EDGE PAVEMENT
S.L.M.

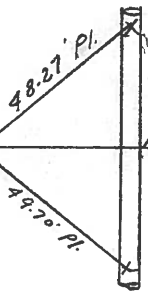


E.S.R. #163

P.I.

447 + 01.60

29.47'



Temp. Rd #6'

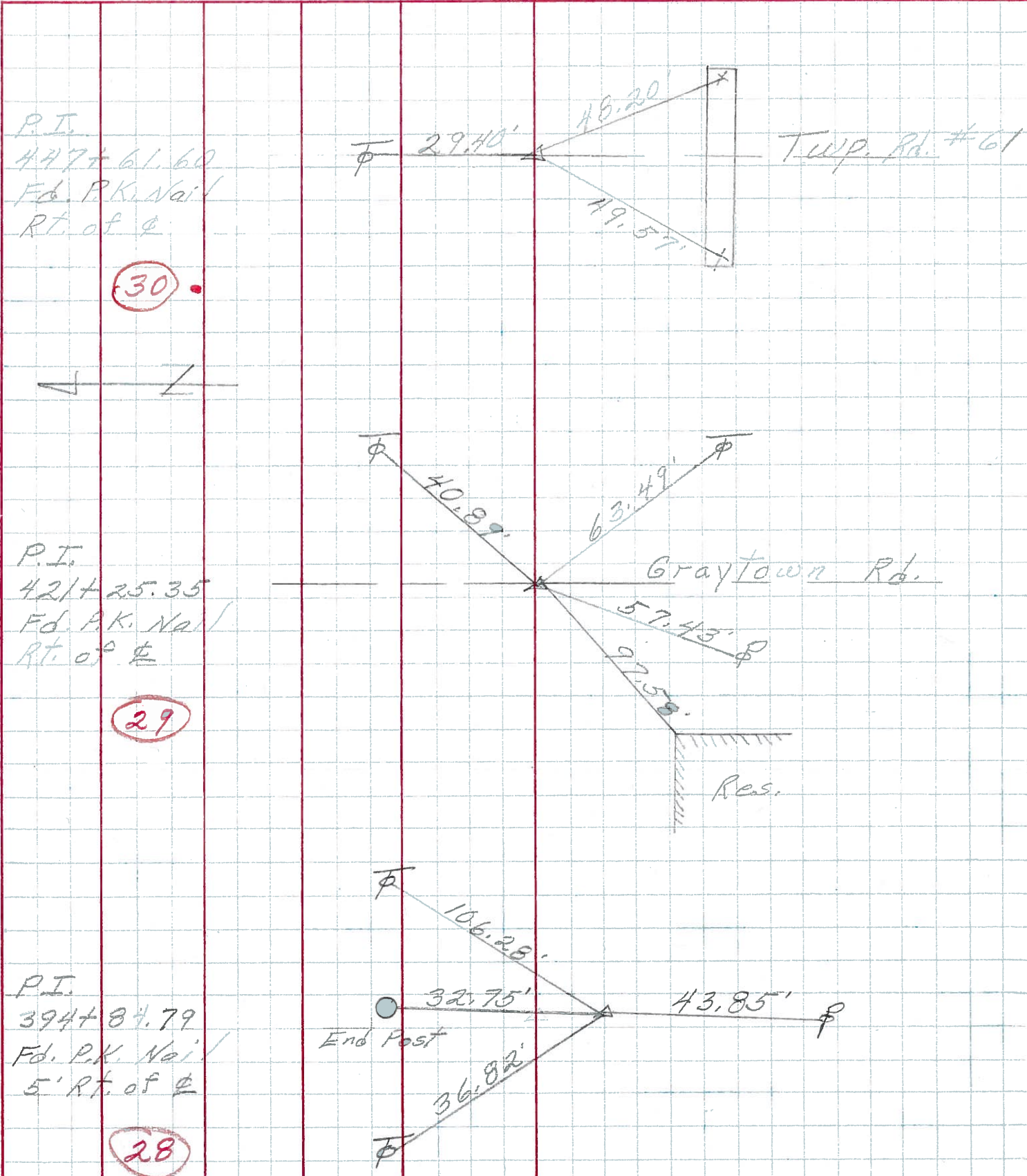
PERSONNEL TITLE PERSONNEL TITLE

COUNTY Ottawa DATE Sept 70

S. R. 163 WEATHER

SEC. 33-32 & 5-4 TEMP.

DESCRIPTION Benton & Harris Twp. JOB NO.



30

29

28

PERSONNEL TITLE PERSONNEL TITLE

COUNTY Ottawa DATE Jan. 1968

S. R. 16.3 WEATHER

SEC. 3.24 TEMP.

DESCRIPTION Control Points JOB NO.

LEFT	CENTER LINE	RIGHT
P.I. 474+00.65 Fd. P.K. Nail 5272 (31)		 Stange Rd. #21
P.I. 447+66.60 Fd. P.K. Nail Rt. of \perp 5271 (30)		 Twp. Rd. #61
P.I. 421+25.35 Fd. P.K. Nail Rt. of \perp 5270 (29)		 Graytown Rd. Res.
P.I. 394+84.79 Fd. P.K. Nail Rt. of \perp 5269 (28)	fence post \circ	

PERSONNEL	TITLE	PERSONNEL	TITLE

COUNTY Ottawa DATE Jan. 1969
 S. R. 163 WEATHER
 SEC. 3.27 TEMP.

DESCRIPTION Ties JOB NO. 02717

