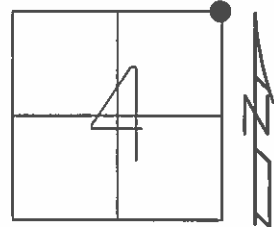


O.D.O.T. DISTRICT 2 SURVEY OFFICE (USE ONLY)

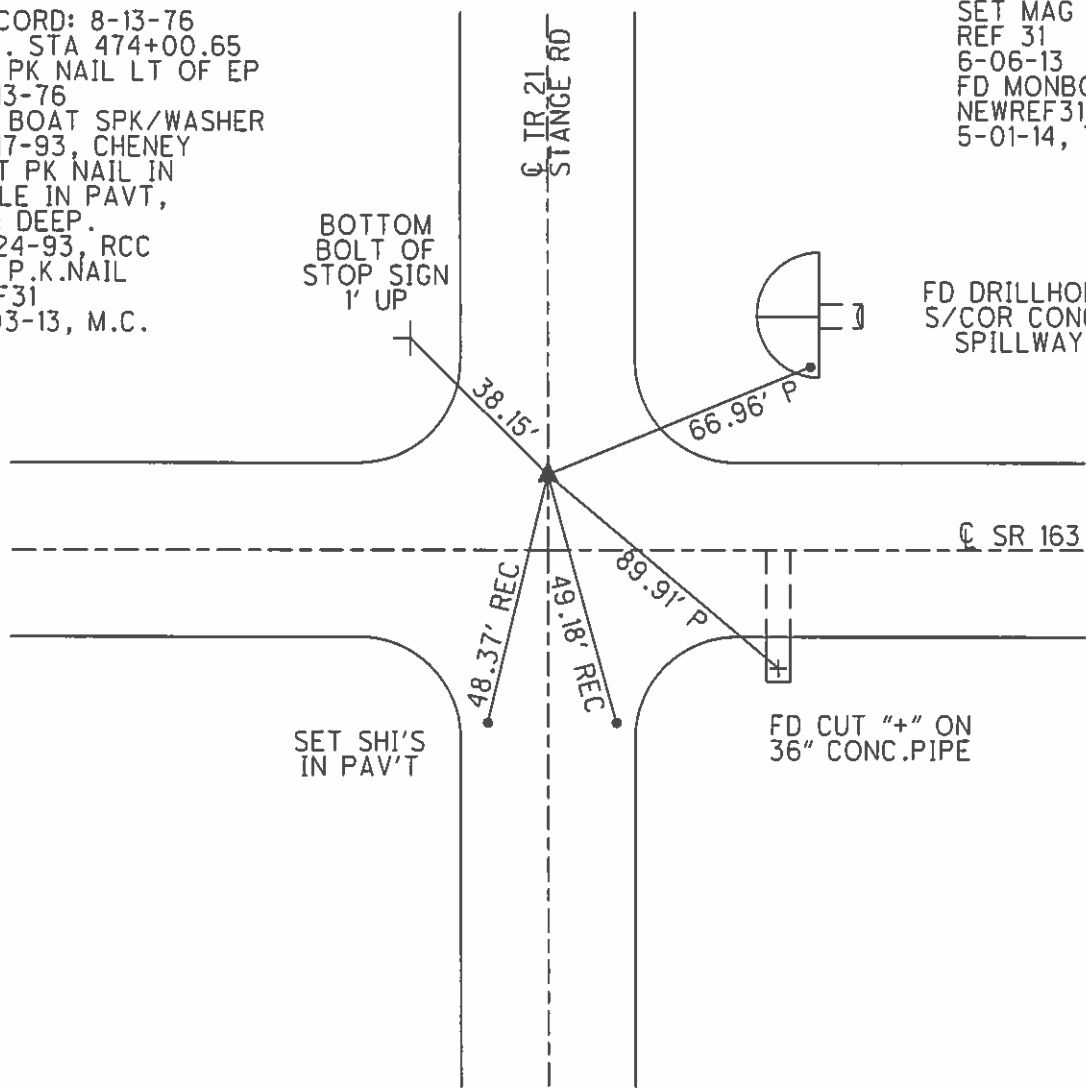
PERSONNEL _____ REFERENCE NO. 31 SHEET 16 OF 20
 NOTES RHOADES DATE 5/15/13 ROUTE SR 163
 H.C. CODER WEATHER WINDY COUNTY OTTAWA
 R.C. ROUSOS TEMP. 78° F TOWNSHIP HARRIS
 _____ SECTION 4
 _____ T 6 N R 14 E

TYPE MONUMENT MAG SPIKE
~~ON SURFACE~~ - BELOW 4.25'
 LEFT - ☉ PAV'T - ~~RIGHT~~ 7.5'
3' TO LT EDGE PAVEMENT
 S.L.M. 474+60
 Grid: Northing: 674775.613 Easting: 1765409.403



RECORD: 8-13-76
 P.I. STA 474+00.65
 FD PK NAIL LT OF EP
 8-13-76
 FD BOAT SPK/WASHER
 6-17-93, CHENEY
 SET PK NAIL IN
 HOLE IN PAVT,
 2"± DEEP.
 9-24-93, RCC
 FD P.K.NAIL
 REF31
 1-03-13, M.C.

SET MAG SPIKE
 REF 31
 6-06-13
 FD MONBOX
 NEWREF31
 5-01-14, TMR



FD DRILLHOLE
 S/COR CONC.
 SPILLWAY

SET SHI'S
 IN PAV'T

FD CUT "+" ON
 36" CONC. PIPE

O.D.O.T. DISTRICT 2 SURVEY OFFICE

PERSONNEL _____

REFERENCE NO. 31

SHEET 12 OF 24

NOTES CHENEY

H.C. RIPPLE

DATE 6-17-1993

ROUTE # 163

R.C. BARBOUR

WEATHER FAIR

COUNTY OTTAWA

TEMP. 80°

TOWNSHIP HARRIS

SECTION 3, 4

T. & R. 14E

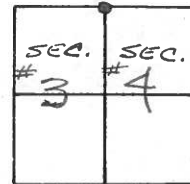
TYPE MONUMENT BOAT SPK/WASHER

~~CONC.~~ SURFACE - BELOW 4.25"

LEFT-~~C~~ PAV'T. - ~~RIGHT~~ 7.5'

3' TO LT. EDGE PAVEMENT

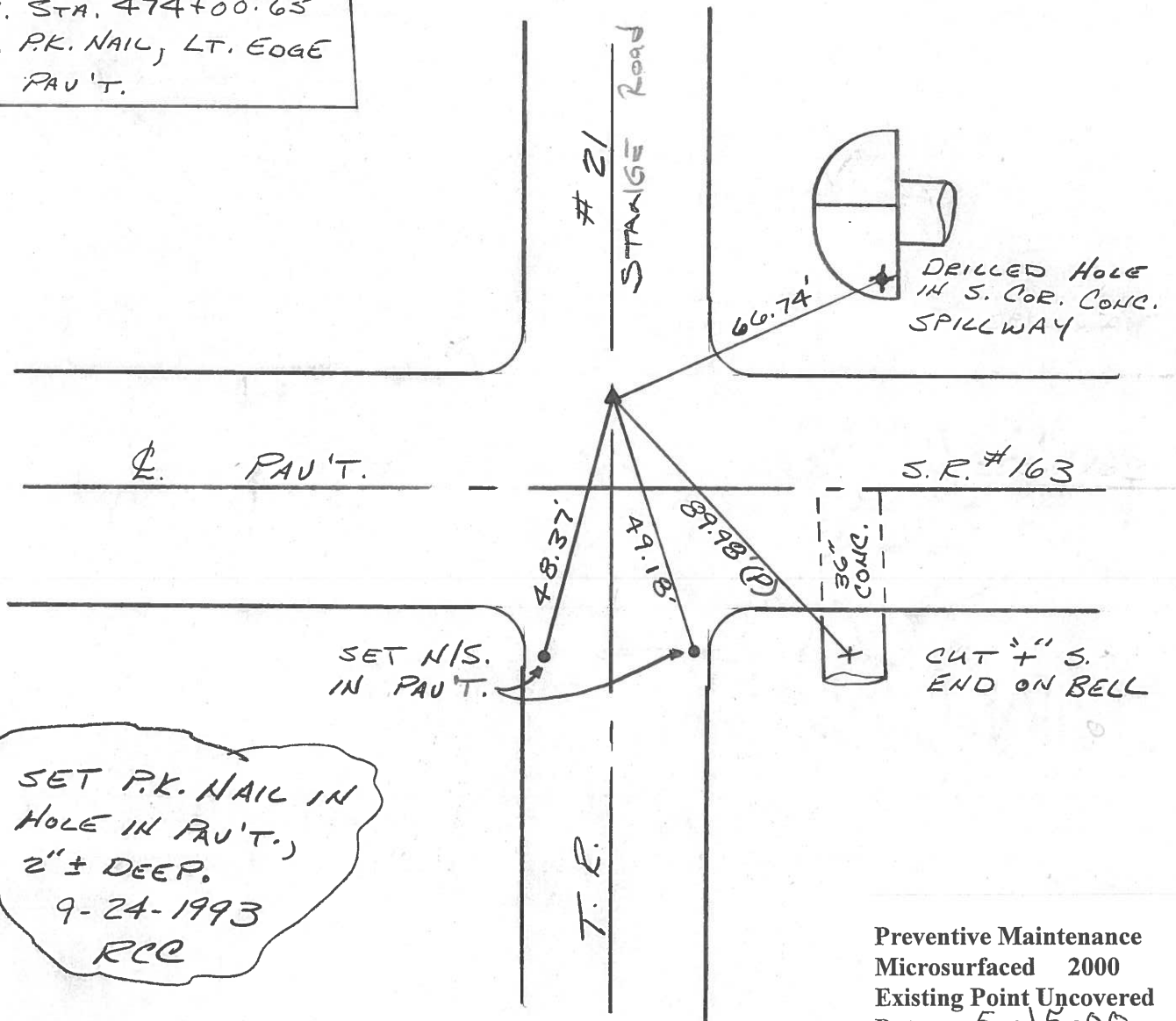
S.L.M. 474+60



RECORD: 8-13-1976

P.I. STA. 474+00.65

FD. P.K. NAIL, LT. EDGE OF PAV'T.



SET P.K. NAIL IN HOLE IN PAV'T.)
 2" ± DEEP.
 9-24-1993
 RCC

Preventive Maintenance
 Microsurfaced 2000
 Existing Point Uncovered
 Date 5-15-00

PERSONNEL TITLE PERSONNEL TITLE

COUNTY Ottawa DATE 8-13-76

S. R. 163 WEATHER Fair

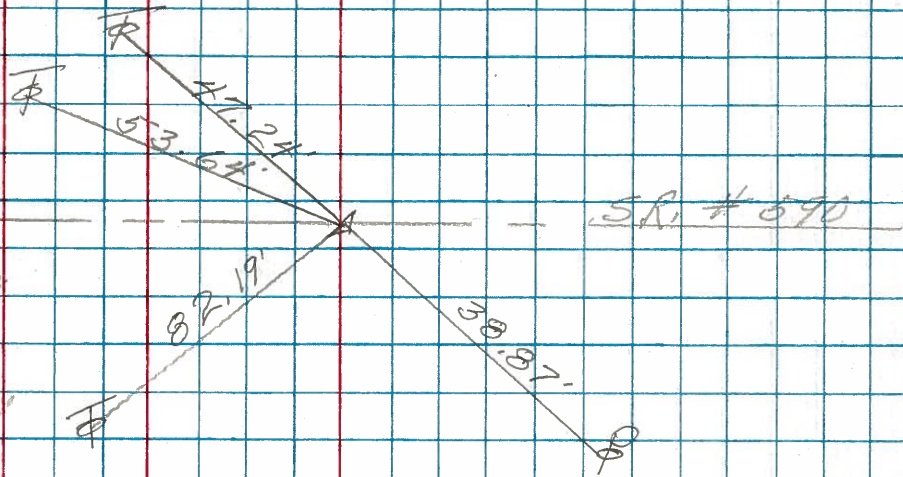
SEC. 34-35 & 2-3 TEMP. 80°

DESCRIPTION Benton & Harris Twp. JOB NO.

LEFT CENTER LINE RIGHT

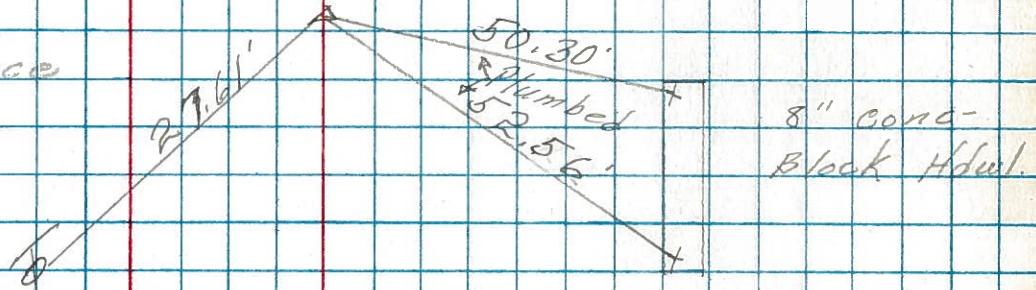
P.I.
526+94.40
Fd. stone
6" below surface
set 3/4" pipe
use P.K. Nail
Reset P.K. Nail

33



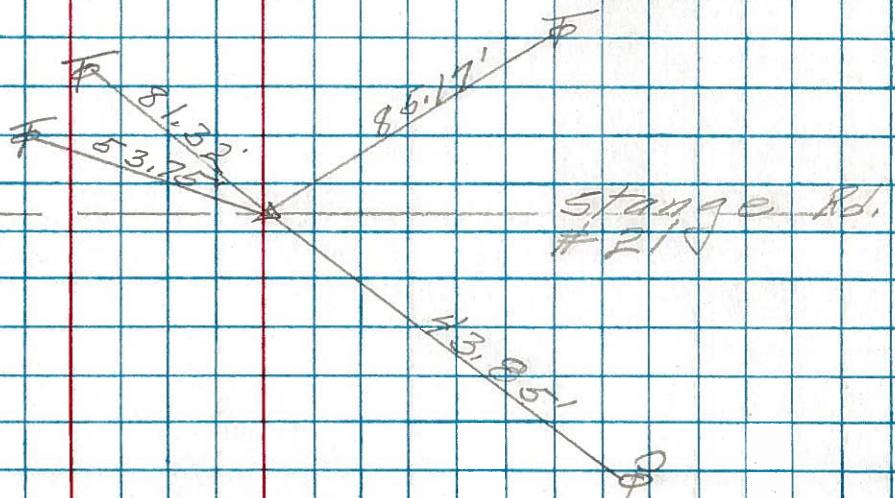
P.I.
500+39.45
Fd. large stone
17" below surface
P.K. Nail 1" down
Reset P.K. Nail

32



P.I.
474+00.65
Fd. P.K. Nail
Lt. edge of Pavmt.

31

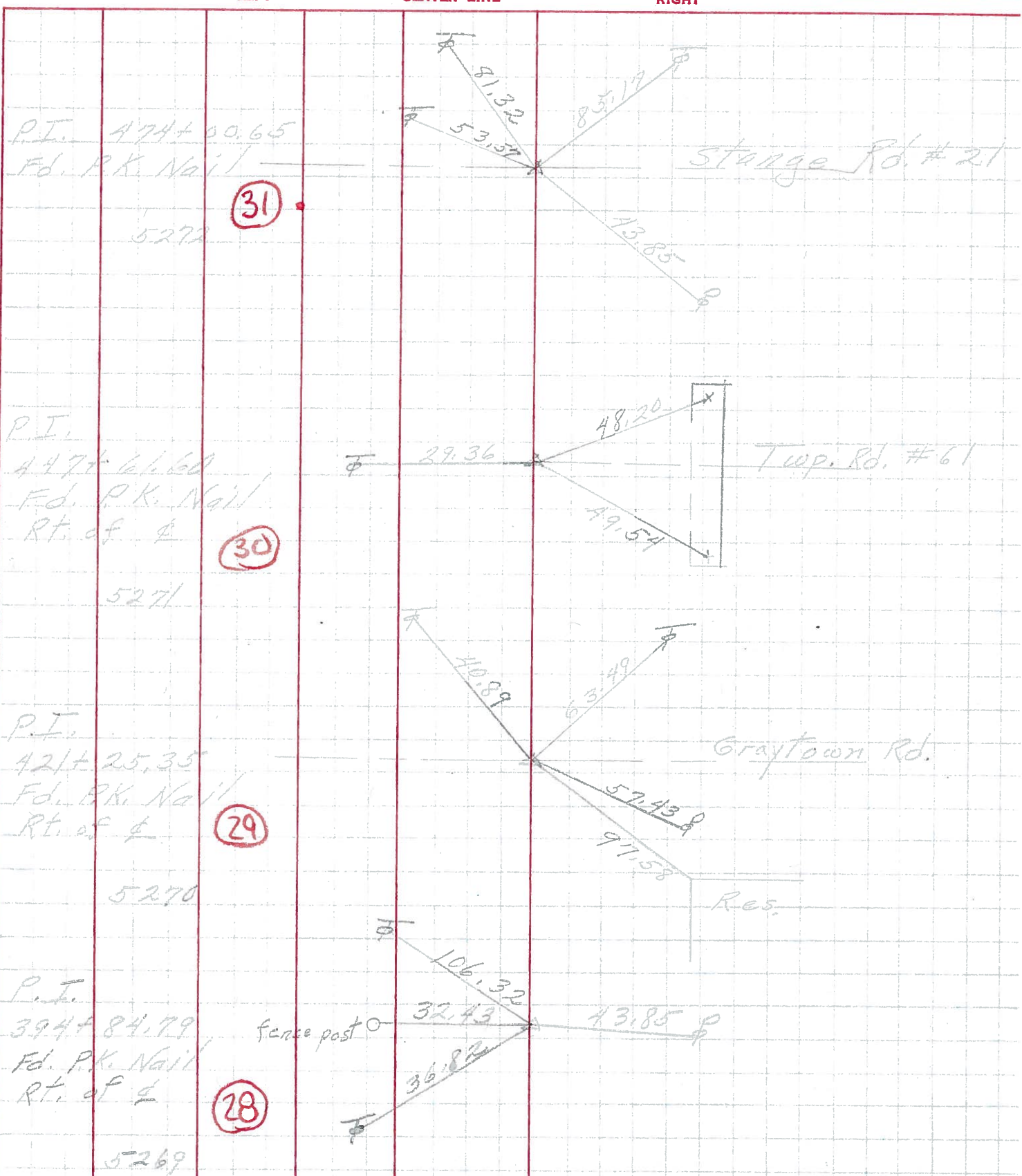


PERSONNEL _____ TITLE _____ PERSONNEL _____ TITLE _____ COUNTY Ottawa DATE Jan. 196

_____ S. R. 163 WEATHER _____

_____ SEC. 3.24 TEMP. _____

DESCRIPTION Control Points JOB NO. _____



PERSONNEL TITLE PERSONNEL TITLE

COUNTY Ottawa DATE 6-28-66

S. R. 163 WEATHER Hot

SEC. 34-35 & 2-3 TEMP. 90°

DESCRIPTION Benton & Harris Twp. JOB NO.

LEFT CENTER LINE RIGHT

