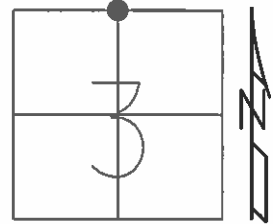


O.D.O.T. DISTRICT 2 SURVEY OFFICE (USE ONLY)

PERSONNEL _____ REFERENCE NO. 32 SHEET 17 OF 20
 NOTES RHOADES DATE 5/15/13 ROUTE SR 163
 H.C. CODER WEATHER WINDY COUNTY OTTAWA
 R.C. ROUSOS TEMP. 78° F TOWNSHIP HARRIS
 _____ SECTION 3
 _____ T 6 N R 14 E

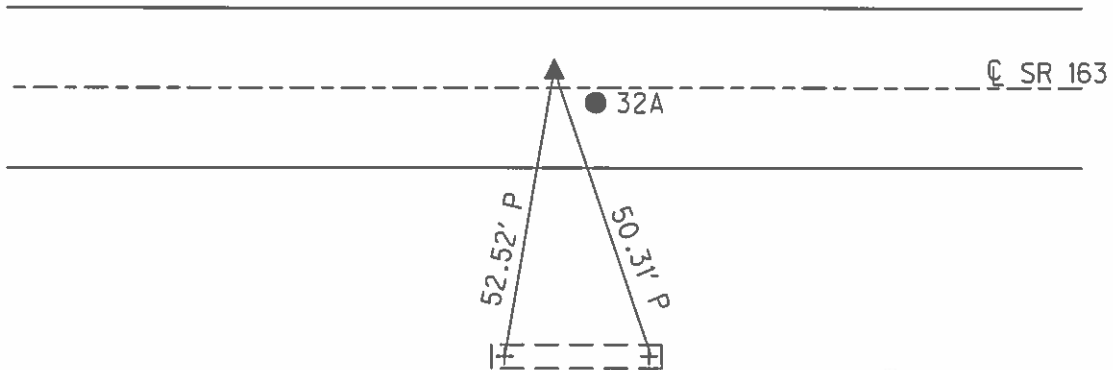
TYPE MONUMENT MAG NAIL
 ON SURFACE - ~~BELOW~~ ON
 LEFT - ☉ PAV'T - ~~RIGHT~~ 0.5'
12' TO RT. EDGE PAVEMENT
 S.L.M. 501+05



Grid: Northing: 674764.515 Easting: 1768048.010

RECORD: P.I.
 STA 500+39.45
 FD PK NAIL 1" DOWN
 FD LARGE STONE 17" DOWN
 SET PK NAIL
 8-13-76
 FD RSPK W/ "X"
 6-17-93, CHENEY
 SET PK/WASHER
 9-27-93, RCC
 FD PK/WASHER
 REF32
 1-3-12, M.C.
 SET MAG/WASHER
 NEWREF32
 5-01-14, TMR

DIST. 32-32A = 0.52'



FD DRILLED HOLE IN CTR.
 OF OLD "+S" FD IN
 8" WIDE CONC. BLOCK HDWL

O.D.O.T. DISTRICT 2 SURVEY OFFICE

PERSONNEL

REFERENCE NO. 32

SHEET 13 OF 24

NOTES CHENEY

H.C. RIPPLE

R.C. BARBOUR

DATE 6-17-1993

WEATHER FAIR

TEMP. 80°

ROUTE #163

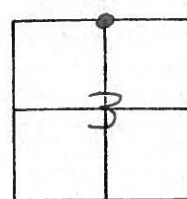
COUNTY OTTAWA

TOWNSHIP HARRIS

SECTION 4

T6 N R 14 E

TYPE MONUMENT R.R. SPK. WITH 4"
 ON SURFACE - ~~BELOW~~ ON
 LEFT-C. PAV'T. - ~~RIGHT~~ 0.5'
12' TO RT. EDGE PAVEMENT
 S.L.M. 501+05



RECORD: 8-13-1976

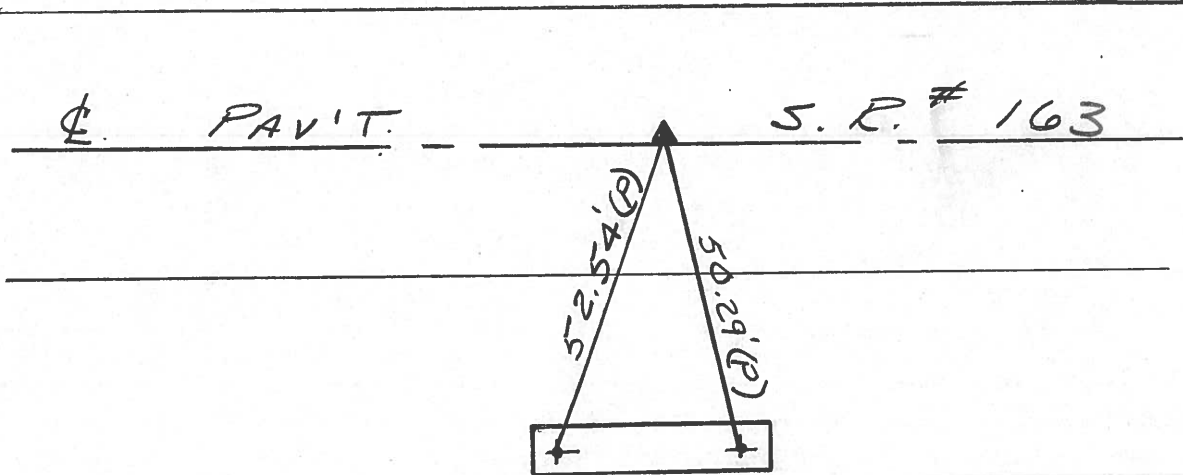
P.I. STA. 500+39.45

FO. P.K. NAIL 1" DOWN

FO. LARGE STONE 17" DOWN

RESET P.K. NAIL

SET PK/WASHER
 9-27-1993
 RCC



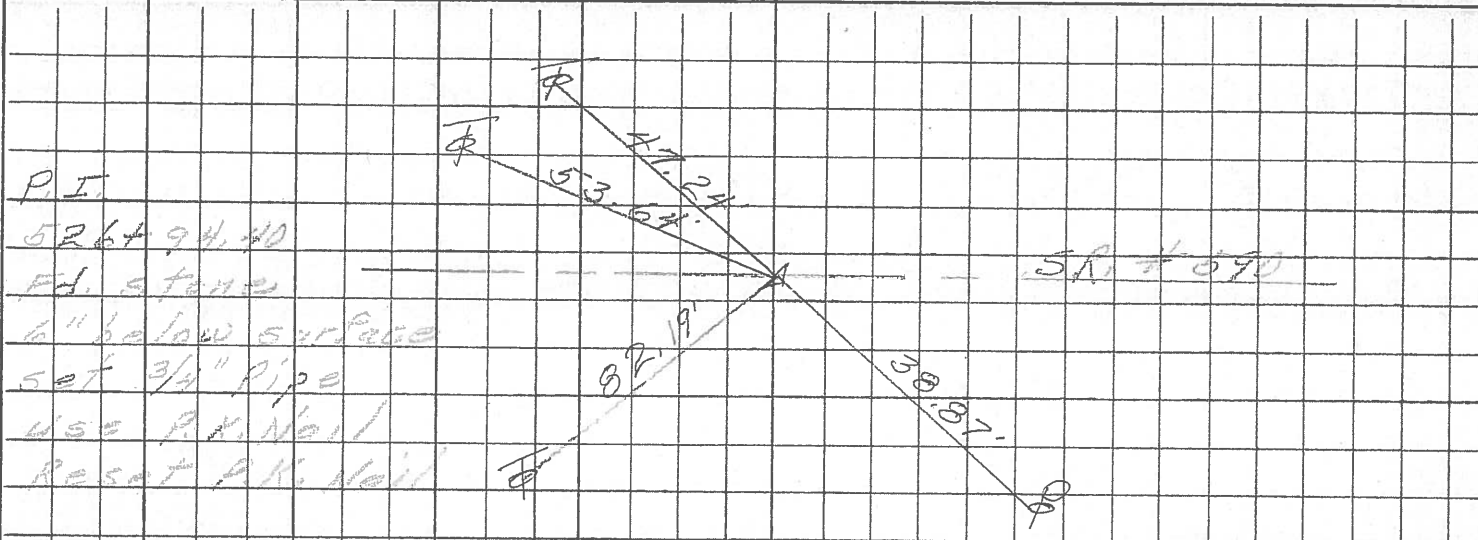
DRILLED HOLE IN CTR.
 OF OLD "4'S" FO. IN
 8" WIDE CONC. BLOCK HDWL.

Preventive Maintenance
 Microsurfaced 2000
 Existing Point Uncovered
 Date 5-15-00

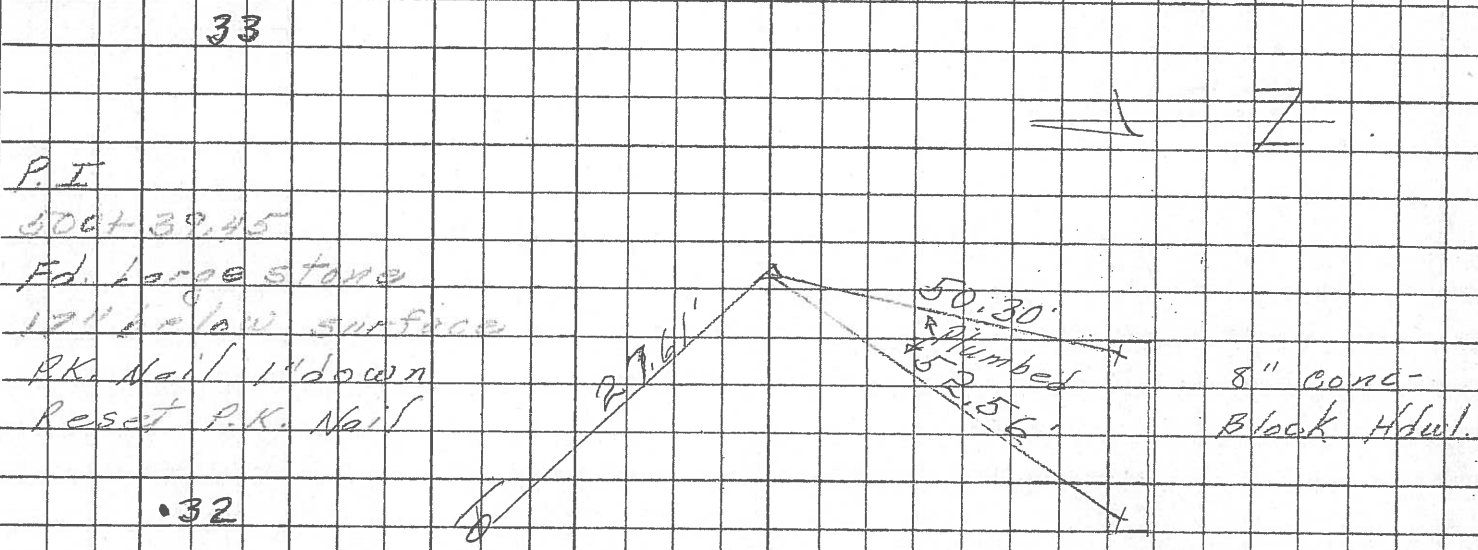
PERSONNEL	TITLE	PERSONNEL	TITLE

COUNTY Ottawa DATE 8-13-76
 S. R. 163 WEATHER Fair
 SEC. 34-35 & 2-3 TEMP. 80°

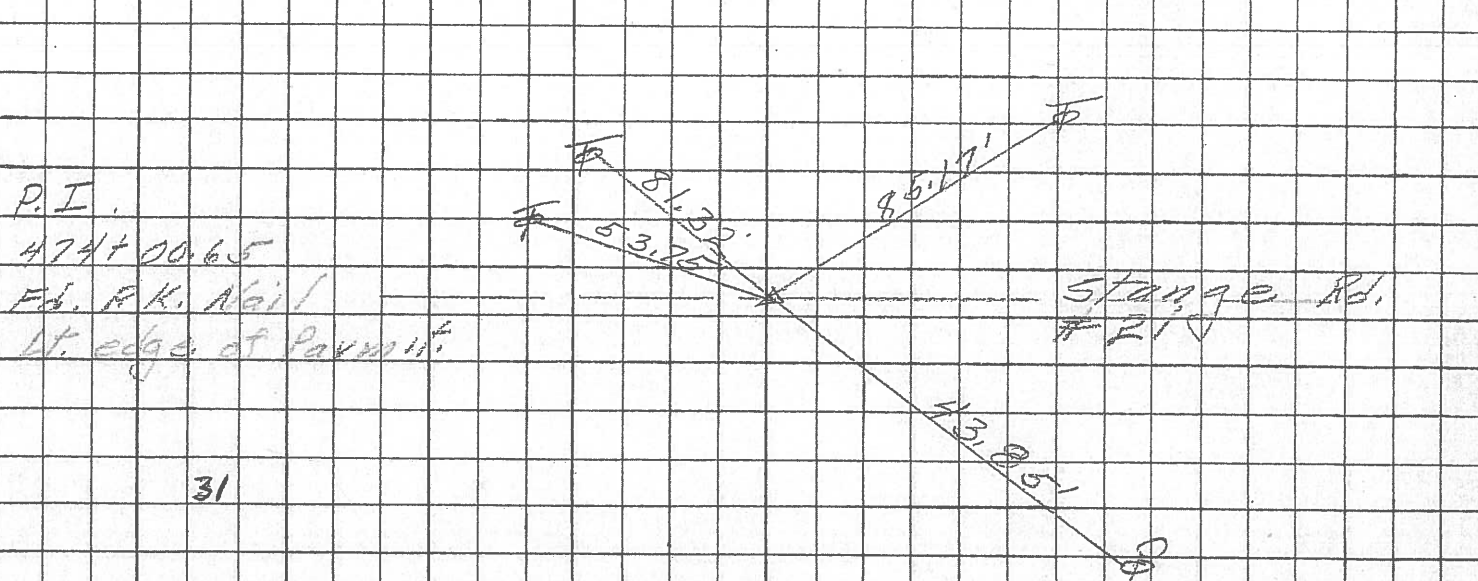
DESCRIPTION Benton & Harris Twp. JOB NO. _____
 LEFT CENTER LINE RIGHT



33



32

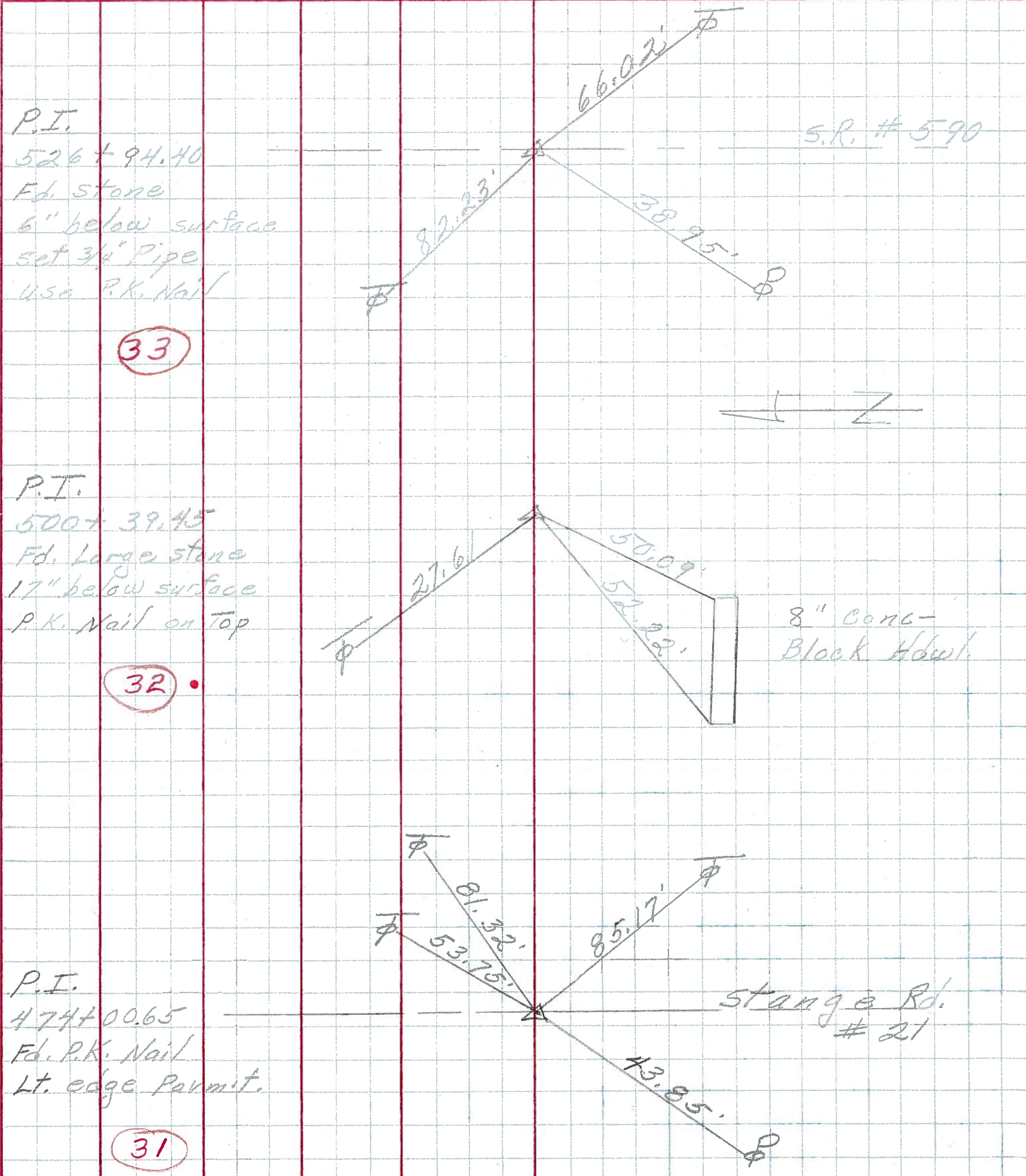


31

PERSONNEL	TITLE	PERSONNEL	TITLE

COUNTY Ottawa DATE 6-28-66
 S. R. 163 WEATHER Hot
 SEC. 34-35 & 2-3 TEMP. 90°

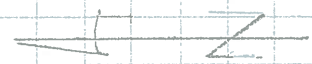
DESCRIPTION Benton & Harris Twp. JOB NO. _____
 LEFT CENTER LINE RIGHT



P.I.
 526 + 94.40
 Fd. stone
 6" below surface
 set 3/4" Pipe
 use P.K. Nail

33

S.R. # 590



P.I.
 500 + 39.45
 Fd. Large stone
 17" below surface
 P.K. Nail on Top

32

8" Conc-Block Abut.

P.I.
 474 + 00.65
 Fd. P.K. Nail
 Lt. edge Permit.

31

Stange Rd. # 21

PERSONNEL TITLE PERSONNEL TITLE

COUNTY Stowa DATE 6-28-66

S. R. 163 WEATHER Hot

SEC. 9.98 TEMP. 90°

DESCRIPTION Control Points JOB NO. _____

