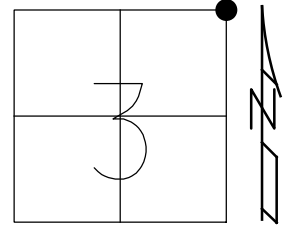


O.D.O.T. DISTRICT 2 SURVEY OFFICE (USE ONLY)

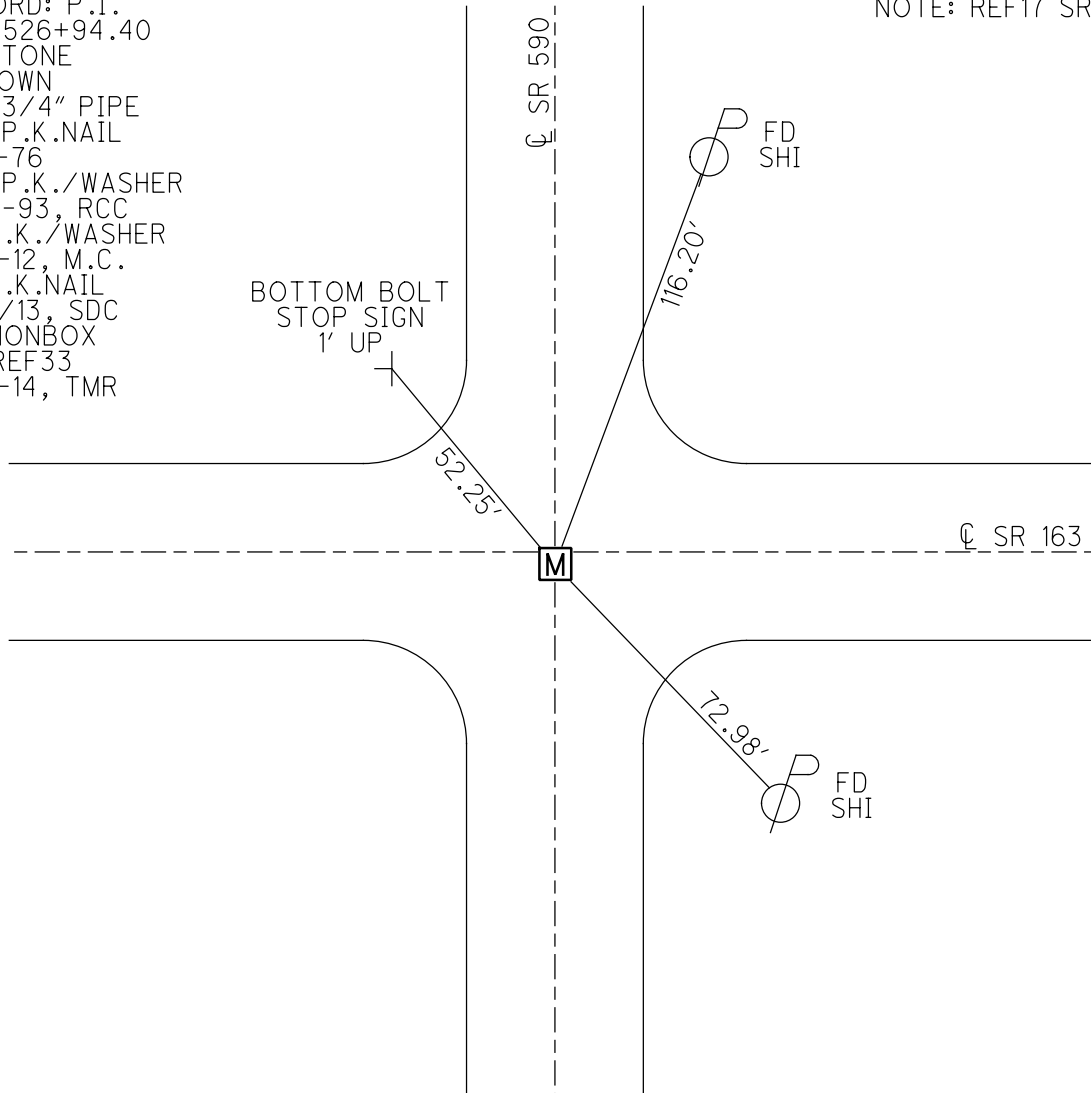
PERSONNEL \_\_\_\_\_ REFERENCE NO. 33 SHEET 19 OF 20  
 NOTES RHOADES DATE 5/15/13 ROUTE SR 163  
 H.C. CODER WEATHER WINDY COUNTY OTTAWA  
 R.C. ROUSOS TEMP. 78° F TOWNSHIP HARRIS  
 \_\_\_\_\_ SECTION 3  
 \_\_\_\_\_ T 6 N R 14 E

TYPE MONUMENT MONBOX  
 ON SURFACE - ~~BELOW~~ ON  
~~LEFT~~ - ℄ PAV'T - RIGHT 0.5'  
12' TO RT EDGE PAVEMENT  
 S.L.M. 527+68  
 Grid: Northing: 674743.840 Easting: 1770702.899



RECORD: P.I.  
 STA 526+94.40  
 FD STONE  
 6" DOWN  
 SET 3/4" PIPE  
 SET P.K.NAIL  
 8-13-76  
 SET P.K./WASHER  
 9-27-93, RCC  
 FD P.K./WASHER  
 1-03-12, M.C.  
 FD P.K.NAIL  
 5/15/13, SDC  
 FD MONBOX  
 NEWREF33  
 5-01-14, TMR

NOTE: REF17 SR 590



# O.D.O.T. DISTRICT 2 SURVEY OFFICE

PERSONNEL

REFERENCE NO. 33

SHEET 14 OF 24

NOTES CHENEY

H.C. RIPPLE

R.C. SARBOUR

DATE 6-17-1993

WEATHER FAIR

TEMP. 80°

ROUTE # 163

COUNTY OTAWA

TOWNSHIP HARRIS

SECTION 3, 2

T & N R 14E

TYPE MONUMENT P.K. NAIL

ON SURFACE - BELOW ONT

~~12'~~ - 6' PAV'T. - RIGHT 0.5'

12' TO RT. EDGE PAVEMENT

S.L.M. 527+68

SEC.	SEC.
3	2



RECORD: 8-13-1976

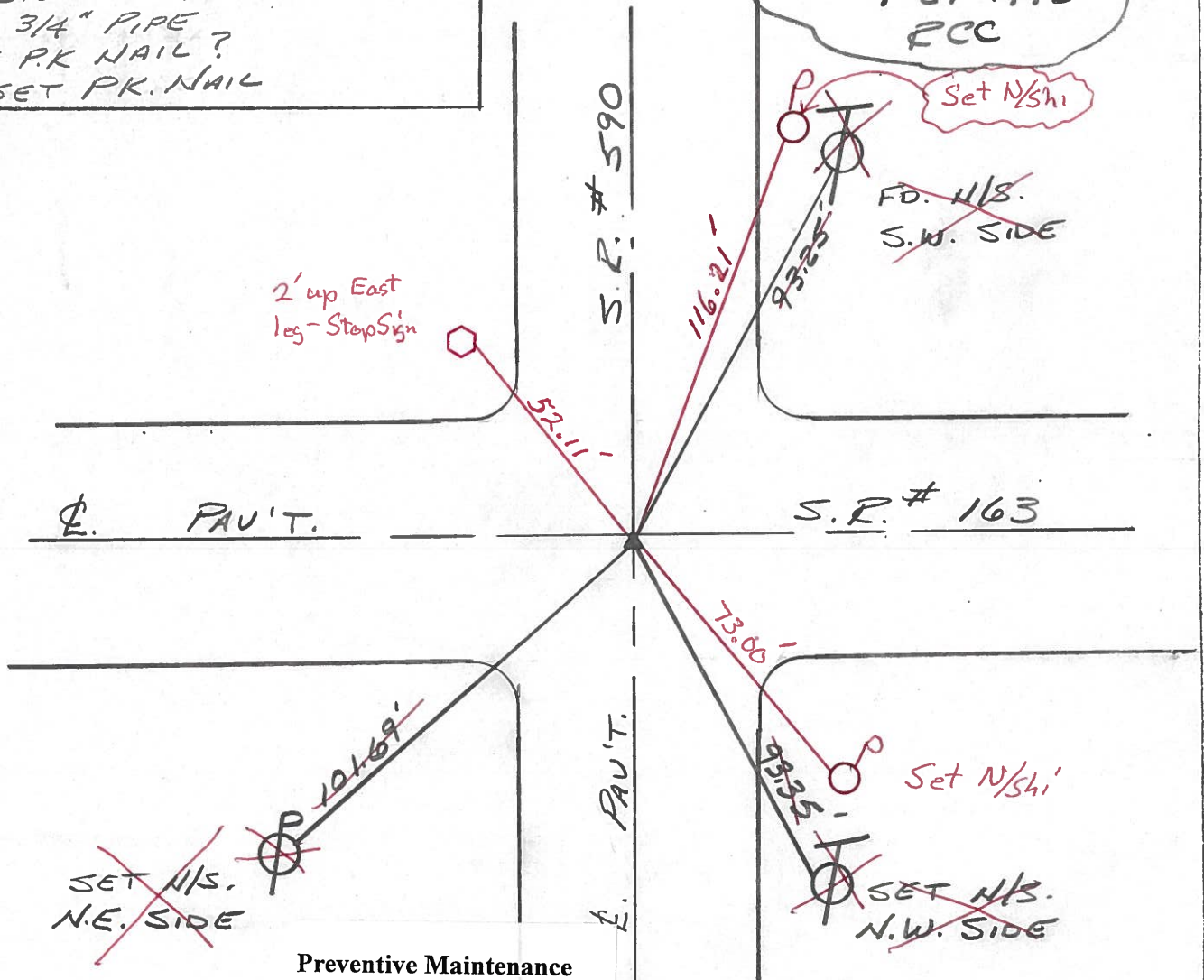
P.I. STA. 526+94.40

FD. STONE 6" BELOW SURFACE

SET 3/4" PIPE

USE P.K. NAIL?

RESET P.K. NAIL



Preventive Maintenance  
 Microsurfaced 2000  
 Existing Point Uncovered  
 Date 5-15-00

PERSONNEL TITLE PERSONNEL TITLE

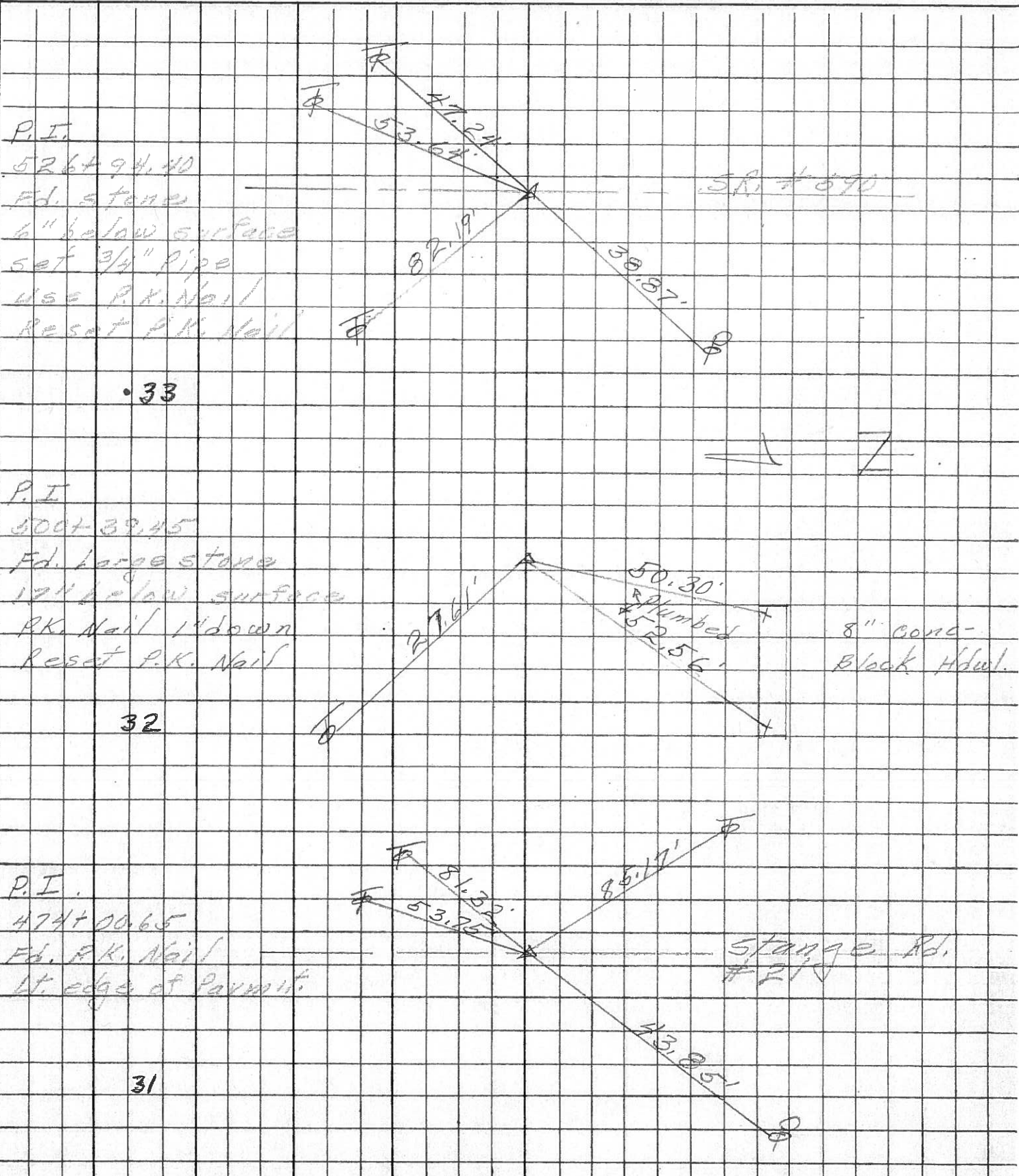
COUNTY Stawa DATE 8-13-76

S. R. 163 WEATHER Fair

SEC. 34-35 & 2-3 TEMP. 80'

DESCRIPTION Benton & Harris Twp. JOB NO.

LEFT CENTER LINE RIGHT



PERSONNEL TITLE PERSONNEL TITLE

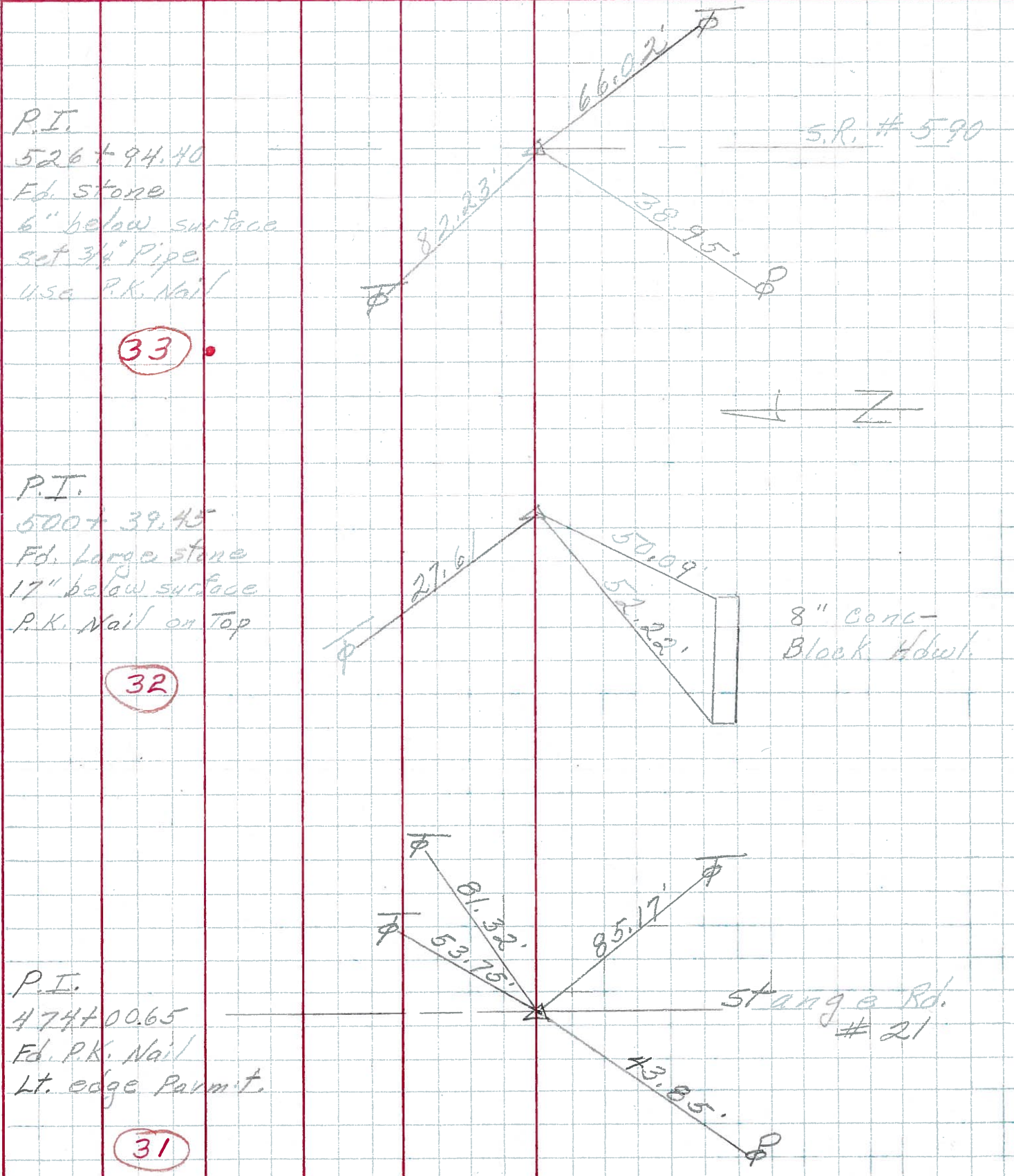
COUNTY Ottawa DATE 6-28-66

S. R. 163 WEATHER Hot

SEC. 34-35 & 2-3 TEMP. 90°

DESCRIPTION Benton & Harris Twp. JOB NO.

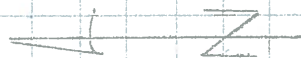
LEFT CENTER LINE RIGHT



P.I.  
 526 + 94.40  
 Fd. stone  
 6" below surface  
 set 3/4" Pipe  
 use P.K. Nail

33

S.R. # 590



P.I.  
 500 + 39.45  
 Fd. Large stone  
 17" below surface  
 P.K. Nail on Top

32

8" Conc-Block Adv.

P.I.  
 474 + 00.65  
 Fd. P.K. Nail  
 Lt. edge Perm. t.

31

Stange Rd. # 21



PERSONNEL TITLE PERSONNEL TITLE

COUNTY Stawa DATE 6-28-66

S. R. 163 WEATHER Hot

SEC. 9.98 TEMP. 90°

DESCRIPTION Control Points JOB NO.

