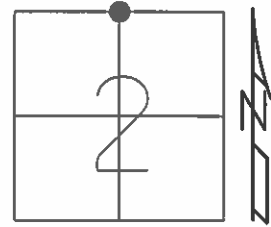


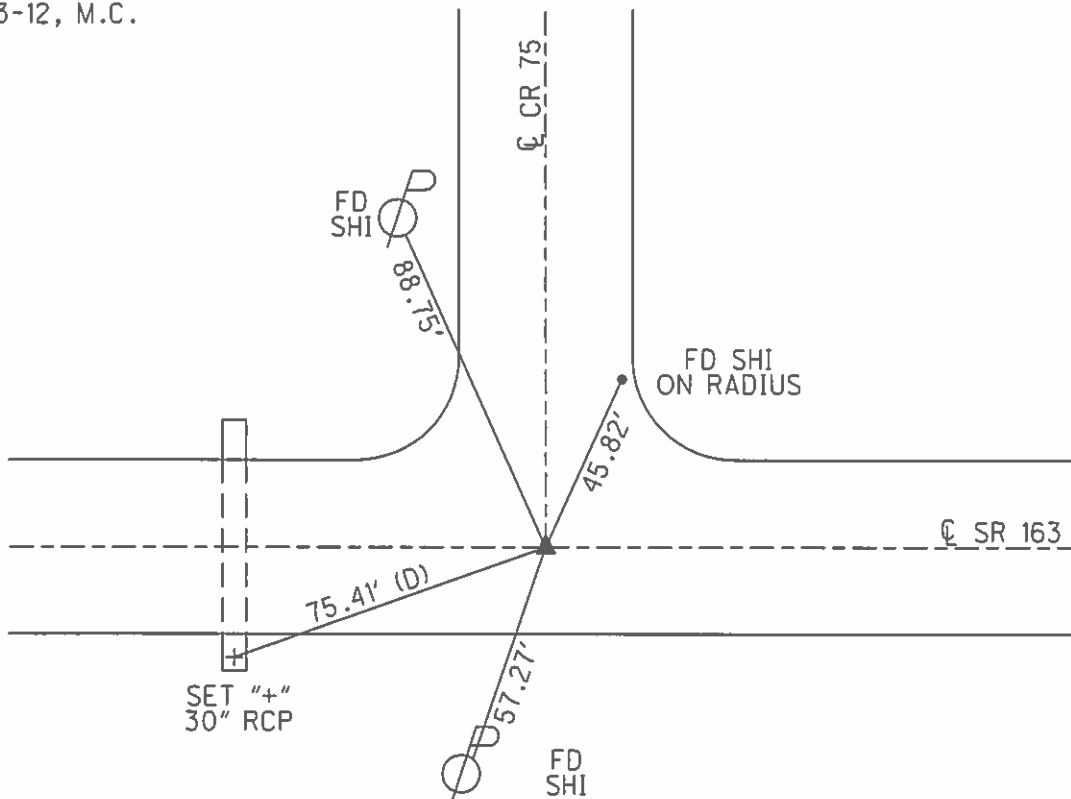
O.D.O.T. DISTRICT 2 SURVEY OFFICE (USE ONLY)

PERSONNEL _____ REFERENCE NO. 34 SHEET 20 OF 20
 NOTES RHOADES DATE 5/15/13 ROUTE SR 163
 H.C. CODER WEATHER WINDY COUNTY OTTAWA
 R.C. ROUSOS TEMP. 78° F TOWNSHIP HARRIS
 _____ SECTION 2
 _____ T 6 N R 14 E

TYPE MONUMENT P.K./WASHER
 ON SURFACE - ~~BELOW~~ ON
~~LEFT~~ - CL PAV'T - ~~RIGHT~~ ON
11.5' TO RT EDGE PAVEMENT
 S.L.M. 554+14
 Grid: Northing: 674746.3502 Easting: 1773343.4152



RECORD: P.I.
 STA 553+33.17
 COUNTY FOUND STONE
 PK NAIL ON SURFACE
 SET PK NAIL
 11-13-76
 SET PK/WASHER
 9-27-93, RCC
 FD PK/WASHER
 REF34
 1-03-12, M.C.



O.D.O.T. DISTRICT 2 SURVEY OFFICE

PERSONNEL

REFERENCE NO. 34

SHEET 15 OF 24

NOTES CHENEY

H.C. RIPPLE

R.C. BARBOUR

DATE 6-17-1993

WEATHER FAIR

TEMP. 80°

ROUTE #163

COUNTY OTTAWA

TOWNSHIP HAERIS

SECTION 2

T. 6N R. 14E

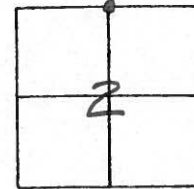
TYPE MONUMENT 1" ROD IN CONC.

~~ON~~ SURFACE - BELOW 7"

~~LEFT~~ - E PAV'T. - ~~RIGHT~~ ON

11.5' TO RT. EDGE PAVEMENT

S.L.M. 554+14



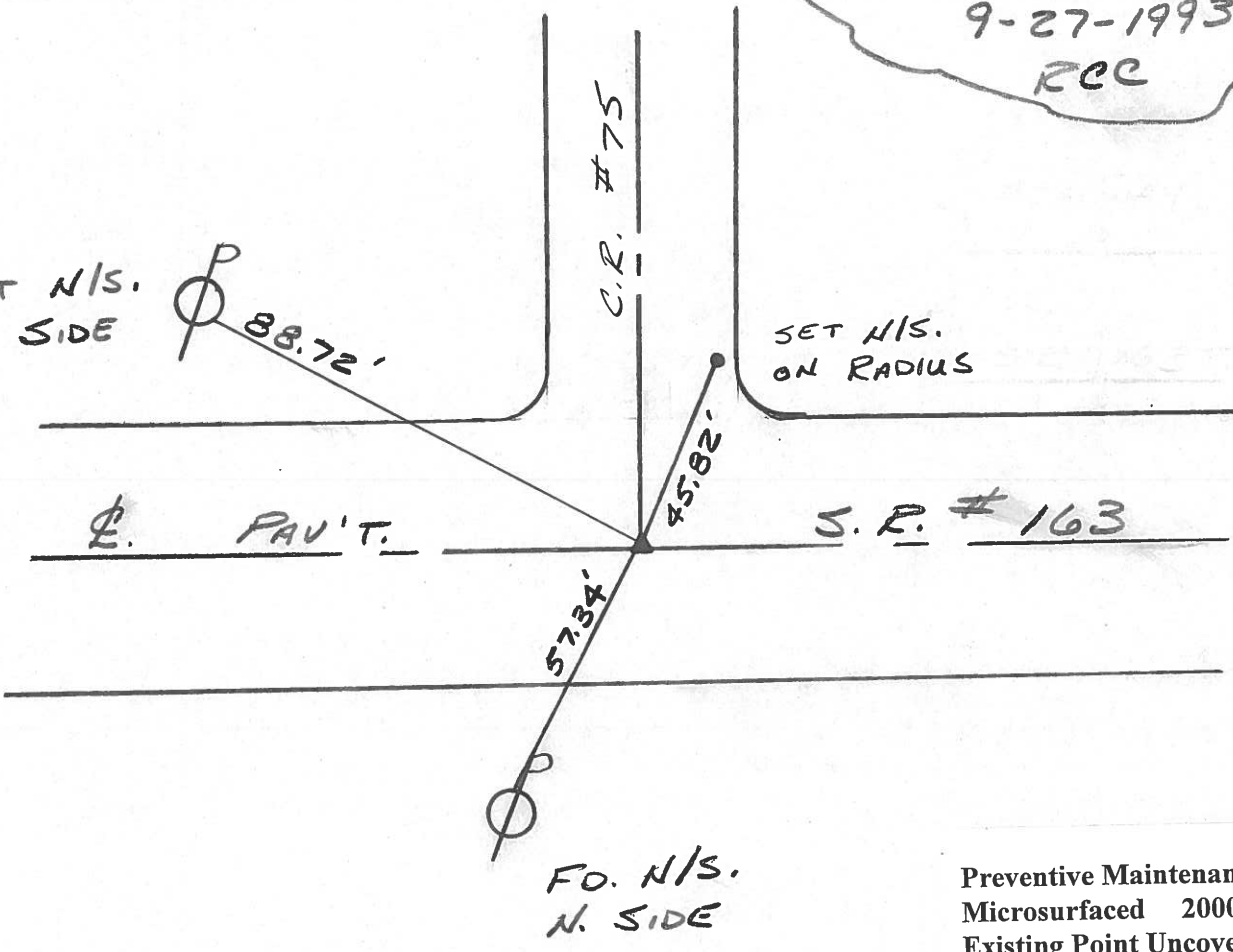
RECORD: 11-13-1976
 P.I. STA. 553+33.17
 COUNTY FOUND STONE
 P.K. NAIL ON SURFACE
 RESET P.K. NAIL

SET. PK/WASHER
 9-27-1993
 REC

SET N/S.
 S.E. SIDE

88.72'

SET N/S.
 ON RADIUS



Preventive Maintenance
 Microsurfaced 2000
 Existing Point Uncovered
 Date 5-15-00

PERSONNEL TITLE PERSONNEL TITLE

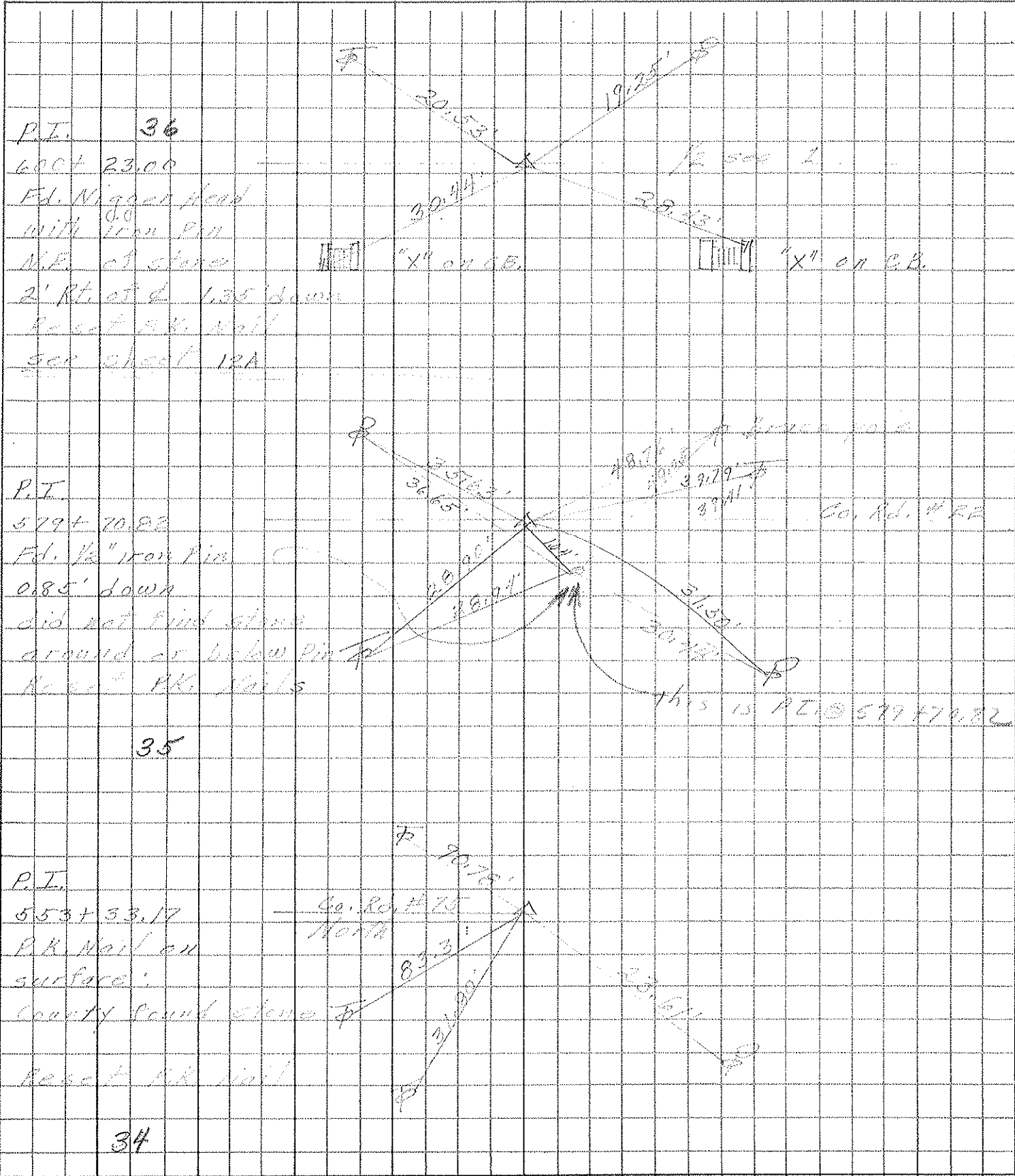
COUNTY Okmulgee DATE 11-13-76

S. R. 13 WEATHER Fair

SEC. 35-36 E 1 R TEMP. 80°

DESCRIPTION Benton of Vicksburg JOB NO.

LEFT CENTER LINE RIGHT



P.I. 36
 600+ 23.00
 Fd. Nigger Head
 with iron pin
 N.E. of stone
 2' Rt. of d. 1.35 down
 Rec'd P.K. Nail
 see sheet 12A

P.I.
 579+ 70.82
 Fd. 1/2" iron pin
 0.85' down
 did not find stone
 around or below pin
 Rec'd P.K. Nails

P.I.
 553+ 33.17
 P.K. Nail on
 surface
 County found stone
 Rec'd P.K. Nail

35

34

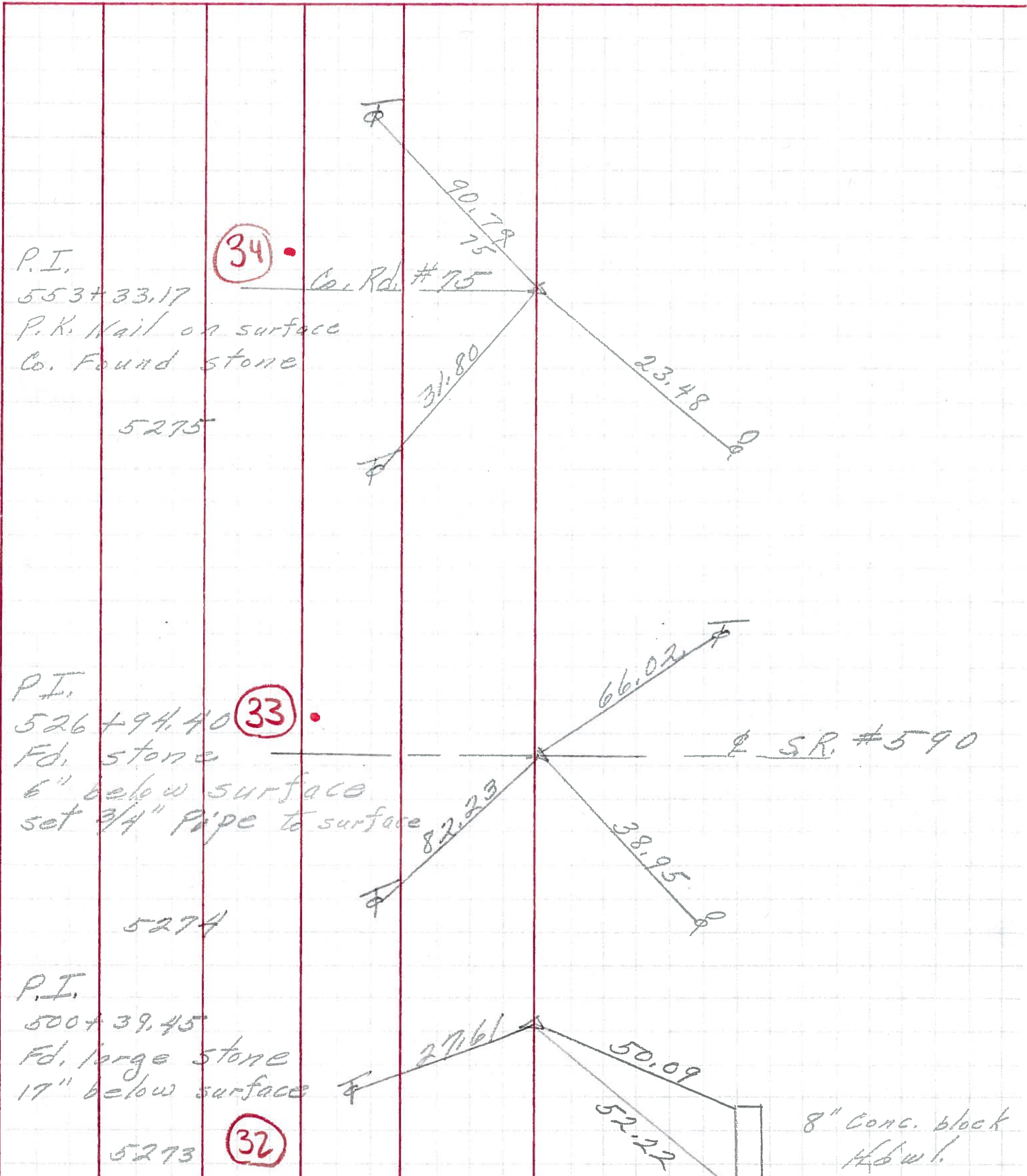
PERSONNEL TITLE PERSONNEL TITLE

COUNTY Starna DATE 6-28-66

S. R. 163 WEATHER Hot

SEC. 9.98 TEMP. 90°

DESCRIPTION Control Points JOB NO.



PERSONNEL TITLE PERSONNEL TITLE

COUNTY Ottawa DATE 3-3-66

S. R. 163 WEATHER Fair

SEC. 35-36 & 1-2 TEMP. 60°

DESCRIPTION Benton & Harris Twp. JOB NO.

