

O.D.O.T. DISTRICT 2 SURVEY OFFICE (USE ONLY)

PERSONNEL \_\_\_\_\_

REFERENCE NO. 37

SHEET 6 OF 17

NOTES CHENEY

DATE 6/17/93

ROUTE SR 163

H.C. RIPPLE

WEATHER FAIR

COUNTY OTTAWA

R.C. BARBOUR

TEMP. 80°

TOWNSHIP HARRIS

SECTION 1

DWG BY NIESE PID \_\_\_\_\_

T 6 N R 14 E

TYPE MONUMENT P.K./WASHER

ON SURFACE - ~~BELOW~~ 3"

OFFSET Q PAVEMENT ON LT : RT

12.0' TO LT EDGE PAVEMENT

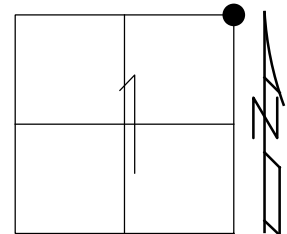
STATION: 633+70

HORZ. DATUM: \_\_\_\_\_

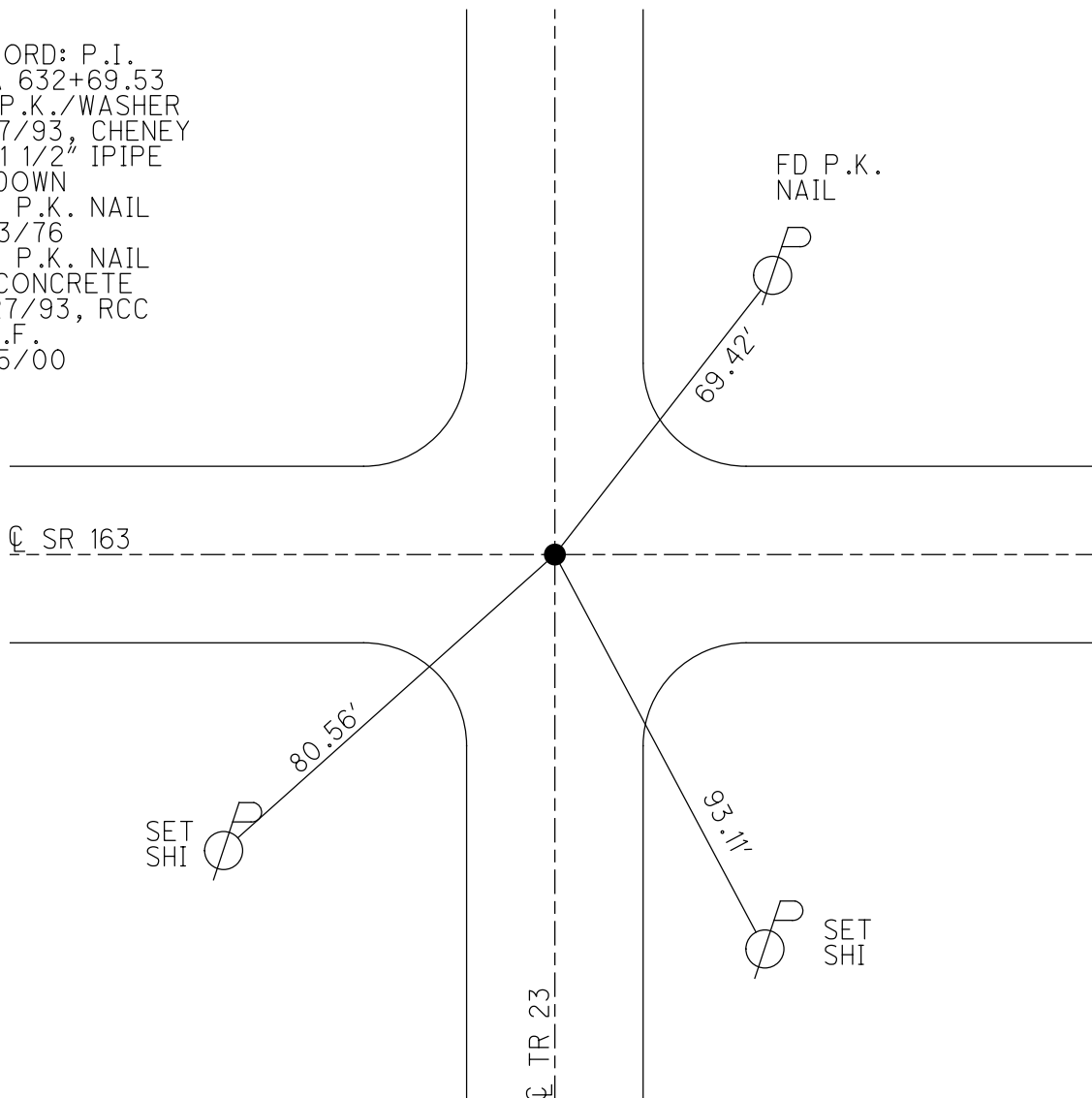
GEOID: \_\_\_\_\_

GRID: NORTHING: \_\_\_\_\_

EASTING: \_\_\_\_\_



RECORD: P.I.  
 STA 632+69.53  
 FD P.K./WASHER  
 6/17/93, CHENEY  
 FD 1 1/2" IPIPE  
 5" DOWN  
 SET P.K. NAIL  
 8/13/76  
 SET P.K. NAIL  
 IN CONCRETE  
 9/27/93, RCC  
 D.N.F.  
 5/15/00



# O.D.O.T. DISTRICT 2 SURVEY OFFICE

PERSONNEL

REFERENCE NO. 37

SHEET 18 OF 24

NOTES CHENEY

H.C. RIPPLE

R.C. BARBOUR

DATE 6-17-1993

WEATHER FAIR

TEMP. 80°

ROUTE #163

COUNTY OTTAWA

TOWNSHIP \_\_\_\_\_

SECTION \_\_\_\_\_

T \_\_\_\_\_ R \_\_\_\_\_

TYPE MONUMENT PK/WASHER

~~ON~~ SURFACE - BELOW 3"

~~LEFT~~ - C. PAV'T. - RIGHT ON

12' TO LT. EDGE PAVEMENT

S.L.M. 633170

BENTON 36	SALEM 31
HARRIS 1	SALEM 6

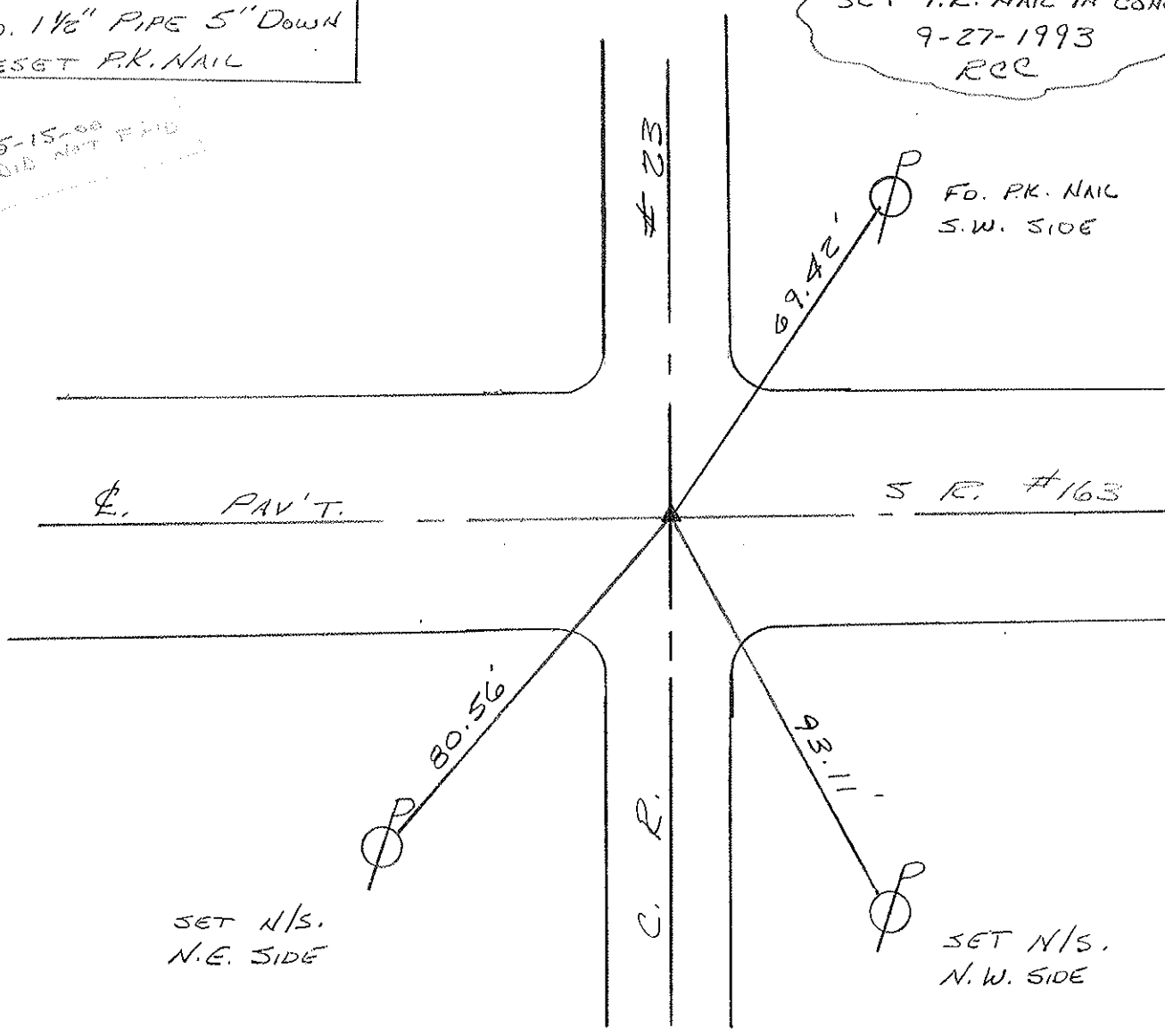


RECORD: 8-13-1976

P.I. STA. 632469.53  
 FO. 1 1/2" PIPE 5" DOWN  
 RESET P.K. NAIL

5-15-00  
 DID NOT FIND

SET P.K. NAIL IN CONC.  
 9-27-1993  
 RCC



PAV'T.

# 23

C. R.

S.E. #163

SET N/S.  
N.E. SIDE

SET N/S.  
N.W. SIDE

FO. P.K. NAIL  
S.W. SIDE

PERSONNEL TITLE PERSONNEL TITLE

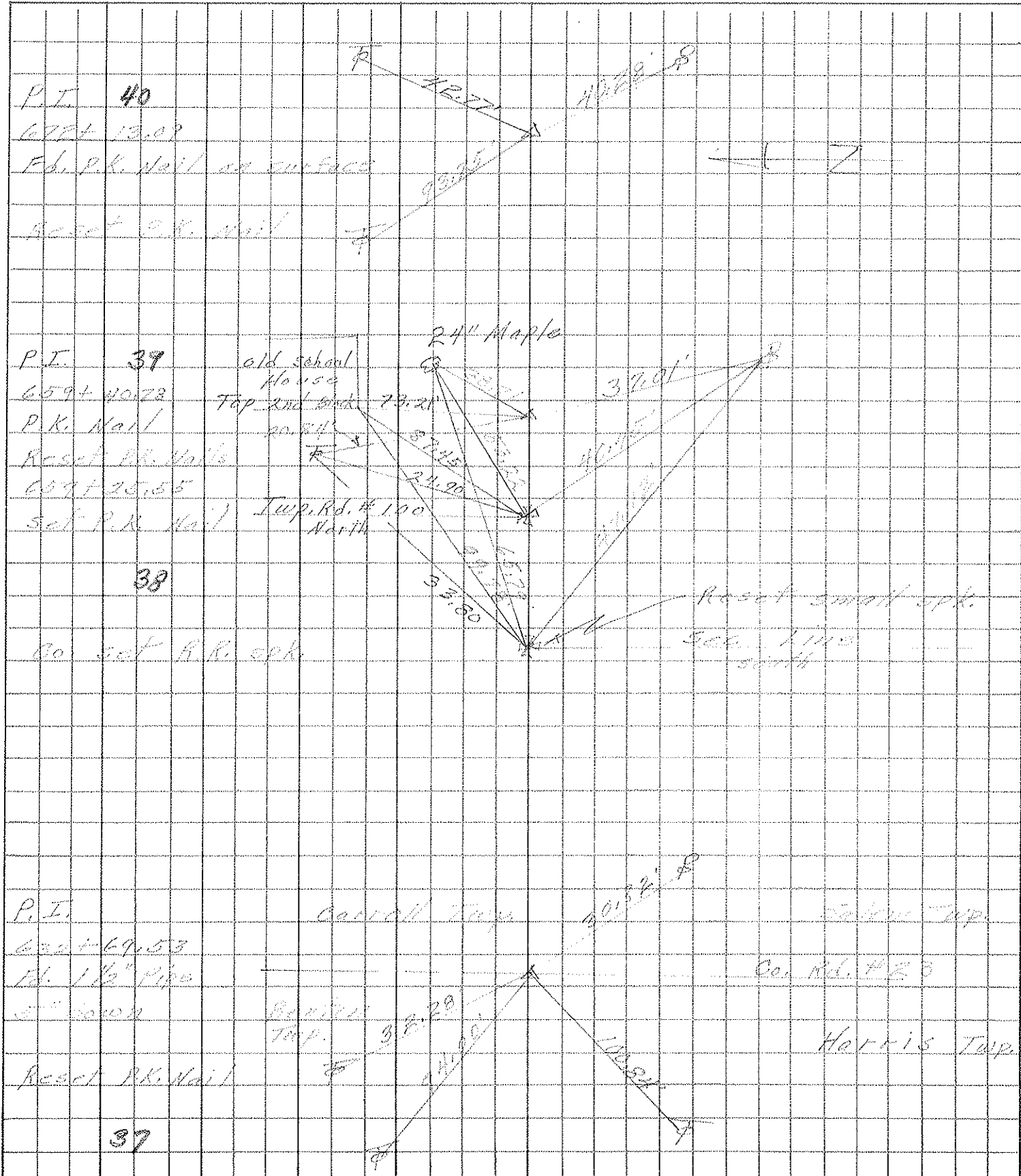
COUNTY Ottawa DATE 8-13-76

S. R. 163 WEATHER Fair

SEC. 36-31 1-6 TEMP. 80°

DESCRIPTION Beaton, Harris, Salem Townships JOB NO.

LEFT CENTER LINE RIGHT



PERSONNEL TITLE PERSONNEL TITLE

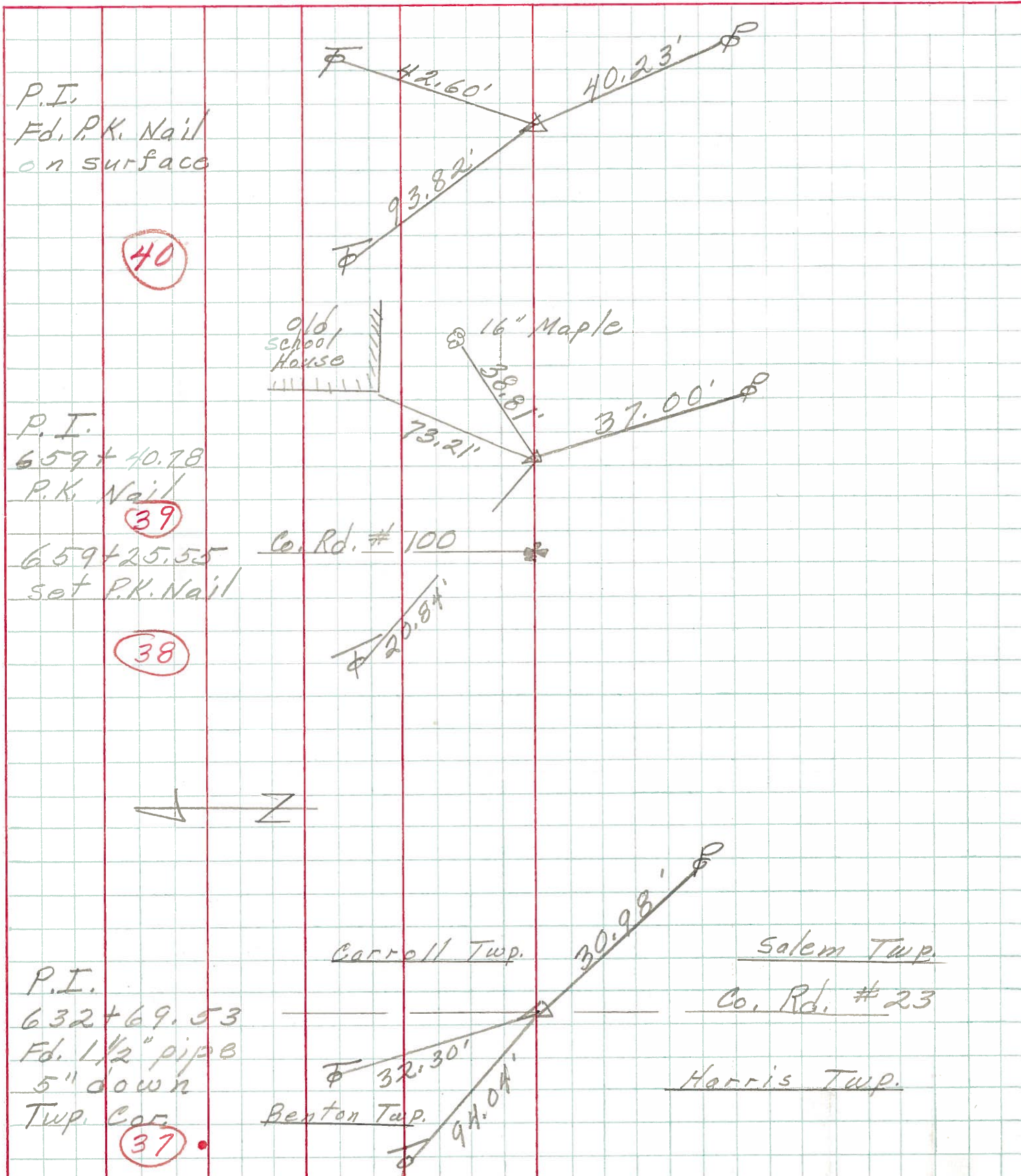
COUNTY Ottawa DATE 3-3-66

S. R. 163 WEATHER

SEC. 36-31 & 1-6 TEMP.

DESCRIPTION Benton, Harris, Salem & Carroll Twp. JOB NO.

LEFT CENTER LINE RIGHT



P.I.  
Fd. P.K. Nail  
on surface

40

P.I.  
659+40.78  
P.K. Nail

39

659+25.55 Co. Rd. # 100  
set P.K. Nail

38



P.I.  
632+69.53  
Fd. 1 1/2" pipe  
5" down  
Twp. Cor.

37

Carroll Twp.

Salem Twp.

Co. Rd. # 23

Harris Twp.

Benton Twp.

PERSONNEL TITLE PERSONNEL TITLE

COUNTY Ottawa

DATE 3-3-66

S. R. 163

WEATHER

SEC. 9.98

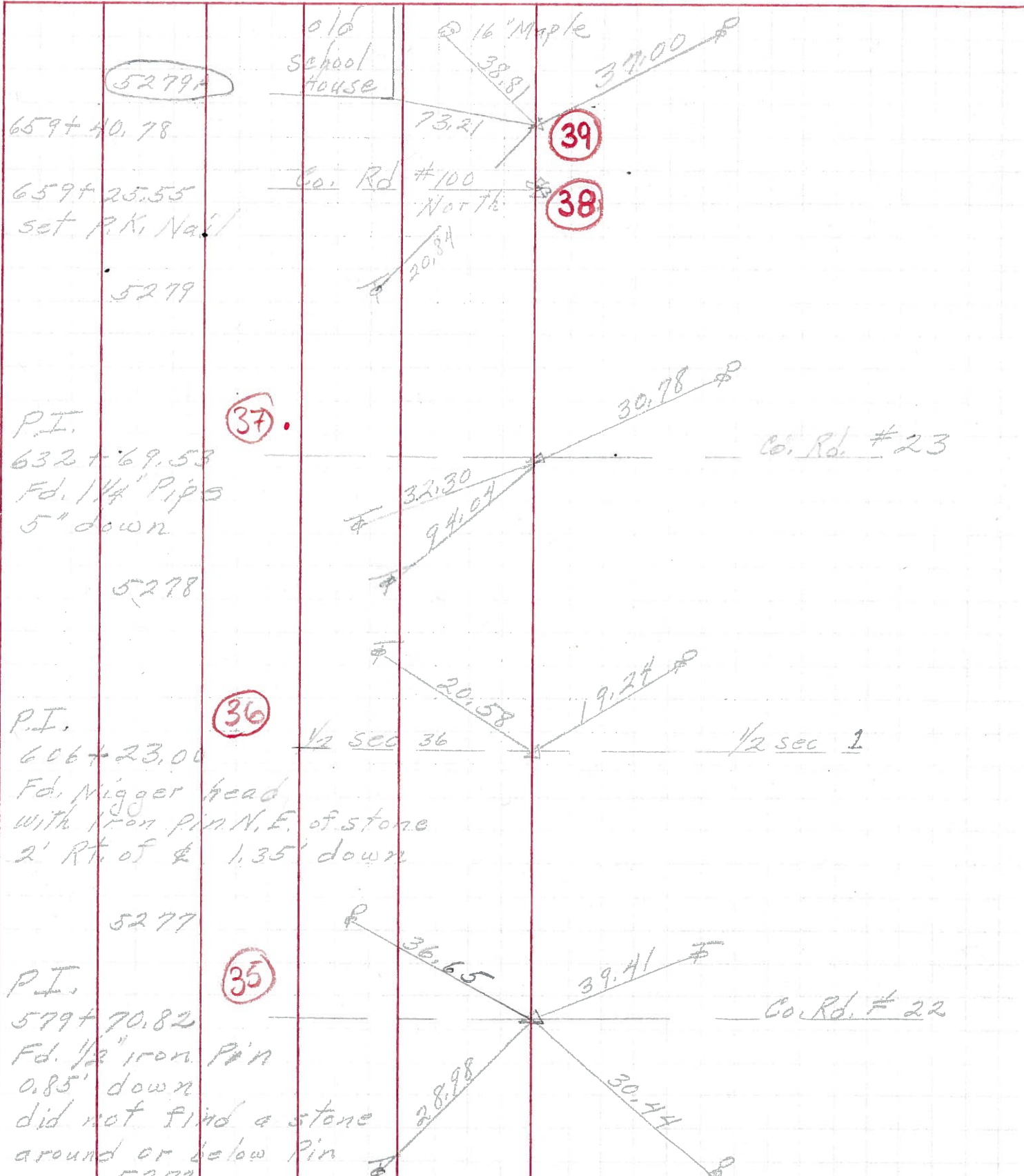
TEMP. 60°

DESCRIPTION

Control Points

JOB NO.

LEFT CENTER LINE RIGHT



5279A

659+40.78

659+25.55

set P.K. Nail

5279

P.I.

632+69.53

Fd. 1 1/4" Pips

5" down

5278

P.I.

606+23.00

Fd. Nigger head with iron pin N.E. of stone 2' Rt. of & 1.35' down

5277

P.I.

579+70.82

Fd. 1/2" iron Pin 0.85' down did not find a stone around or below pin

5277