

O.D.O.T. DISTRICT 2 SURVEY OFFICE (USE ONLY)

PERSONNEL \_\_\_\_\_

REFERENCE NO. 37 A

SHEET 7 OF 17

NOTES CHENEY DATE 8/13/76

H.C. RIPPLE WEATHER FAIR

R.C. BARBOUR TEMP. 80°

ROUTE SR 163

COUNTY OTTAWA

TOWNSHIP SALEM

SECTION 6

DWG BY NIESE PID \_\_\_\_\_

T 6 N R 15 E

TYPE MONUMENT R.R. SPIKE

ON SURFACE - ~~BELOW~~ ON \_\_\_\_\_

OFFSET  $\odot$  PAVEMENT \_\_\_\_\_ LT : RT

\_\_\_\_\_ TO \_\_\_\_\_ EDGE PAVEMENT

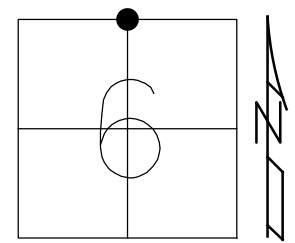
STATION: 659+13 ±

HORZ. DATUM: \_\_\_\_\_

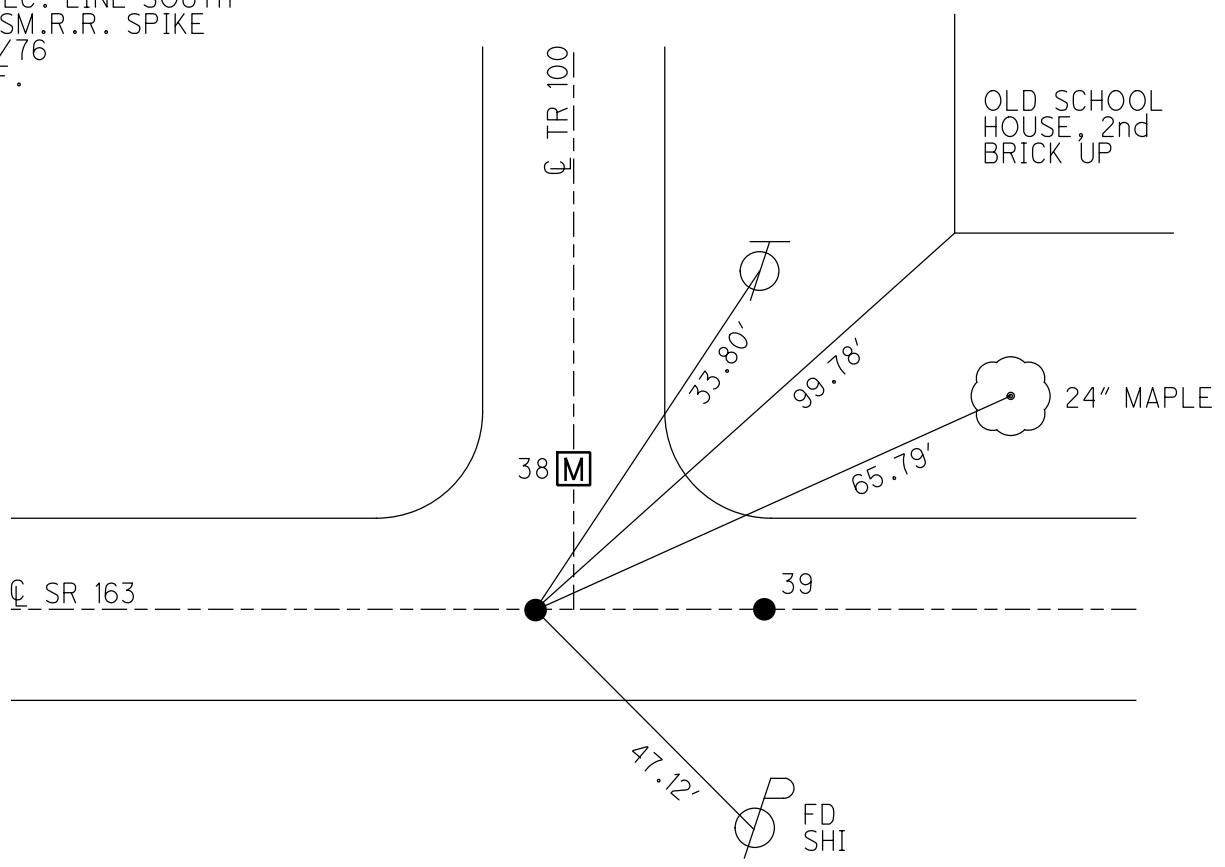
GEOID: \_\_\_\_\_

GRID: NORTHING: \_\_\_\_\_

EASTING: \_\_\_\_\_



RECORD:  
 COUNTY SET R.R. SPIKE  
 ON SEC. LINE SOUTH  
 SET SM.R.R. SPIKE  
 8/13/76  
 D.N.F.  
 1993



OLD SCHOOL  
 HOUSE, 2nd  
 BRICK UP

24" MAPLE

PERSONNEL TITLE PERSONNEL TITLE

COUNTY Ottawa DATE 8-13-76

S. R. 163 WEATHER Fair

SEC. 36-31 1/2 1-6 TEMP. 80°

DESCRIPTION Beaton, Harris, Salem Townships JOB NO.

LEFT CENTER LINE RIGHT

