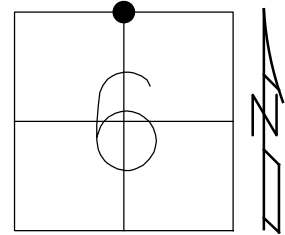


O.D.O.T. DISTRICT 2 SURVEY OFFICE (USE ONLY)

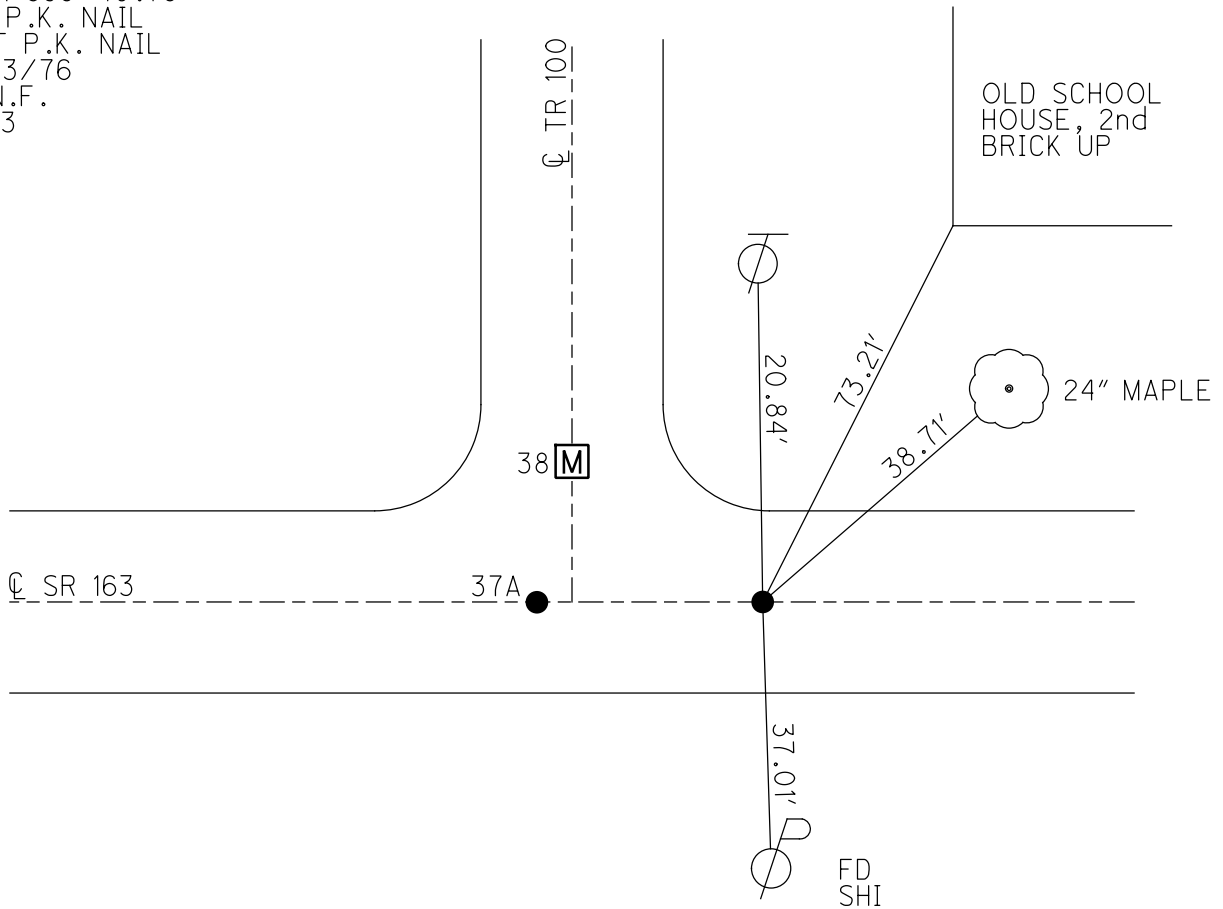
PERSONNEL _____ REFERENCE NO. 39 SHEET 9 OF 17
 NOTES CHENEY DATE 8/13/76 ROUTE SR 163
 H.C. RIPPLE WEATHER FAIR COUNTY OTTAWA
 R.C. BARBOUR TEMP. 80° TOWNSHIP SALEM
 SECTION 6
 DWG BY NIESE PID _____ T 6 N R 15 E

TYPE MONUMENT P.K. NAIL
 ON SURFACE - ~~BELOW~~ ON
 OFFSET C PAVEMENT _____ LT : RT
 _____ TO _____ EDGE PAVEMENT
 STATION: 659+40.78



HORZ. DATUM: _____ GEOID: _____
 GRID: NORTHING: _____ EASTING: _____

RECORD: P.I.
 STA 659+40.78
 FD P.K. NAIL
 SET P.K. NAIL
 8/13/76
 D.N.F.
 1993



O.D.O.T. DISTRICT 2 SURVEY OFFICE

PERSONNEL

REFERENCE NO. 38-39 SHEET 19 OF 24

NOTES CHENEY

H.C. RIPPLE

R.C. BARBOUR

DATE 6-17-1993

WEATHER FAIR

TEMP. 80°

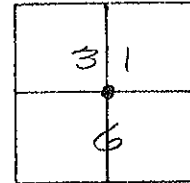
ROUTE # 163

COUNTY OTAWA

TOWNSHIP SALEM

SECTION 6, 31

T 6 N R 15 E



TYPE MONUMENT MONUMENT Box

ON SURFACE - ~~BELOW~~ ON

LEFT-~~☉~~ PAV'T. - ~~RIGHT~~ 23'

11' RT. TO RT. EDGE PAVEMENT

S.L.M. 660+40

RECORD: 8-13-1976

P.I. STA. 659+40.78 (DID NOT FIND 1993)

PK. NAIL

RESET PK. NAILS

659+25.55 (MON. Box 1993)

SET PK. NAIL

COUNTY SET RR. SPK.

ON SEC. LINE SOUTH

RESET SMALL SPK.

DID NOT FIND 1993

* NOTE: SEE SHEET No. 13
8-13-1976 REF.

Box 15 UP

9-27-1993

RCC

OLD SCHOOL
HOUSE

TOP OF
2ND. BLOCK

FD. N/S.
SW. SIDE

T.R. #100

59.3'

87.4'

FD Mon. Box

☉ PAV'T.

S.R. #163

78.4'

FD. N/S.
N. SIDE

Preventive Maintenance
Microsurfaced 2000
Existing Point Uncovered
Date 5-15-00

PERSONNEL TITLE PERSONNEL TITLE

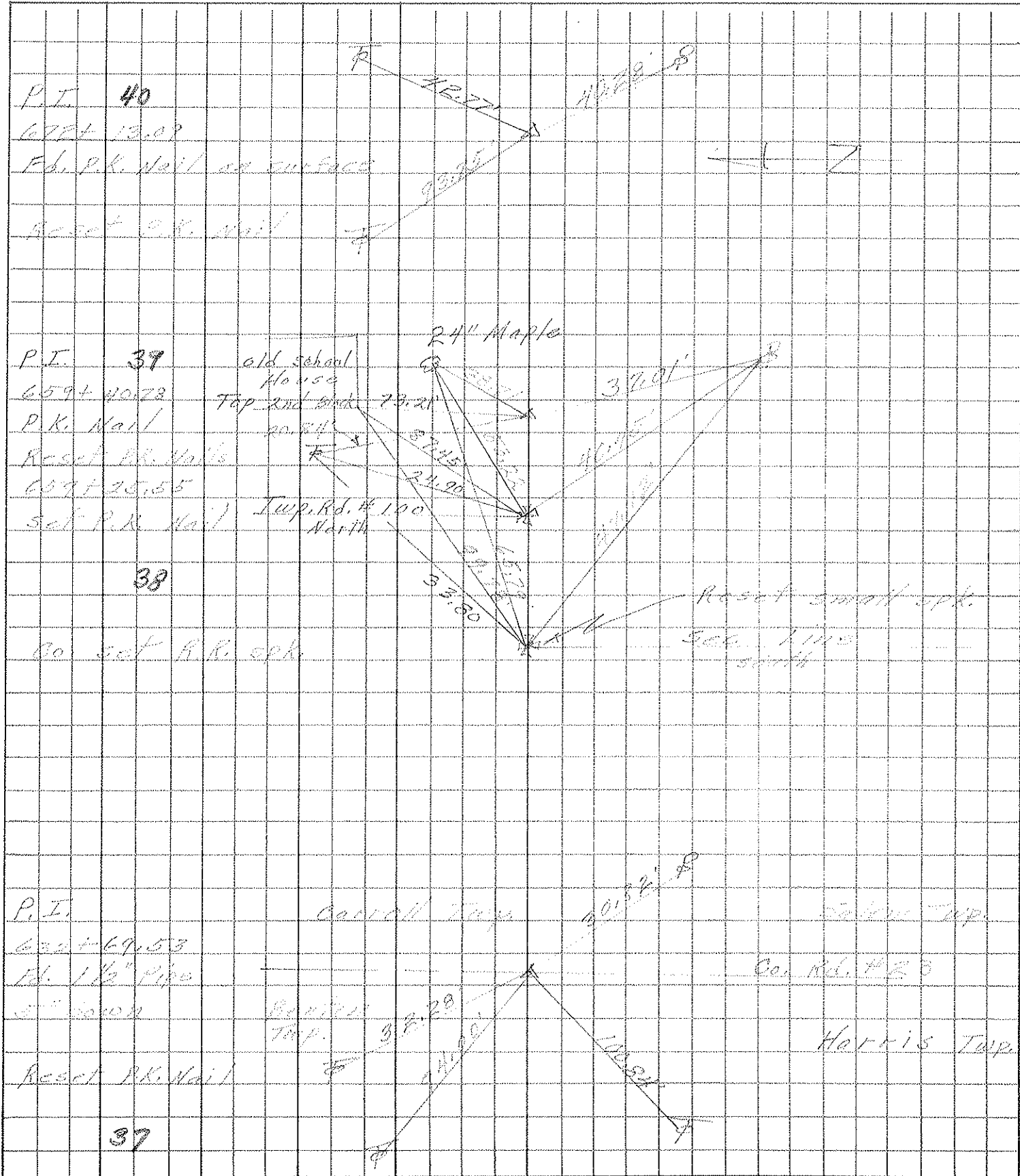
COUNTY Ottawa DATE 8-13-76

S. R. 163 WEATHER Fair

SEC. 36-31 1/2 1-6 TEMP. 80°

DESCRIPTION Beaton, Harris, Salem Townships JOB NO.

LEFT CENTER LINE RIGHT



PERSONNEL TITLE PERSONNEL TITLE

COUNTY Ottawa DATE 3-3-66

S. R. 163 WEATHER

SEC. 9.98 TEMP. 60°

DESCRIPTION

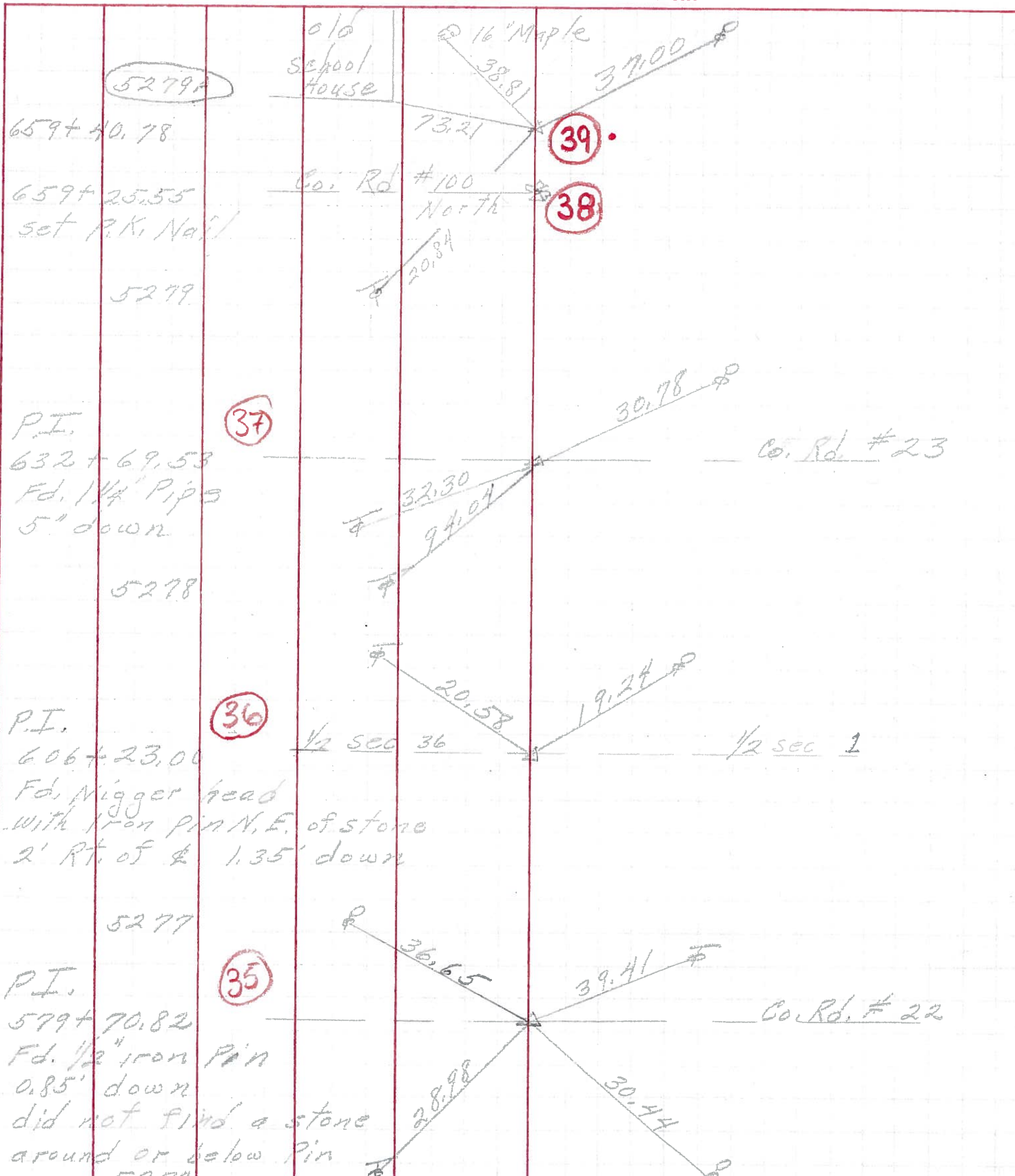
Control Points

JOB NO.

LEFT

CENTER LINE

RIGHT



PERSONNEL TITLE PERSONNEL TITLE

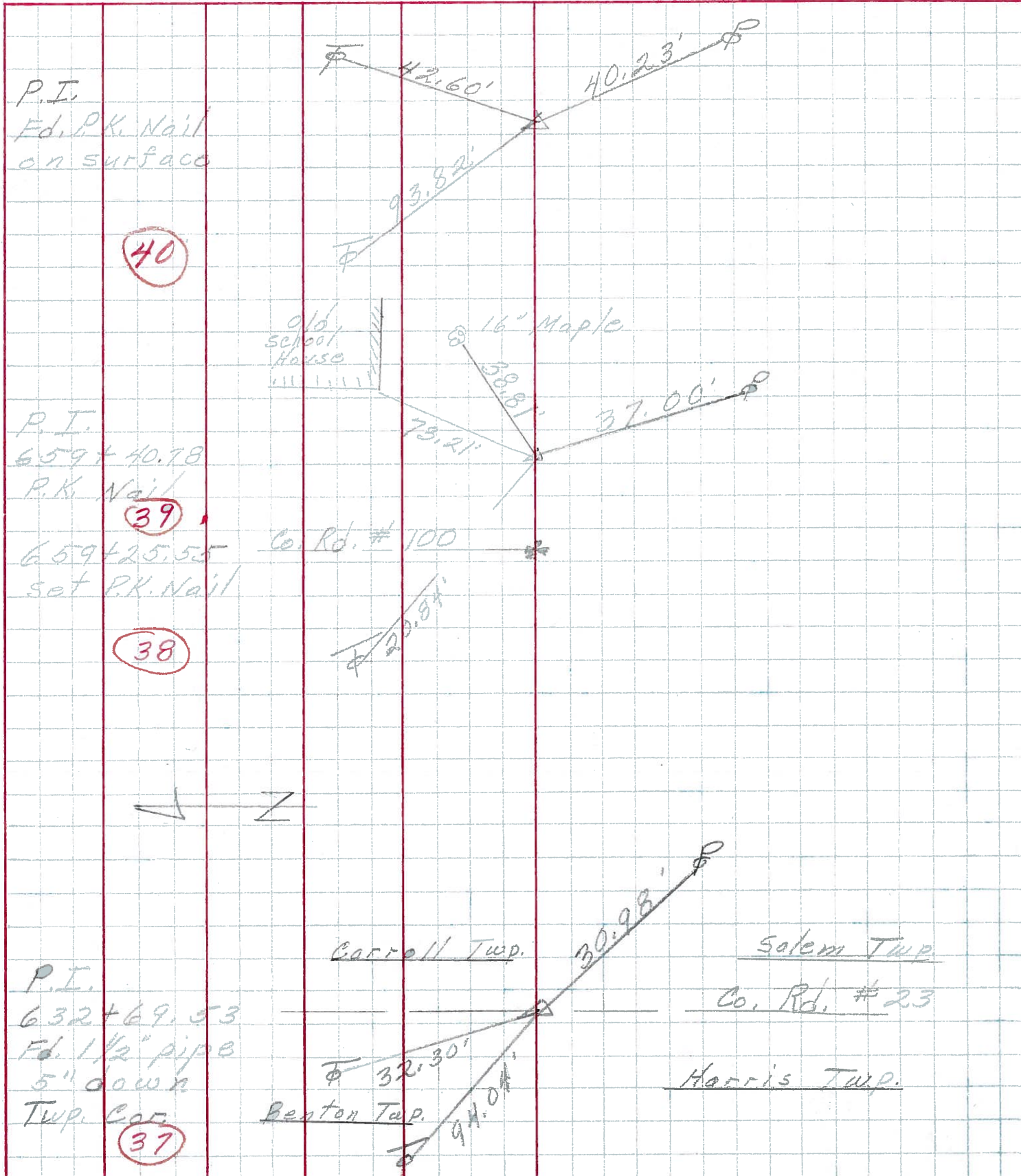
COUNTY Ottawa DATE 3-3-66

S. R. 163 WEATHER

SEC. 36-31 E 1-6 TEMP.

DESCRIPTION Benton, Harris, Salem & Carroll Twp. JOB NO.

LEFT CENTER LINE RIGHT



P.I.
Ed. P.K. Nail
on surface

40

P.I.
659+40.78
P.K. Nail

39

659+25.55
set P.K. Nail

38

P.I.
632+69.53
Ed. 1 1/2" pipe
5" down
Twp. Cor.

37