

O.D.O.T. DISTRICT 2 SURVEY OFFICE (USE ONLY)

PERSONNEL

REFERENCE NO. 40

SHEET 10 OF 17

NOTES CHENEY

DATE 8/13/76

ROUTE SR 163

H.C. RIPPLE

WEATHER FAIR

COUNTY OTTAWA

R.C. BARBOUR

TEMP. 80°

TOWNSHIP SALEM

SECTION 6

DWG BY NIESE PID \_\_\_\_\_

T 6 N R 15 E

TYPE MONUMENT P.K. NAIL

ON SURFACE - ~~BELOW~~ ON

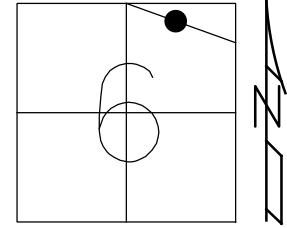
OFFSET Q PAVEMENT ON \_\_\_\_\_ LT : RT

\_\_\_\_\_ TO \_\_\_\_\_ EDGE PAVEMENT

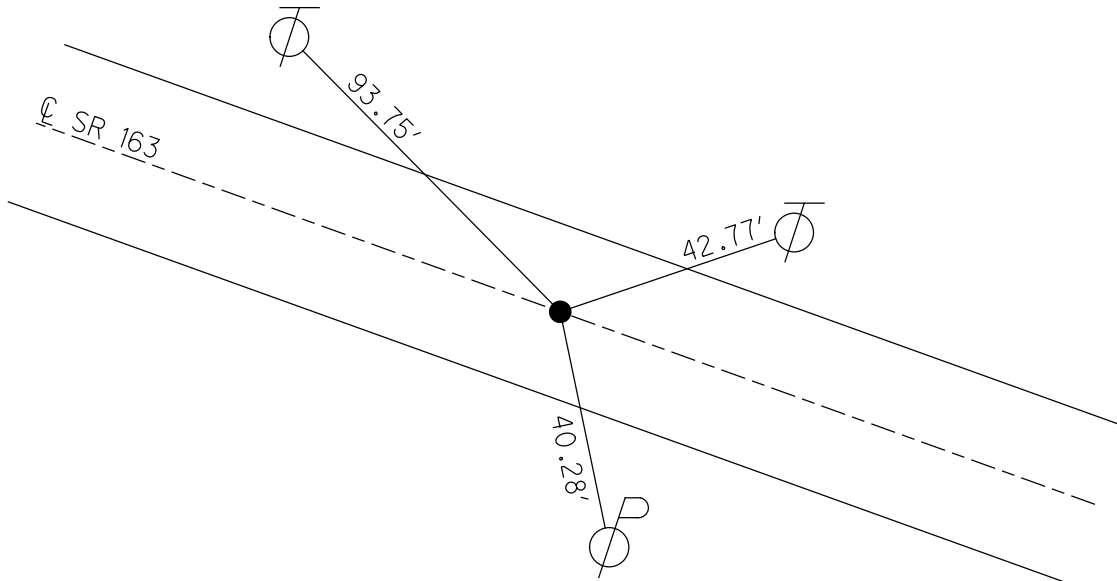
STATION: 672+13.09

HORZ. DATUM: \_\_\_\_\_ GEOID: \_\_\_\_\_

GRID: NORTHING: \_\_\_\_\_ EASTING: \_\_\_\_\_



RECORD: P.I.  
STA 672+13.09  
FD P.K. NAIL  
RESET P.K. NAIL  
8/13/76  
D.N.F.  
6/18/95, RIPPLE



PERSONNEL TITLE PERSONNEL TITLE

COUNTY Ottawa DATE 8-13-76

S. R. 163 WEATHER Fair

SEC. 36-31 1/2 1-6 TEMP. 80°

DESCRIPTION Beaton, Harris, Salem Townships JOB NO.

LEFT CENTER LINE RIGHT

