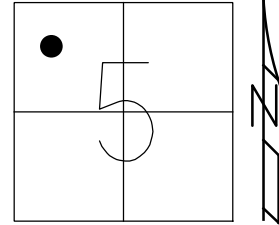


O.D.O.T. DISTRICT 2 SURVEY OFFICE (USE ONLY)

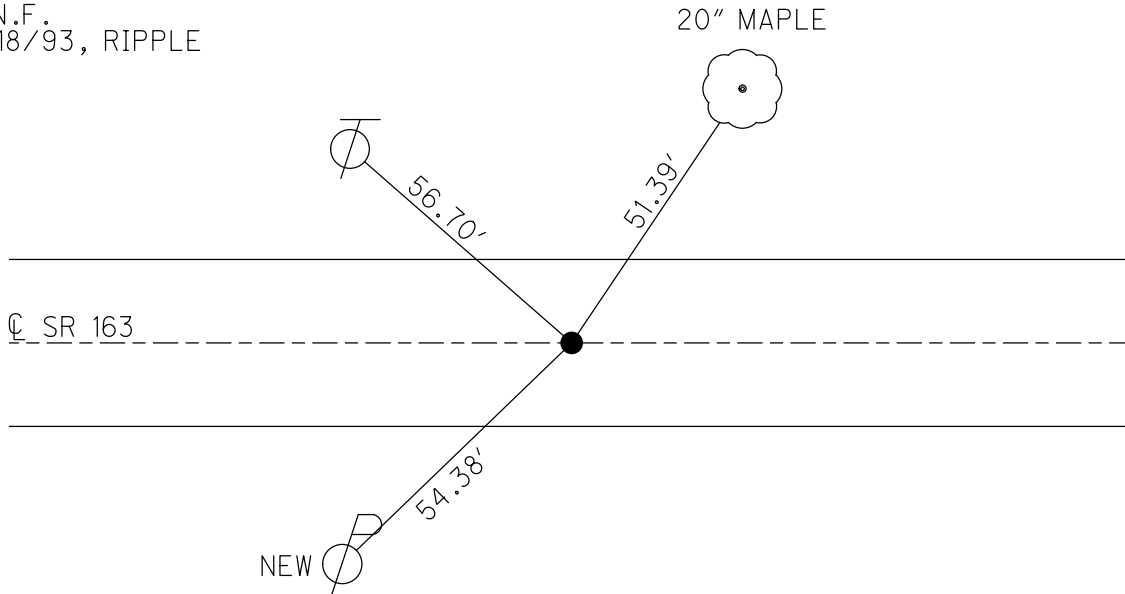
PERSONNEL \_\_\_\_\_ REFERENCE NO. 42 SHEET 13 OF 17  
 NOTES CHENEY DATE 8/16/76 ROUTE SR 163  
 H.C. RIPPLE WEATHER FAIR COUNTY OTTAWA  
 R.C. BARBOUR TEMP. 75° TOWNSHIP SALEM  
 DWG BY NIESE PID \_\_\_\_\_ SECTION 5  
 T 6 N R 15 E

TYPE MONUMENT P.K. NAIL  
 ON SURFACE - ~~BELOW~~ ON  
 OFFSET ☉ PAVEMENT \_\_\_\_\_ LT : RT  
 \_\_\_\_\_ TO \_\_\_\_\_ EDGE PAVEMENT  
 STATION: 694+64.56



HORZ. DATUM: \_\_\_\_\_ GEOID: \_\_\_\_\_  
 GRID: NORTHING: \_\_\_\_\_ EASTING: \_\_\_\_\_

RECORD: P.I.  
 STA 694+64.56  
 $\Delta = 12^\circ 45' 30''$  LT  
 1970 PLANS  
 FD P.K. NAIL  
 SET P.K. NAIL  
 8/16/76  
 D.N.F.  
 6/18/93, RIPPLE



PERSONNEL TITLE PERSONNEL TITLE

COUNTY Ottawa DATE 8-16-76

S. R. 163 WEATHER Fair

SEC. 5 TEMP. 75°

DESCRIPTION Salem Twp. LEFT CENTER LINE RIGHT JOB NO.

P.L. R.R. S.P.K. (P)  
Reset P.K. Nail

P.L. 43  
2017 84.50  
Iron Pin  
10' Lth. of edge permit.

T.S.  
6964  
11' Lth. of edge  
Reset P.K. Nail

P.L. 42  
6947 64.56  
Ed. P.K. Nail

Reset P.K. Nail

P.L. # 41  
6874 52.12  
Ed. P.K. Nail on Top

Reset P.K. Nails

