

O.D.O.T. DISTRICT 2 SURVEY OFFICE (USE ONLY)

PERSONNEL

REFERENCE NO. 46

SHEET 2 OF 74

NOTES HOMAN

DATE 7-27-17

ROUTE SR 163

H.C. LEU

WEATHER CLOUDY

COUNTY OTTAWA

R.C. CARSON

TEMP. 76°

TOWNSHIP SALEM

SECTION 5

DWG BY JAMES PID 95757

T 6 N R 15 E

TYPE MONUMENT P.K. SHANK

~~ON SURFACE~~ - BELOW 0.15'

OFFSET Q PAVEMENT ON LT : RT

17.5' TO LT EDGE PAVEMENT

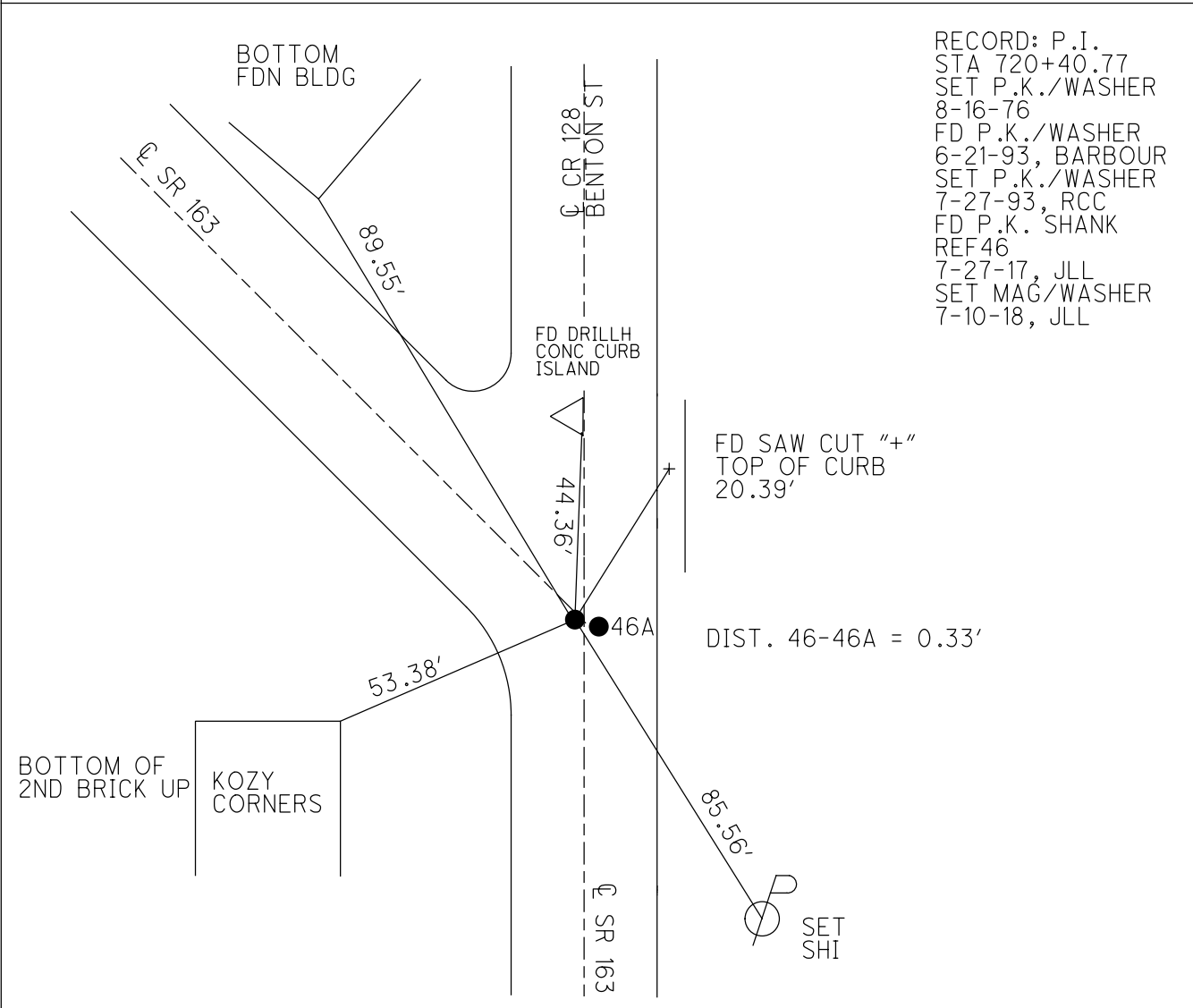
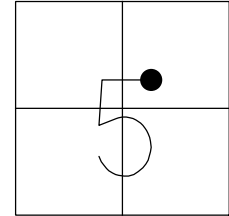
STATION: 721+53

HORZ.DATUM: NAD83 2011

GEOID: NAVD88 2012A

GRID: NORTHING: 672537.340

EASTING: 1789532.206



RECORD: P.I.
 STA 720+40.77
 SET P.K./WASHER
 8-16-76
 FD P.K./WASHER
 6-21-93, BARBOUR
 SET P.K./WASHER
 7-27-93, RCC
 FD P.K. SHANK
 REF46
 7-27-17, JLL
 SET MAG/WASHER
 7-10-18, JLL

O.D.O.T. DISTRICT 2 SURVEY OFFICE

PERSONNEL

REFERENCE NO. 46

SHEET 22 OF 24

NOTES CHENEY

H.C. RIPPLE

DATE 6-21-1993

ROUTE #163

R.C. BARBOR

WEATHER CLOUDY

COUNTY OTAWA

GEYMAN

TEMP. 75°

TOWNSHIP SALEM

SECTION 5-OAK HARBOR

T 6 N R 15 E

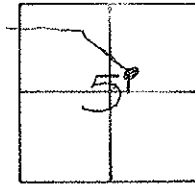
TYPE MONUMENT PK/WASHER

ON SURFACE - ~~BELOW~~ ON

~~LEFT~~ - Q. PAV'T. - ~~RIGHT~~ ON Q. INTERSECTION

17.5 TO 4T. EDGE PAVEMENT

S.L.M. 721453



RECORD: 8-16-1976

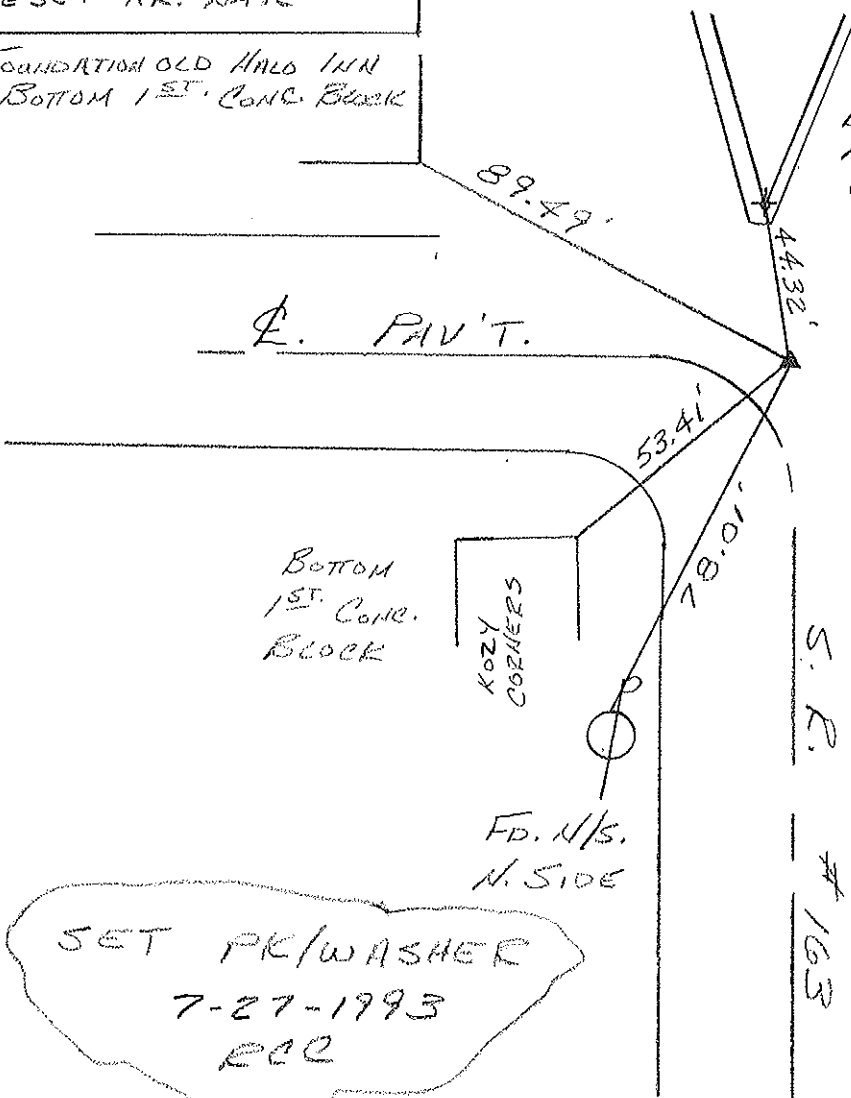
R.I. STA. 720+40.77

R.R. SPK.

RESET PK. NAIL

FOUNDATION OLD HALO INN
BOTTOM 1ST. CONC. BLOCK

DRILLED HOLE INSIDE
ANGLE POINT CONC. CURB
OF ISLAND



SET PK/WASHER
7-27-1993
RCR

| PERSONNEL | TITLE | PERSONNEL | TITLE | COUNTY | DATE |
|-----------|-------|-----------|-------|-------------------|-----------|
| | | | | 163 ↓ Ottawa ↑ | 11-17-66 |
| | | | | S. R. | WEATHER |
| | | | | SEC. Oak Harbor | TEMP. 60° |

| DESCRIPTION | LEFT | CENTER LINE | RIGHT | JOB NO. |
|-------------|------|-------------|-------|---------|
|-------------|------|-------------|-------|---------|

| | | | | |
|--|------|--|--|--|
| P.I. 720+40.97 5286 | (46) | N.E. cor. doorway 83.23 47.83 89.57 | S.E. cor. gas station 61.73 S.R. 163 | |
| Oak Harbor Corp Limits (?) 5285 | (45) | 1/2' above ground 2" Pipe 44.92 | 53.42 89.84 | |
| P.I. 709+98.01 P.K. Nail 5284 | (44) | 30.19 | 28.99 128.89 | |
| P.I. 701+81.50 Iron Pin 5283 | (43) | 73.97 11.00' | 101.63 87.80 N. & S. in Permit | |

| PERSONNEL | TITLE | PERSONNEL | TITLE |
|-----------|-------|-------------|----------|
| | | | |
| COUNTY | | Ottawa | DATE |
| | | 163 | 11-17-66 |
| S. R. | | 163 | WEATHER |
| | | | Fair |
| SEC. | | 5 Salem Twp | TEMP. |
| | | | 60° |

DESCRIPTION Oak Harbor JOB NO. _____

