

O.D.O.T. DISTRICT 2 SURVEY OFFICE (USE ONLY)

PERSONNEL

REFERENCE NO. 47 A

SHEET 4 OF 74

NOTES LEU

DATE 6-28-17

ROUTE SR 163

H.C. LEU

WEATHER SUNNY

COUNTY OTTAWA

R.C. CARSON

TEMP. 67°

TOWNSHIP SALEM

DWG BY JAMES

PID 95757

SECTION 5

T 6 N R 14 E

TYPE MONUMENT P.K./WASHER

ON SURFACE - ~~BELOW~~ ON

OFFSET ☉ PAVEMENT 0.3' LT : ~~RT~~

TO EDGE PAVEMENT

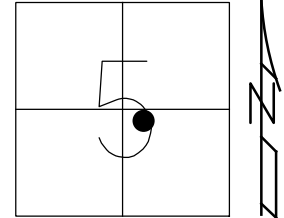
STATION: 723+21

HORZ.DATUM: NAD83 2011

GEOID: NAVD88 2012A

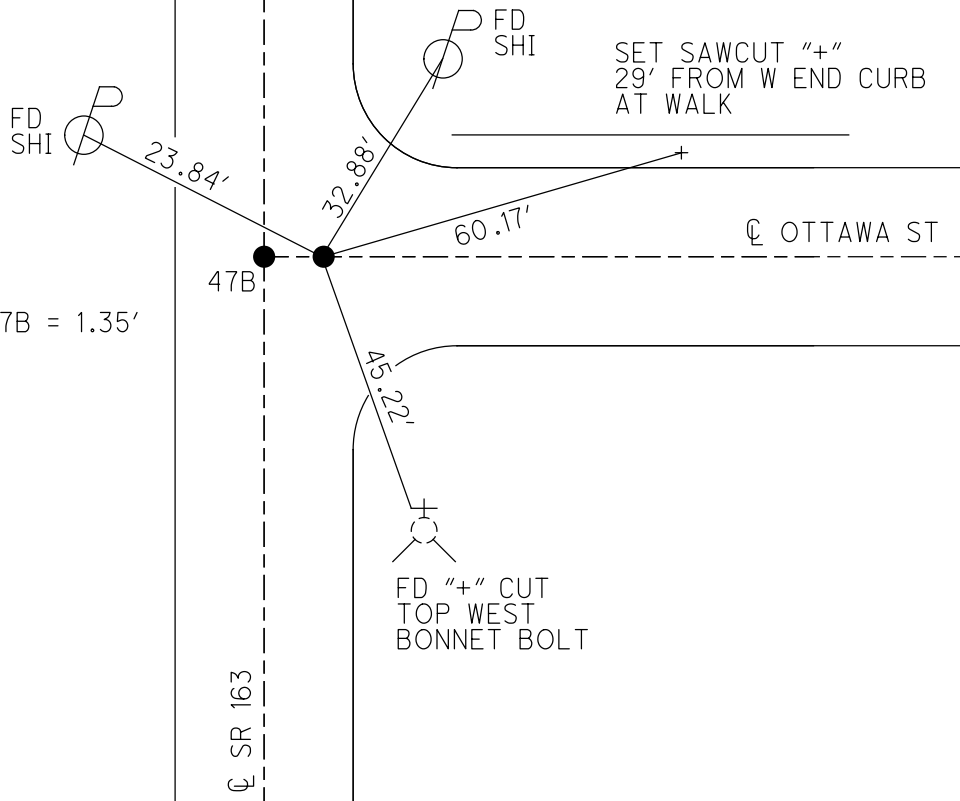
GRID: NORTHING: 672228.838

EASTING: 1789528.118



RECORD:
 FD P.K./WASHER
 8-1-00 SAH
 SET P.K./WASHER
 11-28-00, SAH
 SHOT P.K./WASHER
 REFA47
 FD P.K./WASHER
 6-28-17, JLL
 SET MAG/WASHER
 7-10-18, JLL

DIST. 47A-47B = 1.35'



O.D.O.T. DISTRICT 2 SURVEY OFFICE

PERSONNEL _____

REFERENCE NO. 47

SHEET 1 OF 63

NOTES Huss

H.C. Condes

R.C. Huss

DATE 8-1-00

WEATHER Clay-Fair

TEMP. 75°F

ROUTE 163

COUNTY Ottawa

TOWNSHIP Salmon

SECTION 5

T 6 N R 14 E

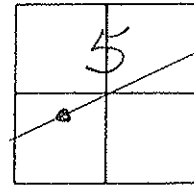
TYPE MONUMENT (A) - PK (B) - PK

ON SURFACE - BELOW Surf.

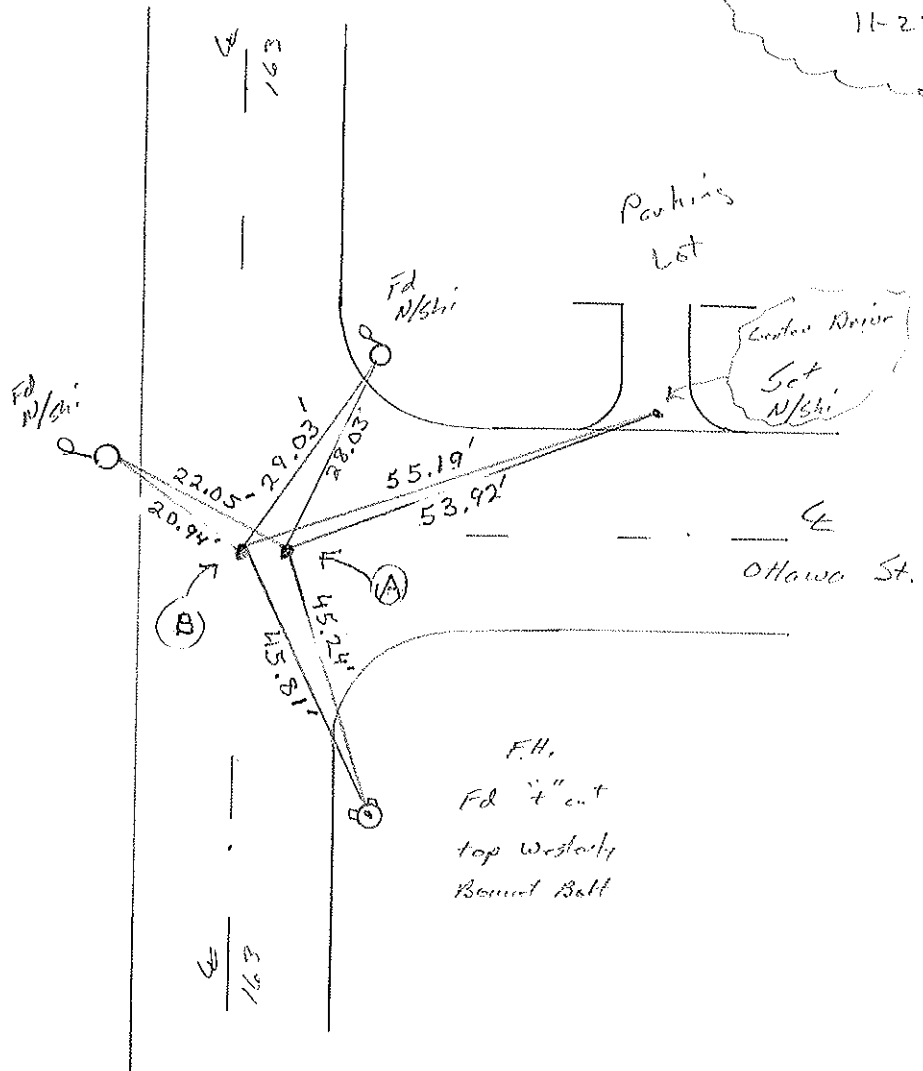
LEFT - ℄ PAV'T. - RIGHT (A) - ℄ (B) - 1.3' RET

— TO — EDGE PAVEMENT

S.L.M. 723 + 21



Set PK/w
both points
11-28-00
SAM



Distance
between points
A - B
1.3'

Resurfaced 2000

O.D.O.T. DISTRICT 2 SURVEY OFFICE

PERSONNEL

REFERENCE NO. 47

SHEET 23 OF 24

NOTES CHENEY

H.C. FIPPLE

R.C. BARBOUR

GEYMAN

DATE 6-21-1993

WEATHER CLOUDY

TEMP. 75°

ROUTE #163

COUNTY OTTAWA

TOWNSHIP SALEM

SECTION 5-OAK HARBOR

T6N R15E

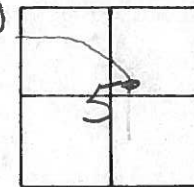
TYPE MONUMENT HOLES IN PAV'T. (P.K.'S KNOCKED OUT)

ON SURFACE - ~~BELOW~~ ON

LEFT - C PAV'T. - RIGHT A" = 0.7' LT.; B" = 0.7' RT.

A" = 17.0'
B" = 15.6' TO FT. EDGE PAVEMENT

S.L.M. 724+63



RECORDED: 11-19-1973

P.O.T. STA. 723+49.51

2 P.K. NAILS

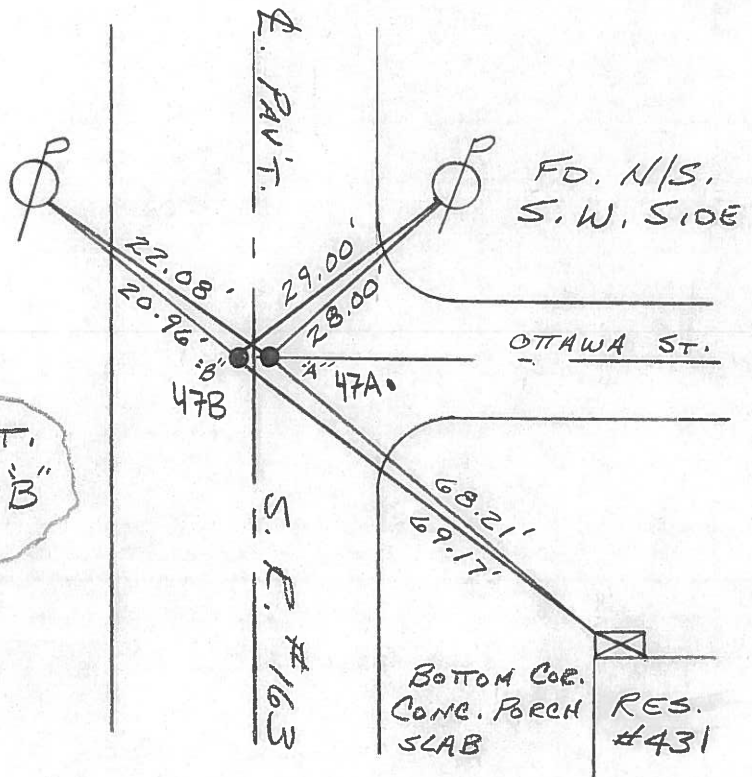
RESET P.K. NAILS (8-16-76)

SET PK/WASHER
7-27-1993
RCC

FD. N/S.
S.E. SIDE

FD. N/S.
S.W. SIDE

1.30' BET.
PT. A" & R. B"



PERSONNEL TITLE PERSONNEL TITLE

COUNTY Ottawa DATE 11-19-73

S. R. 163 WEATHER Cloudy

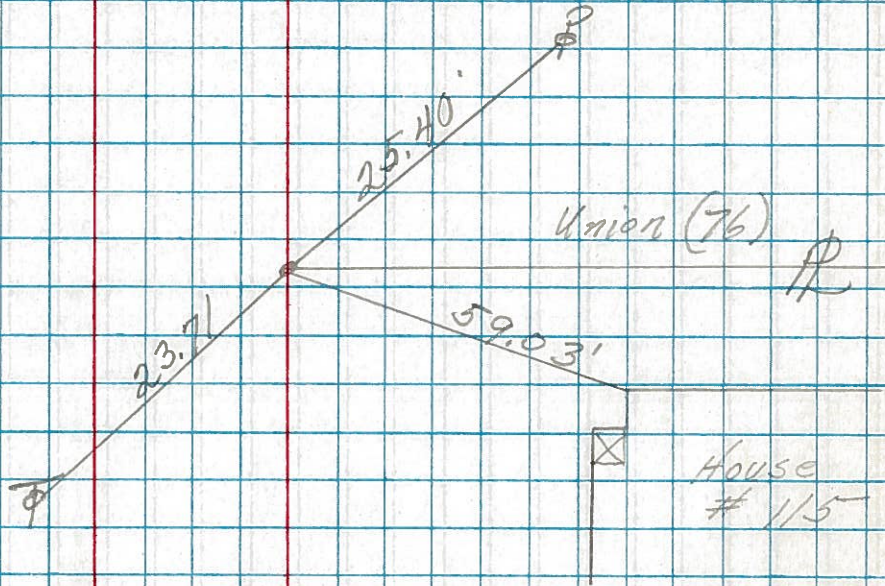
SEC. Oak Harbor TEMP. 50°

DESCRIPTION Sec 4 Salem Twp. JOB NO.

LEFT CENTER LINE RIGHT

48

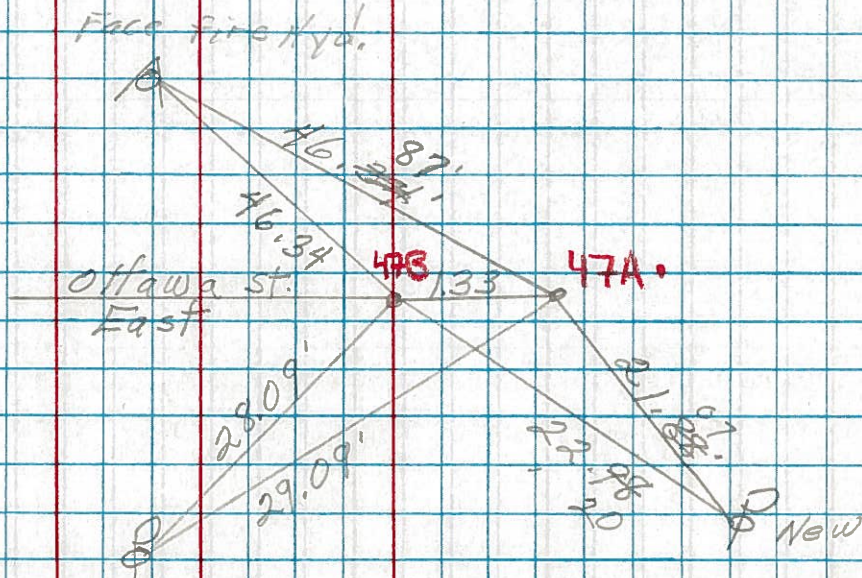
727+70
R.R. spk.



Reset P.K. Nails
8-16-76

Face first Hyd.

P.O.T. 47
723+49.51
2-P.K. Nail



PERSONNEL TITLE PERSONNEL TITLE

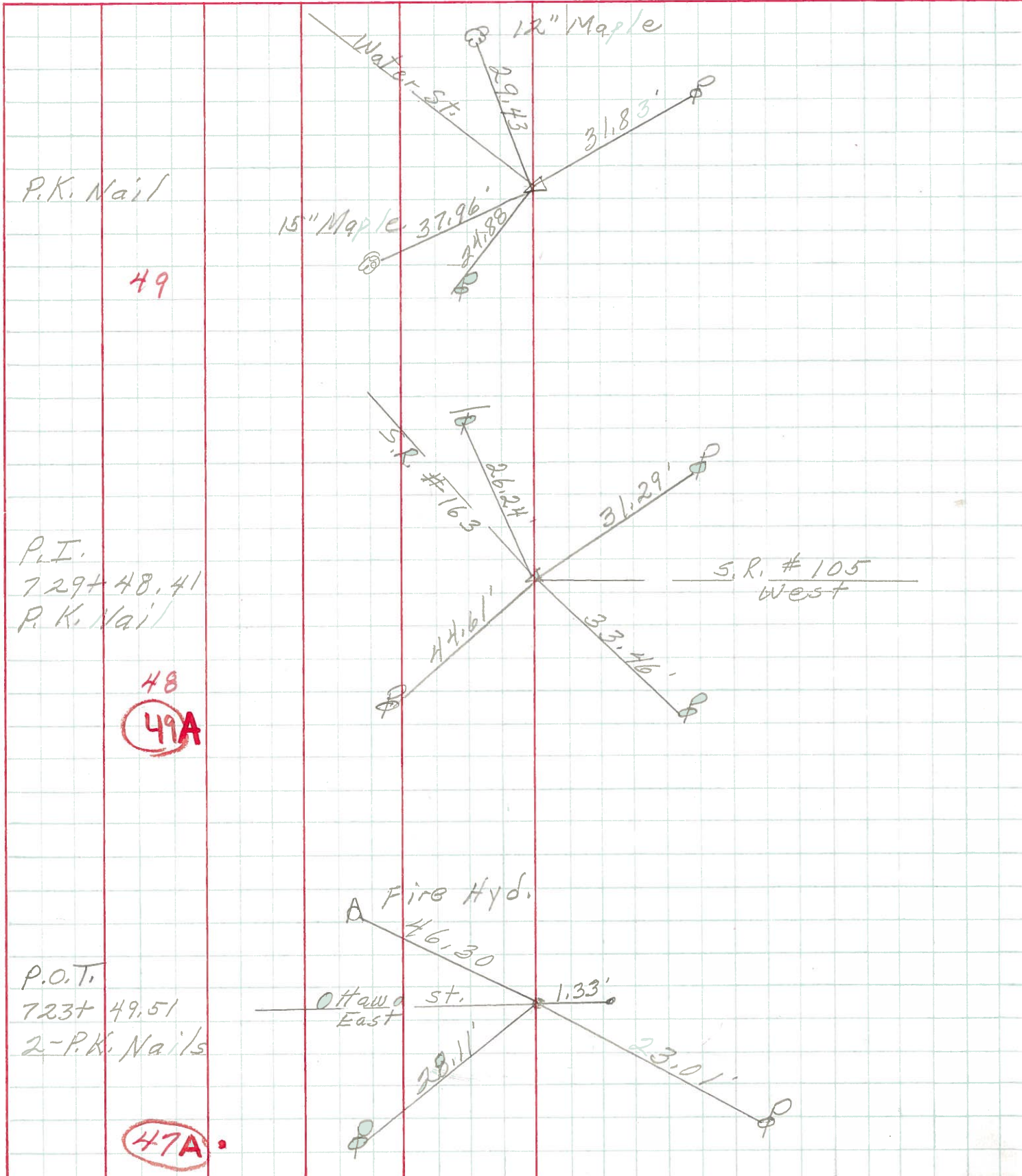
COUNTY Ottawa DATE 11-17-66

S. R. 163 WEATHER Fair

SEC. Oak Harbor TEMP. 60°

DESCRIPTION Sec 4 Salem Twp. JOB NO.

LEFT CENTER LINE RIGHT



P.K. Nail

49

P.I.

729+ 48.41

P.K. Nail

48

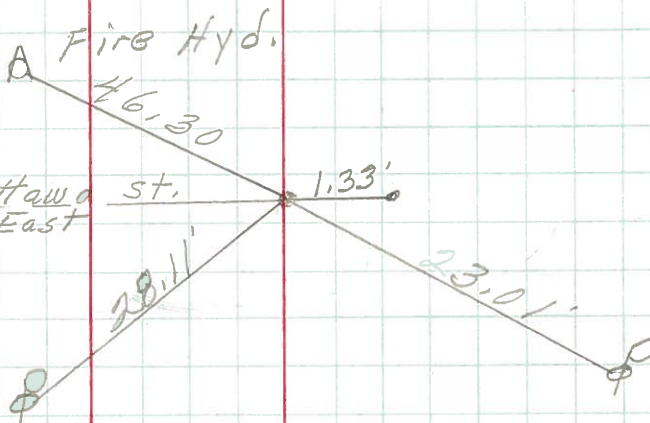
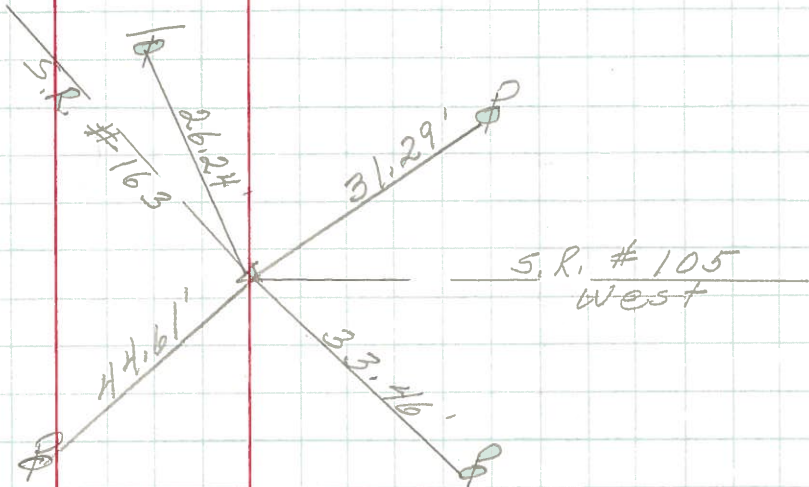
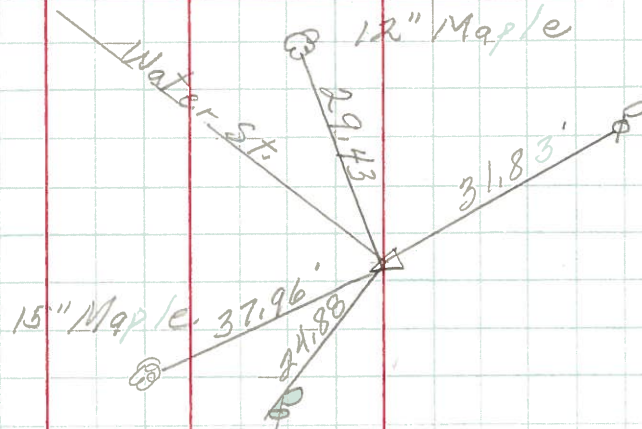
49A

P.O.T.

723+ 49.51

2-P.K. Nails

47A



PERSONNEL _____ TITLE _____ PERSONNEL _____ TITLE _____
 COUNTY Ottawa DATE 11-17-66
 S. R. 163 WEATHER _____
 SEC. Oak Harbor TEMP. 60°

DESCRIPTION Control Points JOB NO. _____
 LEFT CENTER LINE RIGHT

