

O.D.O.T. DISTRICT 2 SURVEY OFFICE (USE ONLY)

PERSONNEL

REFERENCE NO. 48

SHEET 6 OF 74

NOTES CHENEY
 H.C. RIPPLE
 R.C. BARBOUR
GEYMAN

DATE 6-21-93
 WEATHER CLOUDY
 TEMP. 75°

ROUTE SR 163
 COUNTY OTTAWA
 TOWNSHIP SALEM
 SECTION 5
 T 6 N R 15 E

DWG BY JAMES PID 95757

TYPE MONUMENT P.K. NAIL

ON SURFACE - ~~BELOW~~ ON

OFFSET \odot PAVEMENT 1' LT : ~~RT~~

17' TO RT EDGE PAVEMENT

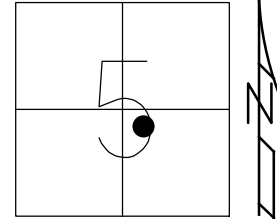
STATION: 728+86

HORZ. DATUM: _____

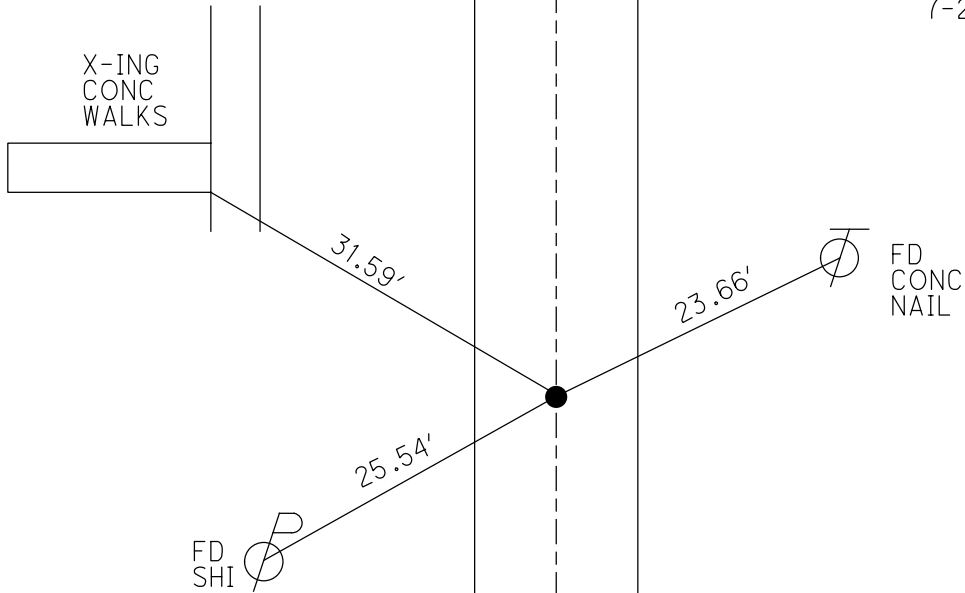
GEOID: _____

GRID: NORTHING: _____

EASTING: _____



RECORD:
 SET P.K. NAIL
 8-16-76
 FD P.K. NAIL
 6-21-93, BARBOUR
 SET P.K./WASHER
 7-27-93, RCC



O.D.O.T. DISTRICT 2 SURVEY OFFICE 2 of 63

PERSONNEL

REFERENCE NO. 48

SHEET 24 OF 24

NOTES CHENEY

H.C. RIPPLE

R.C. BARBOUR

GEYMAN

DATE 6-21-1993

WEATHER CLOUDY

TEMP. 75°

ROUTE # 163

COUNTY OTTAWA

TOWNSHIP SALEM

SECTION 5-OAK HARBOR

T 6N R 15E

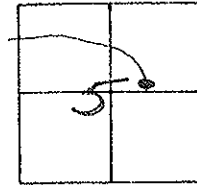
TYPE MONUMENT P.K. NAIL

ON SURFACE - ~~BELOW~~ ON

LEFT - C PAV'T. - ~~RIGHT~~ 1'

17' TO RT. EDGE PAVEMENT

S.L.M. 728+86



RECORD: 11-19-1973

STA. 727+70

R.R. SPK.

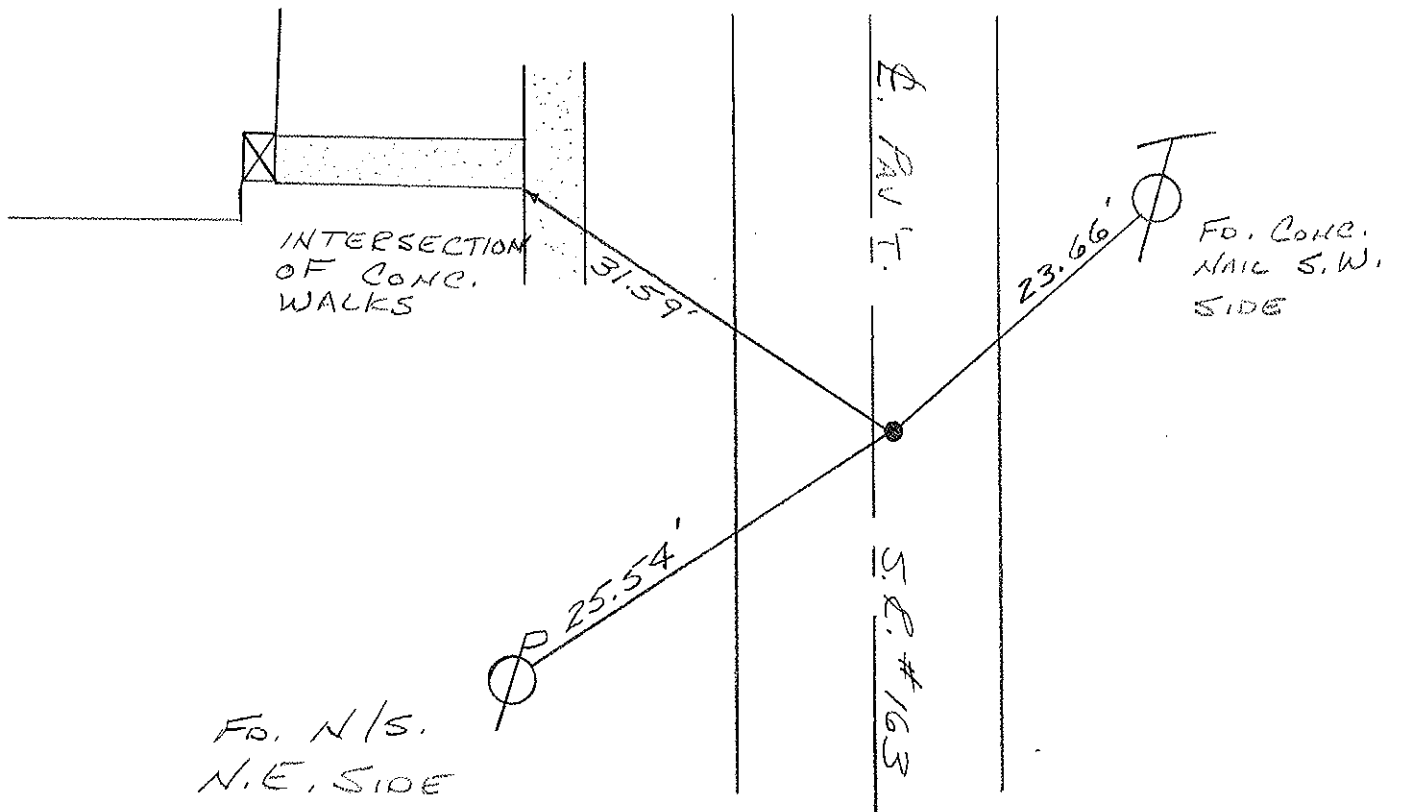
RESET P.K. NAIL

8-16-76

SET PK/WASHER

7-27-1993

RCC



PERSONNEL TITLE PERSONNEL TITLE

COUNTY Ottawa DATE 11-19-73

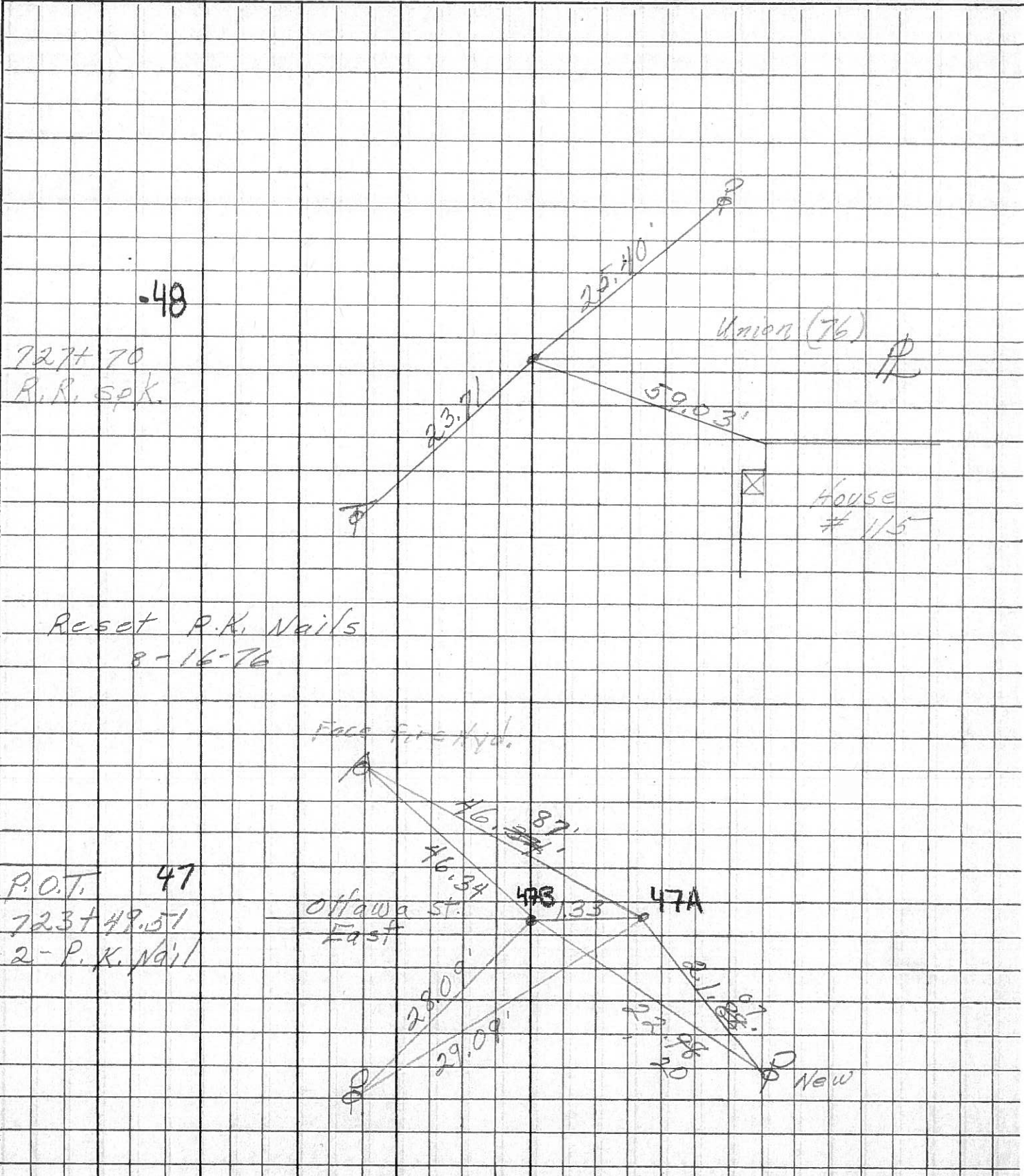
S. R. 163 WEATHER Cloudy

SEC. Oak Harbor TEMP. 50°

DESCRIPTION Sec 4 Salem Twp.

JOB NO.

LEFT CENTER LINE RIGHT



23

22