

O.D.O.T. DISTRICT 2 SURVEY OFFICE (USE ONLY)

PERSONNEL

REFERENCE NO. 49 A

SHEET 7 OF 74

NOTES ASTON  
 H.C. NIESE  
 R.C. AUBLE  
RHOADES

DATE 6/30/23  
 WEATHER HAZE  
 TEMP. 68°

ROUTE SR 163  
 COUNTY OTTAWA  
 TOWNSHIP SALEM  
 SECTION 5

DWG BY RHOADES PID 102952

T 6 N R 14 E

TYPE MONUMENT DRILL HOLE W/ "x"

ON SURFACE - ~~BELOW~~ ON

OFFSET ☉ PAVEMENT ON LT : RT

- TO - EDGE PAVEMENT

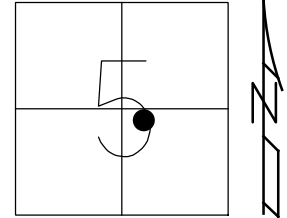
STATION: 728+97

HORZ.DATUM: NAD83 2011

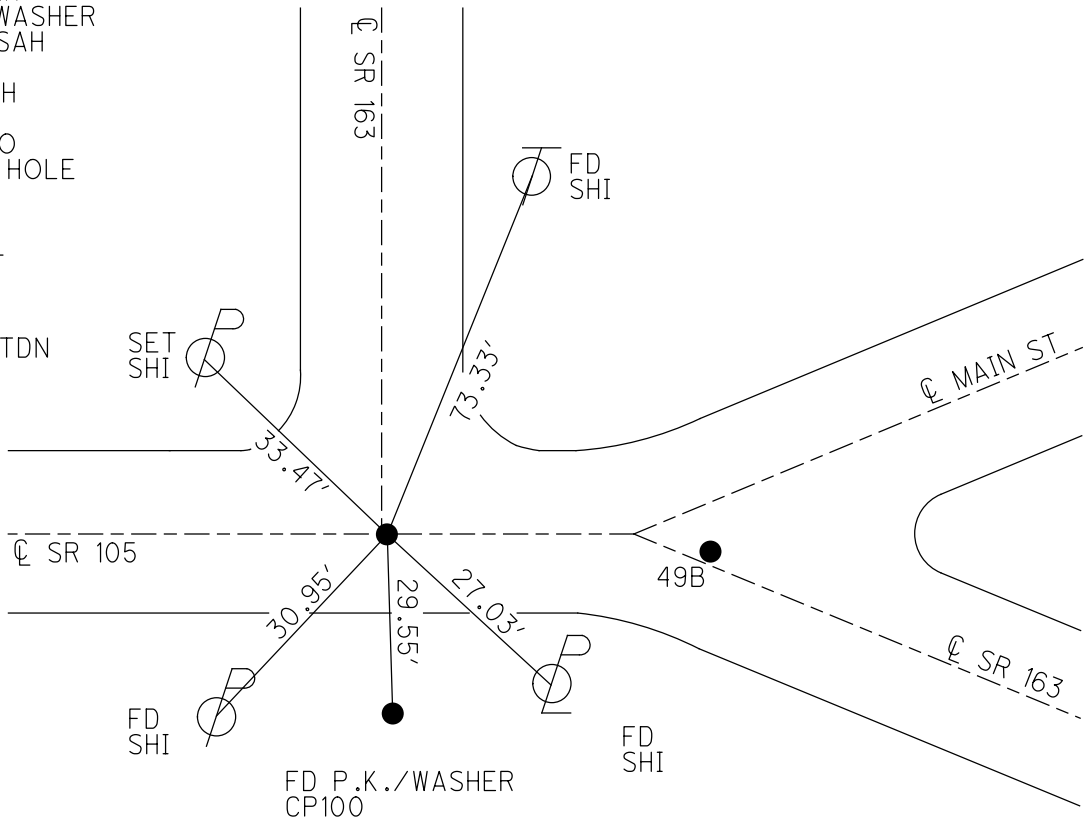
GEOID: NAVD88 2012A

GRID: NORTHING: 671630.238

EASTING: 1789520.744



RECORD:  
 FD P.K./WASHER  
 8-1-00, SAH  
 SET P.K./WASHER  
 11-28-00, SAH  
 DNF  
 5-4-16, DCH  
 DNF  
 7-6-17, JFO  
 SET DRILL HOLE  
 W/ "x"  
 REFA49  
 1-3-19, JLL  
 FD DRILLH  
 W/ "+"  
 REFA49  
 6/30/23, TDN



DIST. 49A-49B = 38.18'

O.D.O.T. DISTRICT 2 SURVEY OFFICE (USE ONLY)

PERSONNEL

REFERENCE NO. 49 A

SHEET 7 OF 74

NOTES MILLER  
 H.C. LEU  
 R.C. O'DONNELL

DATE 1-3-19  
 WEATHER CLOUDY  
 TEMP. 32°

ROUTE SR 163  
 COUNTY OTTAWA  
 TOWNSHIP SALEM  
 SECTION 5  
 T 6 N R 14 E

DWG BY JAMES PID 95757

TYPE MONUMENT DRILL HOLE W/ "x"

ON SURFACE - ~~BELOW~~ ON

OFFSET  $\varnothing$  PAVEMENT ON LT : RT

TO EDGE PAVEMENT

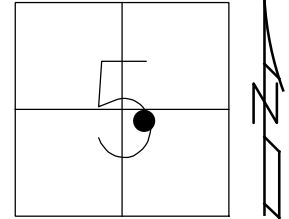
STATION: 728+97

HORZ.DATUM: NAD83 2011

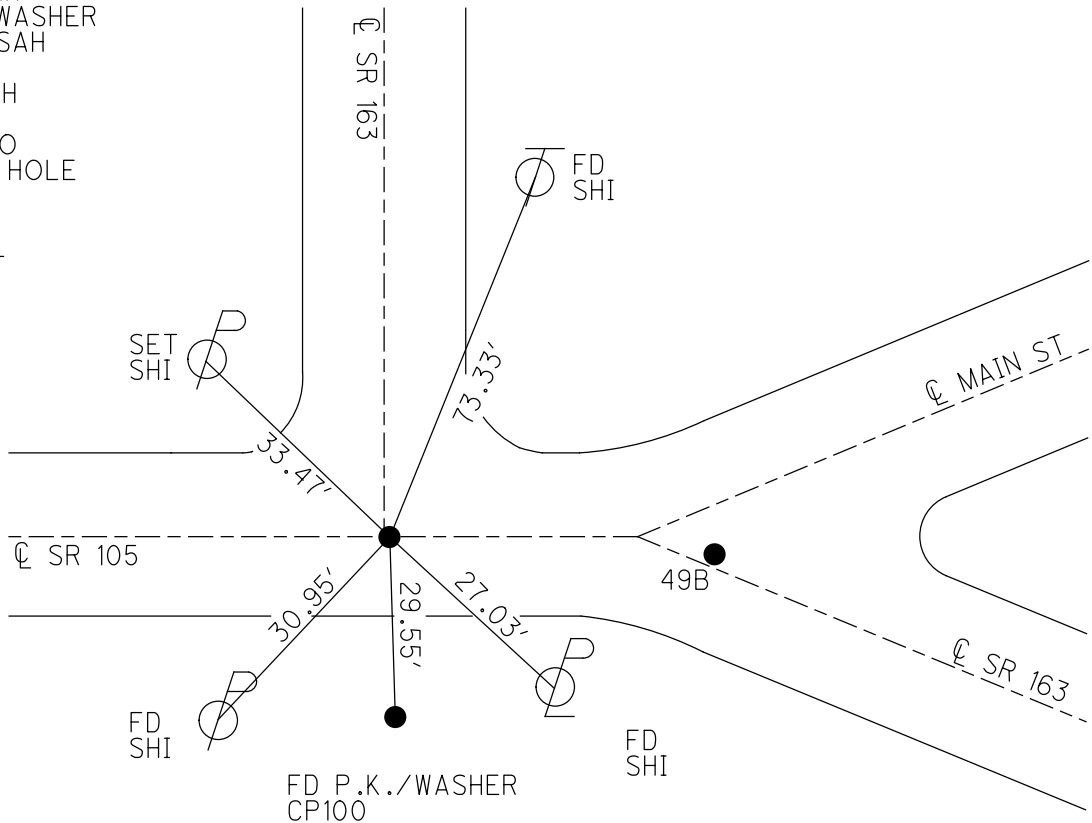
GEOID: NAVD88 2012A

GRID: NORTHING: 671630.245

EASTING: 1789520.837



RECORD:  
 FD P.K./WASHER  
 8-1-00, SAH  
 SET P.K./WASHER  
 11-28-00, SAH  
 DNF  
 5-4-16, DCH  
 DNF  
 7-6-17, JFO  
 SET DRILL HOLE  
 W/ "x"  
 REFA49  
 1-3-19, JLL



DIST. 49A-49B = 38.18'

# O.D.O.T. DISTRICT 2 SURVEY OFFICE

PERSONNEL

REFERENCE NO. 49

SHEET 3 OF 63

NOTES Huss

H.C. Cordes

R.C. Huss

DATE 8-1-00

WEATHER cloudy

TEMP. + 75° F

ROUTE 105-163

COUNTY Ottawa

TOWNSHIP Salem

SECTION 5

T6 N R 14 E

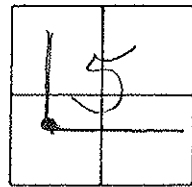
TYPE MONUMENT PK/w

ON SURFACE - ~~BLIND~~ surface

~~LEFT~~ - PAV'T. - ~~RIGHT~~ ♀

TO EDGE PAVEMENT

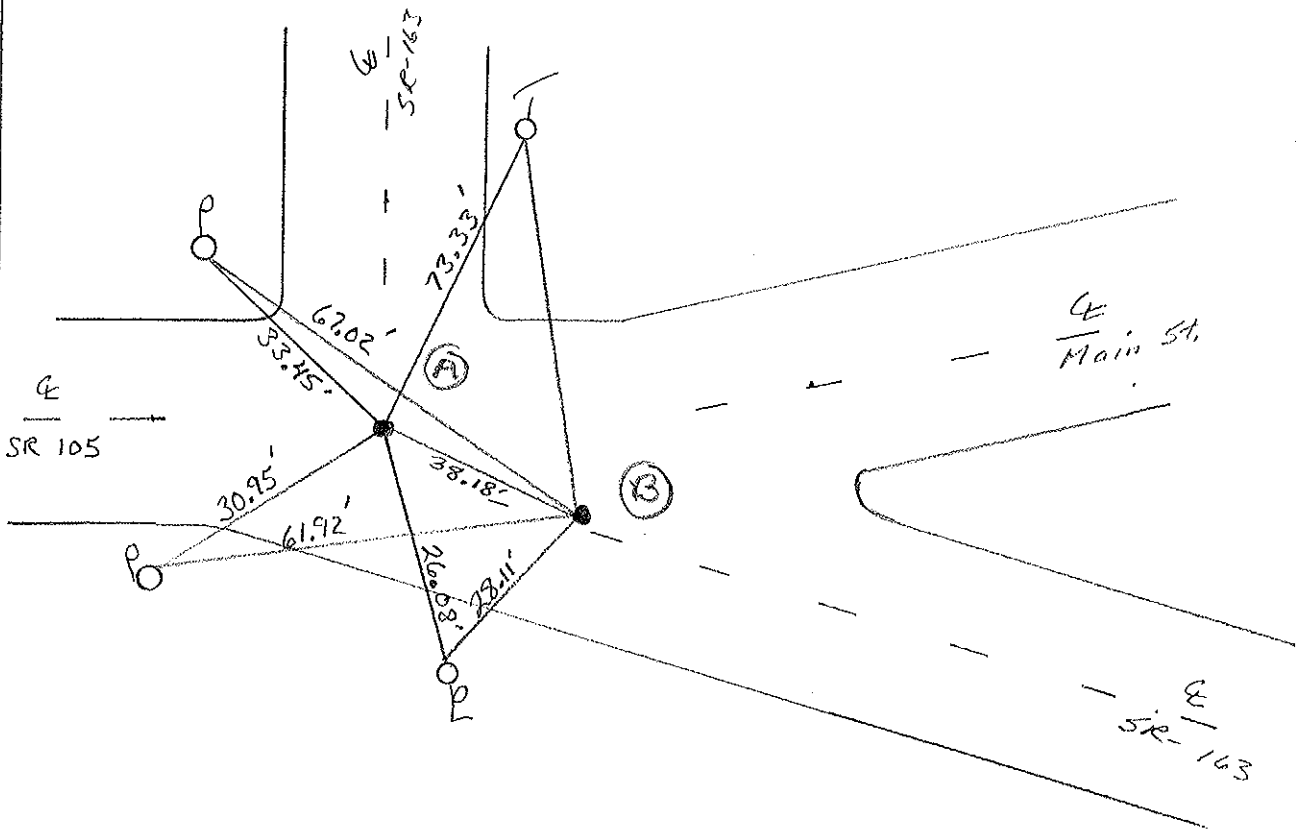
S.L.M. A = 728+97 B = 729+160 <sup>+35</sup>



Records:  
"A" = 729+48.41

Records:  
"B" = 3+75  
1936 PCH-1

Set PK/w  
both points  
11-28-00  
SAH



PERSONNEL TITLE PERSONNEL TITLE

COUNTY Ottawa DATE 11-19-73

S. R. 163 & 105 WEATHER Cloudy

SEC. Oak Harbor TEMP. 50°

DESCRIPTION Sec 4 Salem Twp. JOB NO.

LEFT CENTER LINE RIGHT

S.W. cor. conc. base R.R. flasher

N.W. cor. Foodliner

50



13th Brick up R.R. Track

13+41.1 (1934 Plan)

"+" in conc-  
Δ = 13° 46' LT.

Good ties  
set small spk.

34.46'

φ Brace pole

49B



Main St.

Res.

P.O.T. (1934 Plan)

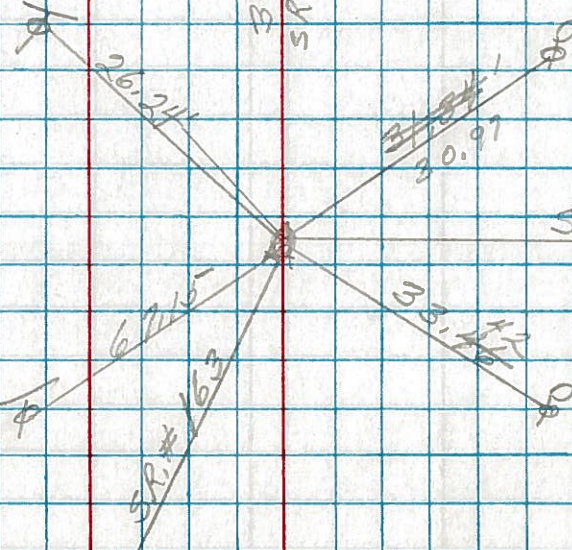
3+75 Top of bottom block  
"+" in conc-  
Good ties  
set small spk. (± Top bolt fire Hyd.)

Top of Bottom block of Foundation

38.24' S.R. # 163

P.I. 48  
729+ 48.41  
R.R. spk.

49A



New

S.R. # 105 West

Res of P.K. Nails  
8-16-76

PERSONNEL TITLE PERSONNEL TITLE

COUNTY Ottawa DATE 11-17-66

S. R. 163 WEATHER

SEC. Oak Harbor TEMP. 60°

DESCRIPTION Control Points JOB NO.

	LEFT		CENTER LINE		RIGHT	JOB NO.
729+ 48.41 P.K. Nail	5288	<b>(49)</b>				S.R. #105 West
P.O.T. 723+ 49.51	5287	<b>(47A)</b>				Ottawa St. 1.33' 2-P.K. Nails

PERSONNEL TITLE PERSONNEL TITLE

COUNTY Ottawa DATE 11-17-66

S. R. 163 WEATHER Fair

SEC. Oak Harbor TEMP. 60°

DESCRIPTION Sec 4 Salem Twp. JOB NO.

