





# O.D.O.T. DISTRICT 2 SURVEY OFFICE

PERSONNEL \_\_\_\_\_

REFERENCE NO. 49

SHEET 3 OF 63

NOTES Huss

H.C. Cordes

R.C. Huss

DATE 8-1-00

WEATHER cloudy

TEMP. + 75° F

ROUTE 105-163

COUNTY Ottawa

TOWNSHIP Salem

SECTION 5

T6 N R 14 E

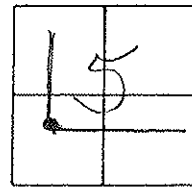
TYPE MONUMENT PK/w

ON SURFACE - ~~BLIND~~ surface

~~LEFT~~ - PAV'T. - ~~RIGHT~~ ♀

TO EDGE PAVEMENT

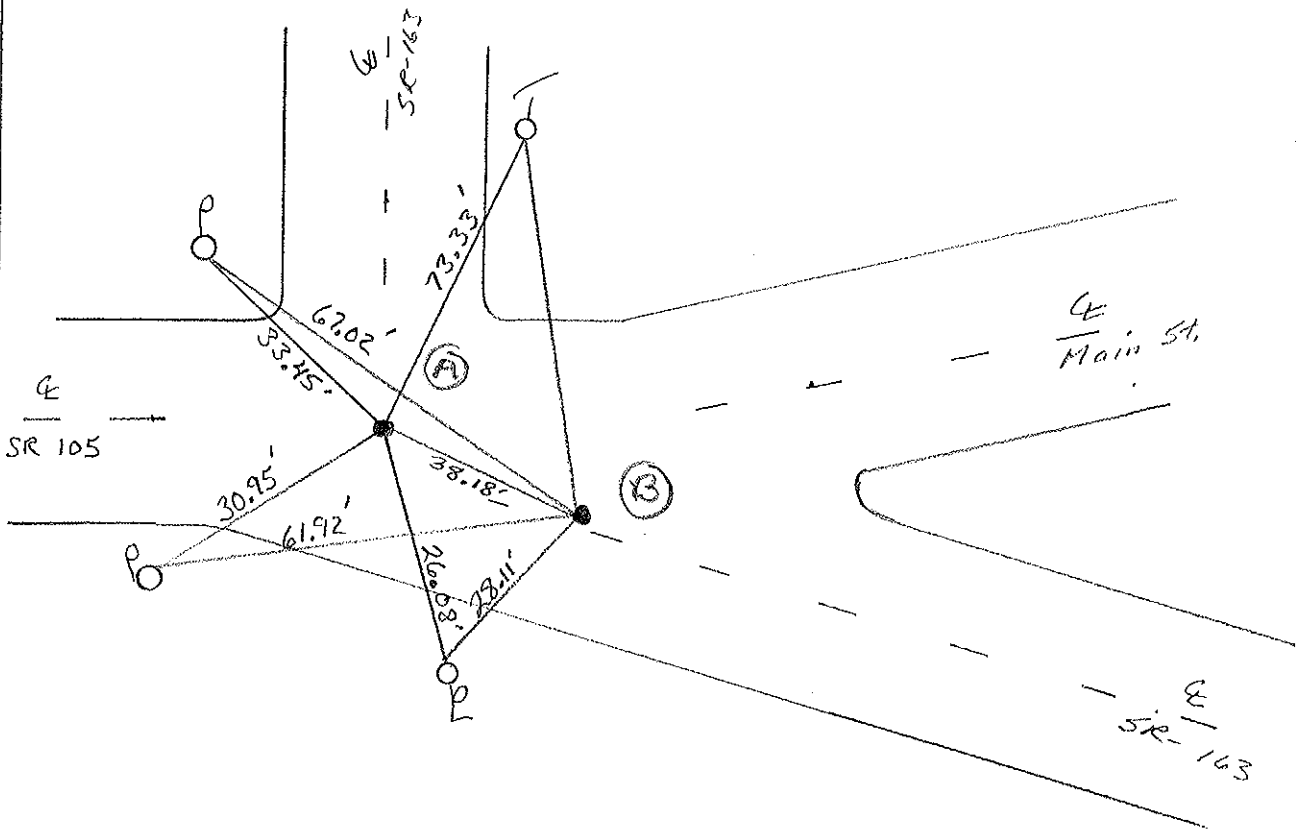
S.L.M. A = 728+97 B = 729+160 <sup>+35</sup>



Records:  
"A" = 729+48.41

Records:  
"B" = 3+75  
1936 pcd-1

Set PK/w  
both points  
11-28-00  
SAH



PERSONNEL TITLE PERSONNEL TITLE

COUNTY Ottawa DATE 11-19-73

S. R. 163 & 105 WEATHER Cloudy

SEC. Oak Harbor TEMP. 50°

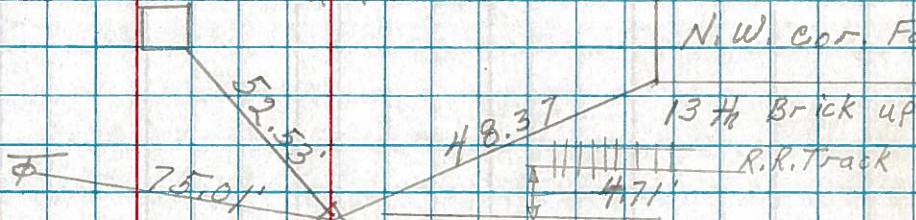
DESCRIPTION Sec 4 Salem Twp. JOB NO.

LEFT CENTER LINE RIGHT

S.W. cor. conc. base R.R. flasher

N.W. cor. Foodliner

50



13 1/4 Brick up R.R. Track

24

13+41.1 (1934 Plan)

"+" in conc-

Δ = 130° 46' LT.

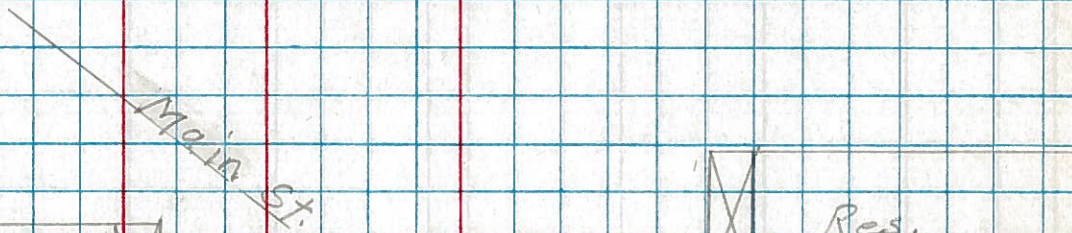
Good ties

set small spk.

34.46'

φ Brace pole

49B



Res.

25

P.O.T.

Res.

(1934 Plan)

3+75

Top of bottom block

"+" in conc-

Good ties

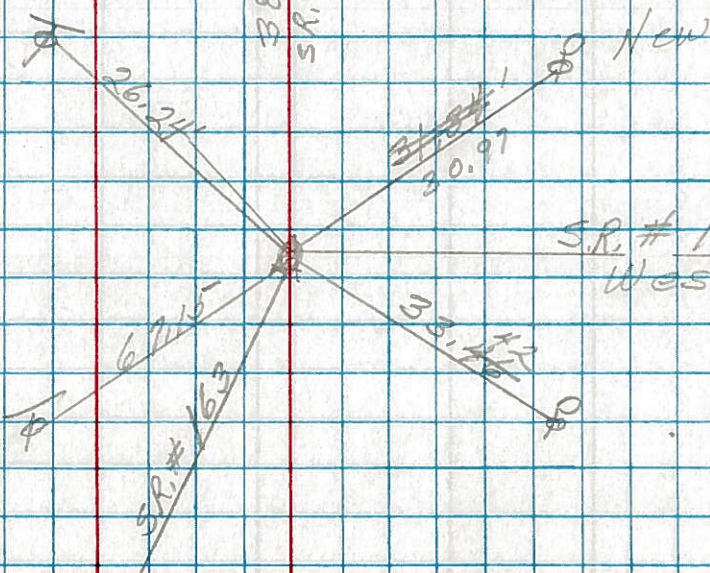
set small spk. (± Top bolt fire Hyd.)

Top of Bottom block of Foundation

38.24' S.R. # 163

48

49A



New

S.R. # 105 West

26

P.I.

729+48.41

R.R. spk.

Res of P.K. Nails

8-16-76