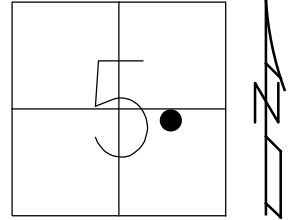


O.D.O.T. DISTRICT 2 SURVEY OFFICE (USE ONLY)

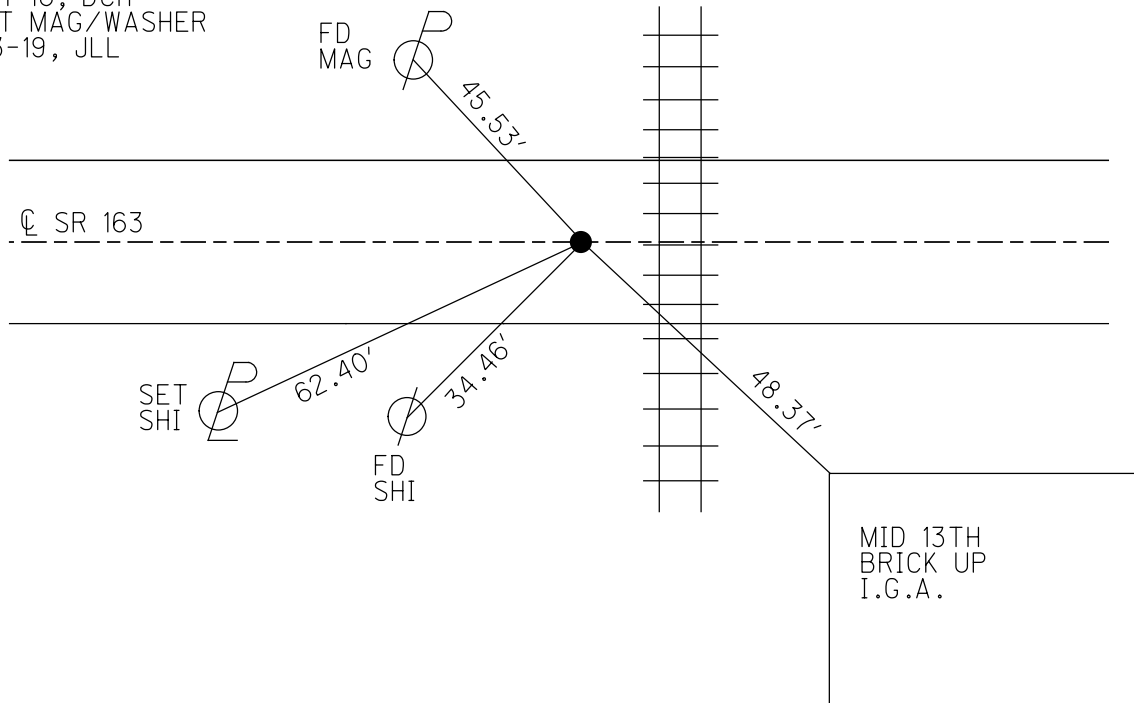
PERSONNEL _____ REFERENCE NO. 50 SHEET 9 OF 74
 NOTES MILLER DATE 1-3-19 ROUTE SR 105
 H.C. LEU WEATHER CLOUDY COUNTY OTTAWA
 R.C. O'DONNELL TEMP. 32° TOWNSHIP SALEM
 _____ SECTION 5
 DWG BY JAMES PID 95757 T 6 N R 14 E

TYPE MONUMENT MAG/WASHER
 ON SURFACE - ~~BELOW~~ ON
 OFFSET Q PAVEMENT 4' ~~LT~~ : RT
- TO - EDGE PAVEMENT
 STATION: 739+01



HORZ.DATUM: - GEOID: -
 GRID: NORTHING: _____ EASTING: _____

RECORD:
 Δ= 13° 46' LT
 STA 13+41.1
 SET SMALL RR SPK
 1936 PLAN
 FD SMALL RR SPK
 8-1-00, SAH
 SET P.K./WASHER
 11-29-00, SAH
 CALC50-PDOT SET
 5-4-16, DCH
 SET MAG/WASHER
 1-3-19, JLL



O.D.O.T. DISTRICT 2 SURVEY OFFICE

PERSONNEL

REFERENCE NO. 50

SHEET 4 OF 63

NOTES Huss

H.C. Condes

R.C. Huss

DATE 8-1-00

WEATHER Cldy

TEMP. +75°F

ROUTE 105-163

COUNTY Ottawa

TOWNSHIP Salem

SECTION 5

T 6 N 14 E

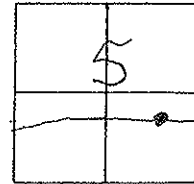
TYPE MONUMENT Small RR spk

~~ON SURFACE~~ - (BELOW) ±0.2'

~~VERT. PLANT.~~ - (RIGHT) 4' rt

TO EDGE PAVEMENT

S.L.M. 573+53 (105 Sta.)

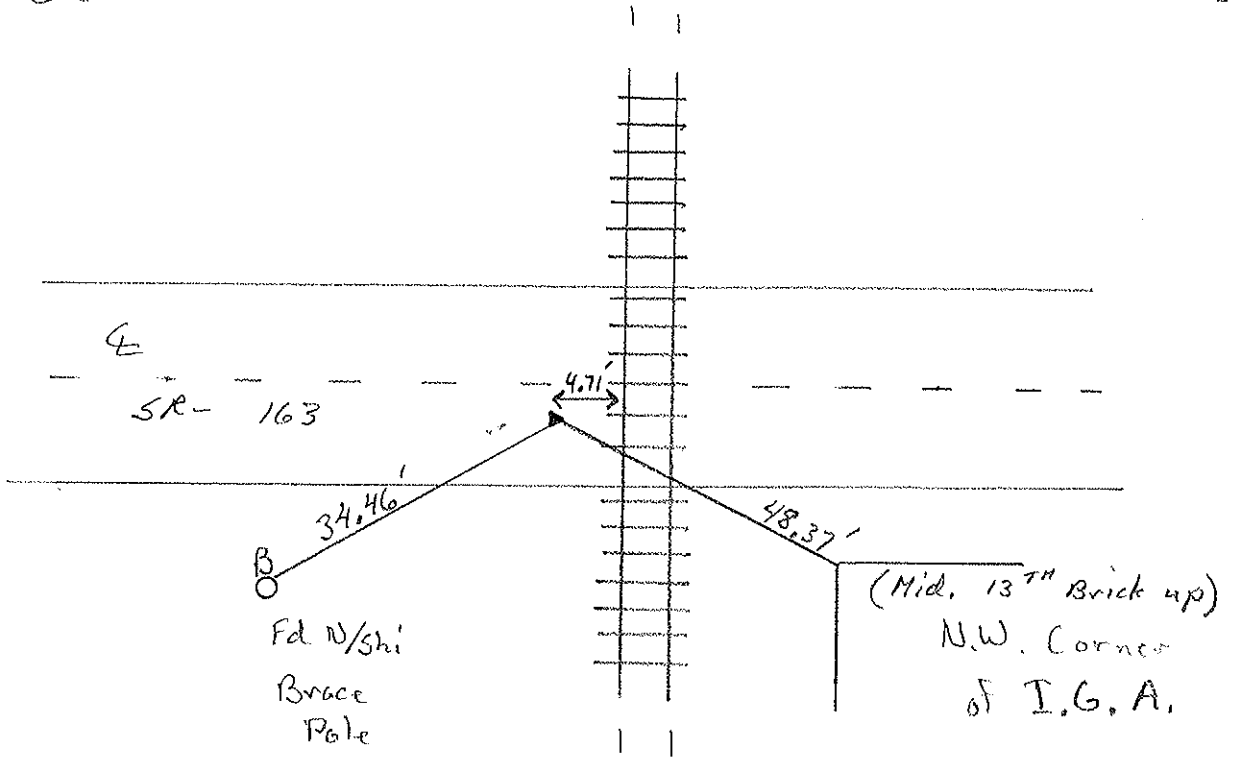


Record:

Sta 13+41.1 (1936 Plan)
 "+" in conc.
 $\Delta = 13^{\circ} 46' \text{ LT}$
 Set Small RR Spk

(739+01 SR 163 station)

Set PK/W
 11-29-00
 SAH



PERSONNEL TITLE PERSONNEL TITLE

COUNTY Ottawa DATE 11-19-73

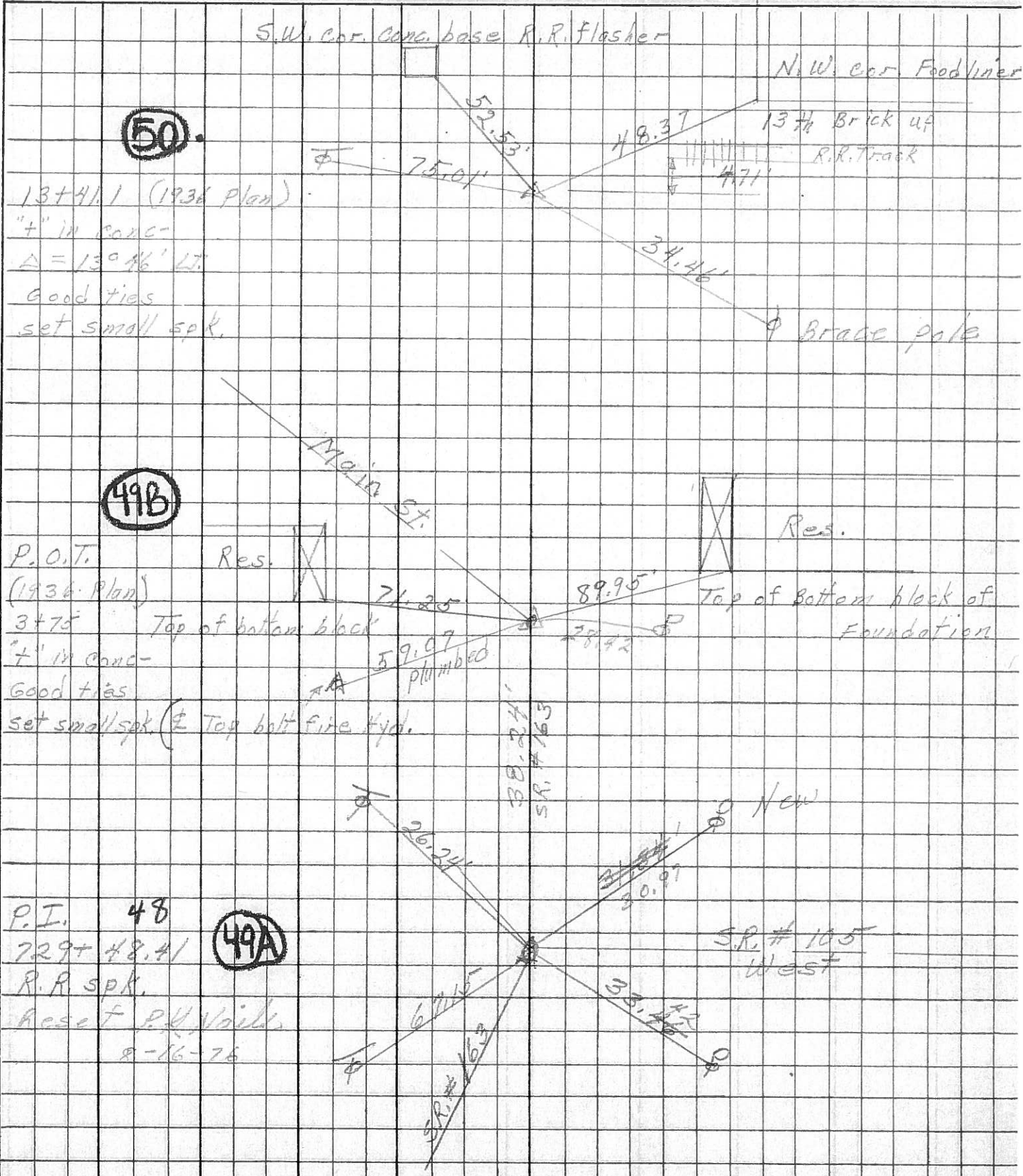
S. R. 163 & 105 WEATHER Cloudy

SEC. Oak Harbor TEMP. 50°

DESCRIPTION Sec 4 Salem Twp.

JOB NO.

LEFT CENTER LINE RIGHT



50

24

13+41.1 (1936 Plan)
 "+" in conc-
 $\Delta = 13^{\circ} 46' LT.$
 Good ties
 set small spk.

49B

25

P.O.T. Res.
 (1936 Plan)
 3+75 Top of bottom block
 "+" in conc-
 Good ties
 set small spk. (Top bolt fire hyd.)

49A

24

P.I. 48
 729+48.41
 R.R. spk.
 Res. of P.H. Vails
 8-16-76

New
 SR. # 105
 West