

O.D.O.T. DISTRICT 2 SURVEY OFFICE (USE ONLY)

PERSONNEL

REFERENCE NO. 50 A

SHEET 10 OF 74

NOTES O'DONNELL

DATE 7-6-17

ROUTE SR 163

H.C. LEU

WEATHER CLOUDY

COUNTY OTTAWA

R.C. POORE

TEMP. 70°

TOWNSHIP SALEM

CARSON

DWG BY JAMES

PID 95757

SECTION 5

T 6 N R 14 E

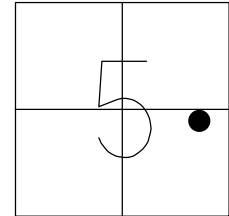
TYPE MONUMENT P.K./WASHER

ON SURFACE - ~~BELOW~~ ON

OFFSET \varnothing PAVEMENT ON LT : RT

- TO - EDGE PAVEMENT

STATION: 745+81



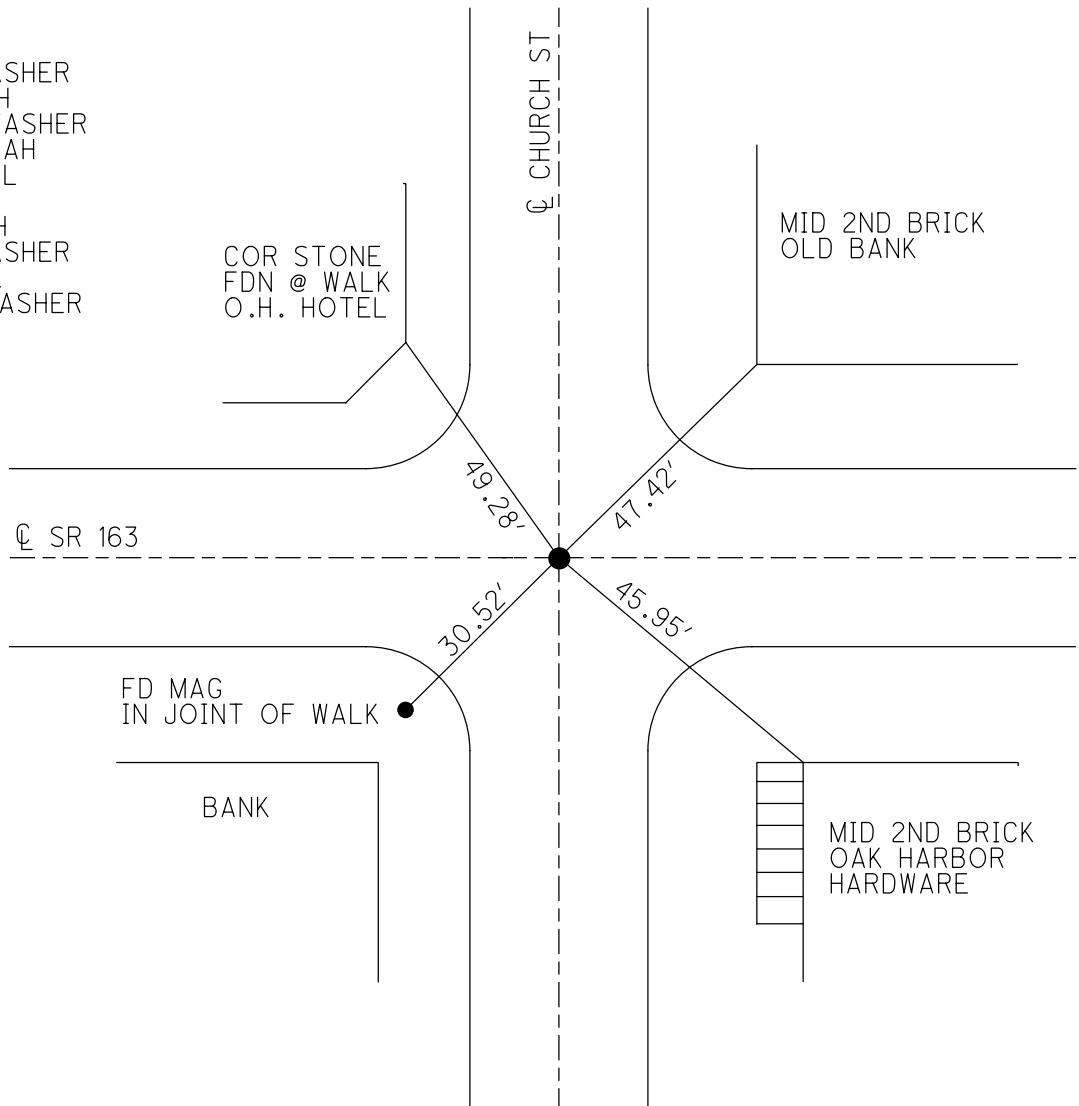
HORZ.DATUM: NAD83 2011

GEOID: NAVD88 2012A

GRID: NORTHING: 671383.618

EASTING: 1791173.152

RECORD:
 FD P.K./WASHER
 8-1-00, SAH
 SET P.K./WASHER
 11-29-00, SAH
 FD MAG NAIL
 REF50A
 5-4-16, DCH
 FD P.K./WASHER
 7-6-17, JLL
 SET MAG/WASHER
 1-3-19, JLL



O.D.O.T. DISTRICT 2 SURVEY OFFICE

PERSONNEL

REFERENCE NO. 50 A

SHEET 5 OF 63

NOTES Huss

H.C. Cordes

R.C. Huss

DATE 8-1-00

WEATHER Clody

TEMP. +75°F

ROUTE 105-163

COUNTY Ottawa

TOWNSHIP Salem

SECTION 5

T 6 N 14 E

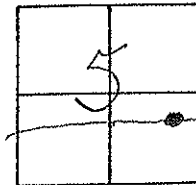
TYPE MONUMENT PK/W

ON SURFACE - BELOW Surface.

~~PAV'T.~~ E Pav.

TO EDGE PAVEMENT

S.L.M. 580+34 (105 Sta)



(745+81 SR 163)

Set PK/W
11-29-00
SAH

O.H.
Hotel

W
Church St.

Old
Bank

49.37'

47.39'

SR - 163

SR-163

29.50'

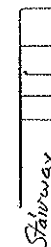
45.89'

Crosscut
curb inlet

Set W/shi
in joint on
sidewalk

Bank

W
Church St.



Oak
Harbor
Hardware

PERSONNEL TITLE PERSONNEL TITLE

COUNTY Ottawa

DATE Aug. 1968

S. R. 163

WEATHER

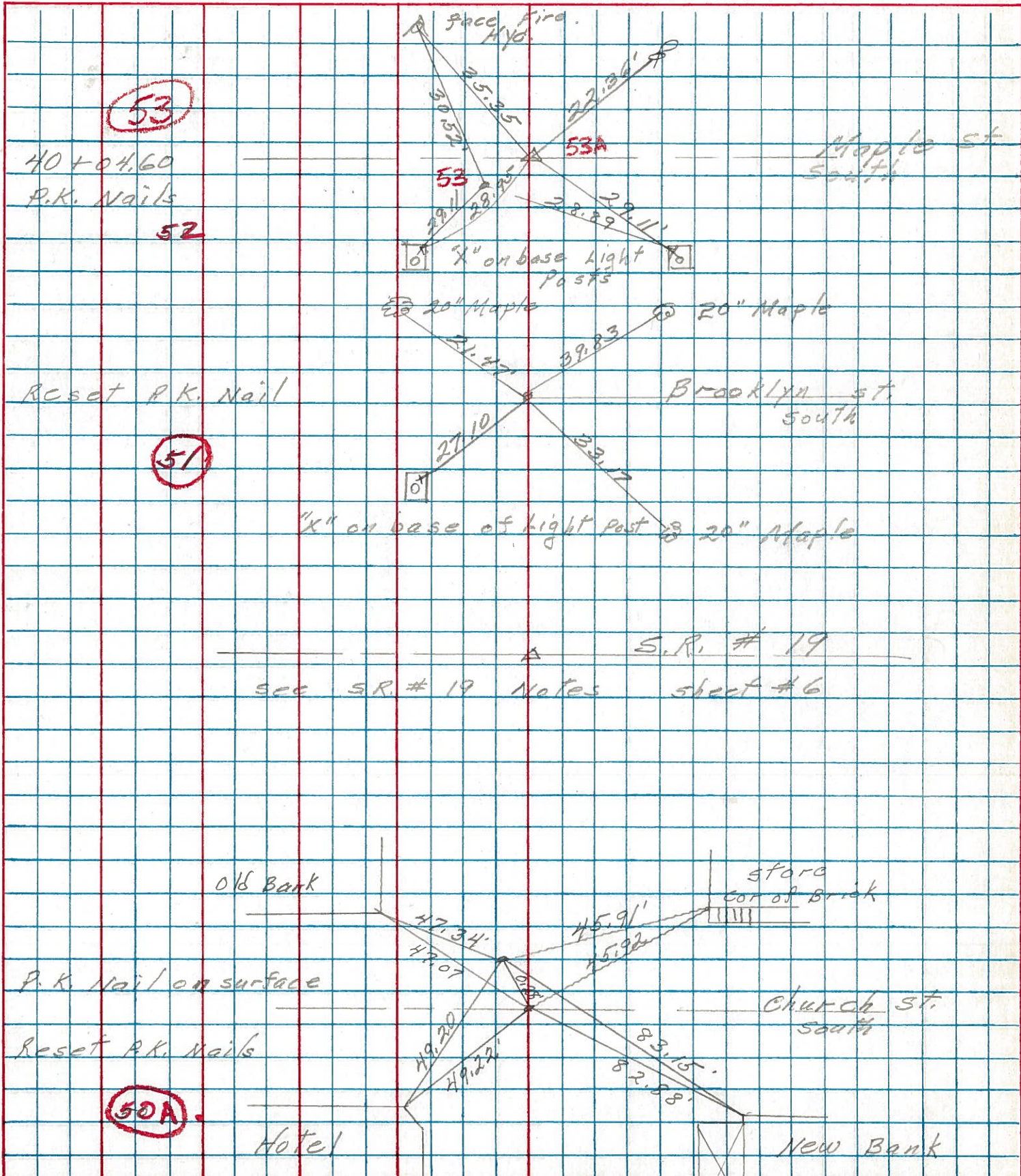
SEC. Oak Harbor

TEMP.

DESCRIPTION sec 4 Salem Twp.

JOB NO.

LEFT CENTER LINE RIGHT



PERSONNEL TITLE PERSONNEL TITLE

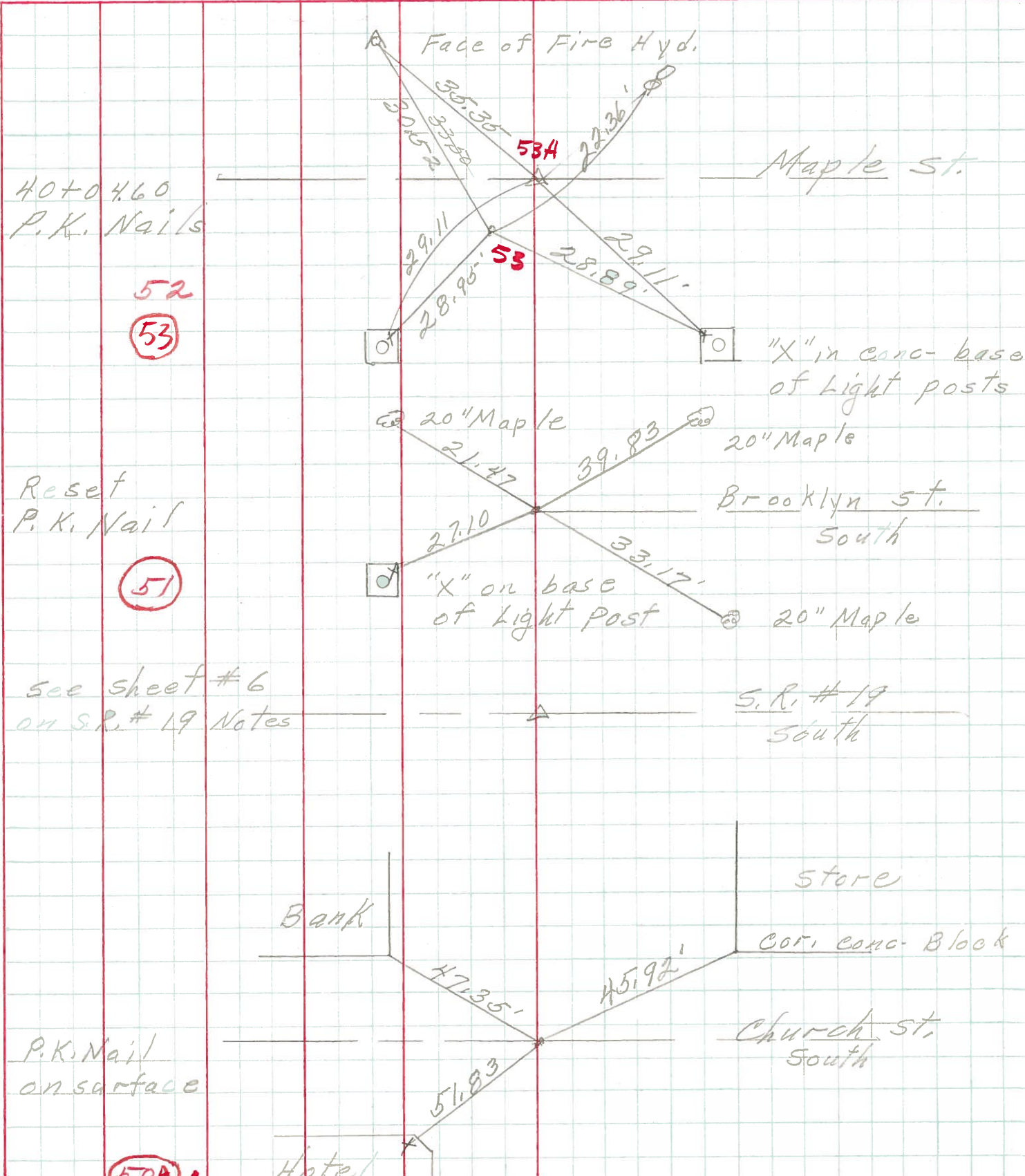
COUNTY Ottawa DATE Aug. 1968

S. R. 163 WEATHER

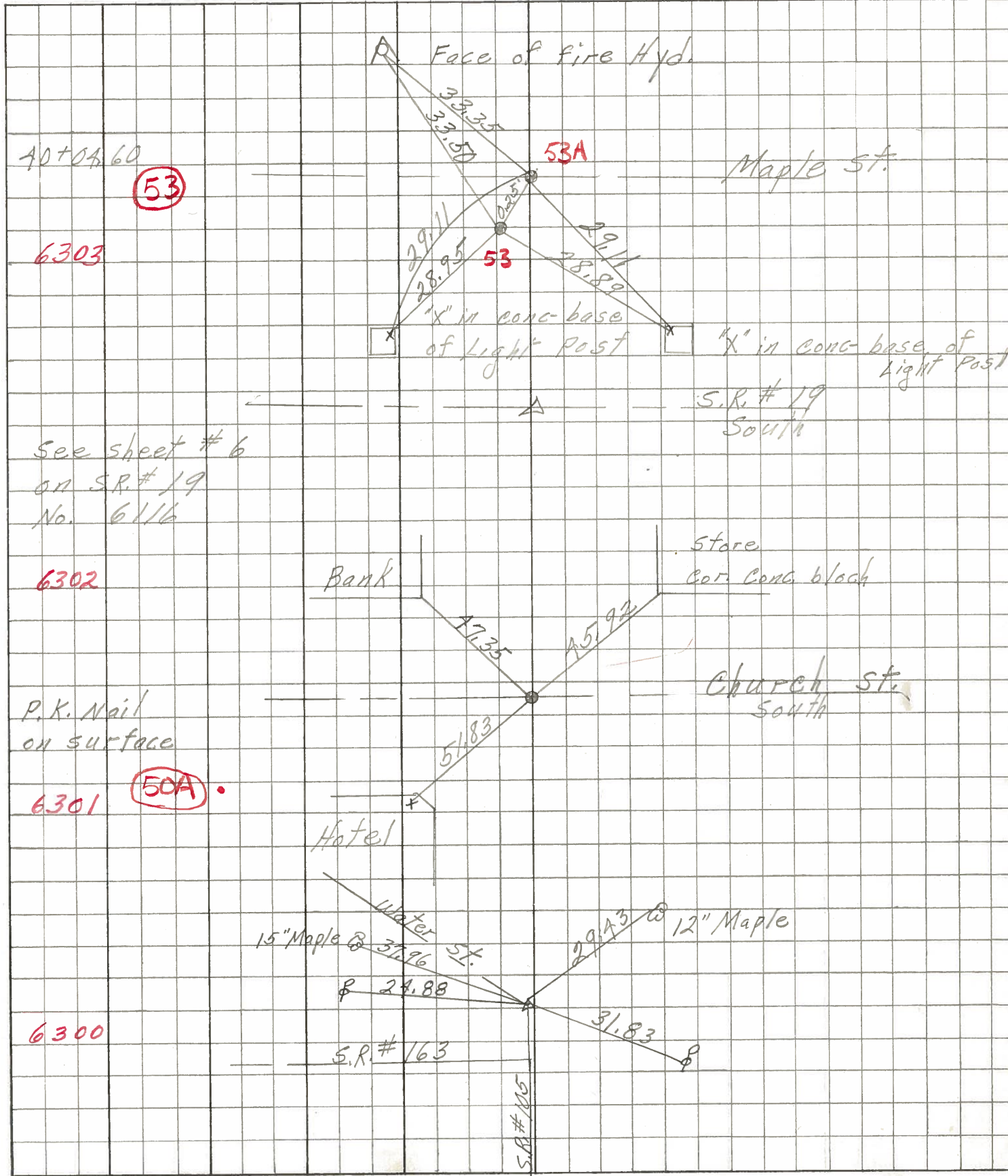
SEC. Oak Harbor TEMP.

DESCRIPTION Sec 4 salem Twp. JOB NO.

LEFT CENTER LINE RIGHT



PERSONNEL	TITLE	PERSONNEL	TITLE	COUNTY	DATE	S. R.	WEATHER	SEC.	TEMP.	DESCRIPTION	JOB NO.
Schneider		Potts		Ottawa	Aug. 68	163		0 Harbor		Ties for Contro	
Mosser											
Barbour											
Redding											



PERSONNEL TITLE PERSONNEL TITLE

COUNTY Ottawa

DATE Feb 19, 1964

Krabalk

Kowaleski

Geyman

Bruggeman

S. R. # 163

WEATHER

SEC.

TEMP.

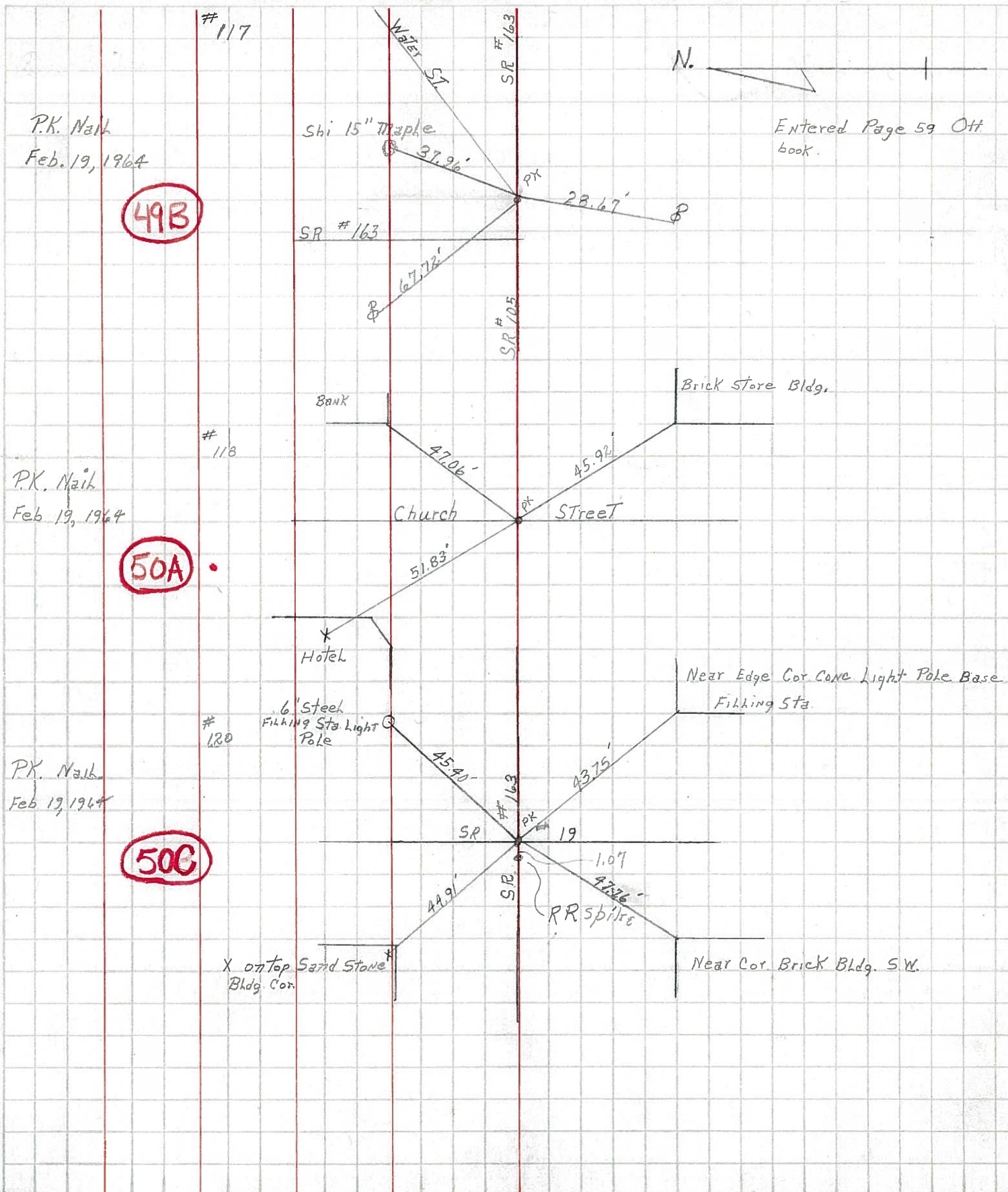
DESCRIPTION OAK Harbor M07 Locations

JOB NO.

LEFT

CENTER LINE

RIGHT



49B

50A

50B

Entered Page 59 Ott book.

