

O.D.O.T. DISTRICT 2 SURVEY OFFICE (USE ONLY)

PERSONNEL

REFERENCE NO. 50 B

SHEET 11 OF 74

NOTES O'DONNELL

DATE 7-6-17

ROUTE SR 163

H.C. LEU

WEATHER CLOUDY

COUNTY OTTAWA

R.C. POORE

TEMP. 70°

TOWNSHIP SALEM

CARSON

DWG BY JAMES PID 95757

SECTION 5

T 6 N R 15 E

TYPE MONUMENT MAG/WASHER

ON SURFACE - ~~BELOW~~ ON

OFFSET \varnothing PAVEMENT 1.22' ~~LT~~ : RT

- TO - EDGE PAVEMENT

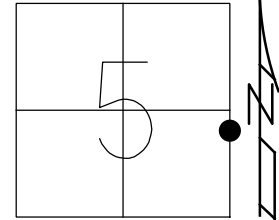
STATION: 752+39

HORZ.DATUM: NAD83 2011

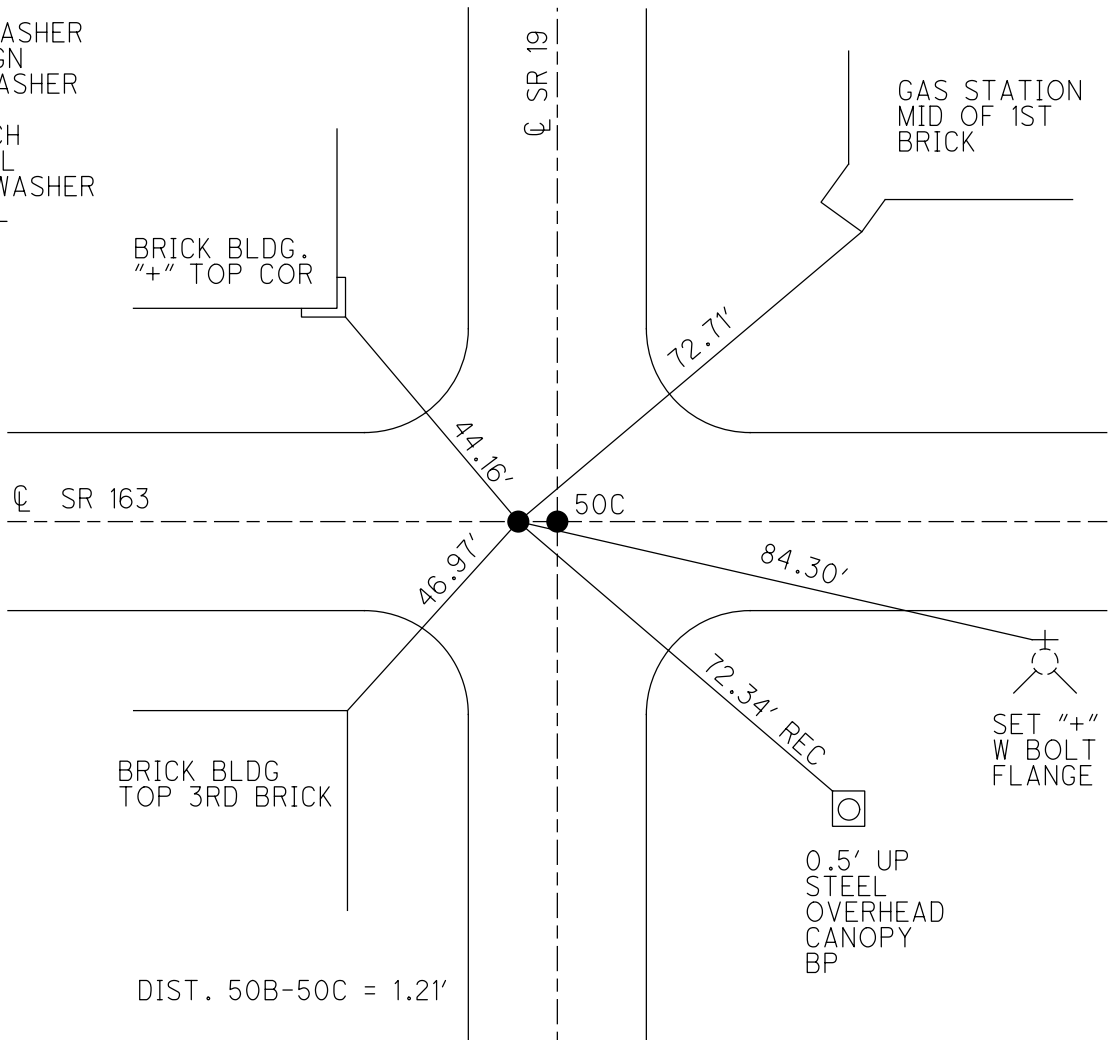
GEOID: NAVD88 2012A

GRID: NORTHING: 671376.475

EASTING: 1791828.538



RECORD:
 FD P.K./WASHER
 1-9-06, RGN
 FD MAG/WASHER
 REFB50
 5-4-16, DCH
 7-6-17, JLL
 SET MAG/WASHER
 1-3-19, JLL



O.D.O.T. DISTRICT 2 SURVEY OFFICE

PERSONNEL _____

REFERENCE NO. 50B+50C
18+18A

SHEET 6 OF 63

NOTES Huss

H.C. Condes

R.C. Huss

DATE 8-1-00

WEATHER Clidy-Fair

TEMP. +75° F

ROUTE 163

COUNTY Ottawa

TOWNSHIP Salem

SECTION 4

T 6 N R 15 E

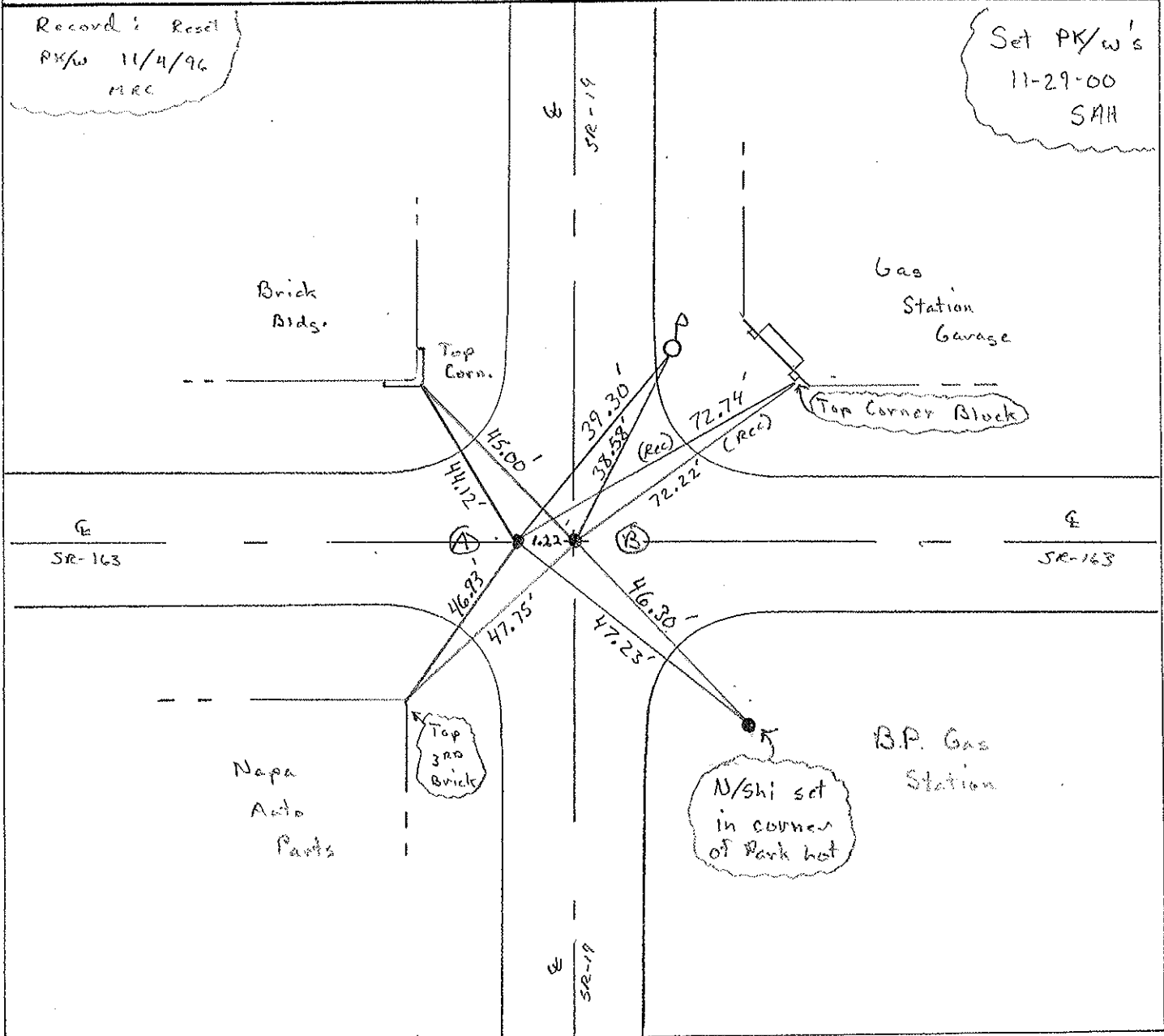
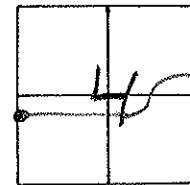
TYPE MONUMENT (A)+(B) PK/w's

ON SURFACE - ~~BELOW~~ surface

~~TO~~ - PAV'T. - ~~RIGHT~~ Pav't.

TO EDGE PAVEMENT

S.L.M. (A) - 752+39 (B) - 752+40 (163 Sta)



Record & Reset
PK/w 11/4/96
MRC

Set PK/w's
11-29-00
SAH

PERSONNEL TITLE PERSONNEL TITLE

COUNTY Ottawa

DATE Feb. 19, 1963

Krabihh

Xovaleski

S. R. # 163

WEATHER

Geyman

SEC. E-2 (pt)

TEMP.

Bruggeman

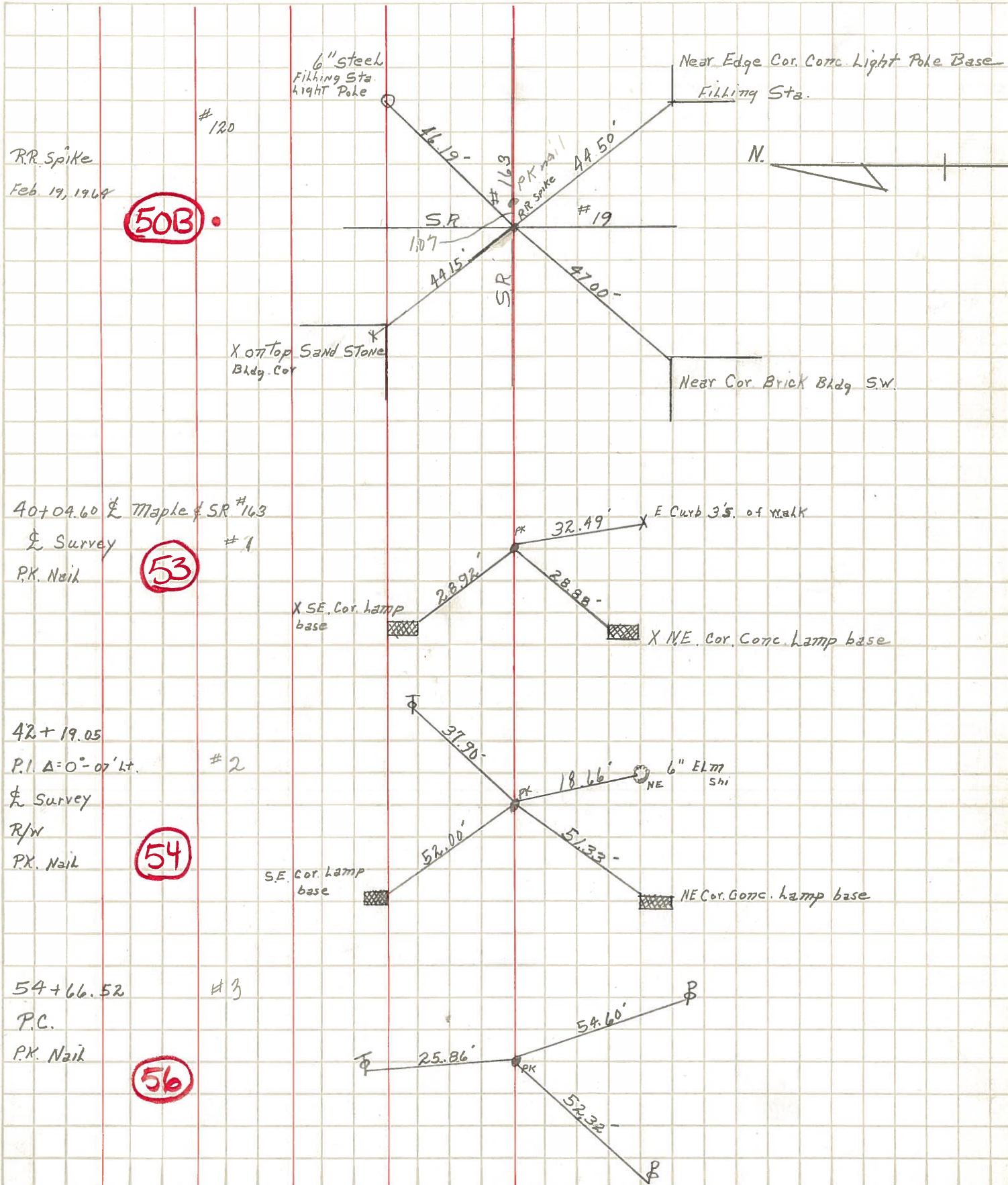
DESCRIPTION Oak Harbor Mon. Locations East

JOB NO.

LEFT

CENTER LINE

RIGHT



50B

53

54

56

RR Spike
Feb. 19, 1964

40+09.60 & Maple & SR #163
& Survey
P.K. Nail

42+19.05
P.I. Δ=0°-07' Lt.
& Survey
R/W
P.K. Nail

54+66.52
P.C.
P.K. Nail

#120

#1

#2

#3

SR
1307

#163

#19

N.