

O.D.O.T. DISTRICT 2 SURVEY OFFICE (USE ONLY)

PERSONNEL

REFERENCE NO. 50 C

SHEET 12 OF 74

NOTES O'DONNELL

DATE 7-6-17

ROUTE SR 163

H.C. LEU

WEATHER CLOUDY

COUNTY OTTAWA

R.C. POORE

TEMP. 70°

TOWNSHIP SALEM

CARSON

SECTION 5

DWG BY JAMES

PID 95757

T 6 N R 15 E

TYPE MONUMENT MAG/WASHER

ON SURFACE - ~~BELOW~~ ON

OFFSET ☉ PAVEMENT ON LT : RT

- TO - EDGE PAVEMENT

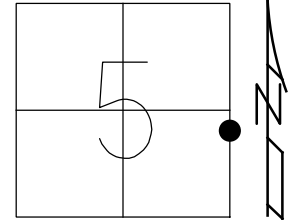
STATION: 752+40

HORZ. DATUM: NAD83 2011

GEOID: NAVD88 2012A

GRID: NORTHING: 671376.338

EASTING: 1791829.742



RECORD:

ORIGIN UNKNOWN

1/2" IPIN

2" DOWN

FD P.K./WASHER

1-9-06, RGN

FD MAG/WASHER

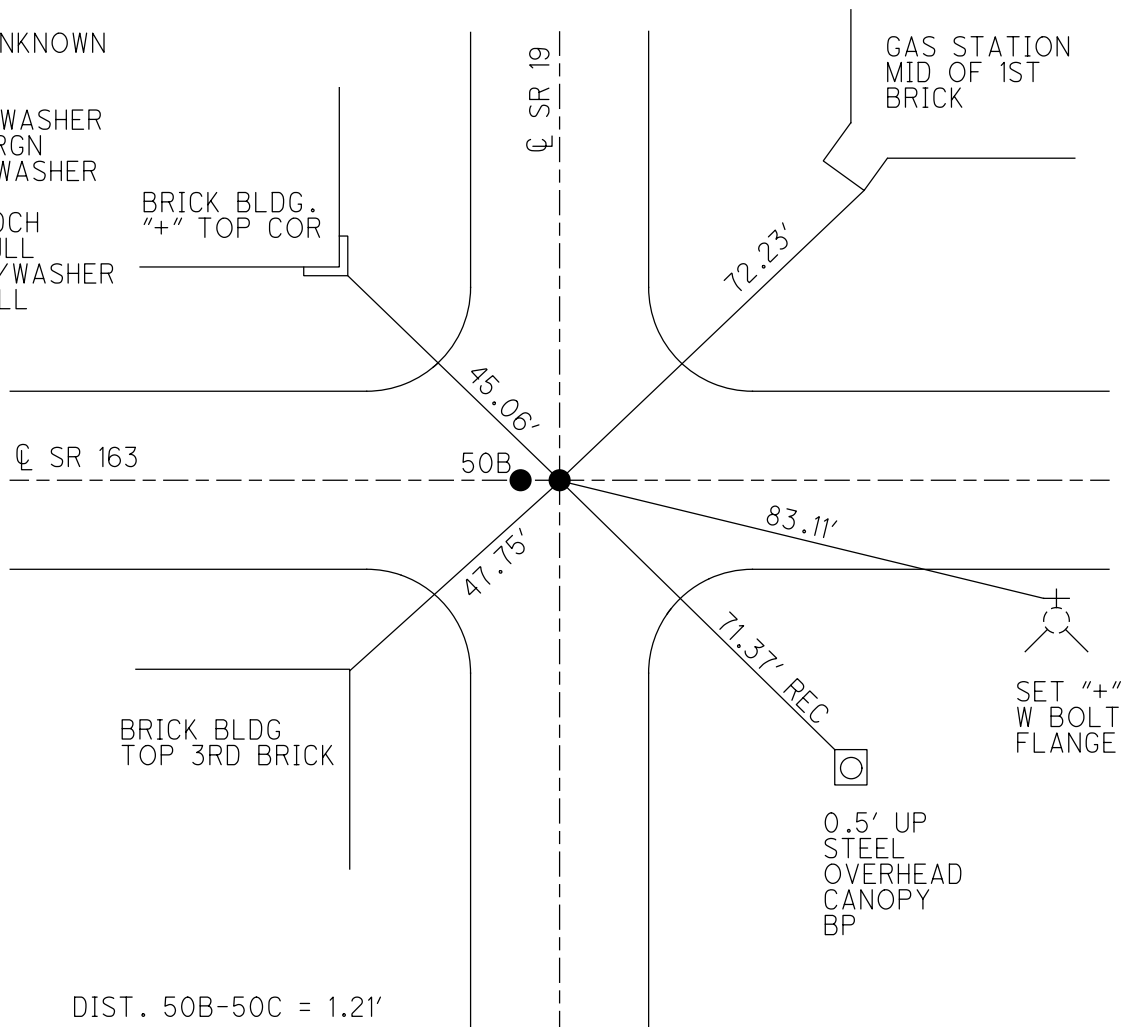
REFC50

5-4-16, DCH

7-6-17, JLL

SET MAG/WASHER

1-3-19, JLL



O.D.O.T. DISTRICT 2 SURVEY OFFICE

PERSONNEL _____

REFERENCE NO. 50B+50C
18+18A

SHEET 6 OF 63

NOTES Huss

H.C. Condes

R.C. Huss

DATE 8-1-00

WEATHER Clidy - Fair

TEMP. +75° F

ROUTE 163

COUNTY Ottawa

TOWNSHIP Salem

SECTION 4

T 6 N R 15 E

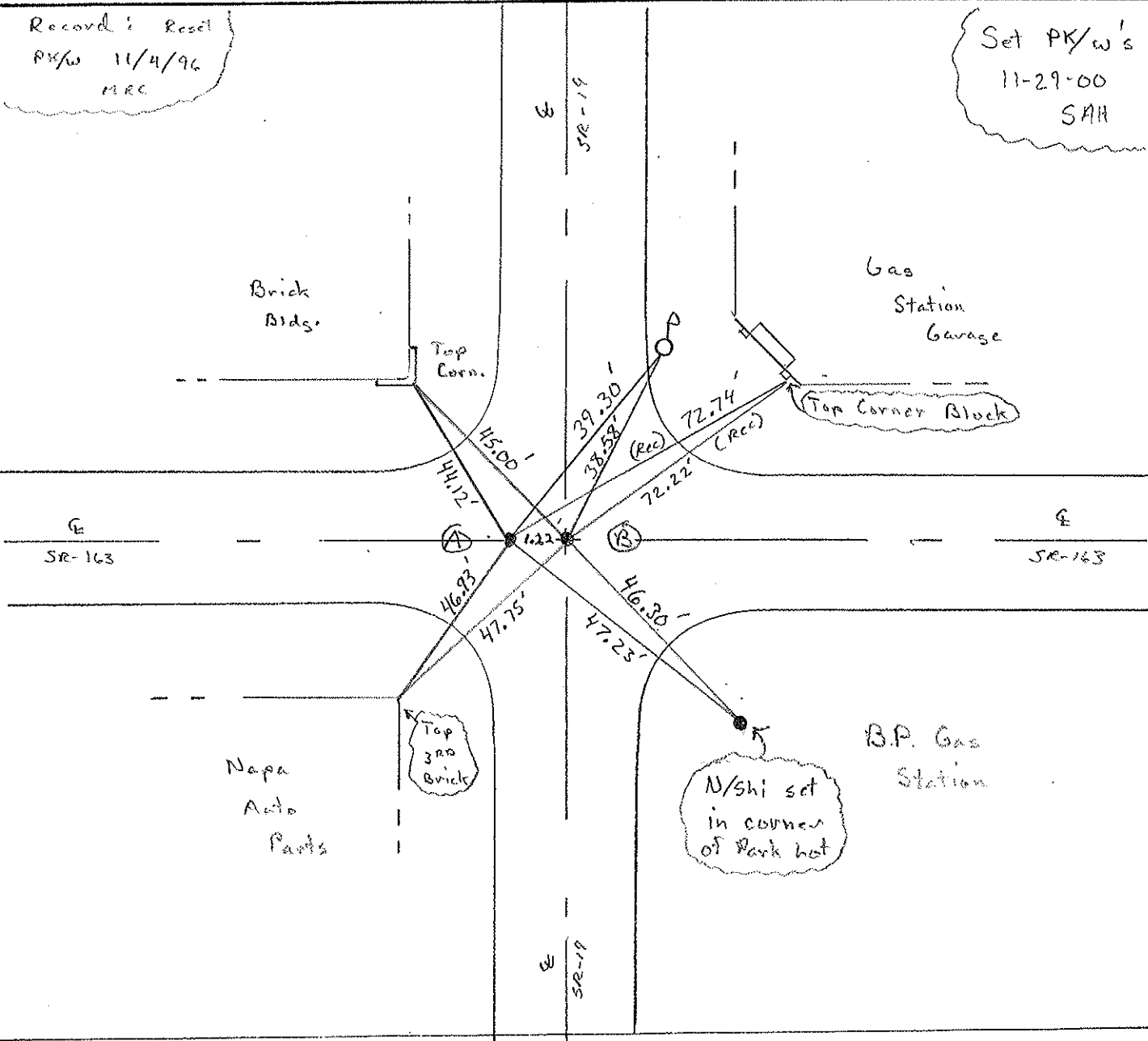
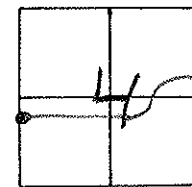
TYPE MONUMENT (A)+(B) PK/w's

ON SURFACE - ~~BELOW~~ surface

~~TO~~ - PAV'T. - ~~RIGHT~~ Pav't.

TO EDGE PAVEMENT

S.L.M. (A) - 752+39 (B) - 752+40 (163 Sta)



PERSONNEL TITLE PERSONNEL TITLE

COUNTY Ottawa

DATE Feb. 19, 1964

Krabill

Kowaleski

Geymann

Bruggemann

S. R. # 163

WEATHER _____

SEC. _____

TEMP. _____

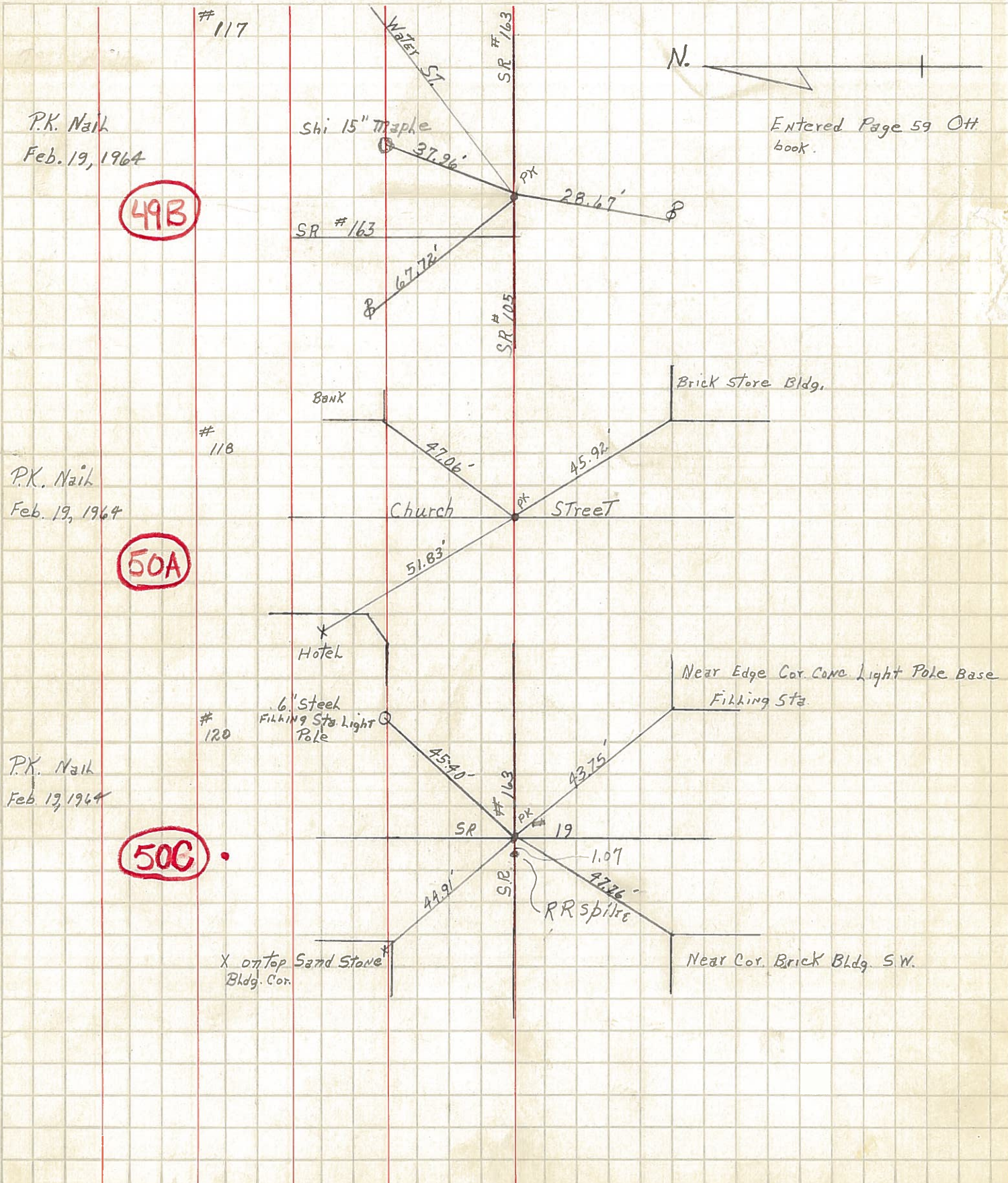
DESCRIPTION OAK Harbor M07 Locations

JOB NO. _____

LEFT

CENTER LINE

RIGHT



P.K. Nail
Feb. 19, 1964

49B

P.K. Nail
Feb. 19, 1964

50A

P.K. Nail
Feb. 19, 1964

50G

Entered Page 59 Ott
book.