

O.D.O.T. DISTRICT 2 SURVEY OFFICE (USE ONLY)

PERSONNEL

REFERENCE NO. 53

SHEET 15 OF 74

NOTES O'DONNELL
 H.C. LEU
 R.C. POORE
CARSON

DATE 7-6-17
 WEATHER CLOUDY
 TEMP. 76°

ROUTE SR 163
 COUNTY OTTAWA
 TOWNSHIP SALEM
 SECTION 4

DWG BY JAMES PID 95757

T 6 N R 15 E

TYPE MONUMENT P.K./WASHER

ON SURFACE - ~~BELOW~~ ON

OFFSET \odot PAVEMENT 0.7' LT : ~~RT~~

- TO - EDGE PAVEMENT

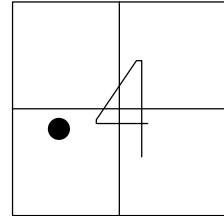
STATION: 765+22

HORZ.DATUM: NAD83 2011

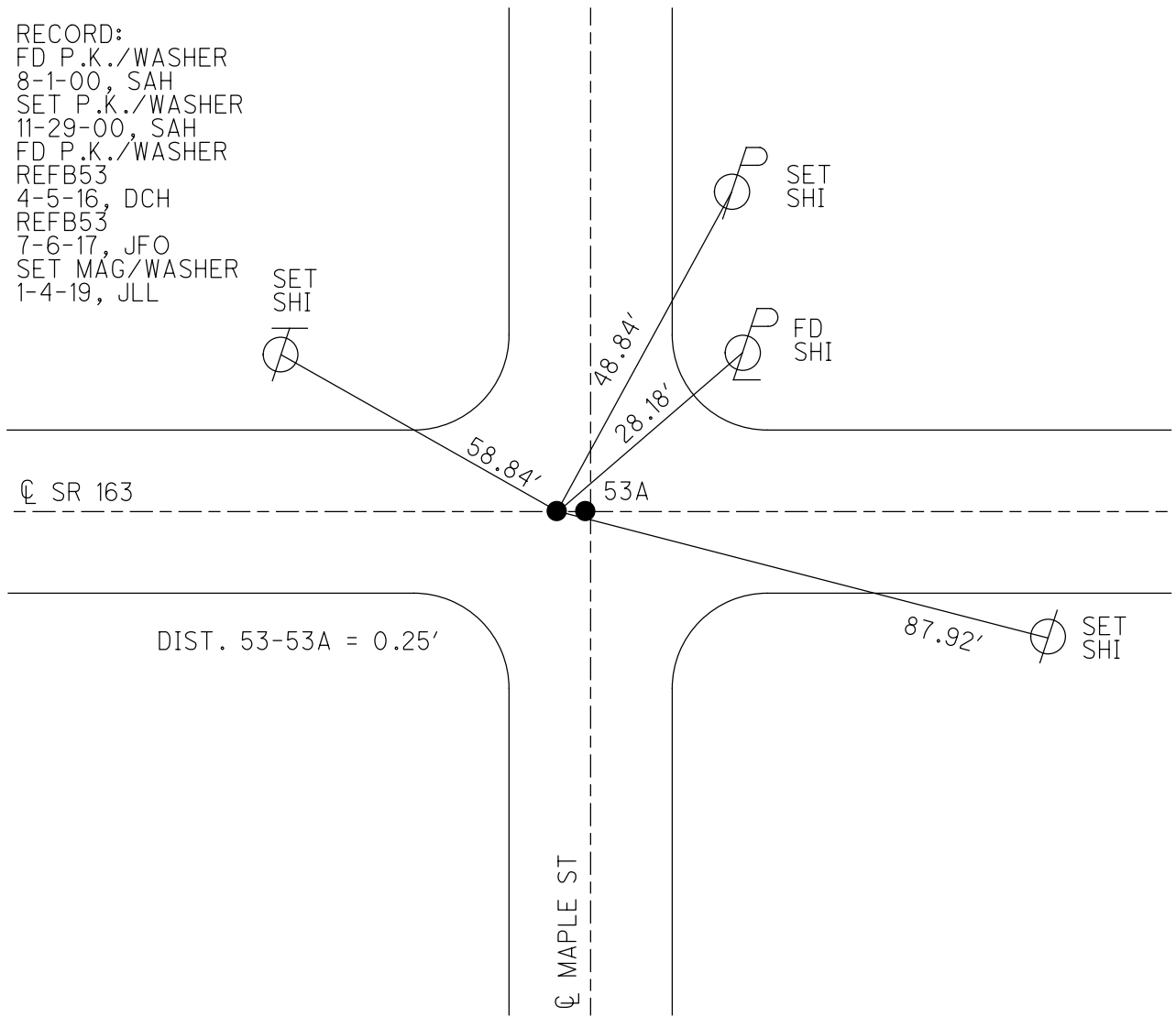
GEOID: NAVD88 2012A

GRID: NORTHING: 671354.391

EASTING: 1793156.820



RECORD:
 FD P.K./WASHER
 8-1-00, SAH
 SET P.K./WASHER
 11-29-00, SAH
 FD P.K./WASHER
 REFB53
 4-5-16, DCH
 REFB53
 7-6-17, JFO
 SET MAG/WASHER
 1-4-19, JLL



O.D.O.T. DISTRICT 2 SURVEY OFFICE

PERSONNEL _____

REFERENCE NO. 53

SHEET 9 OF 63

NOTES Huss

H.C. Condes

R.C. Huss

DATE 8-1-00

WEATHER Clay-Fair

TEMP. +75° F

ROUTE 163

COUNTY OTT.

TOWNSHIP SALGM

SECTION 4

T. 6 N R. 15 E

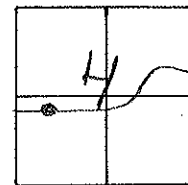
TYPE MONUMENT (A)-(B) PK/w's

ON SURFACE - ~~BELOW~~ Surface

~~LEFT~~ - (E) PAVT - ~~RIGHT~~ E

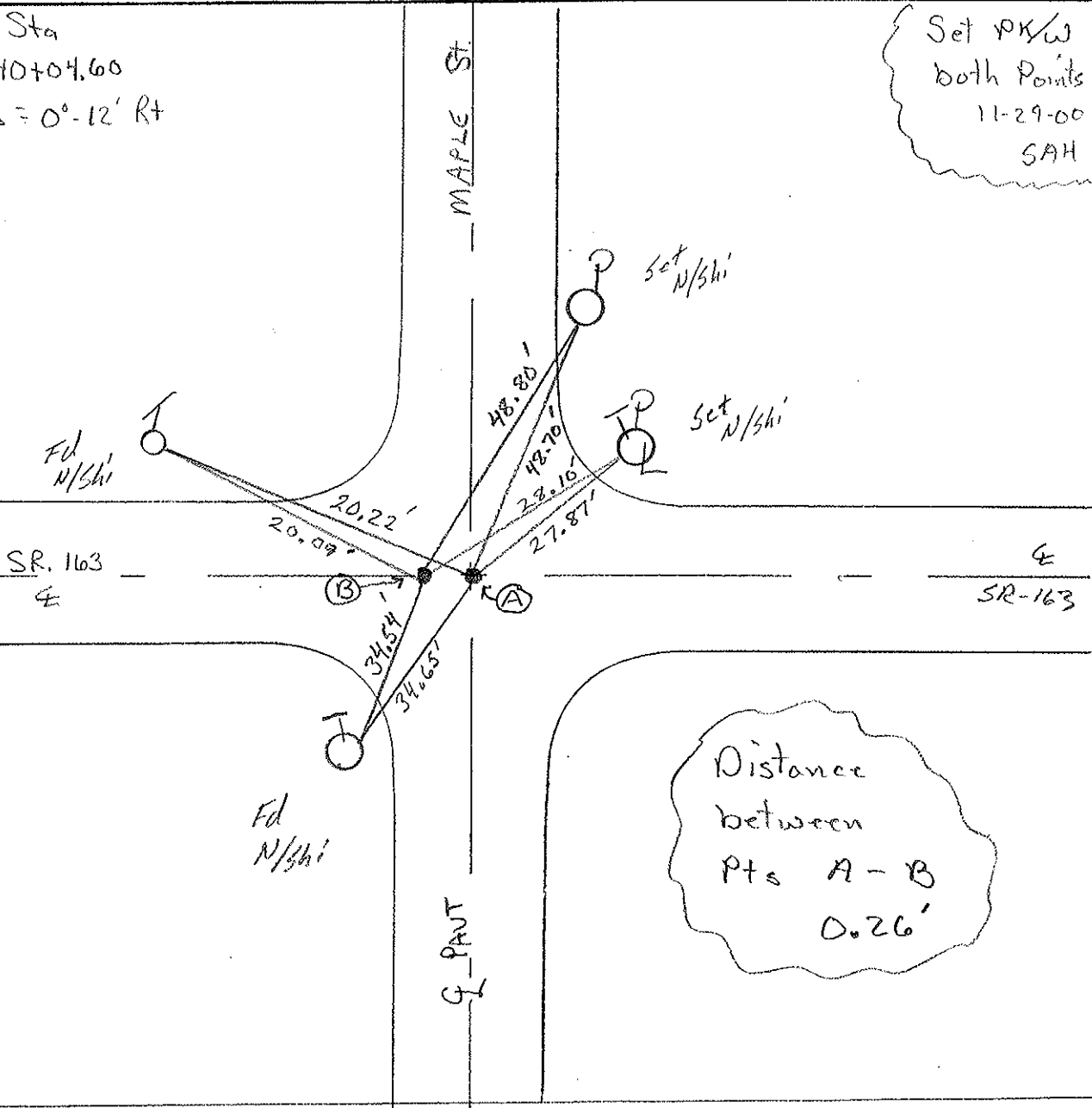
TO EDGE PAVEMENT

S.L.M. 765+22



Record Sta
40+04.60
PI $\Delta = 0^\circ - 12' \text{ Rt}$

Set PK/w
both Points
11-29-00
SAH



Distance
between
Pts A - B
0.26'

O.D.O.T. DISTRICT 2 SURVEY OFFICE

PERSONNEL

REFERENCE NO. 52

SHEET 4 OF

NOTES RIPPLE

H.C. BARBOUR

R.C. GEYMAN

DATE 5/24/90

WEATHER CLOUDY

TEMP. 63°

ROUTE #163

COUNTY OTTAWA

TOWNSHIP SALEM

SECTION 4

T6 N R 15 E

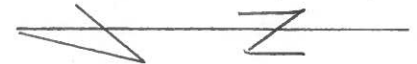
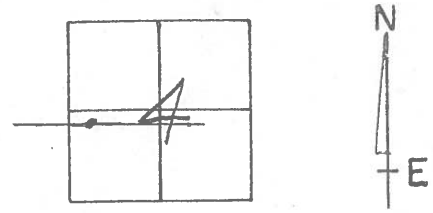
TYPE MONUMENT SET PK. & WASHERS

ON SURFACE - BELOW PK. NAILS

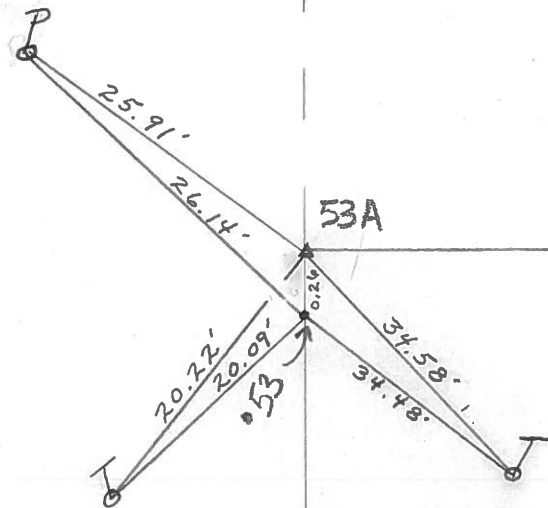
LEFT- & PAV'T. - RIGHT

 TO EDGE PAVEMENT

S.L.M. STA. 40+04.60



Face of cut



SR # 163

MAPLE ST.

PERSONNEL TITLE PERSONNEL TITLE

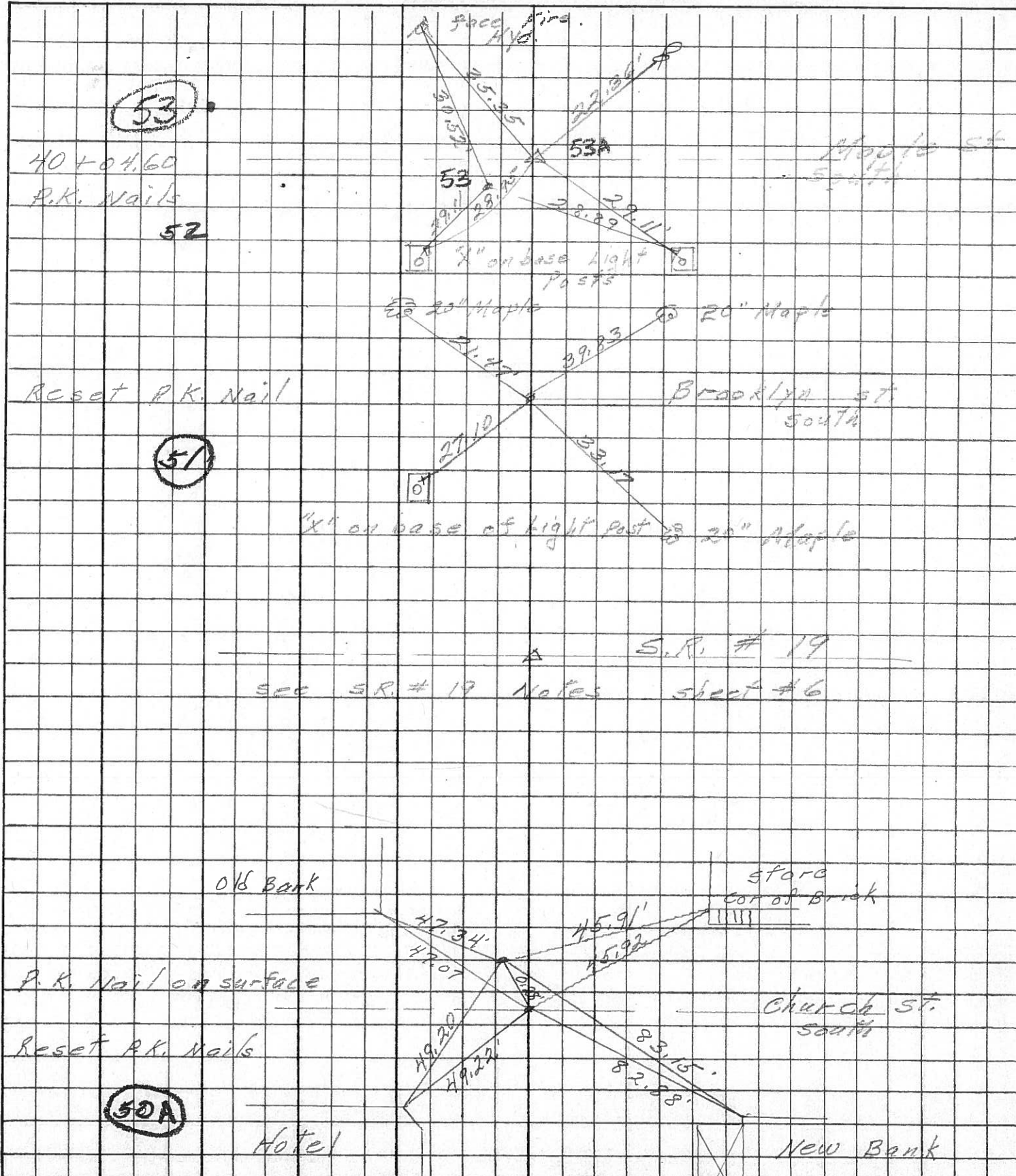
COUNTY Ottawa DATE Aug. 1968

S. R. 163 WEATHER

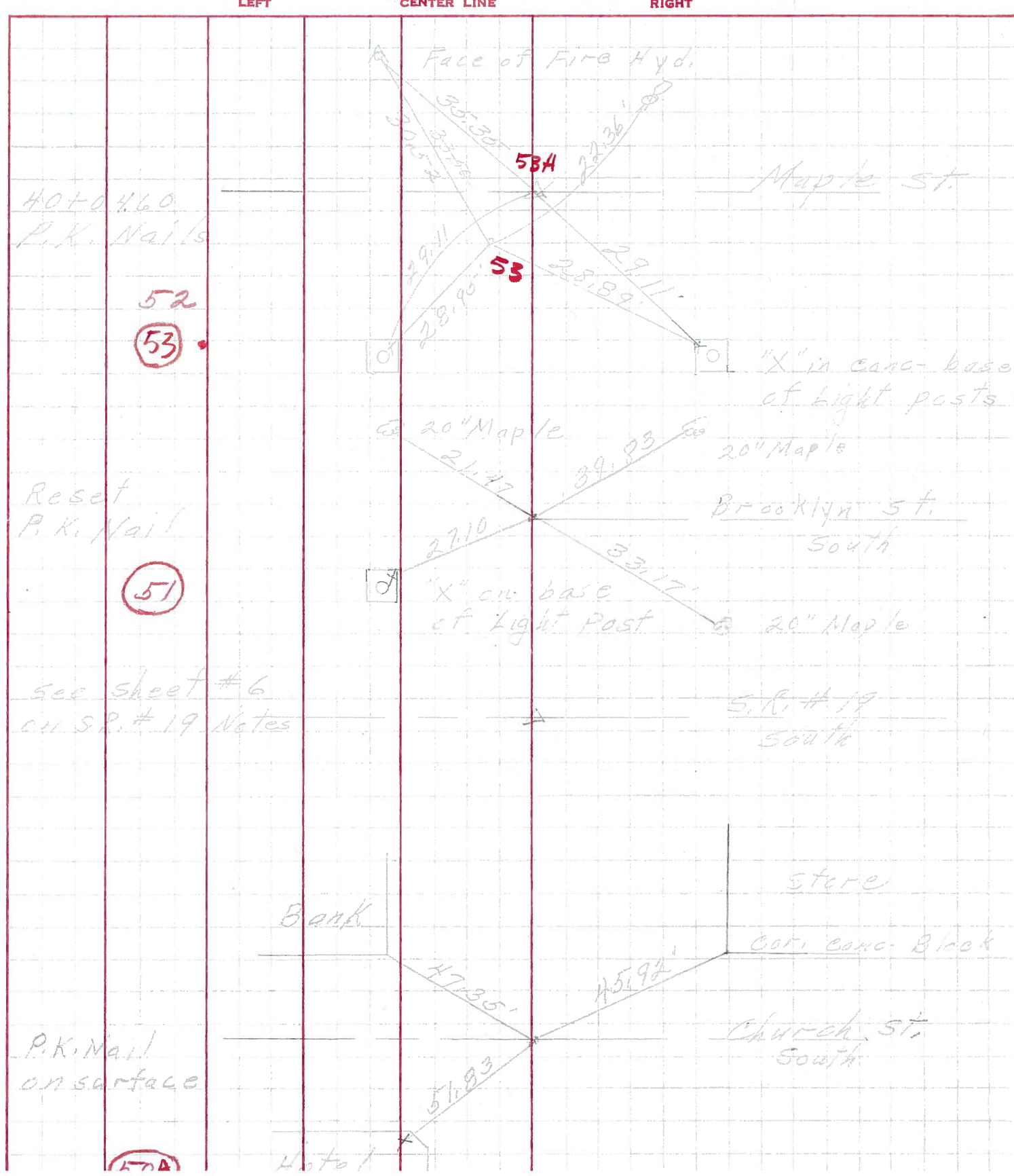
SEC. Oak Harbor TEMP.

DESCRIPTION sec 4 Salem Twp. JOB NO.

LEFT CENTER LINE RIGHT



PERSONNEL _____ TITLE _____ PERSONNEL _____ TITLE _____
 COUNTY Ottawa DATE Aug. 1968
 S. R. 163 WEATHER _____
 SEC. Oak Harbor TEMP. _____
 DESCRIPTION Sec 4 Salem TWP. JOB NO. _____



40+0.460
P.K. Nails

52
53

Reset
P.K. Nail

51

see sheet # 6
on S.R. # 19 Notes

P.K. Nail
on surface

57A

Face of Fire Hyd.

53A

53

Maple St.

"X" in conc. base
of light posts

20" Maple

20" Maple

Reset
P.K. Nail

Brooklyn St.
South

"X" on base
of light post

20" Maple

S.R. # 19
South

Bank

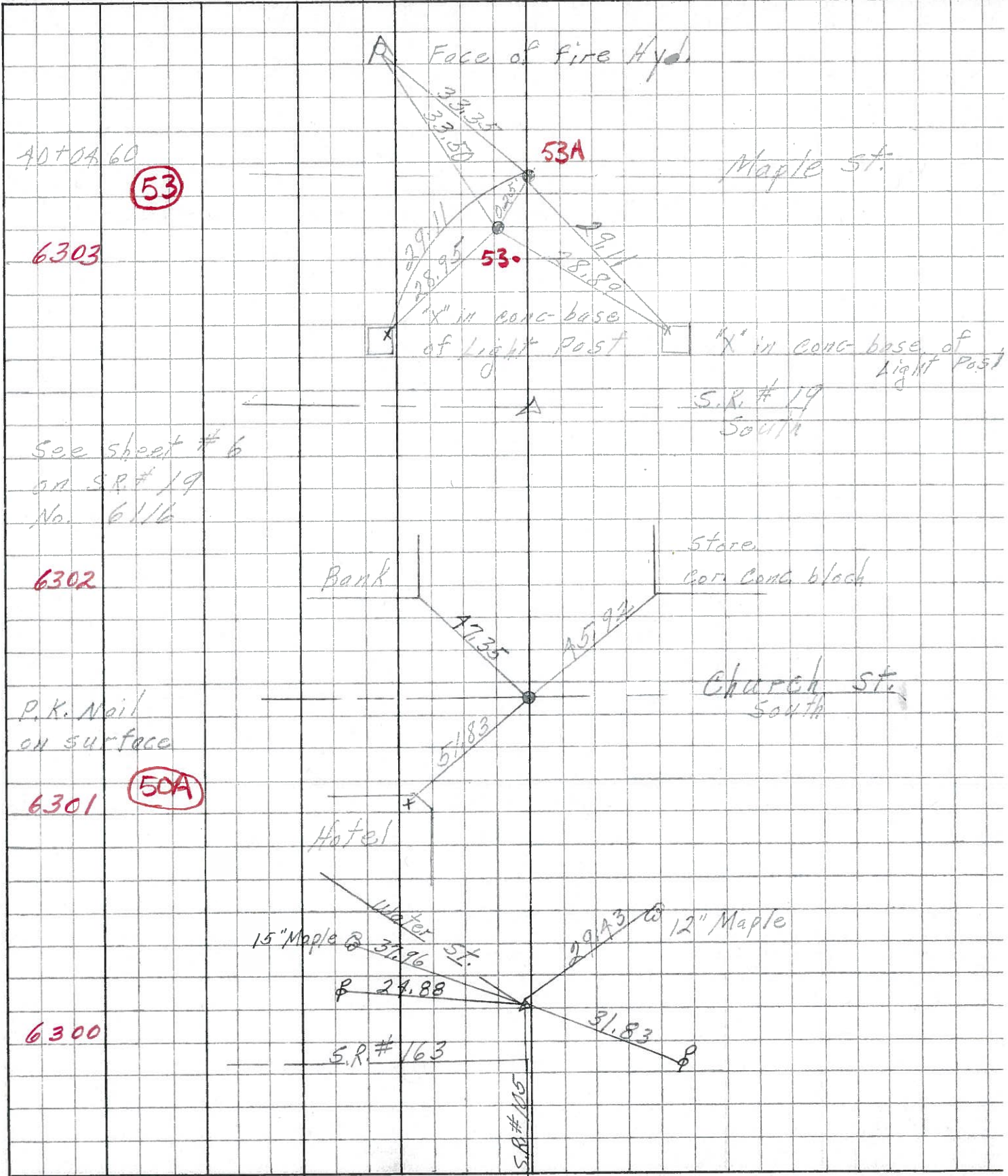
store

Cor. conc. Block

Church St.
South

Hotel

PERSONNEL	TITLE	PERSONNEL	TITLE	COUNTY	DATE
Schneider		Potts		Ottawa	Aug. 68
Mosser				S. R. 163	WEATHER
Barbour				SEC. Oak Harbor	TEMP.
Redding					
DESCRIPTION Ties for Control Points				JOB NO.	
LEFT		CENTER LINE		RIGHT	



40+0A 60
(53)

6303

See sheet # 6
on S.R. # 19
No. 61/6

6302

P.K. Nail
on surface
(50A)

6300

S.R. # 163

PERSONNEL TITLE PERSONNEL TITLE

Krabich

COUNTY Ottawa

DATE Feb 19, 1963

Xowaleski

S. R. # 163

WEATHER

Geyman

SEC. E-2 (pt)

TEMP.

Bruggeman

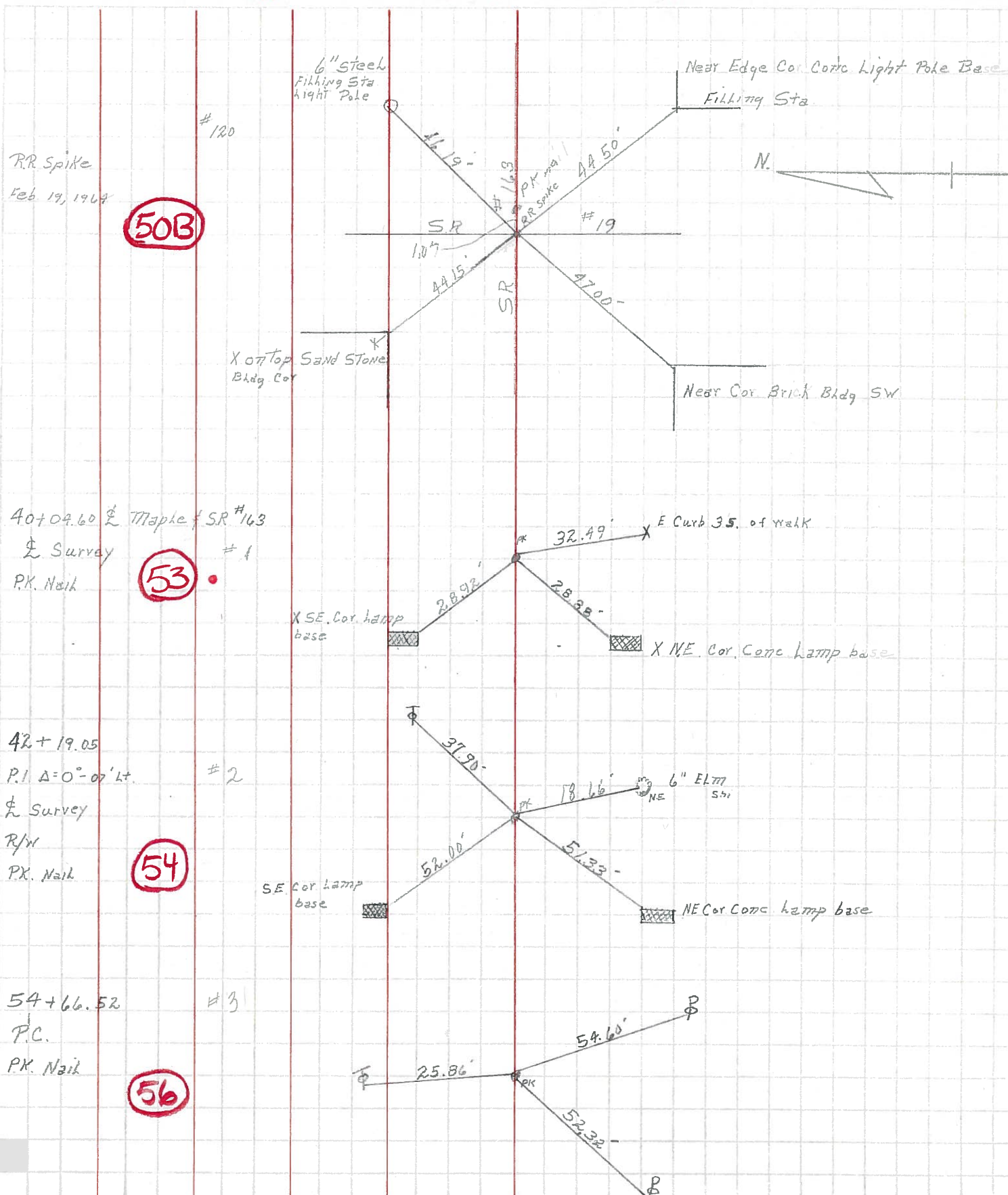
DESCRIPTION Oak Harbor Mon. Locations EAST

JOB NO.

LEFT

CENTER LINE

RIGHT



RR Spike
Feb 19, 1964

50B

#120

40+04.60 $\frac{1}{2}$ Maple $\frac{1}{2}$ SR #163
 $\frac{1}{2}$ Survey
P.K. Nail

53

#1

42+19.05
P.I. A=0°-07' Lt.
 $\frac{1}{2}$ Survey
R/W
P.K. Nail

54

#2

54+66.52
P.C.
P.K. Nail

56

#3

6" Steel
Filling Sta
Light Pole

Near Edge Cor. Conc. Light Pole Base

Filling Sta



X on Top Sand Stone
Bldg. Cor

Near Cor. Brick Bldg SW

X SE. Cor. Lamp
base

X NE. Cor. Conc. Lamp base

SE Cor Lamp
base

6" EL77
Shi

NE Cor Conc. Lamp base