

O.D.O.T. DISTRICT 2 SURVEY OFFICE (USE ONLY)

PERSONNEL

REFERENCE NO. 53 A

SHEET 16 OF 74

NOTES O'DONNELL

DATE 7-6-17

ROUTE SR 163

H.C. LEU

WEATHER CLOUDY

COUNTY OTTAWA

R.C. POORE

TEMP. 76°

TOWNSHIP SALEM

CARSON

DWG BY JAMES

PID 95757

SECTION 4

T 6 N R 15 E

TYPE MONUMENT P.K. SHANK

ON SURFACE - ~~BELOW~~ ON

OFFSET ☉ PAVEMENT 0.6' LT : ~~RT~~

- TO - EDGE PAVEMENT

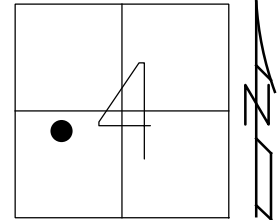
STATION: 765+22±

HORZ.DATUM: NAD83 2011

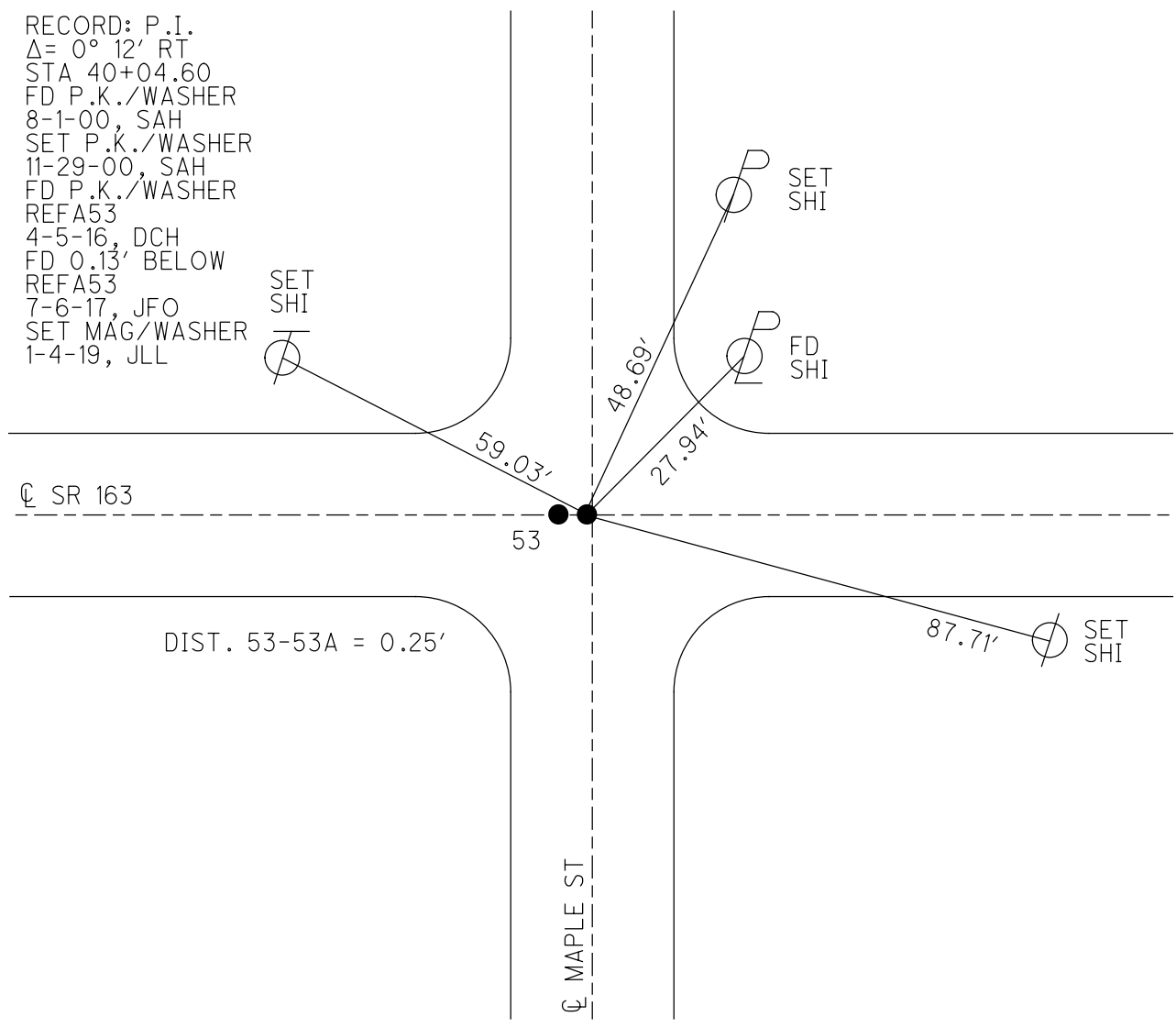
GEOID: NAVD88 2012A

GRID: NORTHING: 671354.436

EASTING: 1793157.075



RECORD: P.I.
 $\Delta = 0^\circ 12' RT$
 STA 40+04.60
 FD P.K./WASHER
 8-1-00, SAH
 SET P.K./WASHER
 11-29-00, SAH
 FD P.K./WASHER
 REFA53
 4-5-16, DCH
 FD 0.13' BELOW
 REFA53
 7-6-17, JFO
 SET MAG/WASHER
 1-4-19, JLL



O.D.O.T. DISTRICT 2 SURVEY OFFICE

PERSONNEL _____

REFERENCE NO. 53

SHEET 9 OF 63

NOTES Huss

H.C. Condes

R.C. Huss

DATE 8-1-00

WEATHER Clay-Fair

TEMP. +75° F

ROUTE 163

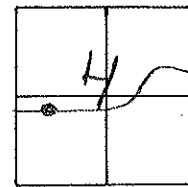
COUNTY OTT.

TOWNSHIP SALGM

SECTION 4

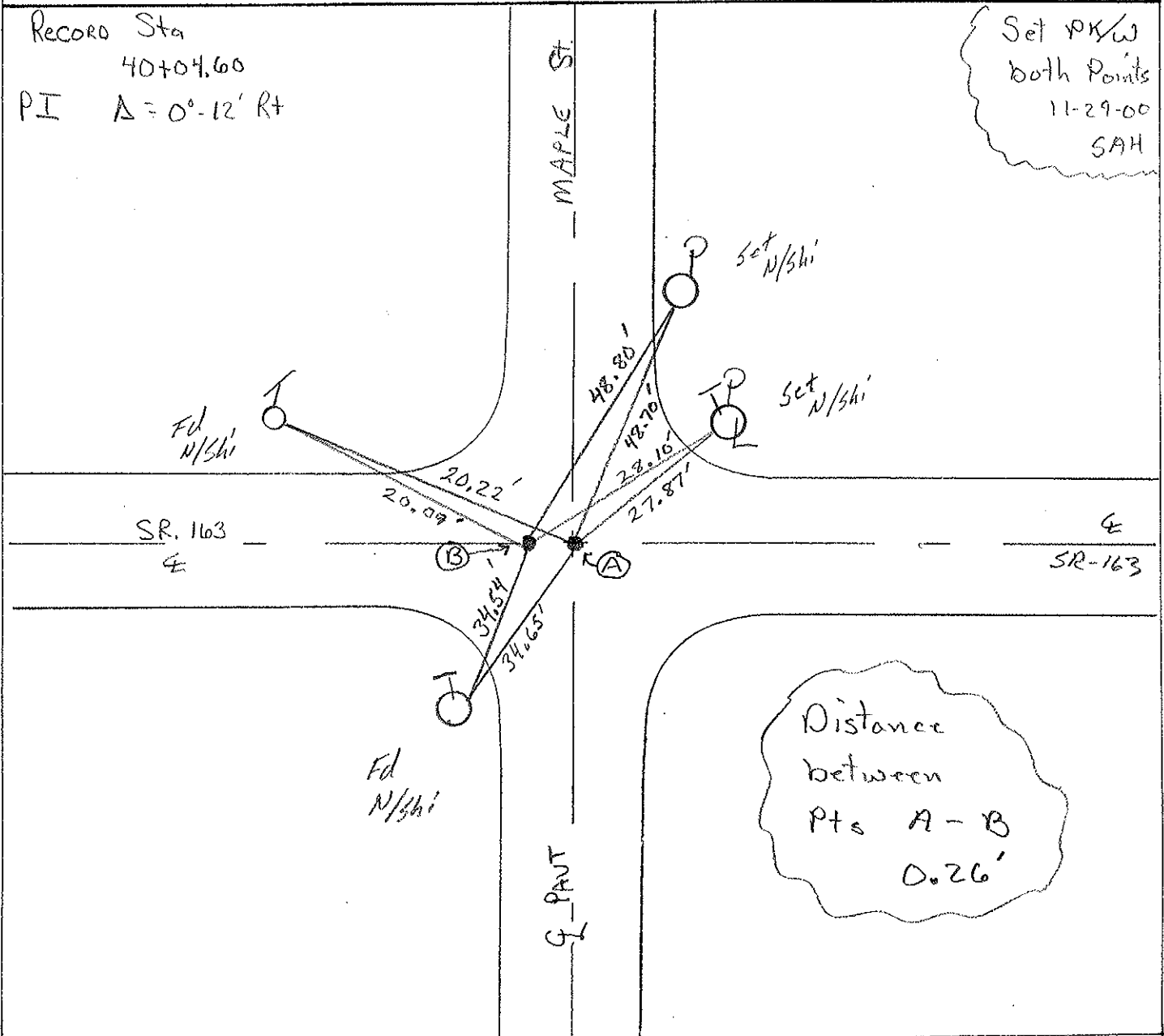
T. 6 N R. 15 E

TYPE MONUMENT (A)-(B) PK/w's
ON SURFACE - ~~BELOW~~ Surface
~~LEFT~~ - (E) PAVT - ~~RIGHT~~ E
TO EDGE PAVEMENT
 S.L.M. 765+22



Record Sta
 40+04.60
 P.I. $\Delta = 0^\circ - 12' \text{ Rt}$

Set PK/w
 both Points
 11-29-00
 SAH



O.D.O.T. DISTRICT 2 SURVEY OFFICE

PERSONNEL

REFERENCE NO. 52 SHEET 4 OF

NOTES RIPPLE

H.C. BARBOUR

R.C. GEYMAN

DATE 5/24/90

WEATHER CLOUDY

TEMP. 63°

ROUTE #163

COUNTY OTTAWA

TOWNSHIP SALEM

SECTION 4

T6 N R 15 E

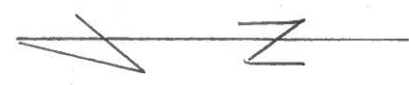
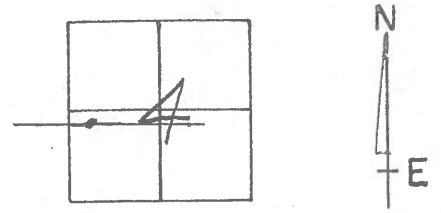
TYPE MONUMENT SET PK. & WASHERS

ON SURFACE - BELOW PK. NAILS

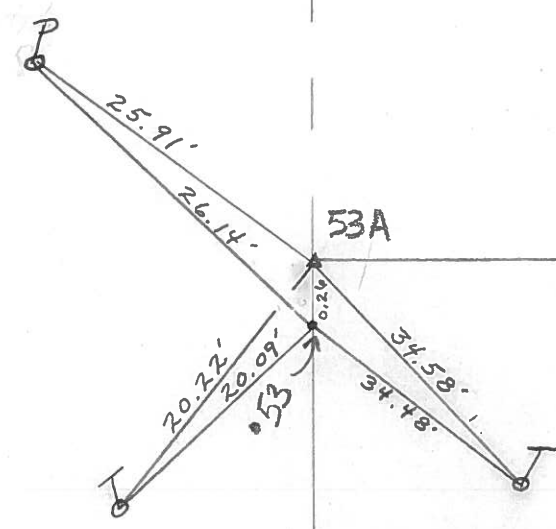
LEFT- & PAV'T. - RIGHT

 TO EDGE PAVEMENT

S.L.M. STA. 40+04.60



Face of cut



SR # 163

MAPLE ST.

PERSONNEL TITLE PERSONNEL TITLE

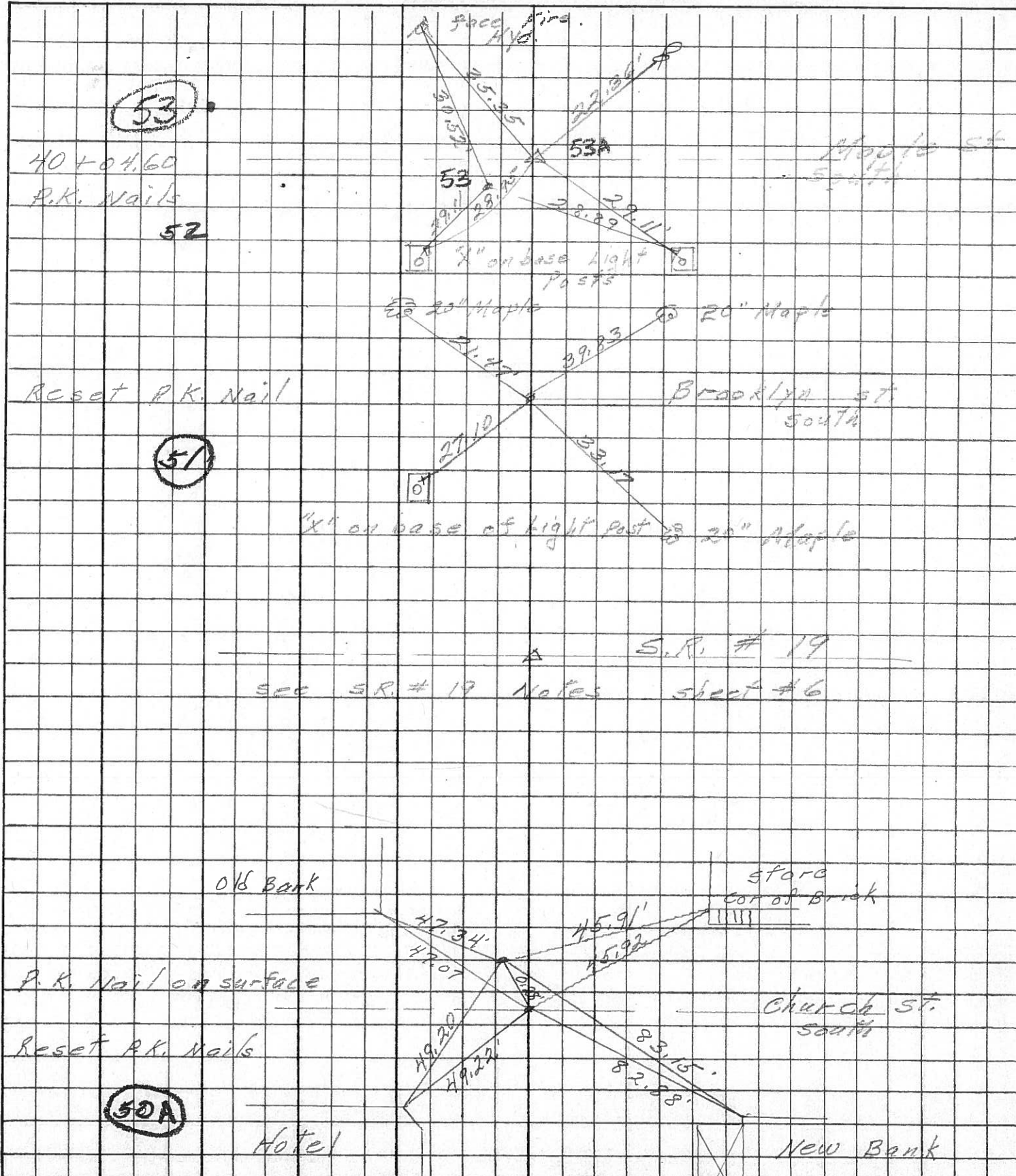
COUNTY Ottawa DATE Aug. 1968

S. R. 163 WEATHER

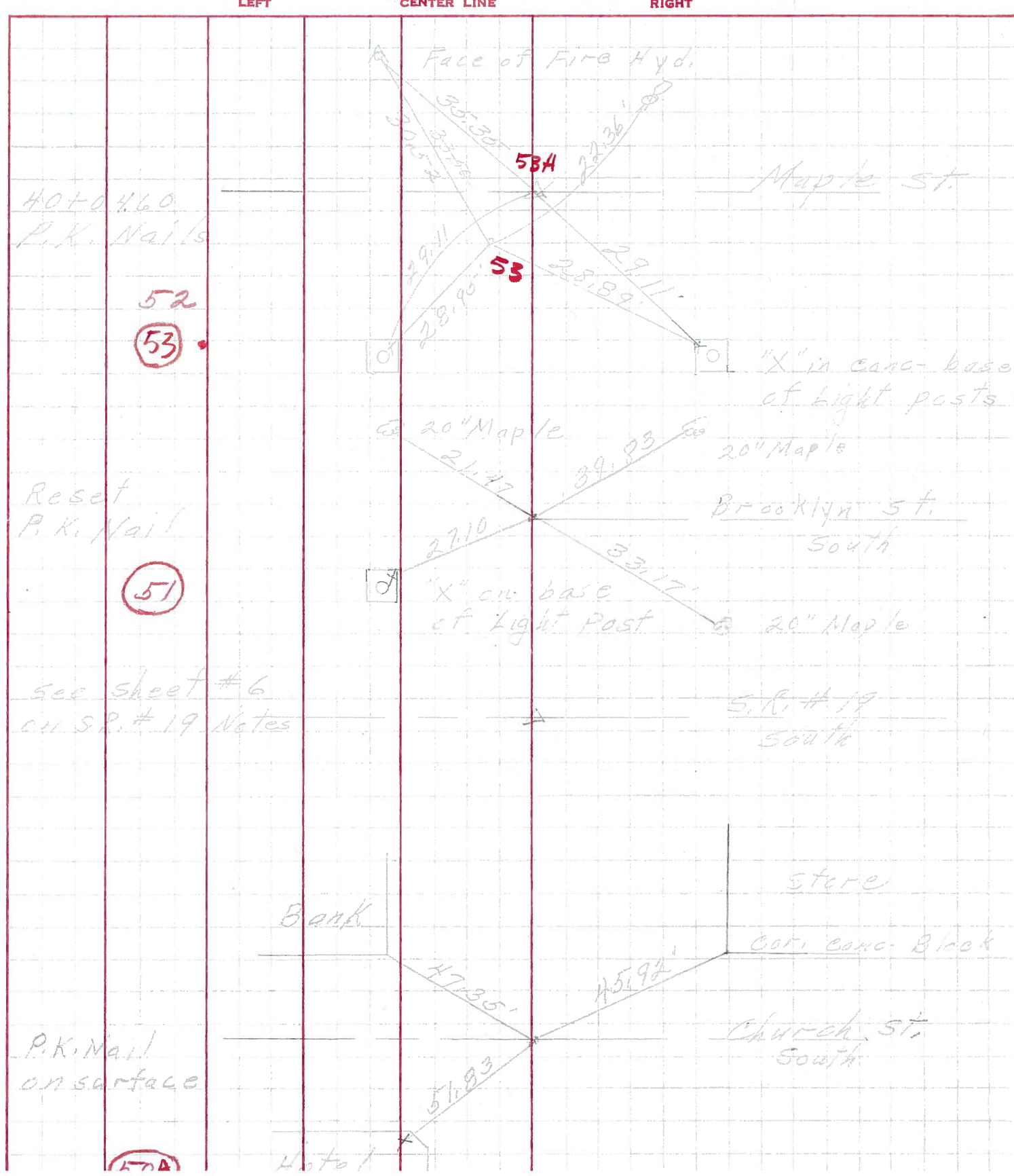
SEC. Oak Harbor TEMP.

DESCRIPTION sec 4 Salem Twp. JOB NO.

LEFT CENTER LINE RIGHT



PERSONNEL _____ TITLE _____ PERSONNEL _____ TITLE _____
 COUNTY Ottawa DATE Aug. 1968
 S. R. 163 WEATHER _____
 SEC. Oak Harbor TEMP. _____
 DESCRIPTION Sec 4 Salem TWP. JOB NO. _____



40+0.460
P.K. Nails

52
53

Reset
P.K. Nail

51

see sheet #6
on S.R. #19 Notes

P.K. Nail
on surface

57A

Face of Fire Hyd.

53A

53

Maple St.

"X" in conc. base
of light posts

20" Maple

20" Maple

Reset
P.K. Nail

Brooklyn St.
South

"X" on base
of light post

20" Maple

S.R. #19
South

Bank

store

concrete block

Church St.
South

Hotel

| PERSONNEL | TITLE | PERSONNEL | TITLE | COUNTY | DATE |
|--|-------|-------------|-------|-----------------|---------|
| Schneider | | Potts | | Ottawa | Aug. 68 |
| Mosser | | | | S. R. 163 | WEATHER |
| Barbour | | | | SEC. Oak Harbor | TEMP. |
| Redding | | | | | |
| DESCRIPTION <u>Ties for Control Points</u> | | | | JOB NO. | |
| LEFT | | CENTER LINE | | RIGHT | |

