

O.D.O.T. DISTRICT 2 SURVEY OFFICE (USE ONLY)

PERSONNEL \_\_\_\_\_ REFERENCE NO. 54 SHEET 17 OF 74  
 NOTES O'DONNELL DATE 7-6-17 ROUTE SR 163  
 H.C. LEU WEATHER CLOUDY COUNTY OTTAWA  
 R.C. POORE TEMP. 80° TOWNSHIP SALEM  
CARSON SECTION 4  
 DWG BY JAMES PID 95757 T 6 N R 15 E

TYPE MONUMENT P.K./WASHER

~~ON SURFACE~~ - BELOW 4"

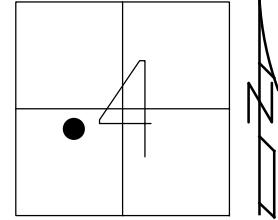
OFFSET C PAVEMENT ON \_\_\_\_\_ LT : RT

- TO - EDGE PAVEMENT

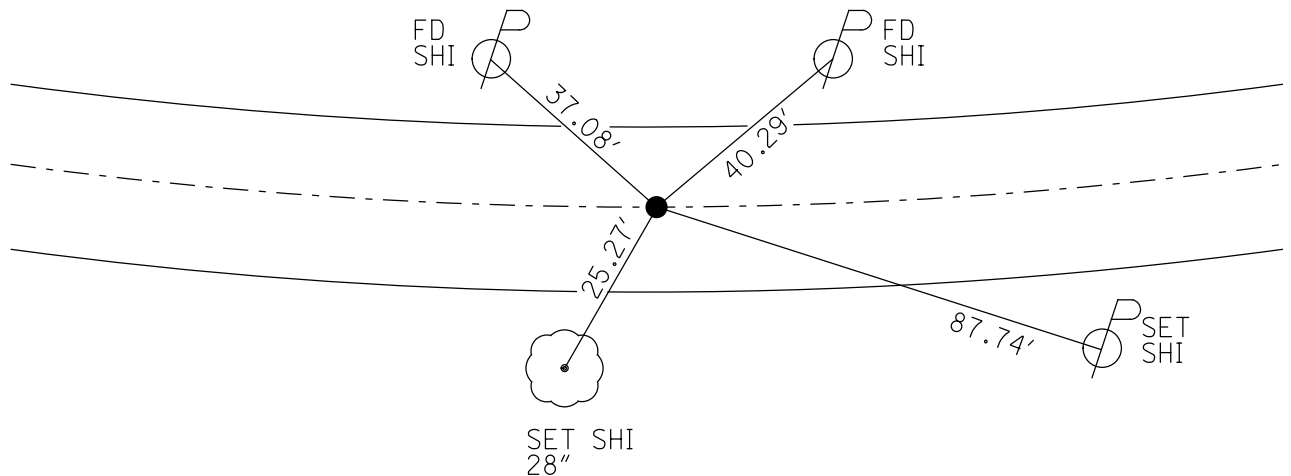
STATION: 767+36

HORZ.DATUM: NAD83 2011 GEOID: NAVD88 2012A

GRID: NORTHING: 671350.077 EASTING: 1793371.424



RECORD: P.I.  
 $\Delta = 0^\circ 7' \text{ LT}$   
 STA 42+19.05  
 FD P.K./WASHER  
 8-1-00, SAH  
 SET P.K./WASHER  
 12-5-00, SAH  
 DNF  
 CALC54  
 4-5-16, DCH  
 FD P.K./WASHER  
 0.29' DOWN  
 REF54  
 7-6-17, JFO  
 SET MAG/WASHER  
 1-4-19, JLL



# O.D.O.T. DISTRICT 2 SURVEY OFFICE

PERSONNEL \_\_\_\_\_

REFERENCE NO. 54

SHEET 10 OF 63

NOTES Huss

H.C. Cordes

R.C. Huss

DATE 8-1-60

WEATHER Cldy - Fair

TEMP. +75°F

ROUTE 163

COUNTY Ottawa

TOWNSHIP Salona

SECTION 4

T 6 N R 15 E

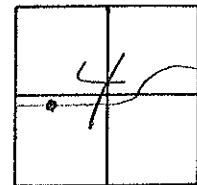
TYPE MONUMENT PK/W

~~ON SURFACE~~ BELOW 4" Deep

~~LEFT - & PAV'T.~~ RIGHT & Pav't.

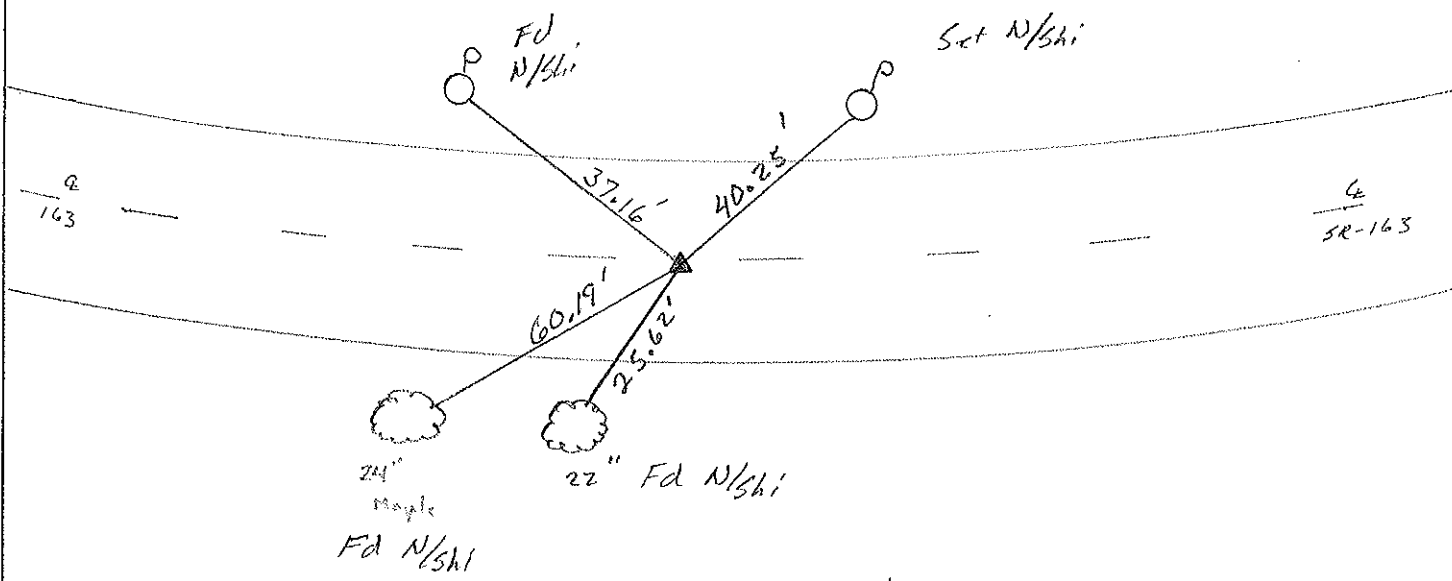
TO EDGE PAVEMENT

S.L.M. 767+36



Record PI. Survey  
 $A = 00^{\circ} 07' - 00''$  Lt.  
 Sta 42+19.05

SET PK& WASHER  
 12-5-00  
 SAM



O.D.O.T. DISTRICT 2 SURVEY OFFICE

PERSONNEL

REFERENCE NO. 54

SHEET 5 OF     

NOTES Cronin

DRAWN 7/05/88

H.C. Ripplu

DATE 5-24-90

R.C. BARbour

WEATHER Cloudy

Geyman

TEMP. 63°

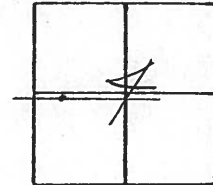
ROUTE #163

COUNTY Ottawa

TOWNSHIP Salem

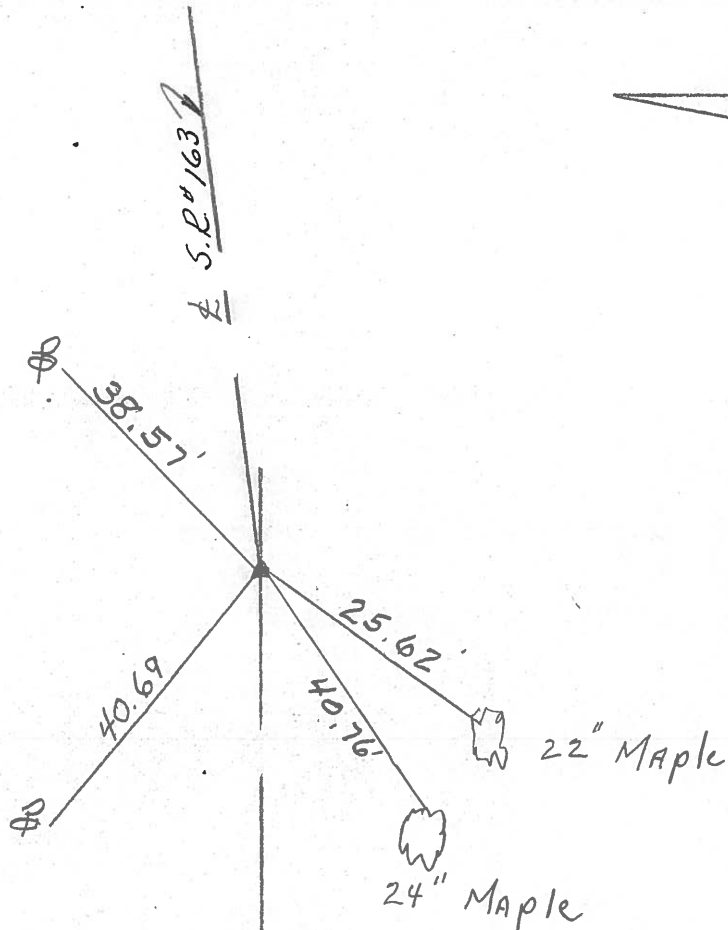
SECTION 4

T 6 N R 15 E  
VILLAGE OF OAK HARBOR



TYPE MONUMENT set PK+Washer  
ON SURFACE - BELOW PK+Washer 4" down  
LEFT - PAV'T. - RIGHT       
     TO      EDGE PAVEMENT  
S.L.M. Sta. 42+19.05

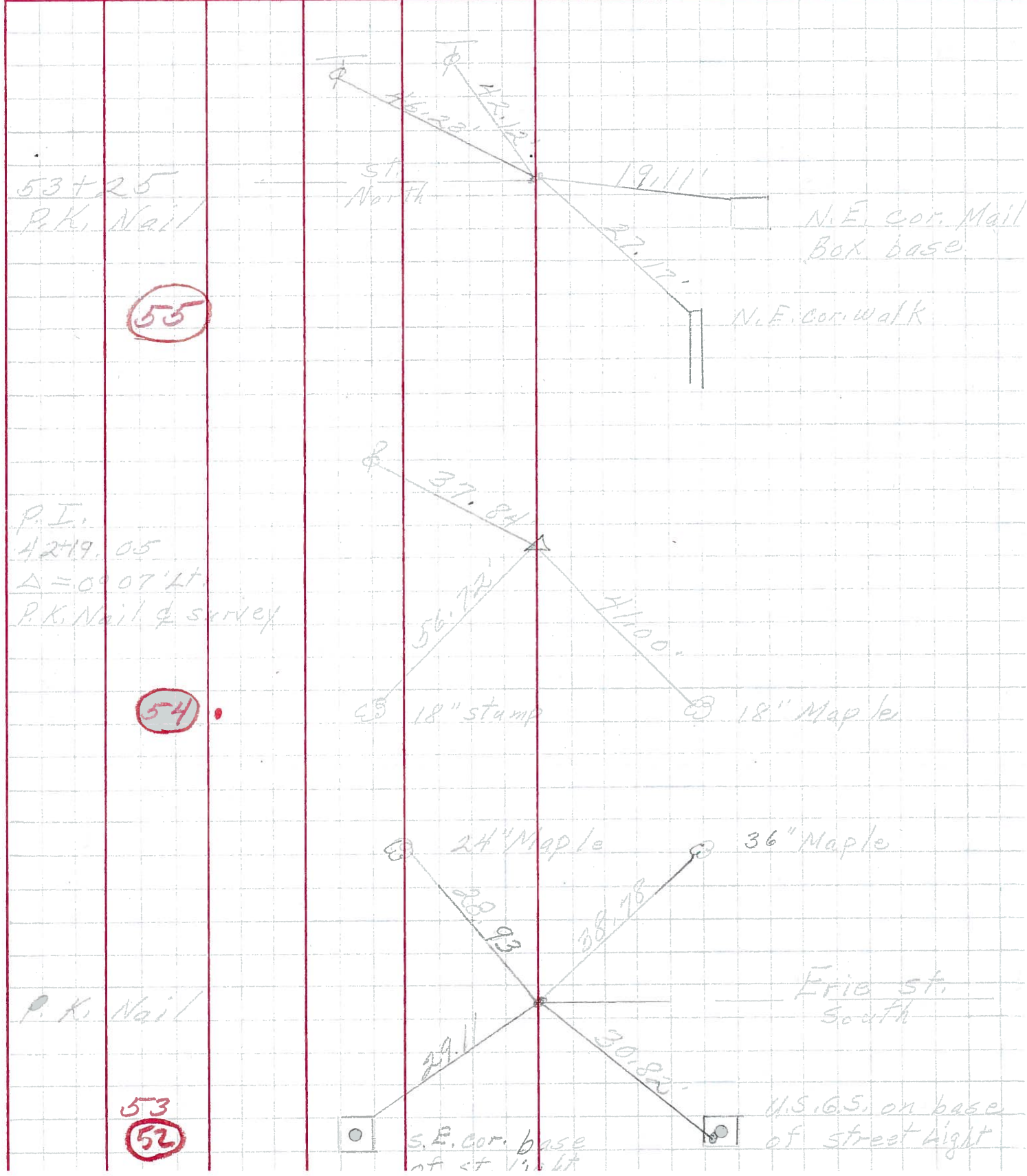
P.I.  
Δ = 00° 07' 00" Lt.



PERSONNEL	TITLE	PERSONNEL	TITLE

COUNTY Ottawa DATE 3-11-70  
 S. R. 163 WEATHER Fair  
 SEC. Oak Harbor TEMP. 35°

DESCRIPTION Sec 4 Salem Twp. JOB NO. \_\_\_\_\_

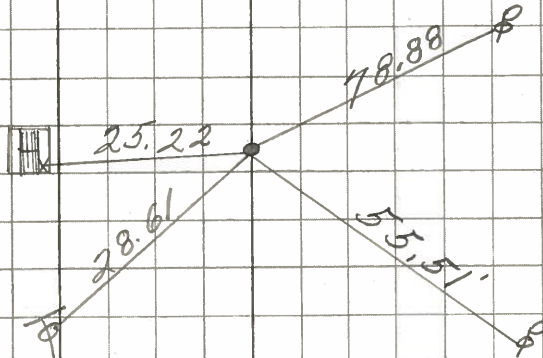


PERSONNEL	TITLE	PERSONNEL	TITLE	COUNTY	DATE
Schneider		Potts		0 a	Aug.
Mosser				S. R. 163	WEATHER
Barbour				SEC. Oak Har East	TEMP.
Redding					
DESCRIPTION	Ties for control points				JOB NO.
	LEFT	CENTER LINE	RIGHT		

P.T.  
56+90.81  
small spk.

58

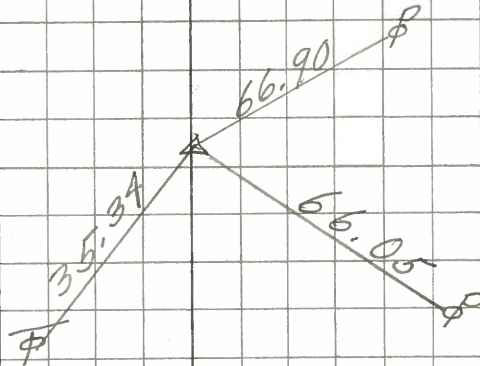
6307



P.I.  
55+78.78  
 $\Delta = 4^{\circ} 29' Lt.$   
P.K. Nail

57

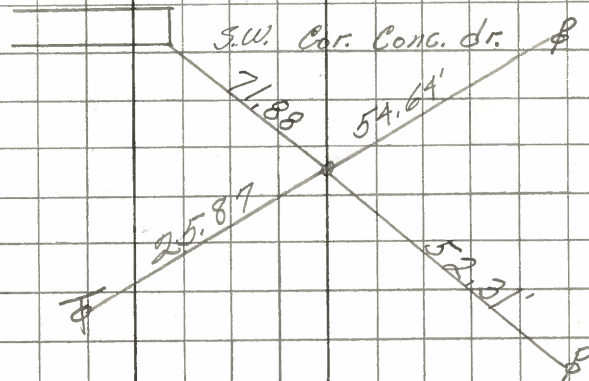
6306



P.C.  
54+66.52  
P.K. Nail

56

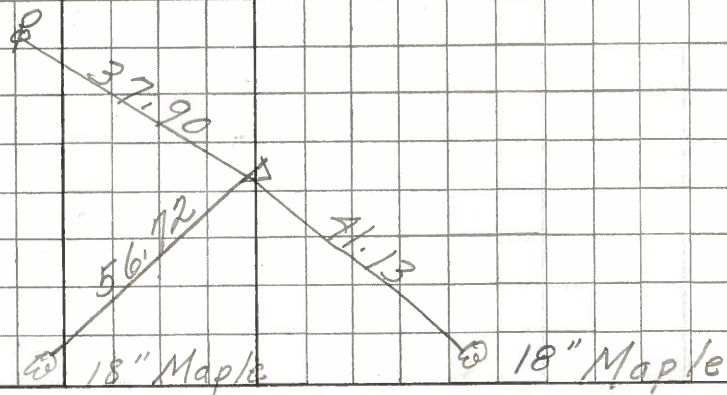
6305



P.I.  
42+19.05  
 $\Delta = 0^{\circ} 07' Lt.$   
P.K. Nail & Survey

54

6304



PERSONNEL TITLE PERSONNEL TITLE

Krabich  
Kowaleski  
Geyman  
Bruggeman

COUNTY Ottawa

DATE Feb. 19, 1963

S. R. # 163

WEATHER

SEC. E-2 (pt)

TEMP.

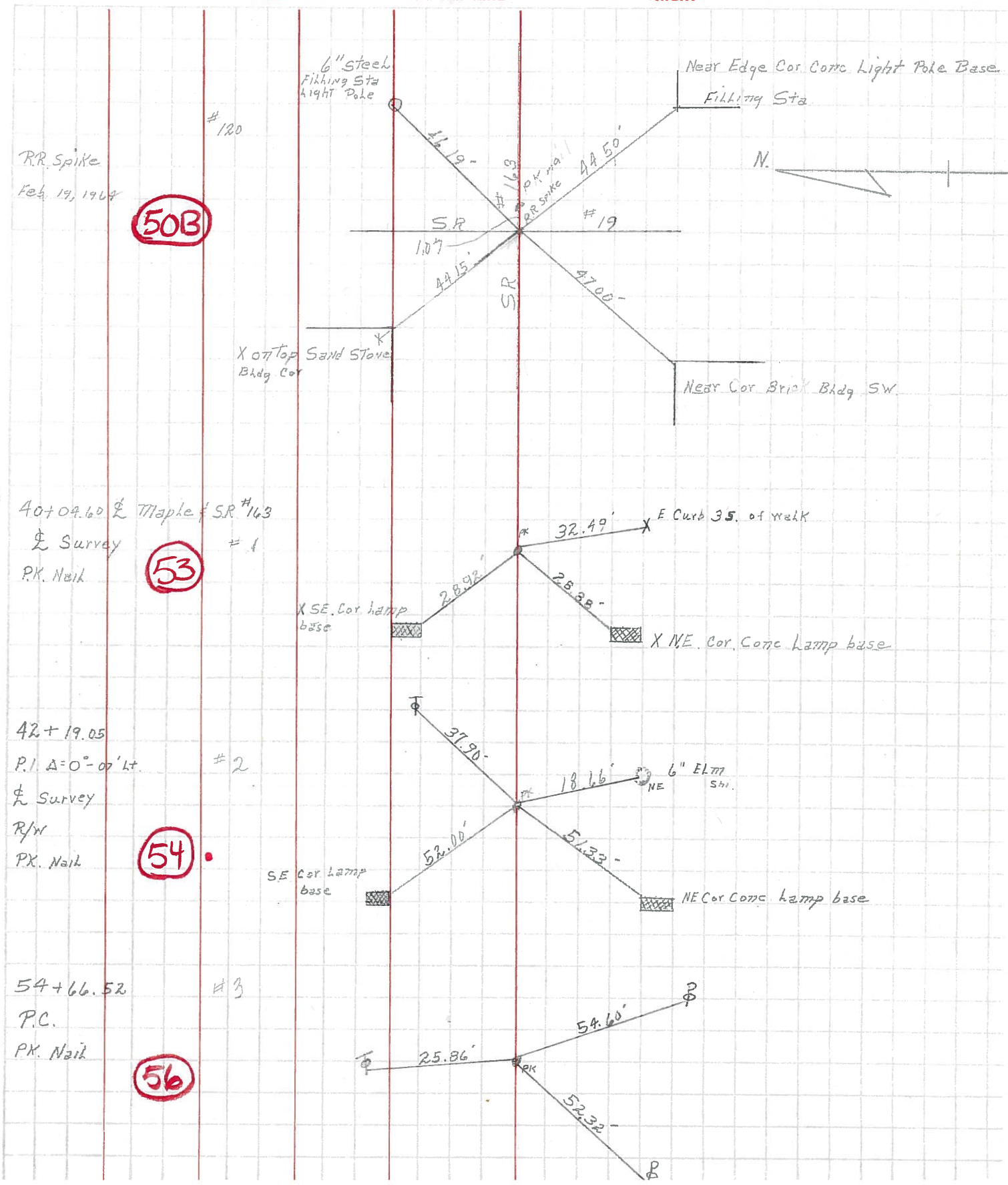
DESCRIPTION Oak Harbor Mon. Locations East

JOB NO.

LEFT

CENTER LINE

RIGHT



R.R. Spike  
Feb. 19, 1964

50B

40+04.60  $\frac{1}{2}$  Maple  $\frac{1}{2}$  SR #163  
 $\frac{1}{2}$  Survey  
P.K. Nail

53

42+19.05  
P.I. A=0°-07' Lt.  
 $\frac{1}{2}$  Survey  
R/W  
P.K. Nail

54

54+66.52  
P.C.  
P.K. Nail

56