

O.D.O.T. DISTRICT 2 SURVEY OFFICE (USE ONLY)

PERSONNEL

REFERENCE NO. 55

SHEET 18 OF 74

NOTES CORDES

DATE 8-2-00

ROUTE SR 163

H.C. ROUSOS

WEATHER SUNNY

COUNTY OTTAWA

R.C. KARGER

TEMP. 78°

TOWNSHIP SALEM

SECTION 4

DWG BY JAMES

PID 95757

T 6 N R 15 E

TYPE MONUMENT P.K./WASHER

ON SURFACE - ~~BELOW~~ ON

OFFSET Q PAVEMENT ON LT : RT

- TO - EDGE PAVEMENT

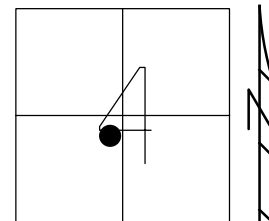
STATION: 778+96

HORZ.DATUM: _____

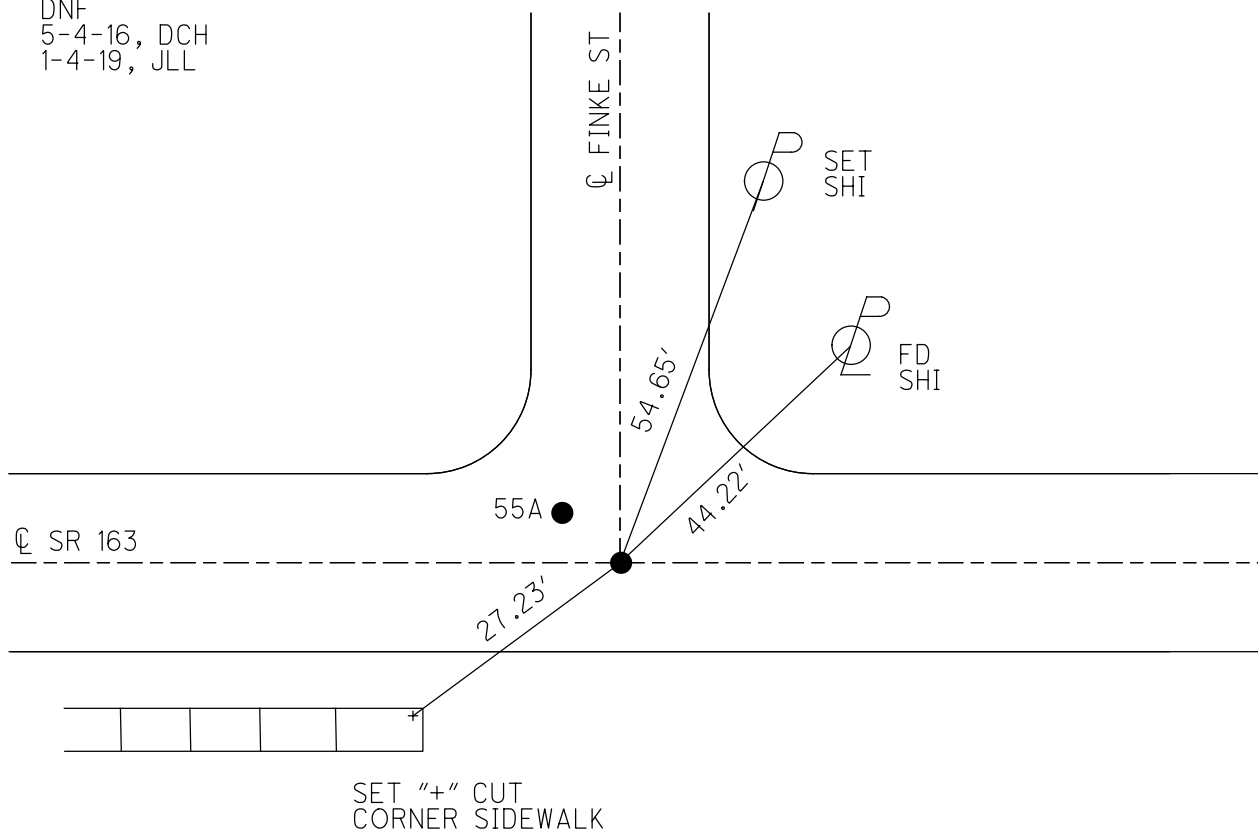
GEOID: _____

GRID: NORTHING: _____

EASTING: _____



RECORD:
 FD P.K./WASHER
 8-2-00, TMR
 SET P.K./WASHER
 12-5-00, SAH
 DNF
 5-4-16, DCH
 1-4-19, JLL



O.D.O.T. DISTRICT 2 SURVEY OFFICE

PERSONNEL

REFERENCE NO. 55

SHEET 11 OF 63

NOTES Londos

H.C. Rousos

R.C. Karger

DATE 8-2-00

WEATHER Sunny

TEMP. 78°F

ROUTE 163

COUNTY OTT

TOWNSHIP SALEM

SECTION 4

T 6 N R 15 E

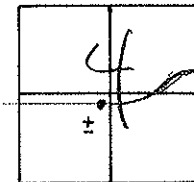
TYPE MONUMENT PK/W

ON SURFACE - ~~BELOW~~ Surface

~~LEFT PAVT.~~ - (RIGHT) (A) E (B) - 2' RT

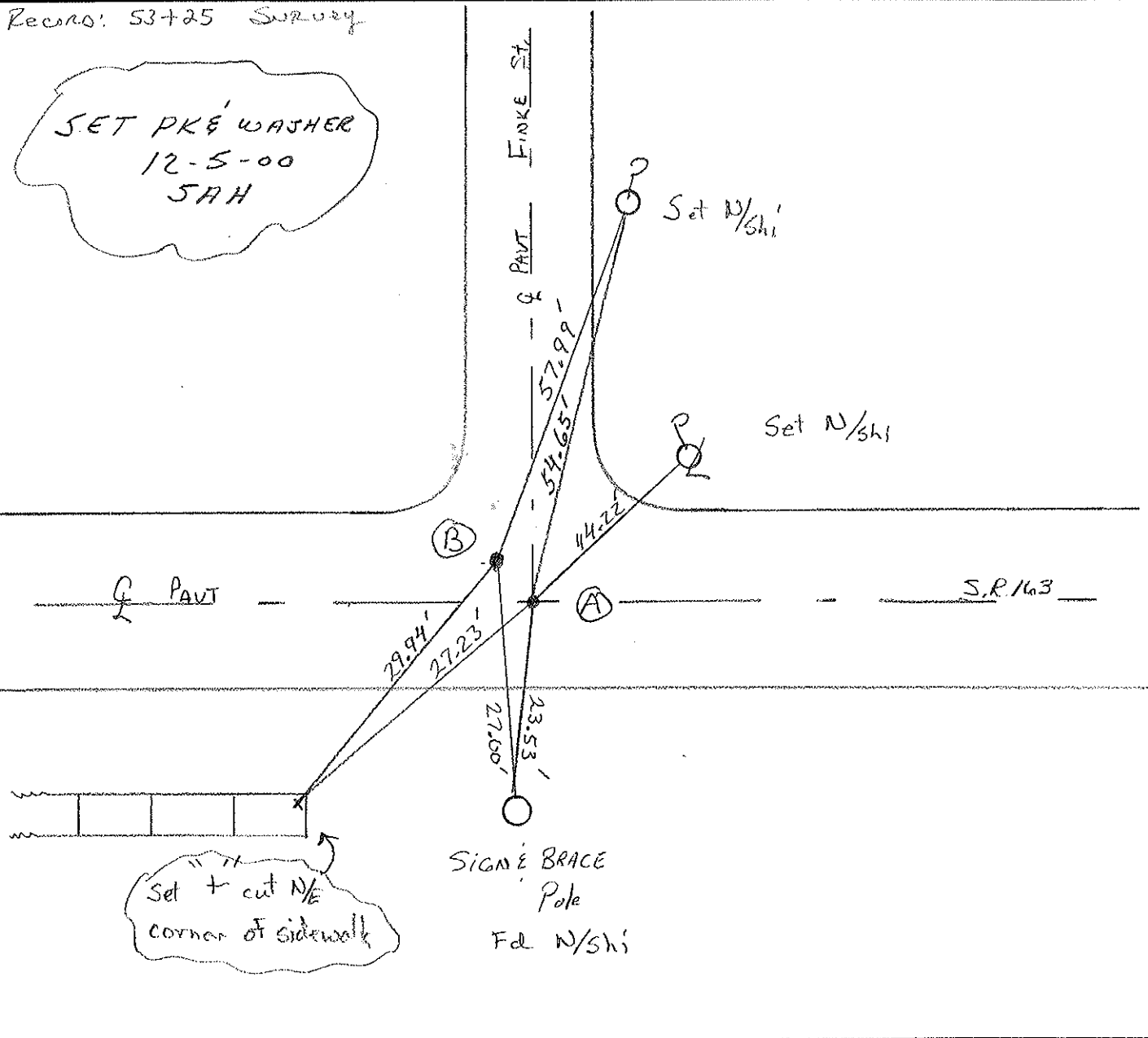
TO EDGE PAVEMENT

S.L.M. 778+96



Recons: 53+25 Survey

SET PK & WASHER
 12-5-00
 SAH



O.D.O.T. DISTRICT 2 SURVEY OFFICE

PERSONNEL

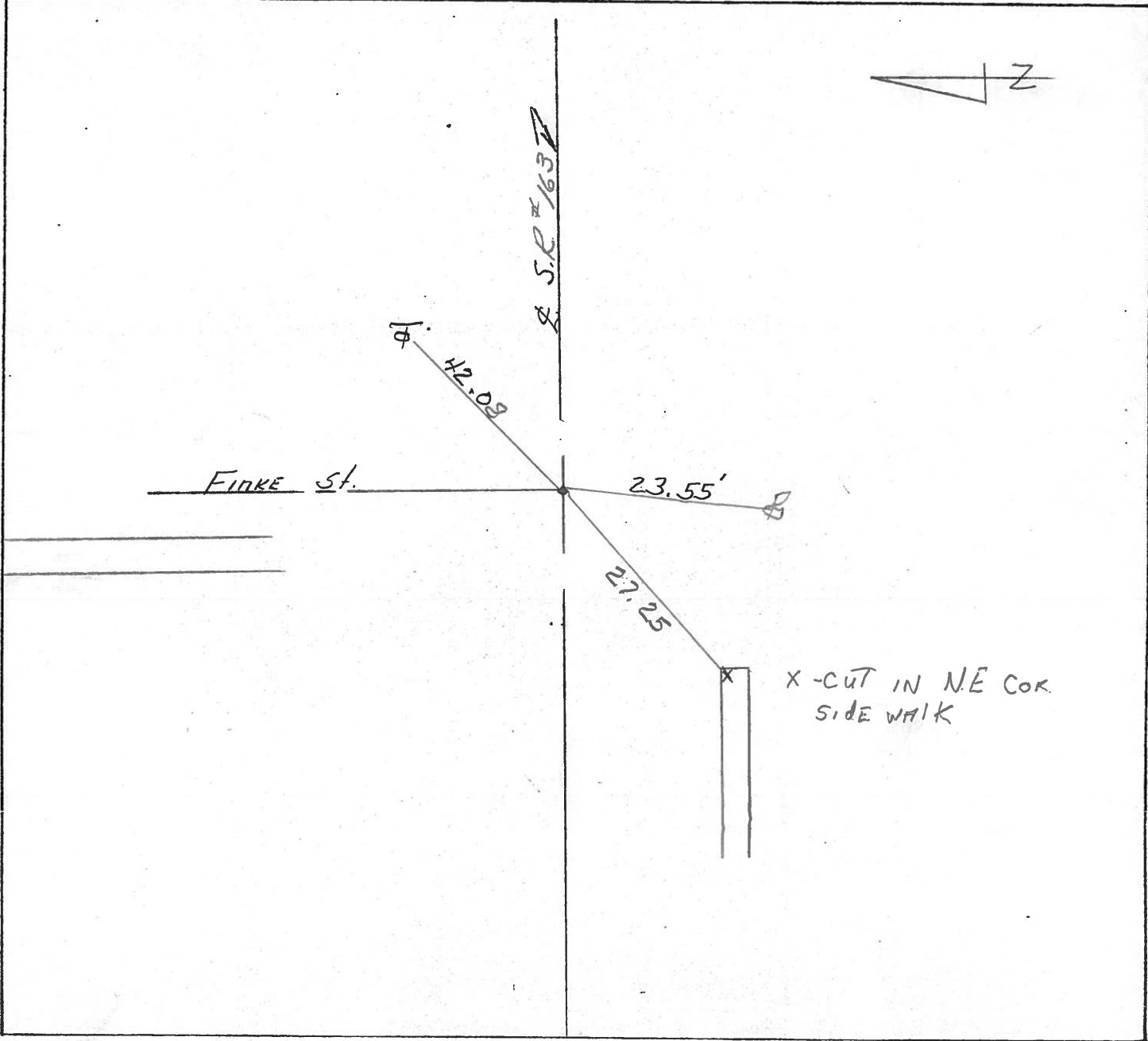
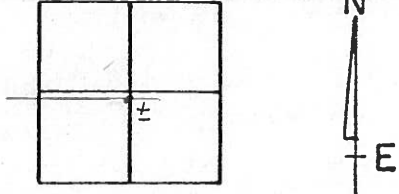
NOTES Cronin
H.C. Ripple
R.C. Baebour
Geyman

REFERENCE NO. 55
DRAWN 7/05/88
DATE 5-24-90
WEATHER Cloudy
TEMP. 64°

SHEET 6 OF _____
ROUTE #163
COUNTY Ottawa
TOWNSHIP Salem
SECTION 4

TYPE MONUMENT Set PK + Washer
ON SURFACE - BELOW _____
LEFT - ¢ PAV'T. - RIGHT 2' RT. & Pvm't
_____ TO _____ EDGE PAVEMENT
S.L.M. Sta. 53+25

T 6 N R 15 E
VILLAGE OF OAK HARBOR



PERSONNEL _____ TITLE _____
 _____ TITLE _____
 _____ TITLE _____

COUNTY Ottawa DATE 3-11-70
 S. R. 163 WEATHER Fair
 SEC. Oak Harbor TEMP. 35°

DESCRIPTION sec 4 Salem Twp. JOB NO. _____

