

O.D.O.T. DISTRICT 2 SURVEY OFFICE (USE ONLY)

PERSONNEL

REFERENCE NO. 56

SHEET 20 OF 74

NOTES HOMAN

DATE 7-7-17

ROUTE SR 163

H.C. LEU

WEATHER CLOUDY

COUNTY OTTAWA

R.C. CARSON

TEMP. 75°

TOWNSHIP SALEM

POORE

SECTION 4

DWG BY JAMES

PID 95757

T 6 N R 15 E

TYPE MONUMENT P.K./WASHER

~~ON SURFACE~~ - BELOW 2"

OFFSET C PAVEMENT 1.0' E : RT

14.2' TO RT EDGE PAVEMENT

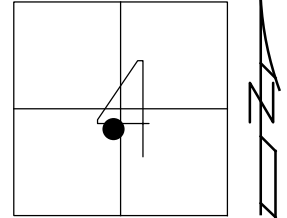
STATION: 780+38

HORZ.DATUM: NAD83 2011

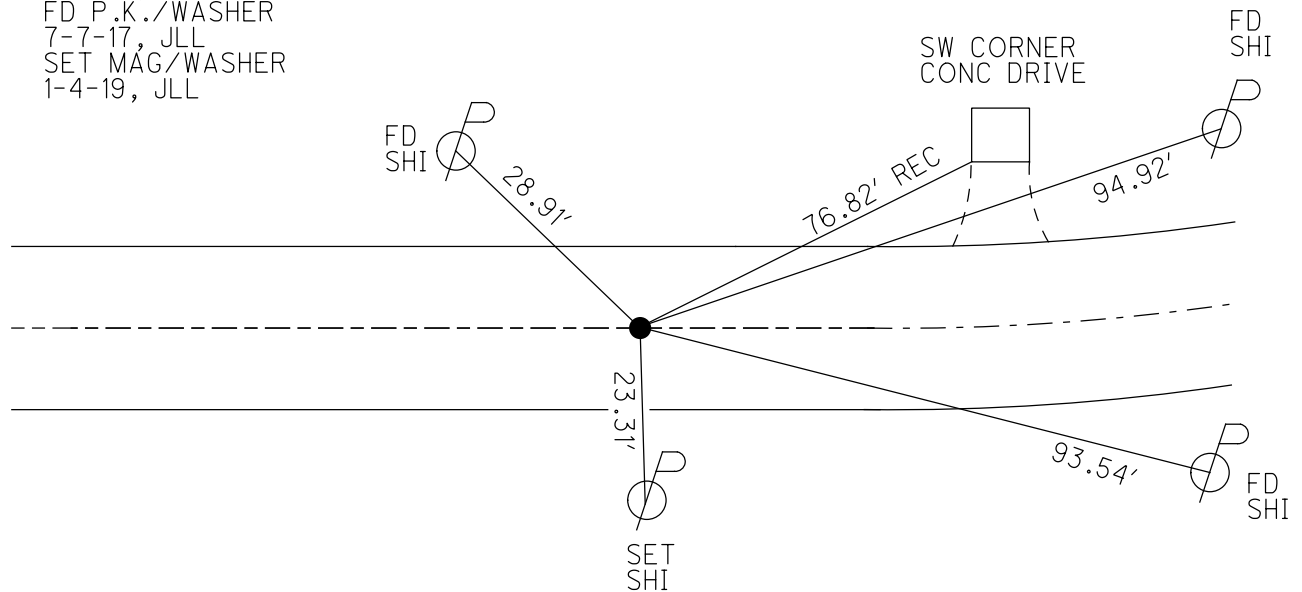
GEOID: NAVD88 2012A

GRID: NORTHING: 671324.636

EASTING: 1794618.448



- RECORD:
 FD P.K./WASHER
 8-2-00, TMR
 SET P.K./WASHER
 11-29-00, SAH
 FD P.K. SHANK
 REF56
 4-5-16, DCH
 FD P.K./WASHER
 7-7-17, JLL
 SET MAG/WASHER
 1-4-19, JLL



O.D.O.T. DISTRICT 2 SURVEY OFFICE

PERSONNEL

REFERENCE NO. 56

SHEET 12 OF 63

NOTES Cordes

H.C. Roussos

R.C. Kangar

DATE 8-2-00

WEATHER Sunny

TEMP. 79°F

ROUTE S.R. 163

COUNTY OTTAWA

TOWNSHIP SALEM

SECTION 4

T 6 N R 15 E

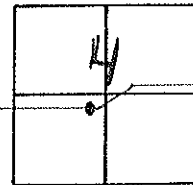
TYPE MONUMENT PK/w

ON SURFACE - ~~BRICK~~ Surf

~~LEFT~~ PAV'T. - RIGHT 2.1 Rt.

14.2' TO Rt. EDGE PAVEMENT

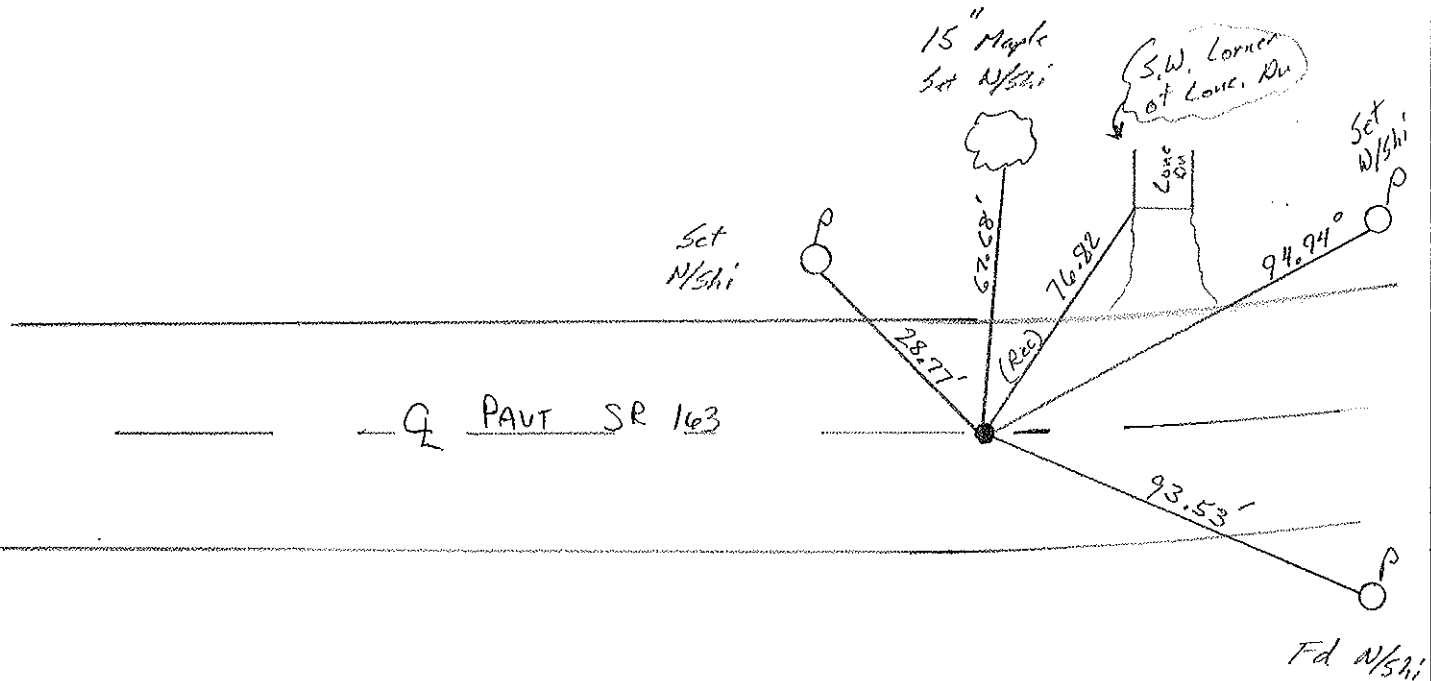
S.L.M. 780+38



Record P.C. E Survey

Sta 54+66.52

Set PK/w
11-29-00
SHH



O.D.O.T. DISTRICT 2 SURVEY OFFICE

PERSONNEL

REFERENCE NO. 56

SHEET 7 OF

NOTES Cronin

DRAWN 7/05/88

H.C. Ripple

DATE 5-24-90

R.C. BARBOUR

WEATHER Cloudy

Geyman

TEMP. 68°

ROUTE #163

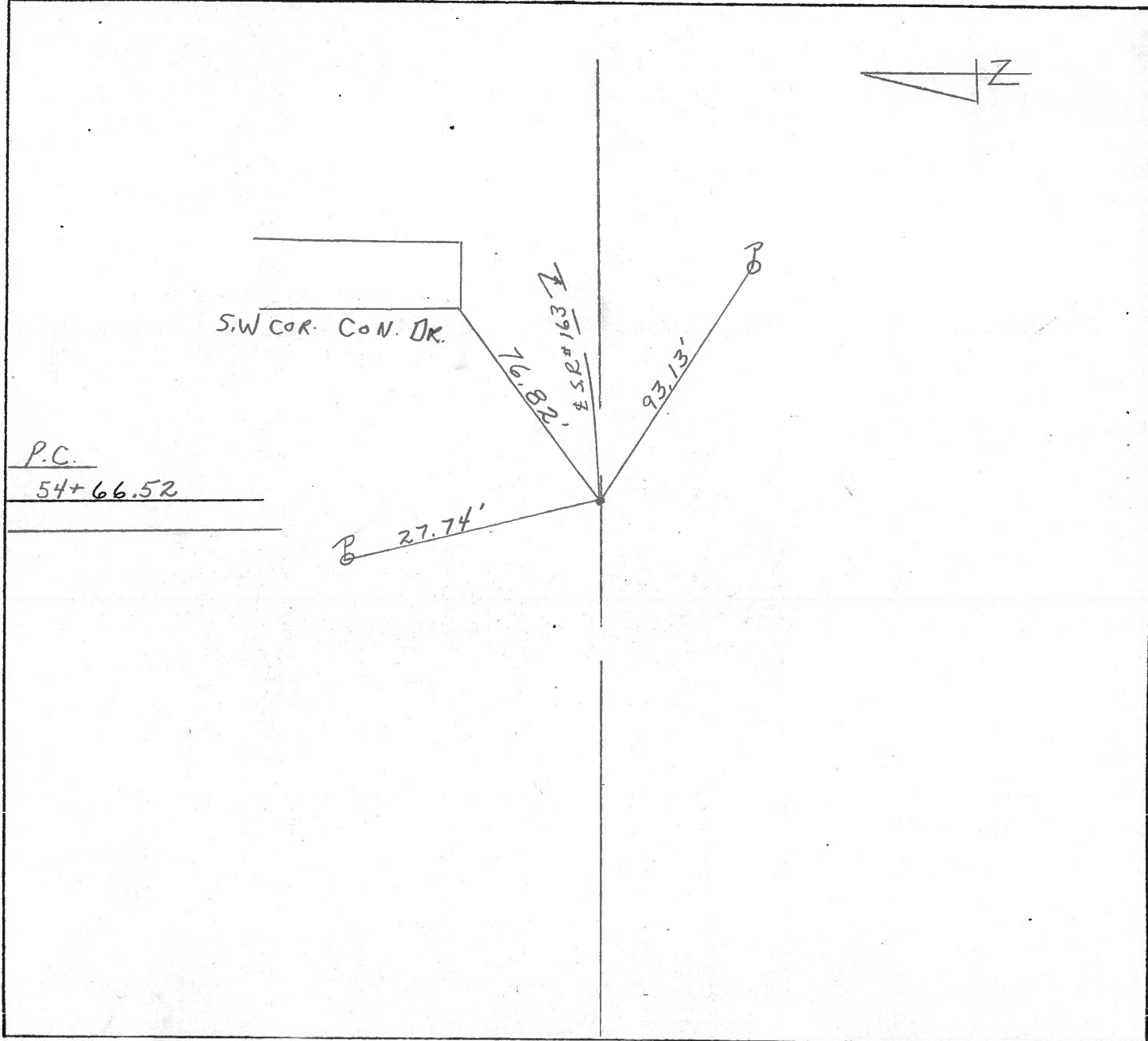
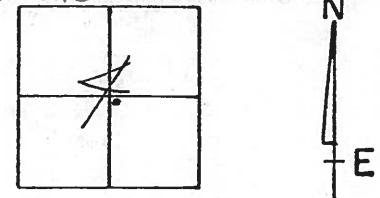
COUNTY Ottawa

TOWNSHIP Salem

SECTION 4

T 6 N R 15 E
VILLAGE OF OAK HARBOR

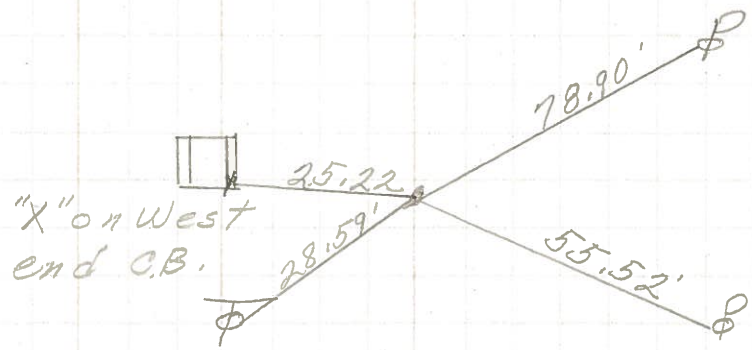
TYPE MONUMENT Set PK + Washer
ON SURFACE - BELOW PK. & WASHER
LEFT - ¢ PAV'T. - RIGHT 2' RT. & Pvm't
 TO EDGE PAVEMENT
S.L.M. Sta. 54+66.52



PERSONNEL	TITLE	PERSONNEL	TITLE
COUNTY <u>Ottawa</u> DATE <u>3-11-70</u>			
S. R. <u>163</u> WEATHER _____			
SEC. <u>Oak Harbor East</u> TEMP. _____			
DESCRIPTION <u>Sec 4 salem Twp.</u> JOB NO. _____			
	LEFT	CENTER LINE	RIGHT

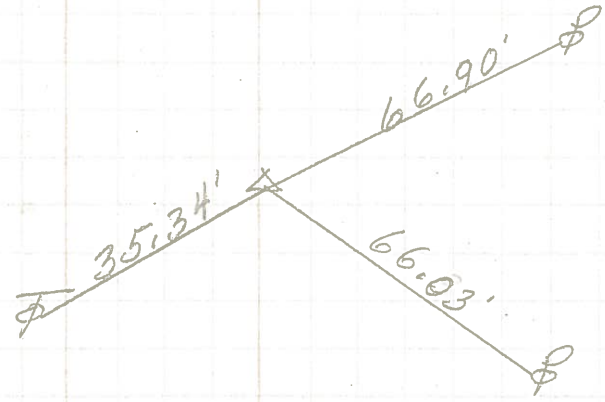
P.T.
56+90.81

(58)



P.I.
55+78.78
 $\Delta = 4^{\circ}29' Lt.$
Reset headless
P.K. Nail

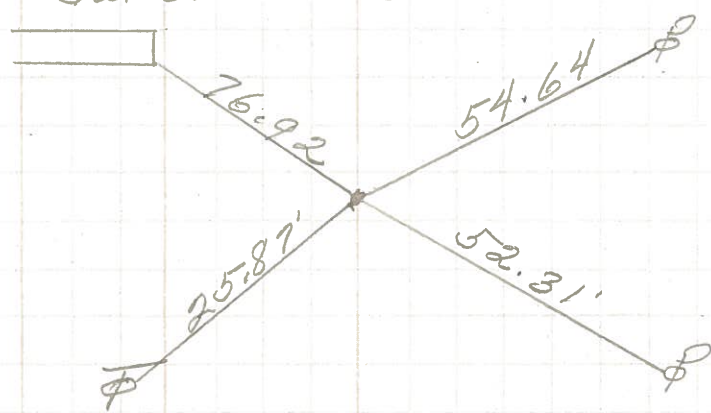
(57)



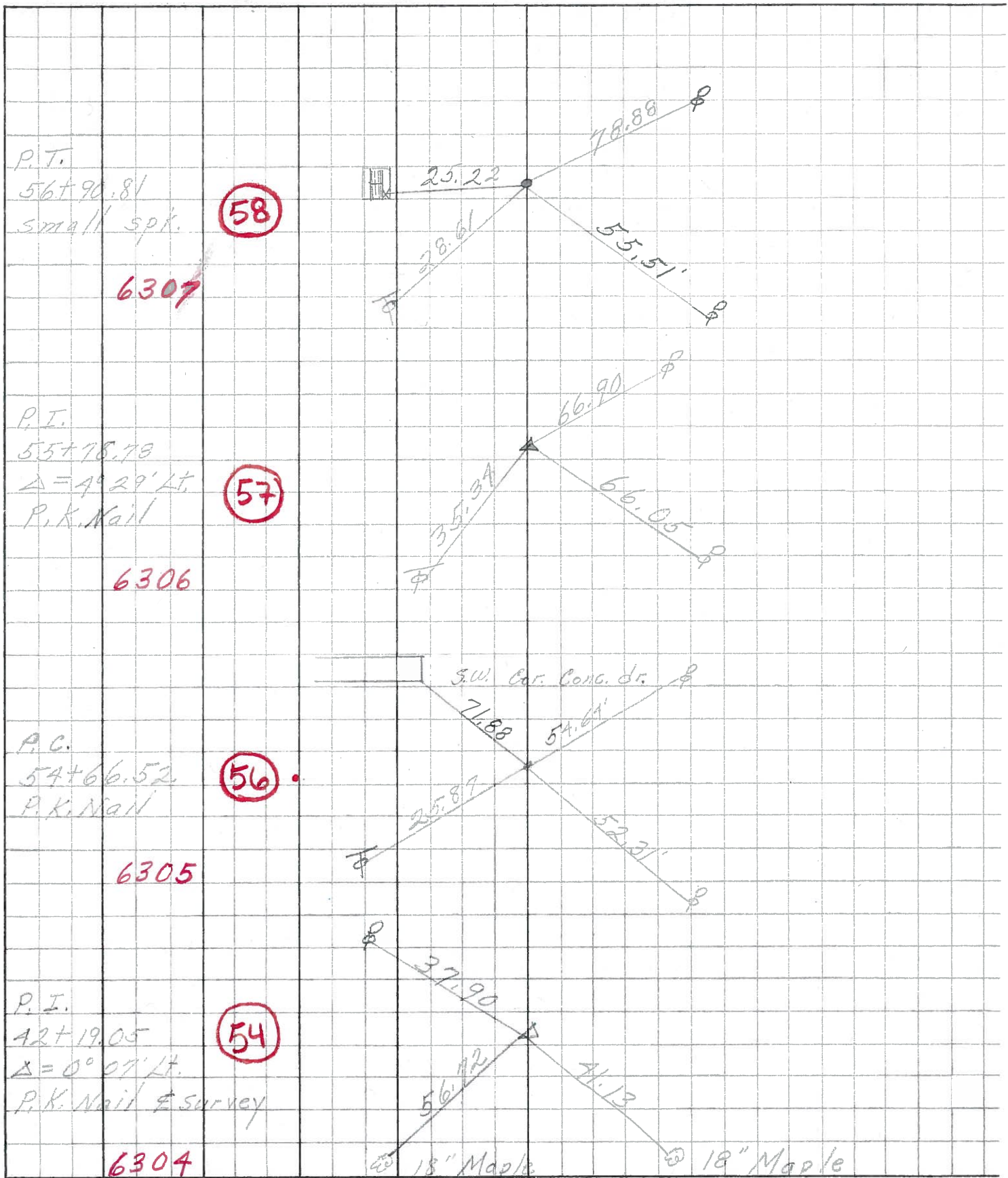
SW cor conc. drive

P.C.
54+66.52
P.K. Nail

(56)



PERSONNEL	TITLE	PERSONNEL	TITLE	COUNTY	DATE
<u>Schneider</u>		<u>Potts</u>		<u>Ottawa</u>	<u>Aug. 1968</u>
<u>Mosser</u>				S. R. <u>163</u>	WEATHER
<u>Barbour</u>				SEC. <u>Dak Harbor East</u>	TEMP.
<u>Redding</u>					
DESCRIPTION	<u>Ties for Control Points</u>				JOB NO.



PERSONNEL TITLE PERSONNEL TITLE

COUNTY Ottawa

DATE Feb. 19, 1963

Krabich

Xowaleski

Geymar

Bruggeman

S. R. # 163

WEATHER

SEC. E-2 (pt)

TEMP.

DESCRIPTION Oak Harbor Mon. Locations East

JOB NO.

LEFT

CENTER LINE

RIGHT

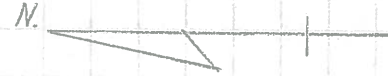
RR Spike
Feb 19, 1963

50B

120

6" Steel
Filling Sta
Light Pole

Near Edge Cor Conc Light Pole Base
Filling Sta



SR

SR

107

44.15'

SR

SR

X on Top Sand Stone
Bldg Cor

Near Cor Brick Bldg SW

40+04.60 & Maple f SR #163
& Survey
PK. Nail

53

1

X SE Cor Lamp
base

28.92'

PK

28.38'

E Curb 3.5' of walk

X NE Cor Conc Lamp base

42+19.05
P.I. A=0°-07' Lt.
& Survey
R/W
PK. Nail

54

2

SE Cor Lamp
base

37.90'

PK

52.00'

6" Elm
Shi

51.33'

NE Cor Conc Lamp base

54+66.52
P.C.
PK. Nail

56

3

PK

25.86'

PK

52.32'

54.60'