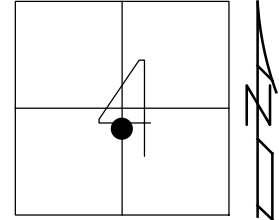


O.D.O.T. DISTRICT 2 SURVEY OFFICE (USE ONLY)

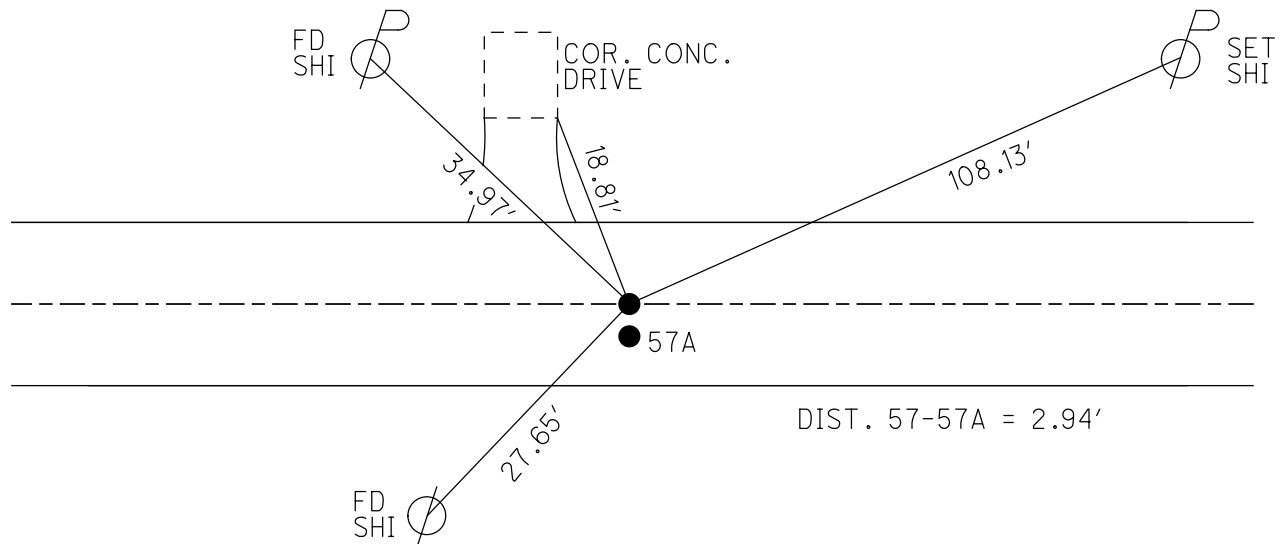
PERSONNEL	REFERENCE NO. <u>57</u>	SHEET <u>21</u> OF <u>74</u>
NOTES <u>HOMAN</u>	DATE <u>7-7-17</u>	ROUTE <u>SR 163</u>
H.C. <u>LEU</u>	WEATHER <u>CLOUDY</u>	COUNTY <u>OTTAWA</u>
R.C. <u>CARSON</u>	TEMP. <u>77°</u>	TOWNSHIP <u>SALEM</u>
<u>POORE</u>		SECTION <u>4</u>
DWG BY <u>JAMES</u>	PID <u>95757</u>	T <u>6</u> N R <u>15</u> E

TYPE MONUMENT P.K./WASHER
 ON SURFACE - ~~BELOW~~ ON
 OFFSET \odot PAVEMENT ON LT : RT
12.4' TO RT EDGE PAVEMENT
 STATION: 781+50



HORZ.DATUM: NAD83 2011 GEOID: NAVD88 2012A
 GRID: NORTHING: 671325.399 EASTING: 1794730.607

RECORD: P.I.
 STA 55+78.66
 FD P.K./WASHER
 8-2-00, TMR
 SET P.K./WASHER
 11-29-00, SAH
 FD P.K./WASHER
 REFA57
 5-5-16, DCH
 7-7-17, JLL
 SET MAG/WASHER
 1-4-19, JLL



O.D.O.T. DISTRICT 2 SURVEY OFFICE

PERSONNEL _____

REFERENCE NO. 57

SHEET 13 OF 63

NOTES Cord es

H.C. Rousos

R.C. Kangren

DATE 8-2-00

WEATHER Sunny

TEMP. 78°

ROUTE 163

COUNTY Ottawa

TOWNSHIP Salem

SECTION 4

T 6 N R 15 E

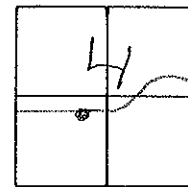
TYPE MONUMENT (A) PK/W (B) PK-Shank

(ON SURFACE) - BELOW Surf.

LEFT - ☉ PAV'T. - RIGHT (A) ☉ (B) -3' RT

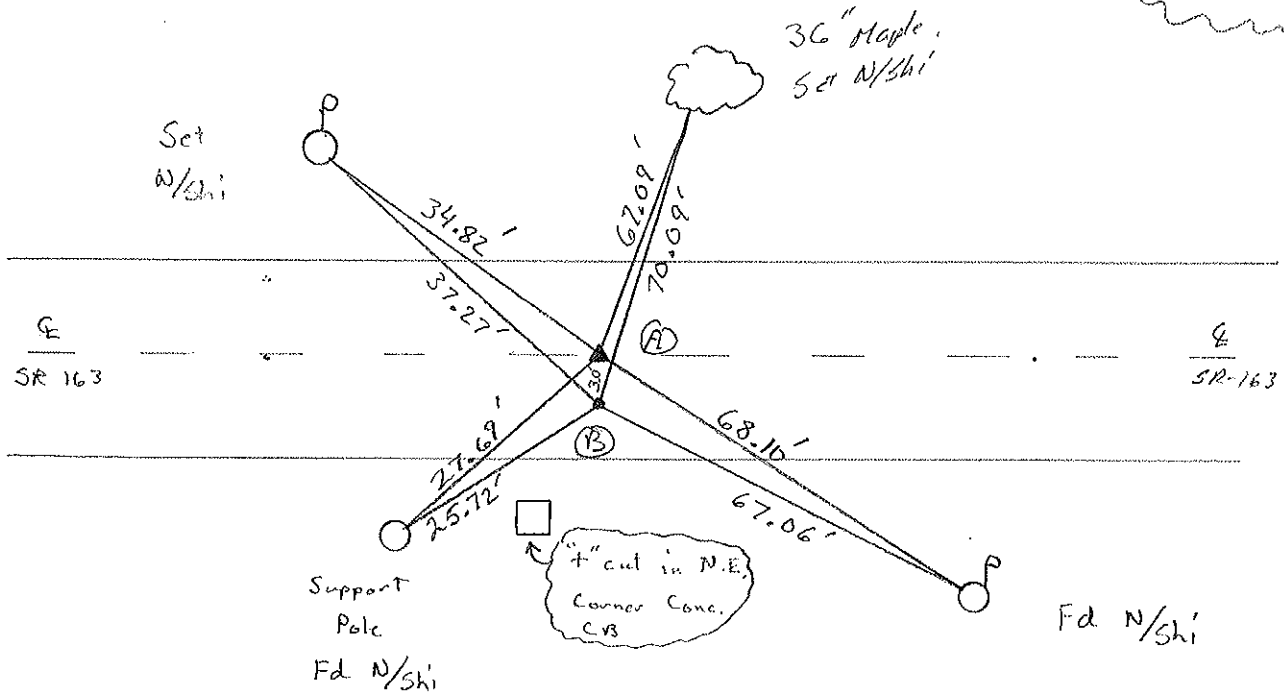
(A) 12.9 TO RT. EDGE PAVEMENT (B) 9.4' to RT EOP

S.L.M. 781+50



Record: PI - Sta 55+78.66
 & Survey (6-1-47 R/W Plan)

Set PK/W
 11-29-00
 SAH
 both points



Distance
 between
 Points A-B
 3.0'

O.D.O.T. DISTRICT 2 SURVEY OFFICE

PERSONNEL _____

REFERENCE NO. _____

SHEET 1 OF 5

NOTES CHEKIEY

H.C. RIPPLE

DATE 11-23-1992

ROUTE 163

R.C. BARBOUR

WEATHER CLOUDY

COUNTY OTAWA

GEYMAN

TEMP. 40°

TOWNSHIP SALEM

SECTION 4

T6NR15E

TYPE MONUMENT PK / WASHER

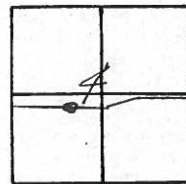
ON SURFACE - BELOW

~~LEFT~~ - PAV'T. - RIGHT

TO EDGE PAVEMENT

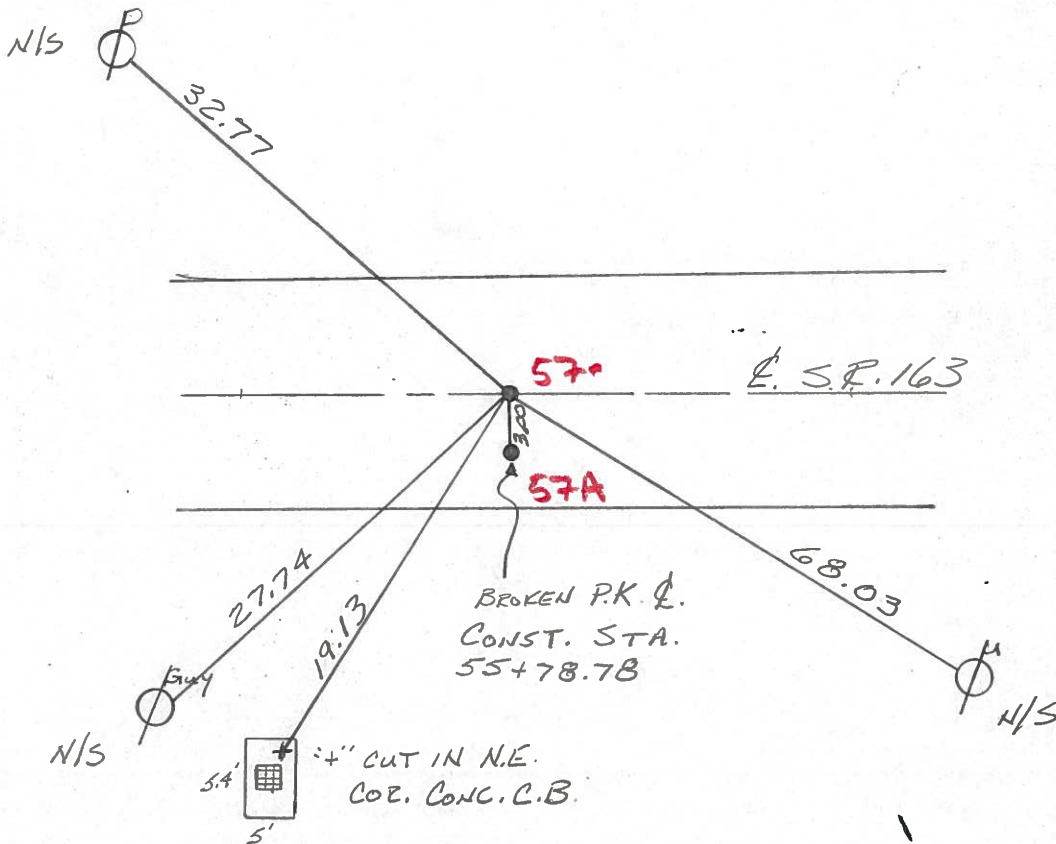
S.L.M. _____

57



REF. STA. 55+78.66 E. SURVEY (6-1-1947 R/W PLAN)

SET ATOP " + " FOUND IN OLD BRICK PAV'T. 0.8' ± BELOW SURFACE



O.D.O.T. DISTRICT 2 SURVEY OFFICE

PERSONNEL

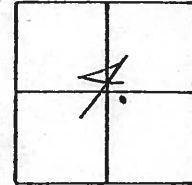
NOTES Cronin
 H.C. Ripple
 R.C. BARBOUR
Geyman

REFERENCE NO. 57
 DRAWN 7/05/88
 DATE 5/24/90
 WEATHER cloudy
 TEMP. 70°

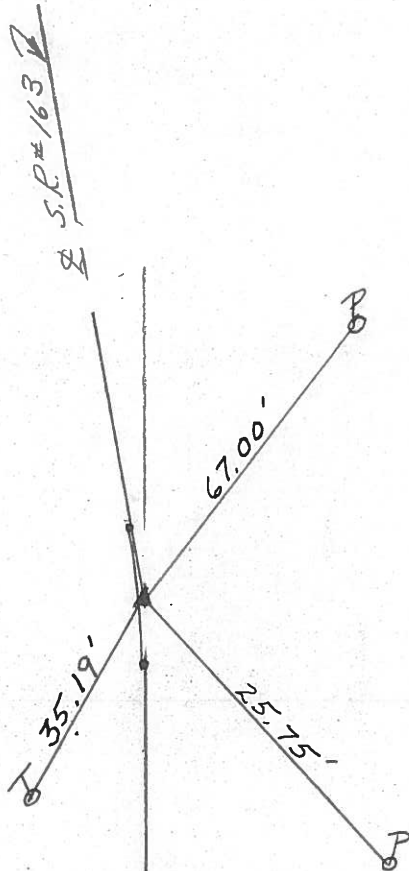
SHEET 8 OF _____
 ROUTE #163
 COUNTY Ottawa
 TOWNSHIP Salem
 SECTION 4

T 6 N R 15 E
 VILLAGE of OAK HARBOR

TYPE MONUMENT Set, P.K. Washer
 ON SURFACE - BELOW Headless P.K. Nail
 LEFT - ¢ PAV'T. - RIGHT 3' RT. & Pav.T.
 TO _____ EDGE PAVEMENT
 S.L.M. Sta. 55 + 78.78



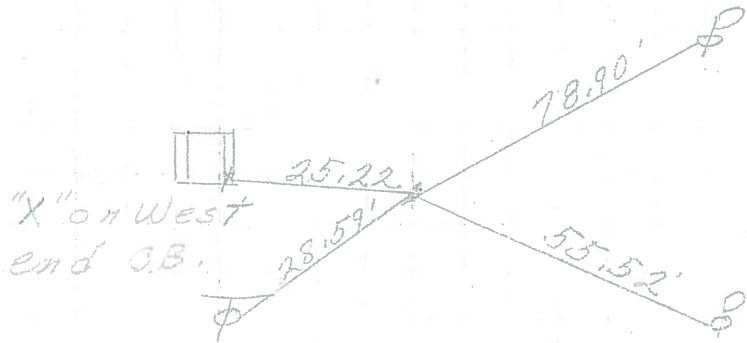
P.I.
Δ = 04°29'00" Lt.



PERSONNEL	TITLE	PERSONNEL	TITLE
COUNTY <u>Ottawa</u> DATE <u>3-11-70</u>			
S. R. <u>163</u> WEATHER _____			
SEC. <u>Oak Harbor East</u> TEMP. _____			
DESCRIPTION <u>Sec 4 Salem Twp.</u> JOB NO. _____			
	LEFT	CENTER LINE	RIGHT

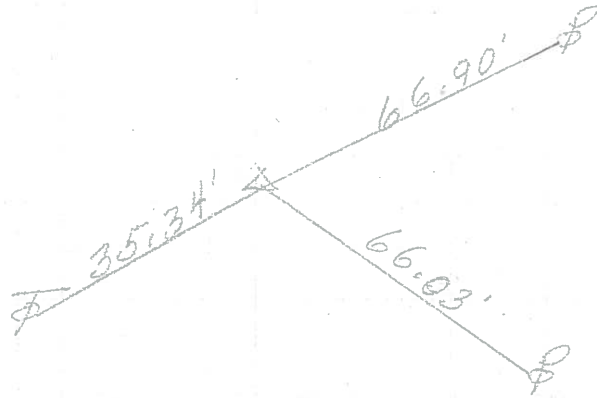
P.T.
56+90.81

58



P.I.
55+78.78
 $\Delta = 4^{\circ}29' Lt.$
Reset headless P.K. Nail

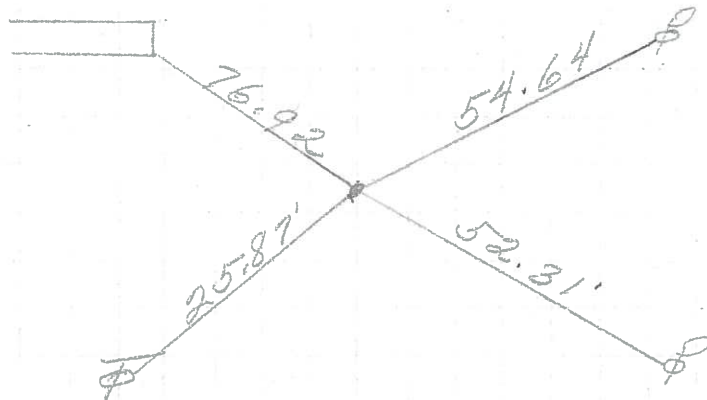
57



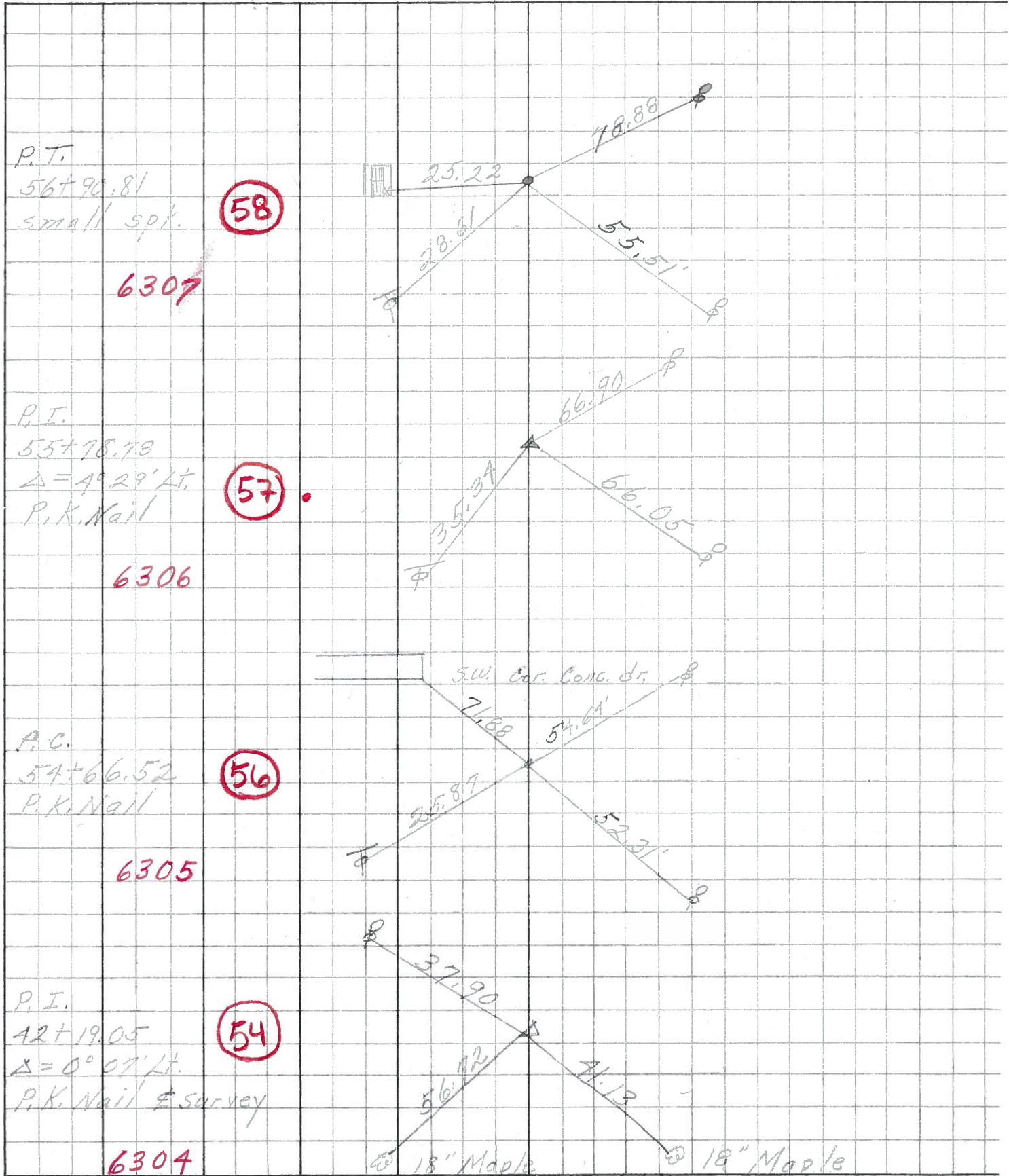
SW cor conc-drive

P.C.
54+66.52
P.K. Nail

56



PERSONNEL	TITLE	PERSONNEL	TITLE	COUNTY	DATE
<u>Schneider</u>		<u>Potts</u>		<u>Ottawa</u>	<u>Aug. 1960</u>
<u>Mosser</u>				S. R. <u>163</u>	WEATHER
<u>Barbour</u>				SEC. <u>Dak Harbor East</u>	TEMP.
<u>Redding</u>					
DESCRIPTION	<u>Ties for control points</u>				JOB NO.
	LEFT	CENTER LINE	RIGHT		



PERSONNEL TITLE PERSONNEL TITLE

COUNTY Ottawa

DATE Feb. 19, 1964

Xrabihh

Xowaleski

Geyman

Bruggeman

S. R. # 163

SEC. E-2 (H)

WEATHER

TEMP.

DESCRIPTION Oak Harbor Map. Locations - East

JOB NO.

LEFT

CENTER LINE

RIGHT

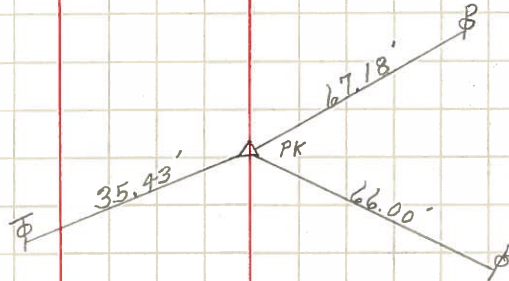
55+78.78

P.I. 4°29' Lt

P.K. Nail

57

#4



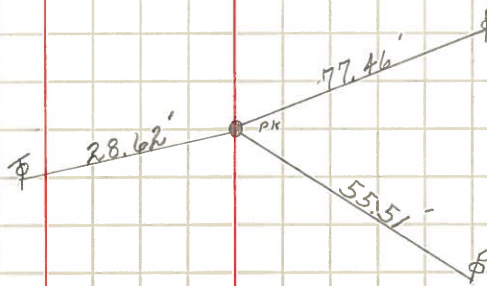
56+90.81

P.T.

P.K. Nail

58

#5



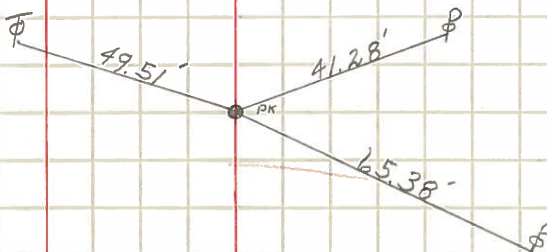
59+71.27

P.C.

P.K. Nail

59

#6



61+87.28

P.I. Δ=33°34' Lt

P.K. Nail OVER I. Pin.

60

#7

