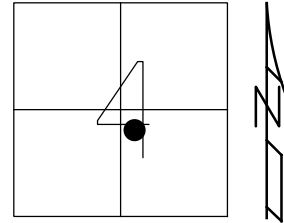


O.D.O.T. DISTRICT 2 SURVEY OFFICE (USE ONLY)

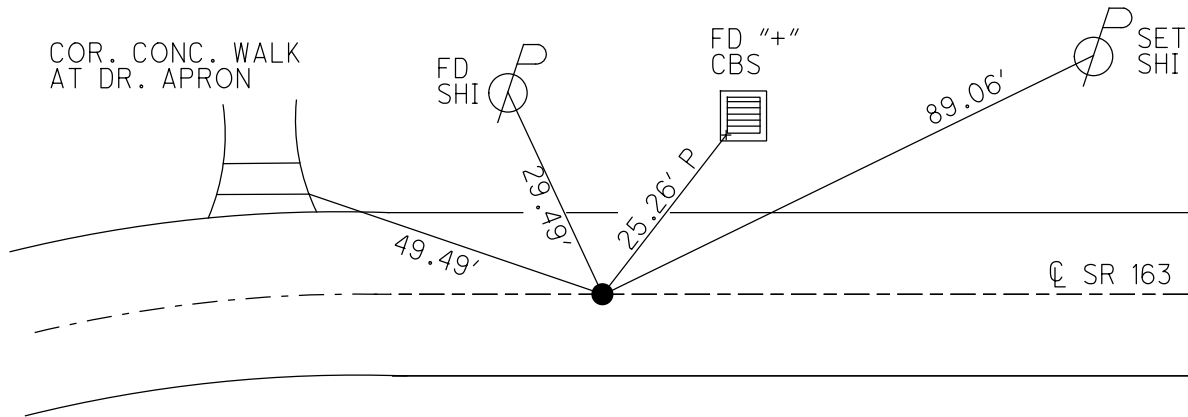
PERSONNEL \_\_\_\_\_ REFERENCE NO. 58 SHEET 23 OF 74  
 NOTES HOMAN DATE 7-7-17 ROUTE SR 163  
 H.C. LEU WEATHER CLOUDY COUNTY OTTAWA  
 R.C. CARSON TEMP. 77° TOWNSHIP SALEM  
       POORE SECTION 4  
 DWG BY JAMES PID 95757 T 6 N R 15 E

TYPE MONUMENT P.K./WASHER  
~~ON SURFACE~~ - BELOW 0.6'  
 OFFSET  $\odot$  PAVEMENT ON LT : RT  
11.4' TO RT EDGE PAVEMENT  
 STATION: 782+62



HORZ. DATUM: NAD83 2011 GEOID: NAVD88 2012A  
 GRID: NORTHING: 671329.170 EASTING: 1794842.550

RECORD: P.T.  
 STA 56+90.69  
 FD P.K./WASHER  
 8-2-00, TMR  
 SET P.K./WASHER  
 12-5-00, SAH  
 FD P.K./WASHER  
 2" DOWN  
 5-5-16, DCH  
 FD P.K./WASHER  
 7-7-17, JLL  
 SET MAG/WASHER  
 1-4-19, JLL





O.D.O.T. DISTRICT 2 SURVEY OFFICE

PERSONNEL

REFERENCE NO. 58

SHEET 9 OF     

NOTES Cronin

DRAWN 7/05/88

H.C. Ripple

DATE 5/24/90

ROUTE #163

R.C. BARBOUR

WEATHER cloudy

COUNTY Ottawa

Geyman

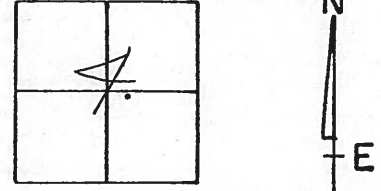
TEMP. 70°

TOWNSHIP Salem

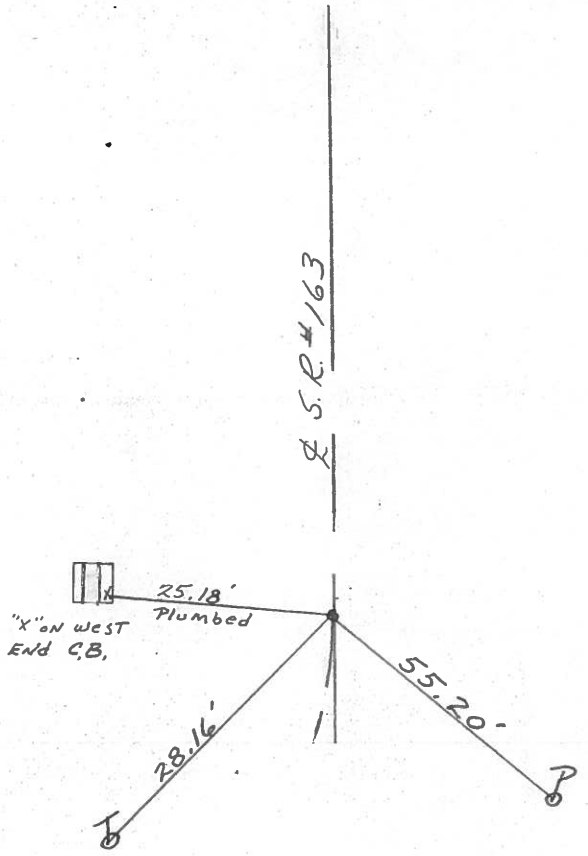
SECTION 4

T. 6 N R. 15 E  
VILLAGE OF DARK HARBOR

TYPE MONUMENT Set P.K. Washer  
ON SURFACE - BELOW 0.6 Below Pav't. P.K. Nail  
LEFT - ☉ PAV'T. - RIGHT       
     TO      EDGE PAVEMENT  
S.L.M. Sta. 56+90.69



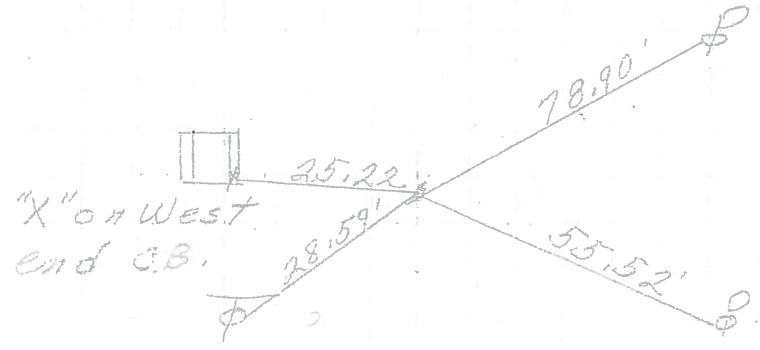
P.T.  
56+90.69



PERSONNEL	TITLE	PERSONNEL	TITLE	COUNTY	DATE
				Ottawa	3-11-70
				S. R. 163	WEATHER
				SEC. Oak Harbor East	TEMP.
DESCRIPTION	Sec 4 Salem Twp.				JOB NO.
	LEFT	CENTER LINE	RIGHT		

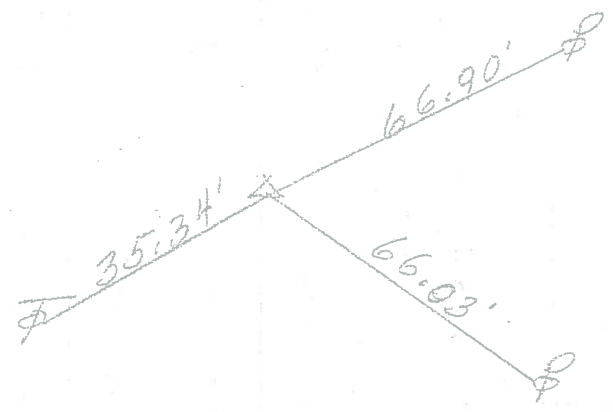
P.T.  
56+90.81

58



P.I.  
55+78.78  
 $\Delta = 4^{\circ}29' Lt.$   
Reset headless P.K. Nail

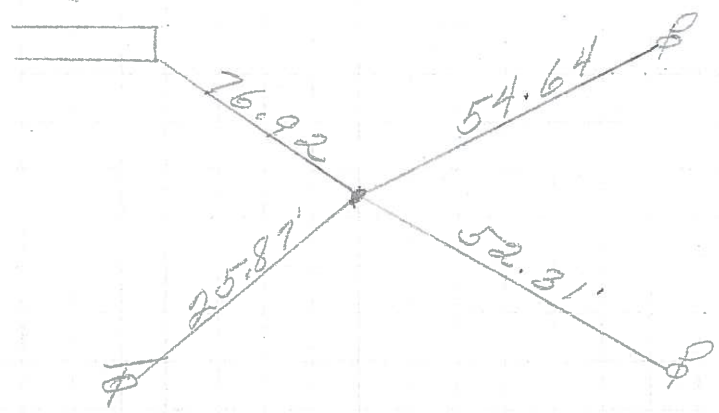
57



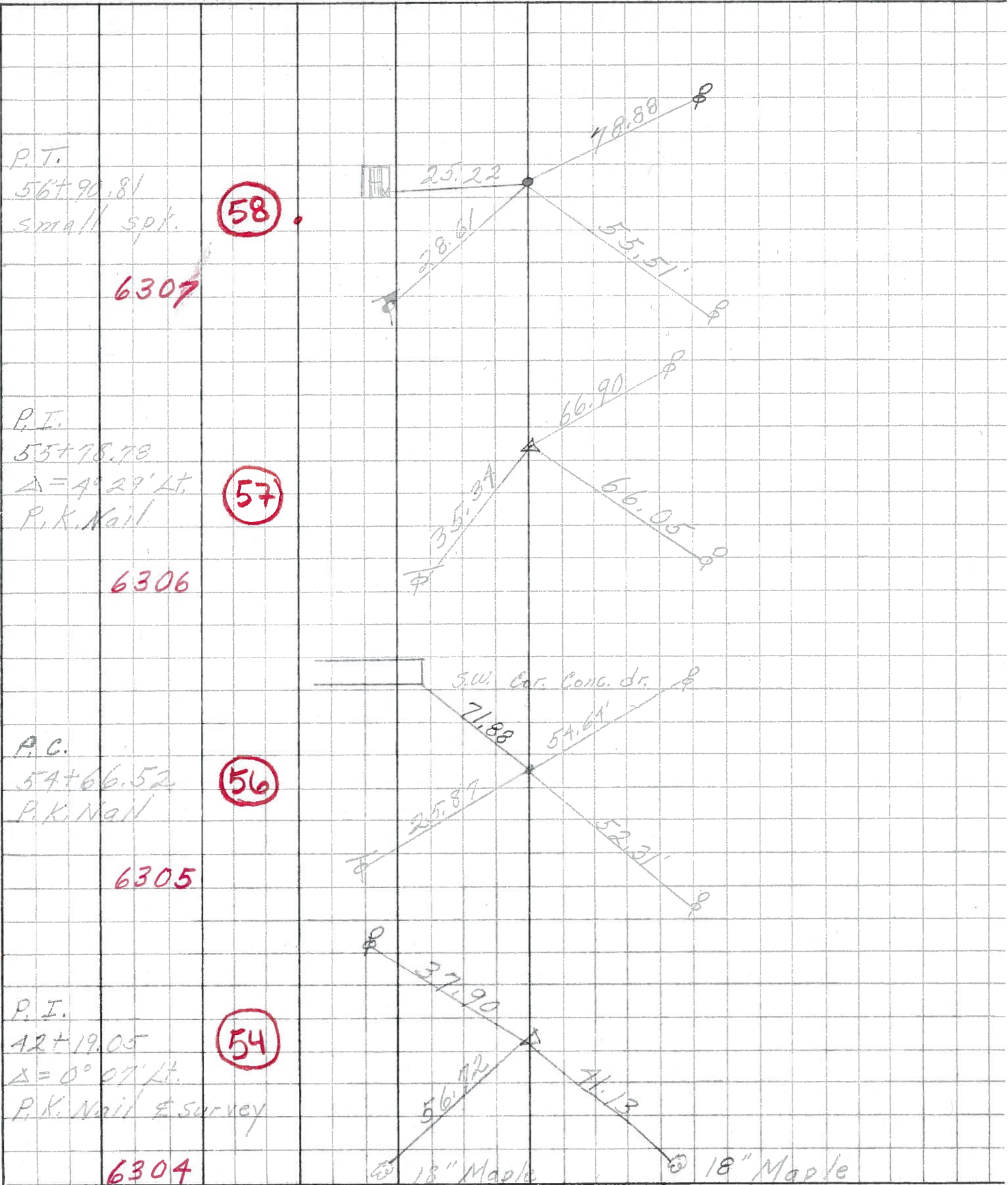
SWI con conc-drive

P.C.  
54+66.52  
P.K. Nail

56



PERSONNEL	TITLE	PERSONNEL	TITLE	COUNTY	DATE
<u>Schneider</u>		<u>Potts</u>		<u>Ottawa</u>	<u>Aug. 1961</u>
<u>Mosser</u>				S. R. <u>163</u>	WEATHER
<u>Barbour</u>				SEC. <u>Dak Harbor East</u>	TEMP.
<u>Redding</u>					
DESCRIPTION	<u>Ties for control Points</u>				JOB NO.
	LEFT	CENTER LINE	RIGHT		



P.T.  
56+90.81  
small spk.  
**6307**

**58**

P.T.  
55+78.78  
Δ=4°29' Lt.  
P.K. Nail  
**6306**

**57**

P.C.  
54+66.52  
P.K. Nail  
**6305**

**56**

P.I.  
42+19.05  
Δ=0°07' Lt.  
P.K. Nail & Survey  
**6304**

**54**

18" Maple

18" Maple