

O.D.O.T. DISTRICT 2 SURVEY OFFICE (USE ONLY)

PERSONNEL

REFERENCE NO. 59

SHEET 24 OF 74

NOTES HOMAN

DATE 7-7-17

ROUTE SR 163

H.C. LEU

WEATHER CLOUDY

COUNTY OTTAWA

R.C. CARSON
POORE

TEMP. 77°

TOWNSHIP SALEM

SECTION 4

DWG BY JAMES PID 95757

T 6 N R 15 E

TYPE MONUMENT MAG/WASHER

ON SURFACE - ~~BELOW~~ ON

OFFSET 1.0' RT : RT

10.4' TO RT EDGE PAVEMENT

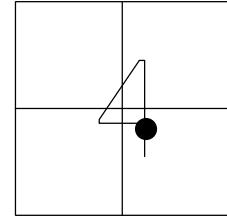
STATION: 785+43

HORIZ.DATUM: NAD83 2011

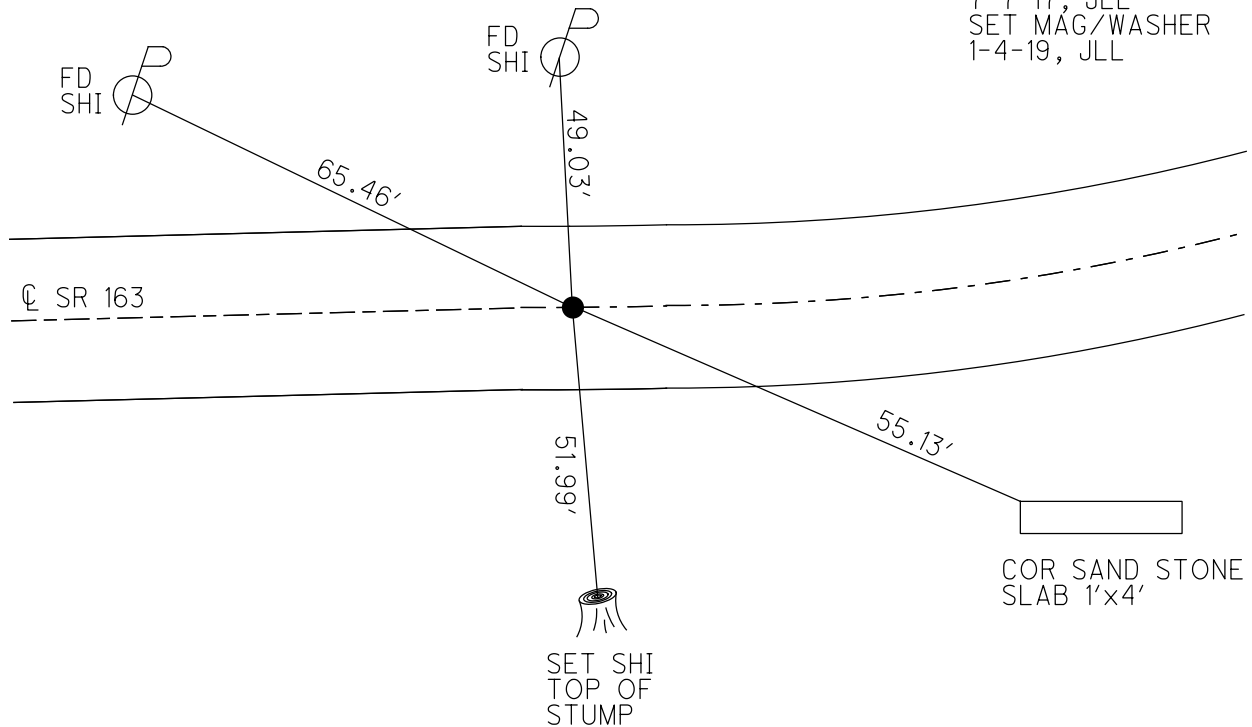
GEOID: NAVD88 2012A

GRID: NORTHING: 671345.022

EASTING: 1795121.879



RECORD: P.C.
STA 59+71.27
FD P.K./WASHER
8-2-00, TMR
SET P.K./WASHER
12-5-00, SAH
SET MAG/WASHER
5-5-16, DCH
FD MAG/WASHER
7-7-17, JLL
SET MAG/WASHER
1-4-19, JLL



O.D.O.T. DISTRICT 2 SURVEY OFFICE

PERSONNEL

REFERENCE NO. 59

SHEET 15 OF 63

NOTES KARGER

H.C. CORDES

R.C. HUSS

DATE 8-200

WEATHER Ptly cloudy

TEMP. 82°

ROUTE S.R. 163

COUNTY OTTAWA

TOWNSHIP SALEM

SECTION 4

T. 6 N. R. 15 E

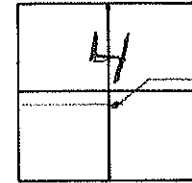
TYPE MONUMENT PK/W

ON SURFACE - ~~NO~~ YES

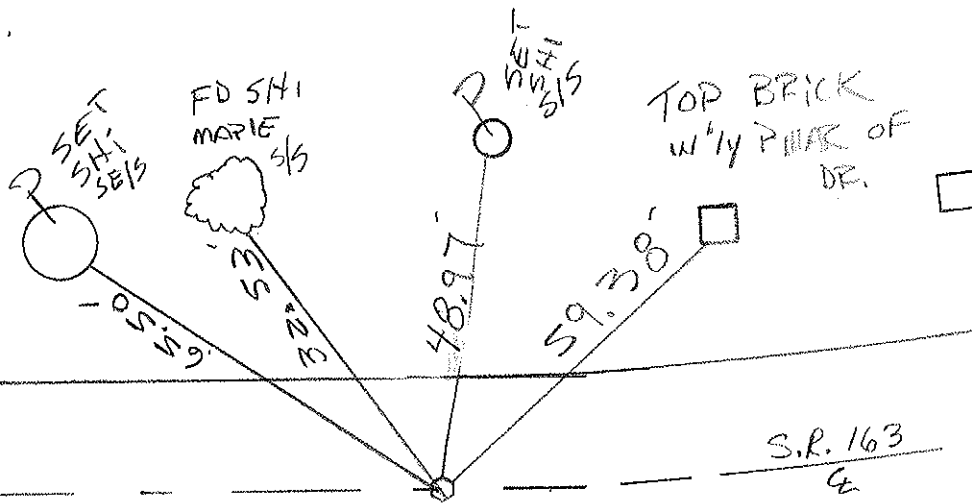
~~NO~~ - PAV'T. - RIGHT 11.0

10.4 TO RT EDGE PAVEMENT

S.L.M. 785+43



FD PK & WASHER
 RECORD STA: P.C.
 59+71.27
 CONST.



SET PK & WASHER
 12-5-00
 SAH

O.D.O.T. DISTRICT 2 SURVEY OFFICE

PERSONNEL _____

REFERENCE NO. 59

SHEET 10 OF _____

NOTES Cronin

DRAWN 7/05/88

H.C. Ripple

DATE 5-24-90

R.C. BARBOUR

WEATHER cloudy

Geyman

TEMP. 70°

ROUTE # 163

COUNTY Ottawa

TOWNSHIP Salem

SECTION 4

T 6 N R 15 E

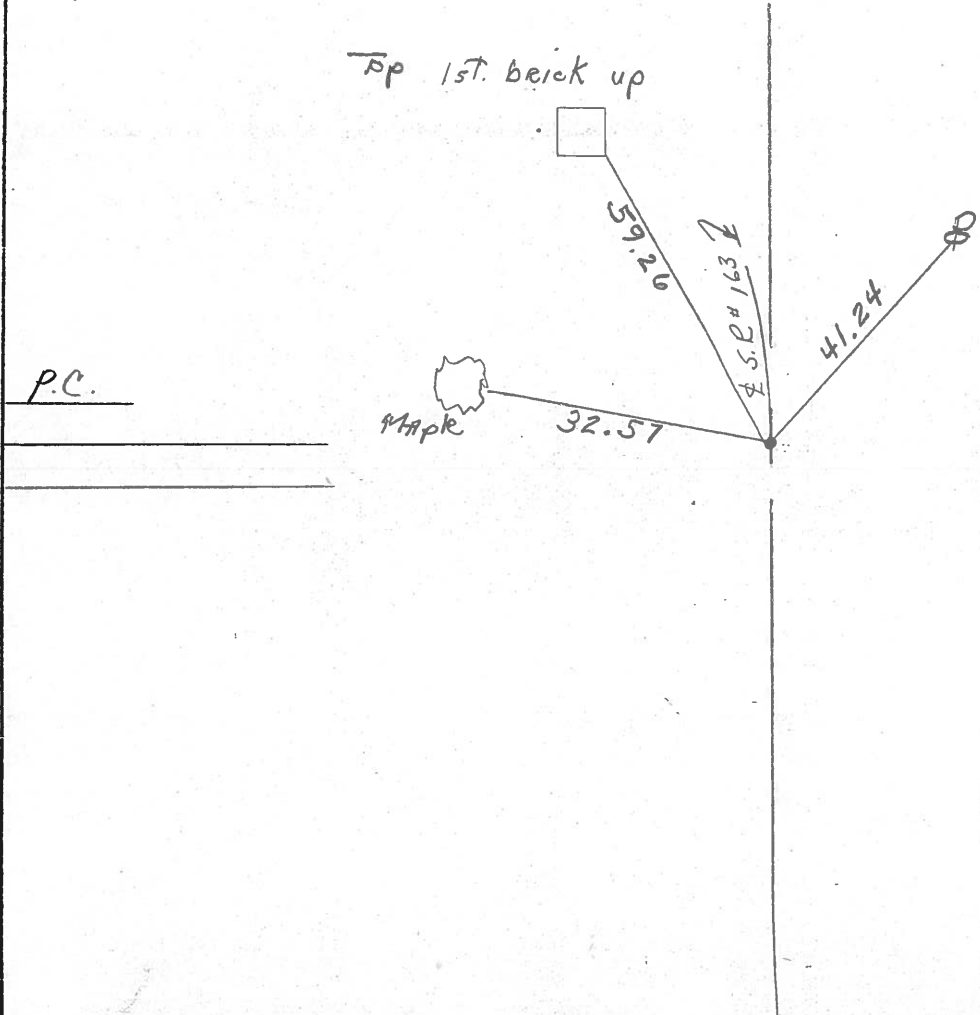
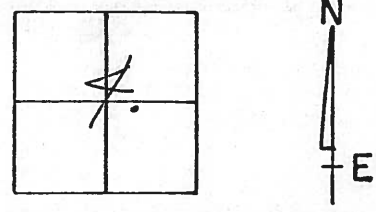
TYPE MONUMENT set P.K. + Washer

ON SURFACE - BELOW _____

LEFT - ☉ PAV'T. - RIGHT ☉

TO _____ EDGE PAVEMENT

S.L.M. Sta. 59+71.27



PERSONNEL TITLE PERSONNEL TITLE

COUNTY Ottawa DATE march 1970

S. R. 163 WEATHER _____

SEC. Oak Harbor-East TEMP. _____

DESCRIPTION sec 4 salem Twp. JOB NO. _____

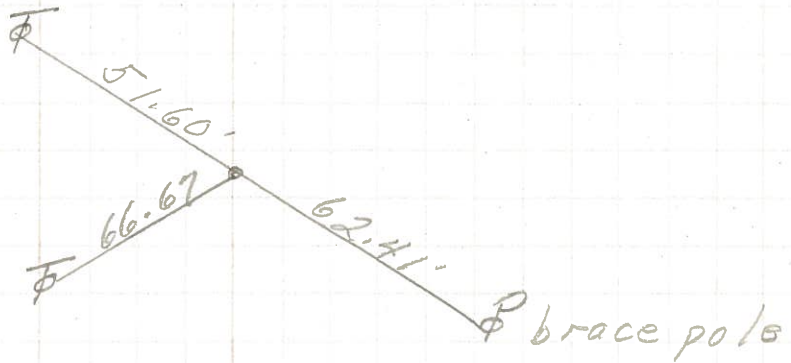
LEFT

CENTER LINE

RIGHT

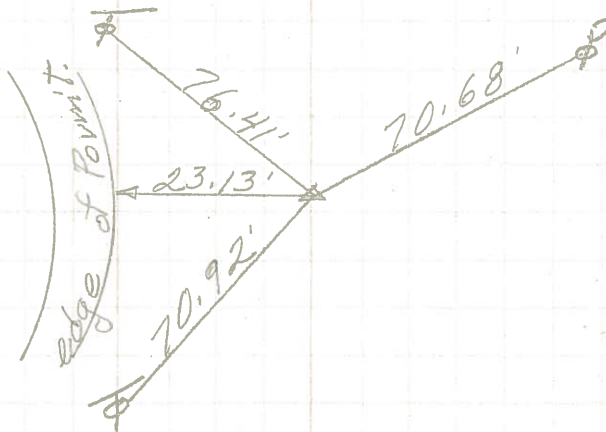
P.T.
63 + 90.85
P.K. Nail

(61)



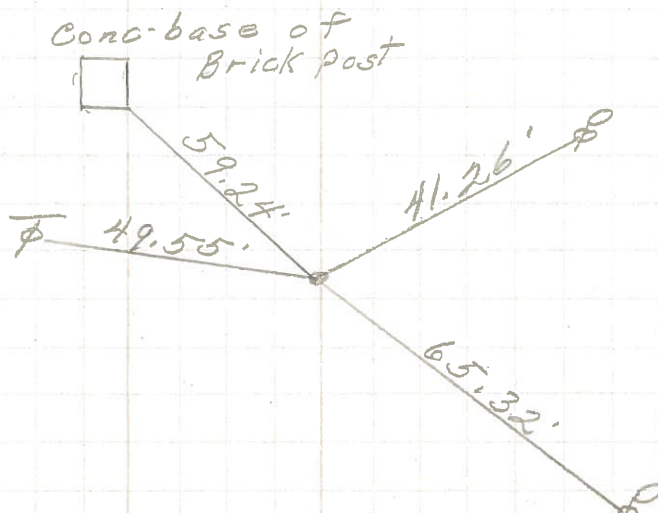
P.I.
61 + 87.28
 $\Delta = 33^\circ 34' Lt.$
Iron Pin

(60)

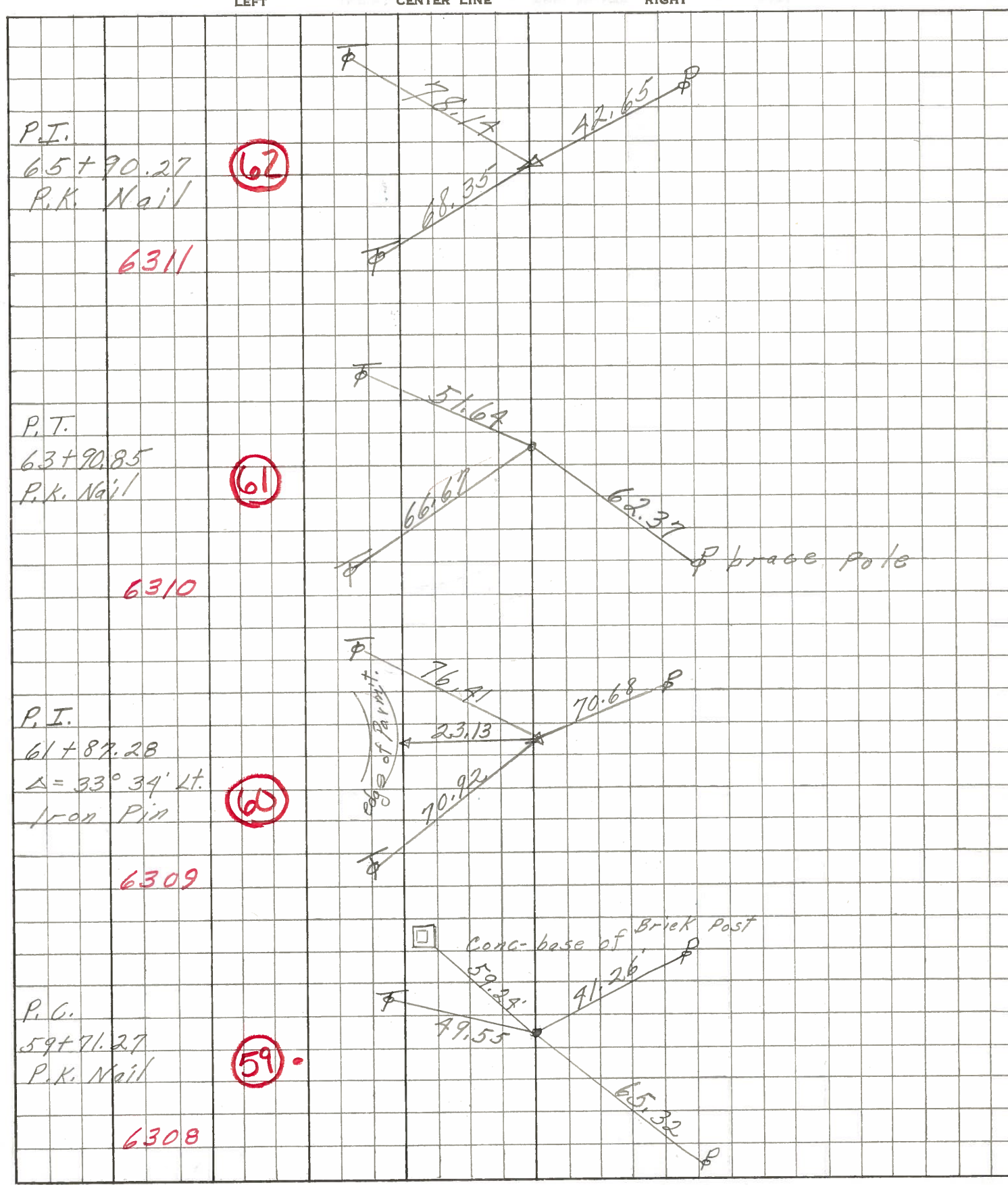


P.C.
59 + 71.27
P.K. Nail

(59)



PERSONNEL	TITLE	PERSONNEL	TITLE	COUNTY	DATE
<u>Schneider</u>		<u>Potts</u>		<u>Ottawa</u>	<u>Aug. 1968</u>
<u>Mosser</u>				S. R. <u>163</u>	WEATHER
<u>Barbour</u>				SEC. <u>Oak Harbor-East</u>	TEMP.
<u>Redding</u>					
DESCRIPTION	<u>Ties for Control Points</u>				JOB NO.



PERSONNEL TITLE PERSONNEL TITLE

Krabill
Kowaleski
Geyman
Bruggeman

COUNTY Ottawa DATE Feb. 19, 1964
S. R. # 163 WEATHER _____
SEC. E-2 (pt) TEMP. _____

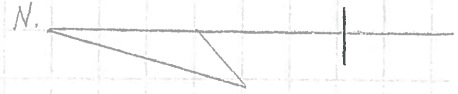
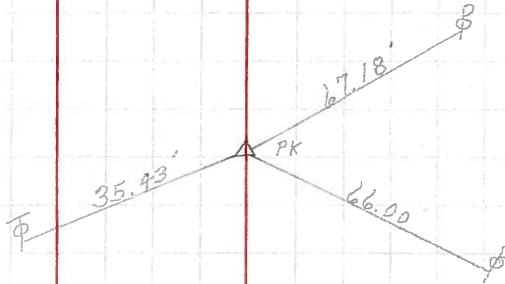
DESCRIPTION Oak Harbor Mtn. Locations - East JOB NO. _____

LEFT CENTER LINE RIGHT

55+78.78
P.I. $4^{\circ}29'Lt$
P.K. Trail

57

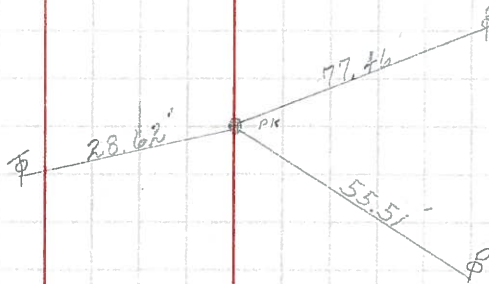
#4



56+90.81
P.I.
P.K. Trail

58

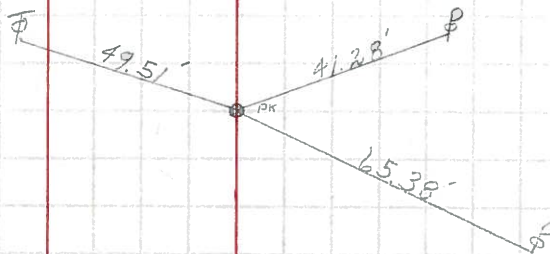
#5



59+71.27
P.C.
P.K. Trail

59

#6



61+87.28
P.I. $\Delta=33^{\circ}34' Lt$
P.K. Trail over I. Pin

60

#7

