

O.D.O.T. DISTRICT 2 SURVEY OFFICE (USE ONLY)

PERSONNEL

REFERENCE NO. 60

SHEET 25 OF 74

NOTES CORDES

DATE 8-2-00

ROUTE SR 163

H.C. ROUSOS

WEATHER CLOUDY

COUNTY OTTAWA

R.C. KARGER

TEMP. 82°

TOWNSHIP SALEM

SECTION 4

DWG BY JAMES

PID 95757

T 6 N R 15 E

TYPE MONUMENT IPIN

ON SURFACE - BELOW ON

OFFSET \odot PAVEMENT - LT : RT

22' TO RT EDGE PAVEMENT

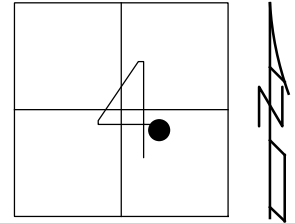
STATION: 787+67

HORZ.DATUM: NAD83 2011

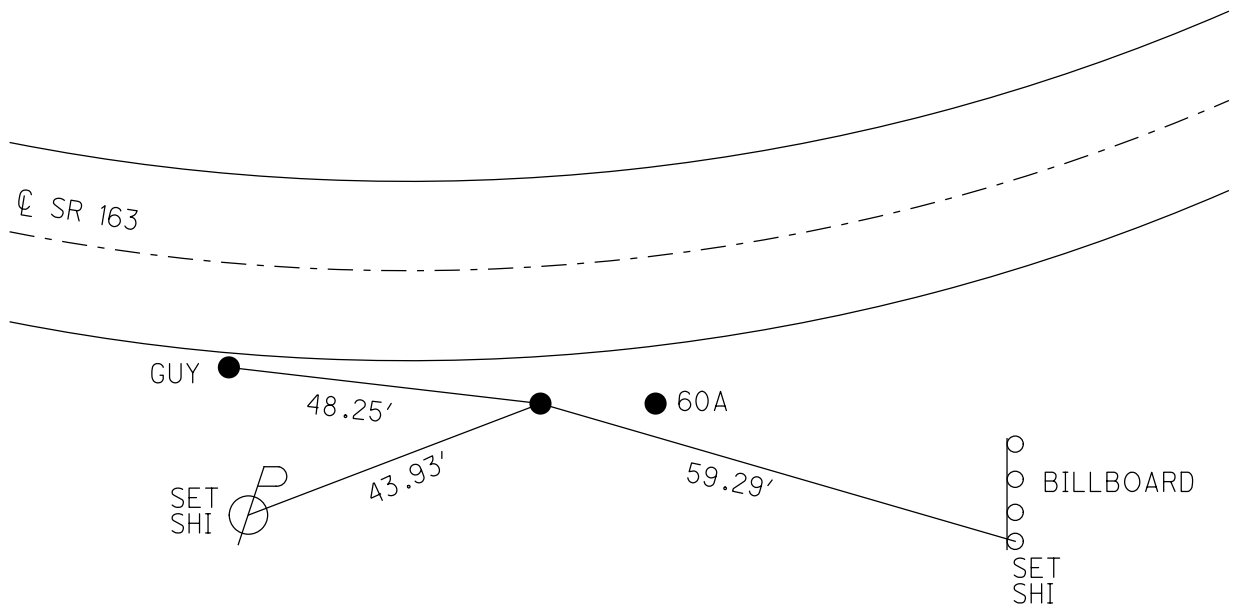
GEOID: NAVD88 2012A

GRID: NORTHING: 671353.566

EASTING: 1795349.634



RECORD: P.I.
 $\Delta = 33^\circ 34' \text{ LT}$
 STA 61+87.28
 FD 5/8" REBAR
 8-2-00, BC
 W/ CAP 7427
 CP101
 5-4-16, DCH
 1-4-19, JLL



DIST. 60-60A = 8.91' REC

O.D.O.T. DISTRICT 2 SURVEY OFFICE

PERSONNEL

REFERENCE NO. 60

SHEET 16 OF 63

NOTES Cordis

H.C. Rousos

R.C. Karger

DATE 8-2-00

WEATHER Cldy

TEMP. 82°

ROUTE S.R. 163

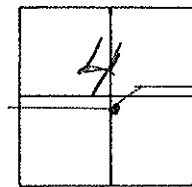
COUNTY OTTAWA

TOWNSHIP SALEN

SECTION 4

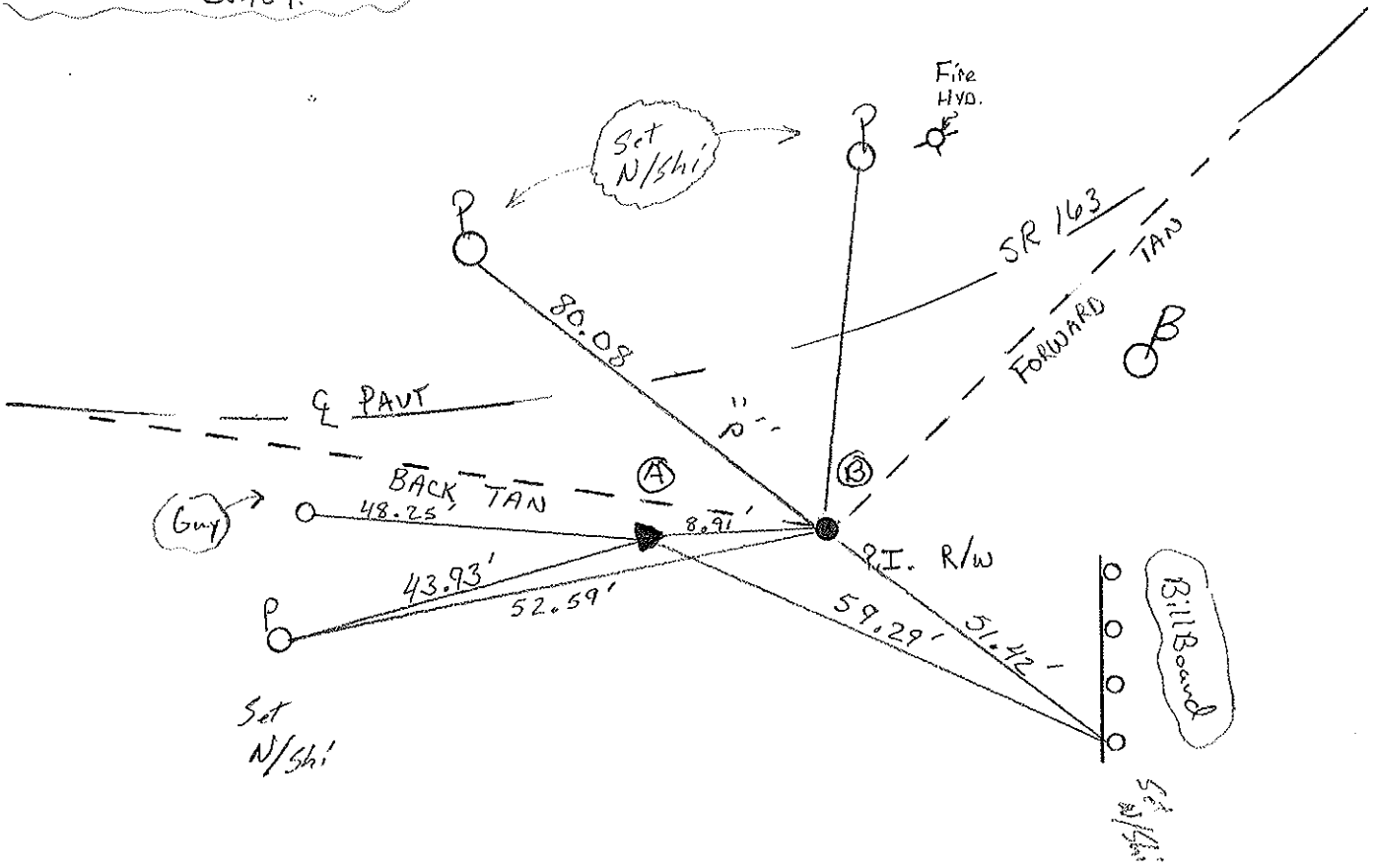
T. 6 N R. 15 E

TYPE MONUMENT ^(A) 5/8" Re-BAR - 40" Long
 ON SURFACE - ~~BELOW~~ Surface
~~LEFT OF PAVT.~~ - RIGHT off pavement
22' TO R+ EDGE PAVEMENT
 S.L.M. (A) = 787+67 (B) = 787+76



Record: ^(B)
 P.I. Sta 61+95.30 & Survey
 (6-1-1947 R/W PLANS)

Record A
 PI - Δ 33° 34' Lt,
 I Pin
 Plan Sta. = 61+87.28
 Const.



O.D.O.T. DISTRICT 2 SURVEY OFFICE

PERSONNEL _____

REFERENCE NO. 60

SHEET 11 OF _____

NOTES Ripple

H.C. BARBOUR

DATE 5-24-90

ROUTE # 163

R.C. Geyman

WEATHER Cloudy

COUNTY OTTAWA

TEMP. 70

TOWNSHIP Salem

SECTION 4

T6 N R 15 E

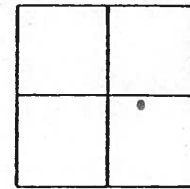
TYPE MONUMENT IRON PIN

ON SURFACE - BELOW _____

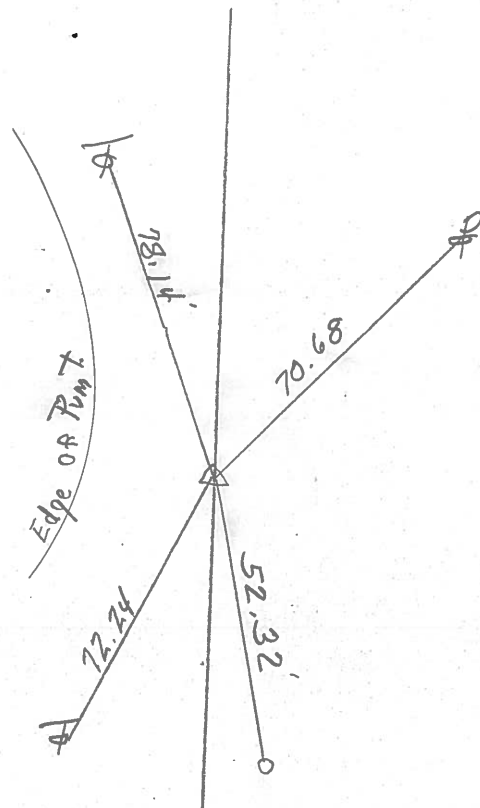
LEFT - & PAV'T. - RIGHT 19' RT. Edge Berm

TO _____ EDGE PAVEMENT

S.L.M. 61 + 87.28



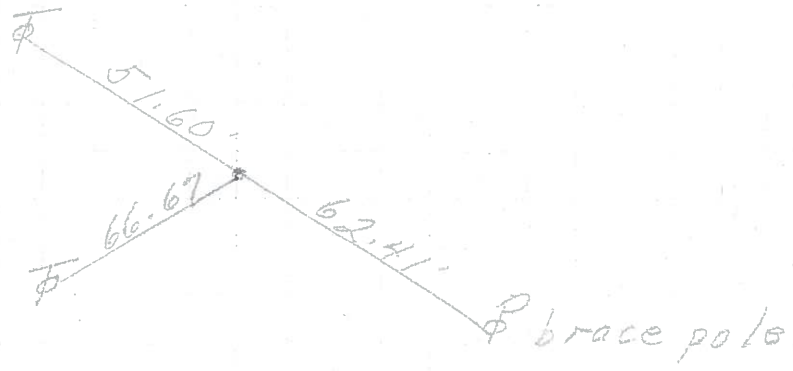
PI. Δ 33° 34' LT.
IRON PIN



PERSONNEL	TITLE	PERSONNEL	TITLE
COUNTY <u>Ottawa</u> DATE <u>march 1976</u>			
S. R. <u>163</u> WEATHER _____			
SEC. <u>Oak Harbor-East</u> TEMP _____			
DESCRIPTION <u>sec 4 salem Twp.</u> JOB NO. _____			
	LEFT	CENTER LINE	RIGHT

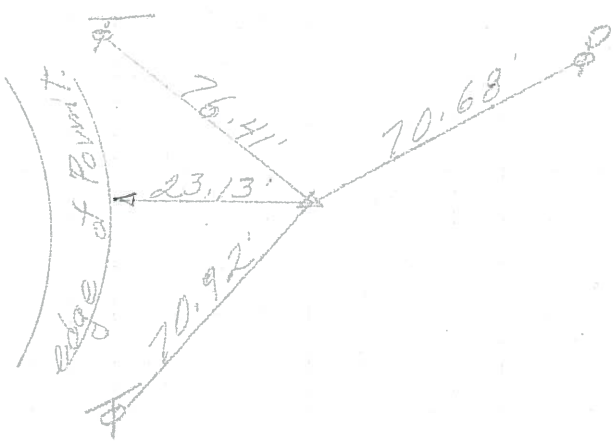
P.T.
63 + 90.85
P.K. Nail

61



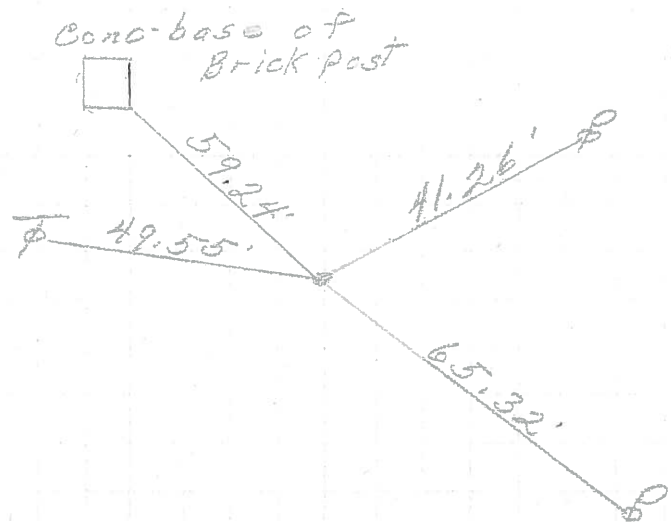
P.I.
61 + 87.28
 $\Delta = 33^\circ 34' Lt.$
Iron Pin

60



P.C.
59 + 71.27
P.K. Nail

59



PERSONNEL Schneider TITLE _____ PERSONNEL Potts TITLE _____ COUNTY Ottawa DATE Aug. 1968
Mosser _____ Barbour _____ S. R. 163 WEATHER _____
Redding _____ SEC. Oak Harbor - East TEMP. _____
 DESCRIPTION Ties for Control Points JOB NO. _____

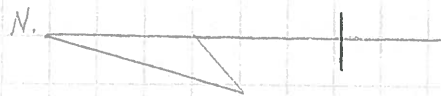
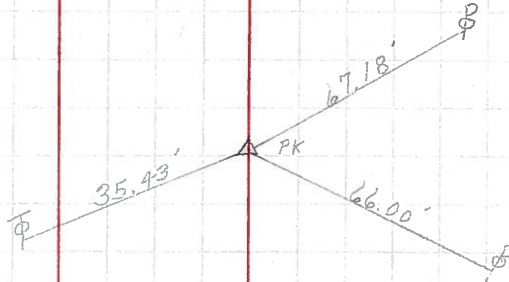
	LEFT	CENTER LINE	RIGHT
P.I. 65+90.27 P.K. Nail 6311	(62)		
P.T. 63+90.85 P.K. Nail 6310	(61)		
P.I. 61+87.28 $\Delta = 33^\circ 34' Lt.$ Iron Pin 6309	(60)		
P.C. 59+71.27 P.K. Nail 6308	(59)		

PERSONNEL	TITLE-	PERSONNEL	TITLE	COUNTY	DATE
Krabill				Ottawa	Feb. 19, 1964
Kowaleski				S. R. # <u>16-3</u>	WEATHER
Geyman				SEC. <u>E-2 (pt)</u>	TEMP.
Bruggeman					
DESCRIPTION	Oak Harbor Mt. Locations - East				JOB NO.
	LEFT	CENTER LINE	RIGHT		

55+78.78
 P.I. 4°-29' Lt
 P.K. Nail

(57)

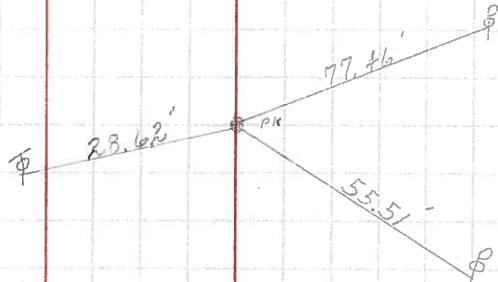
#4



56+90.81
 P.T.
 P.K. Nail

(58)

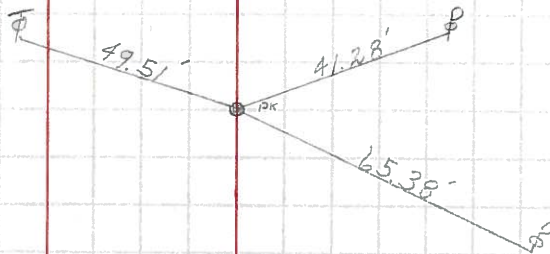
#5



59+71.27
 P.C.
 P.K. Nail

(59)

#6



61+87.28
 P.I. Δ=33°-34' Lt
 P.K. Nail over I. Pin.

(60)

#7

