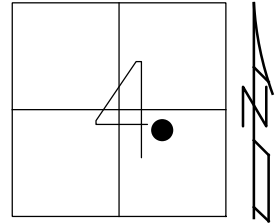


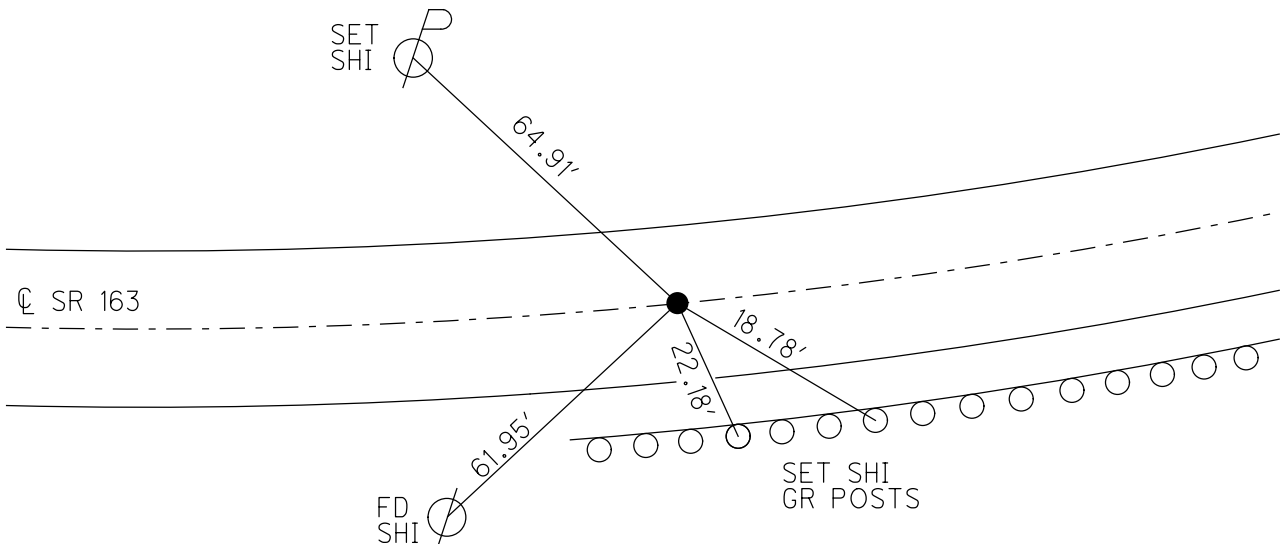
O.D.O.T. DISTRICT 2 SURVEY OFFICE (USE ONLY)

PERSONNEL _____ REFERENCE NO. 61 A SHEET 28 OF 74
 NOTES CORDES DATE 8-2-00 ROUTE SR 163
 H.C. ROUSOS WEATHER SUN/CLOUDS COUNTY OTTAWA
 R.C. KARGER TEMP. 85° TOWNSHIP SALEM
 DWG BY JAMES PID 95757 SECTION 4
 T 6 N R 15 E

TYPE MONUMENT P.K./WASHER
~~ON SURFACE~~ - BELOW 1"
 OFFSET CL PAVEMENT 2' ~~LT~~ : RT
9.4' TO RT EDGE PAVEMENT
 STATION: 789+62
 HORZ.DATUM: _____ GEOID: _____
 GRID: NORTHING: _____ EASTING: _____



RECORD:
 FD P.K./WASHER
 8-2-00, TMR
 SET P.K./WASHER
 12-5-00, SAH
 DNF
 5-4-16, DCH
 1-4-19, JLL



O.D.O.T. DISTRICT 2 SURVEY OFFICE

PERSONNEL _____

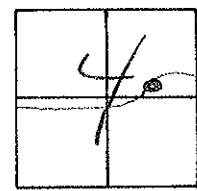
REFERENCE NO. 61-A SHEET 18 OF 63

NOTES Condcs
 H.C. Rousos
 R.C. Karger

DATE 8-2-00
 WEATHER Sun/Clouds
 TEMP. 85°

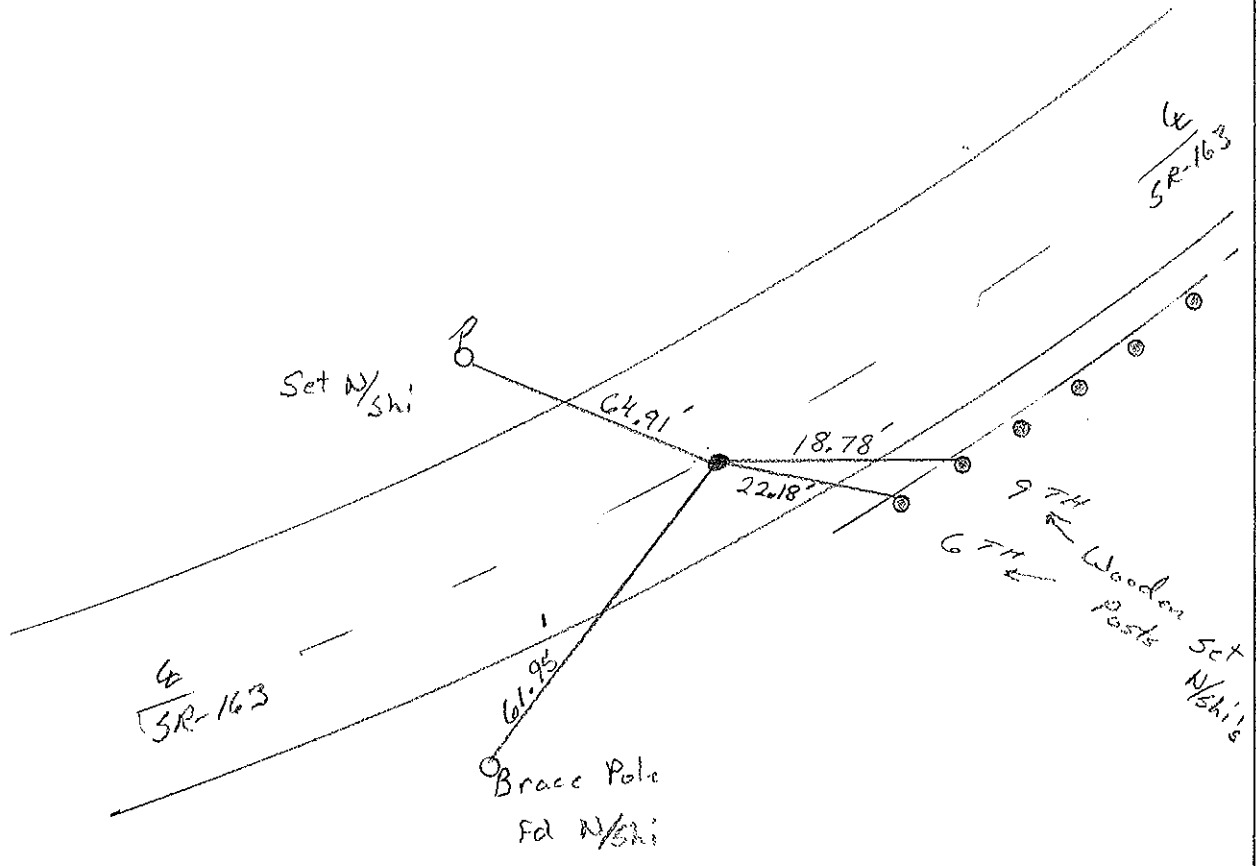
ROUTE 163
 COUNTY Ottawa
 TOWNSHIP Salem
 SECTION 4
 T. 6 N. R. 15 E.

TYPE MONUMENT PK/W
~~ON SURFACE~~ - (BELOW) 1" Below
~~LEFT~~ - (RIGHT) 2' Rt
94' TO Rt. EDGE PAVEMENT
 S.L.M. 789+62



*Record: const.
 PT. Sta 63+90.85*

*Set PK/W
 12-5-00
 SAH*



O.D.O.T. DISTRICT 2 SURVEY OFFICE

PERSONNEL

REFERENCE NO. 61

SHEET 12 OF

NOTES Ripple

H.C. BARBOUR

DATE 5-24-90

ROUTE 163

R.C. GLYMAN

WEATHER Cloudy

COUNTY OTTAWA

TEMP. 70°

TOWNSHIP SALEM

SECTION 4

T6 N R 15 E

TYPE MONUMENT Set P.K. Washer

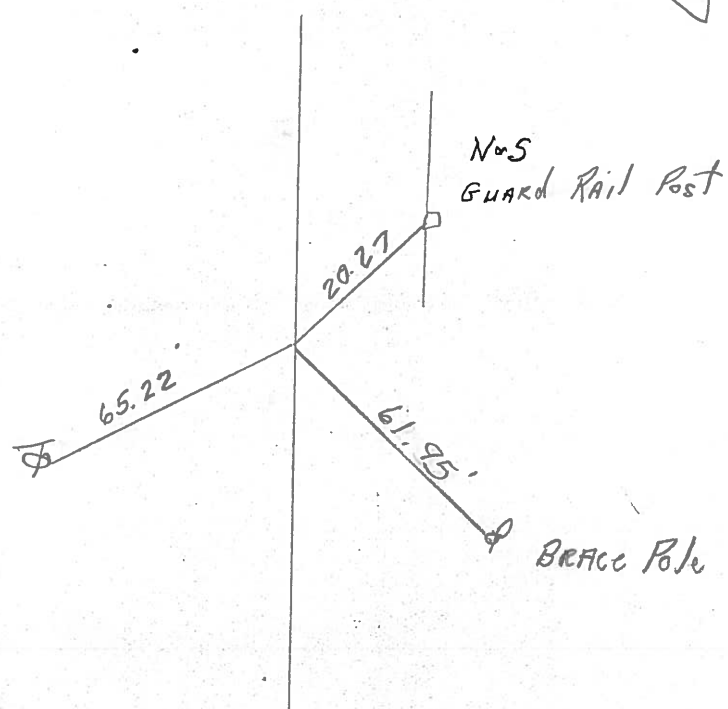
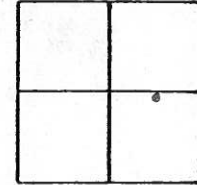
ON SURFACE - BELOW

LEFT- & PAV'T. - RIGHT 2' FT &

TO EDGE PAVEMENT

S.L.M. 63 + 90.85

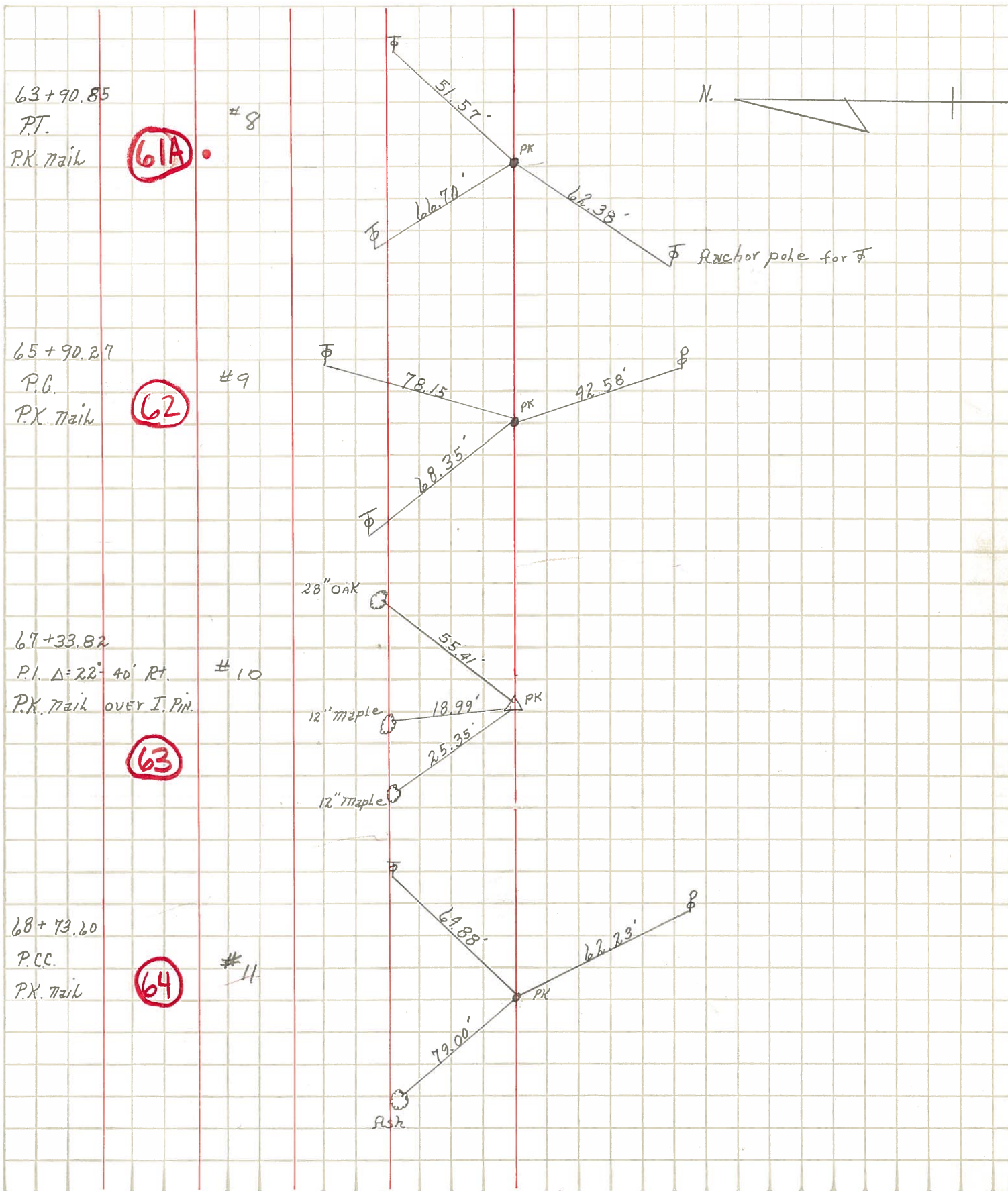
61A



P.T.

PERSONNEL	TITLE	PERSONNEL	TITLE	COUNTY	DATE
Krabill				Ottawa	Feb. 19, 1964
Kowaleski				S. R. #163	WEATHER
Geyman				SEC. E-2 (pt)	TEMP.
Bruggeman					

DESCRIPTION Oak Harbor Man Locations East JOB NO. _____



61A

62

63

64