

O.D.O.T. DISTRICT 2 SURVEY OFFICE (USE ONLY)

PERSONNEL

REFERENCE NO. 62

SHEET 29 OF 74

NOTES RHOADES

DATE 1-4-19

ROUTE SR 163

H.C. LEU

WEATHER SUNNY

COUNTY OTTAWA

R.C. MILLER

TEMP. 35°

TOWNSHIP SALEM

SECTION 4

DWG BY JAMES

PID 95757

T 6 N R 15 E

TYPE MONUMENT MAG/WASHER

ON SURFACE - ~~BELOW~~ ON

OFFSET 0.8' LT : ~~RT~~

10.7' TO LT EDGE PAVEMENT

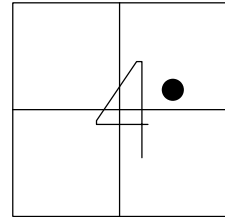
STATION: 791+62

HORZ. DATUM: NAD83 2011

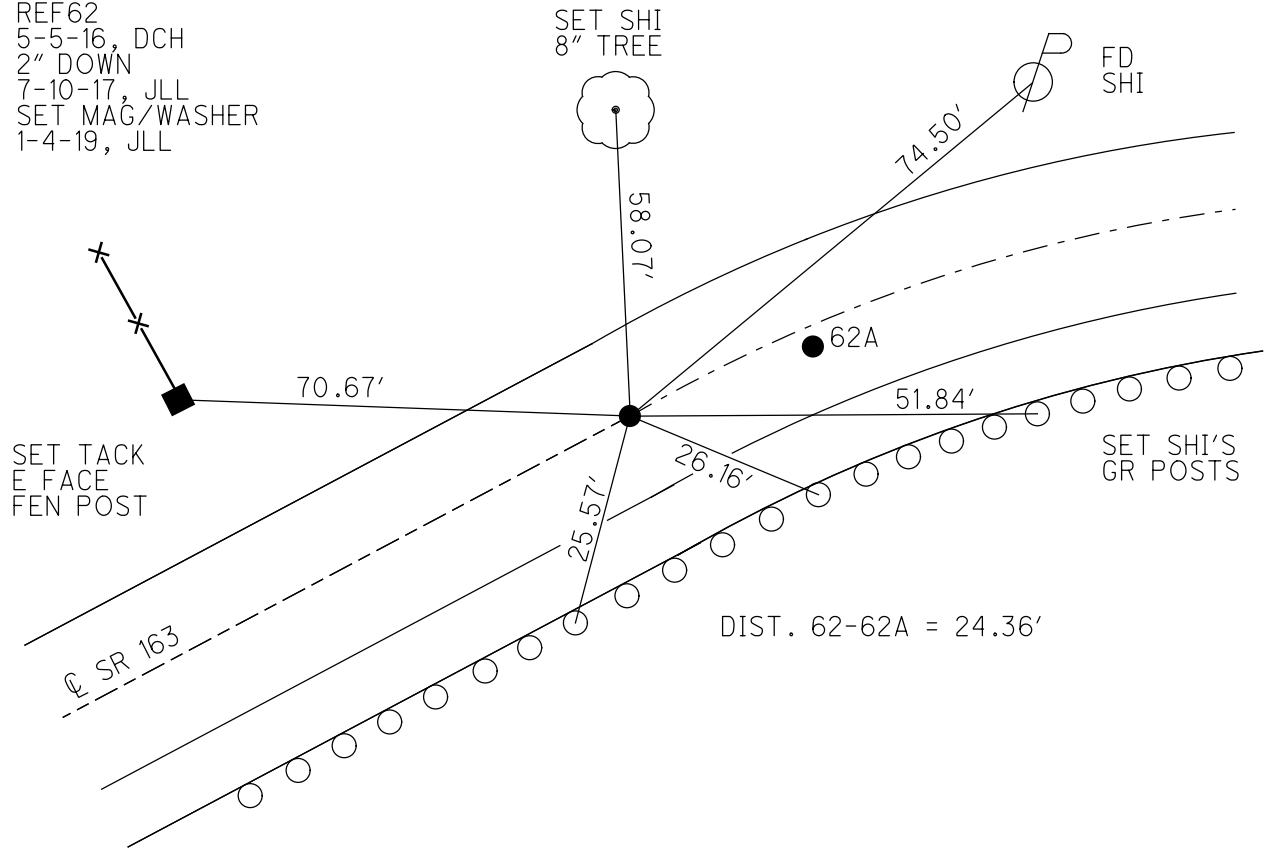
GEOID: NAVD88 2012A

GRID: NORTHING: 671608.883

EASTING: 1795670.015



RECORD: P.C.  
 STA 65+90.27  
 FD P.K./WASHER  
 8-2-00, TMR  
 SET P.K./WASHER  
 12-5-00, SAH  
 FD P.K./WASHER  
 REF62  
 5-5-16, DCH  
 2" DOWN  
 7-10-17, JLL  
 SET MAG/WASHER  
 1-4-19, JLL



# O.D.O.T. DISTRICT 2 SURVEY OFFICE

PERSONNEL \_\_\_\_\_

REFERENCE NO. 62

SHEET 19 OF 63

NOTES Cordes

H.C. Rousos

R.C. Nargev

DATE 8-12-00

WEATHER Sun.

TEMP. 83°F

ROUTE S.R. 163

COUNTY OTTAWA

TOWNSHIP SALEM

SECTION 4

T 6 N R 15 E

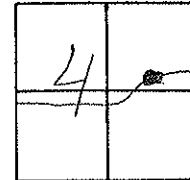
TYPE MONUMENT PK/w

ON SURFACE - ~~BELOW~~ Surface

LEFT ~~PAV~~ RIGHT 8 ft

10.7 TO Lt. EDGE PAVEMENT

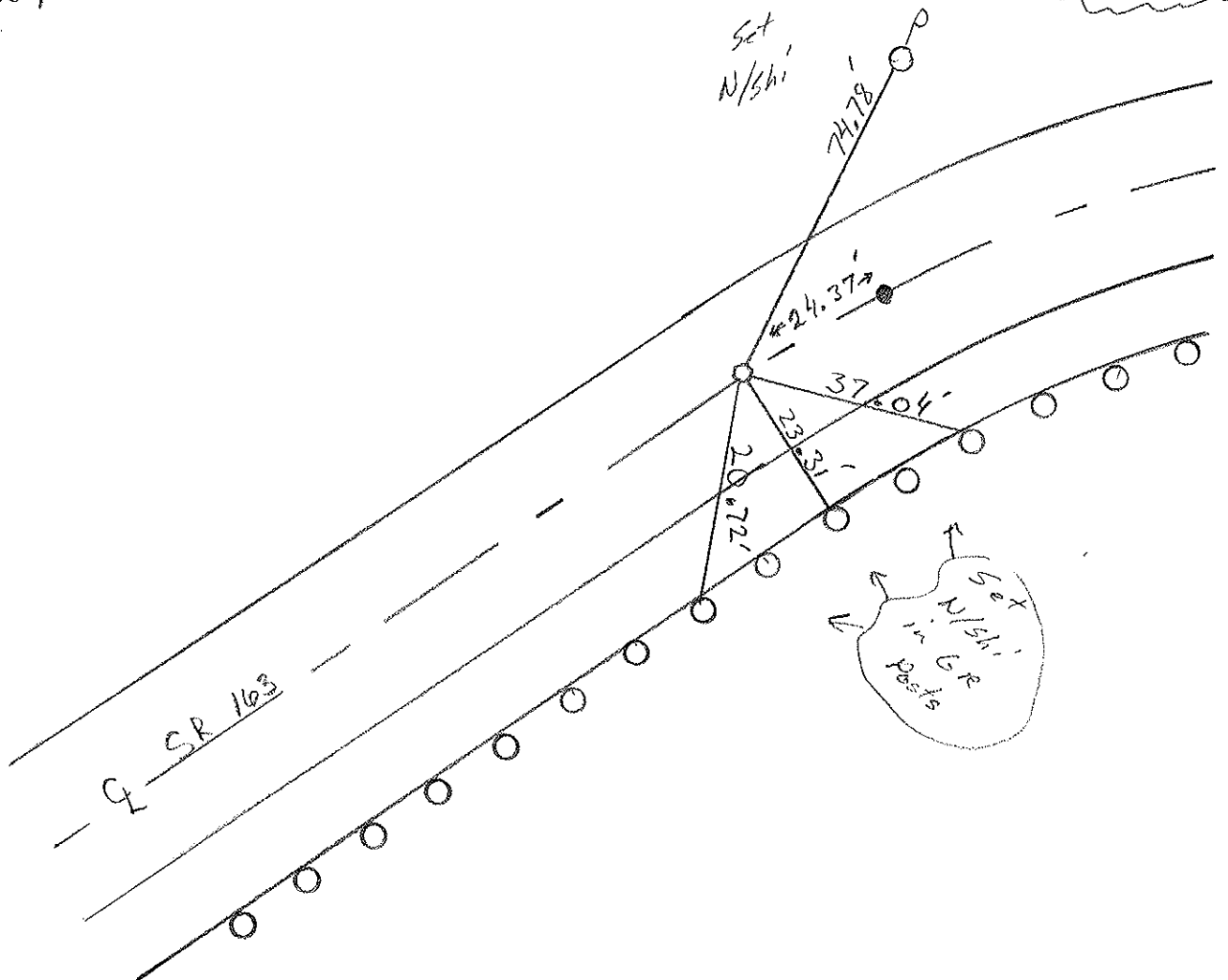
S.L.M. 791+62



Record: Sta 65+90.27

P.C.  
CONST

Set PK/w  
12-5-00  
SAH



# O.D.O.T. DISTRICT 2 SURVEY OFFICE

PERSONNEL \_\_\_\_\_

REFERENCE NO. 62

SHEET 13 OF \_\_\_\_\_

NOTES Ripple

H.C. BARBOUR

R.C. GeYMAN

DATE 5-24-90

WEATHER Cloudy

TEMP. 72°

ROUTE 163

COUNTY OTTAWA

TOWNSHIP Salem

SECTION 4

T 6 N R 15 E

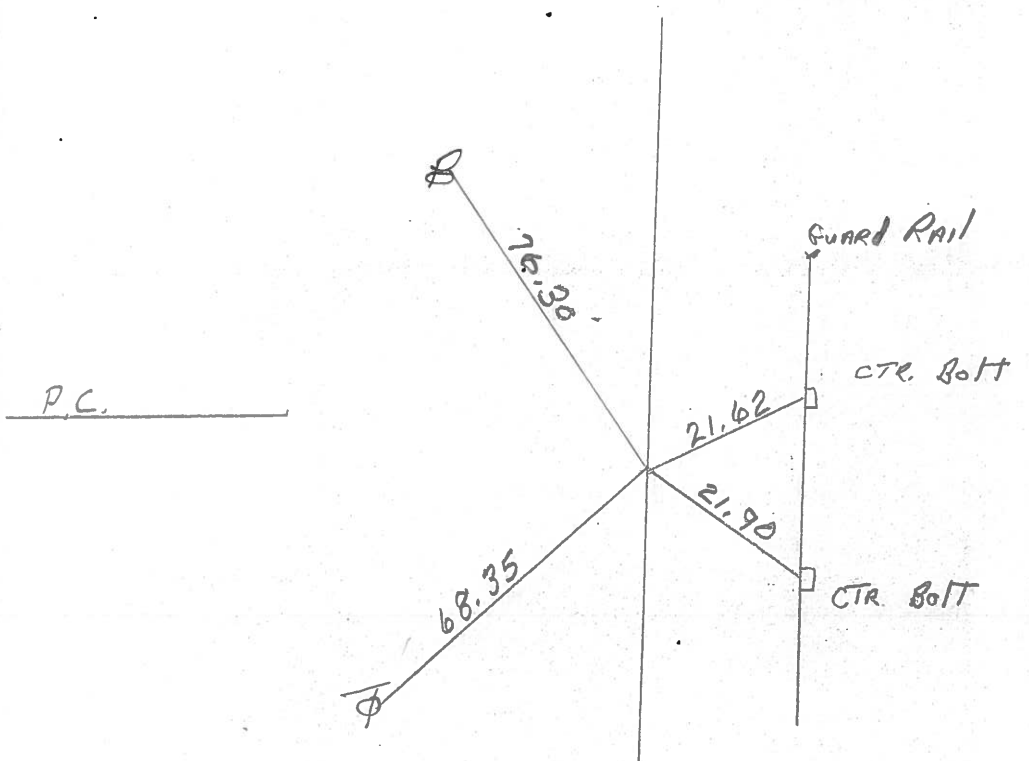
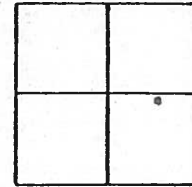
TYPE MONUMENT <sup>set</sup> P.K. - Washer

ON SURFACE - BELOW \_\_\_\_\_

LEFT - & PAV'T. - RIGHT \_\_\_\_\_

\_\_\_\_\_ TO \_\_\_\_\_ EDGE PAVEMENT

S.L.M. 65 + 90.27



PERSONNEL TITLE PERSONNEL TITLE

COUNTY Ottawa DATE March 1970

S. R. 163 WEATHER \_\_\_\_\_

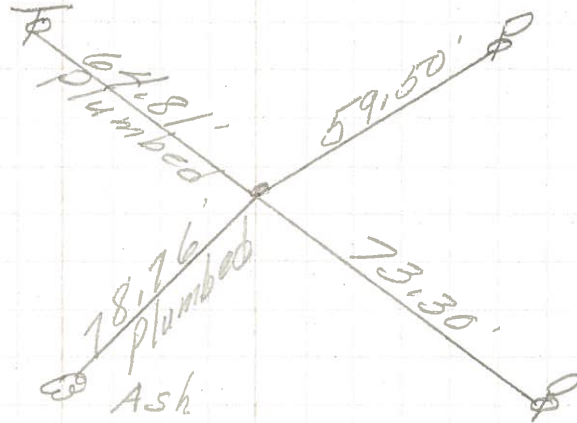
SEC. Oak Harbor-East TEMP. \_\_\_\_\_

DESCRIPTION Sec-4 Salem Twp. JOB NO. \_\_\_\_\_

LEFT CENTER LINE RIGHT

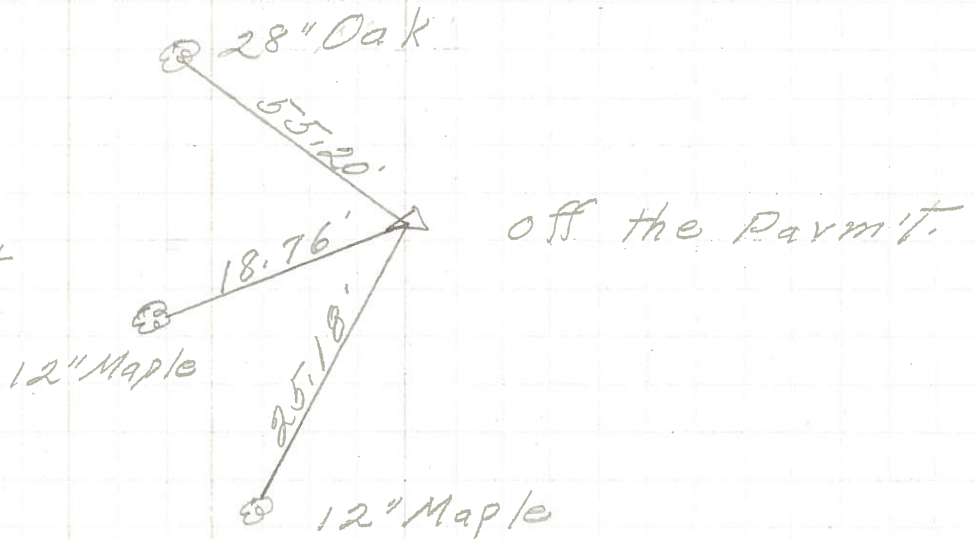
P.C.C.  
68+73.60  
P.K. Nail

(64)



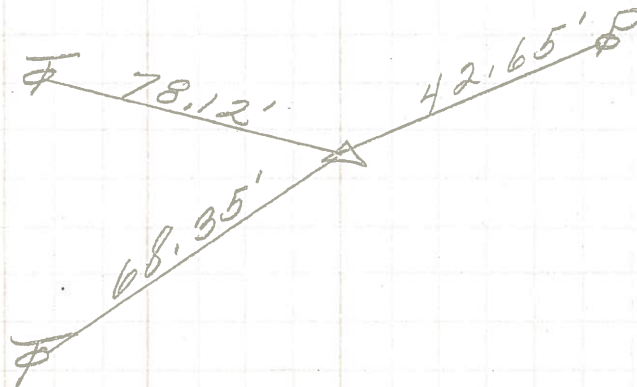
P.I.  
67+33.82  
 $\Delta = 22^\circ 40' \text{ Rt.}$   
Iron Pin

(63)

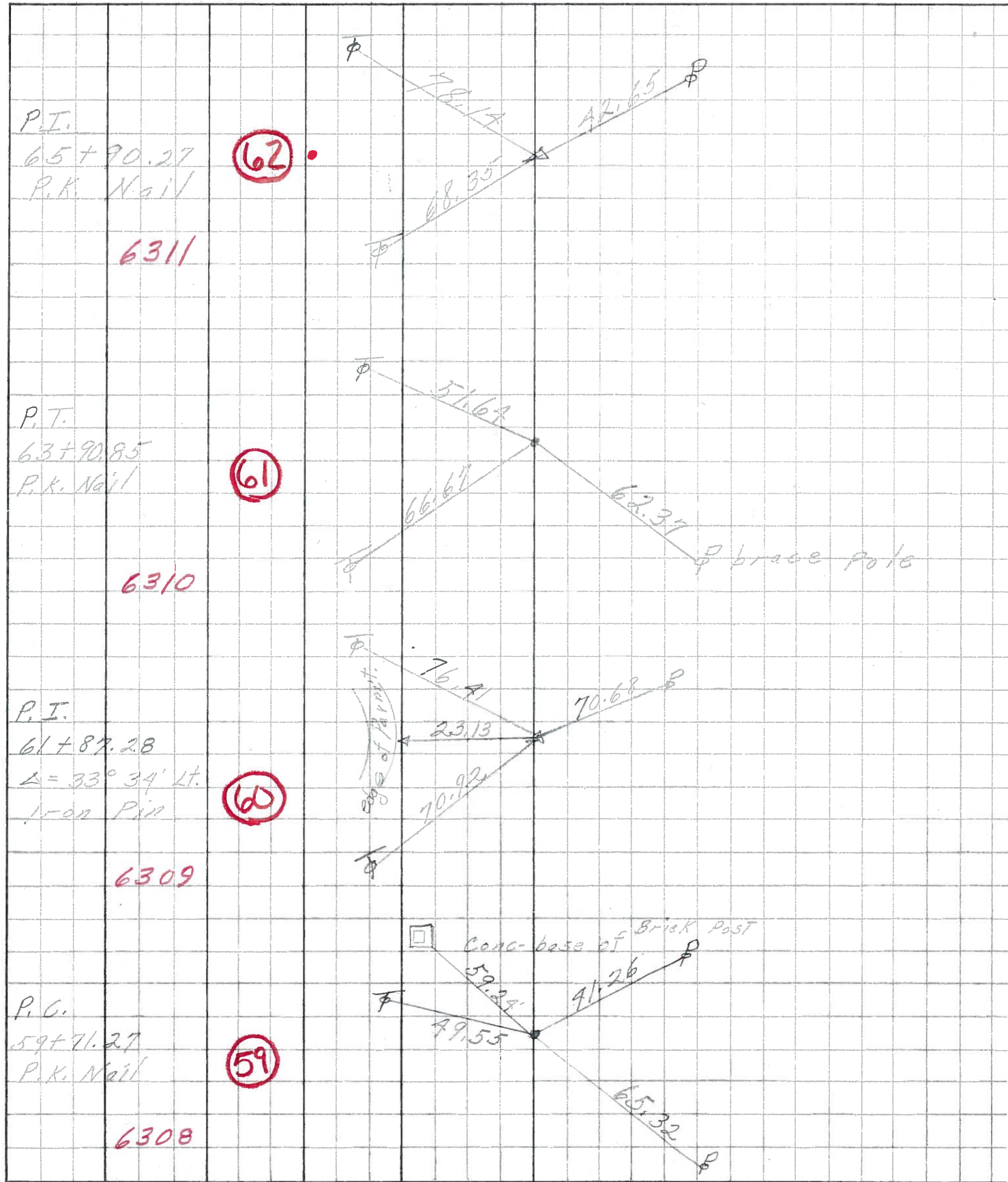


P.I.  
65+90.27  
P.K. Nail

(62)

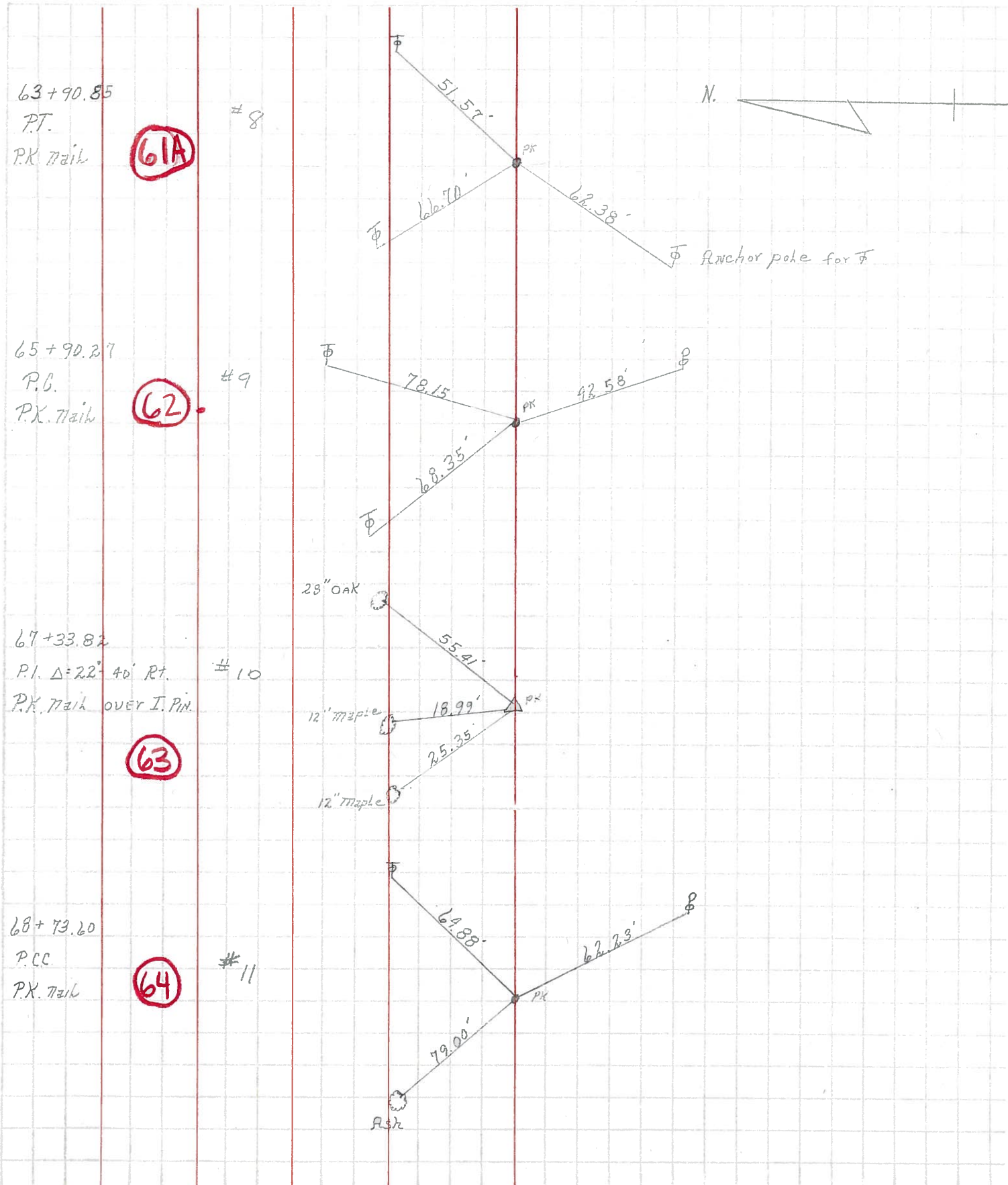


|                  |                                |              |       |                               |                  |
|------------------|--------------------------------|--------------|-------|-------------------------------|------------------|
| PERSONNEL        | TITLE                          | PERSONNEL    | TITLE | COUNTY                        | DATE             |
| <u>Schneider</u> |                                | <u>Potts</u> |       | <u>Ottawa</u>                 | <u>Aug. 1968</u> |
| <u>Mosser</u>    |                                |              |       | S. R. <u>163</u>              | WEATHER          |
| <u>Barbour</u>   |                                |              |       | SEC. <u>Sak Harbor - East</u> | TEMP.            |
| <u>Redding</u>   |                                |              |       |                               |                  |
| DESCRIPTION      | <u>Ties for Control Points</u> |              |       |                               | JOB NO.          |
|                  | LEFT                           | CENTER LINE  | RIGHT |                               |                  |



| PERSONNEL | TITLE | PERSONNEL | TITLE | COUNTY        | DATE          | WEATHER | TEMP. |
|-----------|-------|-----------|-------|---------------|---------------|---------|-------|
| Krabill   |       |           |       | Ottawa        | Feb. 19, 1964 |         |       |
| Xowaleski |       |           |       | S. R. #163    |               |         |       |
| Geyman    |       |           |       | SEC. E-2 (pt) |               |         |       |
| Bruggeman |       |           |       |               |               |         |       |

DESCRIPTION Oak Harbor Mott Locations East JOB NO. \_\_\_\_\_



61A

62

63

64