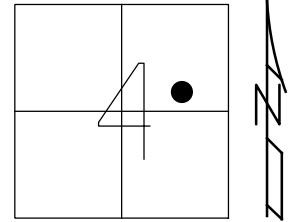


O.D.O.T. DISTRICT 2 SURVEY OFFICE (USE ONLY)

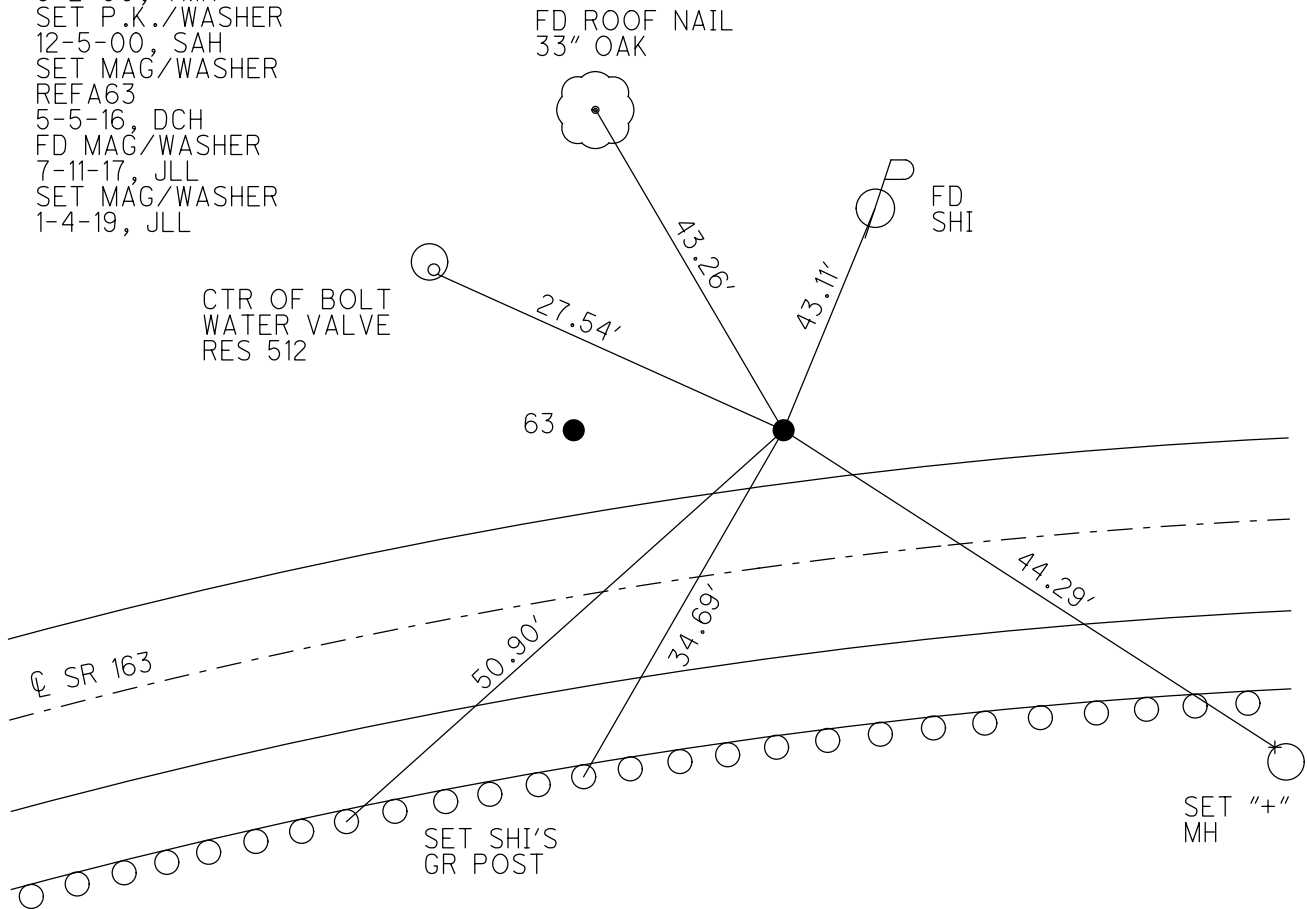
PERSONNEL _____ REFERENCE NO. 63 A SHEET 32 OF 74
 NOTES RHOADES DATE 1-4-19 ROUTE SR 163
 H.C. LEU WEATHER SUNNY COUNTY OTTAWA
 R.C. MILLER TEMP. 38° TOWNSHIP SALEM
 _____ SECTION 4
 DWG BY JAMES PID 95757 T 6 N R 14 E

TYPE MONUMENT MAG/WASHER
 ON SURFACE - ~~BELOW~~ ON
 OFFSET Q PAVEMENT _____ LT : ~~RT~~
3.0' TO LT EDGE PAVEMENT
 STATION: 793+31



HORZ. DATUM: NAD83 2011 GEOID: NAVD88 2012A
 GRID: NORTHING: 671703.884 EASTING: 1795804.797

RECORD: P.I.
 STA 67+59.08
 FD 4" LONG BOAT SPIKE
 8-2-00, TMR
 SET P.K./WASHER
 12-5-00, SAH
 SET MAG/WASHER
 REFA63
 5-5-16, DCH
 FD MAG/WASHER
 7-11-17, JLL
 SET MAG/WASHER
 1-4-19, JLL



DIST. 63-63A = 21.84'

O.D.O.T. DISTRICT 2 SURVEY OFFICE

PERSONNEL

NOTES Condos
 H.C. Rousos
 R.C. Karger

REFERENCE NO. 63-A

DATE 8-2-00
 WEATHER Fair
 TEMP. 85°F

SHEET 22 OF 63

ROUTE 163
 COUNTY Ottawa
 TOWNSHIP Salem
 SECTION 4
 T 6 N 15 E

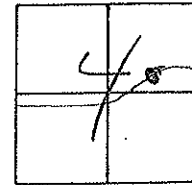
TYPE MONUMENT 4" long Brass Spike (Paved Berm)

ON SURFACE - ~~BELOW~~

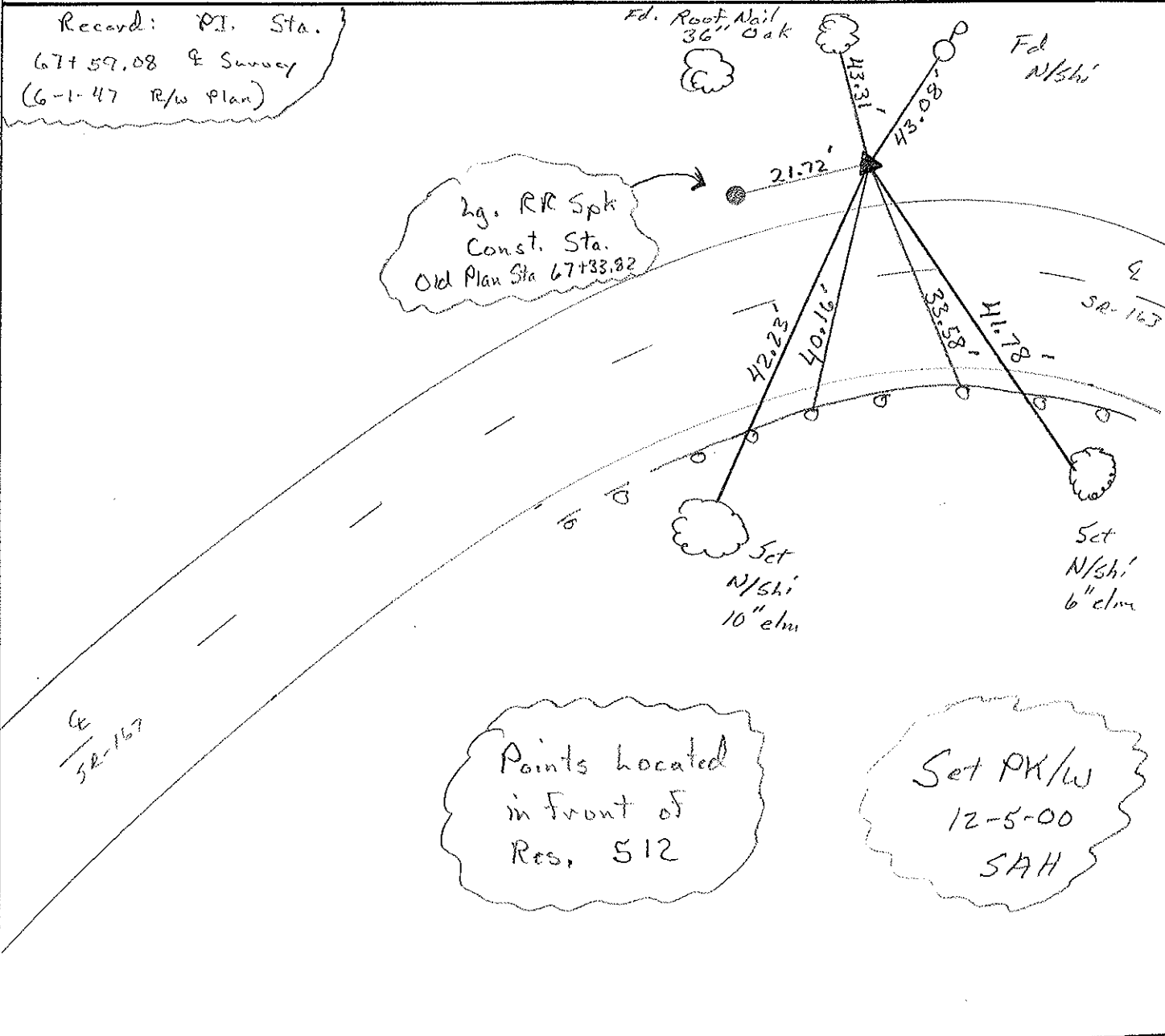
LEFT - ~~RIGHT~~

2.2' Rt TO Lt EDGE PAVEMENT

S.L.M. 793 + 31



Record: P.I. Sta.
 67+59.08 & Survey
 (6-1-47 R/W Plan)



O.D.O.T. DISTRICT 2 SURVEY OFFICE

PERSONNEL _____

REFERENCE NO. _____

SHEET 5 OF 5

NOTES CHEHEY

H.C. RIPPLE

R.G. BARBOUR

GEYMAN

DATE 11-23-1992

WEATHER CLOUDY

TEMP. 40°

ROUTE 163

COUNTY OTAWA

TOWNSHIP SALEM

SECTION 4

T6 NR 15 E

TYPE MONUMENT ^(4" LONG) BOAT SPIKE (IN PAVED BERM)

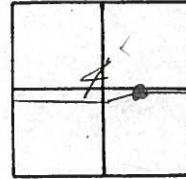
ON SURFACE - ~~BELOW~~ _____

LEFT - ~~€~~ PAV'T. - ~~RIGHT~~ _____

2.2' RT. TO LT. EDGE PAVEMENT

S.L.M. _____

63A



P.I. STA. 67+59.08 E. SURVEY (6-1-1947 R/W. PLAN)

