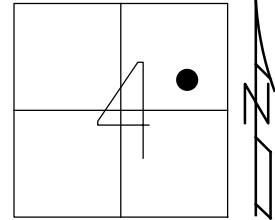


O.D.O.T. DISTRICT 2 SURVEY OFFICE (USE ONLY)

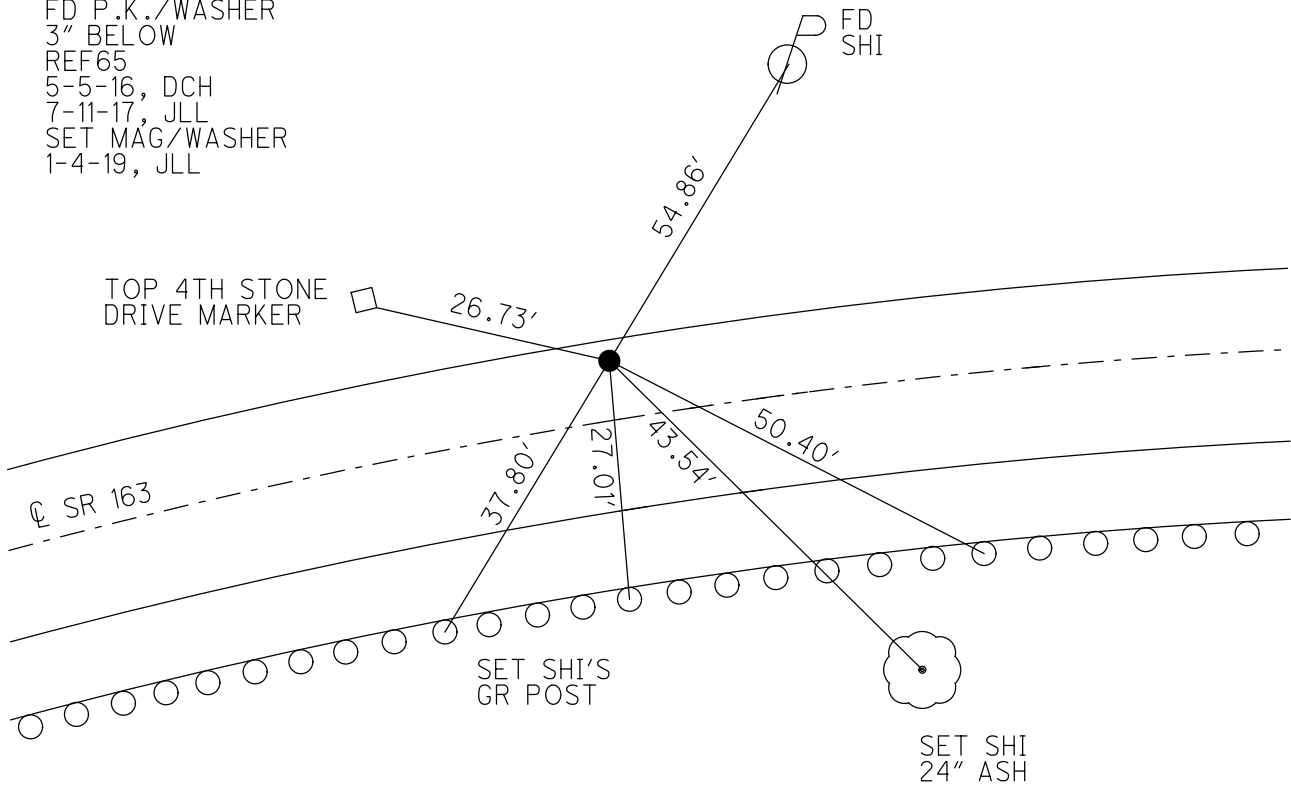
PERSONNEL	REFERENCE NO. <u>65</u>	SHEET <u>34</u> OF <u>74</u>
NOTES <u>RHOADES</u>	DATE <u>1-4-19</u>	ROUTE <u>SR 163</u>
H.C. <u>LEU</u>	WEATHER <u>SUNNY</u>	COUNTY <u>OTTAWA</u>
R.C. <u>MILLER</u>	TEMP. <u>38°</u>	TOWNSHIP <u>SALEM</u>
		SECTION <u>4</u>
DWG BY <u>JAMES</u>	PID <u>95757</u>	T <u>6</u> N R <u>15</u> E

TYPE MONUMENT MAG/WASHER
 ON SURFACE - ~~BELOW~~ ON
 OFFSET ☉ PAVEMENT 7.8' LT : ~~RT~~
2.0' TO LT EDGE PAVEMENT
 STATION: 795+86

HORZ.DATUM: NAD83 2011 GEOID: NAVD88 2012A
 GRID: NORTHING: 671764.656 EASTING: 1796056.959



RECORD: P.I.
 STA 70+10.98
 FD P.K./WASHER
 8-2-00, TMR
 SET P.K./WASHER
 12-5-00, SAH
 FD P.K./WASHER
 3" BELOW
 REF65
 5-5-16, DCH
 7-11-17, JLL
 SET MAG/WASHER
 1-4-19, JLL



O.D.O.T. DISTRICT 2 SURVEY OFFICE

PERSONNEL _____

REFERENCE NO. 65

SHEET 24 OF 63

NOTES Conds

H.C. Rousos

R.C. Karger

DATE 8-2-00

WEATHER Sunny

TEMP. 85°F

ROUTE 163

COUNTY Ottawa

TOWNSHIP Salem

SECTION 4

T 6 N R 15 E

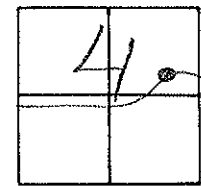
TYPE MONUMENT PK/W

ON SURFACE ~~BELOW~~

LEFT ~~C/PAVT~~ RIGHT 7.4' LT

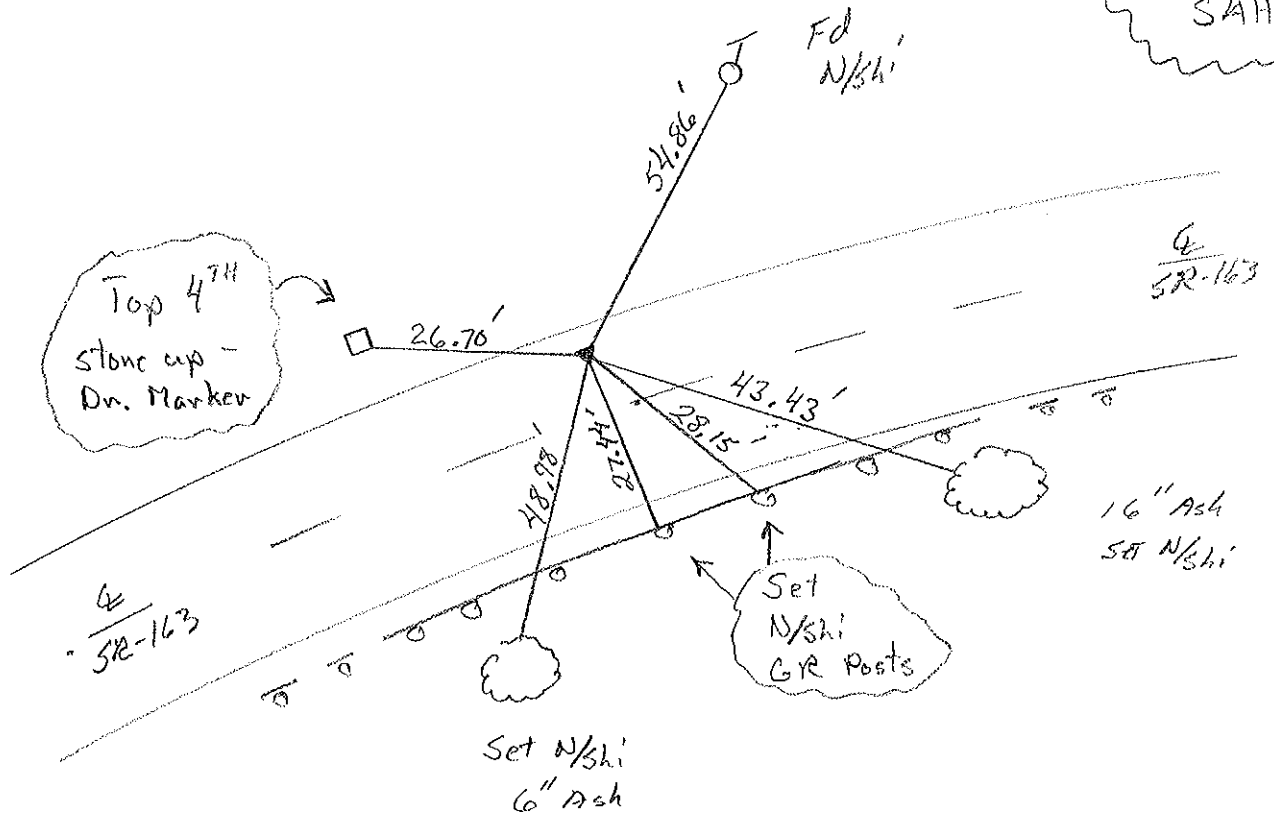
3.6' TO LT. EDGE PAVEMENT

S.L.M. 795+86



Record: PI
Sta 70+10.98
CONST.

Set PK/W
12-5-00
SAH



Top 4TH
Stone cup -
Dr. Marker

Set
N/shi
GR Posts

Set N/shi
6" Ash

Point in front
of Res. 536

O.D.O.T. DISTRICT 2 SURVEY OFFICE

PERSONNEL

REFERENCE NO. 65

SHEET 16 OF

NOTES Ripple

H.C. Barbour

R.C. Geyman

DATE 5-24-90

WEATHER Cloudy

TEMP. 72°

ROUTE 163

COUNTY OTTAWA

TOWNSHIP Salem

SECTION 4

T 6 N R 15 E

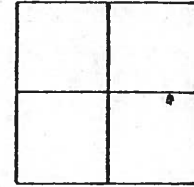
TYPE MONUMENT Set PK + Washer

ON SURFACE - BELOW

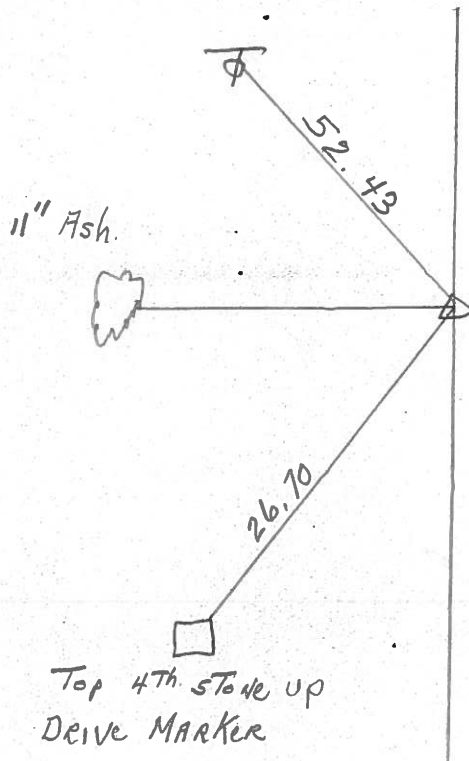
LEFT - & PAV'T. - RIGHT 7.4' LT. & PAV'T.

 TO EDGE PAVEMENT

S.L.M. 70 + 10.98



P.I.



PERSONNEL TITLE PERSONNEL TITLE

COUNTY Ottawa DATE March 1970

S. R. 163 WEATHER _____

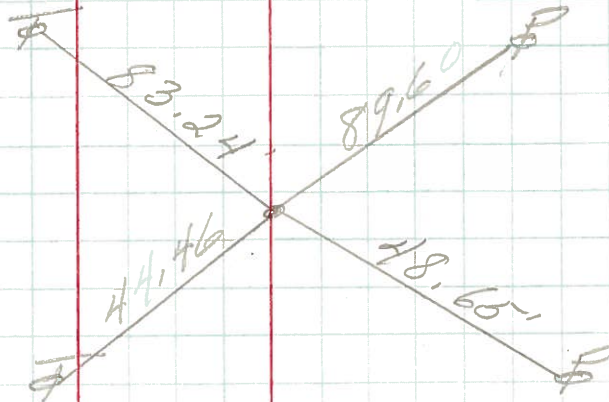
SEC. Oak Harbor-East TEMP. _____

DESCRIPTION Sec-4 Salem Twp. JOB NO. _____

LEFT CENTER LINE RIGHT

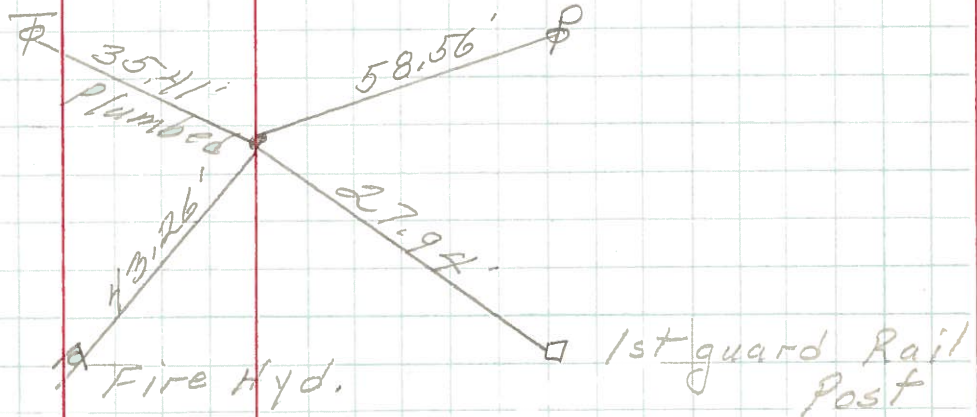
P.C.
73 + 80.29
P.K. Nail

67



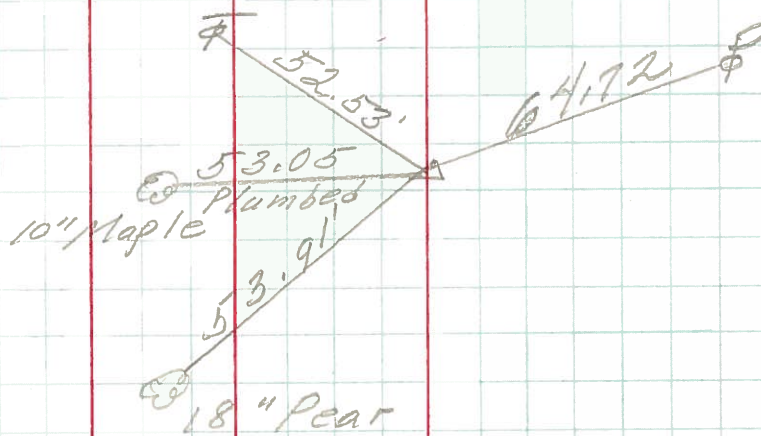
P.T.
71 + 47.30
P.K. Nail

66

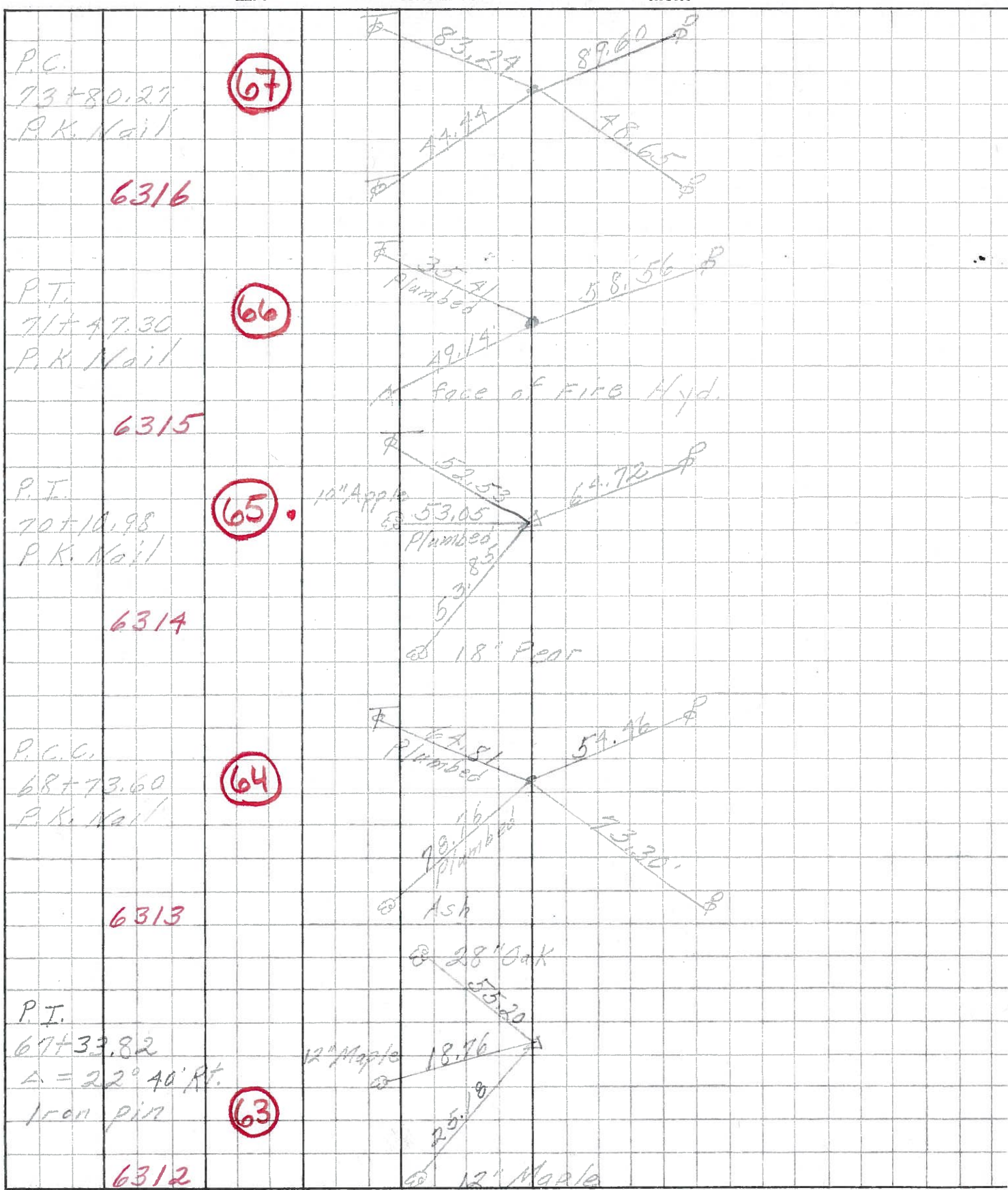


P.I.
70 + 10.98
P.K. Nail

65



PERSONNEL	TITLE	PERSONNEL	TITLE	COUNTY	DATE
Schneider		Potts		Ottawa	Aug, 1960
Mosser				S. R. 163	WEATHER
Barbour				SEC. Oak Harbor-East	TEMP.
Redding					
DESCRIPTION	Ties for Control Points				JOB NO.



PERSONNEL TITLE PERSONNEL TITLE

COUNTY Ottawa DATE Feb. 19, 1964

Krabihh

Xowaleski

S. R. #163

WEATHER

Geyman

SEC. E2 (pt)

TEMP.

Bruggen 7277

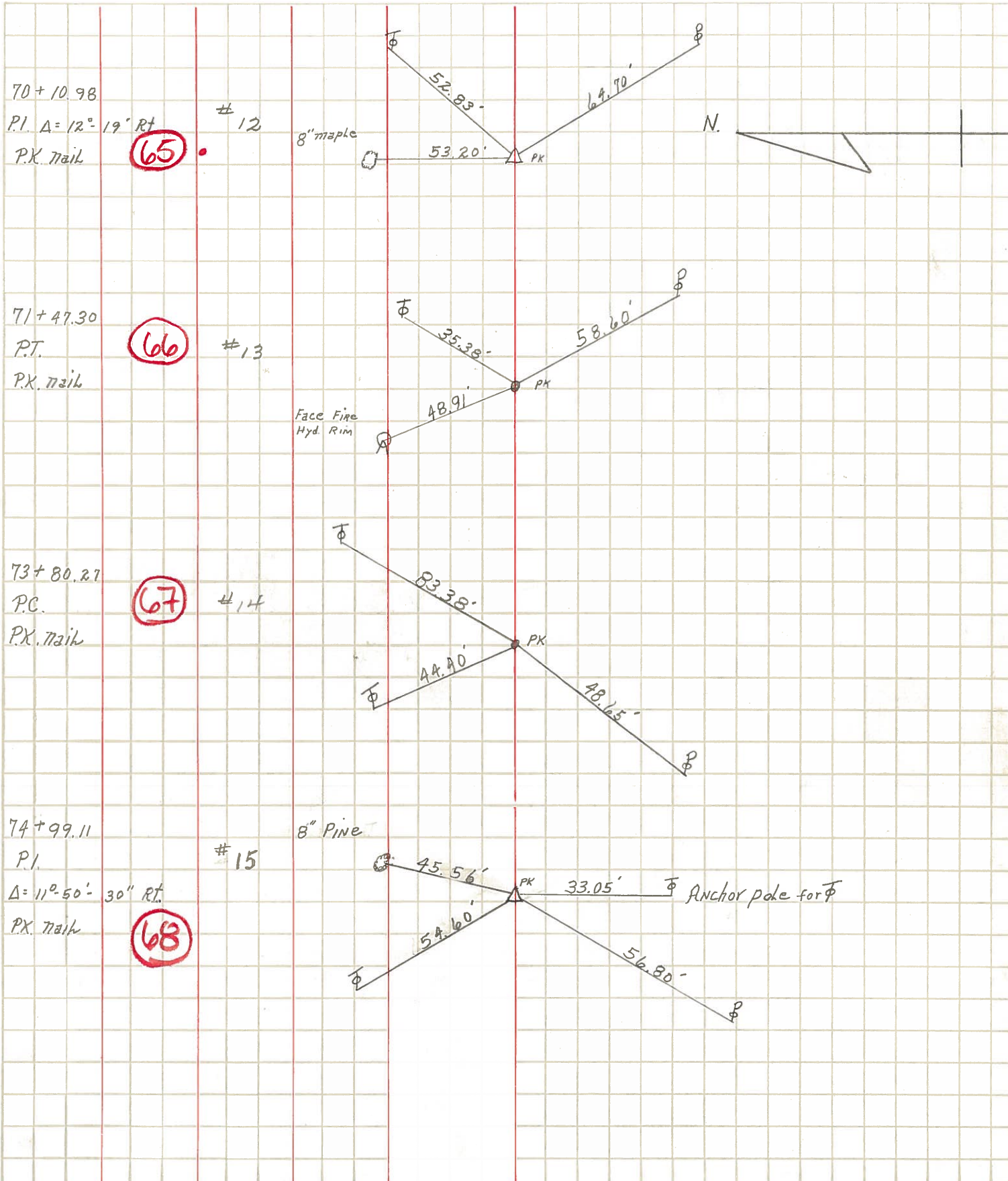
DESCRIPTION Oak Harbor 77077 Locations East

JOB NO.

LEFT

CENTER LINE

RIGHT



70+10.98

P.I. Δ = 12°-19' Rt

P.K. Nail

#12

(65)

8" maple

53.20'

52.83°

64.70'

N.

71+47.30

P.T.

P.K. Nail

#13

(66)

Face Fire Hyd. Rim

48.91'

35.38°

58.60'

73+80.27

P.C.

P.K. Nail

#14

(67)

44.90'

83.38°

48.15'

74+99.11

P.I.

Δ = 11°-50'-30" Rt

P.K. Nail

#15

(68)

8" Pine

45.56'

54.60°

33.05'

56.80'

Anchor pole for P