

O.D.O.T. DISTRICT 2 SURVEY OFFICE (USE ONLY)

PERSONNEL

REFERENCE NO. 66

SHEET 35 OF 74

NOTES POORE

DATE 7-10-17

ROUTE SR 163

H.C. LEU

WEATHER RAINY

COUNTY OTTAWA

R.C. CARSON

TEMP. 70°

TOWNSHIP SALEM

DWG BY JAMES PID 95757

SECTION 4

T 6 N R 15 E

TYPE MONUMENT P.K./WASHER

ON SURFACE - ~~BELOW~~ ON

OFFSET \varnothing PAVEMENT ON LT : RT

11.7' TO RT EDGE PAVEMENT

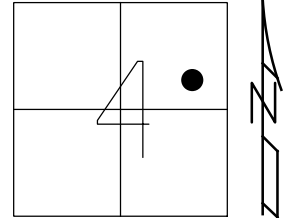
STATION: 797+23

HORZ.DATUM: NAD83 2011

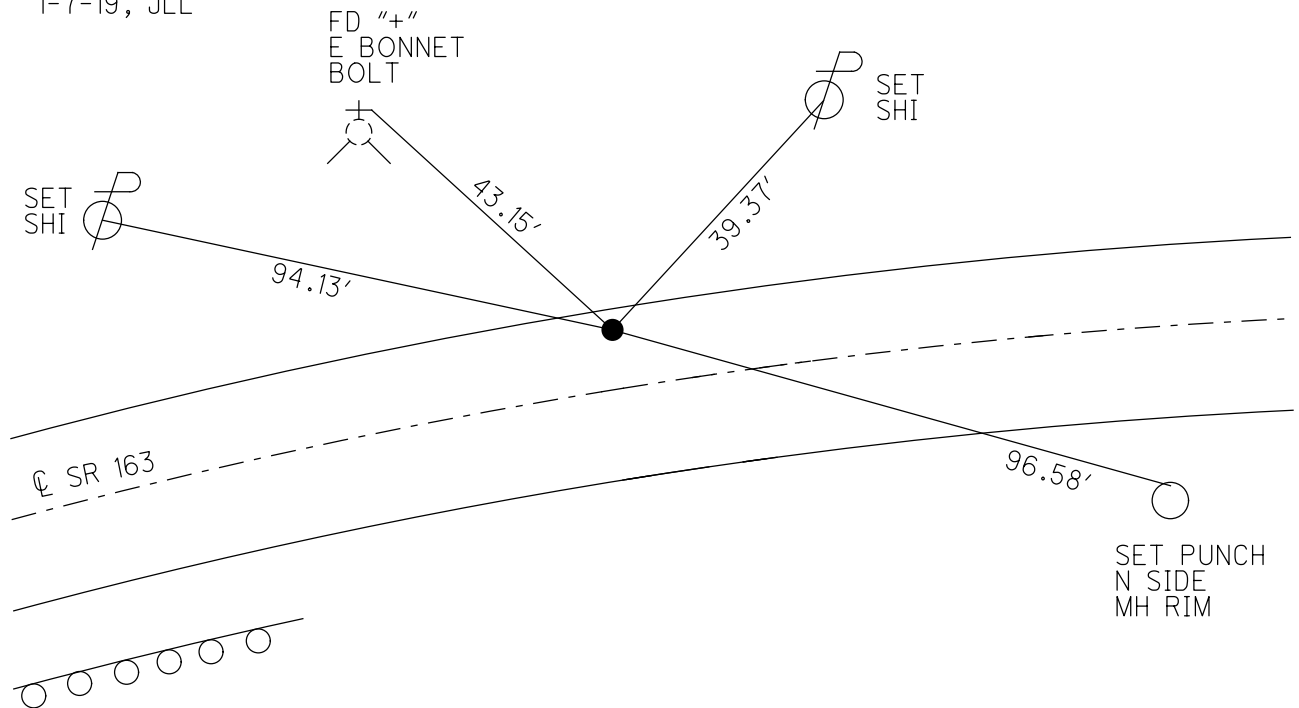
GEOID: NAVD88 2012A

GRID: NORTHING: 671769.600

EASTING: 1796194.009



RECORD: P.T.
 STA 71+47.30
 FD P.K./WASHER
 8-7-00, TMR
 SET P.K./WASHER
 12-5-00, SAH
 FD P.K./WASHER
 REF66
 5-5-16, DCH
 7-10-17, JLL
 SET MAG/WASHER
 1-7-19, JLL



O.D.O.T. DISTRICT 2 SURVEY OFFICE

PERSONNEL

NOTES Cordos
 H.C. Rousos
 R.C. Karger

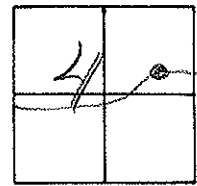
REFERENCE NO. 66

DATE 8-7-00
 WEATHER Fair
 TEMP. +85° F

SHEET 25 OF 63

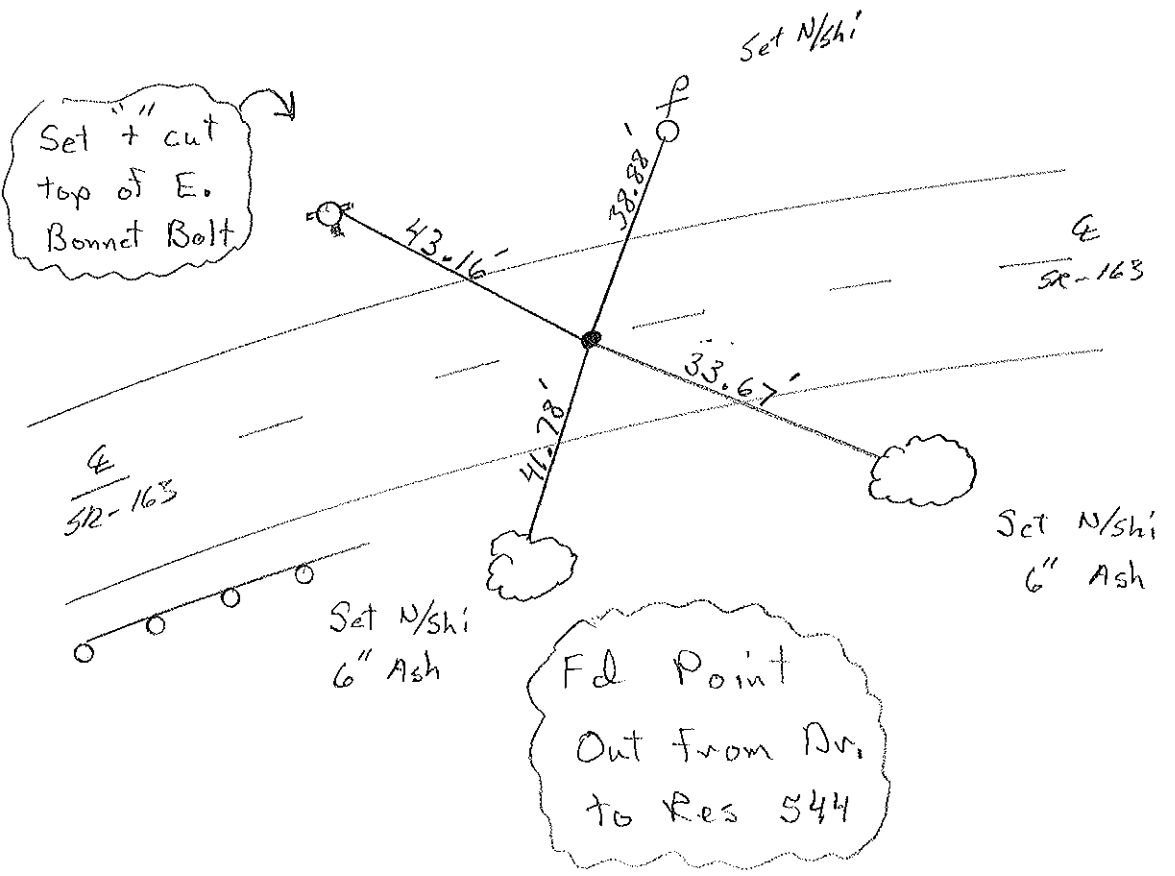
ROUTE 163
 COUNTY Ottawa
 TOWNSHIP Salem
 SECTION 4
 T 6 N R 15 E

TYPE MONUMENT PK W
~~ON SURFACE~~ - ~~BELOW~~ Surface
~~LEFT - (E) PAV'T - RIGHT~~ E
11.7' TO RT EDGE PAVEMENT
 S.L.M. 797+23



Record: PT
 Rec: Sta - 71+47.30
 Const.

Set PK/W
 12-5-00
 SAH



O.D.O.T. DISTRICT 2 SURVEY OFFICE

PERSONNEL

REFERENCE NO. 66

SHEET 17 OF

NOTES Ripple

H.C. BARBOUR

DATE 5-24-90

ROUTE 163

R.C. Geyman

WEATHER Cloudy

COUNTY OTTAWA

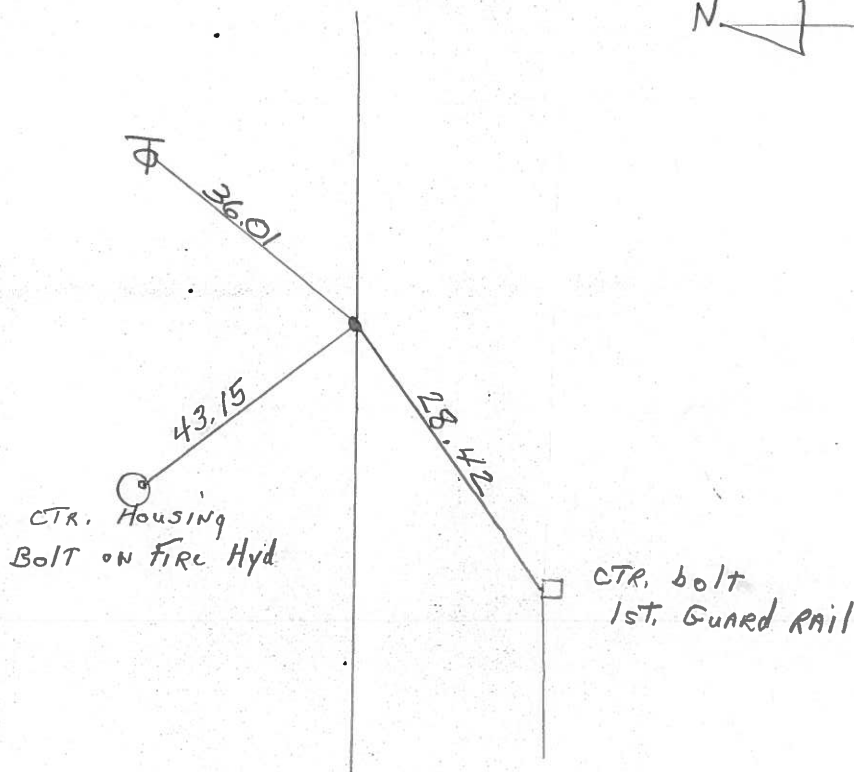
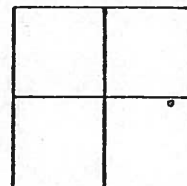
TEMP. 72°

TOWNSHIP Salem

SECTION 4

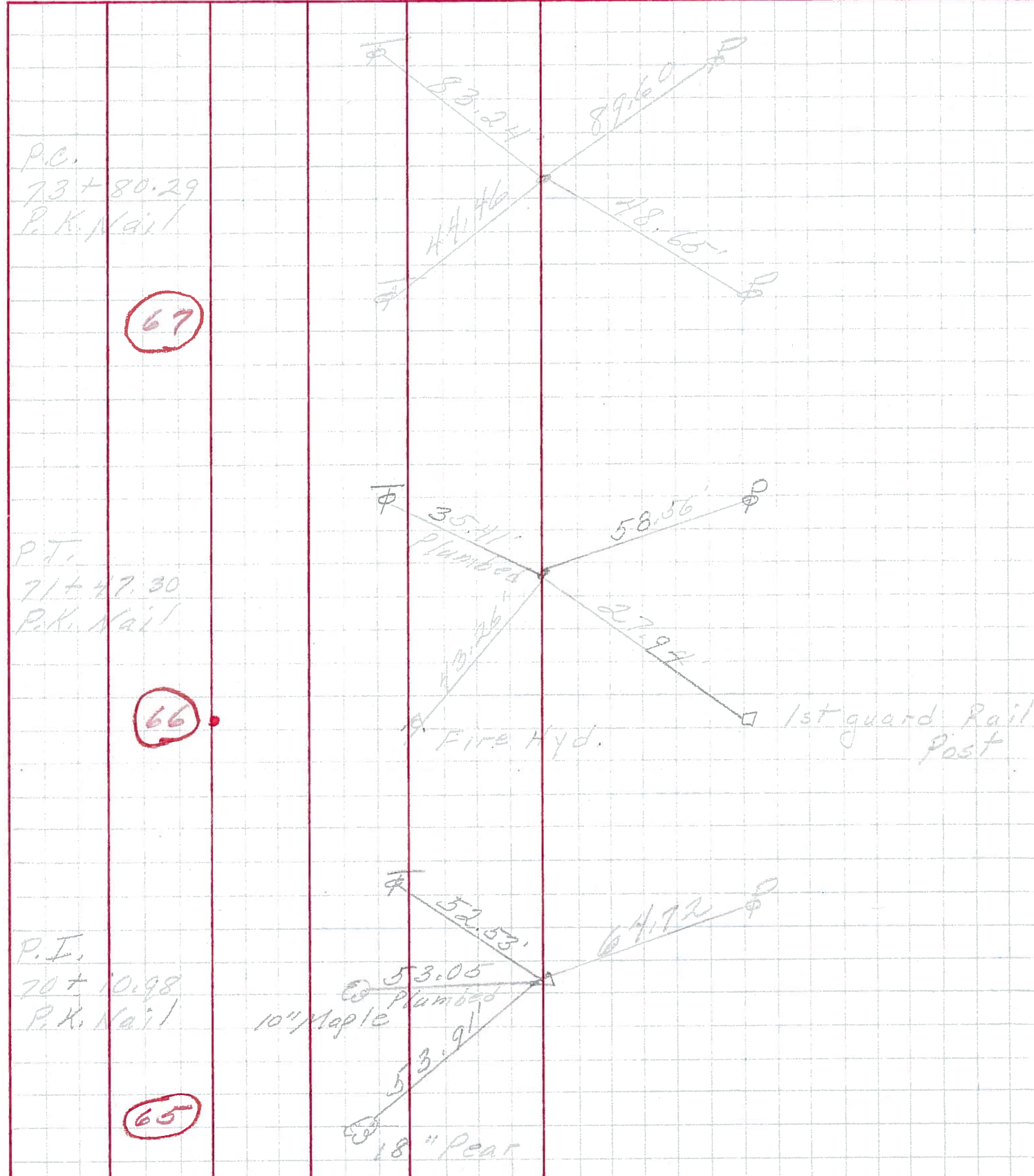
T 6 N R 15 E

TYPE MONUMENT set P.K. + Washer
ON SURFACE - BELOW Headless P.K. 3" down
LEFT - ☉ PAV'T. - RIGHT
 TO EDGE PAVEMENT
S.L.M. 71 + 47.30



P.T.

PERSONNEL	TITLE	PERSONNEL	TITLE	COUNTY	DATE
				<u>Ottawa</u>	<u>March 1970</u>
				S. R. <u>163</u>	WEATHER
				SEC. <u>Oak Harbor-East</u>	TEMP.
DESCRIPTION	<u>Sec-4 Salem TWP.</u>			JOB NO.	
	LEFT	CENTER LINE	RIGHT		



P.C.
73 + 80.29
P.K. Nail

67

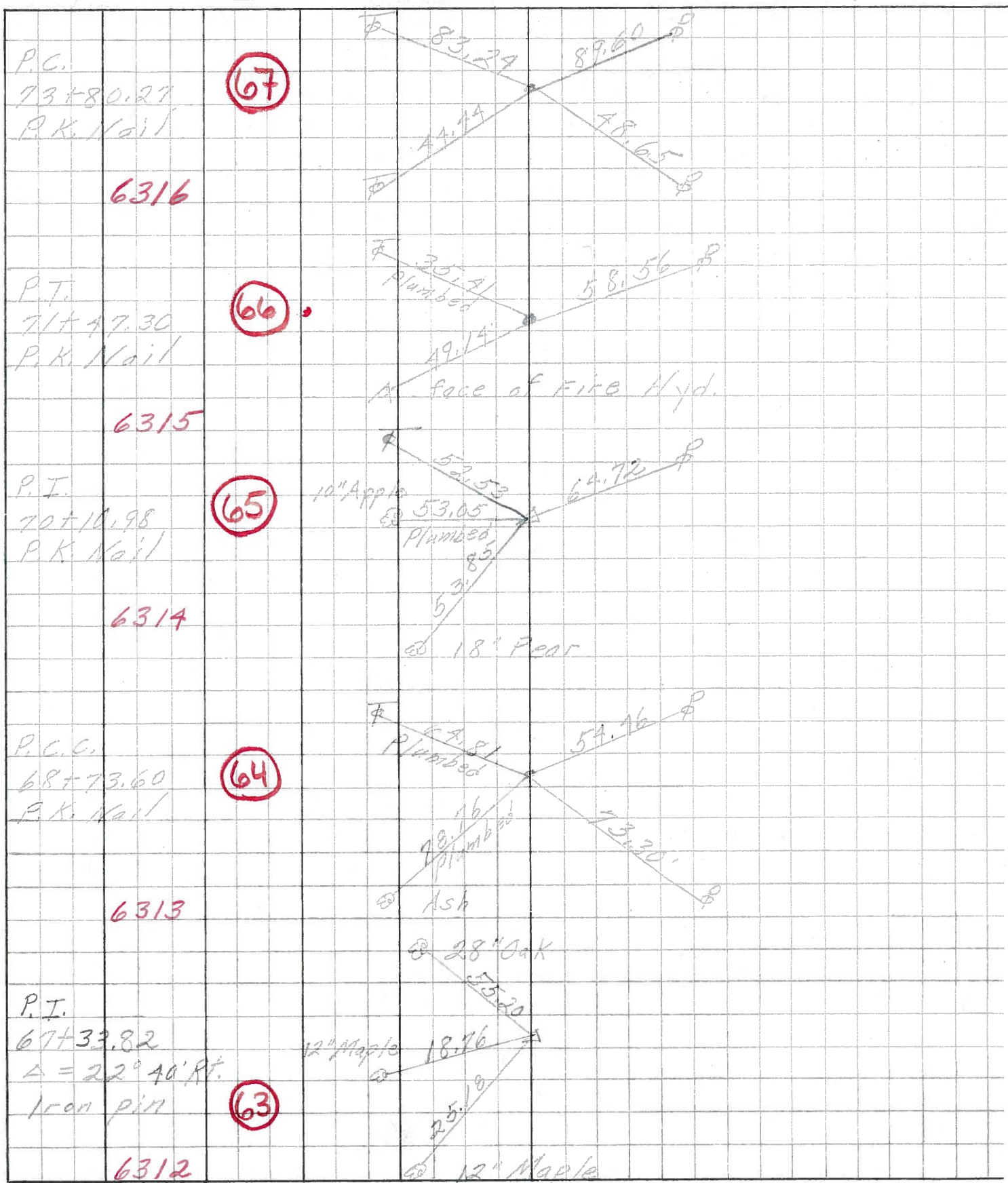
P.T.
71 + 47.30
P.K. Nail

66

P.I.
70 + 10.98
P.K. Nail

65

PERSONNEL	TITLE	PERSONNEL	TITLE	COUNTY	DATE
<u>Schneider</u>		<u>Potts</u>		<u>Ottawa</u>	<u>Aug, 1968</u>
<u>Mosser</u>				S. R. <u>163</u>	WEATHER _____
<u>Barbour</u>				SEC. <u>Oak Harbor East</u>	TEMP. _____
<u>Redding</u>					
DESCRIPTION	<u>Ties for Control Points</u>				JOB NO. _____



PERSONNEL	TITLE	PERSONNEL	TITLE	COUNTY	DATE
Krabikh				Ottawa	Feb 19, 1969
Kowaleski				S. R. #163	WEATHER
Geyman				SEC. F2 (pt)	TEMP.
Bruggeman					

DESCRIPTION Oak Harbor Mott Locations East JOB NO. _____

