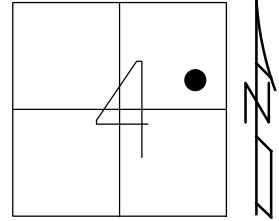


O.D.O.T. DISTRICT 2 SURVEY OFFICE (USE ONLY)

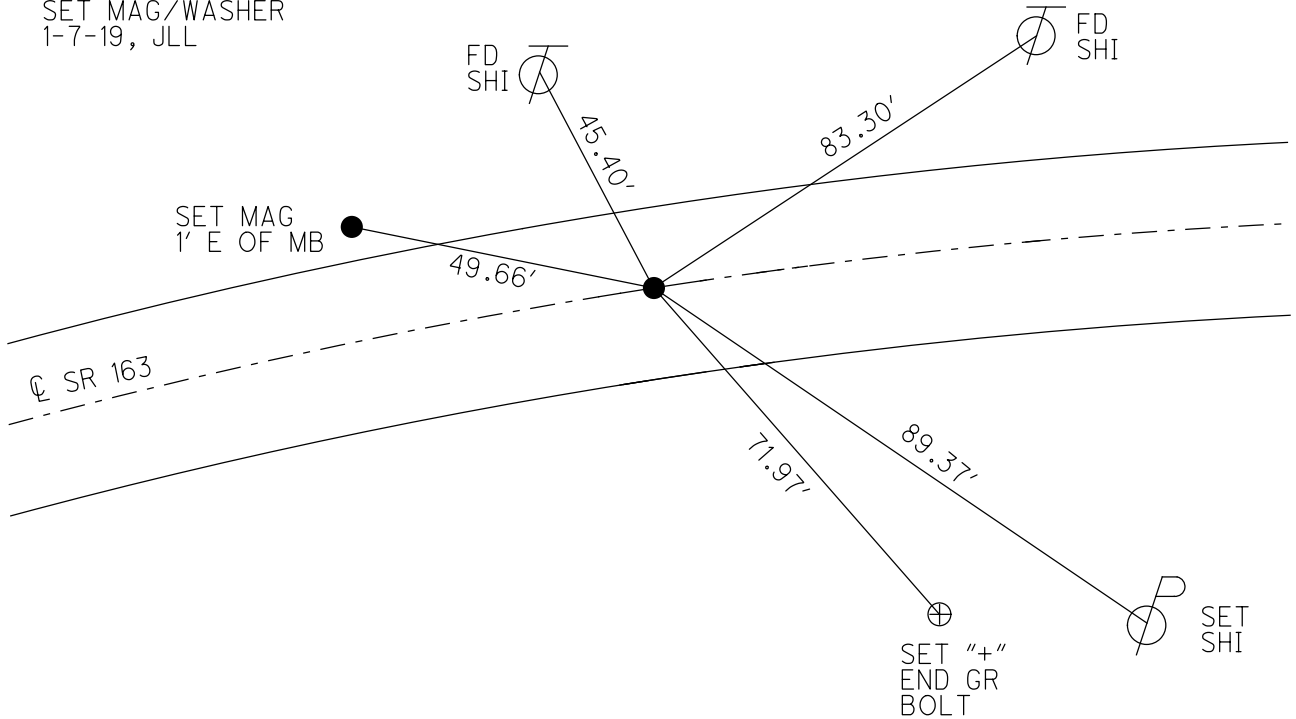
PERSONNEL \_\_\_\_\_ REFERENCE NO. 67 SHEET 36 OF 74  
 NOTES POORE DATE 7-10-17 ROUTE SR 163  
 H.C. LEU WEATHER RAINY COUNTY OTTAWA  
 R.C. CARSON TEMP. 70° TOWNSHIP SALEM  
 DWG BY JAMES PID 95757 SECTION 4  
 T 6 N R 15 E

TYPE MONUMENT P.K./WASHER  
 ON SURFACE - ~~BELOW~~ ON  
 OFFSET ☉ PAVEMENT ON LT : RT  
11.6' TO RT EDGE PAVEMENT  
 STATION: 799+56



HORIZ.DATUM: NAD83 2011 GEOID: NAVD88 2012A  
 GRID: NORTHING: 671777.395 EASTING: 1796427.545

RECORD: PC  
 STA 73+80.29  
 FD P.K./WASHER  
 8-21-00, SAH  
 SET P.K./WASHER  
 6-6-01, BVD  
 FD P.K./WASHER  
 REF67  
 5-5-16, DCH  
 7-10-17, JLL  
 SET MAG/WASHER  
 1-7-19, JLL



# O.D.O.T. DISTRICT 2 SURVEY OFFICE

PERSONNEL

NOTES KARGER  
 H.C. COODES  
 R.C. HUSS

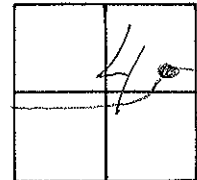
REFERENCE NO. 67

DATE 8-21-00  
 WEATHER Cloudy  
 TEMP. 82°

SHEET 26 OF 63

ROUTE 163  
 COUNTY Ottawa  
 TOWNSHIP Salmon  
 SECTION 4  
 T. 6 N. R. 15 E

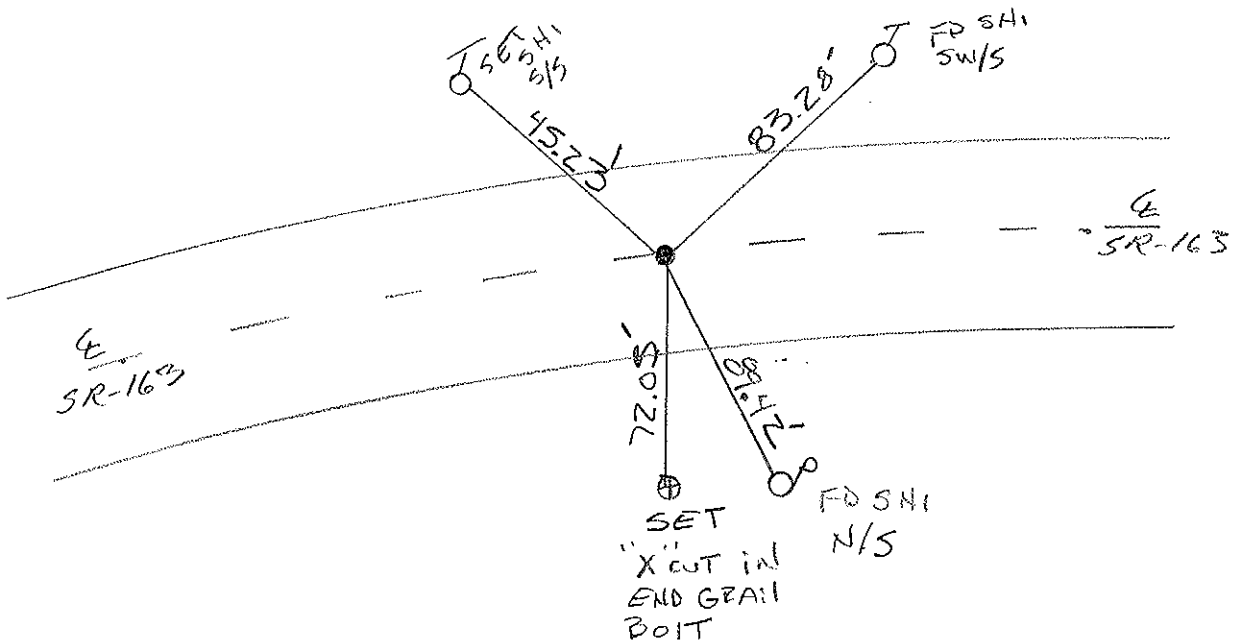
TYPE MONUMENT PK/W  
 ON SURFACE - ~~STONE~~ YES  
~~PAV'T.~~ YES  
 11.6 TO RT EDGE PAVEMENT  
 S.L.M. 799+56



Record: PC  
 Rec. Sta = 799+50  
 CONST. 73+80.29

SET PK WASHER  
6-6-01  
BVD

FD PK WASHER



30' East of  
Res 530's DR.

O.D.O.T. DISTRICT 2 SURVEY OFFICE

PERSONNEL

REFERENCE NO. 67

SHEET 18 OF     

NOTES Ripple

H.C. BARBOUR

R.C. GEYMAN

DATE 5-24-90

WEATHER Cloudy

TEMP. 72°

ROUTE 163

COUNTY OTTAWA

TOWNSHIP Salem

SECTION 4

T. 6 N R. 15 E

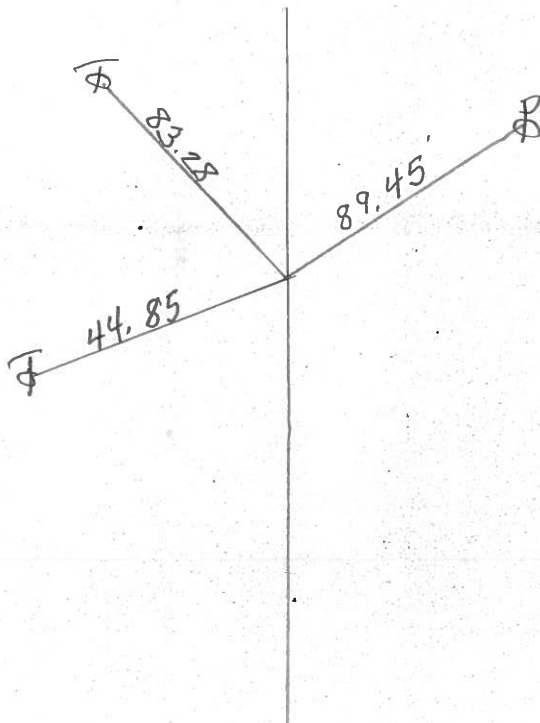
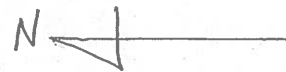
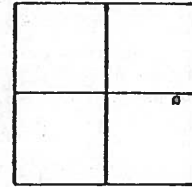
TYPE MONUMENT set PK + washer

ON SURFACE - BELOW     

LEFT - & PAV'T. - RIGHT     

TO      EDGE PAVEMENT

S.L.M. 799 + 50 = 73 + 80.29



PC.

PERSONNEL TITLE PERSONNEL TITLE

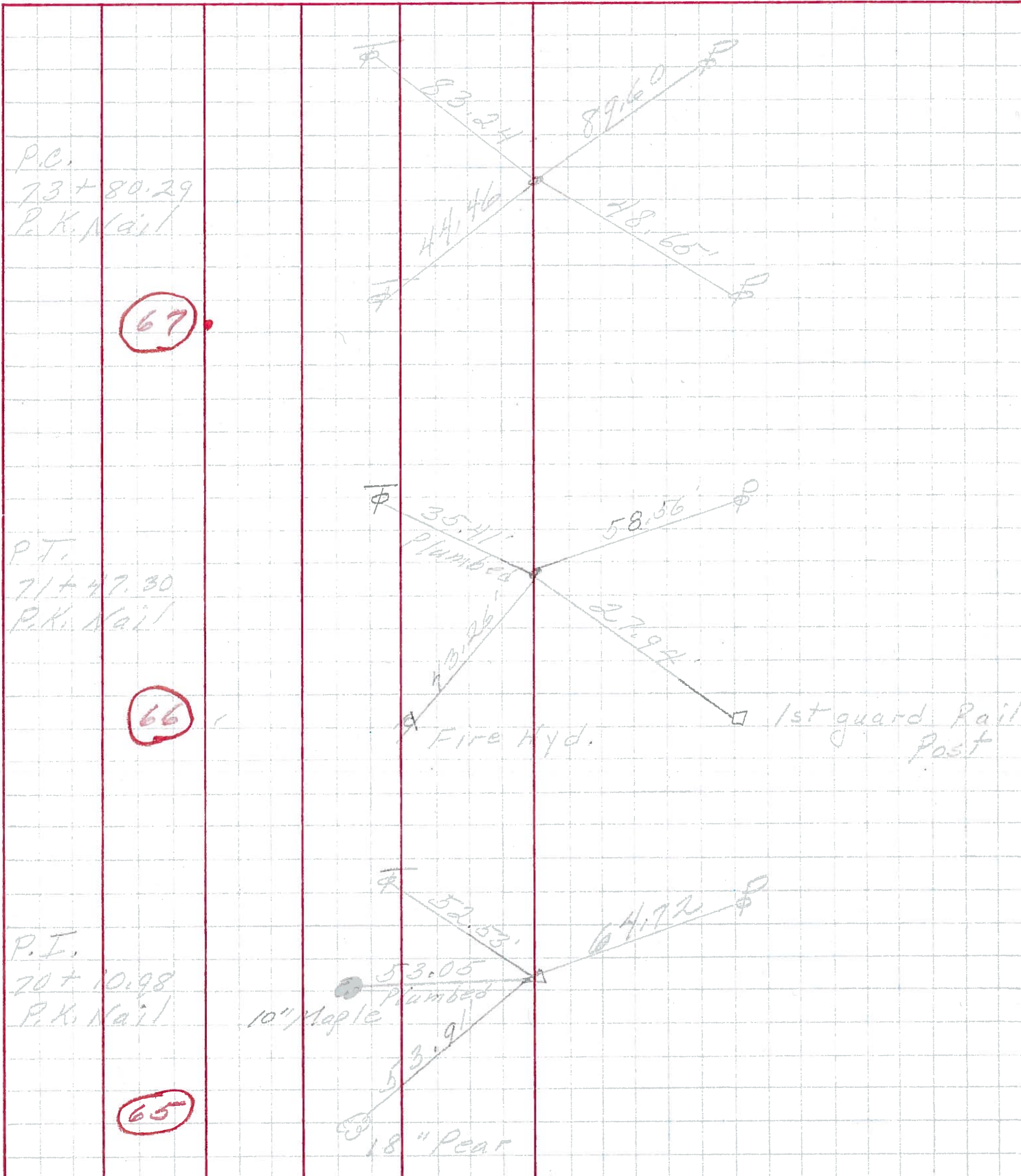
COUNTY Ottawa DATE March 1970

S. R. 163 WEATHER

SEC. Oak Harbor-East TEMP.

DESCRIPTION Sec-4 Salem Twp. JOB NO.

LEFT CENTER LINE RIGHT



P.C.  
73 + 80.29  
P.K. Nail

67

P.T.  
71 + 47.30  
P.K. Nail

66

P.I.  
20 + 10.98  
P.K. Nail

65

PERSONNEL	TITLE	PERSONNEL	TITLE	COUNTY	DATE
Schneider		Patts		Ottawa	Aug, 1968
Mosser				S. R. 163	WEATHER
Barbour				SEC. Dak Harbor East	TEMP.
Redding					
DESCRIPTION	Ties for Control Points				JOB NO.

	LEFT	CENTER LINE	RIGHT
P.C. 73+80.27 P.K. Nail	(67)	83.24 44.44	89.60 78.65
6316			
P.T. 71+47.30 P.K. Nail	(66)	35.71 19.14 Face of Fire Hyd.	58.56
6315			
P.I. 70+10.98 P.K. Nail	(65)	10" Apple 52.53 53.05 Plumbed 85 31 5	62.72 78" Pear
6314			
P.C.C. 68+73.60 P.K. Nail	(64)	64.81 Plumbed 16 78" Plumbed	54.46 73.70 60
6313			
P.T. 67+33.82 $\Delta = 22^\circ 40' Rt.$ Iron pin	(63)	28" Oak 55.20 12" Maple 18.76 25	12" Maple
6312			

PERSONNEL	TITLE	PERSONNEL	TITLE	COUNTY	DATE
Krabick				Ottawa	Feb 19, 1964
Kowaleski				S. R. #163	WEATHER
Geyman				SEC. E2 (pt)	TEMP.
Bruggenman					JOB NO.

DESCRIPTION Oak Harbor 77077 Locations East

